

SWD HURRICANE HARVEY SUPPLEMENTAL PROGRAM STATUS AND WAY AHEAD

Galveston District Stakeholder Forum

Jon Loxley
Program Manager
Southwestern Division, Programs Directorate
13 FEB 2020



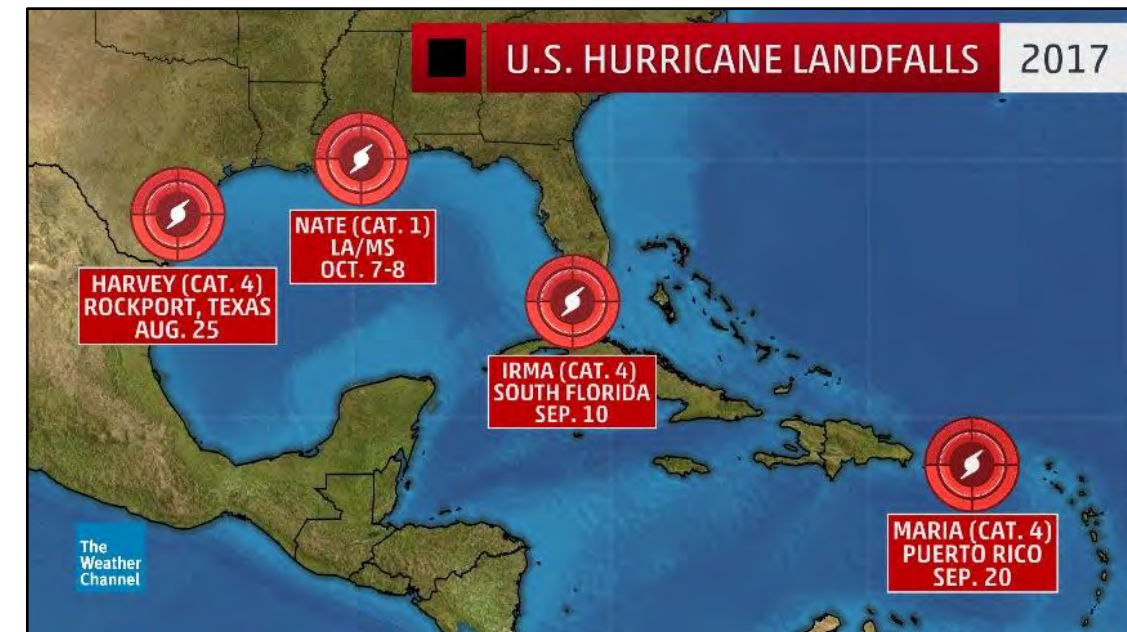
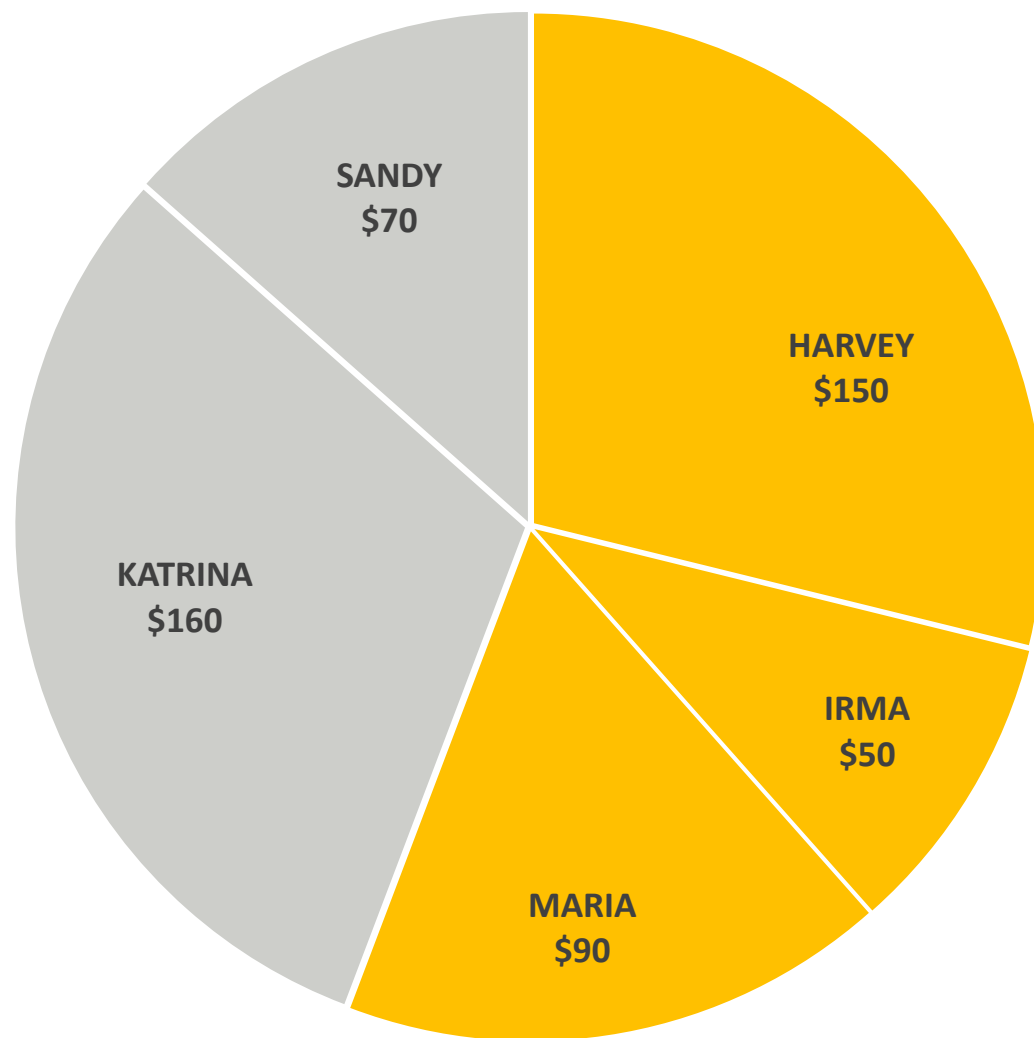
MISSION / PEOPLE / TEAMWORK



Galveston District Stakeholder Forum – Storm Impacts – The BIG 3 (Harvey, Irma and Maria)



US HISTORY FIVE COSTLIEST HURRICANES ESTIMATED DAMAGE COSTS (\$BILLIONS)



- The Three big hurricanes of 2017 – Harvey, Irma, Maria – now 3 of the 5 costliest hurricanes in US history
- 2017 the costliest hurricane season in U.S. history (\$290B)
- September 2017 was the single-most powerful month ever recorded in terms of hurricane intensity.

(Source: National Oceanic and Atmospheric Administration (NOAA); 2018)



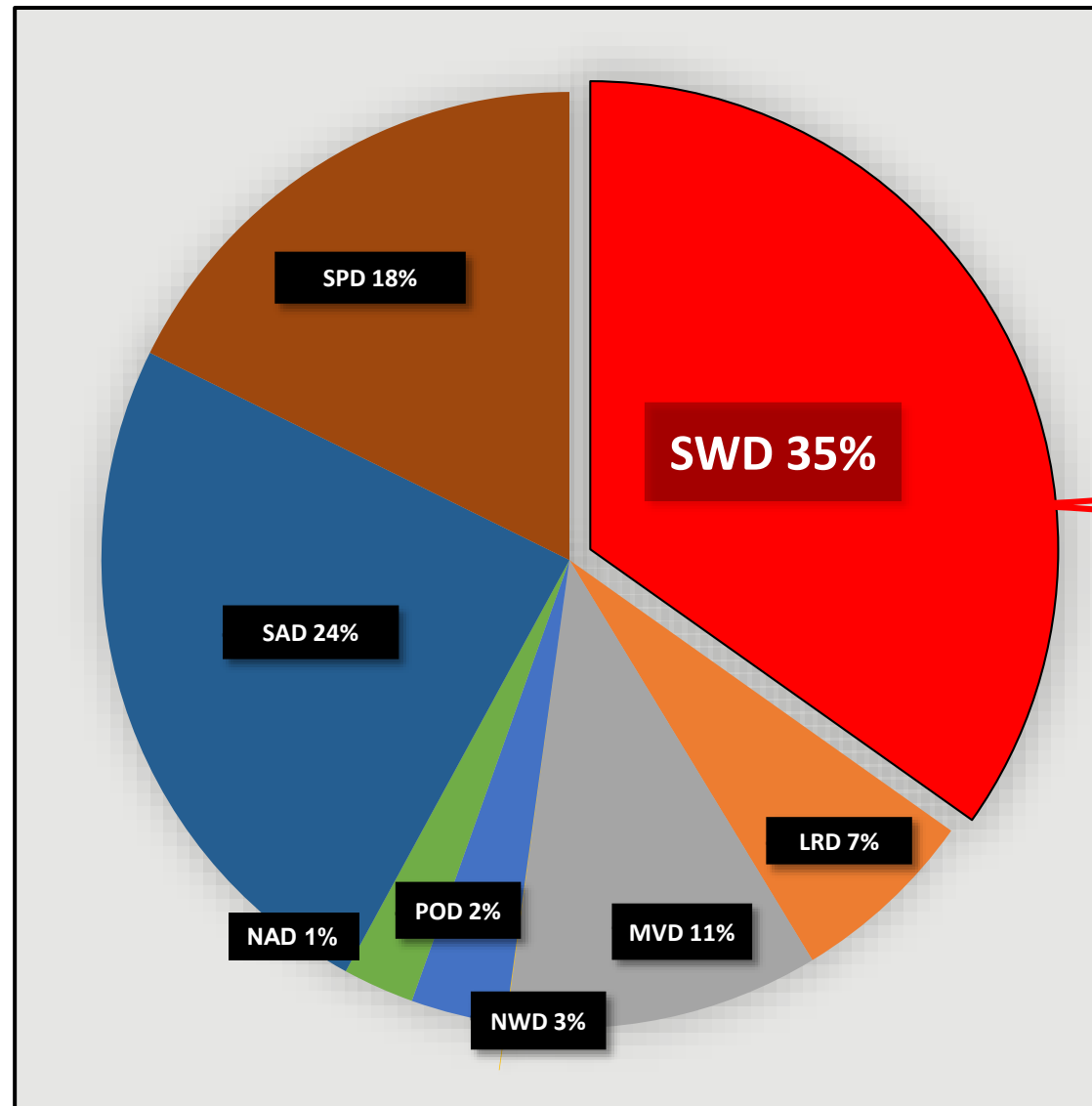
Galveston District Stakeholder Forum – Bipartisan Budget Act 2018 Overview



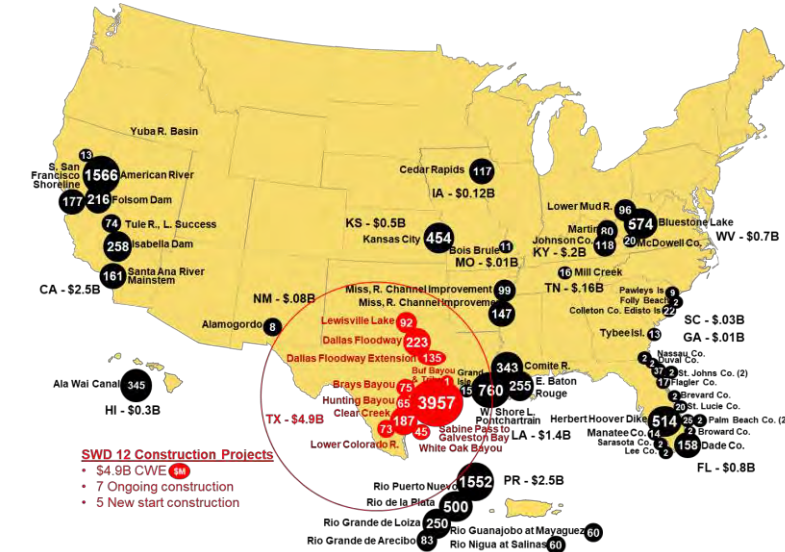
BBA 2018 Quick Facts

- PL 115-123 enacted 9 FEB 2018
- \$16.5 billion dollars
- 58 construction projects (\$15.1B)
- 38 study projects (\$135M)
- 170 Short-term projects (\$1.4B)
- SWD largest % of appropriation

USACE Long-term BBA2018 Funding Distribution



Construction Projects



Investigation Projects



SWD Short-term Repairs = 11% of National Program

\$205,444,000 - SWD Portfolios (O&M / FCCE) vs \$1,843,000,000 - National Program

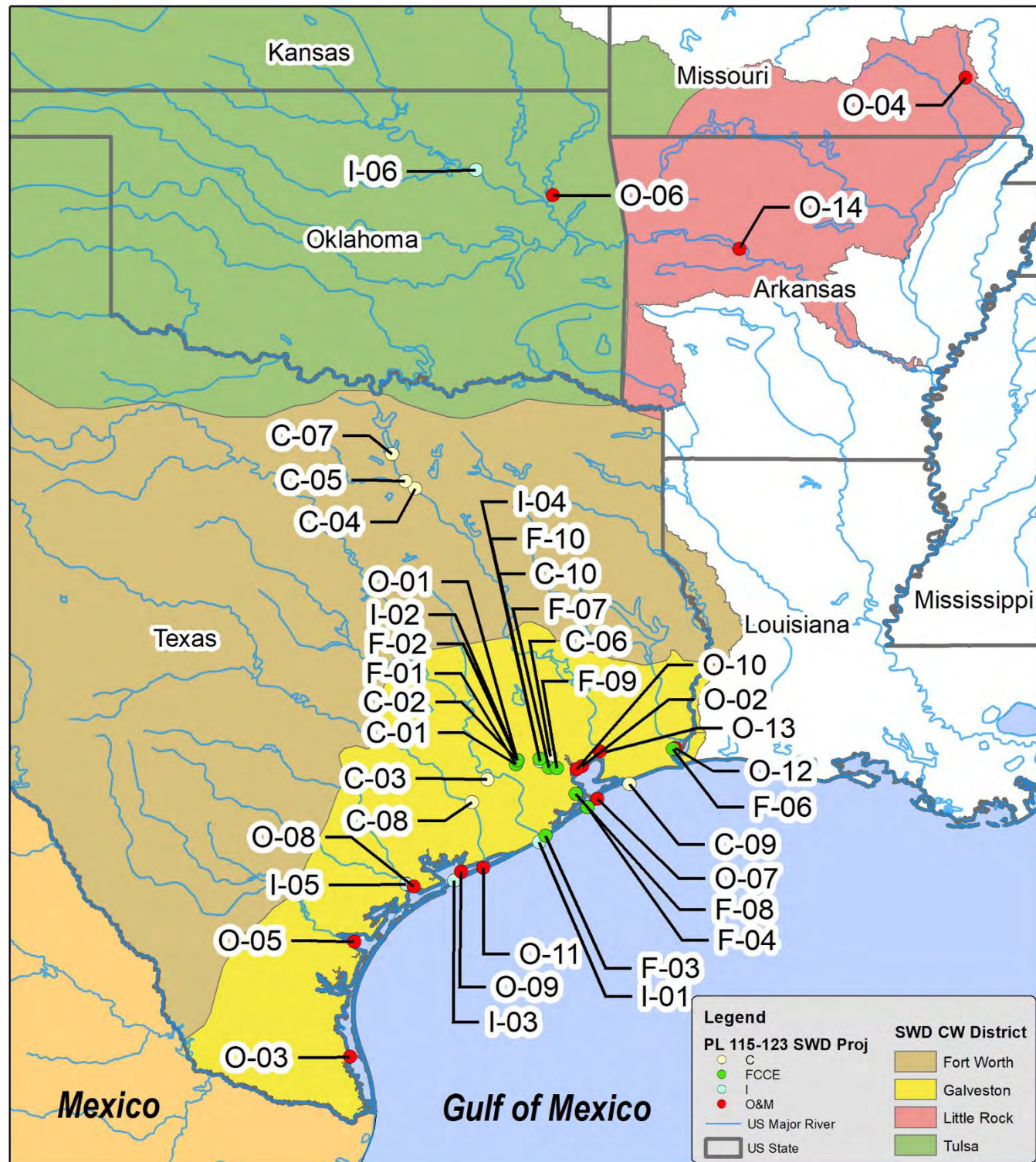


Galveston District Stakeholder Forum – SWD Bipartisan Budget Act of 2018 (Public Law 115-123) Construction, Investigation, O&M, and FCCE Accounts



SWD BBA 2018 Quick Facts

- 40 Projects
- SWD Total Program - \$5B
- Long-Term Projects - \$4.98B
- Short-Term Projects - \$205M



I

- Investigations (I) Portfolio
- 6 Projects
- \$20,604,000

C

- Construction (C) Portfolio
- 12 Projects
- \$4,854,172,000

O

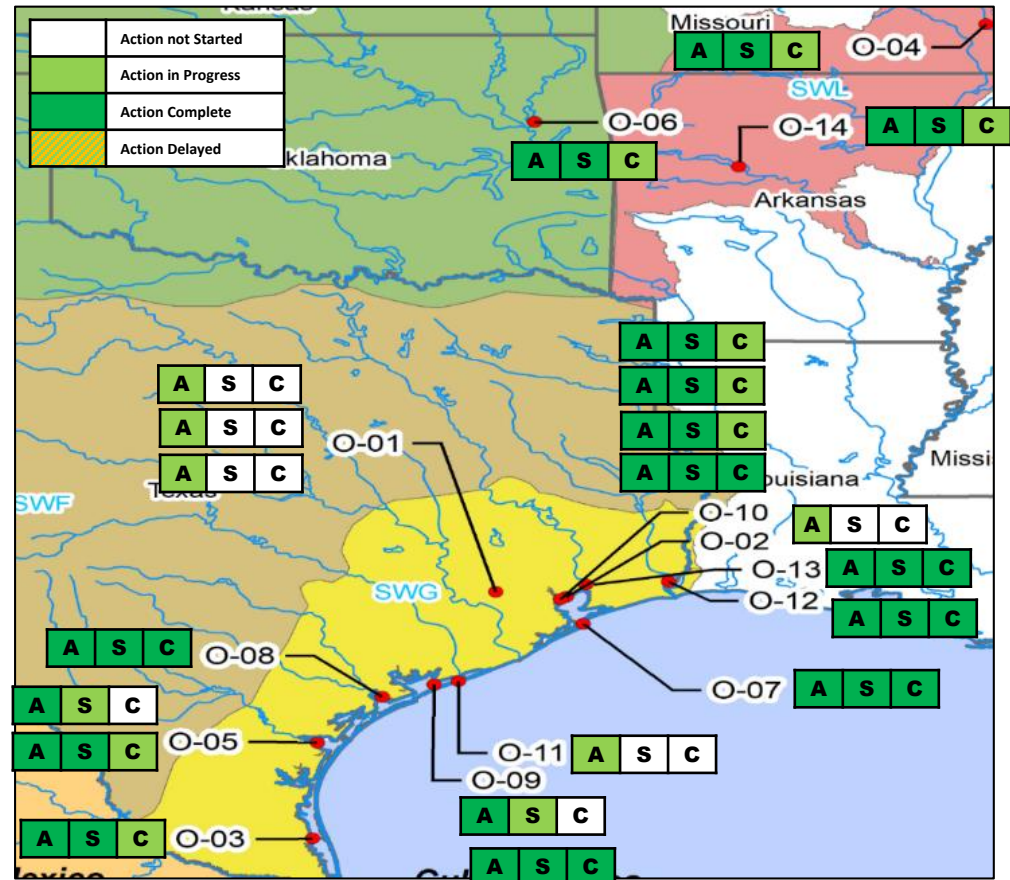
- Operations and Maintenance (O) Portfolio
- 14 Projects
- \$153,555,000

F

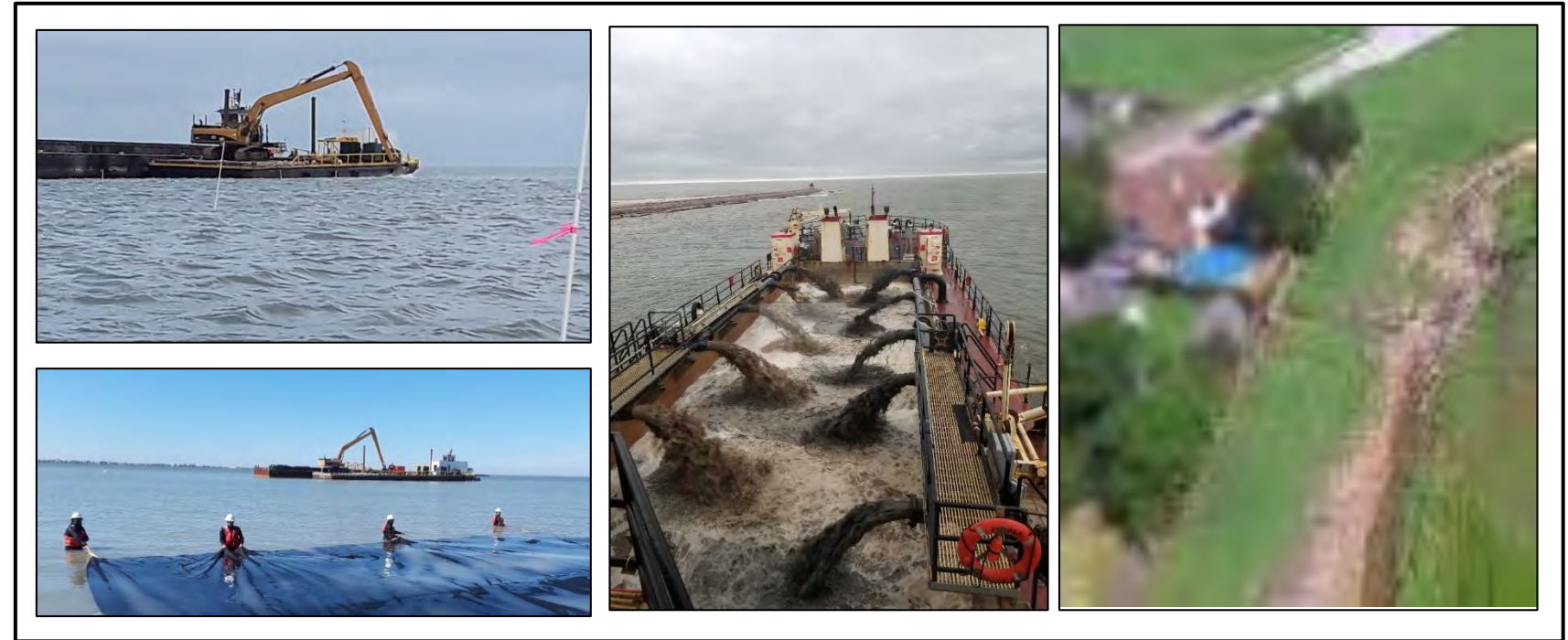
- Flood Control and Coastal Emergencies (F) Portfolio
- 8 Projects
- \$51,889,000



Galveston District Stakeholder Forum – SWD Harvey Supplemental O&M Portfolio



Portfolio: 14 Projects; Total \$153,555,000



Reflects Current Schedule

CALENDAR YEAR	2019												2020												2021											
	MONTH			MONTH			MONTH			MONTH			MONTH			MONTH			MONTH			MONTH			MONTH											
FISCAL YEAR/QT	A	M	J	J	A	S	O	N	D	J	F	M	A	M	J	J	A	S	O	N	D	J	F	M	A	M	J	J	A	S	O	N	D			
	FY19 Q3	FY19 Q4			FY20 Q1			FY20 Q2			FY20 Q3			FY20 Q4			FY21 Q1			FY21 Q2			FY21 Q3			FY21 Q4			FY22 Q1							
Buffalo Bayou and Tributaries, TX											A	A/S		S	S	A		C	S		C											C				
Cedar Bayou, TX												A/S										C														
Channel to Port Mansfield, TX					A				S		C																									
Clearwater Lake, MO											C																									
Corpus Christi Ship Channel, TX					A/A			A			S/C											F														
Fort Gibson Lake, OK												C																								
Gulf Intracoastal Waterway, TX					A				S														C													
Houston Ship Channel, TX					A/A/A			S/S	S														C													
Mouth of the Colorado, TX											A	S																								
McClellan-Kerr Arkansas River Nav Sys (MKARNS) AR																																				

Progress to-date

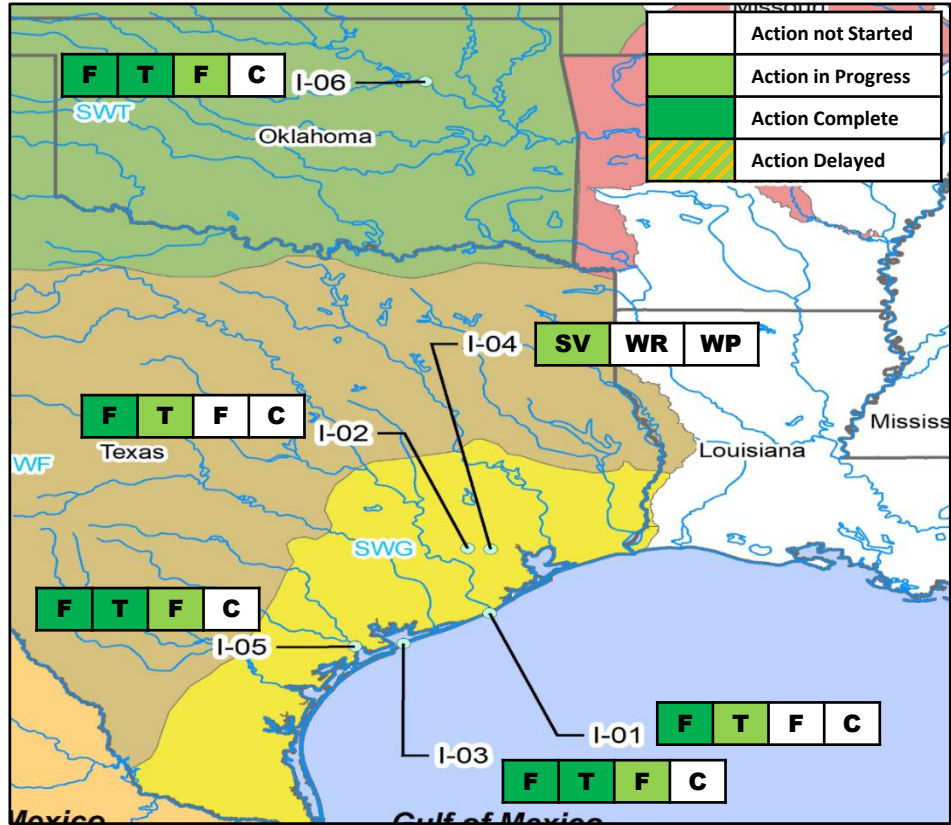
- CON Contracts Awarded (A): 17
- Construction Starts (S): 15
- Construction Complete (C): 7



Galveston District Stakeholder Forum – SWD Harvey Supplemental Investigations Portfolio



Portfolio: 6 Projects; Total \$20,604,000



Reflects Current Schedule



CALENDAR YEAR	2019												2020												2021											
	MONTH												MONTH												MONTH											
	A	M	J	J	A	S	O	N	D	J	F	M	A	M	J	J	A	S	O	N	D	J	F	M	A	M	J	J	A	S	O	N	D			
FISCAL YEAR/QT	FY19 Q3			FY19 Q4			FY20 Q1			FY20 Q2			FY20 Q3			FY20 Q4			FY21 Q1			FY21 Q2			FY21 Q3			FY21 Q4			FY22 Q1					
Brazos River, Fort Bend County, TX (SWG)									T		F		C																							
Buffalo Bayou and Tributaries Resiliency Study, TX (SWG)													T											F						C						
Coastal Texas Protection & Restoration Study, TX (SWG)					F																		F		C											
Houston Regional Watershed Assessment, TX (SWG)											S	V												W	R				F	P						
Guadalupe and San Antonio River Basins, TX (SWF)		T									F	C																								
Tulsa West Tulsa Levees, OK (SWT)					T						F			C																						

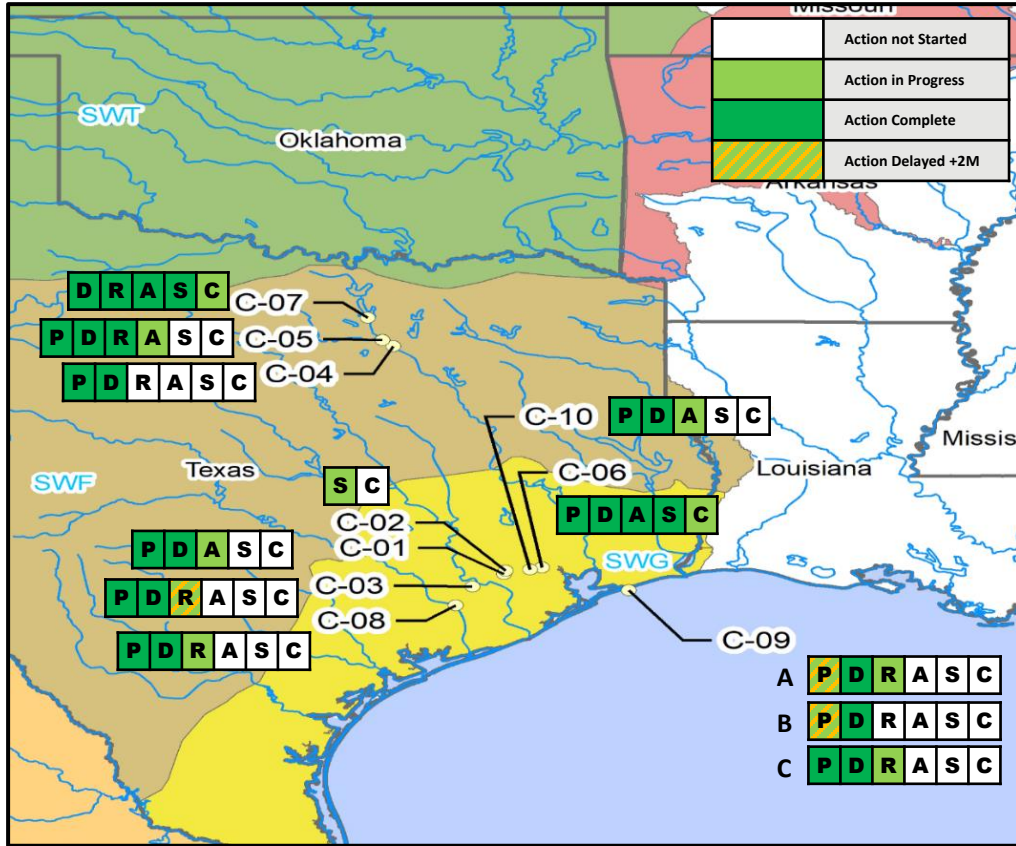
Reflects Current Schedule

Progress to-date

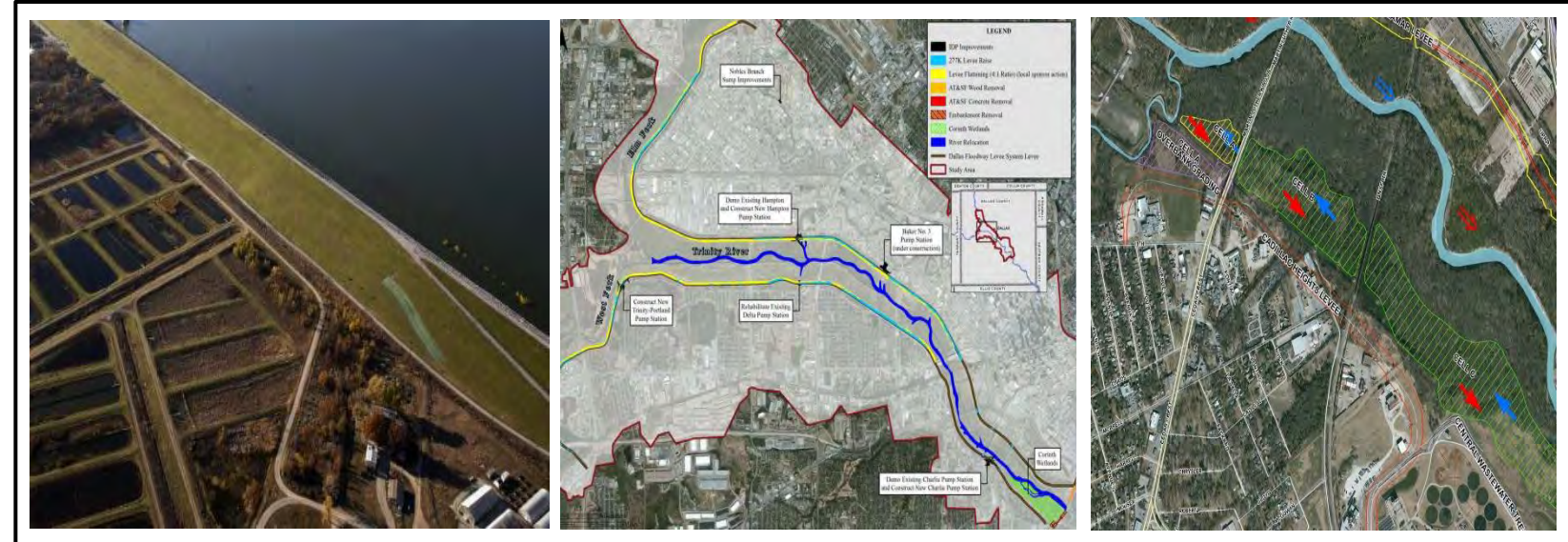
TWT Levee – Chief’s Report MAY-20
Houston H2Oshed – Shared Vision FEB-20
Buffalo Bayou – Tentatively selected Plan APR-20
Coastal TX – Chief’s Report MAY-21



Galveston District Stakeholder Forum – SWD Harvey Supplemental Construction Portfolio (SWF)



SWF CON Portfolio: 3 Projects; Total \$488,109,000



Reflects Current Schedule

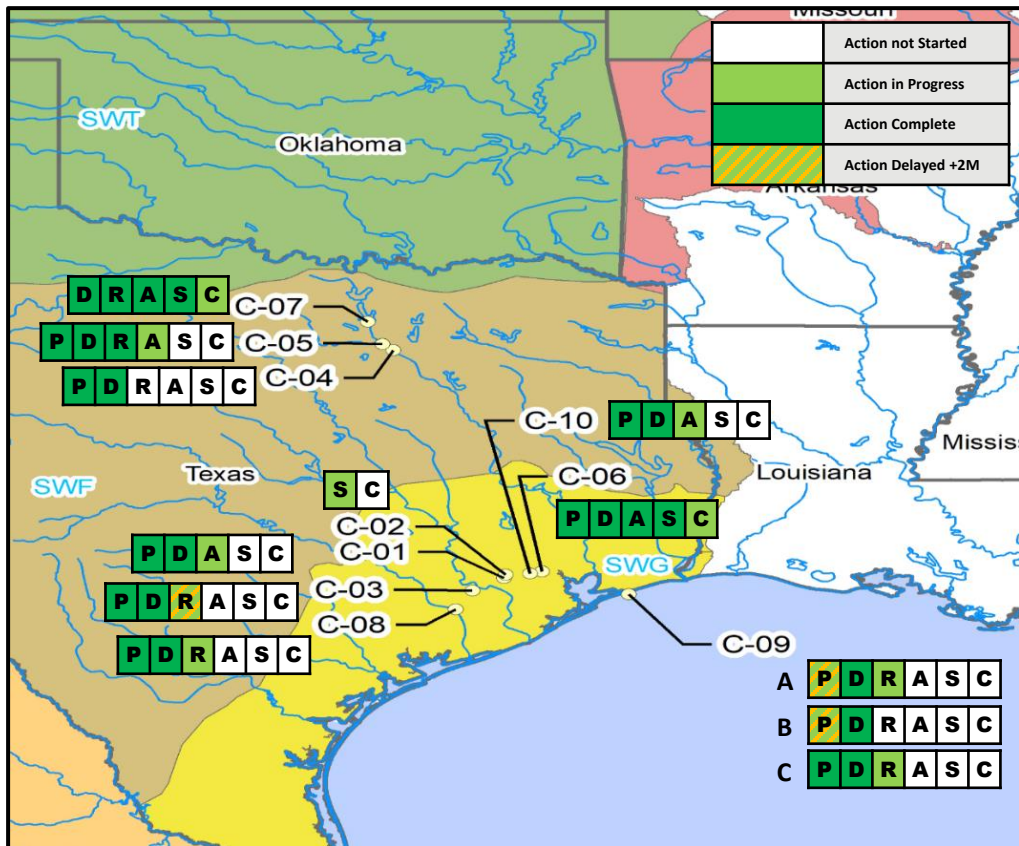
CALENDAR YEAR	2019				2020				2021				2022				2023				2024				2025				2026				2027			
	AM	J	J	AS	ND	J	FM	AM	J	J	AS	ND	J	FM	AM	J	J	J	AS	ND	J	FM	AM	J	J	J	AS	ND	J	FM	AM	J	J	J	AS	ND
FISCAL YEAR/QT	FY1 9 Q3	FY1 9 Q4	FY2 0 Q1	FY2 0 Q2	FY2 0 Q3	FY2 0 Q4	FY2 1 Q1	FY2 1 Q2	FY2 1 Q3	FY2 1 Q4	FY2 2 Q1	FY2 2 Q2	FY2 2 Q3	FY2 2 Q4	FY2 3 Q1	FY2 3 Q2	FY2 3 Q3	FY2 3 Q4	FY2 4 Q1	FY2 4 Q2	FY2 4 Q3	FY2 4 Q4	FY2 5 Q1	FY2 5 Q2	FY2 5 Q3	FY2 5 Q4	FY2 6 Q1	FY2 6 Q2	FY2 6 Q3	FY2 6 Q4	FY2 7 Q1	FY2 7 Q2	FY2 7 Q3	FY2 7 Q4	FY2 8 Q1	
Brays Bayou	D			A	S									C																						
Buffalo Bayou and Tribs				S					C			P																								
Clear Creek	P		R				AS							C														P								
DF Extension		P			D							R		AS														C		P						
Dallas Floodway	D	P	R				A	S			C																									
Hunting Bayou	AS														P																					
Lewisville Dam	A	S											C																					P		
LCR Phase 1 (Wharton)		D					R		A	S				C					P																	
SP2GB (Orange)				P									R		A	S																		C		P
SP2GB (Freeport)			P		D									R	AS													C								
SP2GB (Port Arthur)			P		R	A	S							C																			P			
White Oak Bayou	D				A	S							C																							

Progress to-date

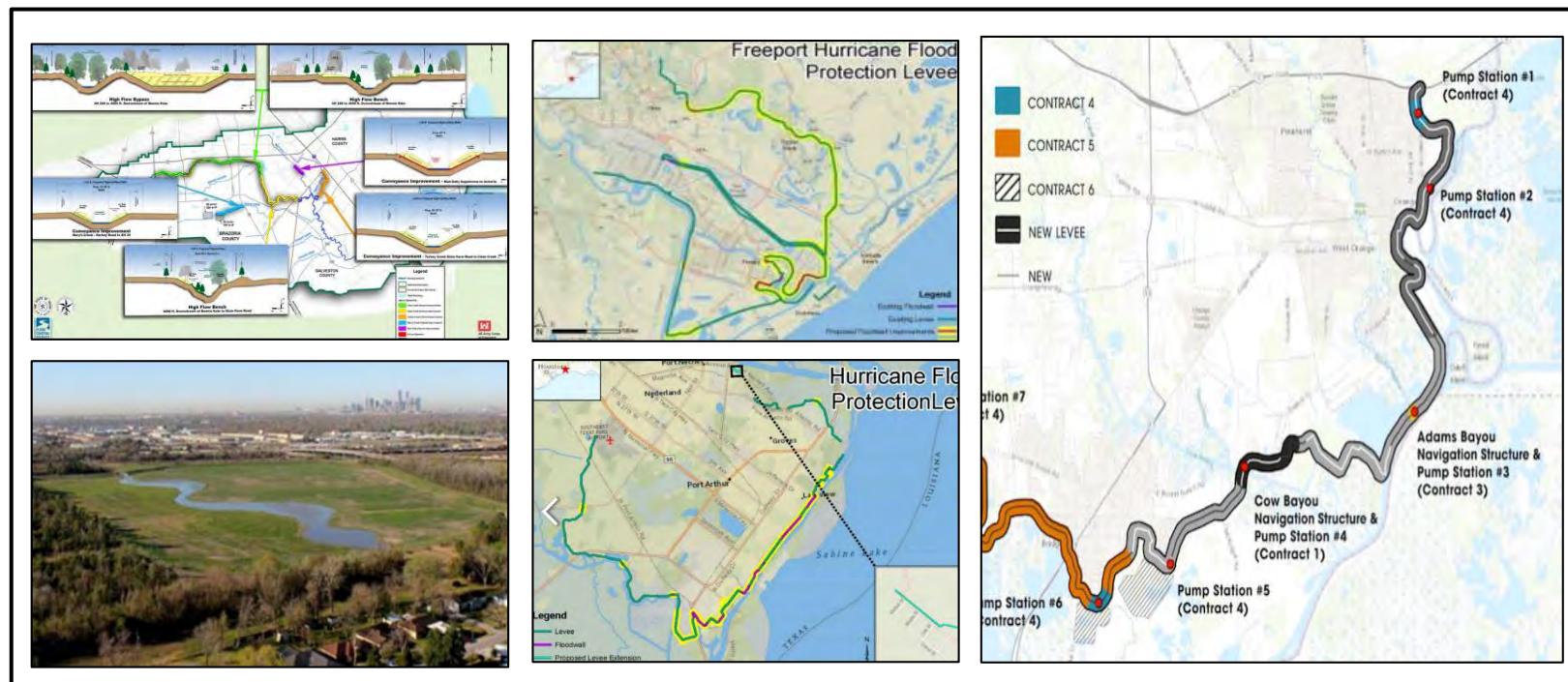
- Lewisville Dam embankment repair under construction
- Dallas Floodway AT&SF Bride DEMO – APR-20
- Dallas Floodway Extension ENG design under contract MAR-20



Galveston District Stakeholder Forum – SWD Harvey Supplemental Construction Portfolio (SWG)



SWG Portfolio: 9 Projects; Total \$4,366,073,000



Reflects Current Schedule

CALENDAR YEAR	2019				2020				2021				2022				2023				2024				2025				2026				2027				
	AM	J	J	AS	ND	J	F	M	M	J	J	AS	ND	J	F	M	M	J	J	AS	ND	J	F	M	M	J	J	AS	ND	J	F	M	M	J	J	AS	ND
FISCAL YEAR/QT	FY1 9 Q3	FY1 9 Q4	FY2 0 Q1	FY2 0 Q2	FY2 0 Q3	FY2 0 Q4	FY2 1 Q1	FY2 1 Q2	FY2 1 Q3	FY2 1 Q4	FY2 2 Q1	FY2 2 Q2	FY2 2 Q3	FY2 2 Q4	FY2 3 Q1	FY2 3 Q2	FY2 3 Q3	FY2 3 Q4	FY2 4 Q1	FY2 4 Q2	FY2 4 Q3	FY2 4 Q4	FY2 5 Q1	FY2 5 Q2	FY2 5 Q3	FY2 5 Q4	FY2 6 Q1	FY2 6 Q2	FY2 6 Q3	FY2 6 Q4	FY2 7 Q1	FY2 7 Q2	FY2 7 Q3	FY2 7 Q4	FY2 8 Q1		
Brays Bayou	D			A	S																																
Buffalo Bayou and Tribs				S						C		P																									
Clear Creek	P		R				AS																														
DF Extension		P			D						R		AS																								
Dallas Floodway	DP	R				A	S																														
Hunting Bayou	AS																																				
Lewisville Dam	A	S																																			
LCR Phase 1 (Wharton)		D																																			
SP2GB (Orange)				P																																	
SP2GB (Freeport)				P																																	
SP2GB (Port Arthur)				P																																	
White Oak Bayou	D																																				

- Progress to-date**
- Wharton – RTA Contract 1 JUN-20
 - 211f Projects – 12 CON awards
 - Clear Creek – CON Award JUN-20
 - Port Arthur – CON Award MAR-20
 - Freeport - ENG design A/E award
 - Orange - ENG design A/E award



Galveston District Stakeholder Forum – Harvey Supplemental SWG Impact

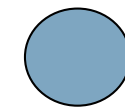
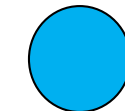
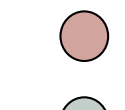



Galveston District
BBA18 Summary

\$4.5B worth of storm
damage repair and risk
reduction investment




Galveston District Summary

-  SWG Nine (9) Construction Projects
-  SWG Five (5) Feasibility Studies
-  SWG Eight (8) FCCE Projects
-  SWG Eleven (11) O&M Projects





CLOSING

U.S. Army Corps of Engineers
Southwestern Division



CONNECT WITH US!

 [facebook.com/swdusace](https://www.facebook.com/swdusace)

 twitter.com/usace_sw_d

<https://www.swd.usace.army.mil/>