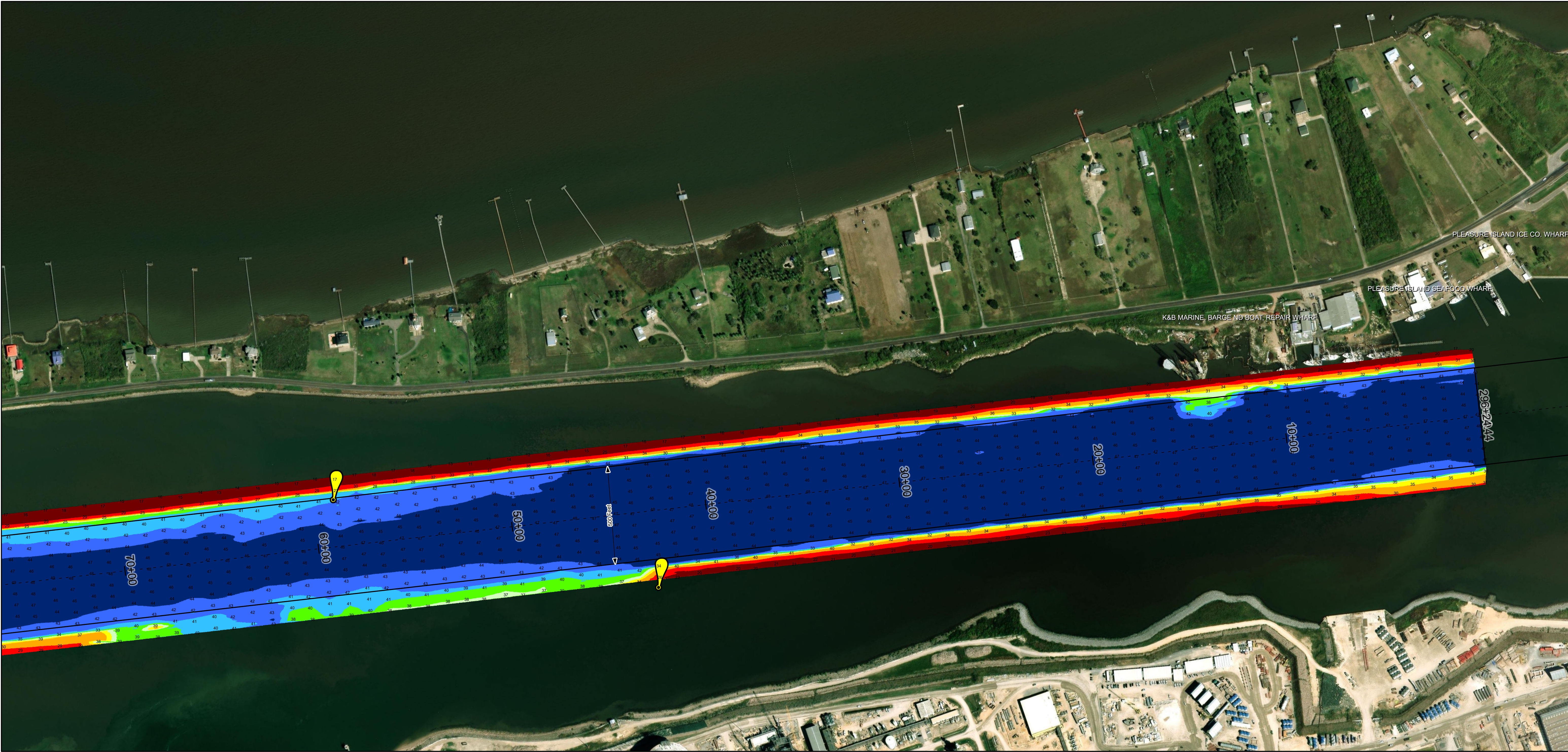
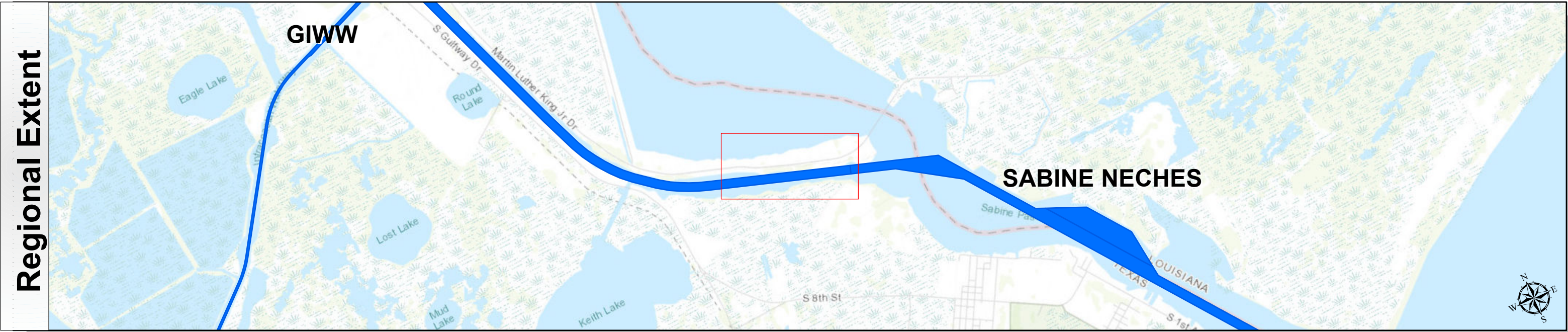


Sabine Neches Waterway: Port Arthur Canal



U.S. Army Corps of Engineers
Galveston District





Channel Features

- Channel Center Line
- Channel Toe
- Channel Dimensions

Aids to Navigation

- Green Side Aids
- Red Side Aids
- Lights

MLLW

| | | | | | | | | |
|--------|---------|---------|-------------|---------|------------|---------|-----------|-------|
| 0 - 25 | 25 - 30 | 30 - 34 | 34 - 36 | 36 - 38 | 38 - 40 | 40 - 42 | 42 - 44 | < 44 |
| Red | Orange | Yellow | Light Green | Green | Dark Green | Blue | Dark Blue | Black |

NOTES:
1. Horizontal coordinates are referenced to Texas state plane coordinate system, south central zone nad83 us survey feet.
2. Elevations are referenced to mean lower low tide (MLLW) datum.
3. This project was designed by the Galveston District of the U.S. Army Corps of Engineers. The initials and signatures and registration designations of individuals appear on these project documents within the scope of their employment as required by 47CFR 110.1-41.02.
4. The information depicted on this survey map represents the results of surveys made on the dates indicated and can only be considered as indicating the general conditions existing at that time. These conditions are subject to rapid change due to shoaling events. A prudent mariner should not rely exclusively on the information provided here. Required by 33 CFR 209.325
5. For the most up to date information please check our website at: <http://www.svg.usace.army.mil/Missions/Navigation/HydrographicSurveys/>

Service Layer Credits: World Topographic Map: Texas Parks & Wildlife, Esri, HERE, Garmin, INCREMENT P, USGS, METINASA, NOAA, EPA, USDA
World Imagery: Maxar
World Ocean Base: Esri, GEBCO, Garmin, NaturalVue

Additional Combined Survey Dates and Stationing:

Combined survey dates 20250419_PR_55P000_50P000; 20250419_PR_45P000_40P000;
20250419_PR_50P000_45P000; 20250603_PR_29P625_35P000; 20250611_PR_35P000_40P000;
20250612_PR_55P000_58P082

Coordinate System: NAD 1983 StatePlane Texas South Central FIPS 4204 Feet
Projection: Lambert Conformal Conic

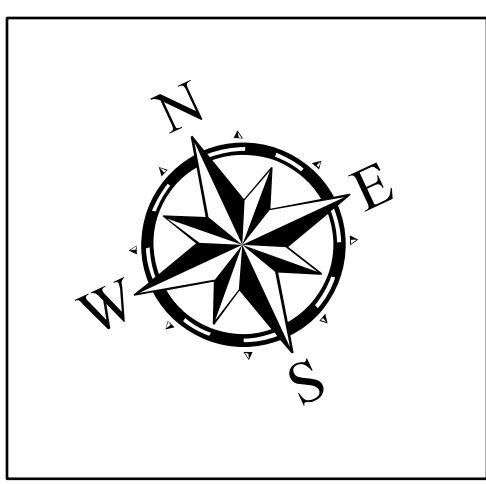
Dredging Reach Extent

0 0.3 0.6 1.2 Miles

Hydrographic Survey Extent

0 255 510 1,020 Feet

| | | |
|---|--------------------------|--------------------------------|
| Latest Survey Collection Date: 12 June 2025 | | Authorized Depth: -40ft. |
| Document Page: 1 of 4 | Website Index Number: 19 | Width Range: 500ft to 515ft |
| Scale: 1:3,000 | | Side Slope Ratio: (Rise : Run) |
| Mapped by: M3AOXPAC | | PDF Print Date: 6/19/2025 |
| Additional Imagery info: | | |



HYDROGRAPHIC SURVEY
U.S. ARMY ENGINEER DISTRICT
CORPS OF ENGINEERS
GALVESTON, TEXAS

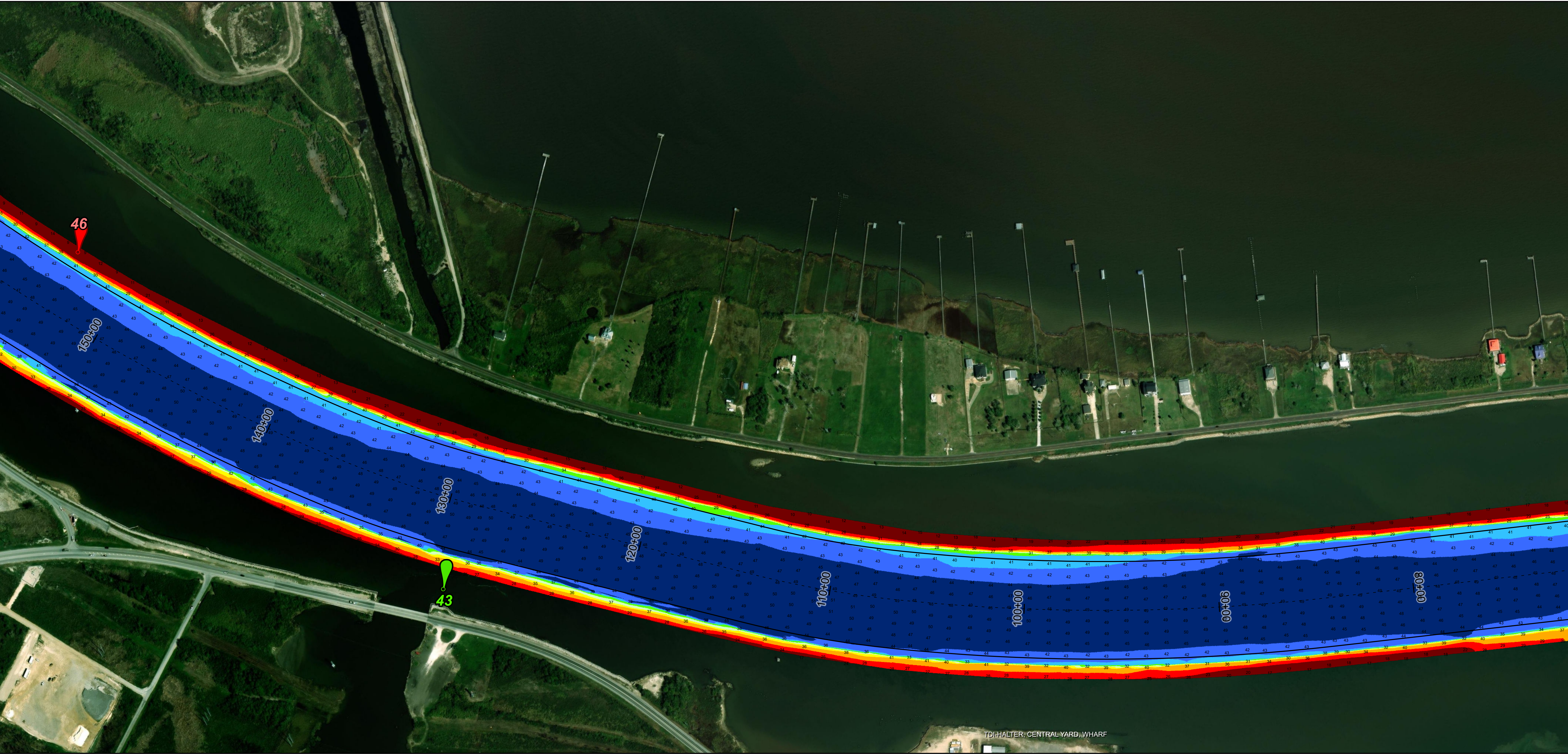
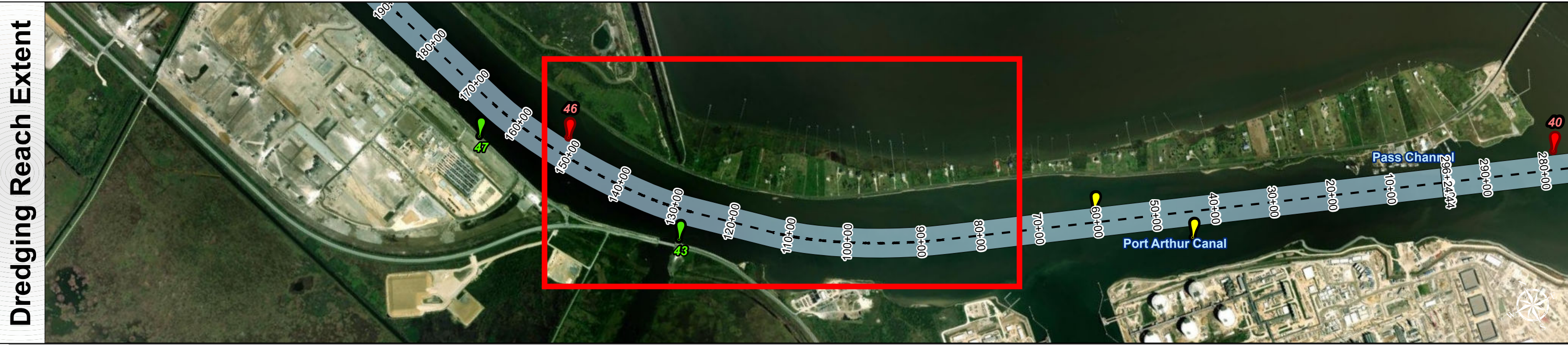
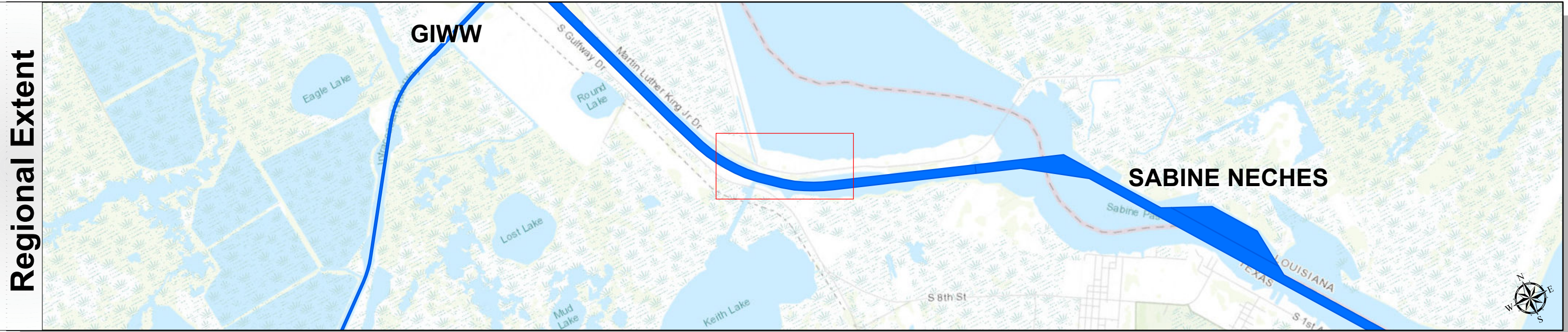
Station: 0+00 to 279+13
SABINE NECHES
Port Arthur Canal

Sabine Neches Waterway: Port Arthur Canal



U.S. Army Corps of Engineers
Galveston District





Channel Features

- Channel Center Line
- Channel Toe
- Channel Dimensions

Aids to Navigation

- Green Side Aids
- Red Side Aids
- Lights

MLLW

| | | | | | | | | |
|--------|---------|---------|-------------|---------|------------|---------|-----------|-------|
| 0 - 25 | 25 - 30 | 30 - 34 | 34 - 36 | 36 - 38 | 38 - 40 | 40 - 42 | 42 - 44 | < 44 |
| Red | Orange | Yellow | Light Green | Green | Dark Green | Blue | Dark Blue | Black |

NOTES:
1. Horizontal coordinates are referenced to Texas state plane coordinate system, south central zone nad83 us survey feet.
2. Elevations are referenced to mean lower low tide (MLLW) datum.
3. This project was designed by the Galveston District of the U.S. Army Corps of Engineers. The initials and signatures and registration designations of individuals appear on these project documents within the scope of their employment as required by 47CFR 110.1-41.12.
4. The information depicted on this survey map represents the results of surveys made on the dates indicated and can only be considered as indicating the general conditions existing at that time. These conditions are subject to rapid change due to shoaling events. A prudent mariner should not rely exclusively on the information provided here. Required by 33 CFR 209.325
5. For the most up to date information please check our website at: <http://www.svg.usace.army.mil/Missions/Navigation/HydrographicSurveys/>

Service Layer Credits: World Topographic Map: Texas Parks & Wildlife, Esri, HERE, Garmin, INCREMENT P, USGS, METINASA, NGA, EPA, USDA
World Imagery: Maxar
World Ocean Base: Esri, GEBCO, Garmin, NaturalVue

Additional Combined Survey Dates and Stationing:

Combined survey dates 20250419_PR_55P000_50P000; 20250419_PR_45P000_40P000;
20250419_PR_50P000_45P000; 20250603_PR_29P625_35P000; 20250611_PR_35P000_40P000;
20250612_PR_55P000_58P082

Coordinate System: NAD 1983 StatePlane Texas South Central FIPS 4204 Feet
Projection: Lambert Conformal Conic

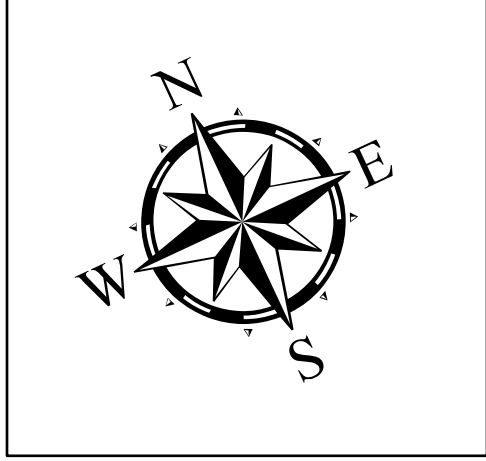
Dredging Reach Extent

0 0.3 0.6 1.2 Miles

Hydrographic Survey Extent

0 255 510 1,020 Feet

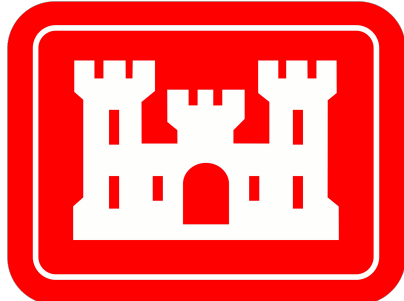
| | | |
|---|--------------------------|--------------------------------|
| Latest Survey Collection Date: 12 June 2025 | | Authorized Depth: -40ft. |
| Document Page: 2 of 4 | Website Index Number: 20 | Width Range: 500ft to 515ft |
| Scale: 1:3,000 | | Side Slope Ratio: (Rise : Run) |
| Mapped by: M3AOXPAC | | PDF Print Date: 6/19/2025 |
| Additional Imagery info: | | |



HYDROGRAPHIC SURVEY
U.S. ARMY ENGINEER DISTRICT
CORPS OF ENGINEERS
GALVESTON, TEXAS

Station: 0+00 to 279+13
SABINE NECHES
Port Arthur Canal

Sabine Neches Waterway: Port Arthur Canal



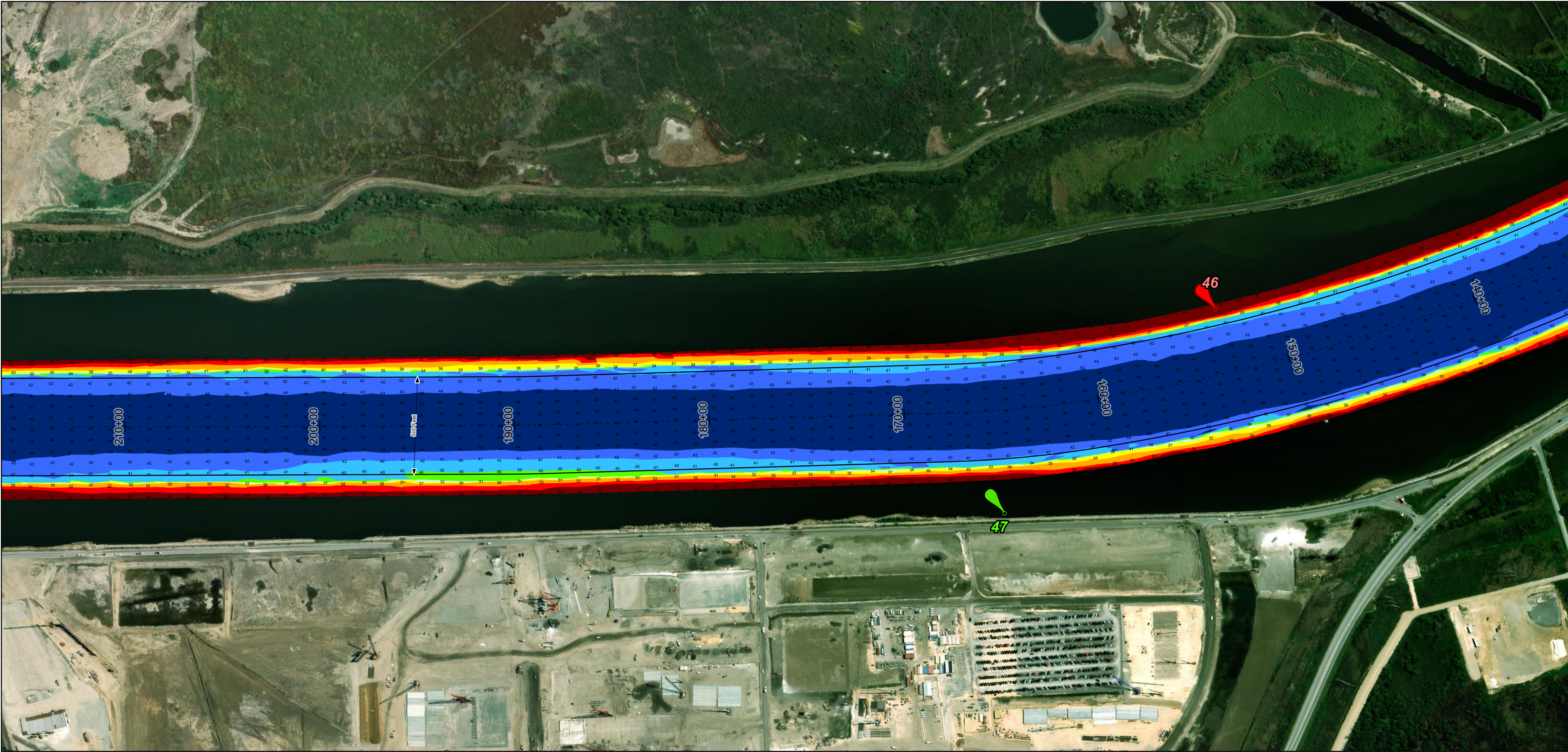
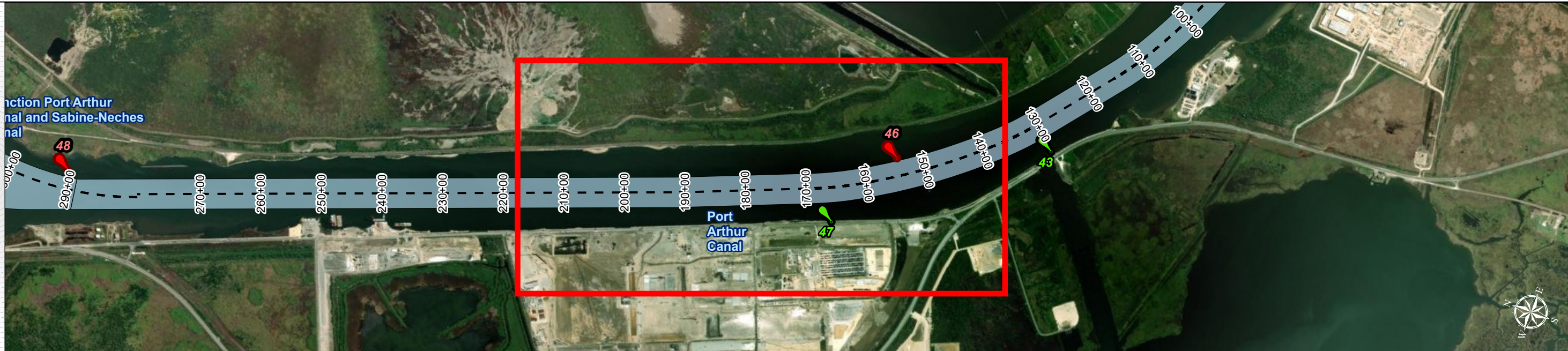
U.S. Army Corps of Engineers
Galveston District



Regional Extent



Dredging Reach Extent



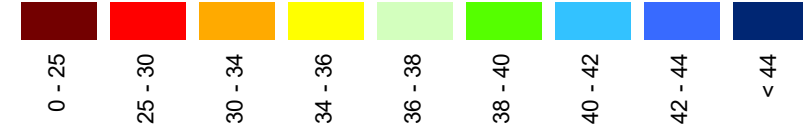
Channel Features

- Channel Center Line
- Channel Toe
- Channel Dimensions

Aids to Navigation

- Green Side Aids
- Red Side Aids
- Lights

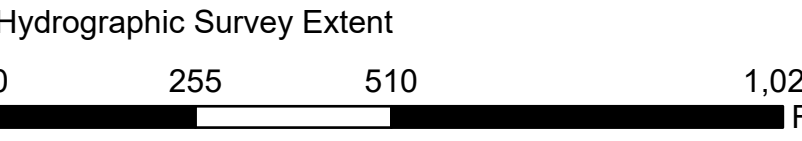
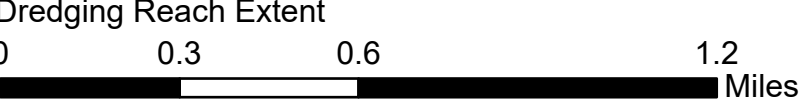
MLLW



NOTES:
1. Horizontal coordinates are referenced to Texas state plane coordinate system, south central zone nad83 us survey feet.
2. Elevations are referenced to mean lower low tide (MLLW) datum.
3. This project was designed by the Galveston District of the U.S. Army Corps of Engineers. The initials and signatures and registration designations of individuals appear on these project documents within the scope of their employment as required by 47CFR 110.1-41.02.
4. The information depicted on this survey map represents the results of surveys made on the dates indicated and can only be considered as indicating the general conditions existing at that time. These conditions are subject to rapid change due to shoaling events. A prudent mariner should not rely exclusively on the information provided here. Required by 33 or 206.325
5. For the most up to date information please check our website at: <http://www.swg.usace.army.mil/Missions/Navigation/HydrographicSurveys/>
Service Layer Credits: World Topographic Map: Texas Parks & Wildlife, Esri, HERE, Garmin, INCREMENT P, USGS, METINASA, NGA, EPA, USDA
World Imagery: Maxar
World Ocean Base: Esri, GEBCO, Garmin, NaturalVue

Additional Combined Survey Dates and Stationing:
Combined survey dates 20250419_PR_55P000_50P000; 20250419_PR_45P000_40P000;
20250419_PR_50P000_45P000; 20250603_PR_29P625_35P000; 20250611_PR_35P000_40P000;
20250612_PR_55P000_58P082

Coordinate System: NAD 1983 StatePlane Texas South Central FIPS 4204 Feet
Projection: Lambert Conformal Conic

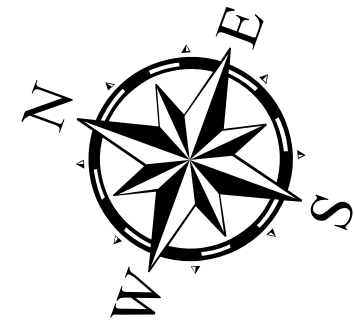


HYDROGRAPHIC SURVEY

U.S. ARMY ENGINEER DISTRICT
CORPS OF ENGINEERS
GALVESTON, TEXAS

Station: 0+00 to 279+13

SABINE NECHES
Port Arthur Canal



Latest Survey Collection Date: 12 June 2025

Document Page: 3 of 4

Website Index Number: 21

Scale: 1:3,000

Mapped by: M3AOXPAC

Additional Imagery info:

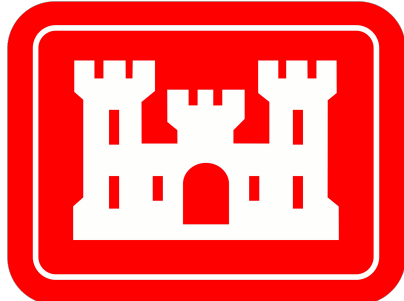
Authorized Depth: -40ft.

Width Range: 500ft to 515ft

Side Slope Ratio: (Rise : Run)

PDF Print Date: 6/19/2025

Sabine Neches Waterway: Port Arthur Canal



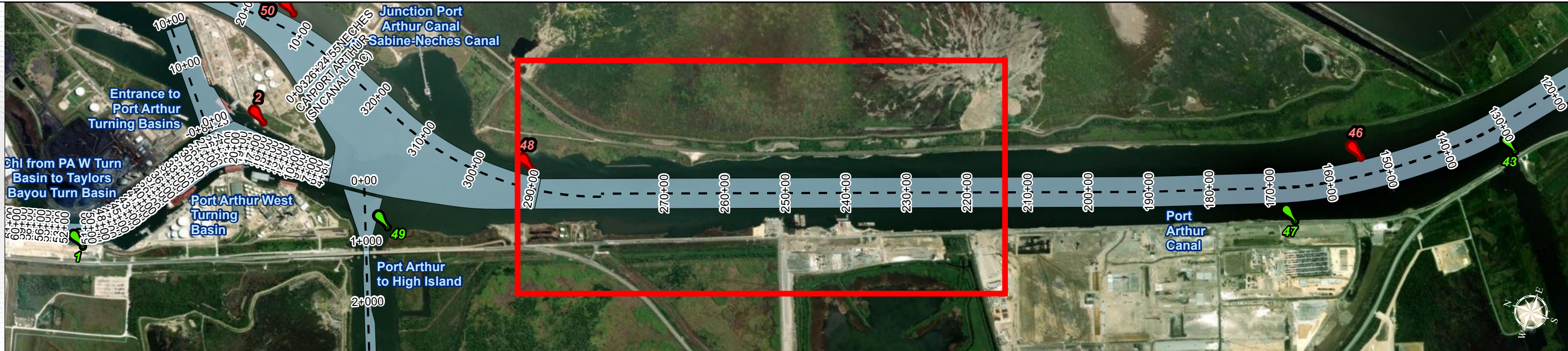
U.S. Army Corps of Engineers
Galveston District



Regional Extent



Dredging Reach Extent



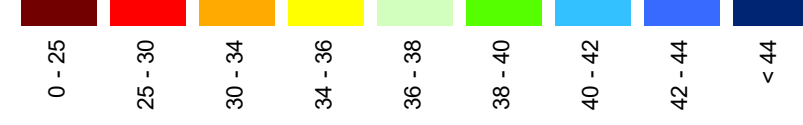
Channel Features

- Channel Center Line
- Channel Toe
- Channel Dimensions

Aids to Navigation

- Green Side Aids
- Red Side Aids
- Lights

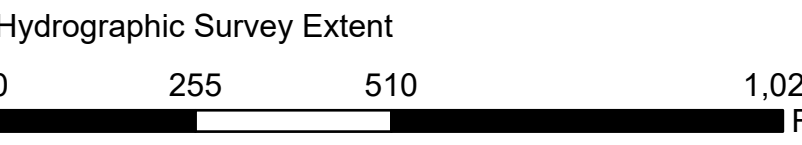
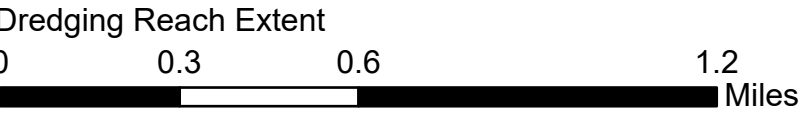
MLLW



NOTES:
1. Horizontal coordinates are referenced to Texas state plane coordinate system, south central zone nad83 us survey feet.
2. Elevations are referenced to mean lower low tide (MLLW) datum.
3. This project was designed by the Galveston District of the U.S. Army Corps of Engineers. The initials and signatures and registration designations of individuals appear on these project documents within the scope of their employment as required by er11101-4-102.
4. The information depicted on this survey map represents the results of surveys made on the dates indicated and can only be considered as indicating the general conditions existing at that time. These conditions are subject to rapid change due to shoaling events. A prudent mariner should not rely exclusively on the information provided here. Required by 33 CFR 209.325
5. For the most up to date information please check our website at: <http://www.swg.usace.army.mil/Missions/Navigation/HydrographicSurveys/>
Service Layer Credits: World Topographic Map: Texas Parks & Wildlife, Esri, HERE, Garmin, INCREMENT P, USGS, METINASA, NGA, EPA, USDA
World Imagery: Maxar
World Ocean Base: Esri, GEBCO, Garmin, NaturalVue

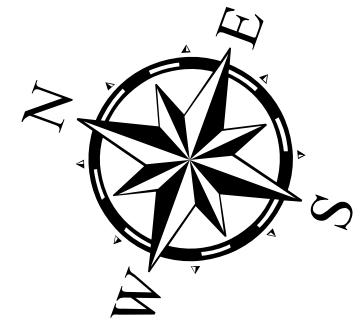
Additional Combined Survey Dates and Stationing:
Combined survey dates 20250419_PR_55P000_50P000; 20250419_PR_45P000_40P000;
20250419_PR_50P000_45P000; 20250603_PR_29P625_35P000; 20250611_PR_35P000_40P000;
20250612_PR_55P000_58P082

Coordinate System: NAD 1983 StatePlane Texas South Central FIPS 4204 Feet
Projection: Lambert Conformal Conic



HYDROGRAPHIC SURVEY

U.S. ARMY ENGINEER DISTRICT
CORPS OF ENGINEERS
GALVESTON, TEXAS
Station: 0+00 to 279+13
SABINE NECHES
Port Arthur Canal



Latest Survey Collection Date: 12 June 2025
Document Page: 4 of 4
Scale: 1:3,000
Mapped by: M3AOXPAC
Additional Imagery info:

Authorized Depth: -40ft.

Width Range: 500ft to 515ft

Side Slope Ratio: (Rise : Run)

PDF Print Date: 6/19/2025