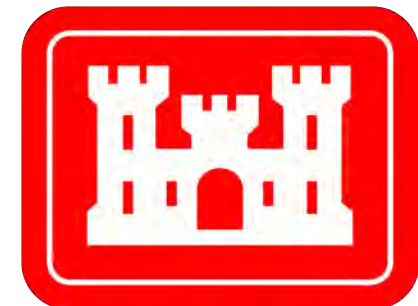


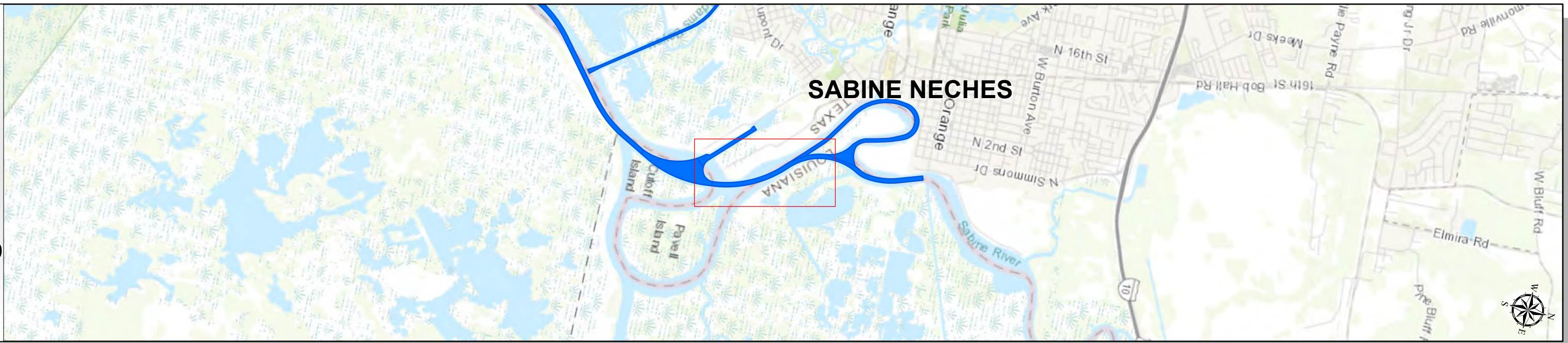
Sabine Neches Waterway: Orange Truning Basin to Highway 90 Bridge



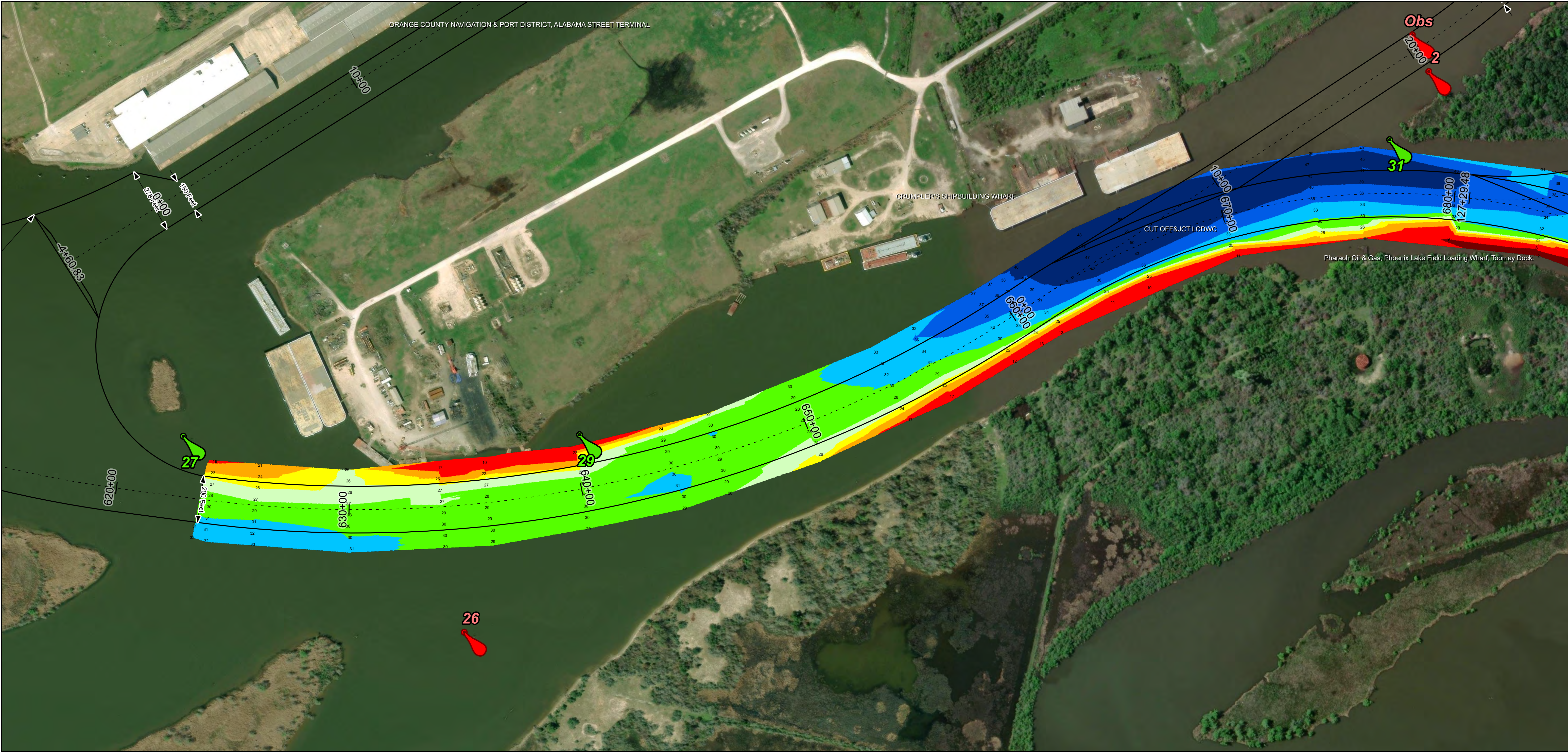
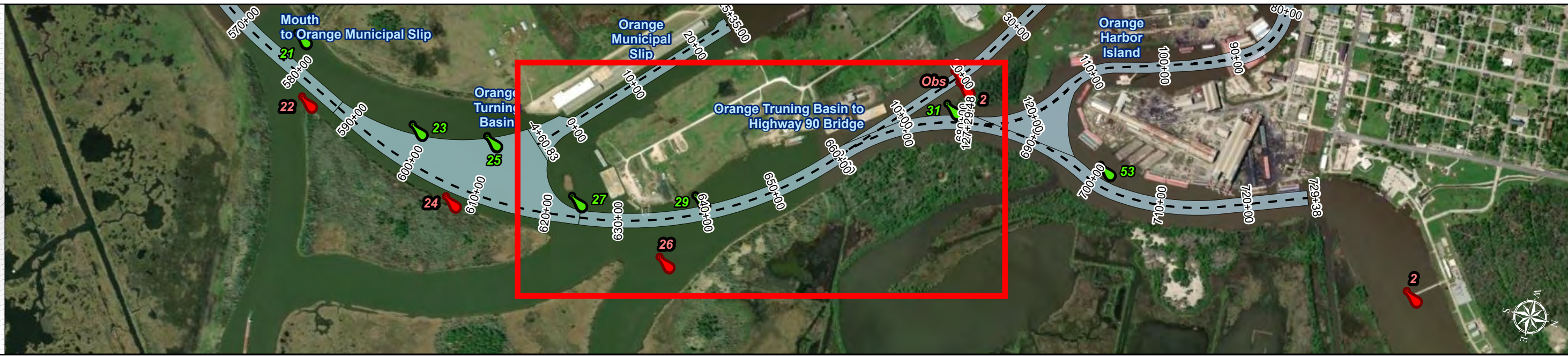
U.S. Army Corps of Engineers
Galveston District



Regional Extent



Dredging Reach Extent



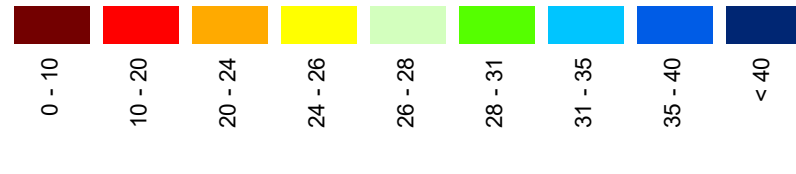
Channel Features

- Channel Center Line
- Channel Toe
- Channel Dimensions

Aids to Navigation

- Green Side Aids
- Red Side Aids
- Lights

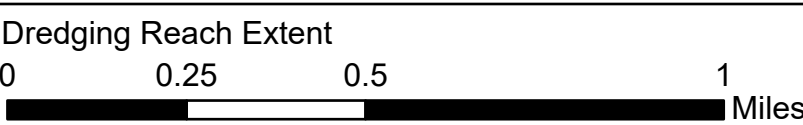
MLLW



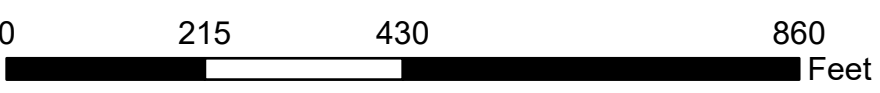
NOTES:
1. Horizontal coordinates are referenced to Texas State Plane Coordinate System, South Central Zone NAD83 US Survey Feet.
2. Elevations are referenced to Mean Lower Low Water (MLLW) datum.
3. This project was designed by the Galveston District of the U.S. Army Corps of Engineers. The initials and signatures and registration designations of individuals appear on these project documents within the scope of their employment as required by 47CFR 110.1-41.02.
4. The information depicted on this survey map represents the results of surveys made on the dates indicated and can only be considered as indicating the general conditions existing at that time. These conditions are subject to rapid change due to shoaling events. A prudent mariner should not rely exclusively on the information provided here. Required by 33 CFR 209.325.
5. For the most up to date information please check our website at: <http://www.svg.usace.army.mil/Missions/Navigation/HydrographicSurveys/>
Service Layer Credits: World Topographic Map: Texas Parks & Wildlife, Esri, HERE, Garmin, INCREMENT P, USGS, METINASA, NGA, EPA, USDA
World Imagery: Maxar
World Ocean Base: Esri, GEBCO, Garmin, NaturalVue

Additional Combined Survey Dates and Stationing:
COMB_SURV_INFO_HERE

Coordinate System: NAD 1983 StatePlane Texas South Central FIPS 4204 Feet
Projection: Lambert Conformal Conic



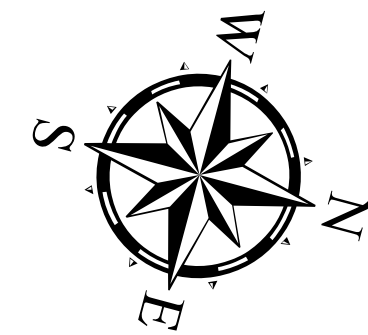
Hydrographic Survey Extent



HYDROGRAPHIC SURVEY

U.S. ARMY ENGINEER DISTRICT
CORPS OF ENGINEERS
GALVESTON, TEXAS

Station: 623+63.09 to 729+38.15
SABINE NECHES
Orange Truning Basin to Highway 90 Bridge



Latest Survey Collection Date: 04 April 2025

Document Page: 1 of 2

Website Index Number: 40

Scale: 1:2,500

Mapped by: M3AOXPAC

Additional Imagery info:

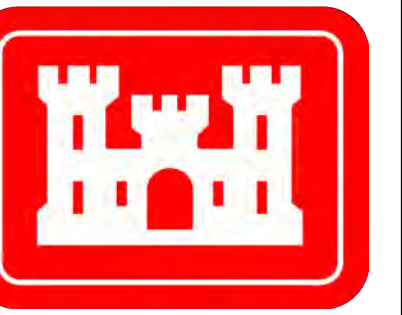
Authorized Depth: -31ft.

Width Range: 200ft to 200ft

Side Slope Ratio: (Rise : Run)

PDF Print Date: 5/8/2025

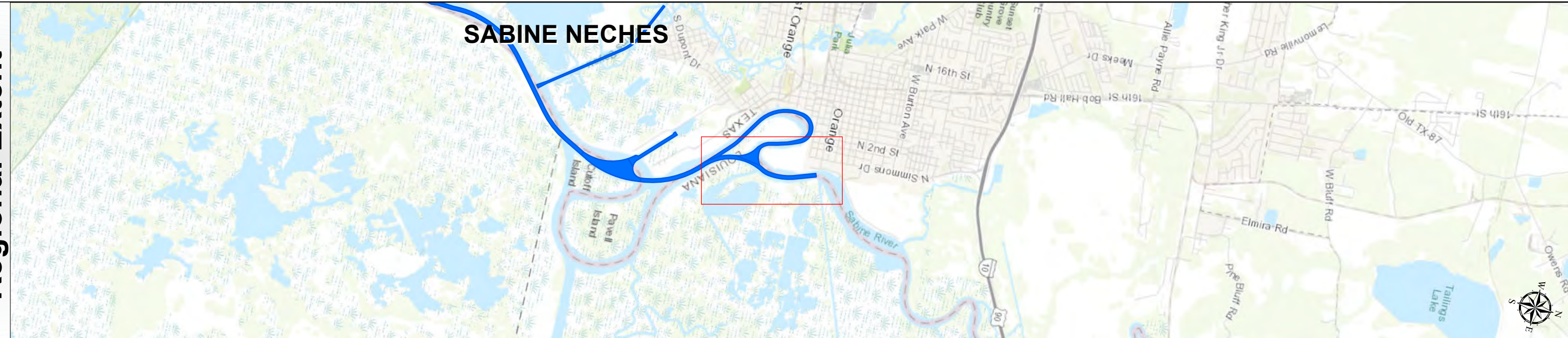
Sabine Neches Waterway: Orange Truning Basin to Highway 90 Bridge



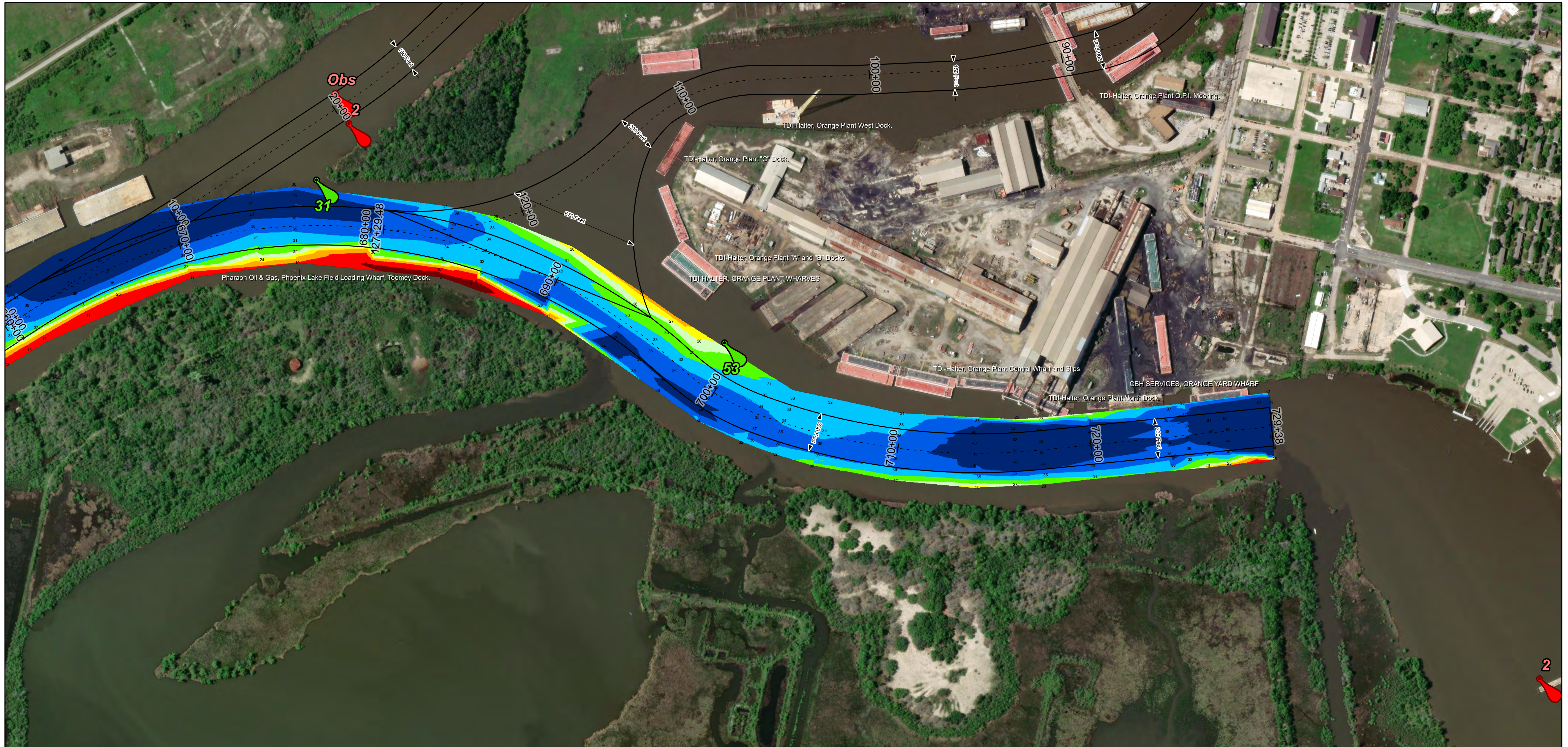
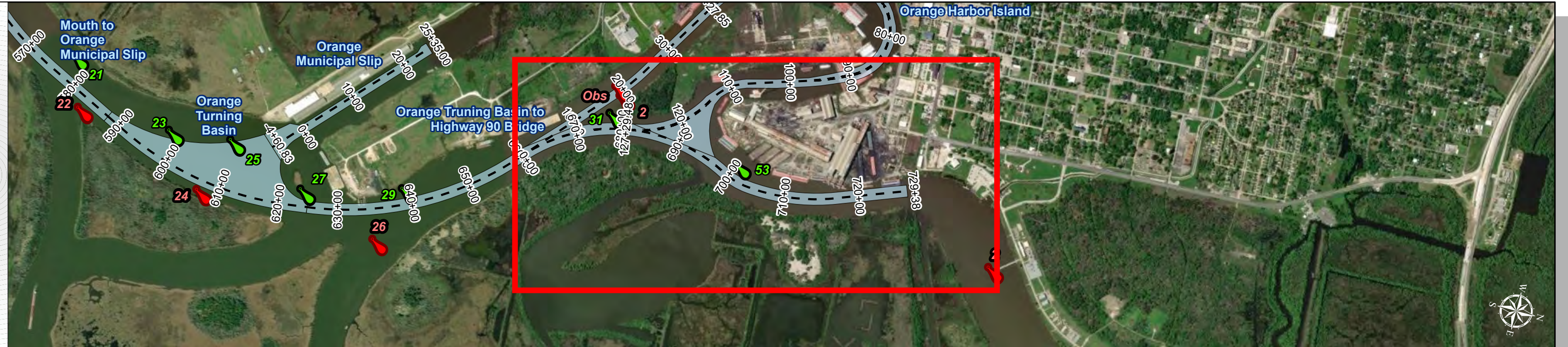
**S. Army Corps of Engineers
Galveston District**



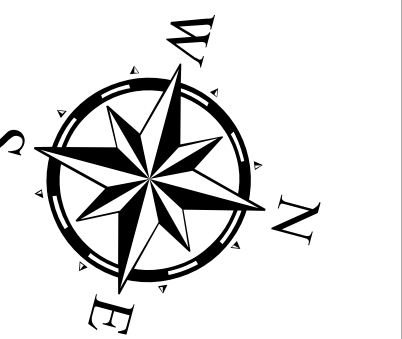
Regional Extent



Dredging Reach Extent







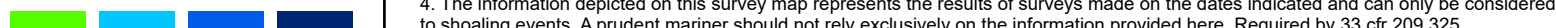


| | | |
|--|--------------------------|--------------------------------|
| Latest Survey Collection Date: 04 April 2025 | | Authorized Depth: -31ft. |
| Document Page: 2 of 2 | Website Index Number: 41 | Width Range: 200ft to 200ft |
| Scale: 1:3,000 | | Side Slope Ratio: (Rise : Run) |
| Mapped by: M3AOXPAC | | PDF Print Date: 5/8/2025 |
| Additional Imagery info: | | |



HYDROGRAPHIC SURVEY
U.S. ARMY ENGINEER DISTRICT
CORPS OF ENGINEERS
GALVESTON, TEXAS

Station: 623+63.09 to 729+38.15
SABINE NECHES
Orange Trunling Basin to Highway 90 Bridge

| | | | | | |
|--|---|--|--|--|--|
| Channel Features  Channel Center Line  Channel Toe  Channel Dimensions | Aids to Navigation  Green Side Aids  Red Side Aids  Lights |  | NOTES: 1. Horizontal coordinates are referenced to Texas State Plane Coordinate System, South Central Zone NAD83 US Survey Feet. 2. Elevations are referenced to Mean Lower Low Water (MLLW) datum. 3. This project was designed by the Galveston District of the U.S. Army Corps of Engineers. The initials and signatures and registration designations of individuals appear on these project documents within the scope of their employment as required by er1110-1-8152. 4. The information depicted on this survey map represents the results of surveys made on the dates indicated and can only be considered as indicating the general conditions existing at that time. These conditions are subject to rapid change due to shoaling events. A prudent mariner should not rely exclusively on the information provided here. Required by 33 CFR 209.325. 5. For the most up to date information please check our website at: http://www.svg.usace.army.mil/Missions/Navigation/HydrographicSurveys/ Service Layer Credits: World Topographic Map: Texas Parks & Wildlife, Esri, HERE, Garmin, INCREMENT P, USGS, METI/NASA, NGA, EPA, USDA World Imagery: Maxar World Ocean Base: Esri, GEBCO, Garmin, NaturalVue | Additional Combined Survey Dates and Stationing: COMB_SURV_INFO_HERE | Coordinate System: NAD 1983 StatePlane Texas South Central FIPS 4204 Feet Projection: Lambert Conformal Conic Dredging Reach Extent 0 0.3 0.6 1.2 Miles Hydrographic Survey Extent 0 255 510 1,020 Feet |
|--|---|--|--|--|--|