

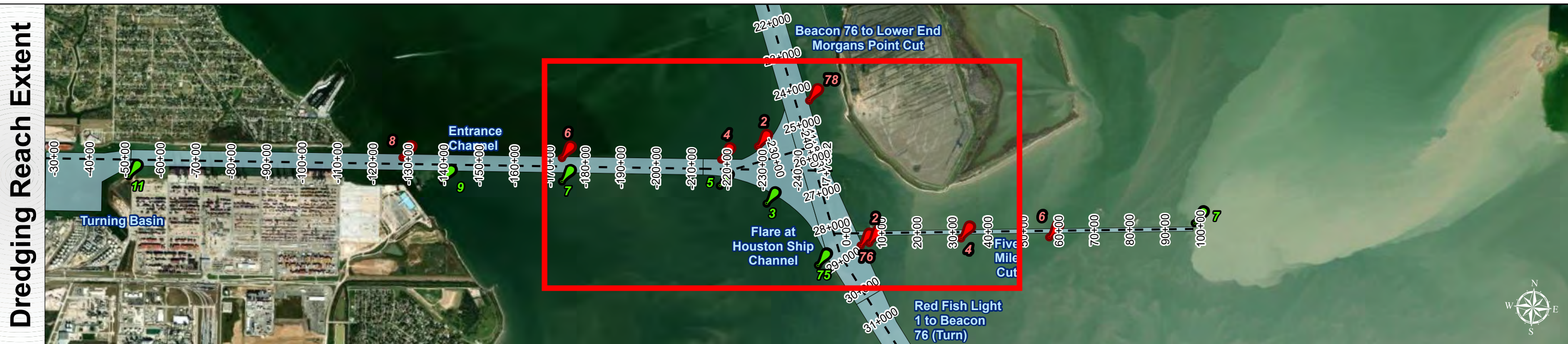
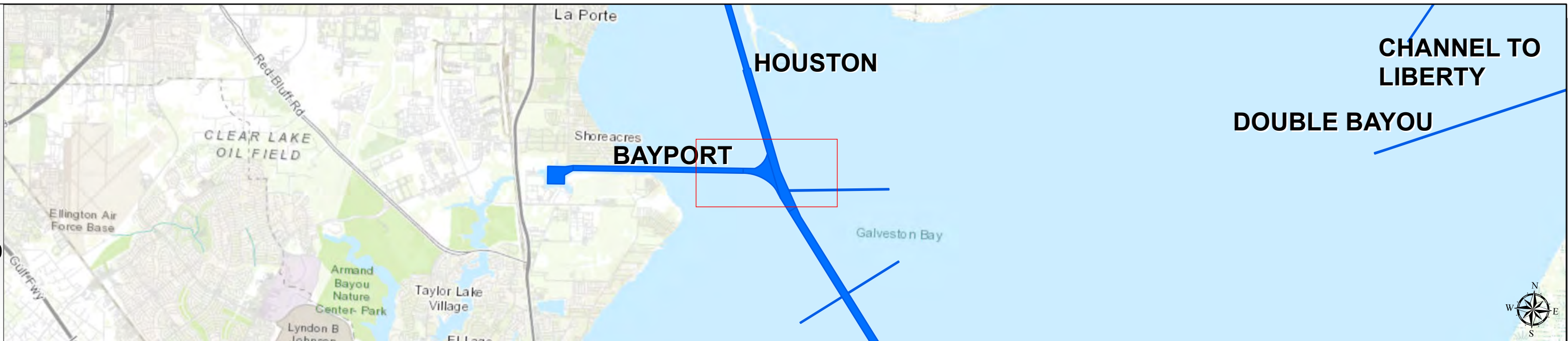
# Bayport Channel: Flare at Houston Ship Channel



U.S. Army Corps of Engineers  
Galveston District



Regional Extent



Channel Features

- Channel Center Line
- Channel Toe
- Channel Dimensions

Aids to Navigation

- Green Side Aids
- Red Side Aids
- Lights

MLLW



NOTES:

- Horizontal coordinates are referenced to Texas State Plane Coordinate System, South Central Zone NAD83 US Survey Feet.
  - Elevations are referenced to Mean Lower Low Water (MLLW) datum.
  - This project was designed by the Galveston District of the U.S. Army Corps of Engineers. The initials and signatures and registration designations of individuals appear on these project documents within the scope of their employment as required by 47 CFR 110.1-41.02.
  - The information depicted on this survey map represents the results of surveys made on the dates indicated and can only be considered as indicating the general conditions existing at that time. These conditions are subject to rapid change due to shoaling events. A prudent mariner should not rely exclusively on the information provided here. Required by 33 CFR 209.325.
  - For the most up to date information please check our website at: <http://www.sv.usace.army.mil/Missions/Navigation/HydrographicSurveys/>
- Service Layer Credits: World Topographic Map: City of Houston, HPB, Texas Parks & Wildlife, Esri, HERE, Garmin, USGS, NGA, EPA, USDA, NPS  
World Imagery: Maxar  
World Ocean Base: Esri, GEBCO, Garmin, NaturalVue

Additional Combined Survey Dates and Stationing:  
COMB\_SURV\_INFO\_HERE

Coordinate System: NAD 1983 StatePlane Texas South Central FIPS 4204 Feet  
Projection: Lambert Conformal Conic

Dredging Reach Extent  
0 0.5 1 2 Miles

Hydrographic Survey Extent  
0 430 860 1,720 Feet

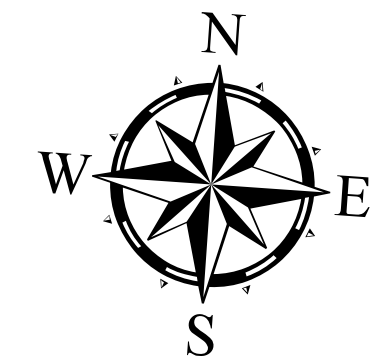
**HYDROGRAPHIC SURVEY**

U.S. ARMY ENGINEER DISTRICT  
CORPS OF ENGINEERS  
GALVESTON, TEXAS

**Station: 239+04.32 to 214+30.26**

**BAYPORT**

Flare at Houston Ship Channel



Latest Survey Collection Date: 29 May 2025

Document Page: 1 of 1

Website Index Number: 1

Scale: 1:5,000

Mapped by: M3AOXPAC

Additional Imagery info:

Authorized Depth: -46.5ft.

Width Range: 455ft to 4425ft

Side Slope Ratio: 1:9.0 (Rise : Run)

PDF Print Date: 6/6/2025