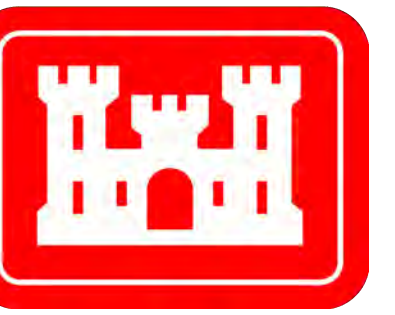
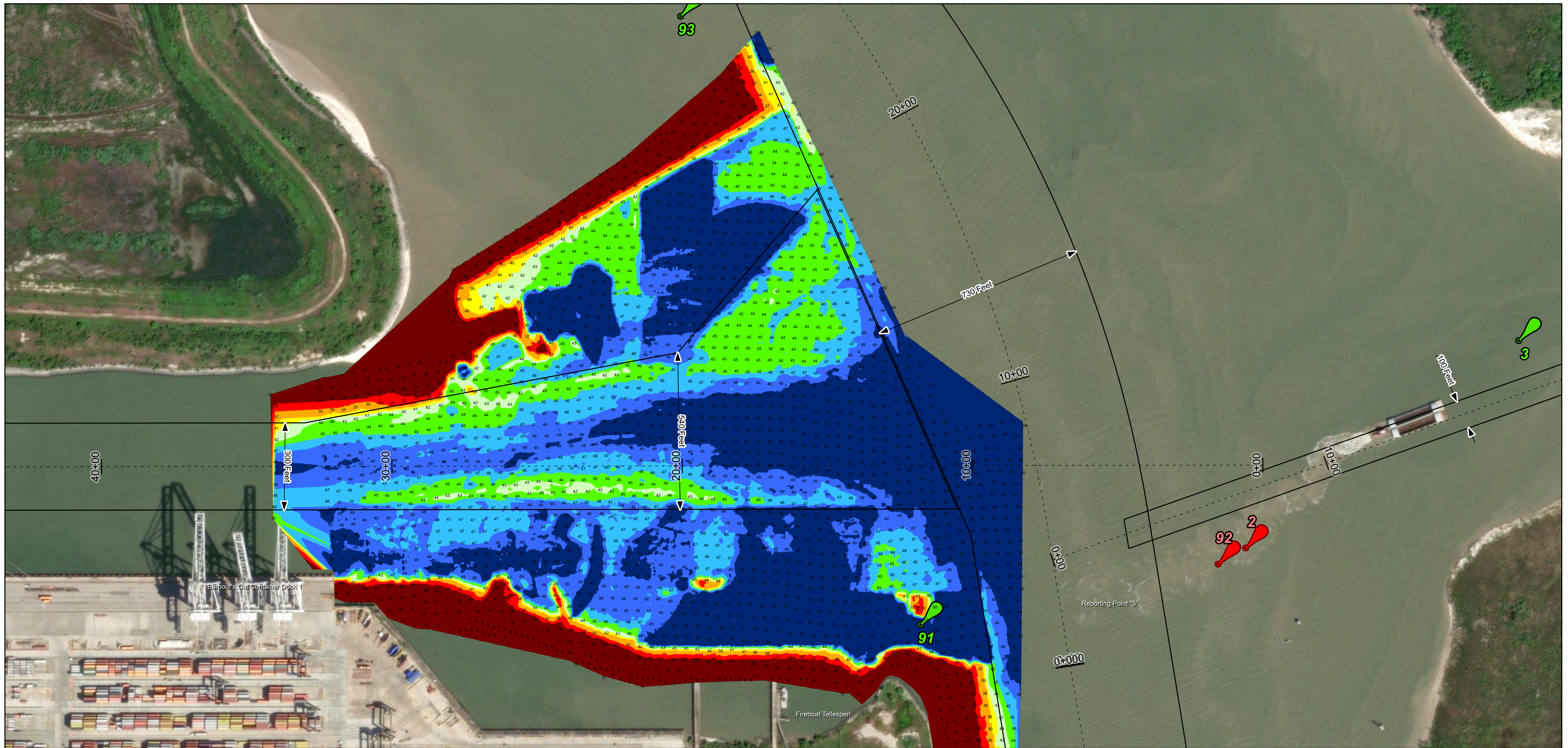
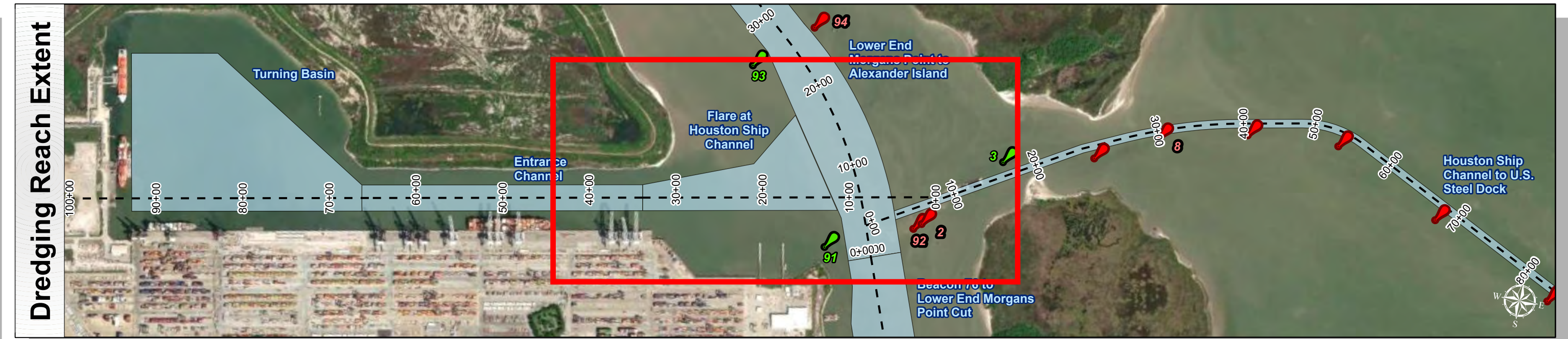


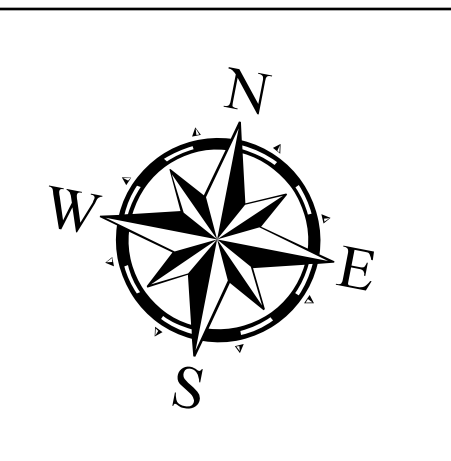
# Barbours Terminal Channel: Flare at Houston Ship Channel



U.S. Army Corps of Engineers  
Galveston District



Latest Survey Collection Date: 27 January 2026	Authorized Depth: -46.5ft.
Document Page: 1 of 1	Width Range: 300ft to 1200ft
Scale: 1:2,000	Side Slope Ratio: 1:2.5 (Rise : Run)
Mapped by: M3AOXPAC	PDF Print Date: 3/23/2026
Additional Imagery info:	



**Channel Features**

- Channel Center Line
- Channel Toe
- Channel Dimensions

**Aids to Navigation**

- Green Side Aids
- Red Side Aids
- Lights

**MLLW**

**NOTES:**

- Horizontal coordinates are referenced to Texas State Plane Coordinate System, South Central Zone NAD83 US Survey Feet.
- Elevations are referenced to Mean Lower Low Water (MLLW) datum.
- This project was designed by the Galveston District of the U.S. Army Corps of Engineers. The initials and signatures and registration designations of individuals appear on these project documents within the scope of their employment as required by 47 CFR 11.110-1, §11.112.
- The information depicted on this survey map represents the results of surveys made on the dates indicated and can only be considered as indicating the general conditions existing at that time. These conditions are subject to rapid change due to shoaling events. A prudent mariner should not rely exclusively on the information provided here. Required by 33 CFR 209.225.
- For the most up to date information please check our website at: <http://www.usace.army.mil/Missions/Navigation/HydrographicSurveys/>

Service Layer Credits: World Topographic Map: City of Houston, HPB, Texas Parks & Wildlife, Esri, HERE, Garmin, INCREMENT P, USGS, METI/NASA, NGA, EPA, USDA  
World Imagery: Microsoft, Vantor  
World Imagery: Vantor  
World Ocean Base: Esri, GEBCO, Garmin, NaturalVue

**Additional Combined Survey Dates and Stationing:**  
Combined survey dates 20251121\_CS; 20260127\_AD\_03\_8P41\_32P00

**Dredging Reach Extent**

**Hydrographic Survey Extent**

Coordinate System: NAD 1983 StatePlane Texas South Central FIPS 4204 Feet  
Projection: Lambert Conformal Conic

**HYDROGRAPHIC SURVEY**  
U.S. ARMY ENGINEER DISTRICT  
CORPS OF ENGINEERS  
GALVESTON, TEXAS

**Station: 11+06 to 33+05**  
**BARBOURS**  
Flare at Houston Ship Channel