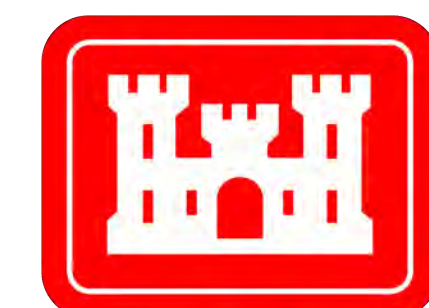
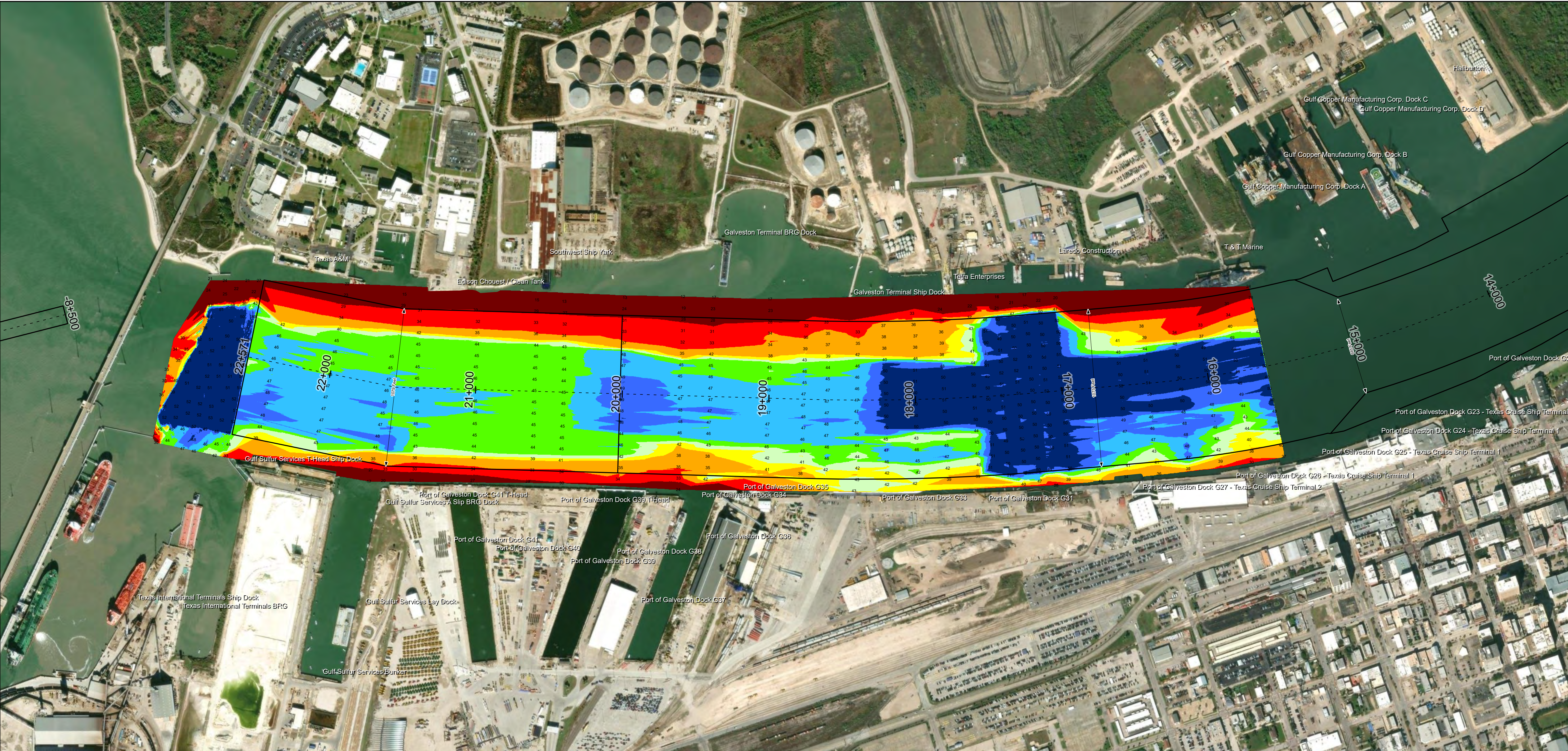


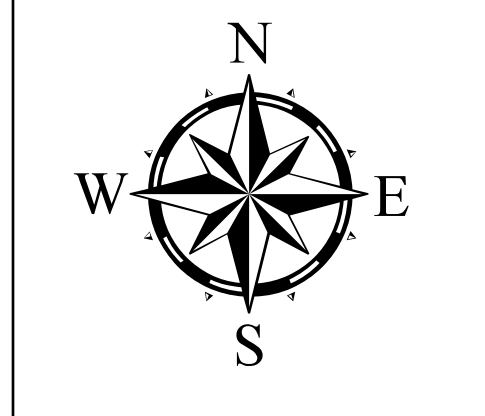
# Galveston Harbor Channel: Todd Shipyards to Pier B (43rd Street)



U.S. Army Corps of Engineers  
Galveston District



Authorized Depth: -46ft.	Width Range: 1075ft to 1075ft
Side Slope Ratio: 1:2.0 (Rise : Run)	PDF Print Date: 5/19/2026
Latest Survey Collection Date: 21 April 2026	Website Index Number: 16
Document Page: 1 of 1	Scale: 1:4,000
Mapped by: M3AOXPAC	Additional Imagery info:



**Channel Features**

- Channel Center Line
- Channel Toe
- Channel Dimensions

**Aids to Navigation**

- Green Side Aids
- Red Side Aids
- Lights

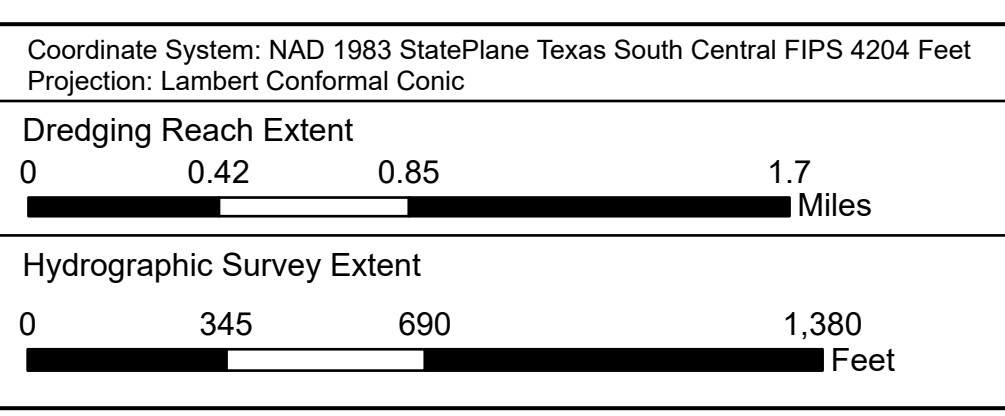
**MLLW**

**NOTES:**

- Horizontal coordinates are referenced to Texas State Plane Coordinate System, South Central Zone NAD83 US Survey Feet.
- Elevations are referenced to Mean Lower Low Water (MLLW) datum.
- This project was designed by the Galveston District of the U.S. Army Corps of Engineers. The initials and signatures and registration designations of individuals appear on these project documents within the scope of their employment as required by 47 CFR 111.113-111.1132.
- The information depicted on this survey map represents the results of surveys made on the dates indicated and can only be considered as indicating the general conditions existing at that time. These conditions are subject to rapid change due to shoaling events. A prudent mariner should not rely exclusively on the information provided here. Required by 33 CFR 209.225.
- For the most up to date information please check our website at: <http://www.usace.army.mil/Missions/Navigation/HydrographicSurveys/>

Service Layer Credits: World Topographic Map, Texas Parks & Wildlife, Esri, HERE, Garmin, USGS, NGA, EPA, USDA, NPS, World Imagery, Vector, World Ocean Base, Esri, GEBCO, Garmin, NaturalVue

**Additional Combined Survey Dates and Stationing:**  
 Combined survey dates 20260316\_CS\_T01\_15P600\_22P571; 20260403\_AD\_03\_17P000\_17P500; 20260421\_AD\_05\_22P926.27\_23P076.27



**HYDROGRAPHIC SURVEY**  
 U.S. ARMY ENGINEER DISTRICT  
 CORPS OF ENGINEERS  
 GALVESTON, TEXAS

**Station: 15+600 to 22+571**  
**GALVESTON**  
 Todd Shipyards to Pier B (43rd Street)