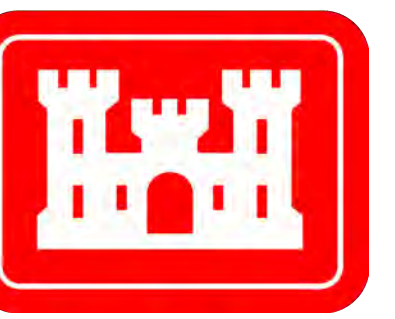
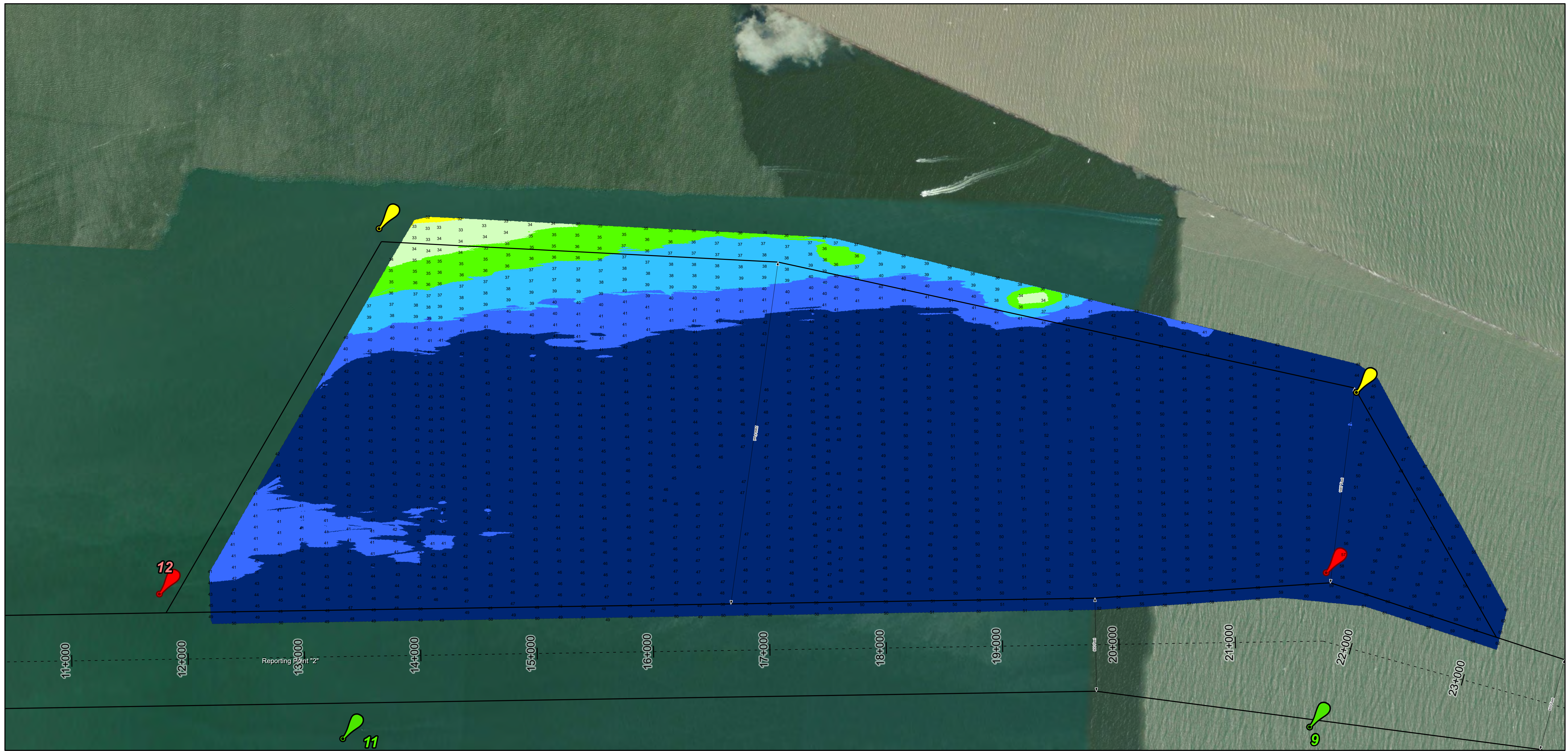
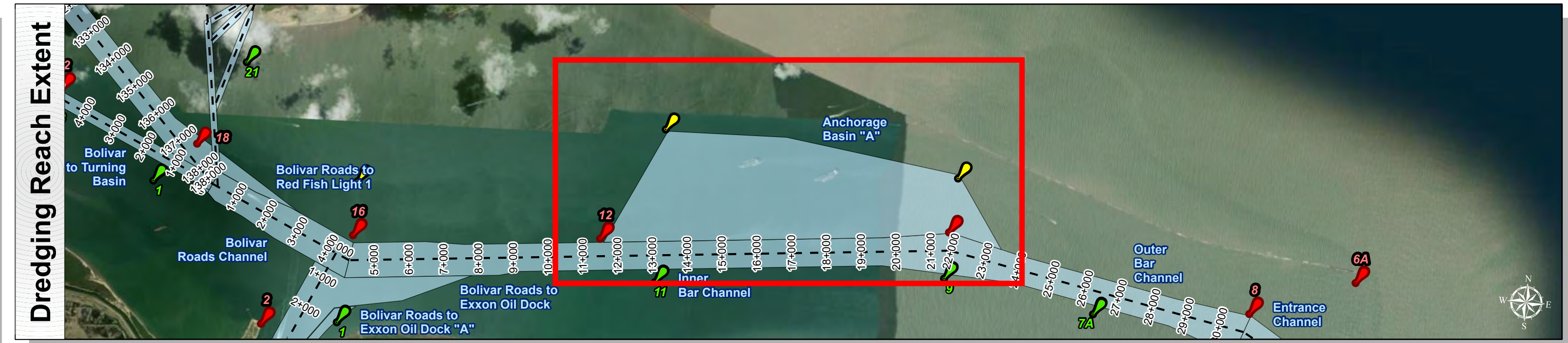
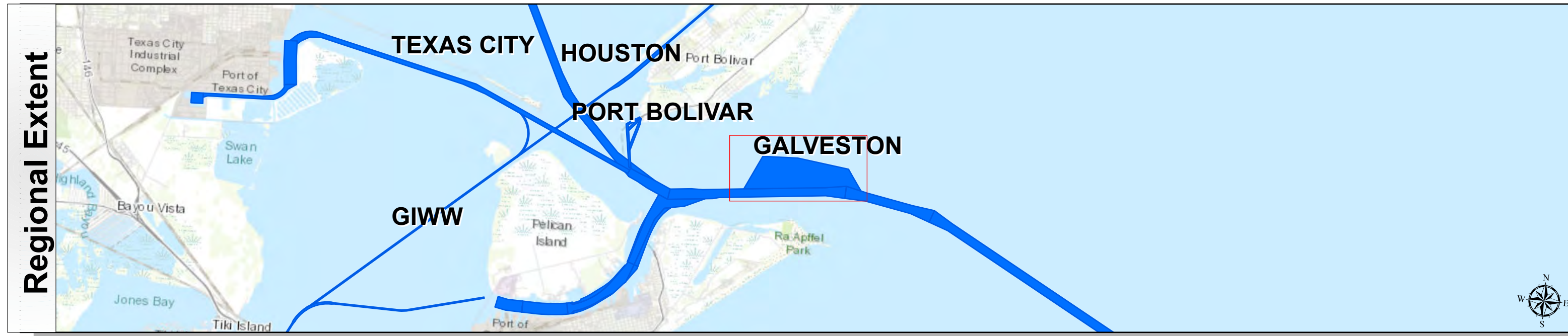


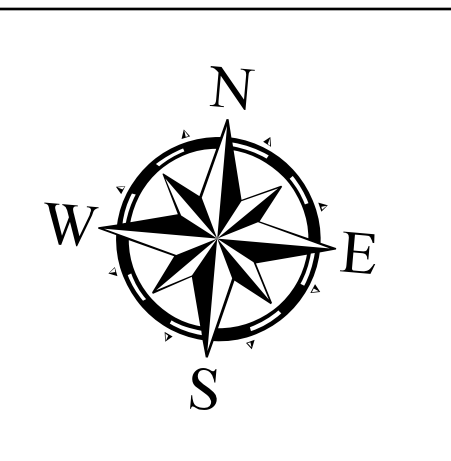
Galveston Entrance Channel: Anchorage Basin "A"



U.S. Army Corps of Engineers
Galveston District



Latest Survey Collection Date: 16 April 2026	Authorized Depth: -37ft.
Document Page: 1 of 1	Width Range: 1700ft to 3100ft
Scale: 1:5,000	Side Slope Ratio: (Rise : Run)
Mapped by: M3AOXPAC	PDF Print Date: 5/29/2026
Additional Imagery info:	



Channel Features

- Channel Center Line
- Channel Toe
- Channel Dimensions

Aids to Navigation

- Green Side Aids
- Red Side Aids
- Lights

MLLW

NOTES:

- Horizontal coordinates are referenced to Texas State Plane Coordinate System, South Central Zone NAD83 US Survey Feet.
- Elevations are referenced to Mean Lower Low Water (MLLW) datum.
- This project was designed by the Galveston District of the U.S. Army Corps of Engineers. The initials and signatures and registration designations of individuals appear on these project documents within the scope of their employment as required by er1110-1&132.
- The information depicted on this survey map represents the results of surveys made on the dates indicated and can only be considered as indicating the general conditions existing at that time. These conditions are subject to rapid change due to shoaling events. A prudent mariner should not rely exclusively on the information provided here. Required by 33 CFR 209.325
- For the most up to date information please check our website at: <http://www.usace.army.mil/Missions/Navigation/HydrographicSurveys/>

Service Layer Credits: World Topographic Map: Texas Parks & Wildlife, Esri, HERE, Garmin, USGS, NGA, EPA, USDA, NPS
World Imagery: Vector
World Ocean Base: Esri, GEBCO, Garmin, NaturalVue

Additional Combined Survey Dates and Stationing:
COMB_SURV_INFO_HERE

Dredging Reach Extent

Hydrographic Survey Extent

Coordinate System: NAD 1983 StatePlane Texas South Central FIPS 4204 Feet
Projection: Lambert Conformal Conic

HYDROGRAPHIC SURVEY
U.S. ARMY ENGINEER DISTRICT
CORPS OF ENGINEERS
GALVESTON, TEXAS

Station: 23+200 to 12+200
GALVESTON
Anchorage Basin "A"