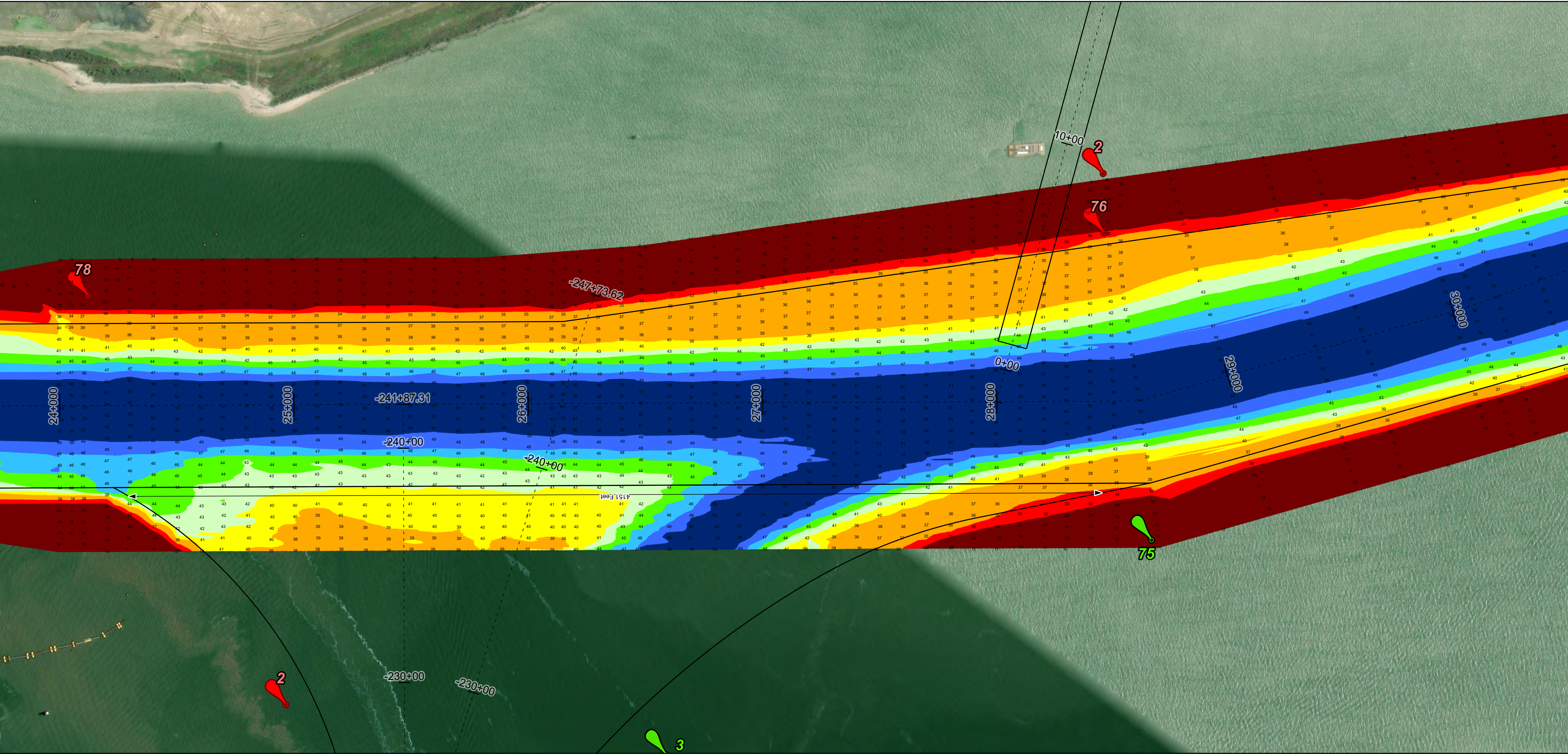
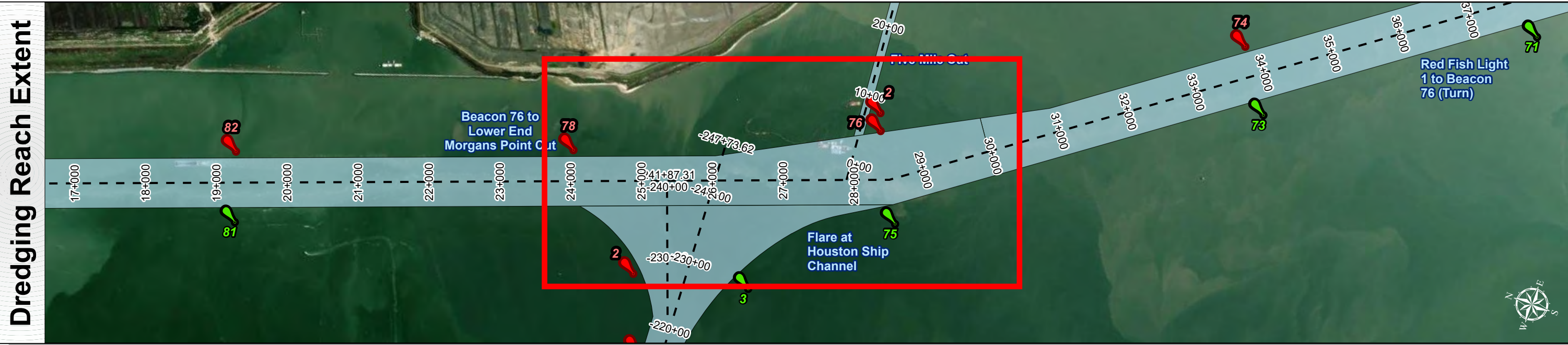
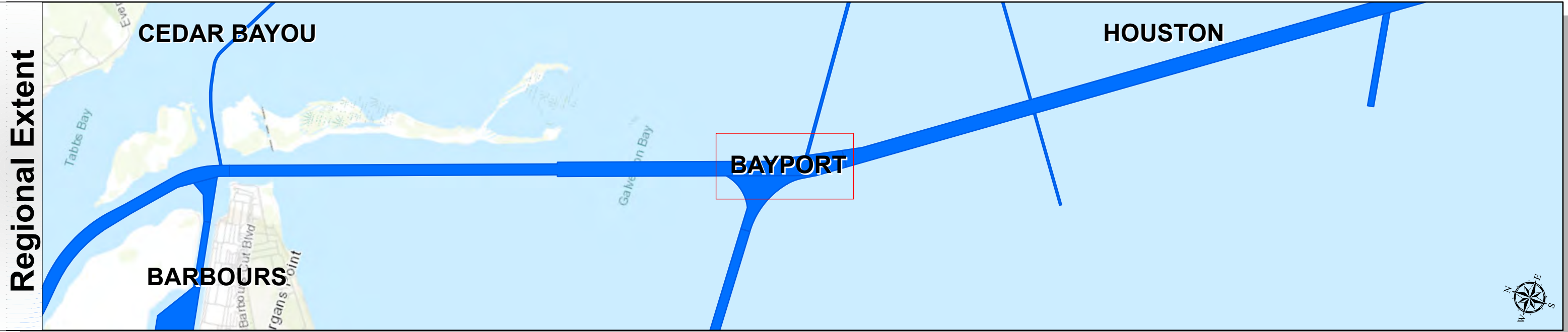


Houston Ship Channel: Beacon 76 to Lower End Morgans Point Cut



U.S. Army Corps of Engineers
Galveston District



Channel Features

- Channel Center Line
- Channel Toe
- Channel Dimensions

Aids to Navigation

- Green Side Aids
- Red Side Aids
- Lights

MLLW

≤ 30	30 - 35	35 - 40	40 - 42	42 - 44	44 - 46	46 - 48	48 - 50	> 50
------	---------	---------	---------	---------	---------	---------	---------	------

NOTES:
1. Horizontal coordinates are referenced to Texas State Plane Coordinate System, South Central Zone NAD83 US Survey Feet.
2. Elevations are referenced to Mean Lower Low Water (MLLW) datum.
3. This project was designed by the Galveston District of the U.S. Army Corps of Engineers. The initials and signatures and registration designations of individuals appear on these project documents within the scope of their employment as required by 47CFR 110.1-41.02.
4. The information depicted on this survey map represents the results of surveys made on the dates indicated and can only be considered as indicating the general conditions existing at that time. These conditions are subject to rapid change due to shoaling events. A prudent mariner should not rely exclusively on the information provided here. Required by 33 CFR 209.325.
5. For the most up to date information please check our website at: <http://www.saw.usace.army.mil/Missions/Navigation/HydrographicSurveys/>
Service Layer Credits: World Topographic Map: City of Houston, HPB, Texas Parks & Wildlife, Esri, HERE, Garmin, INCREMENT P, USGS, METINASA, NGA, EPA, USDA
World Imagery: Maxar
World Ocean Base: Esri, GEBCO, Garmin, NaturalVue

Additional Combined Survey Dates and Stationing:
Combined survey dates 20241202; 20250306_PR_25P400_0P000; 20250319_PR_30P090_25P400;
20250530_BD_06_28P605_24P000

Coordinate System: NAD 1983 StatePlane Texas South Central FIPS 4204 Feet
Projection: Lambert Conformal Conic

Dredging Reach Extent

0	0.25	0.5	1
---	------	-----	---

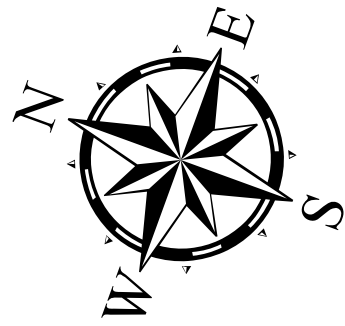
Miles

Hydrographic Survey Extent

0	215	430	860
---	-----	-----	-----

Feet

Latest Survey Collection Date: 30 May 2025		Authorized Depth: -46ft.
Document Page: 1 of 5	Website Index Number: 20	Width Range: 700ft to 700ft
Scale: 1:2,500		Side Slope Ratio: 1:2.5 (Rise : Run)
Mapped by: M3AOXPAC		PDF Print Date: 6/26/2025
Additional Imagery info:		

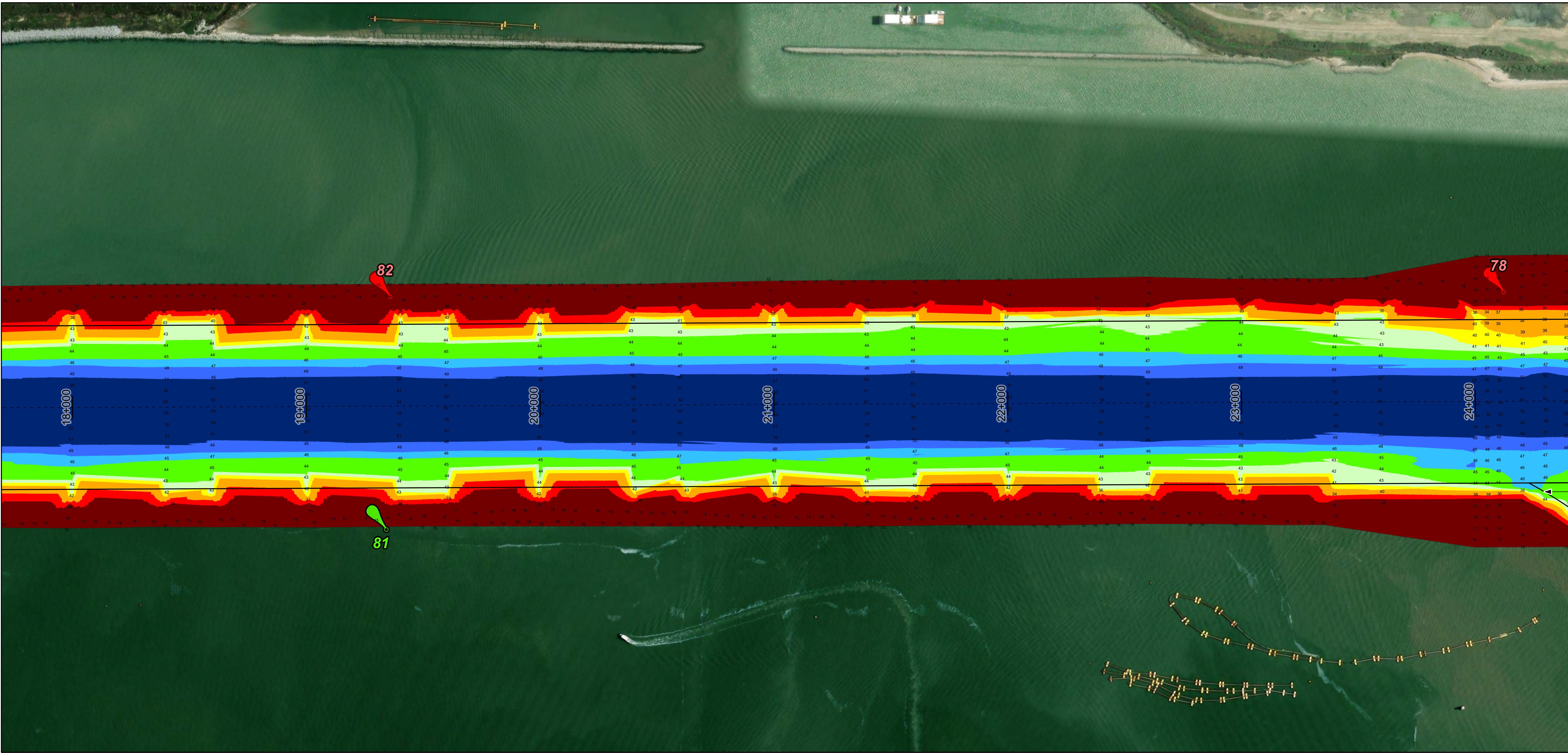
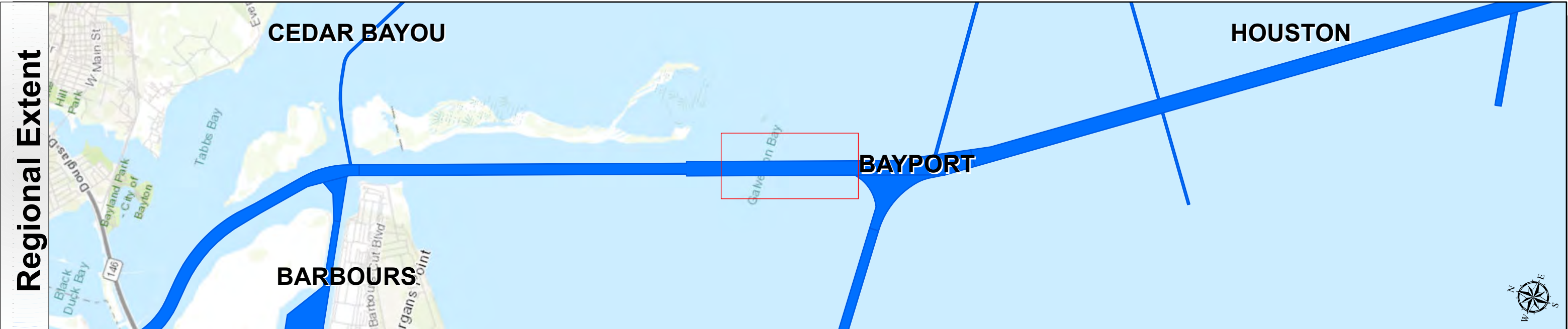


HYDROGRAPHIC SURVEY
U.S. ARMY CORPS OF ENGINEERS
GALVESTON, TEXAS
HOUSTON
Station: 28+604.06 to -0+003.944 (Bay)
Beacon 76 to Lower End Morgans Point Cut

Houston Ship Channel: Beacon 76 to Lower End Morgans Point Cut



U.S. Army Corps of Engineers
Galveston District



Channel Features

- - - Channel Center Line
- Channel Toe
- ↔ Channel Dimensions

Aids to Navigation

- Green Side Aids
- Red Side Aids
- Lights

MLLW

NOTES:

- Horizontal coordinates are referenced to Texas State Plane Coordinate System, South Central Zone NAD83 US Survey Feet.
- Elevations are referenced to Mean Lower Low Water (MLLW) datum.
- This project was designed by the Galveston District of the U.S. Army Corps of Engineers. The initials and signatures and registration designations of individuals appear on these project documents within the scope of their employment as required by 47CFR 111.1-41.02.
- The information depicted on this survey map represents the results of surveys made on the dates indicated and can only be considered as indicating the general conditions existing at that time. These conditions are subject to rapid change due to shoaling events. A prudent mariner should not rely exclusively on the information provided here. Required by 33 CFR 209.325
- For the most up to date information please check our website at: <http://www.swg.usace.army.mil/Missions/Navigation/HydrographicSurveys/>

Service Layer Credits: World Topographic Map: City of Houston, HPB, Texas Parks & Wildlife, Esri, HERE, Garmin, INCREMENT P, USGS, METINASA, NGA, EPA, USDA
World Imagery: Maxar
World Ocean Base: Esri, GEBCO, Garmin, NaturalVue

Additional Combined Survey Dates and Stationing:

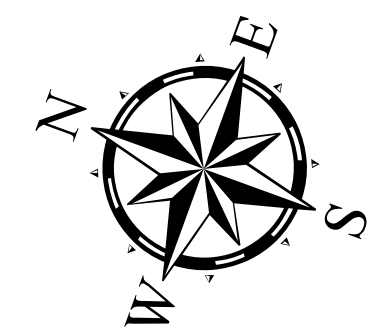
Combined survey dates 20241202; 20250306_PR_25P400_0P000; 20250319_PR_30P090_25P400; 20250530_BD_06_28P605_24P000

Coordinate System: NAD 1983 StatePlane Texas South Central FIPS 4204 Feet
Projection: Lambert Conformal Conic

Dredging Reach Extent

Hydrographic Survey Extent

Latest Survey Collection Date: 30 May 2025	Authorized Depth: -46ft.
	Width Range: 700ft to 700ft
Document Page: 2 of 5	Side Slope Ratio: 1:2.5 (Rise : Run)
	PDF Print Date: 6/26/2025
Website Index Number: 21	
Scale: 1:2,500	
Mapped by: M3AOXPAC	
Additional Imagery info:	



HYDROGRAPHIC SURVEY

U.S. ARMY ENGINEER DISTRICT
CORPS OF ENGINEERS
GALVESTON, TEXAS

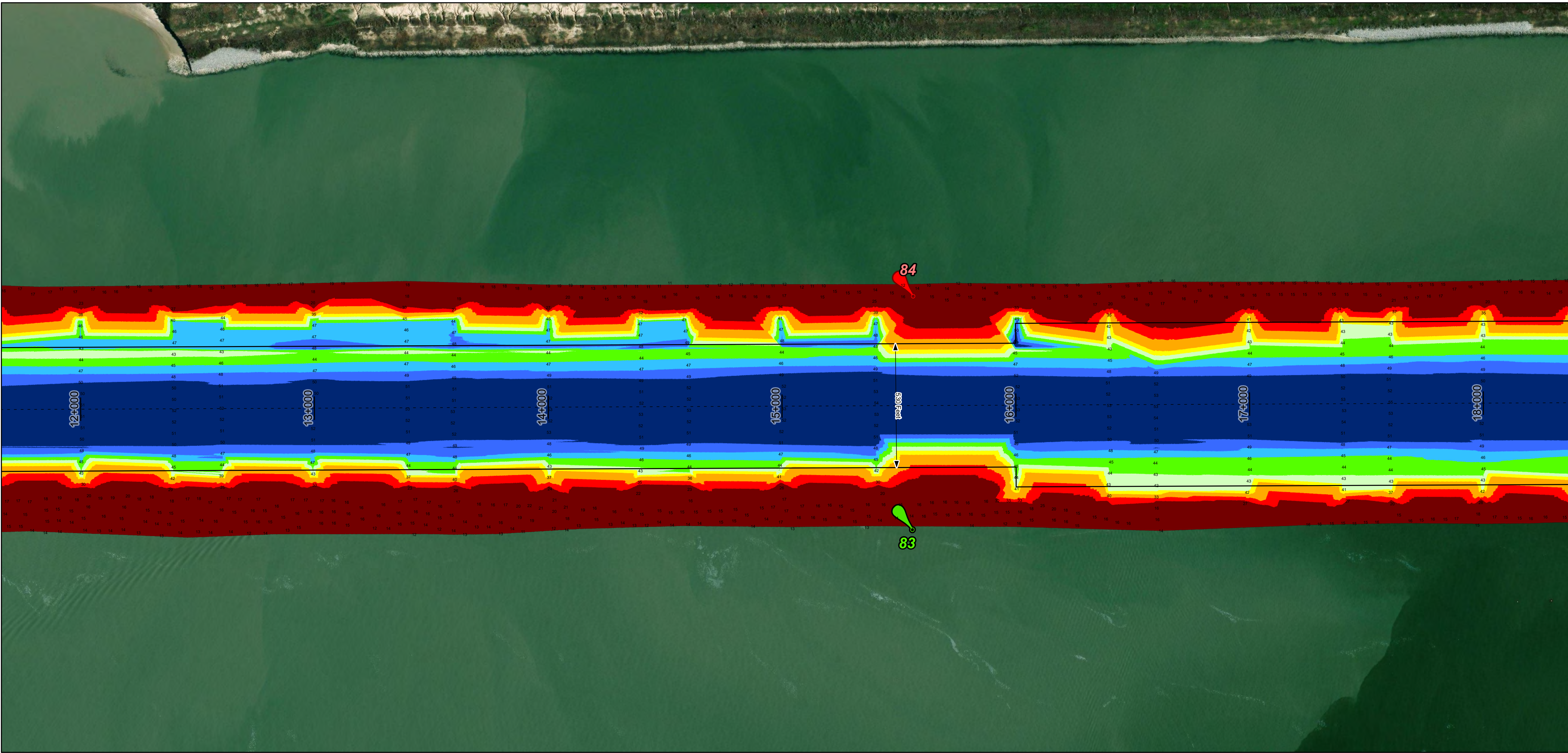
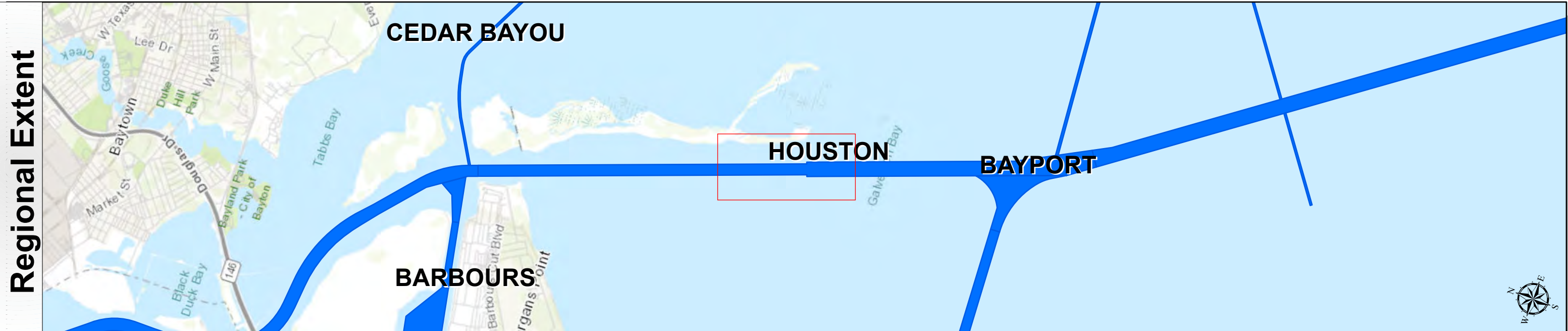
Station: 28+604.06 to -0+003.944 (Bay)

Beacon 76 to Lower End Morgans Point Cut

Houston Ship Channel: Beacon 76 to Lower End Morgans Point Cut



U.S. Army Corps of Engineers
Galveston District



Channel Features

- Channel Center Line
- Channel Toe
- Channel Dimensions

Aids to Navigation

- Green Side Aids
- Red Side Aids
- Lights

MLLW

NOTES:

- Horizontal coordinates are referenced to Texas State Plane Coordinate System, South Central Zone NAD83 US Survey Feet.
- Elevations are referenced to Mean Lower Low Water (MLLW) datum.
- This project was designed by the Galveston District of the U.S. Army Corps of Engineers. The initials and signatures and registration designations of individuals appear on these project documents within the scope of their employment as required by 47CFR 110.1-41.02.
- The information depicted on this survey map represents the results of surveys made on the dates indicated and can only be considered as indicating the general conditions existing at that time. These conditions are subject to rapid change due to shoaling events. A prudent mariner should not rely exclusively on the information provided here. Required by 33 CFR 209.325
- For the most up to date information please check our website at: <http://www.ssg.usace.army.mil/Missions/Navigation/HydrographicSurveys/>

Service Layer Credits: World Topographic Map: City of Houston, HPB, Texas Parks & Wildlife, Esri, HERE, Garmin, INCREMENT P, USGS, METINASA, NGA, EPA, USDA
World Imagery: Maxar
World Ocean Base: Esri, GEBCO, Garmin, NaturalVue

Additional Combined Survey Dates and Stationing:

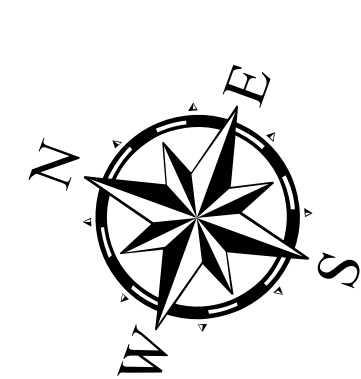
Combined survey dates 20241202; 20250306_PR_25P400_0P000; 20250319_PR_30P090_25P400; 20250530_BD_06_28P605_24P000

Coordinate System: NAD 1983 StatePlane Texas South Central FIPS 4204 Feet
Projection: Lambert Conformal Conic

Dredging Reach Extent

Hydrographic Survey Extent

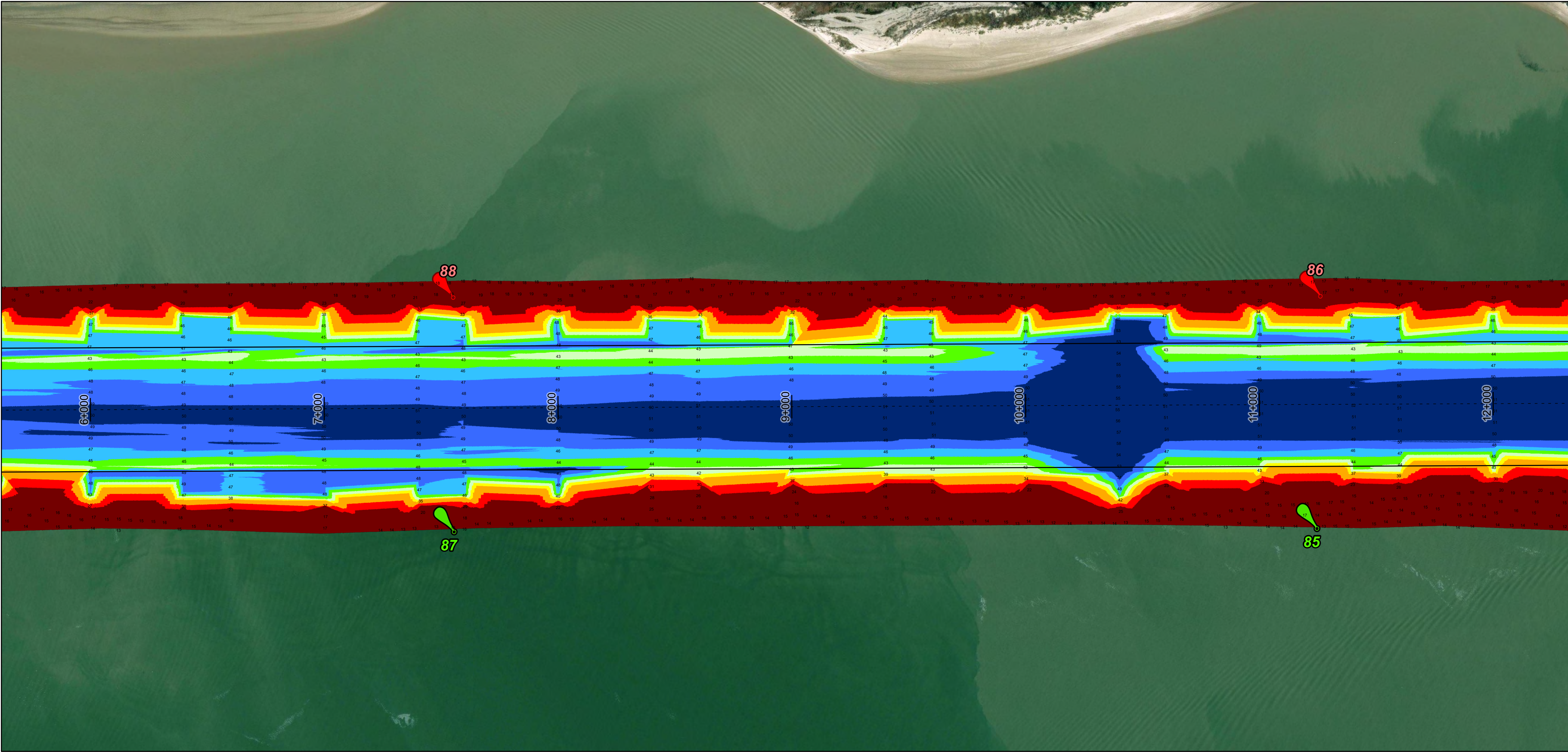
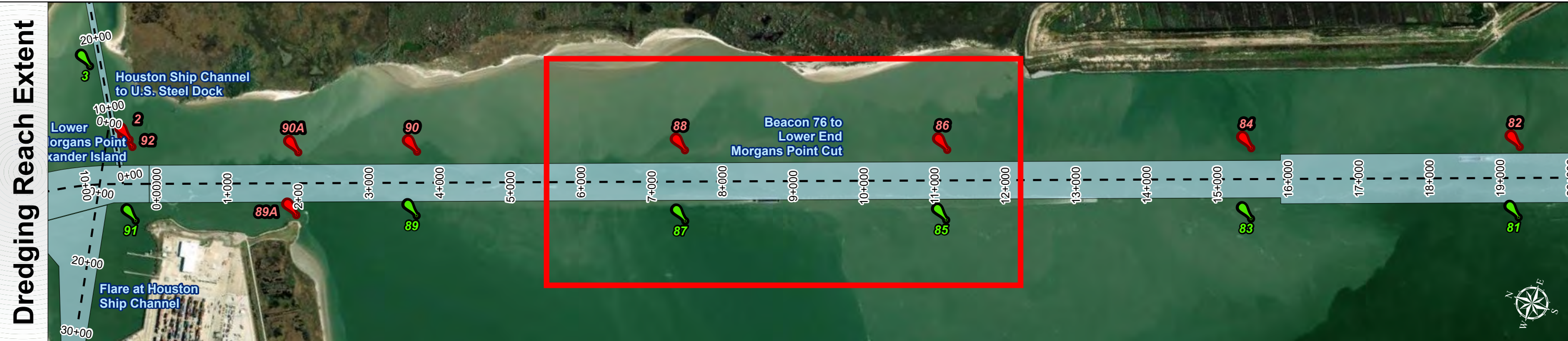
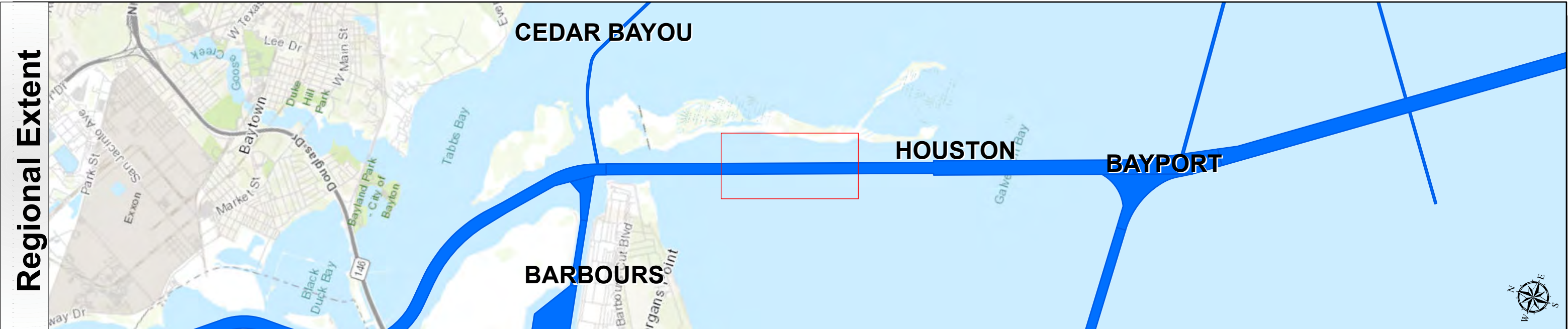
Latest Survey Collection Date: 30 May 2025	Authorized Depth: -46ft.	
	Width Range: 700ft to 700ft	
Document Page: 3 of 5	Website Index Number: 22	Side Slope Ratio: 1:2.5 (Rise : Run)
Scale: 1:2,500		PDF Print Date: 6/26/2025
Mapped by: M3AOXPAC	Additional Imagery info:	



HYDROGRAPHIC SURVEY
U.S. ARMY ENGINEER DISTRICT
CORPS OF ENGINEERS
GALVESTON, TEXAS

Station: 28+604.06 to -0+003.944 (Bay)
Beacon 76 to Lower End Morgans Point Cut

Houston Ship Channel: Beacon 76 to Lower End Morgans Point Cut



Channel Features

- Channel Center Line
- Channel Toe
- Channel Dimensions

Aids to Navigation

- Green Side Aids
- Red Side Aids
- Lights

MLLW

≤ 30	30 - 35	35 - 40	40 - 42	42 - 44	44 - 46	46 - 48	48 - 50	> 50
Red	Orange	Yellow	Light Green	Green	Dark Green	Blue	Dark Blue	Black

NOTES:
1. Horizontal coordinates are referenced to Texas State Plane Coordinate System, South Central Zone NAD83 US Survey Feet.
2. Elevations are referenced to Mean Lower Low Water (MLLW) datum.
3. This project was designed by the Galveston District of the U.S. Army Corps of Engineers. The initials and signatures and registration designations of individuals appear on these project documents within the scope of their employment as required by 47CFR 110.1-41.02.
4. The information depicted on this survey map represents the results of surveys made on the dates indicated and can only be considered as indicating the general conditions existing at that time. These conditions are subject to rapid change due to shoaling events. A prudent mariner should not rely exclusively on the information provided here. Required by 33 CFR 209.325.
5. For the most up to date information please check our website at: <http://www.saw.usace.army.mil/Missions/Navigation/HydrographicSurveys/>
Service Layer Credits: World Topographic Map: City of Houston, HPB, Texas Parks & Wildlife, Esri, HERE, Garmin, INCREMENT P, USGS, METINASA, NGA, EPA, USDA
World Imagery: Maxar
World Ocean Base: Esri, GEBCO, Garmin, NaturalVue

Additional Combined Survey Dates and Stationing:
Combined survey dates 20241202; 20250306_PR_25P400_0P000; 20250319_PR_30P090_25P400;
20250530_BD_06_28P605_24P000

Coordinate System: NAD 1983 StatePlane Texas South Central FIPS 4204 Feet
Projection: Lambert Conformal Conic

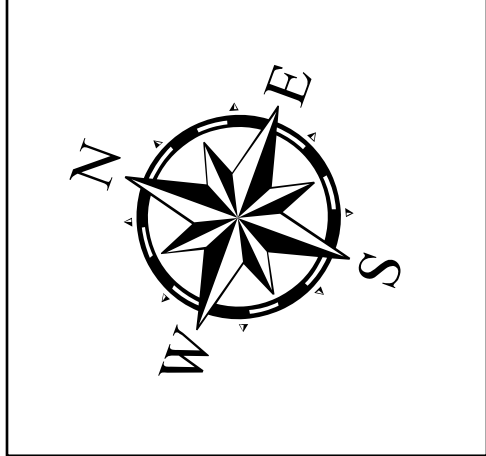
Dredging Reach Extent

0	0.25	0.5	1
Miles			

Hydrographic Survey Extent

0	215	430	860
Feet			

Latest Survey Collection Date: 30 May 2025		Authorized Depth: -45ft.
Document Page: 4 of 5	Website Index Number: 23	Width Range: 700ft to 700ft
Scale: 1:2,500		Side Slope Ratio: 1:2.5 (Rise : Run)
Mapped by: M3AOXPAC		PDF Print Date: 6/26/2025
Additional Imagery info:		



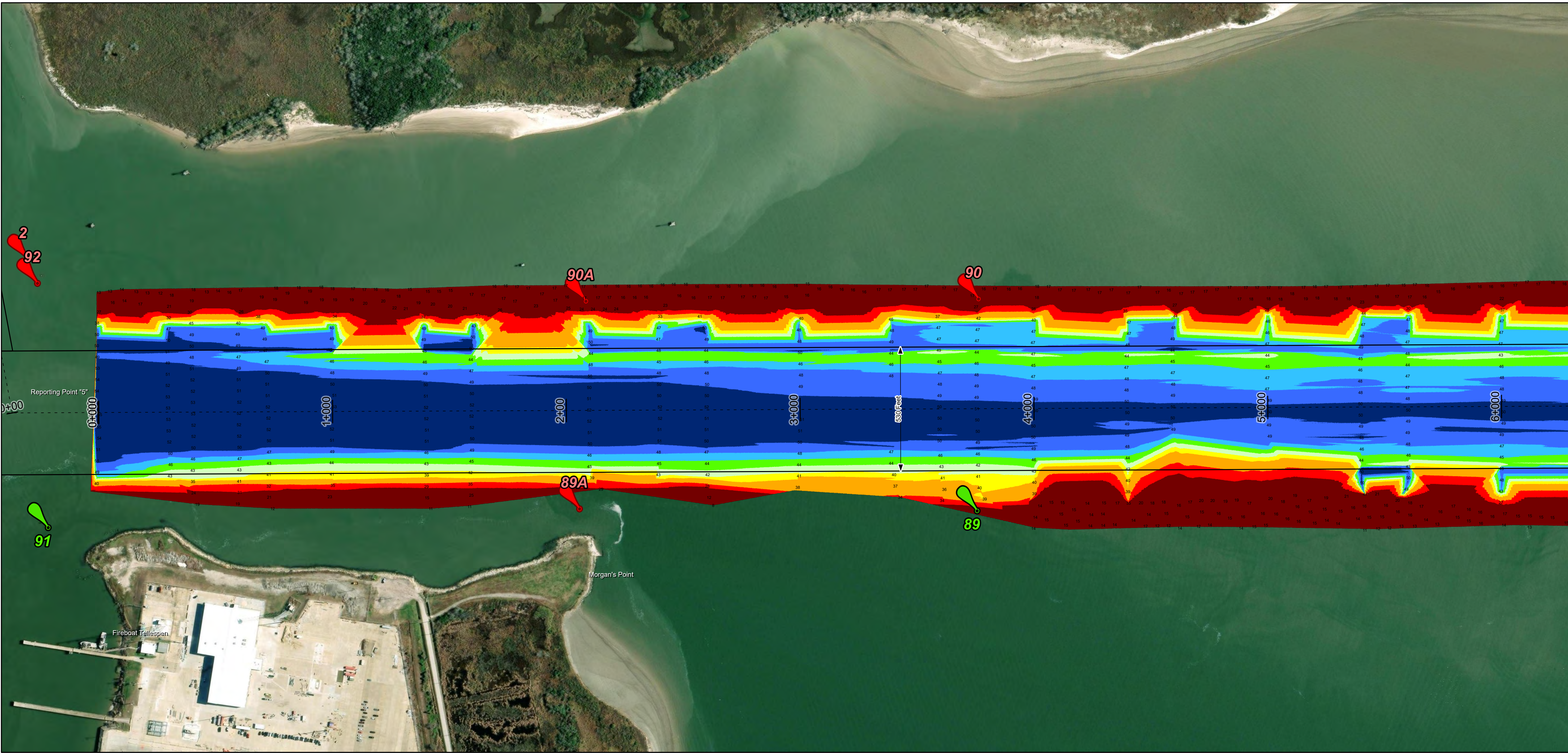
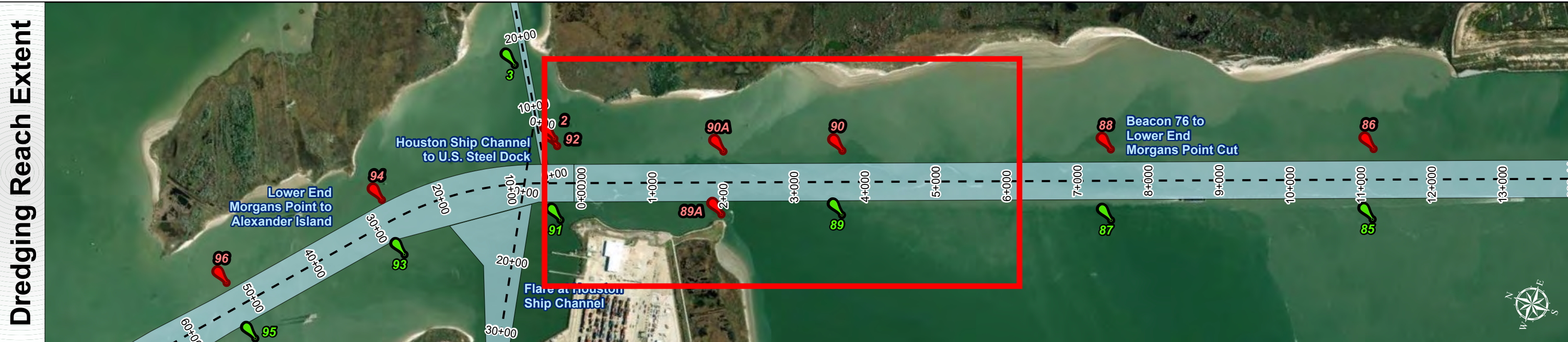
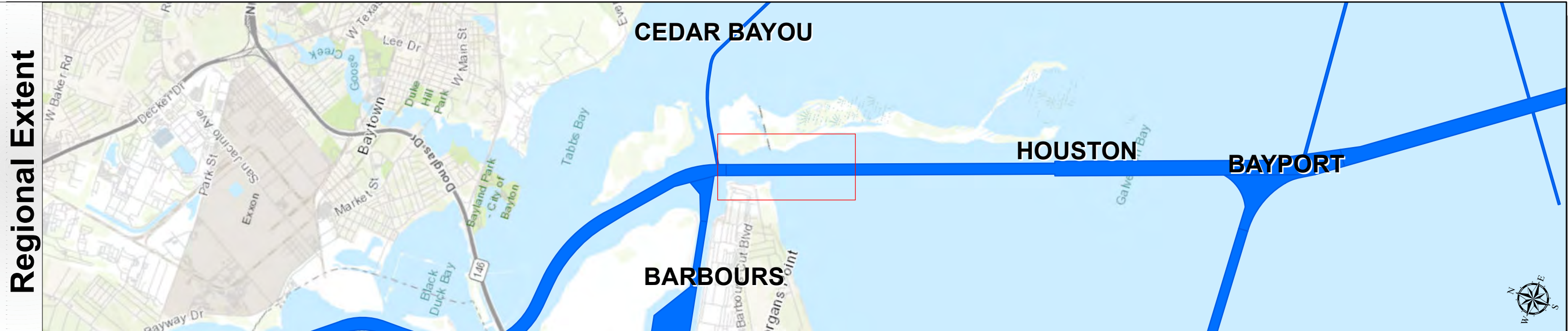
HYDROGRAPHIC SURVEY
U.S. ARMY ENGINEER DISTRICT
CORPS OF ENGINEERS
GALVESTON, TEXAS

Station: 28+604.06 to -0+003.944 (Bay)
Houston
Beacon 76 to Lower End Morgans Point Cut

Houston Ship Channel: Beacon 76 to Lower End Morgans Point Cut



U.S. Army Corps of Engineers
Galveston District



Channel Features

- Channel Center Line
- Channel Toe
- Channel Dimensions

Aids to Navigation

- Green Side Aids
- Red Side Aids
- Lights

MLLW

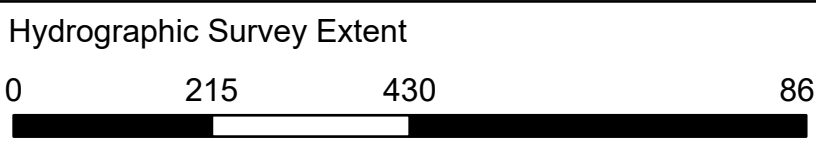
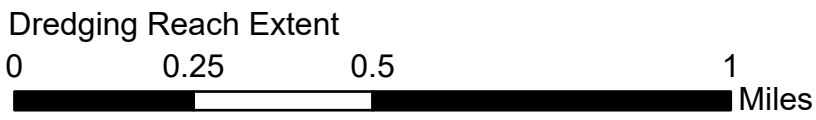


NOTES:
1. Horizontal coordinates are referenced to Texas State Plane Coordinate System, South Central Zone NAD83 US Survey Feet.
2. Elevations are referenced to Mean Lower Low Water (MLLW) datum.
3. This project was designed by the Galveston District of the U.S. Army Corps of Engineers. The initials and signatures and registration designations of individuals appear on these project documents within the scope of their employment as required by 47CFR 110.1-41.02.
4. The information depicted on this survey map represents the results of surveys made on the dates indicated and can only be considered as indicating the general conditions existing at that time. These conditions are subject to rapid change due to shoaling events. A prudent mariner should not rely exclusively on the information provided here. Required by 33 CFR 209.325
5. For the most up to date information please check our website at: <http://www.svg.usace.army.mil/Missions/Navigation/HydrographicSurveys/>
Service Layer Credits: World Topographic Map: City of Houston, HPB, Texas Parks & Wildlife, Esri, HERE, Garmin, INCREMENT P, USGS, METINASA, NGA, EPA, USDA
World Imagery: Maxar
World Ocean Base: Esri, GEBCO, Garmin, NaturalVue

Additional Combined Survey Dates and Stationing:

Combined survey dates 20241202; 20250306_PR_25P400_0P000; 20250319_PR_30P090_25P400;
20250530_BD_06_28P605_24P000

Coordinate System: NAD 1983 StatePlane Texas South Central FIPS 4204 Feet
Projection: Lambert Conformal Conic

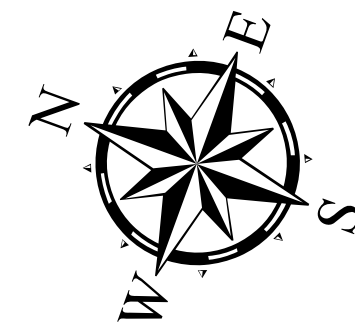


HYDROGRAPHIC SURVEY

U.S. ARMY ENGINEER DISTRICT
CORPS OF ENGINEERS
GALVESTON, TEXAS

Station: 28+604.06 to -0+003.944 (Bay)

HOUSTON
Beacon 76 to Lower End Morgans Point Cut



Latest Survey Collection Date: 30 May 2025
Document Page: 5 of 5
Scale: 1:2,500
Mapped by: M3AOXPAC
Additional Imagery info:

Authorized Depth: -45ft.

Width Range: 700ft to 700ft

Side Slope Ratio: 1:2.5 (Rise : Run)

PDF Print Date: 6/26/2025

Website Index Number: 24

Scale: 1:2,500

Side Slope Ratio: 1:2.5 (Rise : Run)

PDF Print Date: 6/26/2025