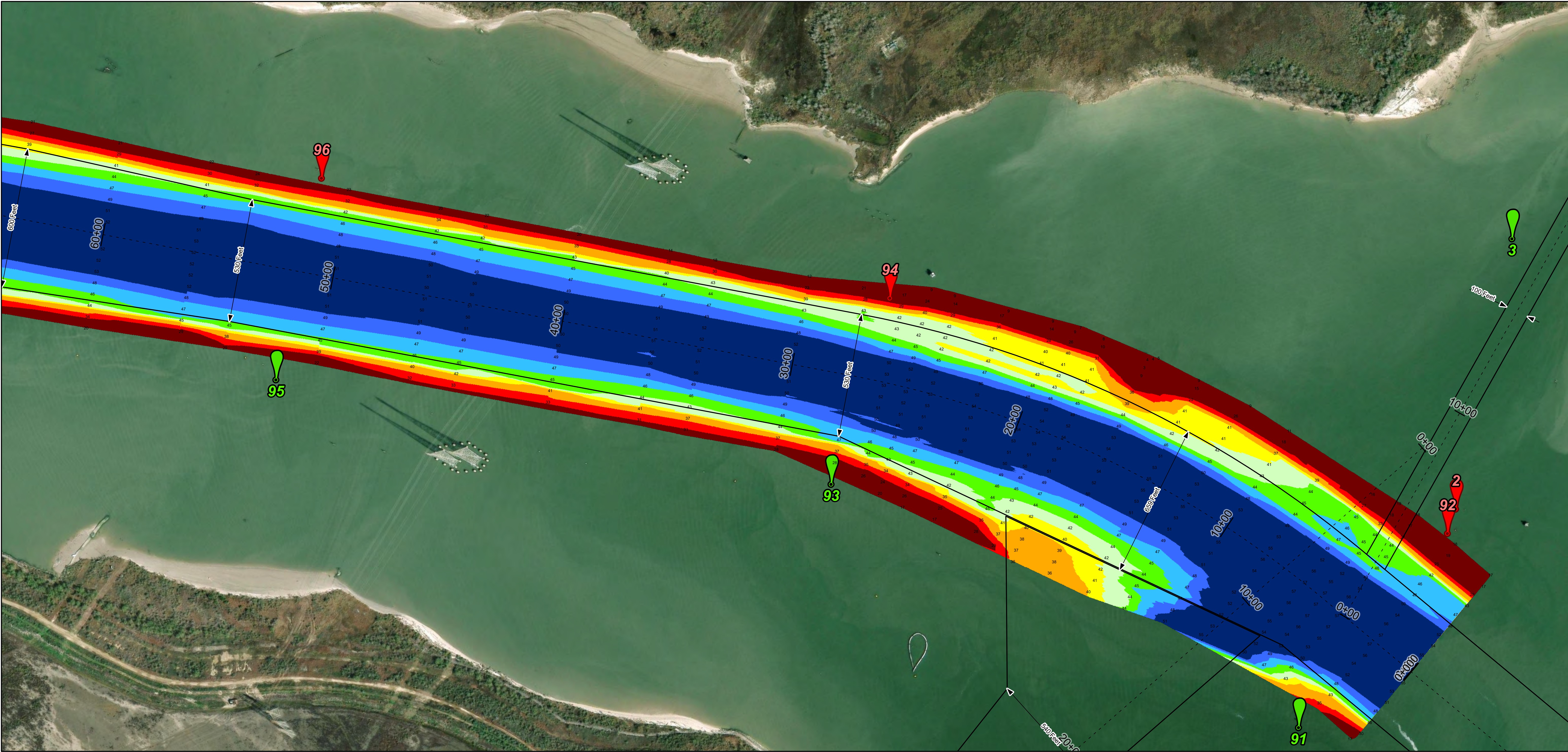
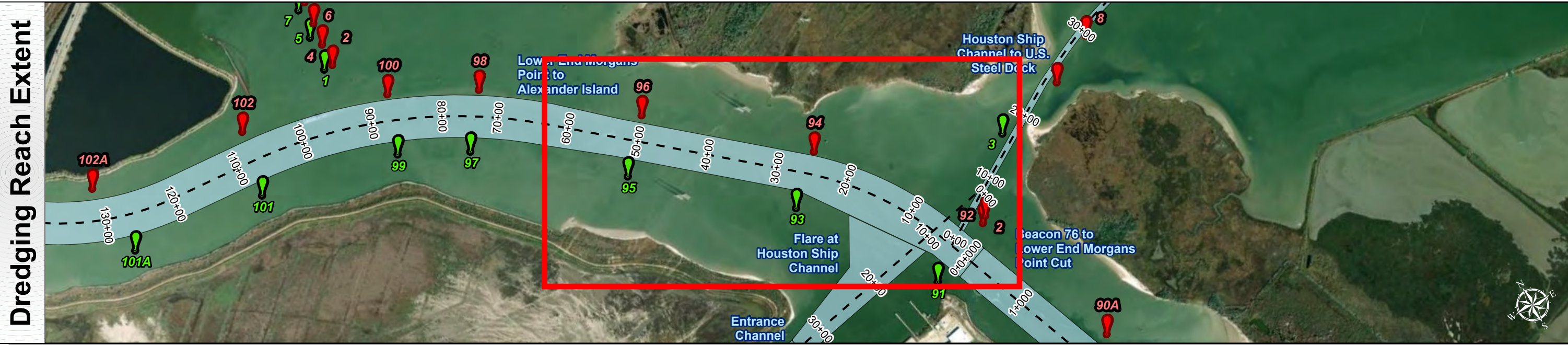
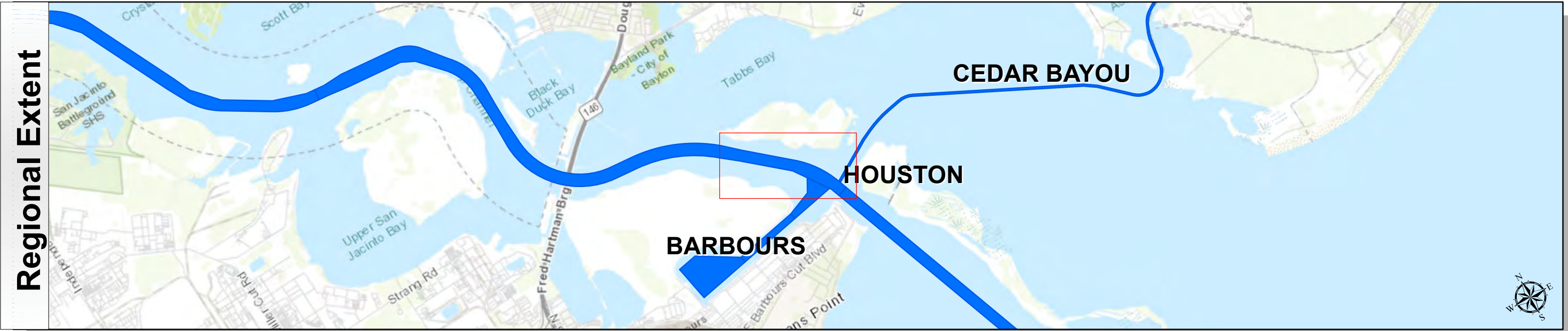


# Houston Ship Channel: Lower End Morgans Point to Alexander Island



U.S. Army Corps of Engineers  
Galveston District





**Channel Features**

- Channel Center Line
- Channel Toe
- Channel Dimensions

**Aids to Navigation**

- Green Side Aids
- Red Side Aids
- Lights

**MLLW**

30 35 40 42 44 46 48 50

NOTES:  
1. Horizontal coordinates are referenced to Texas State Plane Coordinate System, South Central Zone NAD83 US Survey Feet.  
2. Elevations are referenced to Mean Lower Low Water (MLLW) datum.  
3. This project was designed by the Galveston District of the U.S. Army Corps of Engineers. The initials and signatures and registration designations of individuals appear on these project documents within the scope of their employment as required by 47CFR 110.1-41.02.  
4. The information depicted on this survey map represents the results of surveys made on the dates indicated and can only be considered as indicating the general conditions existing at that time. These conditions are subject to rapid change due to shoaling events. A prudent mariner should not rely exclusively on the information provided here. Required by 33 CFR 209.325.  
5. For the most up to date information please check our website at: <http://www.swg.usace.army.mil/Missions/Navigation/HydrographicSurveys/>

Service Layer Credits: World Topographic Map: City of Houston, HPB, Texas Parks & Wildlife, Esri, HERE, Garmin, INCREMENT P, USGS, METINASA, NGA, EPA, USDA  
World Imagery: Maxar  
World Ocean Base: Esri, GEBCO, Garmin, NaturalVue

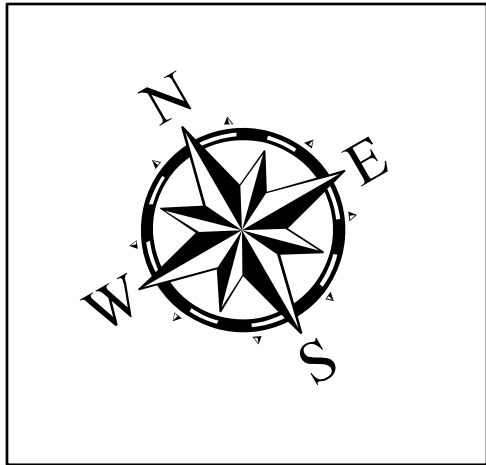
Additional Combined Survey Dates and Stationing:  
Combined survey dates 20250527\_PR\_150P00\_195P00; 20250529\_PR\_00P00\_150P00;  
20250618\_PR\_10P00\_25P00

Coordinate System: NAD 1983 StatePlane Texas South Central FIPS 4204 Feet  
Projection: Lambert Conformal Conic

Dredging Reach Extent  
0 0.25 0.5 1 Miles

Hydrographic Survey Extent  
0 215 430 860 Feet

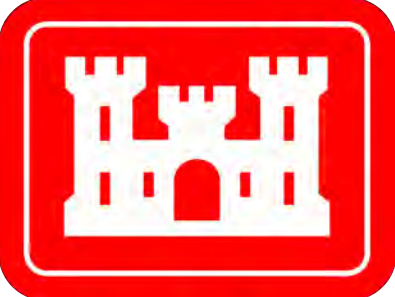
Latest Survey Collection Date: 18 June 2025		Authorized Depth: -46.5ft.
Document Page: 1 of 5	Website Index Number: 25	Width Range: 530ft to 600ft
Scale: 1:2,500		Side Slope Ratio: 1:2.5 (Rise : Run)
Mapped by: M3AOXPAC		PDF Print Date: 7/2/2025
Additional Imagery info:		



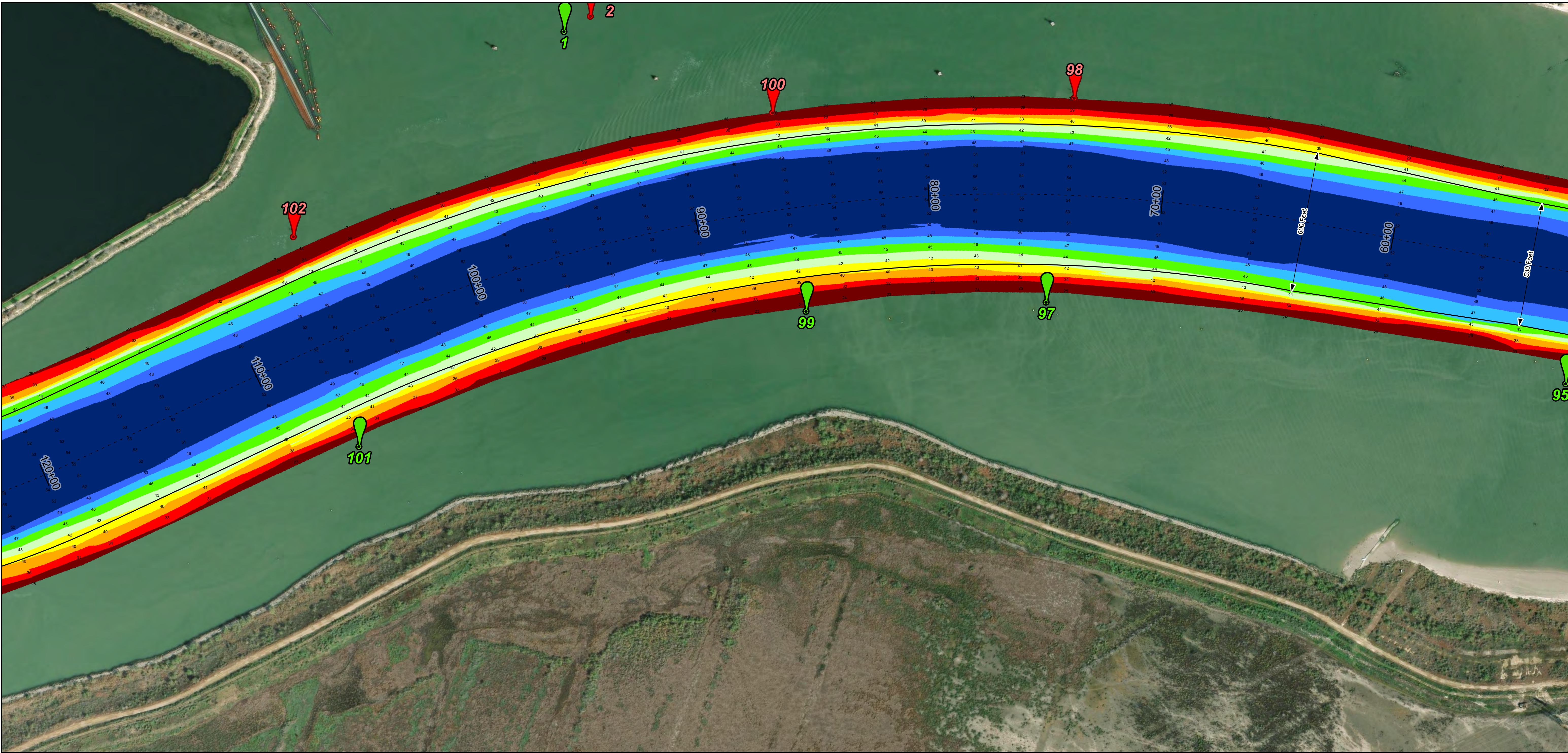
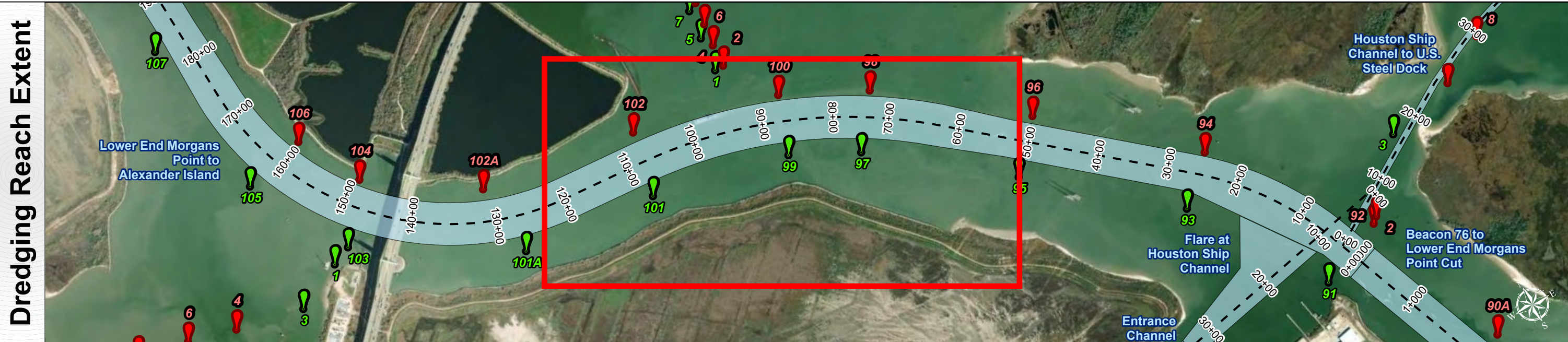
**HYDROGRAPHIC SURVEY**  
U.S. ARMY ENGINEER DISTRICT  
CORPS OF ENGINEERS  
GALVESTON, TEXAS

**Station: 0+000 to 295+00**  
**HOUSTON**  
Lower End Morgans Point to Alexander Island

# Houston Ship Channel: Lower End Morgans Point to Alexander Island



U.S. Army Corps of Engineers  
Galveston District



**Channel Features**

- Channel Center Line
- Channel Toe
- Channel Dimensions

**Aids to Navigation**

- Green Side Aids
- Red Side Aids
- Lights

**MLLW**

**NOTES:**

- Horizontal coordinates are referenced to Texas State Plane Coordinate System, South Central Zone NAD83 US Survey Feet.
- Elevations are referenced to Mean Lower Low Water (MLLW) datum.
- This project was designed by the Galveston District of the U.S. Army Corps of Engineers. The initials and signatures and registration designations of individuals appear on these project documents within the scope of their employment as required by 47CFR 110.1-41.12.
- The information depicted on this survey map represents the results of surveys made on the dates indicated and can only be considered as indicating the general conditions existing at that time. These conditions are subject to rapid change due to shoaling events. A prudent mariner should not rely exclusively on the information provided here. Required by 33 CFR 209.325
- For the most up to date information please check our website at: <http://www.usace.army.mil/Missions/Navigation/HydrographicSurveys/>

Service Layer Credits: World Topographic Map: City of Houston, HPB, Texas Parks & Wildlife, Esri, HERE, Garmin, INCREMENT P, USGS, METINASA, NGA, EPA, USDA  
World Imagery: Maxar  
World Ocean Base: Esri, GEBCO, Garmin, NaturalVue

**Additional Combined Survey Dates and Stationing:**

Combined survey dates 20250527\_PR\_150P00\_195P00; 20250529\_PR\_00P00\_150P00; 20250618\_PR\_10P00\_25P00

Coordinate System: NAD 1983 StatePlane Texas South Central FIPS 4204 Feet  
Projection: Lambert Conformal Conic

**Dredging Reach Extent**

**Hydrographic Survey Extent**

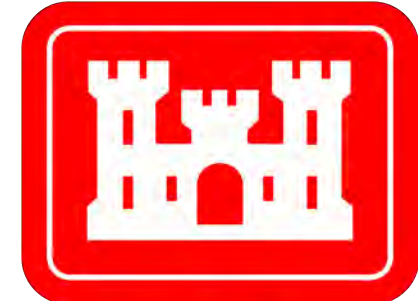
Latest Survey Collection Date: 18 June 2025	Authorized Depth: -46.5ft.
	Width Range: 530ft to 600ft
Document Page: 2 of 5	Side Slope Ratio: 1:2.5 (Rise : Run)
Website Index Number: 26	PDF Print Date: 7/2/2025
Scale: 1:2,500	
Mapped by: M3AOXPAC	
Additional Imagery info:	



**HYDROGRAPHIC SURVEY**  
U.S. ARMY ENGINEER DISTRICT  
CORPS OF ENGINEERS  
GALVESTON, TEXAS

**Station: 0+000 to 295+00**  
**HOUSTON**  
Lower End Morgans Point to Alexander Island

# Houston Ship Channel: Lower End Morgans Point to Alexander Island



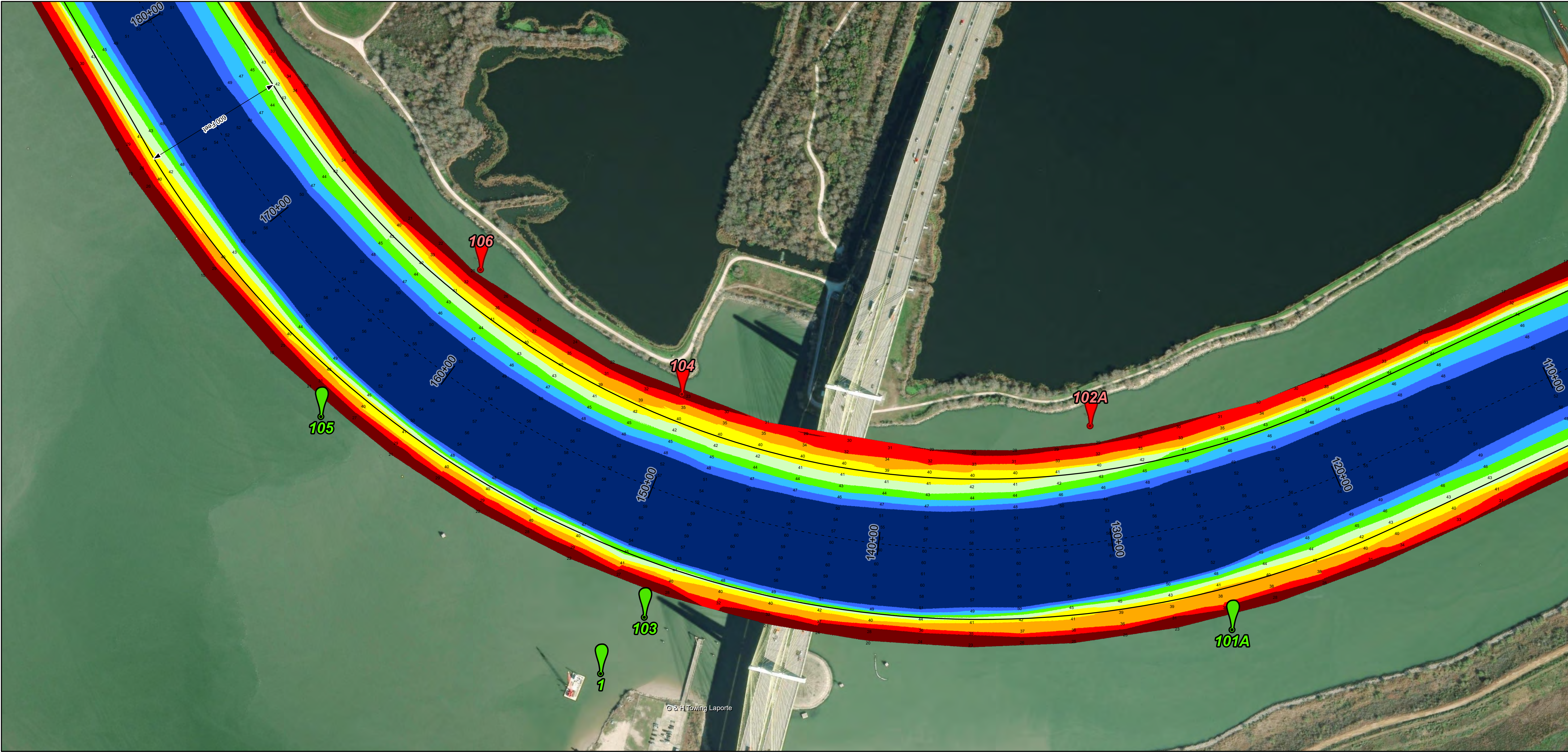
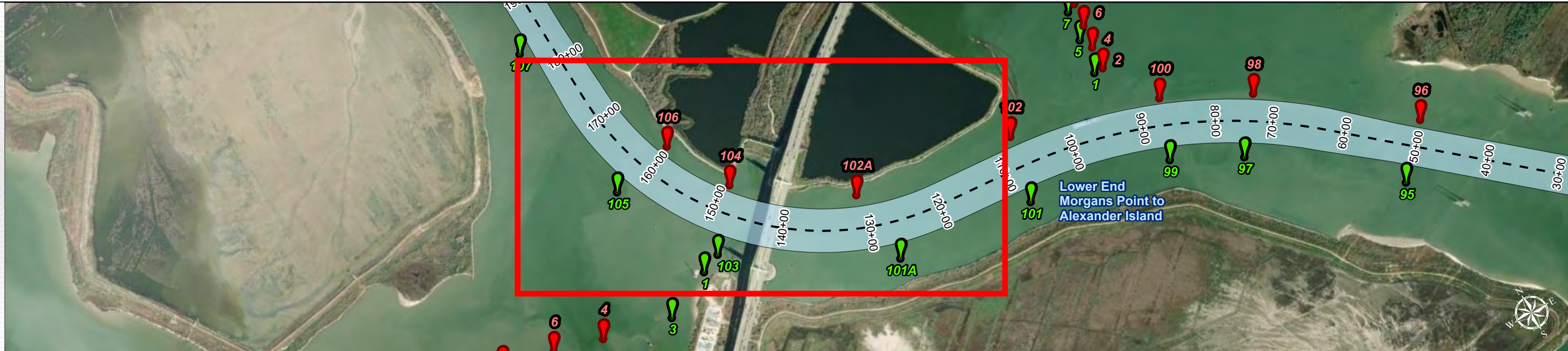
U.S. Army Corps of Engineers  
Galveston District



Regional Extent



Dredging Reach Extent



## Channel Features

- Channel Center Line
- Channel Toe
- Channel Dimensions

## Aids to Navigation

- Green Side Aids
- Red Side Aids
- Lights

## MLLW



## NOTES:

- Horizontal coordinates are referenced to Texas State Plane Coordinate System, South Central Zone NAD83 US Survey Feet.
  - Elevations are referenced to Mean Lower Low Water (MLLW) datum.
  - This project was designed by the Galveston District of the U.S. Army Corps of Engineers. The initials and signatures and registration designations of individuals appear on these project documents within the scope of their employment as required by 47CFR 110.1-41.02.
  - The information depicted on this survey map represents the results of surveys made on the dates indicated and can only be considered as indicating the general conditions existing at that time. These conditions are subject to rapid change due to shoaling events. A prudent mariner should not rely exclusively on the information provided here. Required by 33 CFR 209.325.
  - For the most up to date information please check our website at: <http://www.saw.usace.army.mil/Missions/Navigation/HydrographicSurveys/>
- Service Layer Credits: World Topographic Map: City of Houston, HPB, Texas Parks & Wildlife, Esri, HERE, Garmin, INCREMENT P, USGS, METINASA, NGA, EPA, USDA  
World Imagery: Maxar  
World Ocean Base: Esri, GEBCO, Garmin, NaturalVue

## Additional Combined Survey Dates and Stationing:

Combined survey dates 20250527\_PR\_150P00\_195P00; 20250529\_PR\_00P00\_150P00;  
20250618\_PR\_10P00\_25P00

Coordinate System: NAD 1983 StatePlane Texas South Central FIPS 4204 Feet  
Projection: Lambert Conformal Conic

Dredging Reach Extent  
0 0.25 0.5 1 Miles

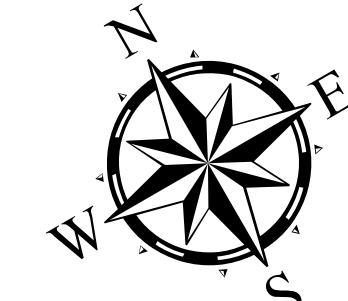
Hydrographic Survey Extent  
0 215 430 860 Feet

## HYDROGRAPHIC SURVEY

U.S. ARMY ENGINEER DISTRICT  
CORPS OF ENGINEERS  
GALVESTON, TEXAS

Station: 0+000 to 295+00

HOUSTON  
Lower End Morgans Point to Alexander Island



Latest Survey Collection Date: 18 June 2025

Document Page: 3 of 5

Website Index Number: 27

Scale: 1:2,500

Mapped by: M3AOXPAC

Additional Imagery info:

Authorized Depth: -46.5ft.

Width Range: 530ft to 600ft

Side Slope Ratio: 1:2.5 (Rise : Run)

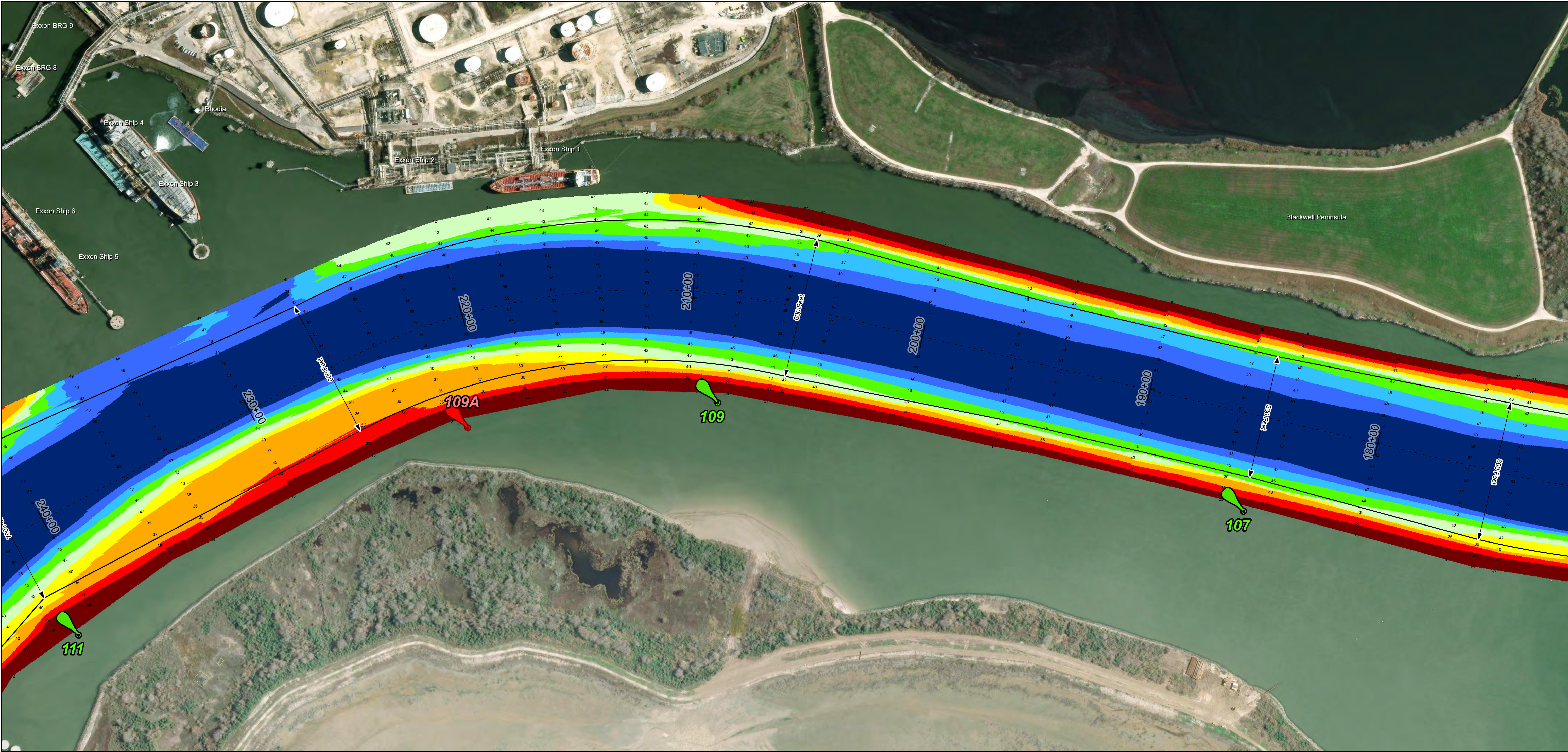
PDF Print Date: 7/2/2025

# Houston Ship Channel: Lower End Morgans Point to Alexander Island



U.S. Army Corps of Engineers  
Galveston District






**Channel Features**

- Channel Center Line
- Channel Toe
- Channel Dimensions

**Aids to Navigation**

- Green Side Aids
- Red Side Aids
- Lights

**MLLW**



**NOTES:**

- Horizontal coordinates are referenced to Texas State Plane Coordinate System, South Central Zone NAD83 US Survey Feet.
- Elevations are referenced to Mean Lower Low Water (MLLW) datum.
- This project was designed by the Galveston District of the U.S. Army Corps of Engineers. The initials and signatures and registration designations of individuals appear on these project documents within the scope of their employment as required by 47CFR 110.1-4102.
- The information depicted on this survey map represents the results of surveys made on the dates indicated and can only be considered as indicating the general conditions existing at that time. These conditions are subject to rapid change due to shoaling events. A prudent mariner should not rely exclusively on the information provided here. Required by 33 CFR 209.325
- For the most up to date information please check our website at: <http://www.swg.usace.army.mil/Missions/Navigation/HydrographicSurveys/>

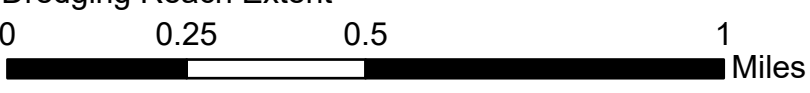
Service Layer Credits: World Topographic Map: City of Houston, HPB, Texas Parks & Wildlife, Esri, HERE, Garmin, INCREMENT P, USGS, METI/NASA, NGA, EPA, USDA  
World Imagery: Maxar  
World Ocean Base: Esri, GEBCO, Garmin, NaturalVue

**Additional Combined Survey Dates and Stationing:**


Combined survey dates 20250527\_PR\_150P00\_195P00; 20250529\_PR\_00P00\_150P00; 20250618\_PR\_10P00\_25P00

**Coordinate System:** NAD 1983 StatePlane Texas South Central FIPS 4204 Feet  
Projection: Lambert Conformal Conic

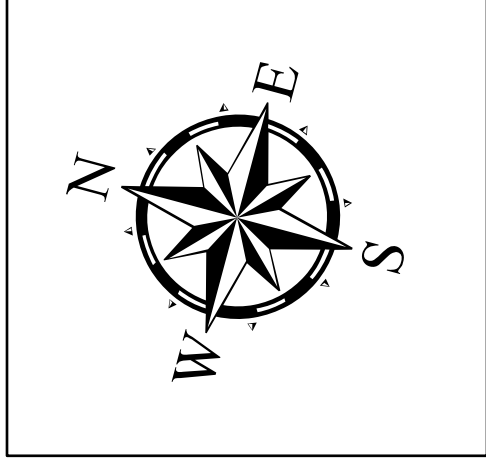
**Dredging Reach Extent**



**Hydrographic Survey Extent**



Latest Survey Collection Date: 18 June 2025		Authorized Depth: -46.5ft.
Document Page: 4 of 5	Website Index Number: 28	Width Range: 530ft to 600ft
Scale: 1:2,500		Side Slope Ratio: 1:2.5 (Rise : Run)
Mapped by: M3AOXPAC		PDF Print Date: 7/2/2025
Additional Imagery info:		



**HYDROGRAPHIC SURVEY**  
U.S. ARMY ENGINEER DISTRICT  
CORPS OF ENGINEERS  
GALVESTON, TEXAS

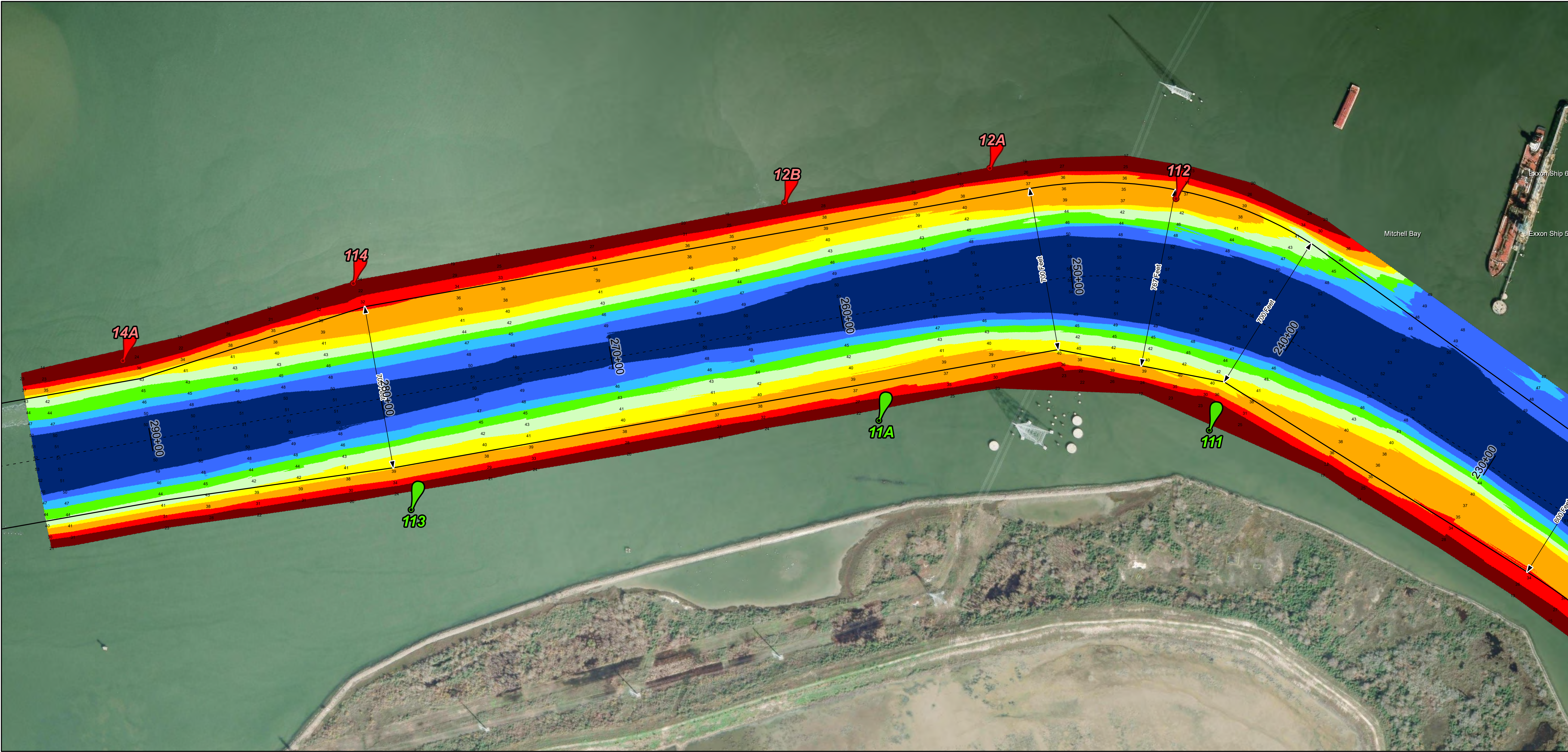
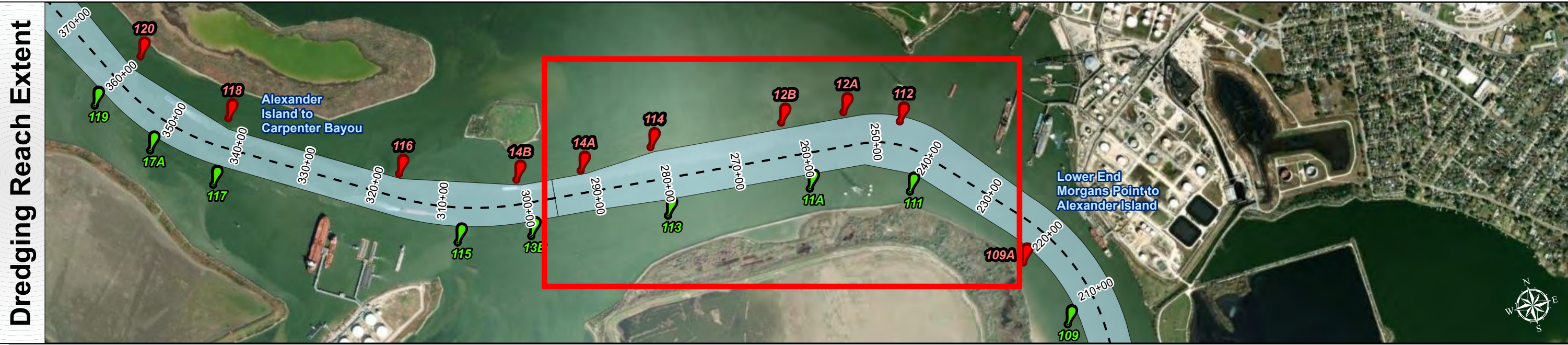
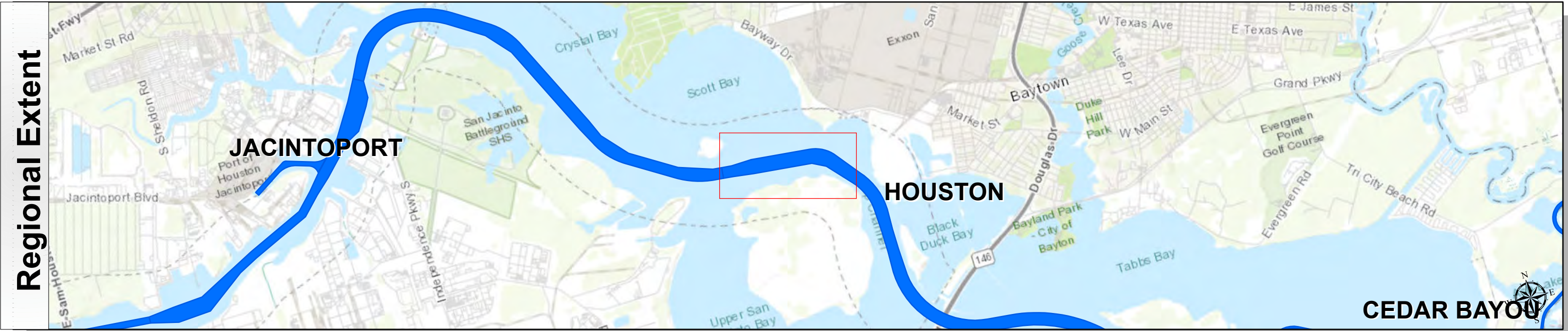
**Station: 0+000 to 295+00**  
**HOUSTON**  
Lower End Morgans Point to Alexander Island

# Houston Ship Channel: Lower End Morgans Point to Alexander Island



U.S. Army Corps of Engineers  
Galveston District





**Channel Features**

- Channel Center Line
- Channel Toe
- Channel Dimensions

**Aids to Navigation**

- Green Side Aids
- Red Side Aids
- Lights

**MLLW**

≤ 30 30 - 35 35 - 40 40 - 42 42 - 44 44 - 46 46 - 48 48 - 50 > 50

NOTES:  
1. Horizontal coordinates are referenced to Texas State Plane Coordinate System, South Central Zone NAD83 US Survey Feet.  
2. Elevations are referenced to Mean Lower Low Water (MLLW) datum.  
3. This project was designed by the Galveston District of the U.S. Army Corps of Engineers. The initials and signatures and registration designations of individuals appear on these project documents within the scope of their employment as required by 47CFR 110.1-41.02.  
4. The information depicted on this survey map represents the results of surveys made on the dates indicated and can only be considered as indicating the general conditions existing at that time. These conditions are subject to rapid change due to shoaling events. A prudent mariner should not rely exclusively on the information provided here. Required by 33 CFR 209.325.  
5. For the most up to date information please check our website at: <http://www.ssg.usace.army.mil/Missions/Navigation/HydrographicSurveys/>  
Service Layer Credits: World Topographic Map: City of Houston, HPB, Texas Parks & Wildlife, Esri, HERE, Garmin, INCREMENT P, USGS, METINASA, NGA, EPA, USDA, World Imagery: Maxar, World Ocean Base: Esri, GEBCO, Garmin, NaturalVue

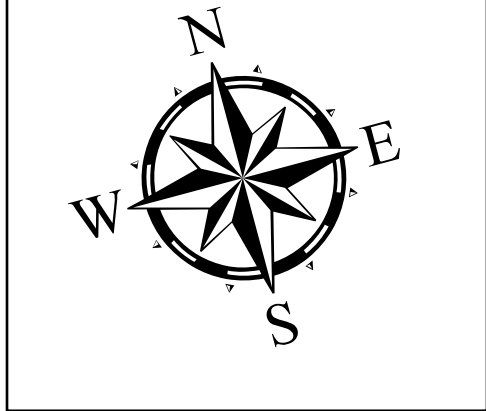
Additional Combined Survey Dates and Stationing:  
Combined survey dates 20250527\_PR\_150P00\_195P00; 20250529\_PR\_00P00\_150P00;  
20250618\_PR\_10P00\_25P00

Coordinate System: NAD 1983 StatePlane Texas South Central FIPS 4204 Feet  
Projection: Lambert Conformal Conic

Dredging Reach Extent  
0 0.25 0.5 1 Miles

Hydrographic Survey Extent  
0 215 430 860 Feet

Latest Survey Collection Date: 18 June 2025		Authorized Depth: -46.5ft.
Document Page: 5 of 5	Website Index Number: 29	Width Range: 530ft to 600ft
Scale: 1:2,500		Side Slope Ratio: 1:2.5 (Rise : Run)
Mapped by: M3AOXPAC		PDF Print Date: 7/2/2025
Additional Imagery info:		



**HYDROGRAPHIC SURVEY**  
U.S. ARMY ENGINEER DISTRICT  
CORPS OF ENGINEERS  
GALVESTON, TEXAS

**Station: 0+000 to 295+00**  
**HOUSTON**  
Lower End Morgans Point to Alexander Island