

# Houston Ship Channel: Alexander Island to Carpenter Bayou



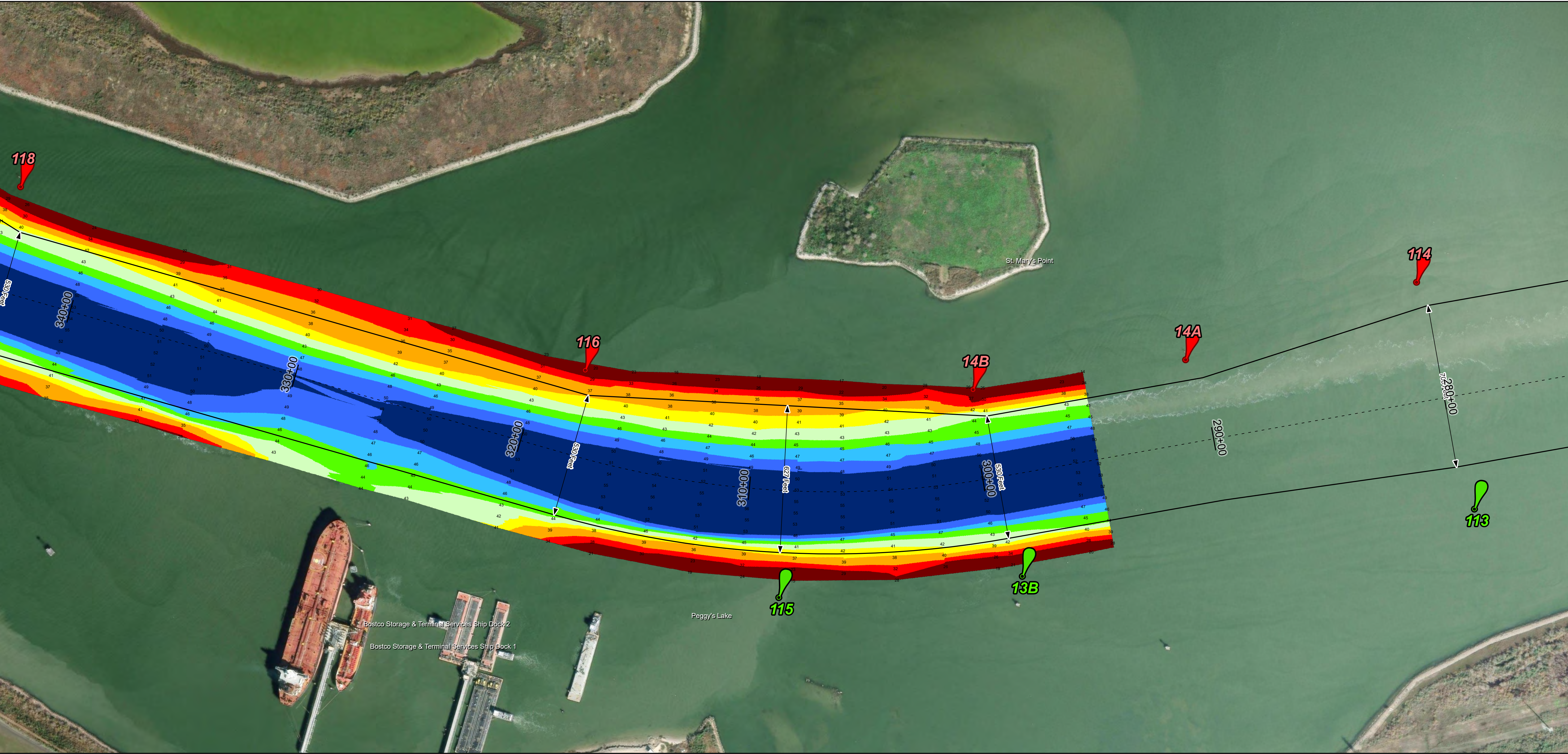
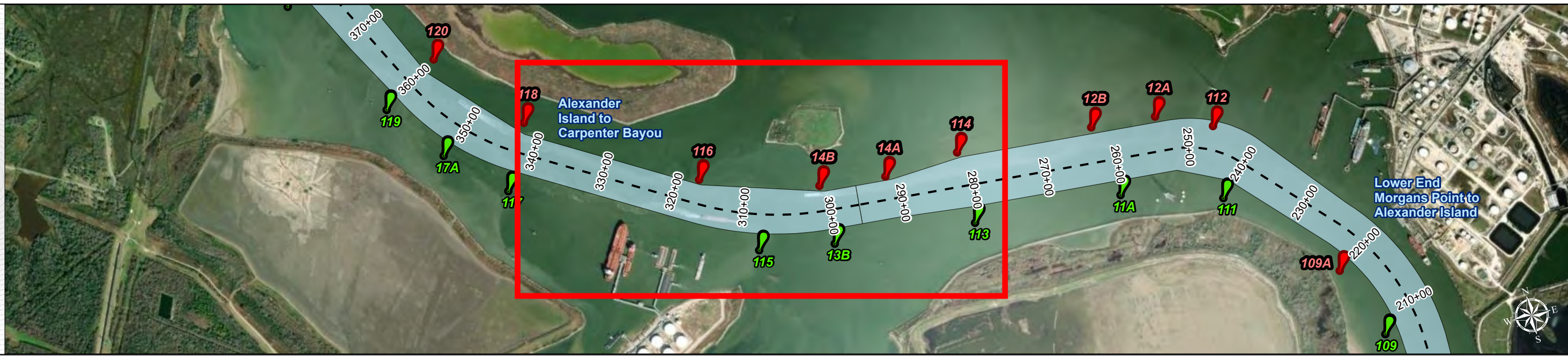
U.S. Army Corps of Engineers  
Galveston District



Regional Extent



Dredging Reach Extent



Channel Features

- Channel Center Line
- Channel Toe
- Channel Dimensions

Aids to Navigation

- Green Side Aids
- Red Side Aids
- Lights

MLLW

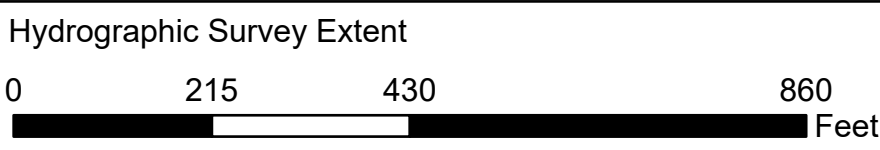
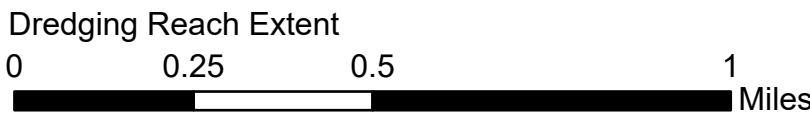


NOTES:  
1. Horizontal coordinates are referenced to Texas State Plane Coordinate System, South Central Zone NAD83 US Survey Feet.  
2. Elevations are referenced to Mean Lower Low Water (MLLW) datum.  
3. This project was designed by the Galveston District of the U.S. Army Corps of Engineers. The initials and signatures and registration designations of individuals appear on these project documents within the scope of their employment as required by 47CFR 117.1-41.12.  
4. The information depicted on this survey map represents the results of surveys made on the dates indicated and can only be considered as indicating the general conditions existing at that time. These conditions are subject to rapid change due to shoaling events. A prudent mariner should not rely exclusively on the information provided here. Required by 33 CFR 209.325  
5. For the most up to date information please check our website at: <http://www.svg.usace.army.mil/Missions/Navigation/HydrographicSurveys/>  
Service Layer Credits: World Imagery: Source: Esri, Maxar, Earthstar Geographics, and the GIS User Community  
World Topographic Map: City of Houston, HPB, Texas Parks & Wildlife, Esri, HERE, Garmin, INCREMENT P, USGS, METI/NASA, NGA, EPA, USDA  
World Ocean Base: Esri, GEBCO, Garmin, NaturalVue

Additional Combined Survey Dates and Stationing:

Combined survey dates 20250304\_PR\_295P00\_358P00; 20250306\_PR\_358P00\_484P00;  
20250307\_PR\_484P00\_520P00

Coordinate System: NAD 1983 StatePlane Texas South Central FIPS 4204 Feet  
Projection: Lambert Conformal Conic



**HYDROGRAPHIC SURVEY**

U.S. ARMY ENGINEER DISTRICT  
CORPS OF ENGINEERS  
GALVESTON, TEXAS

**Station: 295+00 to 520+00**  
**HOUSTON**  
Alexander Island to Carpenter Bayou

Latest Survey Collection Date: 07 March 2025

Document Page: 1 of 5

Scale: 1:2,500

Mapped by: M3AOXPAC

Additional Imagery info:

Authorized Depth: -46.5ft.

Width Range: 530ft to 705ft

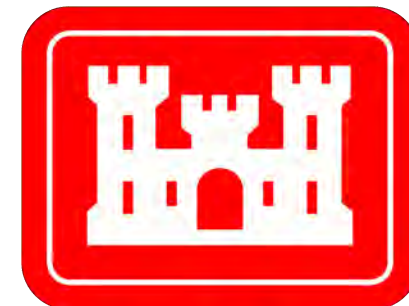
Side Slope Ratio: 1:2.5 (Rise : Run)

PDF Print Date: 4/4/2025

Website Index Number: 30



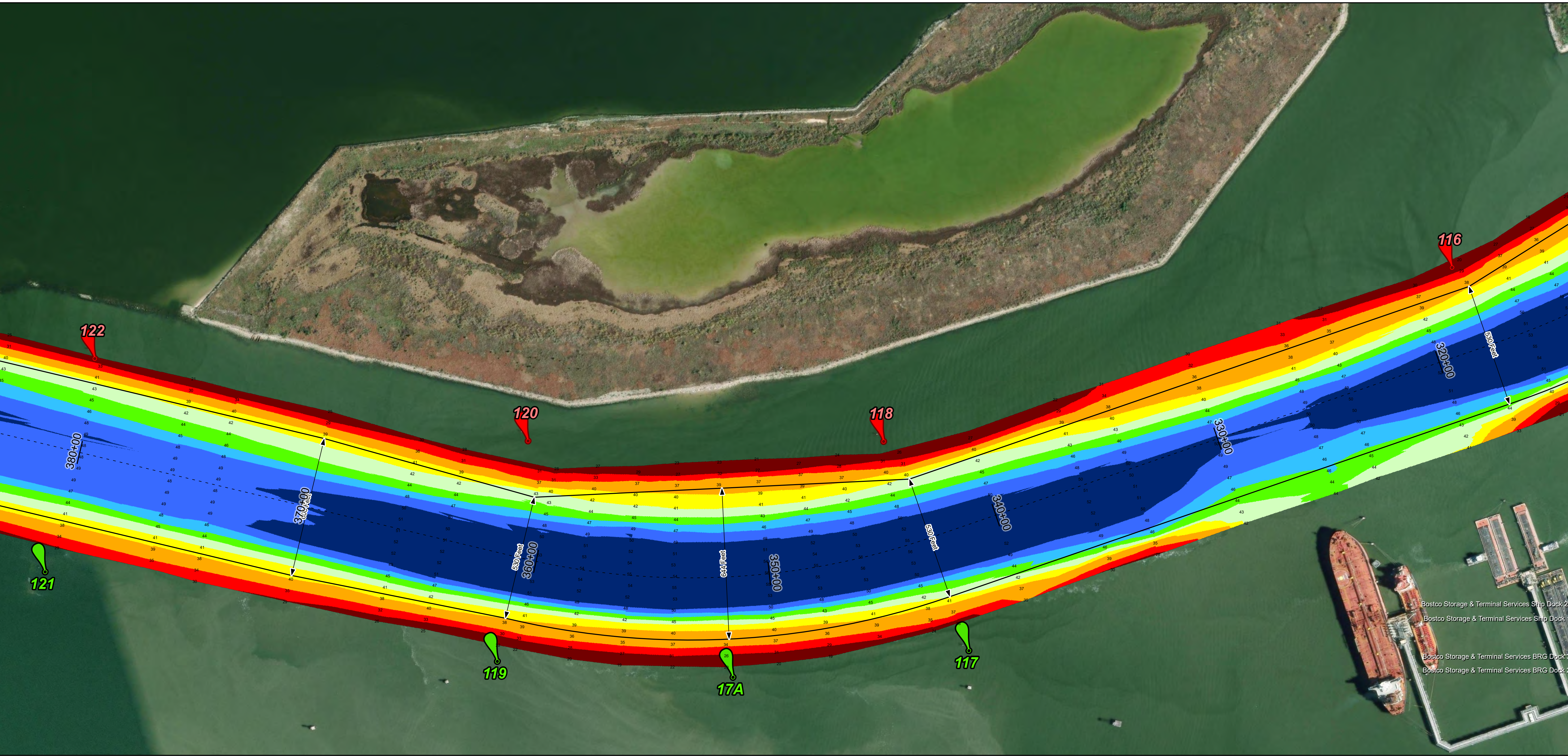
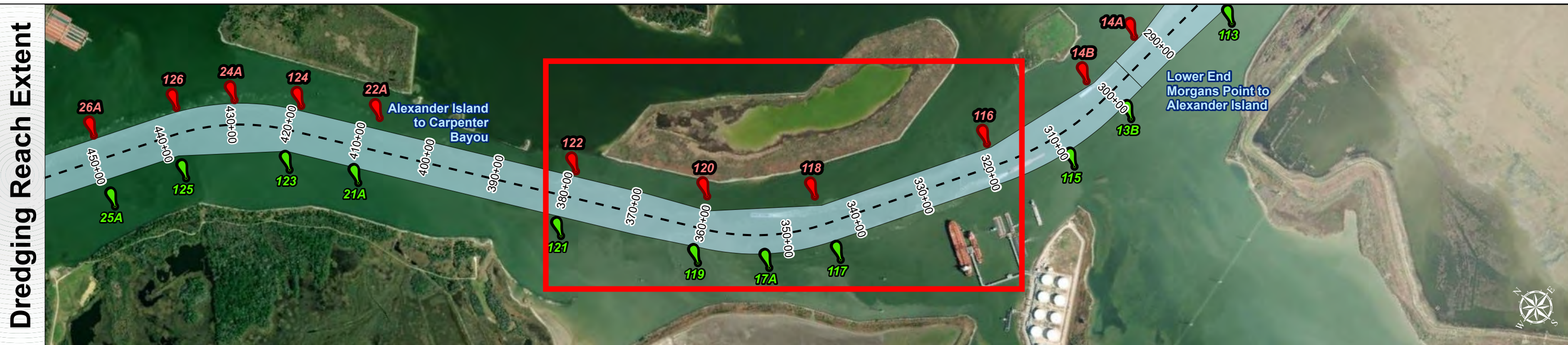
# Houston Ship Channel: Alexander Island to Carpenter Bayou



U.S. Army Corps of Engineers  
Galveston District



Regional Extent



Channel Features

- Channel Center Line
- Channel Toe
- Channel Dimensions

Aids to Navigation

- Green Side Aids
- Red Side Aids
- Lights

MLLW

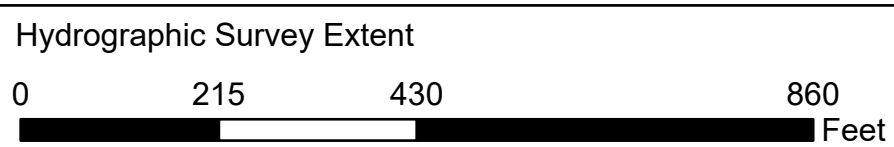


NOTES:  
1. Horizontal coordinates are referenced to Texas State Plane Coordinate System, South Central Zone NAD83 US Survey Feet.  
2. Elevations are referenced to Mean Lower Low Water (MLLW) datum.  
3. This project was designed by the Galveston District of the U.S. Army Corps of Engineers. The initials and signatures and registration designations of individuals appear on these project documents within the scope of their employment as required by 47CFR 110.1-41.02.  
4. The information depicted on this survey map represents the results of surveys made on the dates indicated and can only be considered as indicating the general conditions existing at that time. These conditions are subject to rapid change due to shoaling events. A prudent mariner should not rely exclusively on the information provided here. Required by 33 CFR 206.325.  
5. For the most up to date information please check our website at: <http://www.svg.usace.army.mil/Missions/Navigation/HydrographicSurveys/>  
Service Layer Credits: World Imagery: Source: Esri, Maxar, Earthstar Geographics, and the GIS User Community  
World Topographic Map: City of Houston, HPB, Texas Parks & Wildlife, Esri, HERE, Garmin, INCREMENT P, USGS, METI/NASA, NGA, EPA, USDA  
World Ocean Base: Esri, GEBCO, Garmin, NaturalVue

Additional Combined Survey Dates and Stationing:

Combined survey dates 20250304\_PR\_295P00\_358P00; 20250306\_PR\_358P00\_484P00;  
20250307\_PR\_484P00\_520P00

Coordinate System: NAD 1983 StatePlane Texas South Central FIPS 4204 Feet  
Projection: Lambert Conformal Conic



**HYDROGRAPHIC SURVEY**

U.S. ARMY ENGINEER DISTRICT  
CORPS OF ENGINEERS  
GALVESTON, TEXAS

**Station: 295+00 to 520+00**  
**HOUSTON**  
Alexander Island to Carpenter Bayou

Latest Survey Collection Date: 07 March 2025

Document Page: 2 of 5

Website Index Number: 31

Authorized Depth: -46.5ft.

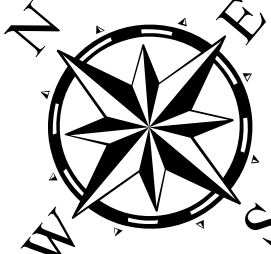
Width Range: 530ft to 705ft

Side Slope Ratio: 1:2.5 (Rise : Run)

PDF Print Date: 4/4/2025

Mapped by: M3AOXPAC

Additional Imagery info:

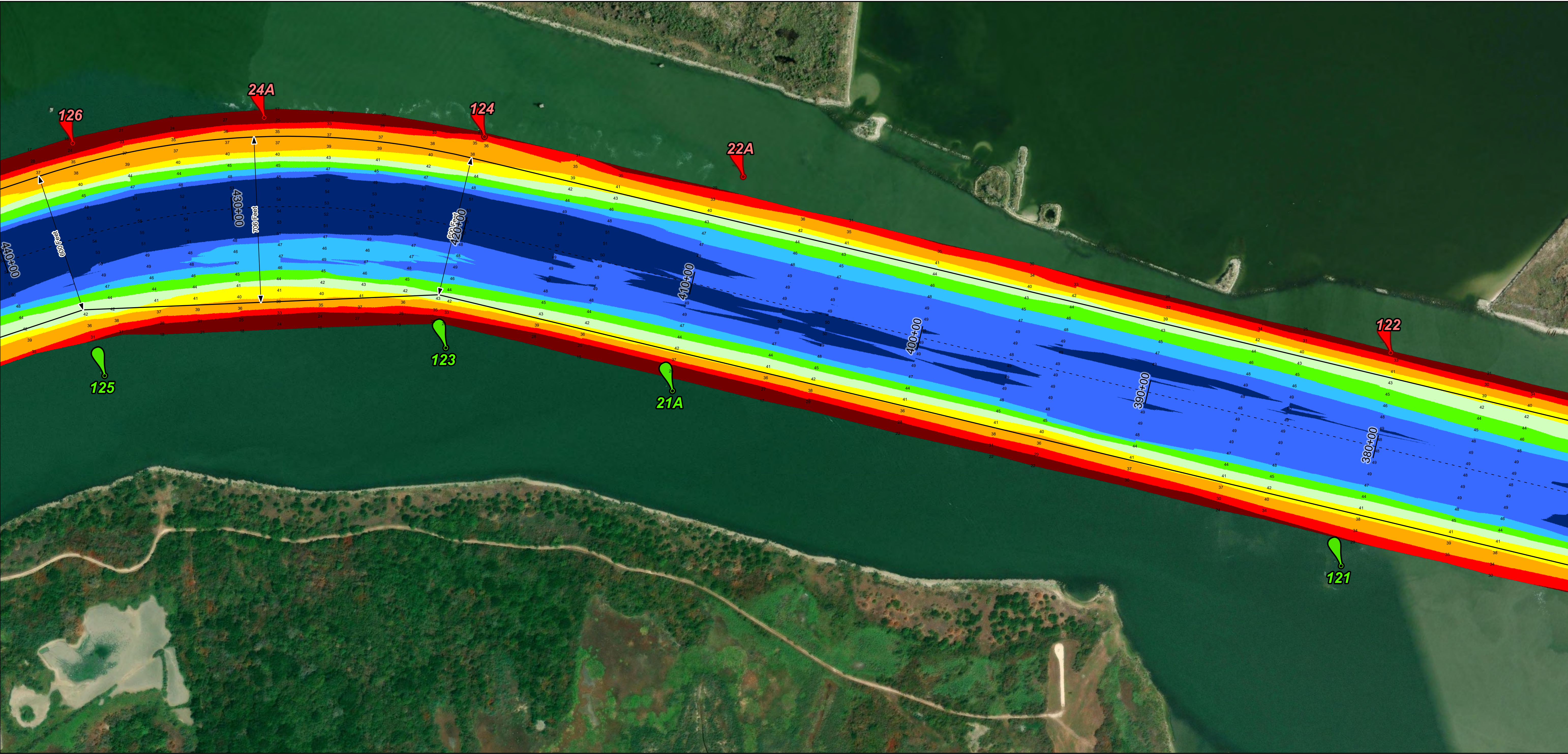
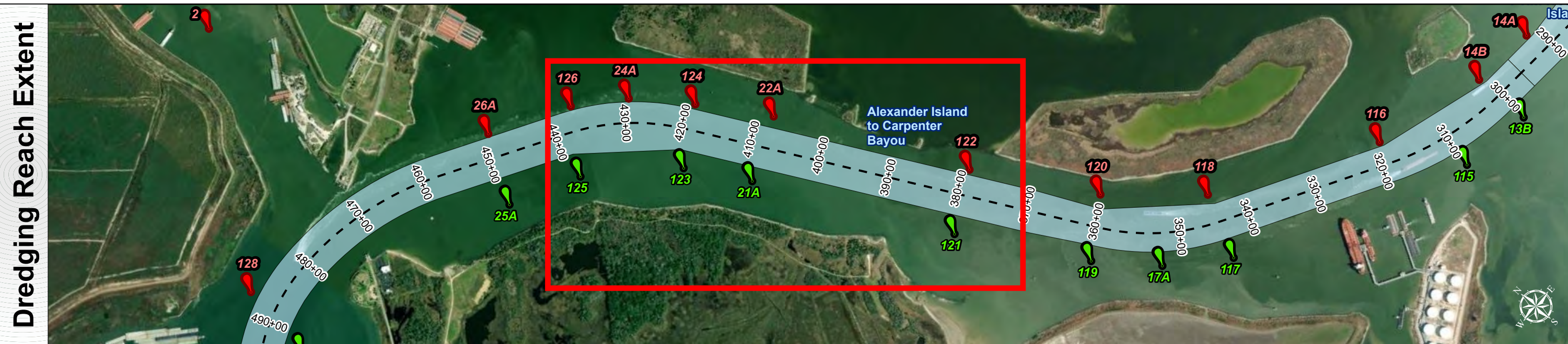




# Houston Ship Channel: Alexander Island to Carpenter Bayou



U.S. Army Corps of Engineers  
Galveston District



**Channel Features**

- Channel Center Line
- Channel Toe
- Channel Dimensions

**Aids to Navigation**

- Green Side Aids
- Red Side Aids
- Lights

**MLLW**

30 - 35 - 40 - 42 - 44 - 46 - 48 - 50

NOTES:  
1. Horizontal coordinates are referenced to Texas State Plane Coordinate System, South Central Zone NAD83 US Survey Feet.  
2. Elevations are referenced to Mean Lower Low Water (MLLW) datum.  
3. This project was designed by the Galveston District of the U.S. Army Corps of Engineers. The initials and signatures and registration designations of individuals appear on these project documents within the scope of their employment as required by 47CFR 117.1-41.12.  
4. The information depicted on this survey map represents the results of surveys made on the dates indicated and can only be considered as indicating the general conditions existing at that time. These conditions are subject to rapid change due to shoaling events. A prudent mariner should not rely exclusively on the information provided here. Required by 33 CFR 209.325.  
5. For the most up to date information please check our website at: <http://www.svg.usace.army.mil/Missions/Navigation/HydrographicSurveys/>

Service Layer Credits: World Imagery: Source: Esri, Maxar, Earthstar Geographics, and the GIS User Community  
World Topographic Map: City of Houston, HPB, Texas Parks & Wildlife, Esri, HERE, Garmin, INCREMENT P, USGS, METI/NASA, NGA, EPA, USDA  
World Ocean Base: Esri, GEBCO, Garmin, NaturalVue

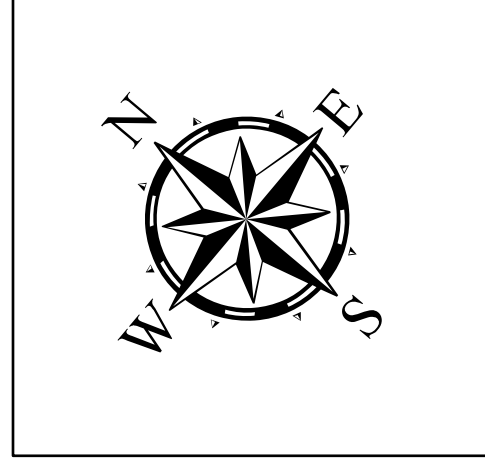
Additional Combined Survey Dates and Stationing:  
Combined survey dates 20250304\_PR\_295P00\_358P00; 20250306\_PR\_358P00\_484P00; 20250307\_PR\_484P00\_520P00

Coordinate System: NAD 1983 StatePlane Texas South Central FIPS 4204 Feet  
Projection: Lambert Conformal Conic

Dredging Reach Extent  
0 0.25 0.5 1 Miles

Hydrographic Survey Extent  
0 215 430 860 Feet

Latest Survey Collection Date: 07 March 2025	Authorized Depth: -46.5ft.
Document Page: 3 of 5	Width Range: 530ft to 705ft
Scale: 1:2,500	Side Slope Ratio: 1:2.5 (Rise : Run)
Mapped by: M3AOXPAC	PDF Print Date: 4/4/2025
Additional Imagery info:	

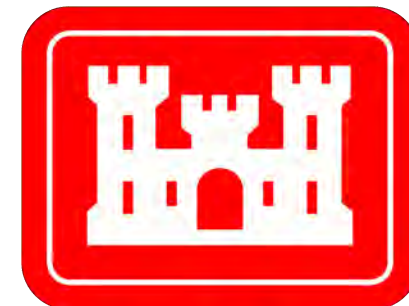


**HYDROGRAPHIC SURVEY**  
U.S. ARMY ENGINEER DISTRICT  
CORPS OF ENGINEERS  
GALVESTON, TEXAS

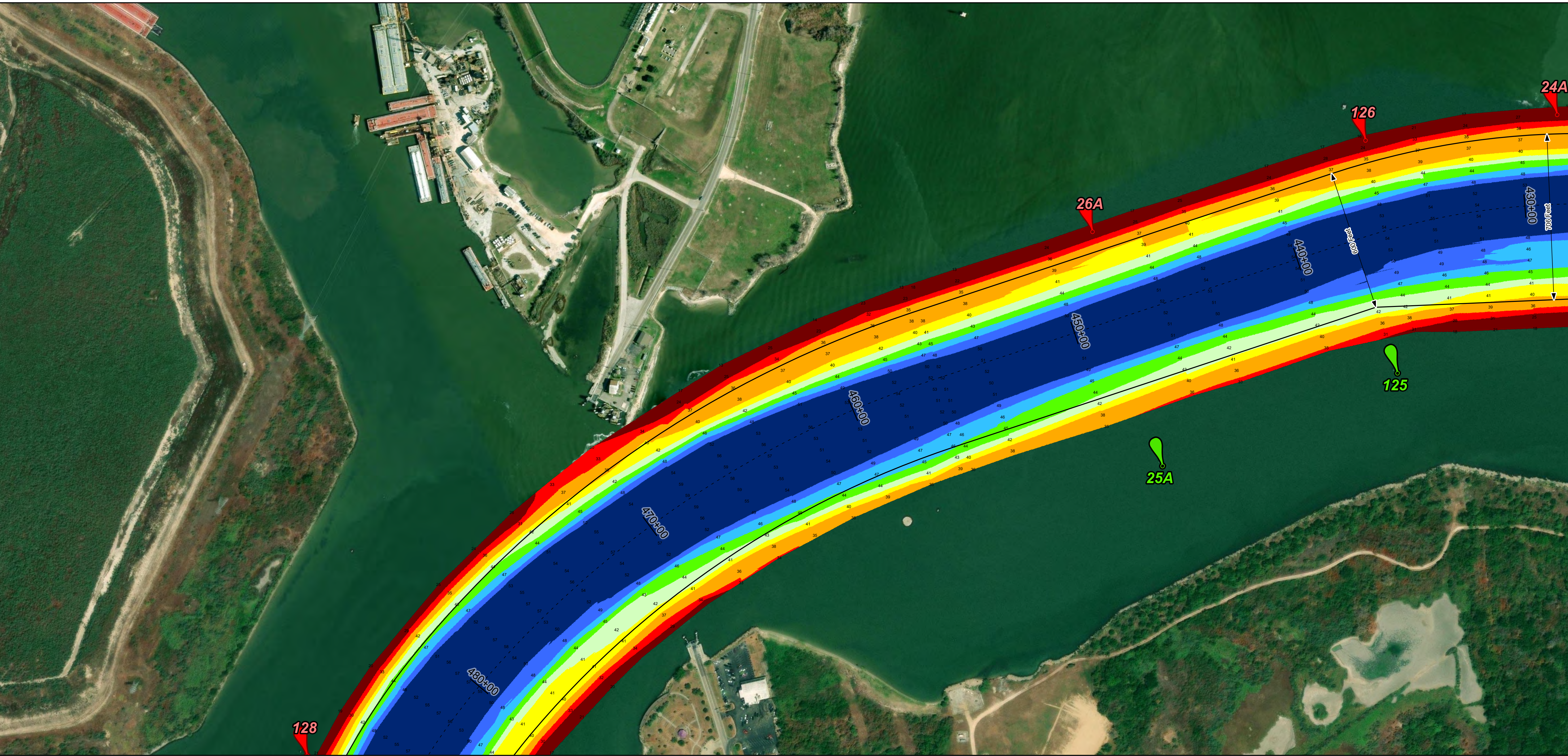
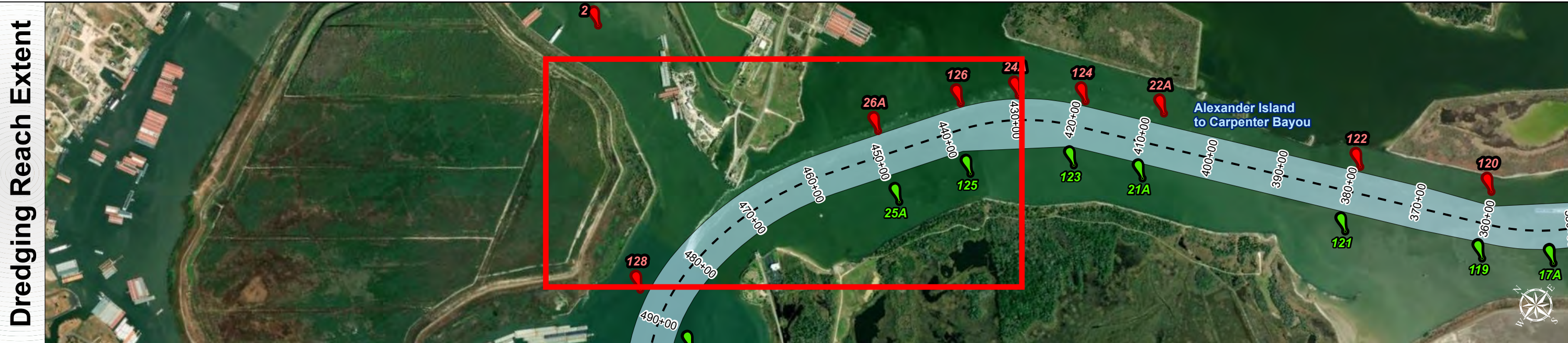
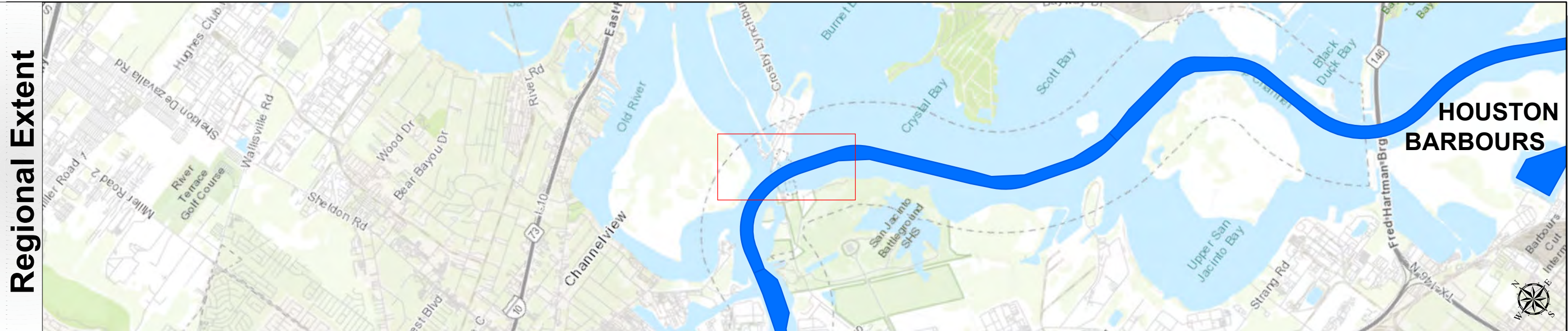
**Station: 295+00 to 520+00**  
HOUSTON  
Alexander Island to Carpenter Bayou



# Houston Ship Channel: Alexander Island to Carpenter Bayou



U.S. Army Corps of Engineers  
Galveston District



## Channel Features

- Channel Center Line
- Channel Toe
- Channel Dimensions

## Aids to Navigation

- Green Side Aids
- Red Side Aids
- Lights

## MLLW



## NOTES:

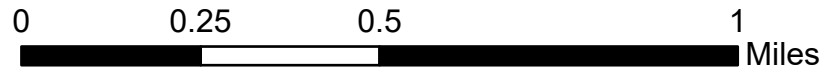
- Horizontal coordinates are referenced to Texas State Plane Coordinate System, South Central Zone NAD83 US Survey Feet.
  - Elevations are referenced to Mean Lower Low Water (MLLW) datum.
  - This project was designed by the Galveston District of the U.S. Army Corps of Engineers. The initials and signatures and registration designations of individuals appear on these project documents within the scope of their employment as required by 47CFR 110.1-41.02.
  - The information depicted on this survey map represents the results of surveys made on the dates indicated and can only be considered as indicating the general conditions existing at that time. These conditions are subject to rapid change due to shoaling events. A prudent mariner should not rely exclusively on the information provided here. Required by 33 CFR 209.325.
  - For the most up to date information please check our website at: <http://www.svg.usace.army.mil/Missions/Navigation/HydrographicSurveys/>
- Service Layer Credits: World Imagery: Source: Esri, Maxar, Earthstar Geographics, and the GIS User Community  
World Topographic Map: City of Houston, HPB, Texas Parks & Wildlife, Esri, HERE, Garmin, INCREMENT P, USGS, METINASA, NGA, EPA, USDA  
World Ocean Base: Esri, GEBCO, Garmin, NaturalVue

## Additional Combined Survey Dates and Stationing:

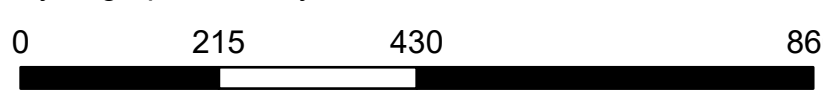
Combined survey dates 20250304\_PR\_295P00\_358P00; 20250306\_PR\_358P00\_484P00;  
20250307\_PR\_484P00\_520P00

Coordinate System: NAD 1983 StatePlane Texas South Central FIPS 4204 Feet  
Projection: Lambert Conformal Conic

Dredging Reach Extent



Hydrographic Survey Extent

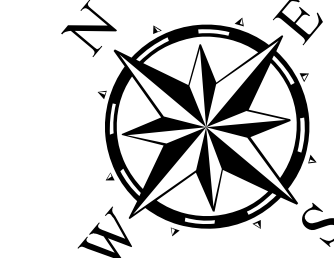


## HYDROGRAPHIC SURVEY

U.S. ARMY ENGINEER DISTRICT  
CORPS OF ENGINEERS  
GALVESTON, TEXAS

Station: 295+00 to 520+00

HOUSTON  
Alexander Island to Carpenter Bayou



Latest Survey Collection Date: 07 March 2025

Document Page: 4 of 5

Authorized Depth: -46.5ft.

Width Range: 530ft to 705ft

Side Slope Ratio: 1:2.5 (Rise : Run)

PDF Print Date: 4/4/2025

Website Index Number: 33

Scale: 1:2,500

Mapped by: M3AOXPAC

Additional Imagery info:



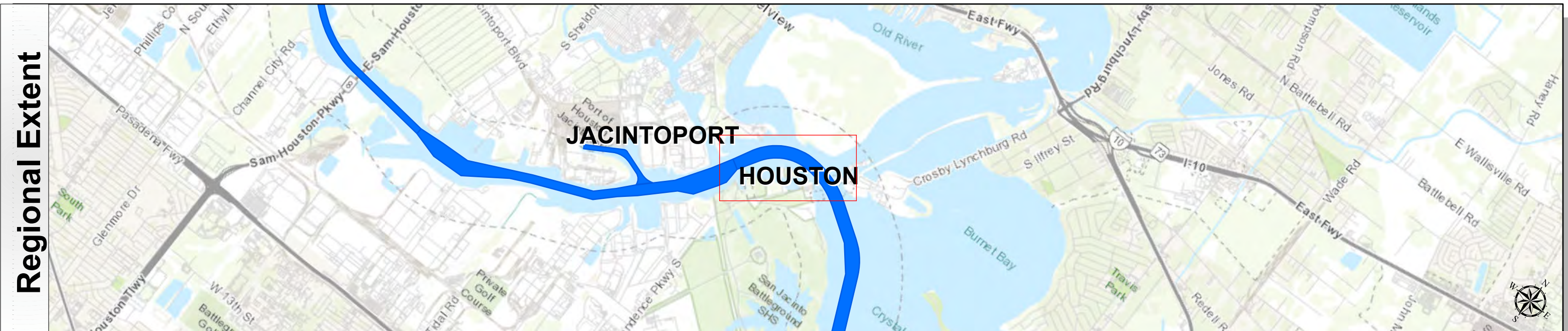
# Houston Ship Channel: Alexander Island to Carpenter Bayou



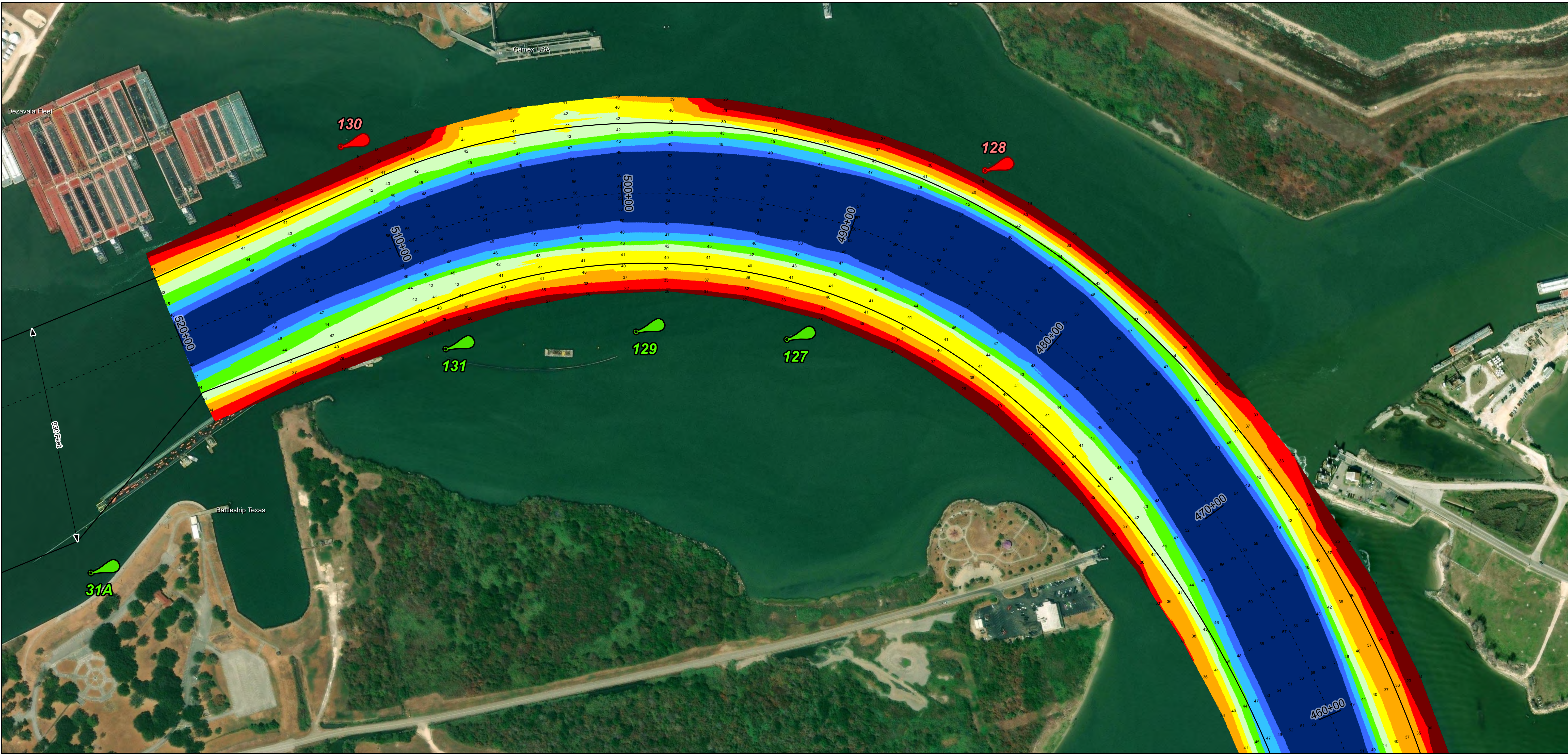
U.S. Army Corps of Engineers  
Galveston District



Regional Extent



Dredging Reach Extent



Channel Features

- Channel Center Line
- Channel Toe
- Channel Dimensions

Aids to Navigation

- Green Side Aids
- Red Side Aids
- Lights

MLLW



NOTES:  
1. Horizontal coordinates are referenced to Texas State Plane Coordinate System, South Central Zone NAD83 US Survey Feet.  
2. Elevations are referenced to Mean Lower Low Water (MLLW) datum.  
3. This project was designed by the Galveston District of the U.S. Army Corps of Engineers. The initials and signatures and registration designations of individuals appear on these project documents within the scope of their employment as required by 47CFR 110.1-41.12.  
4. The information depicted on this survey map represents the results of surveys made on the dates indicated and can only be considered as indicating the general conditions existing at that time. These conditions are subject to rapid change due to shoaling events. A prudent mariner should not rely exclusively on the information provided here. Required by 33 CFR 209.325.  
5. For the most up to date information please check our website at: <http://www.svg.usace.army.mil/Missions/Navigation/HydrographicSurveys/>  
Service Layer Credits: World Imagery: Source: Esri, Maxar, Earthstar Geographics, and the GIS User Community  
World Topographic Map: City of Houston, HPB, Texas Parks & Wildlife, Esri, HERE, Garmin, INCREMENT P, USGS, METI/NASA, NGA, EPA, USDA  
World Ocean Base: Esri, GEBCO, Garmin, NaturalVue

Additional Combined Survey Dates and Stationing:  
Combined survey dates 20250304\_PR\_295P00\_358P00; 20250306\_PR\_358P00\_484P00;  
20250307\_PR\_484P00\_520P00

Coordinate System: NAD 1983 StatePlane Texas South Central FIPS 4204 Feet  
Projection: Lambert Conformal Conic

Dredging Reach Extent  
0 0.25 0.5 1 Miles

Hydrographic Survey Extent  
0 215 430 860 Feet

HYDROGRAPHIC SURVEY

U.S. ARMY ENGINEER DISTRICT  
CORPS OF ENGINEERS  
GALVESTON, TEXAS

Station: 295+00 to 520+00  
HOUSTON  
Alexander Island to Carpenter Bayou

Latest Survey Collection Date: 07 March 2025

Document Page: 5 of 5

Scale: 1:2,500

Mapped by: M3AOXPAC

Additional Imagery info:

Authorized Depth: -46.5ft.

Width Range: 530ft to 705ft

Side Slope Ratio: 1:2.5 (Rise : Run)

PDF Print Date: 4/4/2025

Website Index Number: 34

Scale: 1:2,500

Mapped by: M3AOXPAC

Additional Imagery info: