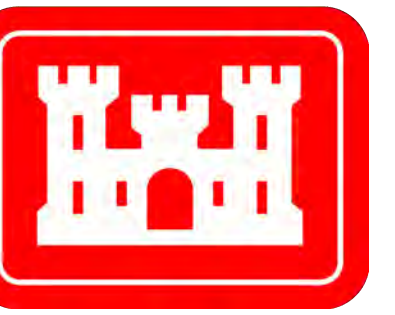
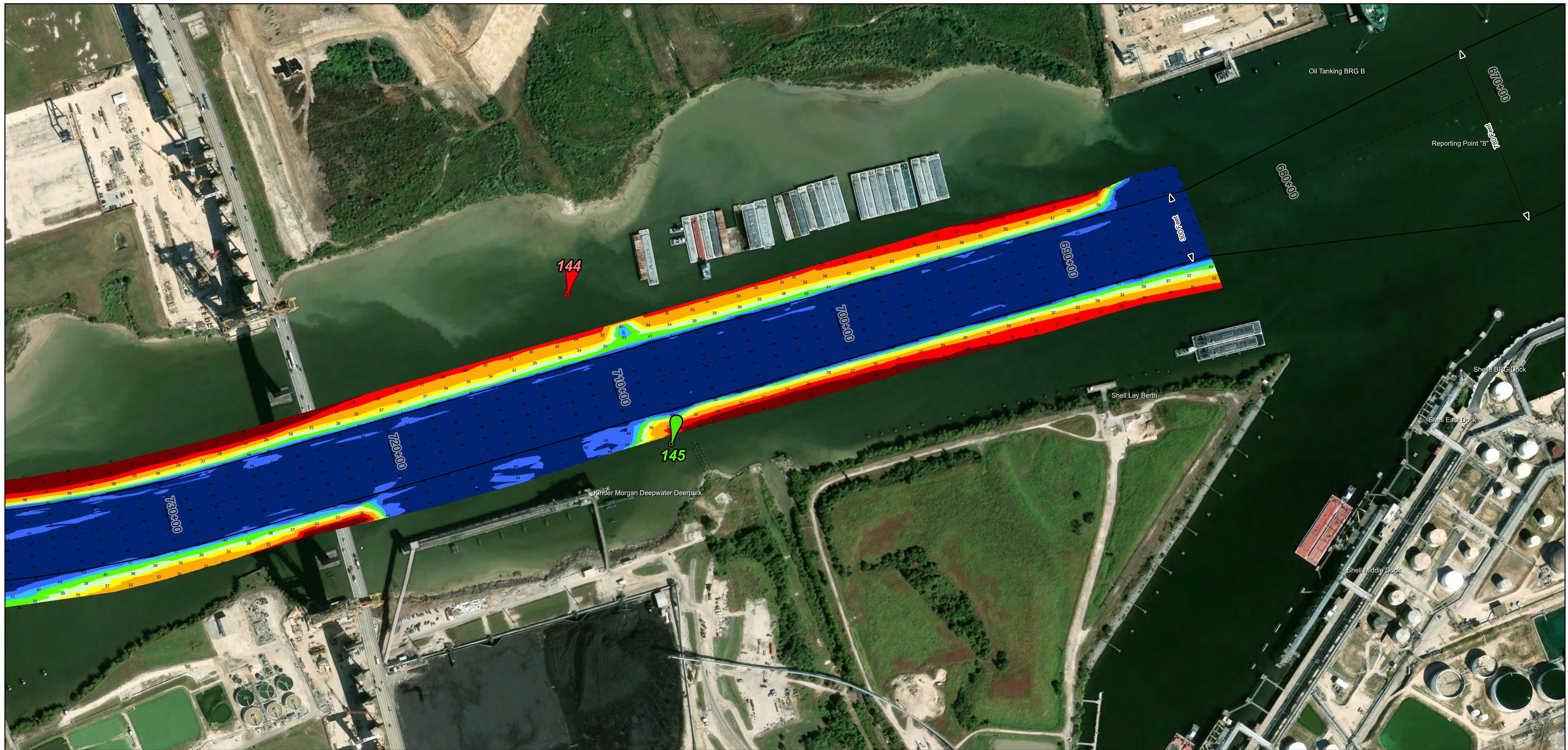
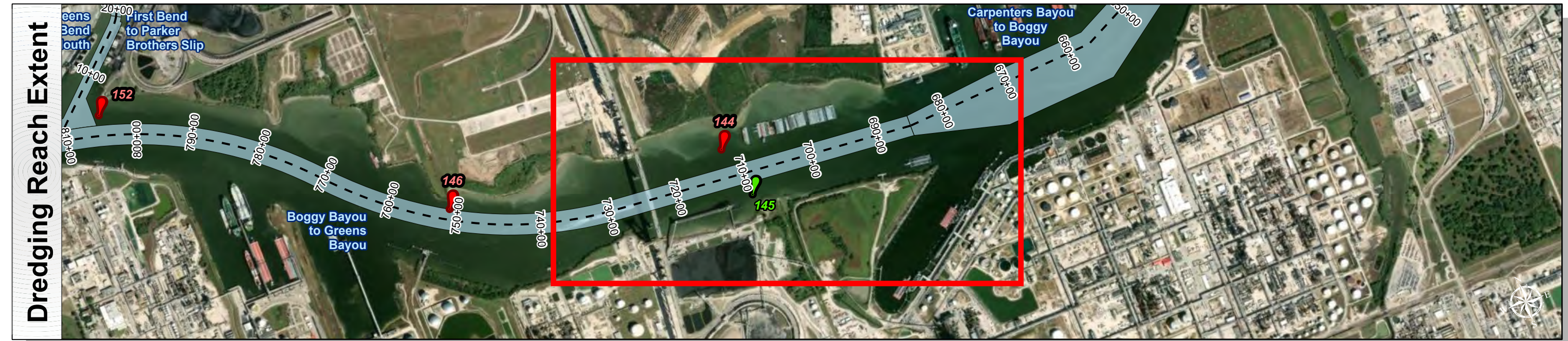
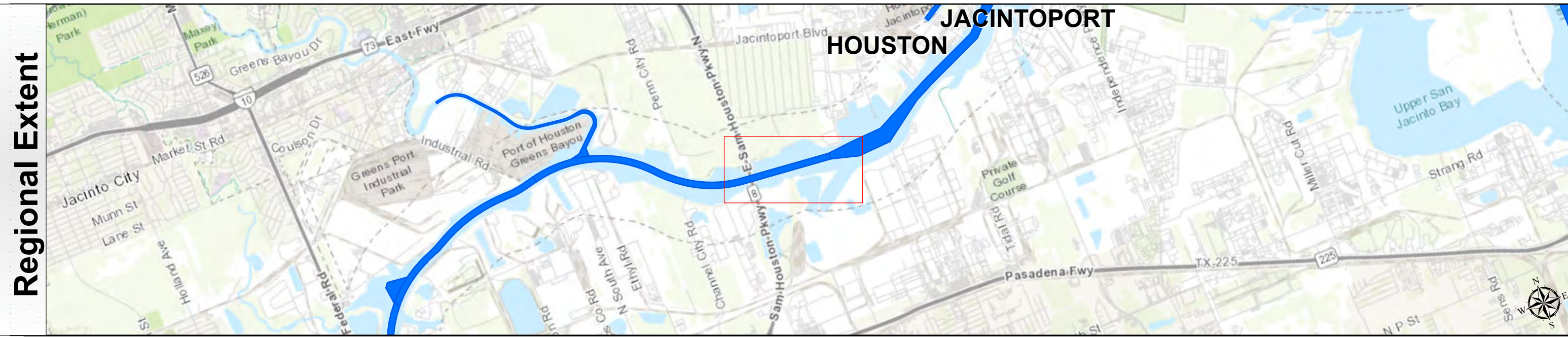


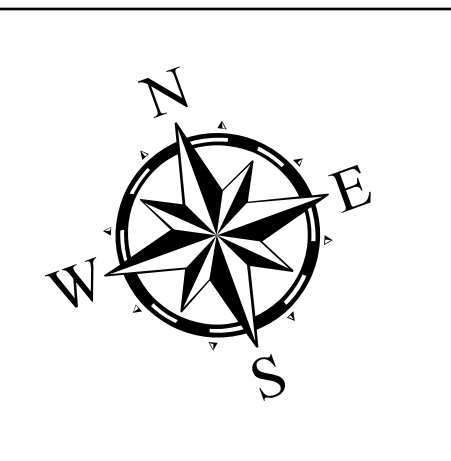
Houston Ship Channel: Boggy Bayou to Greens Bayou



U.S. Army Corps of Engineers
Galveston District



Latest Survey Collection Date: 23 April 2026	Authorized Depth: -41.5ft.
Document Page: 1 of 3	Width Range: 300ft to 300ft
Scale: 1:2,500	Side Slope Ratio: 1:2.5 (Rise : Run)
Mapped by: M3AOXPAC	PDF Print Date: 5/1/2026
Additional Imagery info:	



Channel Features

- Channel Center Line
- Channel Toe
- Channel Dimensions

Aids to Navigation

- Green Side Aids
- Red Side Aids
- Lights

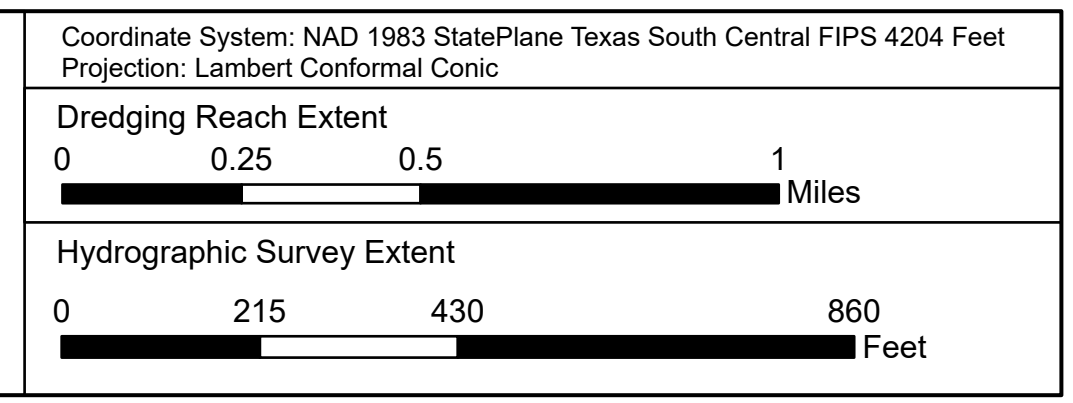
MLLW

NOTES:

- Horizontal coordinates are referenced to Texas State Plane Coordinate System, South Central Zone NAD83 US Survey Feet.
- Elevations are referenced to Mean Lower Low Water (MLLW) datum.
- This project was designed by the Galveston District of the U.S. Army Corps of Engineers. The initials and signatures and registration designations of individuals appear on these project documents within the scope of their employment as required by 47CFR 117.11-1, §117.12.
- The information depicted on this survey map represents the results of surveys made on the dates indicated and can only be considered as indicating the general conditions existing at that time. These conditions are subject to rapid change due to shoaling events. A prudent mariner should not rely exclusively on the information provided here. Required by 33 CFR 209.225
- For the most up to date information please check our website at: <http://www.usace.army.mil/Missions/Navigation/HydrographicSurveys/>

Service Layer Credits: World Topographic Map: City of Houston, HPB, Texas Parks & Wildlife, Esri, HERE, Garmin, INCREMENT P, USGS, METINASA, NGA, EPA, USDA
World Imagery: Vector
World Ocean Base: Esri, GEBCO, Garmin, NaturalVue

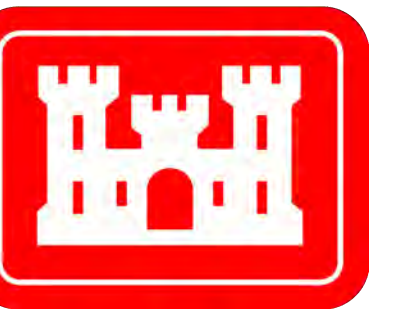
Additional Combined Survey Dates and Stationing:
 Combined survey dates 20260416_AD_19_727P96_771P55; 20260416_AD_18_684P03_727P96;
 20260423_AD_20_771P55_833P05



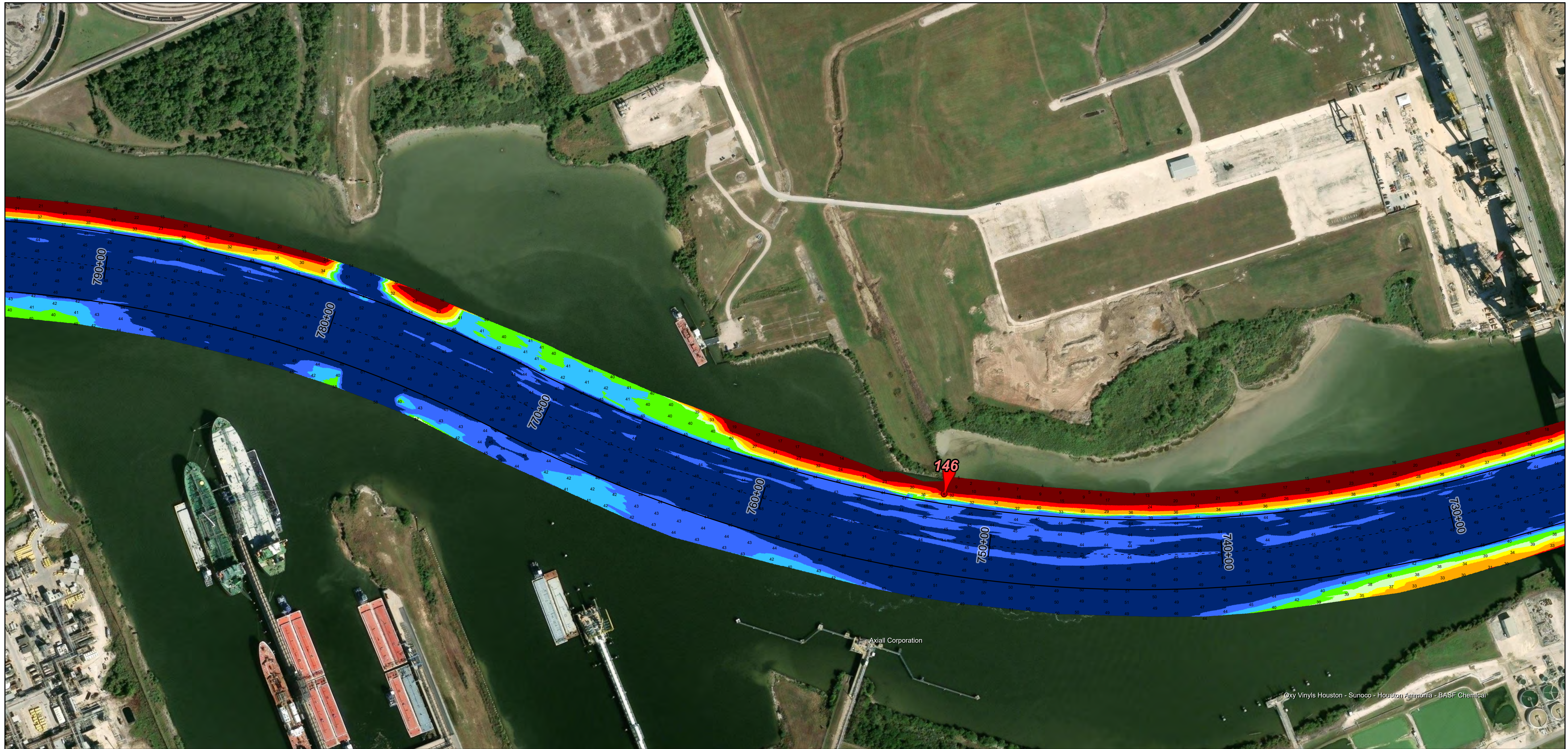
HYDROGRAPHIC SURVEY
 U.S. ARMY ENGINEER DISTRICT
 CORPS OF ENGINEERS
 GALVESTON, TEXAS

Station: 684+03.19 to 833+05.17
HOUSTON
 Boggy Bayou to Greens Bayou

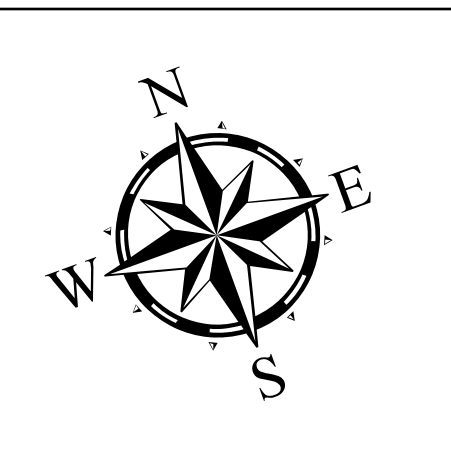
Houston Ship Channel: Boggy Bayou to Greens Bayou



U.S. Army Corps of Engineers
Galveston District



Latest Survey Collection Date: 23 April 2026	Authorized Depth: -41.5ft.
Document Page: 2 of 3	Width Range: 300ft to 300ft
Scale: 1:2,500	Side Slope Ratio: 1:2.5 (Rise : Run)
Mapped by: M3AOXPAC	PDF Print Date: 5/1/2026
Additional Imagery info:	



Channel Features

- Channel Center Line
- Channel Toe
- Channel Dimensions

Aids to Navigation

- Green Side Aids
- Red Side Aids
- Lights

MLLW

≤ 25	25 - 30	30 - 35	35 - 37	37 - 39	39 - 41	41 - 43	43 - 45	> 45
------	---------	---------	---------	---------	---------	---------	---------	------

NOTES:

- Horizontal coordinates are referenced to Texas State Plane Coordinate System, South Central Zone NAD83 US Survey Feet.
- Elevations are referenced to Mean Lower Low Water (MLLW) datum.
- This project was designed by the Galveston District of the U.S. Army Corps of Engineers. The initials and signatures and registration designations of individuals appear on these project documents within the scope of their employment as required by 47 CFR 111.11 - 111.12.
- The information depicted on this survey map represents the results of surveys made on the dates indicated and can only be considered as indicating the general conditions existing at that time. These conditions are subject to rapid change due to shoaling events. A prudent mariner should not rely exclusively on the information provided here. Required by 33 CFR 209.225
- For the most up to date information please check our website at: <http://www.usace.army.mil/Missions/Navigation/HydrographicSurveys/>

Service Layer Credits: World Topographic Map: City of Houston, HPB, Texas Parks & Wildlife, Esri, HERE, Garmin, INCREMENT P, USGS, METINASA, NGA, EPA, USDA
World Imagery: Vector
World Ocean Base: Esri, GEBCO, Garmin, NaturalVue

Additional Combined Survey Dates and Stationing:
 Combined survey dates 20260416_AD_19_727P96_771P55; 20260416_AD_18_684P03_727P96;
 20260423_AD_20_771P55_833P05

Coordinate System: NAD 1983 StatePlane Texas South Central FIPS 4204 Feet
 Projection: Lambert Conformal Conic

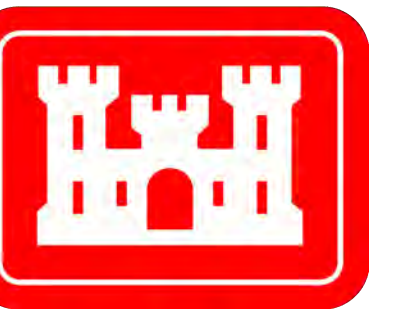
Dredging Reach Extent

Hydrographic Survey Extent

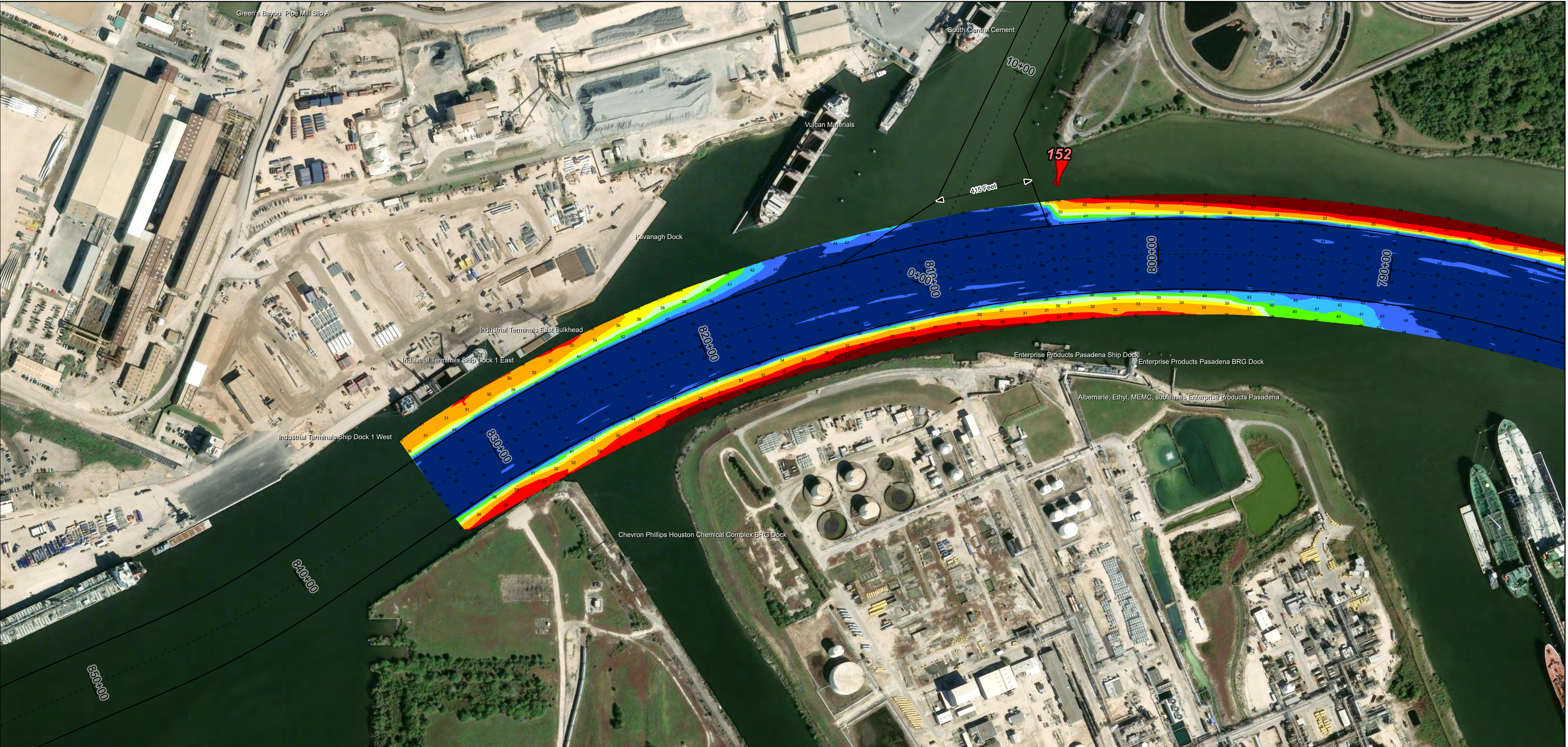
HYDROGRAPHIC SURVEY
 U.S. ARMY ENGINEER DISTRICT
 CORPS OF ENGINEERS
 GALVESTON, TEXAS

Station: 684+03.19 to 833+05.17
HOUSTON
 Boggy Bayou to Greens Bayou

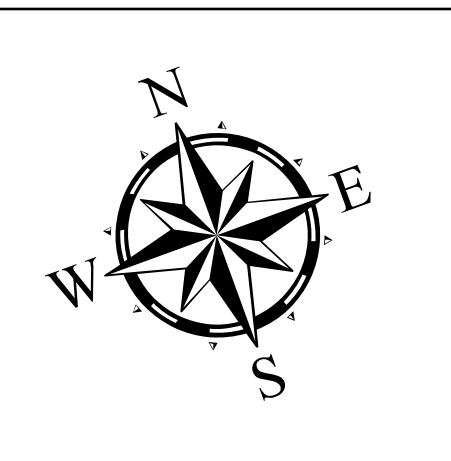
Houston Ship Channel: Boggy Bayou to Greens Bayou



U.S. Army Corps of Engineers
Galveston District



Latest Survey Collection Date: 23 April 2026	Authorized Depth: -41.5ft.
Document Page: 3 of 3	Width Range: 300ft to 300ft
Scale: 1:2,500	Side Slope Ratio: 1:2.5 (Rise : Run)
Mapped by: M3AOXPAC	PDF Print Date: 5/1/2026
Website Index Number: 40	
Additional Imagery info:	



Channel Features

- Channel Center Line
- Channel Toe
- Channel Dimensions

Aids to Navigation

- Green Side Aids
- Red Side Aids
- Lights

MLLW

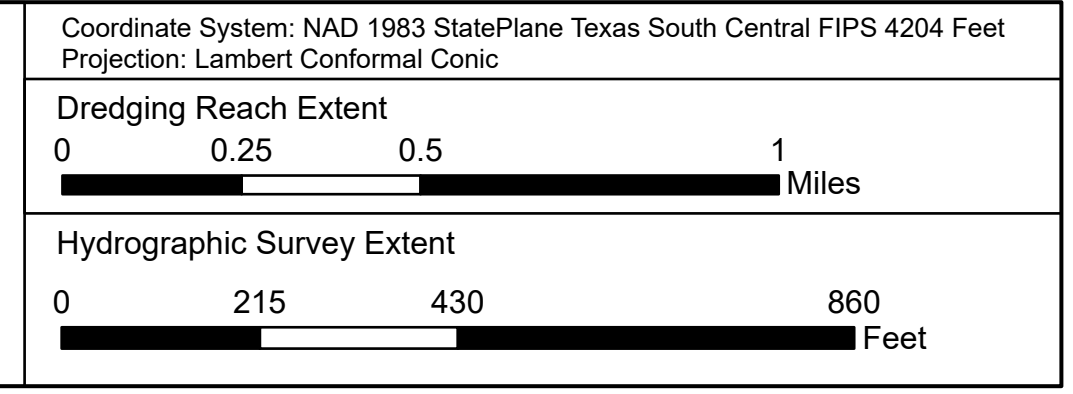
≤ 25	25 - 30	30 - 35	35 - 37	37 - 39	39 - 41	41 - 43	43 - 45	> 45
------	---------	---------	---------	---------	---------	---------	---------	------

NOTES:

- Horizontal coordinates are referenced to Texas State Plane Coordinate System, South Central Zone NAD83 US Survey Feet.
- Elevations are referenced to Mean Lower Low Water (MLLW) datum.
- This project was designed by the Galveston District of the U.S. Army Corps of Engineers. The initials and signatures and registration designations of individuals appear on these project documents within the scope of their employment as required by 47 CFR 117.1-18.132.
- The information depicted on this survey map represents the results of surveys made on the dates indicated and can only be considered as indicating the general conditions existing at that time. These conditions are subject to rapid change due to shoaling events. A prudent mariner should not rely exclusively on the information provided here. Required by 33 CFR 209.325.
- For the most up to date information please check our website at: <http://www.usace.army.mil/Missions/Navigation/HydrographicSurveys/>

Service Layer Credits: World Topographic Map: City of Houston, HPB, Texas Parks & Wildlife, Esri, HERE, Garmin, INCREMENT P, USGS, METINASA, NGA, EPA, USA, World Imagery: Vector World Ocean Base: Esri, GEBCO, Garmin, NaturalVue

Additional Combined Survey Dates and Stationing:
 Combined survey dates 20260416_AD_19_727P96_771P55; 20260416_AD_18_684P03_727P96;
 20260423_AD_20_771P55_833P05



HYDROGRAPHIC SURVEY
 U.S. ARMY ENGINEER DISTRICT
 CORPS OF ENGINEERS
 GALVESTON, TEXAS

Station: 684+03.19 to 833+05.17
 HOUSTON
 Boggy Bayou to Greens Bayou