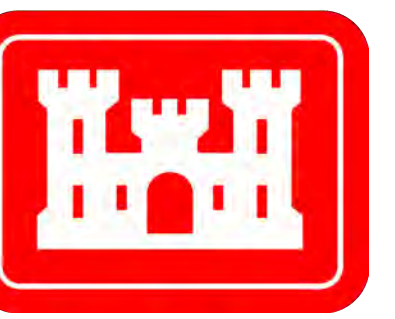
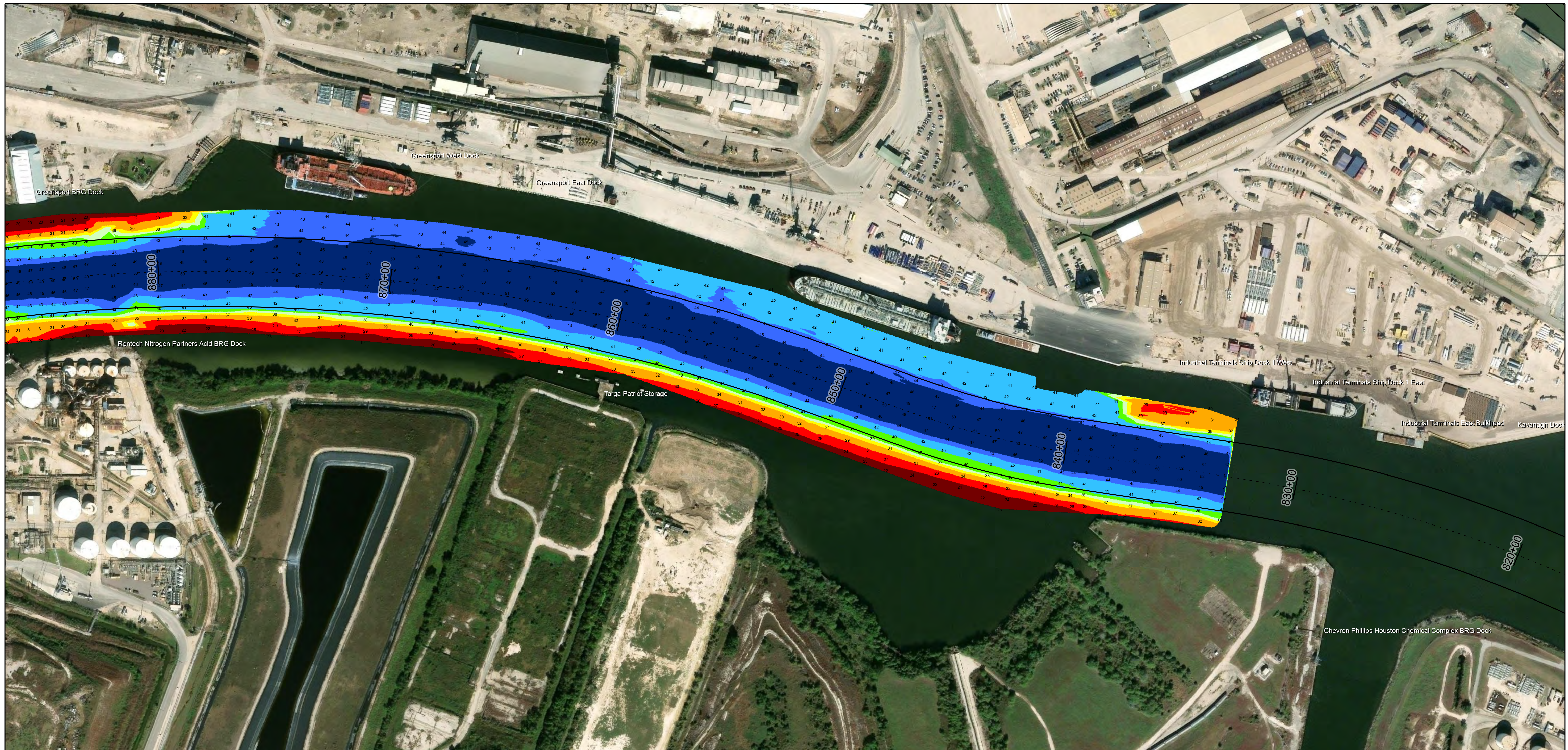
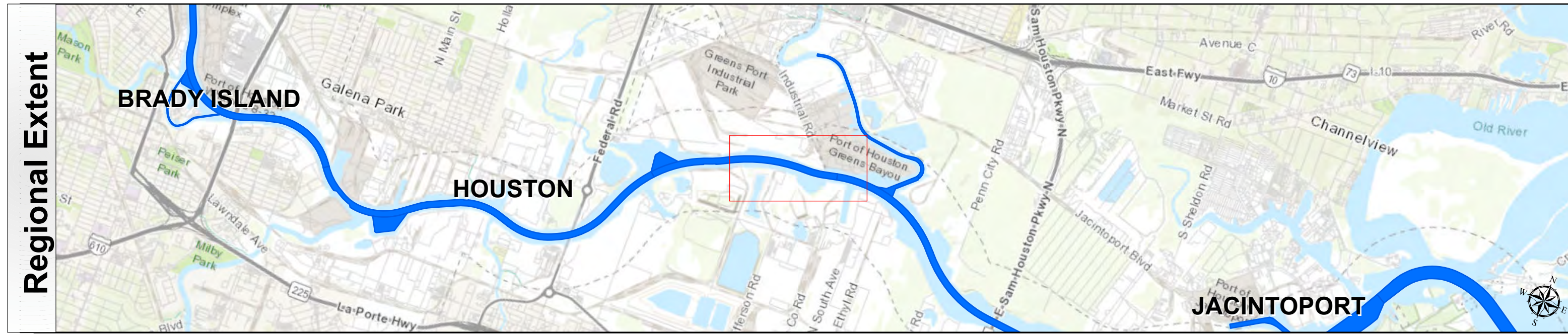


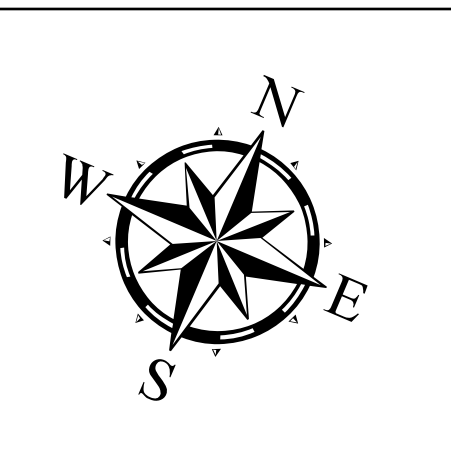
Houston Ship Channel: Greens Bayou to Hunting Bayou (Upper End)



U.S. Army Corps of Engineers
Galveston District



Authorized Depth: -41.5ft.	Latest Survey Collection Date: 20 March 2026
Width Range: 300ft to 300ft	Document Page: 1 of 2
Side Slope Ratio: 1:2.5 (Rise : Run)	Scale: 1:2,500
PDF Print Date: 4/24/2026	Website Index Number: 41
	Mapped by: M3AOXPAC
	Additional Imagery info:



Channel Features

- Channel Center Line
- Channel Toe
- Channel Dimensions

Aids to Navigation

- Green Side Aids
- Red Side Aids
- Lights

MLLW

≤ 25, 25 - 30, 30 - 35, 35 - 37, 37 - 39, 39 - 41, 41 - 43, 43 - 45, > 45

NOTES:

- Horizontal coordinates are referenced to Texas State Plane Coordinate System, South Central Zone NAD83 US Survey Feet.
- Elevations are referenced to Mean Lower Low Water (MLLW) datum.
- This project was designed by the Galveston District of the U.S. Army Corps of Engineers. The initials and signatures and registration designations of individuals appear on these project documents within the scope of their employment as required by 47 CFR 111.111-18.132.
- The information depicted on this survey map represents the results of surveys made on the dates indicated and can only be considered as indicating the general conditions existing at that time. These conditions are subject to rapid change due to shoaling events. A prudent mariner should not rely exclusively on the information provided here. Required by 33 CFR 209.325
- For the most up to date information please check our website at: <http://www.usace.army.mil/Missions/Navigation/HydrographicSurveys/>

Service Layer Credits: World Topographic Map: City of Houston, HPB, Texas Parks & Wildlife, Esri, HERE, Garmin, INCREMENT P, USGS, METINASA, NGA, EPA, USDA
World Imagery: Vector
World Ocean Base: Esri, GEBCO, Garmin, NaturalVue

Additional Combined Survey Dates and Stationing:
Combined survey dates 20260205_CS; 20260320_PR_883P00_925P25

Coordinate System: NAD 1983 StatePlane Texas South Central FIPS 4204 Feet
Projection: Lambert Conformal Conic

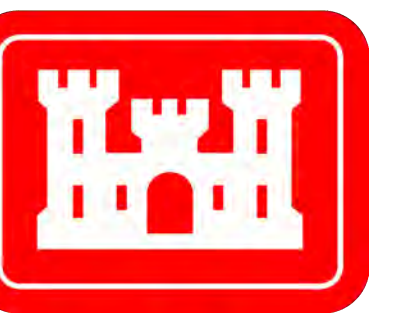
Dredging Reach Extent

Hydrographic Survey Extent

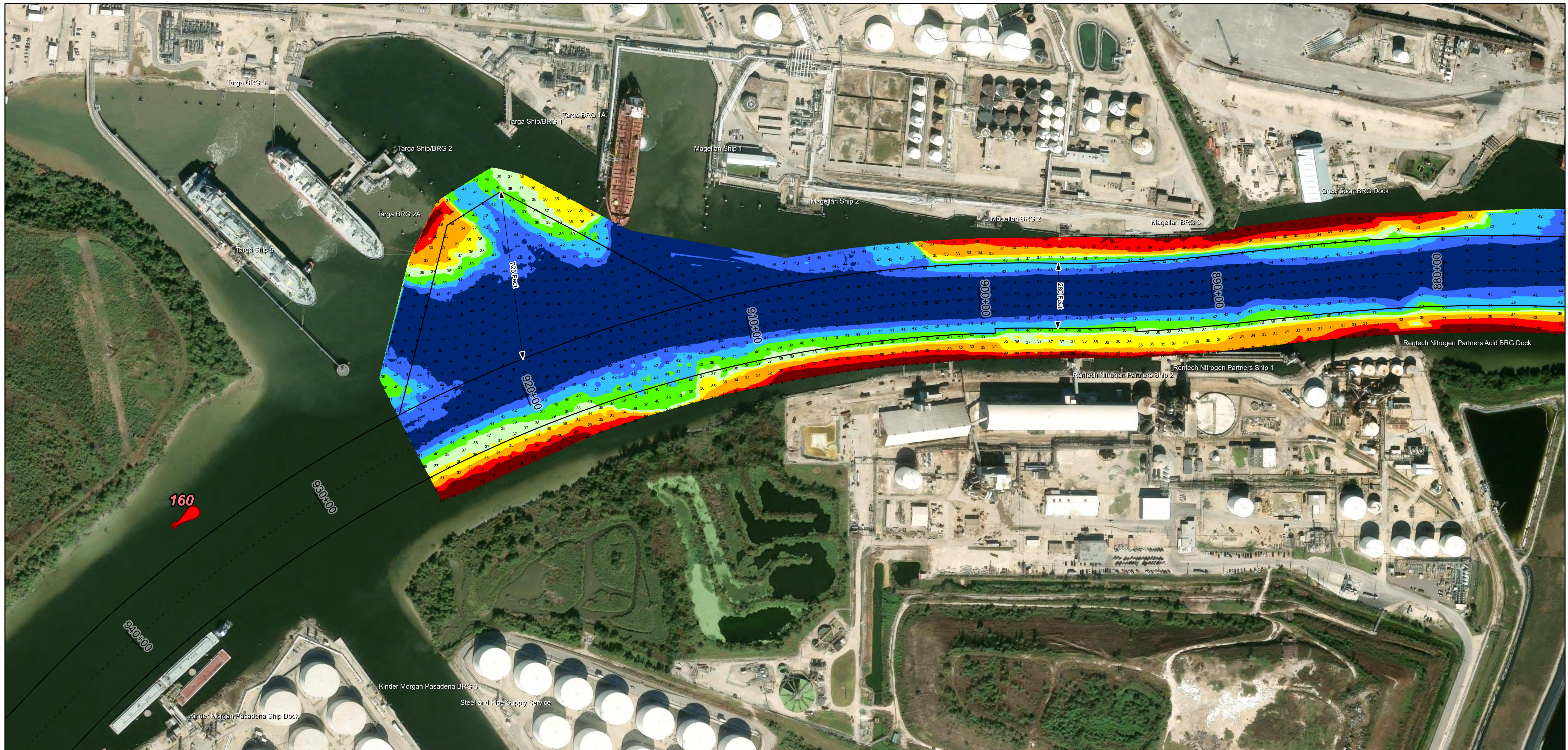
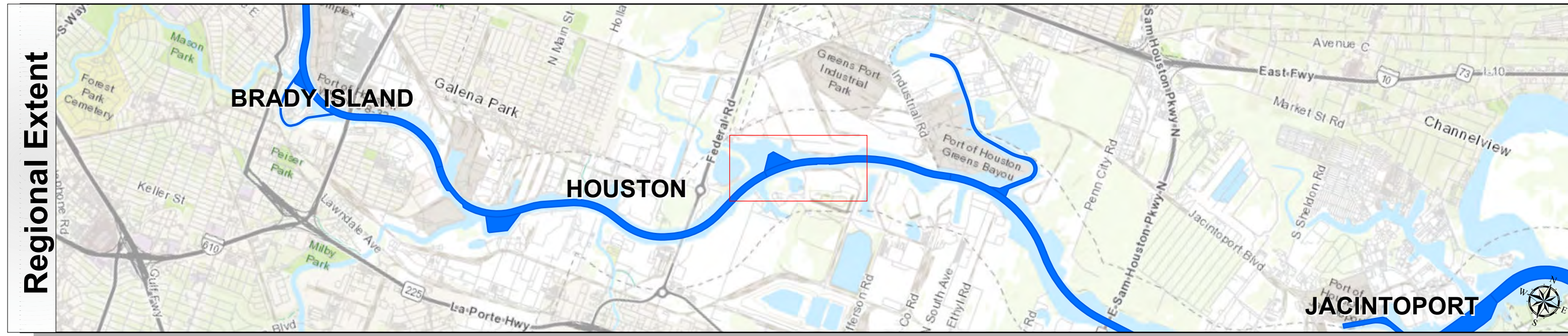
HYDROGRAPHIC SURVEY
U.S. ARMY ENGINEER DISTRICT
CORPS OF ENGINEERS
GALVESTON, TEXAS

Station: 833+05 to 925+25
HOUSTON
Greens Bayou to Hunting Bayou (Upper End)

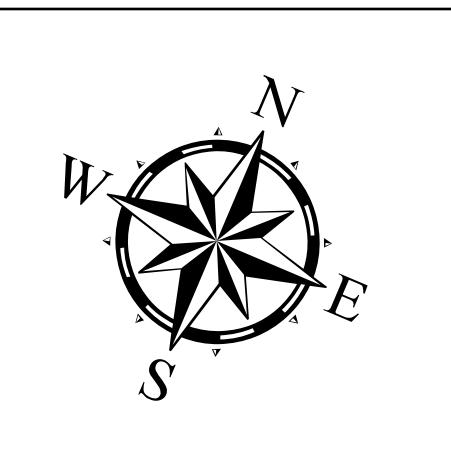
Houston Ship Channel: Greens Bayou to Hunting Bayou (Upper End)



U.S. Army Corps of Engineers
Galveston District



Authorized Depth: -41.5ft.	Latest Survey Collection Date: 20 March 2026
Width Range: 300ft to 300ft	Document Page: 2 of 2
Side Slope Ratio: 1:2.5 (Rise : Run)	Scale: 1:2,500
PDF Print Date: 4/24/2026	Website Index Number: 42
	Mapped by: M3AOXPAC
	Additional Imagery info:



Channel Features

- Channel Center Line
- Channel Toe
- Channel Dimensions

Aids to Navigation

- Green Side Aids
- Red Side Aids
- Lights

MLLW

≤ 25, 25 - 30, 30 - 35, 35 - 37, 37 - 39, 39 - 41, 41 - 43, 43 - 45, > 45

NOTES:

- Horizontal coordinates are referenced to Texas State Plane Coordinate System, South Central Zone NAD83 US Survey Feet.
- Elevations are referenced to Mean Lower Low Water (MLLW) datum.
- This project was designed by the Galveston District of the U.S. Army Corps of Engineers. The initials and signatures and registration designations of individuals appear on these project documents within the scope of their employment as required by 47CFR 117.11-18132.
- The information depicted on this survey map represents the results of surveys made on the dates indicated and can only be considered as indicating the general conditions existing at that time. These conditions are subject to rapid change due to shoaling events. A prudent mariner should not rely exclusively on the information provided here. Required by 33 CFR 209.225
- For the most up to date information please check our website at: <http://www.usace.army.mil/Missions/Navigation/HydrographicSurveys/>

Service Layer Credits: World Topographic Map: City of Houston, HPB, Texas Parks & Wildlife, Esri, HERE, Garmin, INCREMENT P, USGS, METINASA, NGA, EPA, USDA
World Imagery: Vector
World Ocean Base: Esri, GEBCO, Garmin, NaturalVue

Additional Combined Survey Dates and Stationing:
Combined survey dates 20260205_CS; 20260320_PR_883P00_925P25

Dredging Reach Extent

0 0.25 0.5 1 Miles

Hydrographic Survey Extent

0 215 430 860 Feet

Coordinate System: NAD 1983 StatePlane Texas South Central FIPS 4204 Feet
Projection: Lambert Conformal Conic

HYDROGRAPHIC SURVEY
U.S. ARMY ENGINEER DISTRICT
CORPS OF ENGINEERS
GALVESTON, TEXAS

Station: 833+05 to 925+25
HOUSTON
Greens Bayou to Hunting Bayou (Upper End)