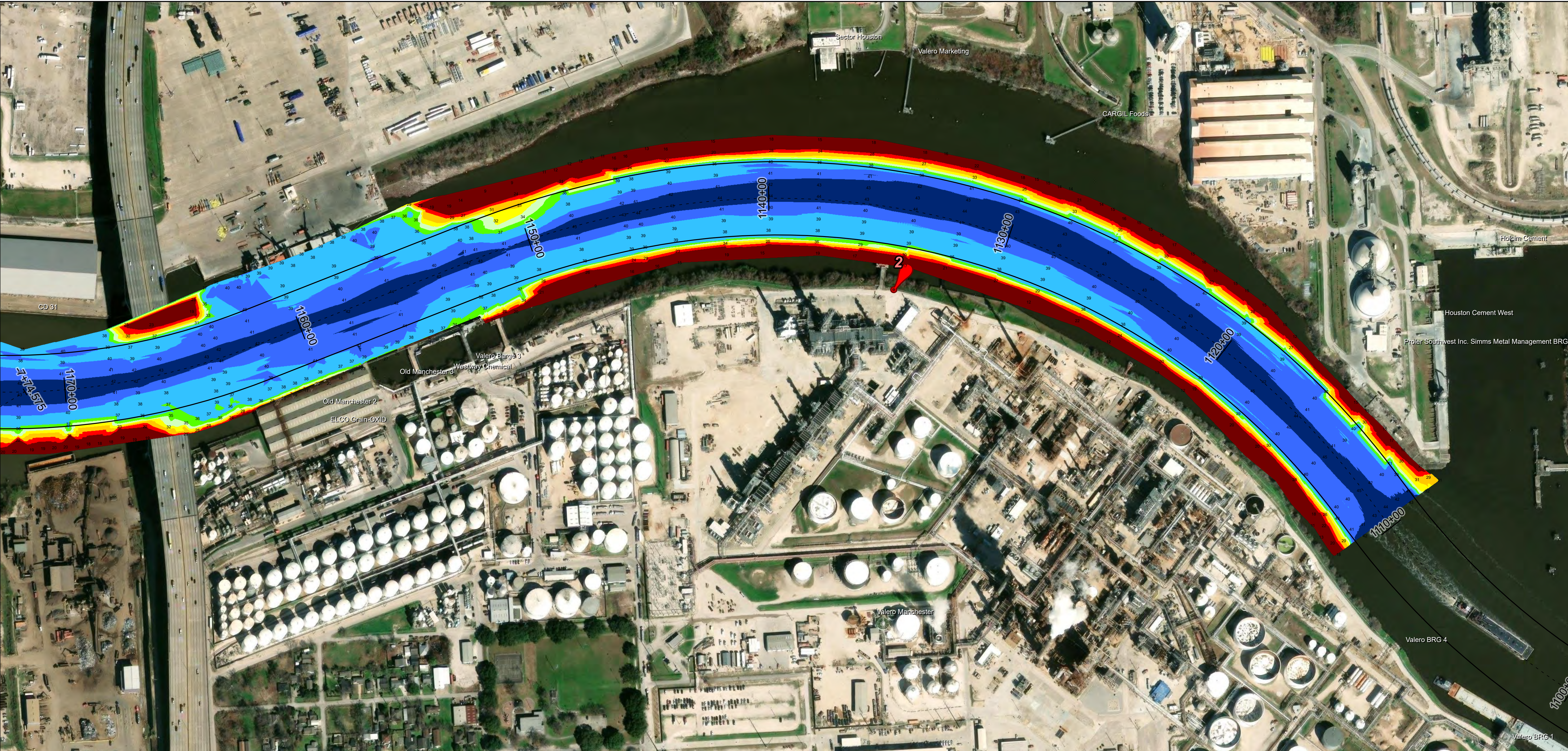


Houston Ship Channel: Sims Bayou to Houston Ship Channel Turning Basin



U.S. Army Corps of Engineers
Galveston District



Channel Features

- Channel Center Line
- Channel Toe
- Channel Dimensions

Aids to Navigation

- Green Side Aids
- Red Side Aids
- Lights

MLLW

≤ 25 25 - 28 28 - 31 31 - 33 33 - 35 35 - 37 37 - 40 40 - 42 > 42

NOTES:

- Horizontal coordinates are referenced to Texas State Plane Coordinate System, South Central Zone NAD83 US Survey Feet.
- Elevations are referenced to Mean Lower Low Water (MLLW) datum.
- This project was designed by the Galveston District of the U.S. Army Corps of Engineers. The initials and signatures and registration designations of individuals appear on these project documents within the scope of their employment as required by 47CFR 110.1-41.02.
- The information depicted on this survey map represents the results of surveys made on the dates indicated and can only be considered as indicating the general conditions existing at that time. These conditions are subject to rapid change due to shoaling events. A prudent mariner should not rely exclusively on the information provided here. Required by 33 CFR 209.325.
- For the most up to date information please check our website at: <http://www.swg.usace.army.mil/Missions/Navigation/HydrographicSurveys/>

Service Layer Credits: World Imagery, Maxar, Microsoft
World Topographic Map: City of Houston, HPB, Texas Parks & Wildlife, Esri, HERE, Garmin, INCREMENT P, USGS, METNUSA, NGA, EPA, USDA
World Imagery: Maxar
World Ocean Base: Esri, GEBCO, Garmin, NaturalVue

Additional Combined Survey Dates and Stationing:

Combined survey dates 20241219_CS; 20250304_PR_1110P77_1244P00;
20250606_PR_1185P00_1211P00

Coordinate System: NAD 1983 StatePlane Texas South Central FIPS 4204 Feet
Projection: Lambert Conformal Conic

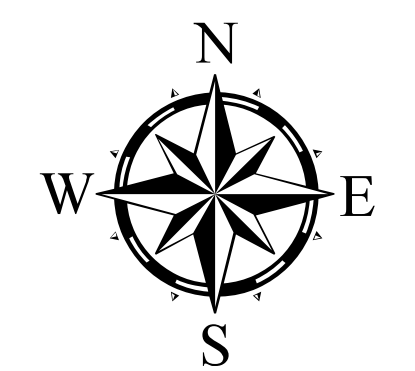
Dredging Reach Extent

0 0.25 0.5 1 Miles

Hydrographic Survey Extent

0 205 410 820 Feet

Latest Survey Collection Date: 06 June 2025		Authorized Depth: -37.5ft.
Document Page: 1 of 3	Website Index Number: 46	Width Range: 250ft to 300ft
Scale: 1:2,400		Side Slope Ratio: 1:2.5 (Rise : Run)
Mapped by: M3AOXPAC		PDF Print Date: 6/19/2025
Additional Imagery info:		



HYDROGRAPHIC SURVEY
U.S. ARMY ENGINEER DISTRICT
CORPS OF ENGINEERS
GALVESTON, TEXAS

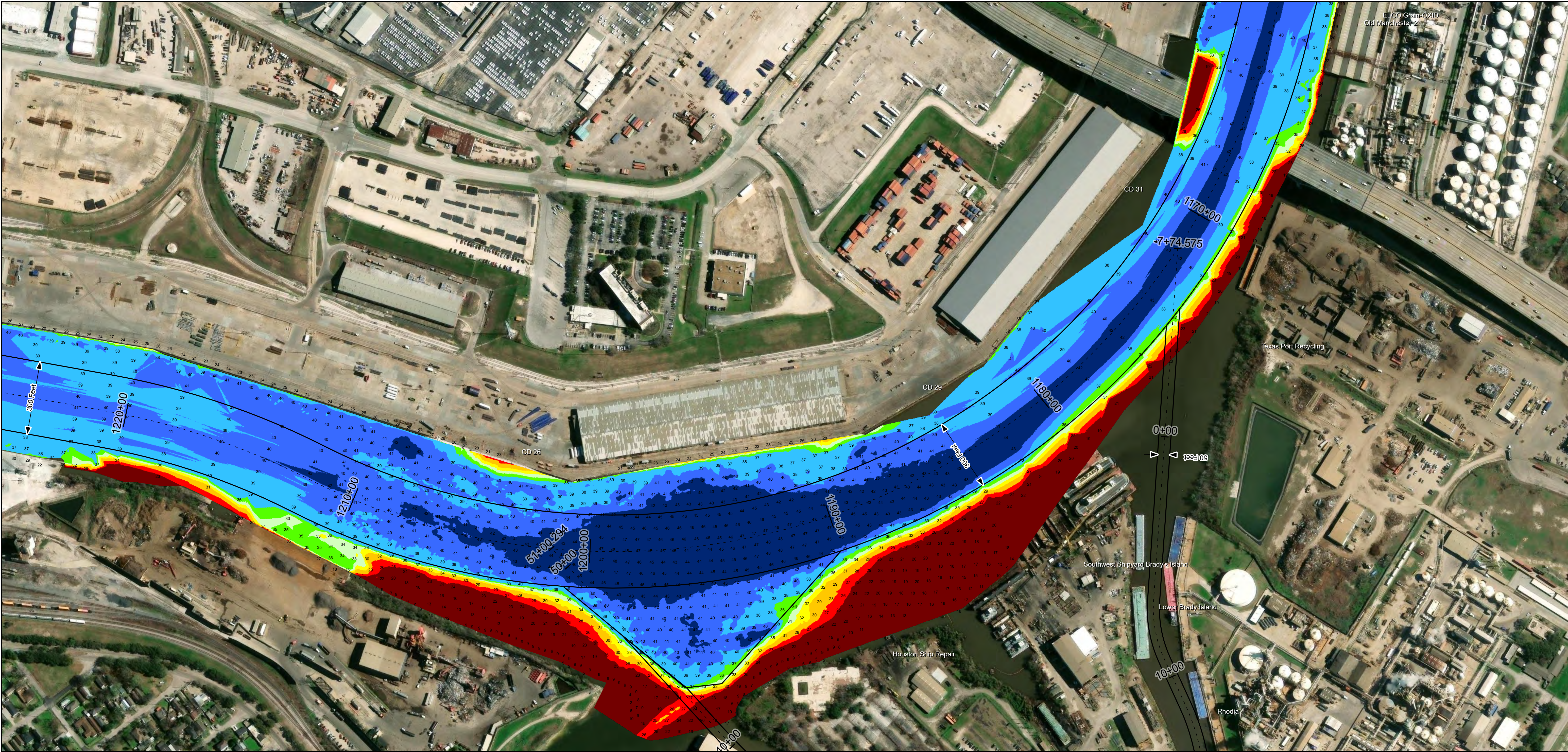
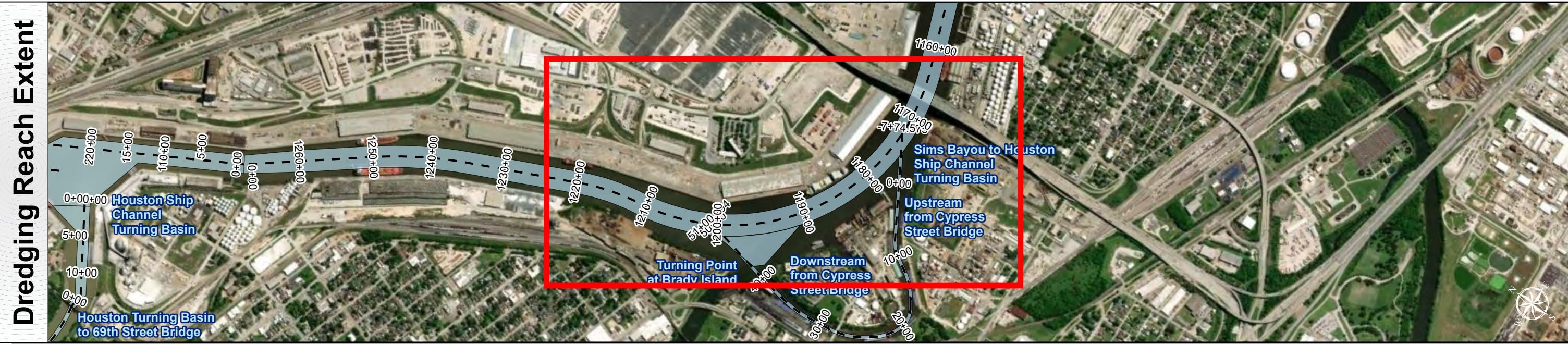
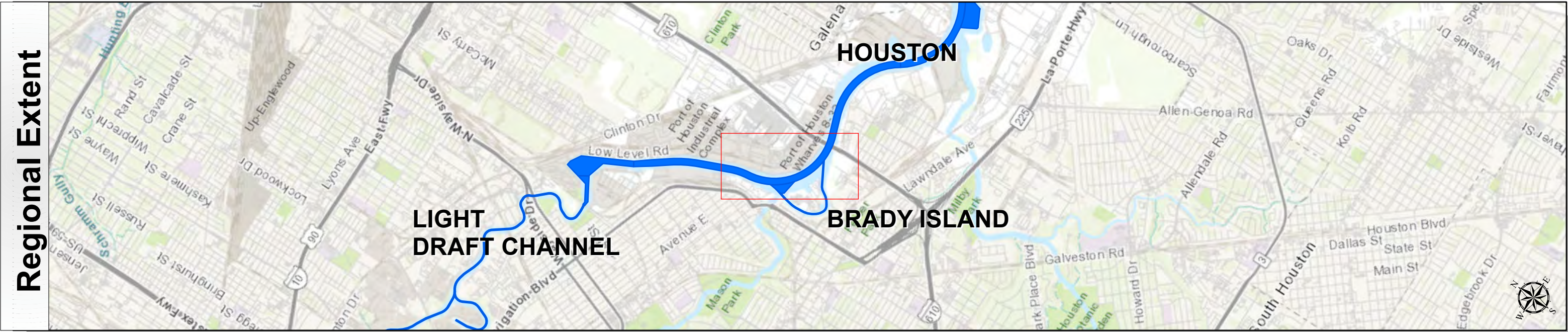
Station: 1110+77.54 to 1266+48.72
HOUSTON
Sims Bayou to Houston Ship Channel Turning Basin

Houston Ship Channel: Sims Bayou to Houston Ship Channel Turning Basin



U.S. Army Corps of Engineers
Galveston District





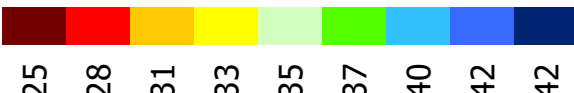
Channel Features

- Channel Center Line
- Channel Toe
- Channel Dimensions

Aids to Navigation

- Green Side Aids
- Red Side Aids
- Lights

MLLW



≤ 25 25 - 28 28 - 31 31 - 33 33 - 35 35 - 37 37 - 40 40 - 42 > 42

NOTES:

- Horizontal coordinates are referenced to Texas State Plane Coordinate System, South Central Zone NAD83 US Survey Feet.
- Elevations are referenced to Mean Lower Low Water (MLLW) datum.
- This project was designed by the Galveston District of the U.S. Army Corps of Engineers. The initials and signatures and registration designations of individuals appear on these project documents within the scope of their employment as required by 47 CFR 111.01-41.02.
- The information depicted on this survey map represents the results of surveys made on the dates indicated and can only be considered as indicating the general conditions existing at that time. These conditions are subject to rapid change due to shoaling events. A prudent mariner should not rely exclusively on the information provided here. Required by 33 CFR 206.225.
- For the most up to date information please check our website at: <http://www.usace.army.mil/Missions/Navigation/HydrographicSurveys/>

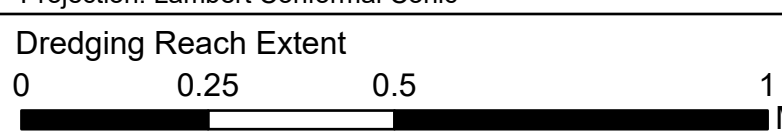
Service Layer Credits: World Imagery, Maxar, Microsoft
World Topographic Map: City of Houston, HPB, Texas Parks & Wildlife, Esri, HERE, Garmin, INCREMENT P, USGS, METINASA, NGA, EPA, USDA
World Imagery, Maxar
World Ocean Base: Esri, GEBCO, Garmin, NaturalVue

Additional Combined Survey Dates and Stationing:

Combined survey dates 20241219_CS; 20250304_PR_1110P77_1244P00;
20250606_PR_1185P00_1211P00

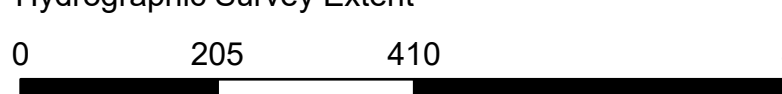
Coordinate System: NAD 1983 StatePlane Texas South Central FIPS 4204 Feet
Projection: Lambert Conformal Conic

Dredging Reach Extent



0 0.25 0.5 1 Miles

Hydrographic Survey Extent



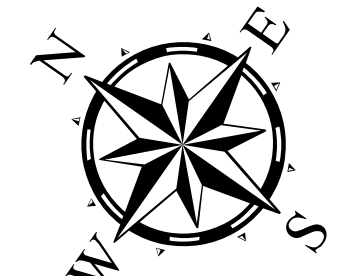
0 205 410 820 Feet

HYDROGRAPHIC SURVEY
U.S. ARMY ENGINEER DISTRICT
CORPS OF ENGINEERS
GALVESTON, TEXAS

Station: 1110+77.54 to 1266+48.72
HOUSTON
Sims Bayou to Houston Ship Channel Turning Basin

Additional Information:

Latest Survey Collection Date: 06 June 2025	Authorized Depth: -37.5ft.
Document Page: 2 of 3	Width Range: 250ft to 300ft
Scale: 1:2,400	Side Slope Ratio: 1:2.5 (Rise : Run)
Mapped by: M3AOXPAC	PDF Print Date: 6/19/2025
Additional Imagery info:	

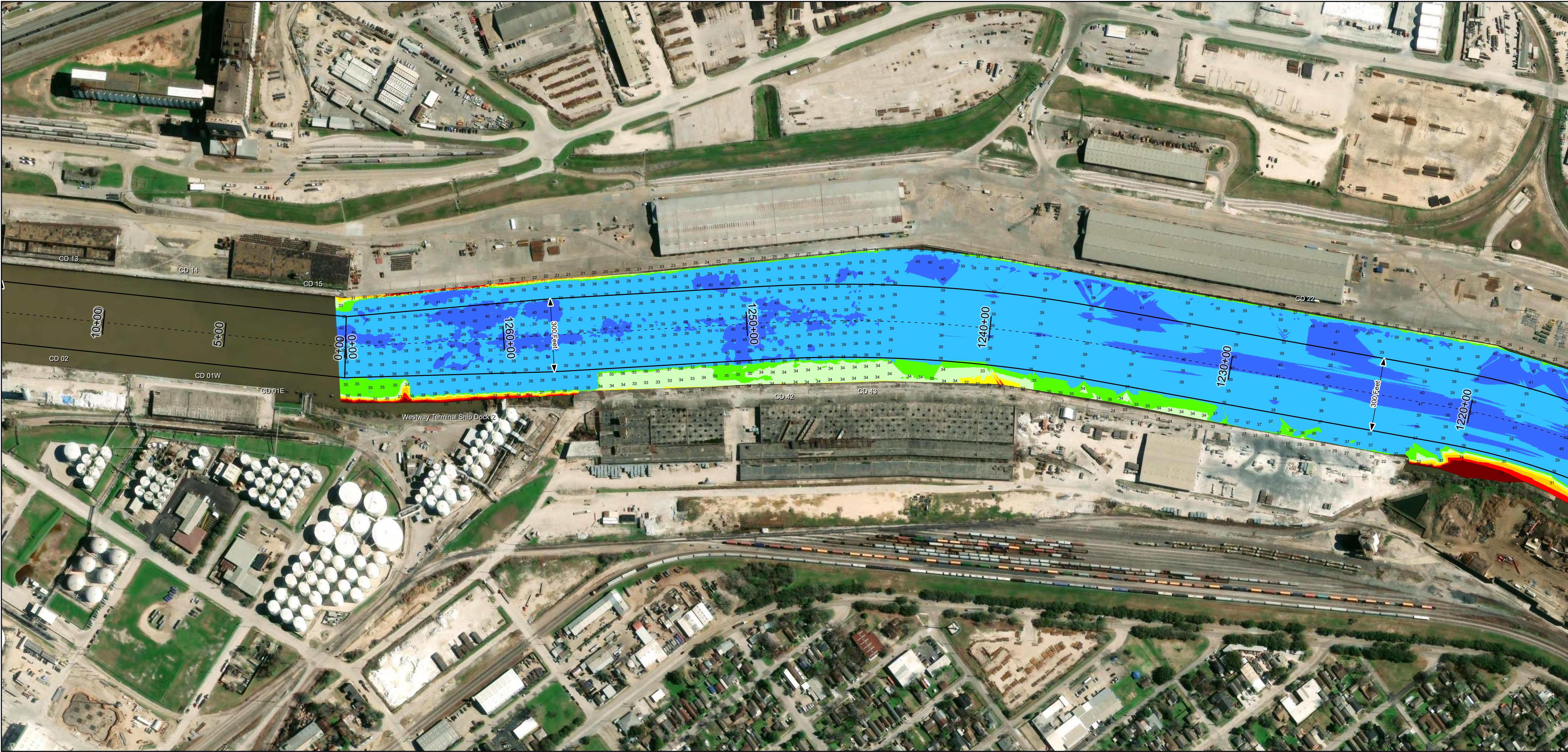
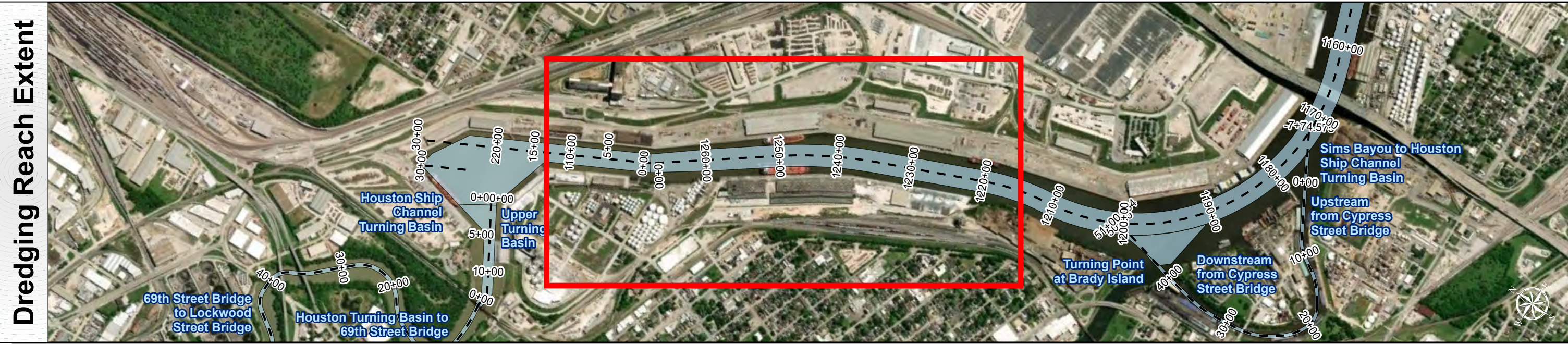
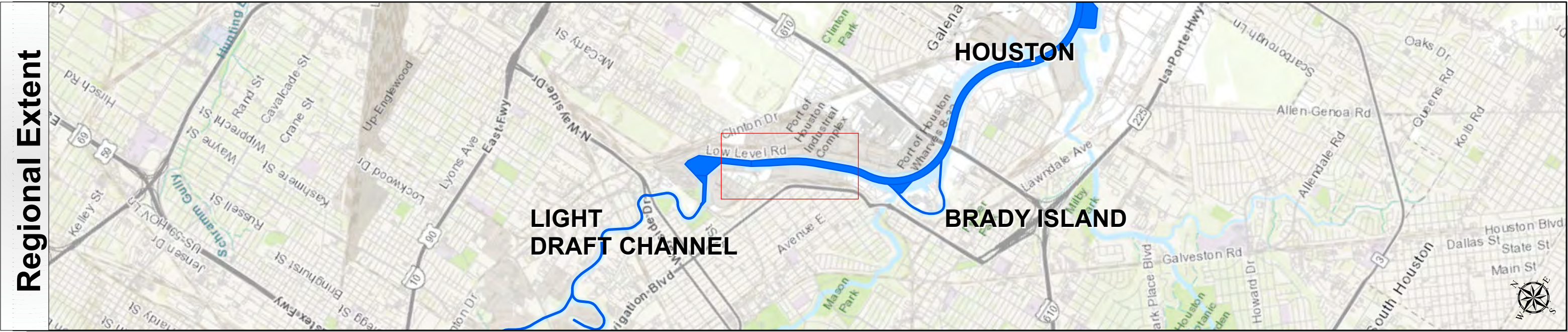


Houston Ship Channel: Sims Bayou to Houston Ship Channel Turning Basin



U.S. Army Corps of Engineers
Galveston District





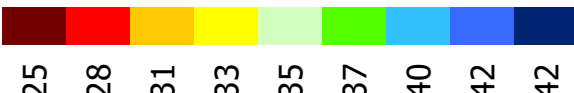
Channel Features

- Channel Center Line
- Channel Toe
- Channel Dimensions

Aids to Navigation

- Green Side Aids
- Red Side Aids
- Lights

MLLW



NOTES:

- Horizontal coordinates are referenced to Texas State Plane Coordinate System, South Central Zone NAD83 US Survey Feet.
- Elevations are referenced to Mean Lower Low Water (MLLW) datum.
- This project was designed by the Galveston District of the U.S. Army Corps of Engineers. The initials and signatures and registration designations of individuals appear on these project documents within the scope of their employment as required by 47CFR 111.101-41.102.
- The information depicted on this survey map represents the results of surveys made on the dates indicated and can only be considered as indicating the general conditions existing at that time. These conditions are subject to rapid change due to shoaling events. A prudent mariner should not rely exclusively on the information provided here. Required by 33 CFR 209.325
- For the most up to date information please check our website at: <http://www.usace.army.mil/Missions/Navigation/HydrographicSurveys/>

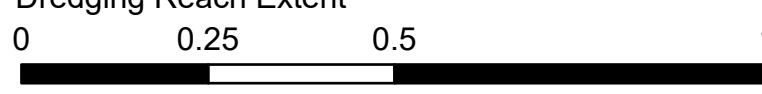
Service Layer Credits: World Imagery: Maxar, Microsoft
World Topographic Map: City of Houston, HPB, Texas Parks & Wildlife, Esri, HERE, Garmin, INCREMENT P, USGS, METINASA, NGA, EPA, USDA
World Imagery: Maxar
World Ocean Base: Esri, GEBCO, Garmin, NaturalVue

Additional Combined Survey Dates and Stationing:

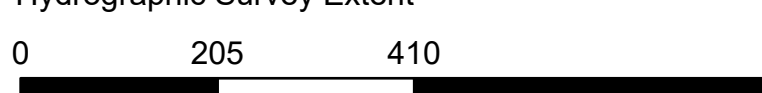
Combined survey dates 20241219_CS; 20250304_PR 1110P77_1244P00;
20250606_PR 1185P00_1211P00

Coordinate System: NAD 1983 StatePlane Texas South Central FIPS 4204 Feet
Projection: Lambert Conformal Conic

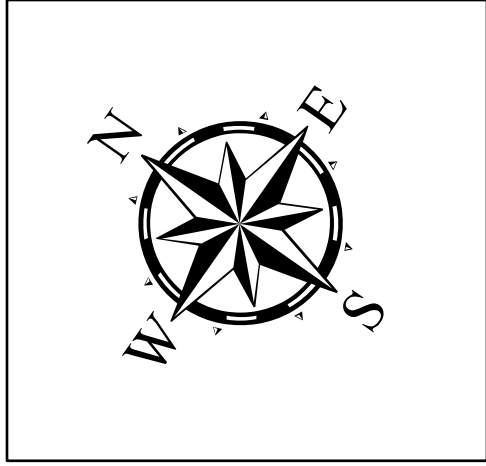
Dredging Reach Extent



Hydrographic Survey Extent



Latest Survey Collection Date: 06 June 2025	Authorized Depth: -37.5ft.
	Width Range: 250ft to 300ft
Document Page: 3 of 3	Side Slope Ratio: 1:2.5 (Rise : Run)
Scale: 1:2,400	PDF Print Date: 6/19/2025
Mapped by: M3AOXPAC	
Additional Imagery info:	



HYDROGRAPHIC SURVEY

U.S. ARMY ENGINEER DISTRICT
CORPS OF ENGINEERS
GALVESTON, TEXAS

Station: 1110+77.54 to 1266+48.72

HOUSTON

Sims Bayou to Houston Ship Channel Turning Basin