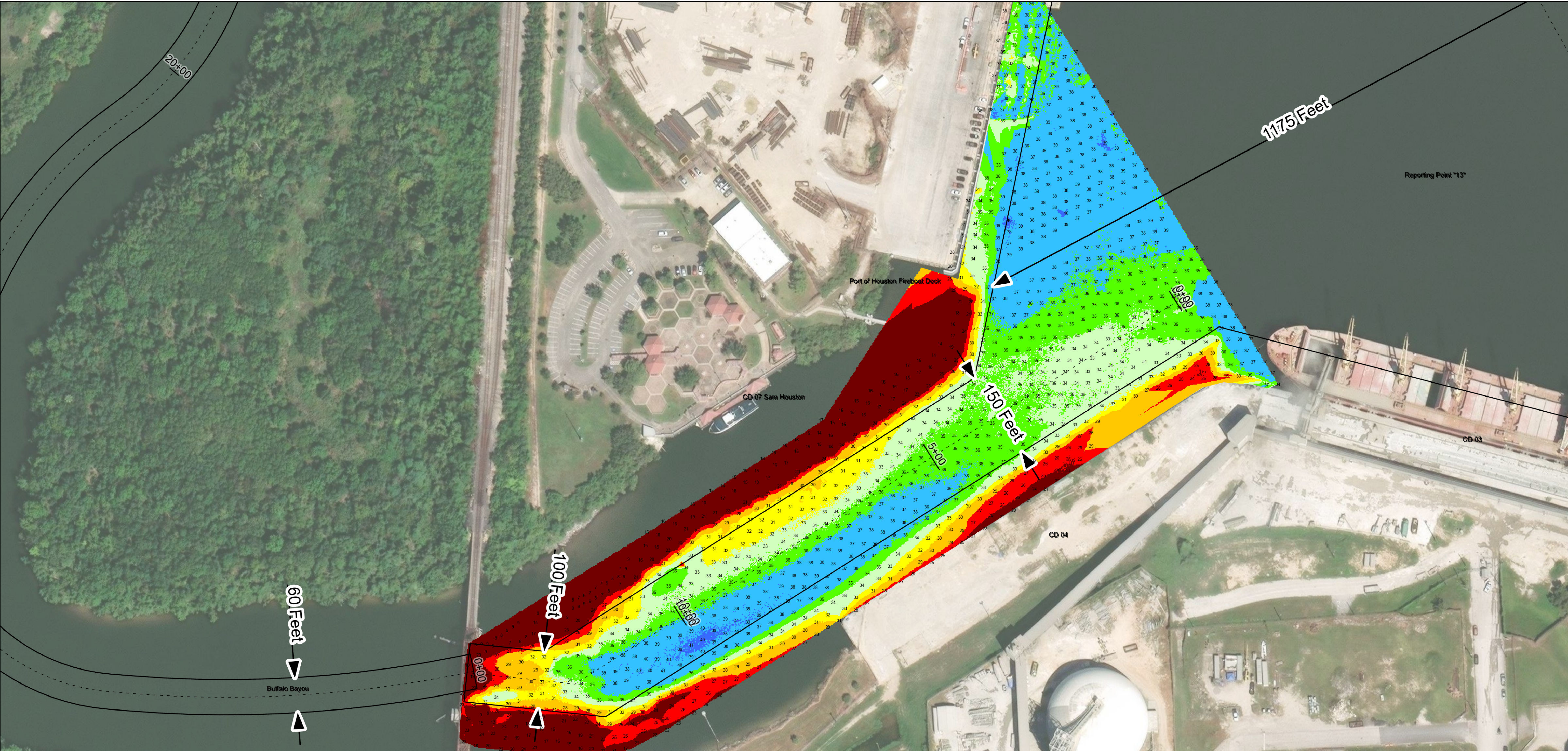
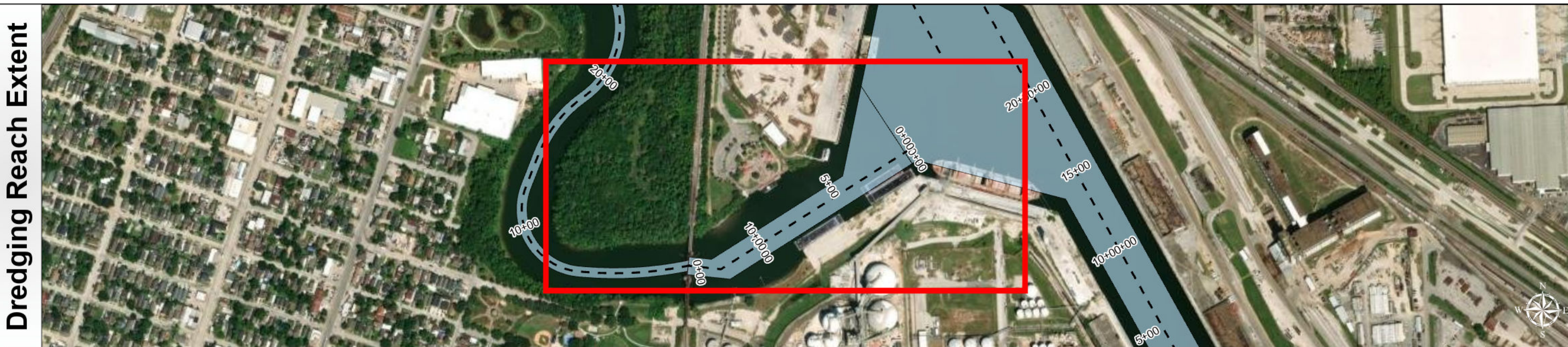
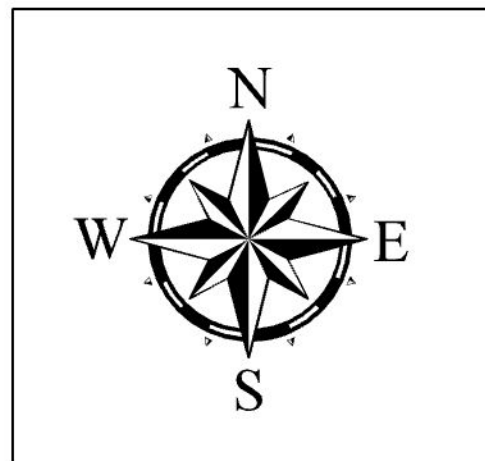


Houston Ship Channel: Upper Turning Basin



Latest Survey Collection Date: 27 April 2026	Authorized Depth: -37.5ft.
Document Page: 1 of 1	Width Range: 100ft to 520ft
Scale: 1:1,000	Side Slope Ratio: 1:2.5 (Rise : Run)
Mapped by: m3odnmhg	PDF Print Date: 5/21/2026
Additional Imagery info:	



Channel Features

- Channel Center Line
- Channel Toe
- Channel Dimensions

Aids to Navigation

- Green Side Aids
- Red Side Aids
- Lights

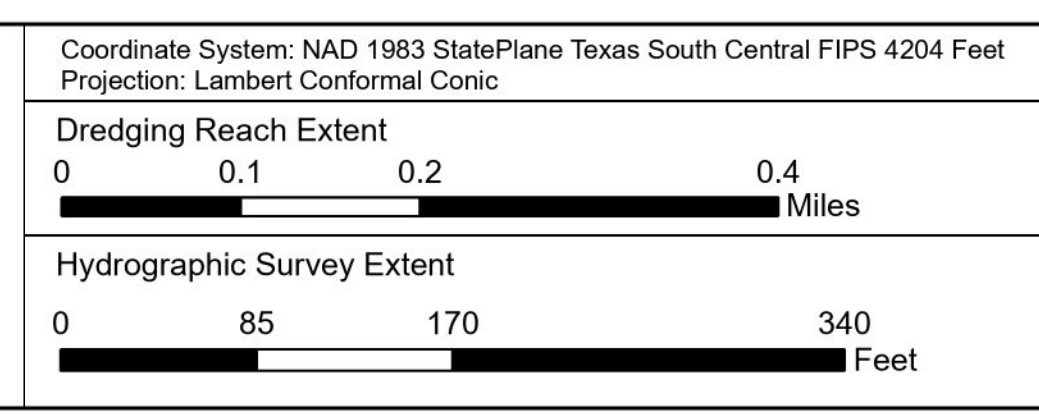
MLLW

NOTES:

- Horizontal coordinates are referenced to Texas State Plane Coordinate System, South Central Zone NAD83 US Survey Feet.
- Elevations are referenced to Mean Lower Low Water (MLLW) datum.
- This project was designed by the Galveston District of the U.S. Army Corps of Engineers. The initials and signatures and registration designations of individuals appear on these project documents within the scope of their employment as required by er1110.1-4.152.
- The information depicted on this survey map represents the results of surveys made on the dates indicated and can only be considered as indicating the general conditions existing at that time. These conditions are subject to rapid change due to shoaling events. A prudent mariner should not rely exclusively on the information provided here. Required by 33 CFR 209.225.
- For the most up to date information please check our website at: <http://www.saw.usace.army.mil/Missions/Navigation/HydrographicSurveys/>

Service Layer Credits: World Imagery, Microsoft, Vantor World Imagery, Vantor World Topographic Map, City of Houston, HPB, Texas Parks & Wildlife, Esri, HERE, Garmin, INCREMENT P, USGS, METINASA, EPA, USDA World Ocean Base, Esri, GEBCO, Garmin, NaturalVue

Additional Combined Survey Dates and Stationing:
COMB_SURV_INFO_HERE



HYDROGRAPHIC SURVEY
U.S. ARMY ENGINEER DISTRICT
CORPS OF ENGINEERS
GALVESTON, TEXAS

Station: 0+32.59 to 10+00
HOUSTON
Upper Turning Basin