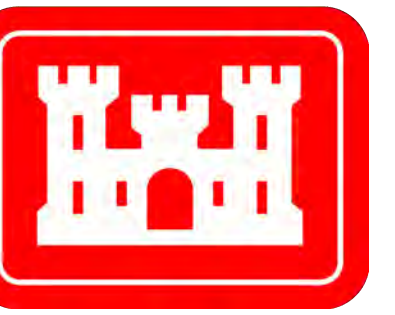
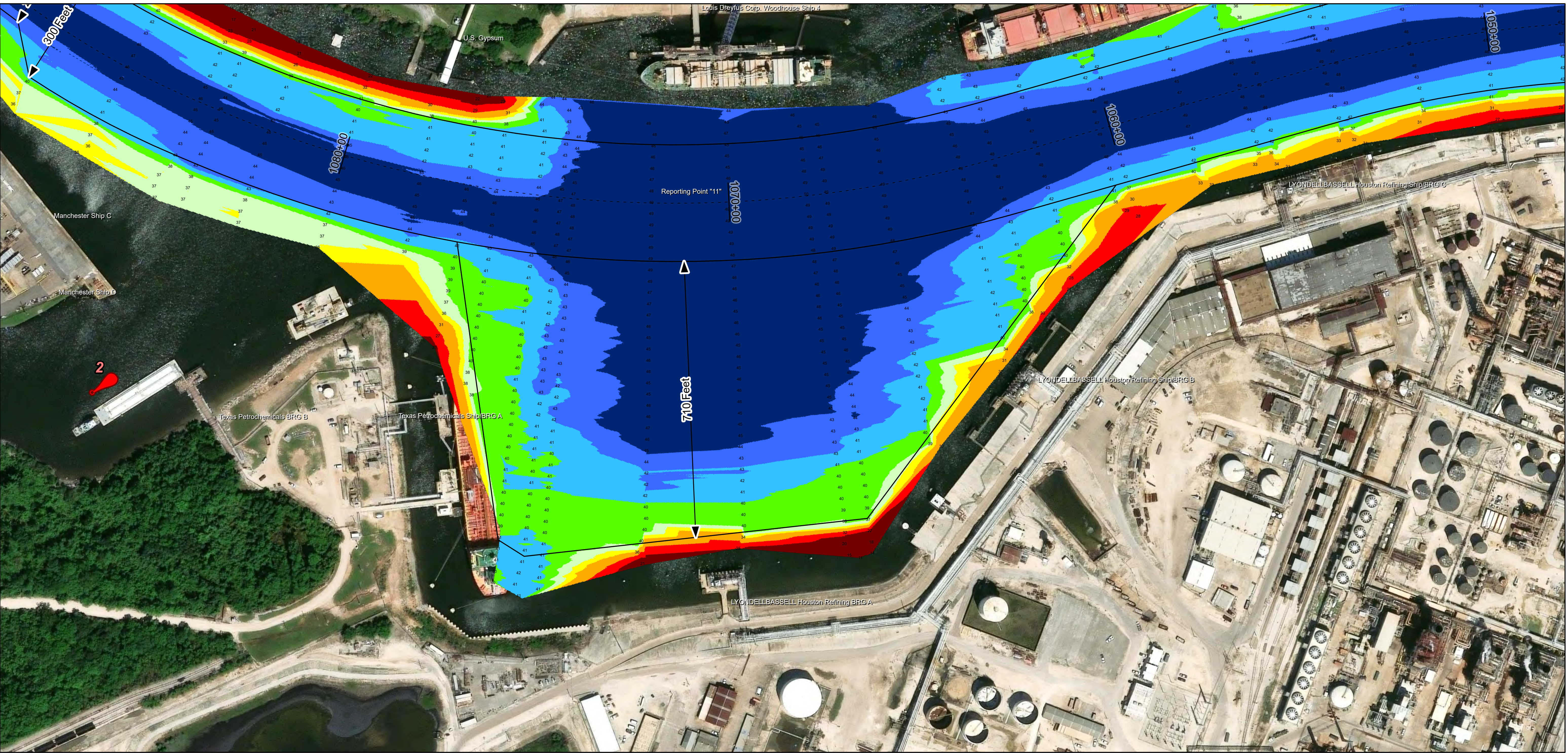
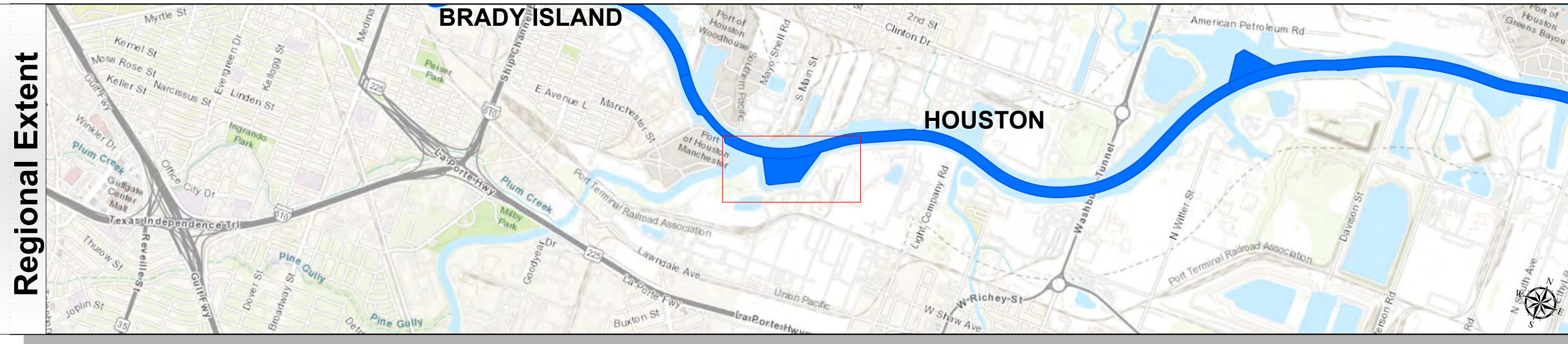


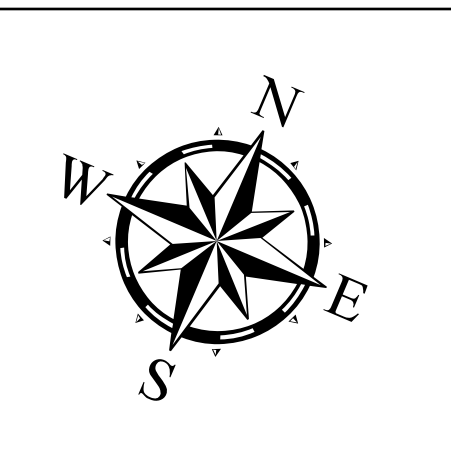
# Houston Ship Channel: Turning Point at Clinton Island



U.S. Army Corps of Engineers  
Galveston District



Latest Survey Collection Date: 10 September 2025	Authorized Depth: -41.5ft.
Document Page: 1 of 1	Width Range: 0ft to 800ft
Scale: 1:1,500	Side Slope Ratio: 1:2.5 (Rise : Run)
Mapped by: m3odnmhg	PDF Print Date: 12/12/2025
Additional Imagery info:	



**HYDROGRAPHIC SURVEY**  
U.S. ARMY ENGINEER DISTRICT  
CORPS OF ENGINEERS  
GALVESTON, TEXAS

**Station: 1060+25 to 1076+75**  
Houston  
Turning Point at Clinton Island

**NOTES:**

- Horizontal coordinates are referenced to Texas State Plane Coordinate System, South Central Zone NAD83 US Survey Feet.
- Elevations are referenced to Mean Lower Low Water (MLLW) datum.
- This project was designed by the Galveston District of the U.S. Army Corps of Engineers. The initials and signatures and registration designations of individuals appear on these project documents within the scope of their employment as required by 47 CFR 111.111-111.112.
- The information depicted on this survey map represents the results of surveys made on the dates indicated and can only be considered as indicating the general conditions existing at that time. These conditions are subject to rapid change due to shoaling events. A prudent mariner should not rely exclusively on the information provided here. Required by 33 CFR 209.325
- For the most up to date information please check our website at: <http://www.usace.army.mil/Missions/Navigation/HydrographicSurveys/>

Service Layer Credits: World Topographic Map: City of Houston, HPB, Texas Parks & Wildlife, Esri, HERE, Garmin, INCREMENT P, USGS, METI/NASA, EPA, USA, World Imagery: Microsoft, Vantor, World Imagery: Vantor, World Ocean Base: Esri, GEBCO, Garmin, NaturalVue