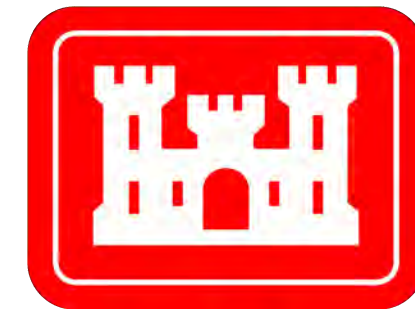


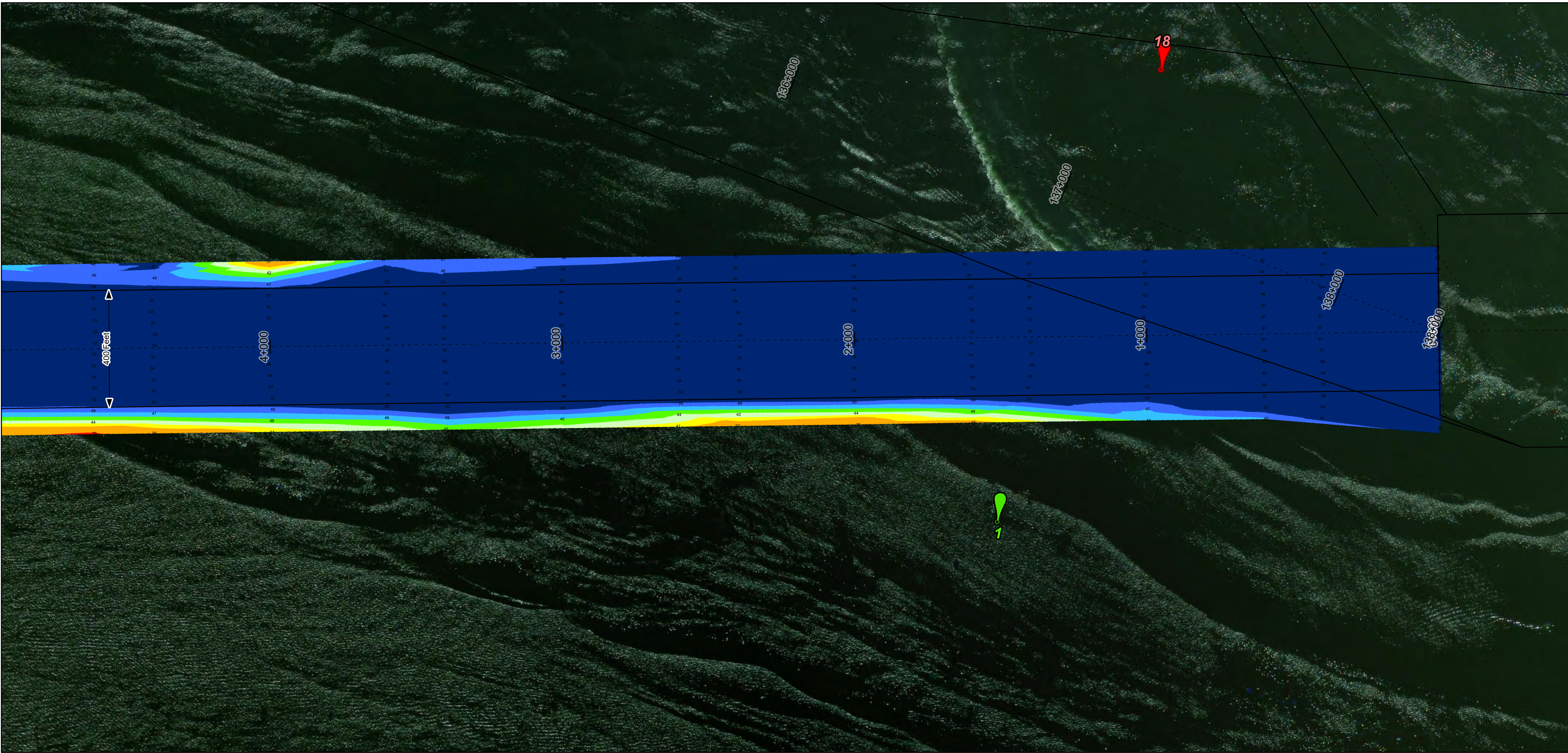
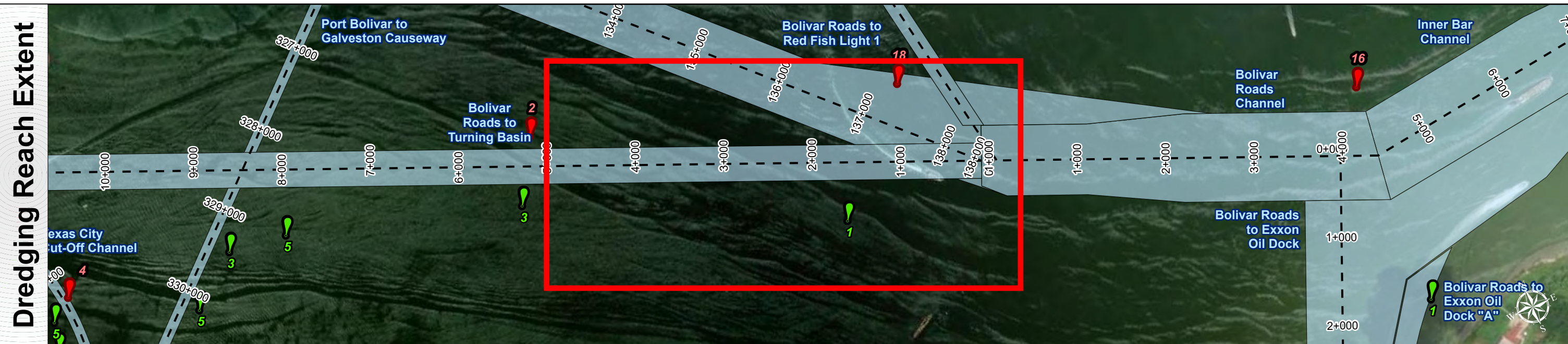
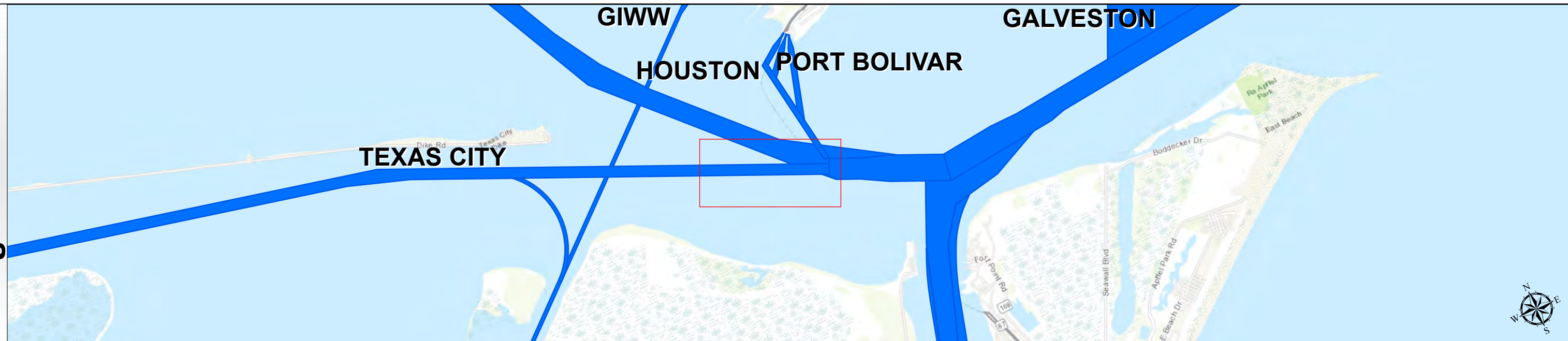
Texas City Harbor Channel: Bolivar Roads to Turning Basin



U.S. Army Corps of Engineers
Galveston District



Regional Extent



Channel Features

- Channel Center Line
- Channel Toe
- Channel Dimensions

Aids to Navigation

- Green Side Aids
- Red Side Aids
- Lights

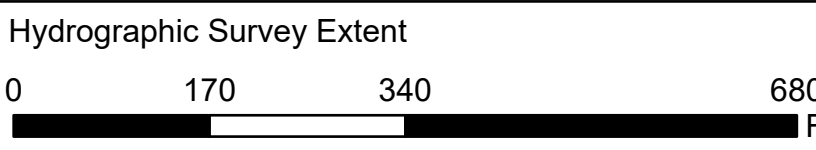
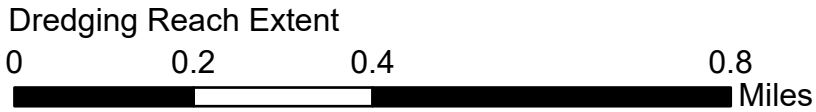
MLLW



NOTES:
1. Horizontal coordinates are referenced to Texas State Plane Coordinate System, South Central Zone NAD83 US Survey Feet.
2. Elevations are referenced to Mean Lower Low Water (MLLW) datum.
3. This project was designed by the Galveston District of the U.S. Army Corps of Engineers. The initials and signatures and registration designations of individuals appear on these project documents within the scope of their employment as required by 47CFR 110.1-41.02.
4. The information depicted on this survey map represents the results of surveys made on the dates indicated and can only be considered as indicating the general conditions existing at that time. These conditions are subject to rapid change due to shoaling events. A prudent mariner should not rely exclusively on the information provided here. Required by 33 CFR 209.325.
5. For the most up to date information please check our website at: <http://www.svg.usace.army.mil/Missions/Navigation/HydrographicSurveys/>
Service Layer Credits: World Topographic Map: Texas Parks & Wildlife, Esri, HERE, Garmin, INCREMENT P, USGS, METINASA, NGA, EPA, USDA
World Imagery: Maxar, Microsoft
World Imagery: Maxar
World Ocean Base: Esri, GEBCO, Garmin, NaturalVue

Additional Combined Survey Dates and Stationing:
Combined surveys: 20241217_CS, 20250303_PR_0P000_34P600.

Coordinate System: NAD 1983 StatePlane Texas South Central FIPS 4204 Feet
Projection: Lambert Conformal Conic



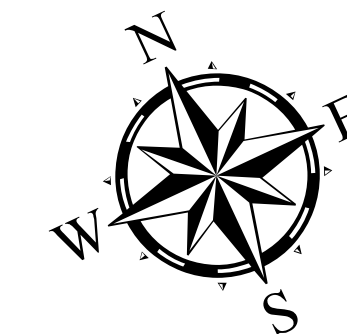
HYDROGRAPHIC SURVEY

U.S. ARMY CORPS OF ENGINEERS
GALVESTON, TEXAS

Station: 0+000 to 36+200.7

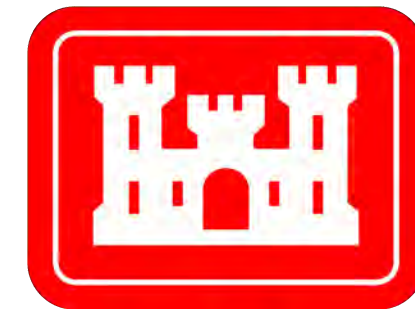
TEXAS CITY

Bolivar Roads to Turning Basin

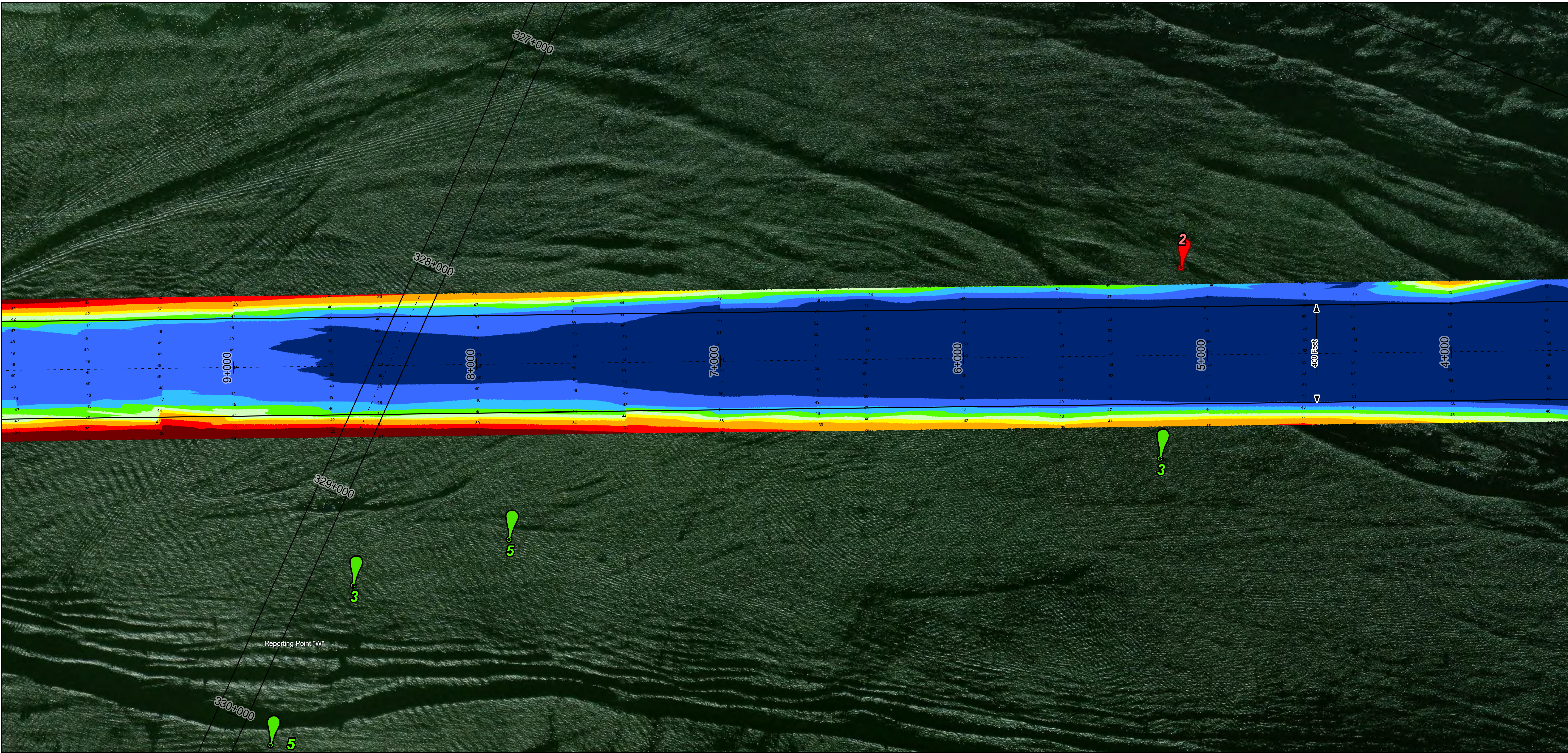
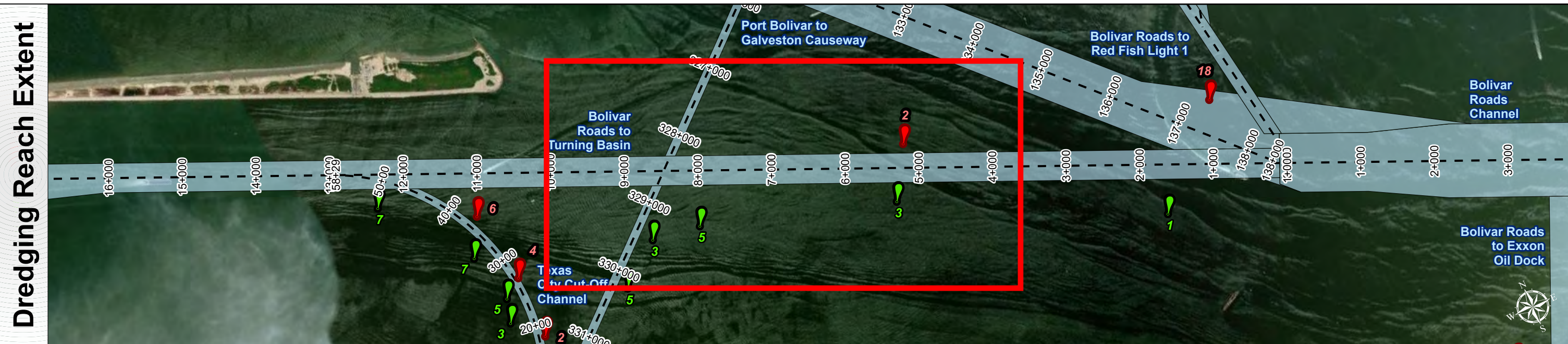


Latest Survey Collection Date: 03 March 2025	Authorized Depth: -46ft.
Document Page: 1 of 8	Width Range: 400ft to 700ft
Scale: 1:2,000	Side Slope Ratio: 1:2.0 (Rise : Run)
Mapped by: m3odnmhg	PDF Print Date: 5/23/2025
Additional Imagery info:	

Texas City Harbor Channel: Bolivar Roads to Turning Basin



U.S. Army Corps of Engineers
Galveston District



Channel Features

- Channel Center Line
- Channel Toe
- Channel Dimensions

Aids to Navigation

- Green Side Aids
- Red Side Aids
- Lights

MLLW

30	35	40	42	44	46	48	50	>
----	----	----	----	----	----	----	----	---

NOTES:

- Horizontal coordinates are referenced to Texas State Plane Coordinate System, South Central Zone NAD83 US Survey Feet.
- Elevations are referenced to Mean Lower Low Water (MLLW) datum.
- This project was designed by the Galveston District of the U.S. Army Corps of Engineers. The initials and signatures and registration designations of individuals appear on these project documents within the scope of their employment as required by 47CFR 110.1-41.02.
- The information depicted on this survey map represents the results of surveys made on the dates indicated and can only be considered as indicating the general conditions existing at that time. These conditions are subject to rapid change due to shoaling events. A prudent mariner should not rely exclusively on the information provided here. Required by 33 CFR 209.325
- For the most up to date information please check our website at: <http://www.usace.army.mil/Missions/Navigation/HydrographicSurveys/>

Service Layer Credits: World Topographic Map: Texas Parks & Wildlife, Esri, HERE, Garmin, INCREMENT P, USGS, METINASA, NGA, EPA, USDA
World Imagery: Maxar, Microsoft
World Imagery: Maxar
World Ocean Base: Esri, GEBCO, Garmin, NaturalVue

Additional Combined Survey Dates and Stationing:

Combined surveys: 20241217_CS, 20250303_PR_0P000_34P600.

Coordinate System: NAD 1983 StatePlane Texas South Central FIPS 4204 Feet
Projection: Lambert Conformal Conic

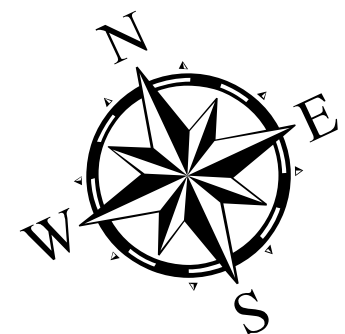
Dredging Reach Extent

0 0.25 0.5 1 Miles

Hydrographic Survey Extent

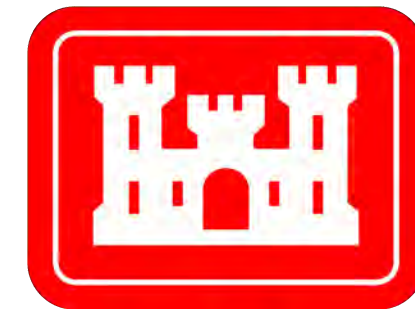
0 205 410 820 Feet

Latest Survey Collection Date: 03 March 2025		Authorized Depth: -46ft.
Document Page: 2 of 8	Website Index Number: 2	Width Range: 400ft to 700ft
Scale: 1:2,400		Side Slope Ratio: 1:2.0 (Rise : Run)
Mapped by: m3odnmhg		PDF Print Date: 5/23/2025
Additional Imagery info:		



HYDROGRAPHIC SURVEY
U.S. ARMY CORPS OF ENGINEERS
GALVESTON, TEXAS
Station: 0+000 to 36+200.7
TEXAS CITY
Bolivar Roads to Turning Basin

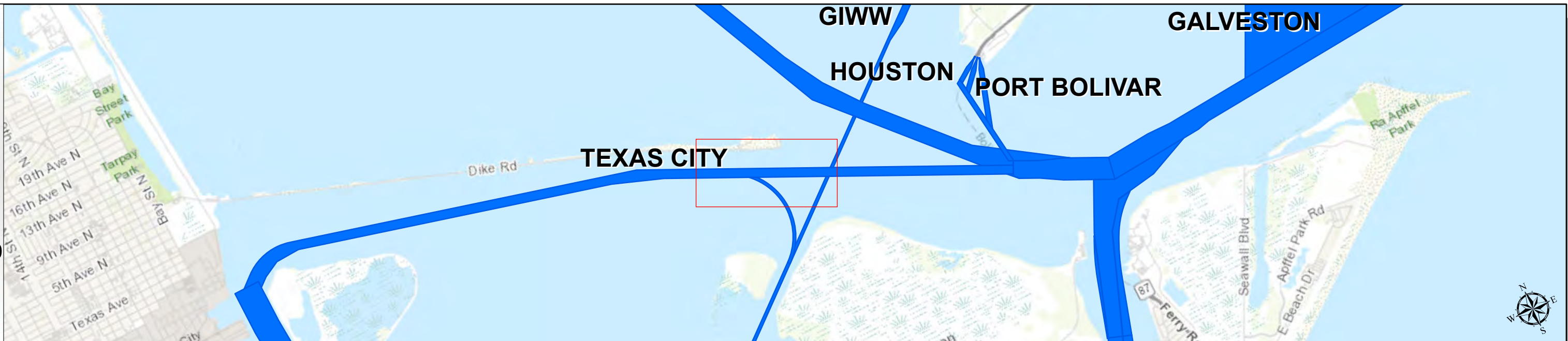
Texas City Harbor Channel: Bolivar Roads to Turning Basin



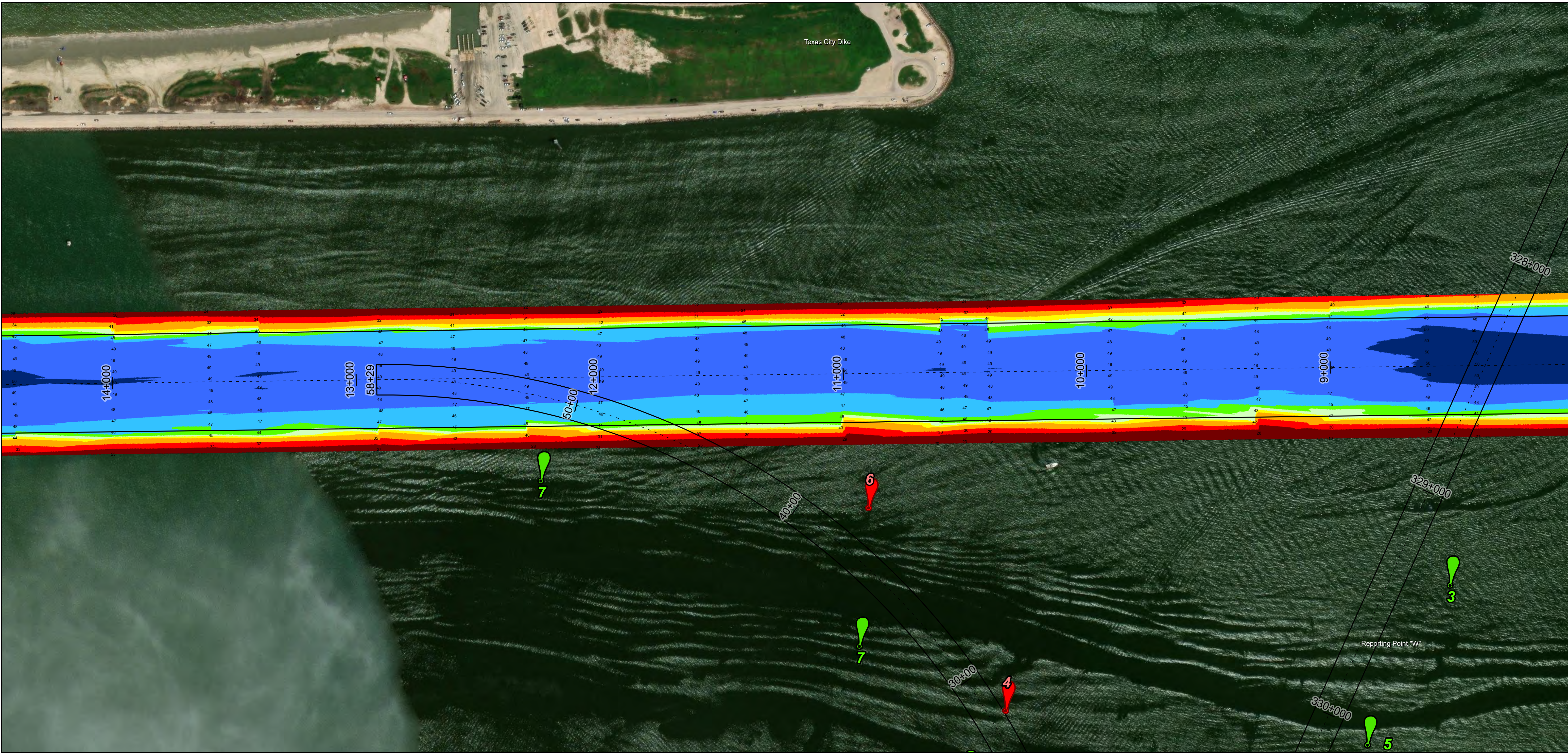
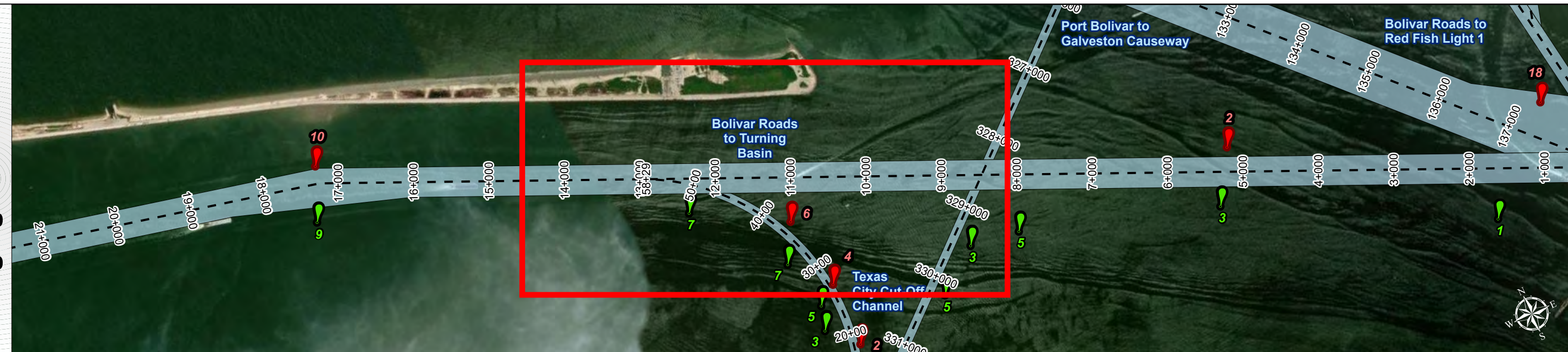
U.S. Army Corps of Engineers
Galveston District



Regional Extent



Dredging Reach Extent



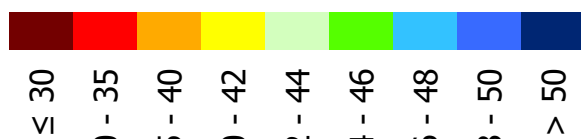
Channel Features

- Channel Center Line
- Channel Toe
- Channel Dimensions

Aids to Navigation

- Green Side Aids
- Red Side Aids
- Lights

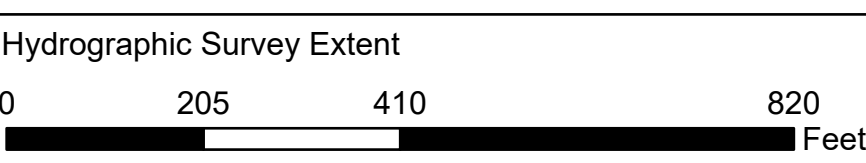
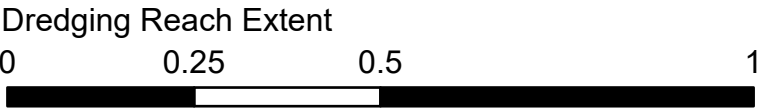
MLLW



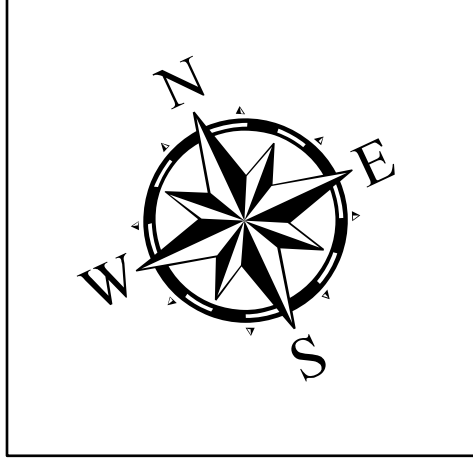
NOTES:
1. Horizontal coordinates are referenced to Texas State Plane Coordinate System, South Central Zone NAD83 US Survey Feet.
2. Elevations are referenced to Mean Lower Low Water (MLLW) datum.
3. This project was designed by the Galveston District of the U.S. Army Corps of Engineers. The initials and signatures and registration designations of individuals appear on these project documents within the scope of their employment as required by 47CFR 110.1-4102.
4. The information depicted on this survey map represents the results of surveys made on the dates indicated and can only be considered as indicating the general conditions existing at that time. These conditions are subject to rapid change due to shoaling events. A prudent mariner should not rely exclusively on the information provided here. Required by 33 CFR 209.325
5. For the most up to date information please check our website at: <http://www.svg.usace.army.mil/Missions/Navigation/HydrographicSurveys/>
Service Layer Credits: World Topographic Map: Texas Parks & Wildlife, Esri, HERE, Garmin, INCREMENT P, USGS, METINASA, NGA, EPA, USDA
World Imagery: Maxar, Microsoft
World Imagery: Maxar
World Ocean Base: Esri, GEBCO, Garmin, NaturalVue

Additional Combined Survey Dates and Stationing:
Combined surveys: 20241217_CS, 20250303_PR_0P000_34P600.

Coordinate System: NAD 1983 StatePlane Texas South Central FIPS 4204 Feet
Projection: Lambert Conformal Conic



Latest Survey Collection Date: 03 March 2025		Authorized Depth: -46ft.	
Document Page: 3 of 8		Width Range: 400ft to 700ft	
Scale: 1:2,400		Side Slope Ratio: 1:2.0 (Rise : Run)	
Mapped by: m3odnmhg		PDF Print Date: 5/23/2025	
Additional Imagery info:			



HYDROGRAPHIC SURVEY

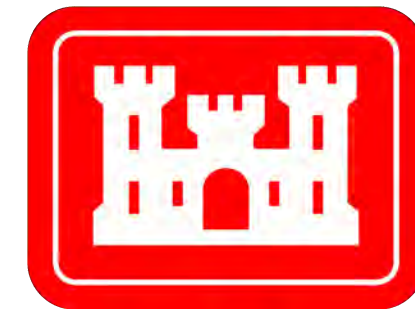
U.S. ARMY CORPS OF ENGINEERS
GALVESTON, TEXAS

Station: 0+000 to 36+200.7

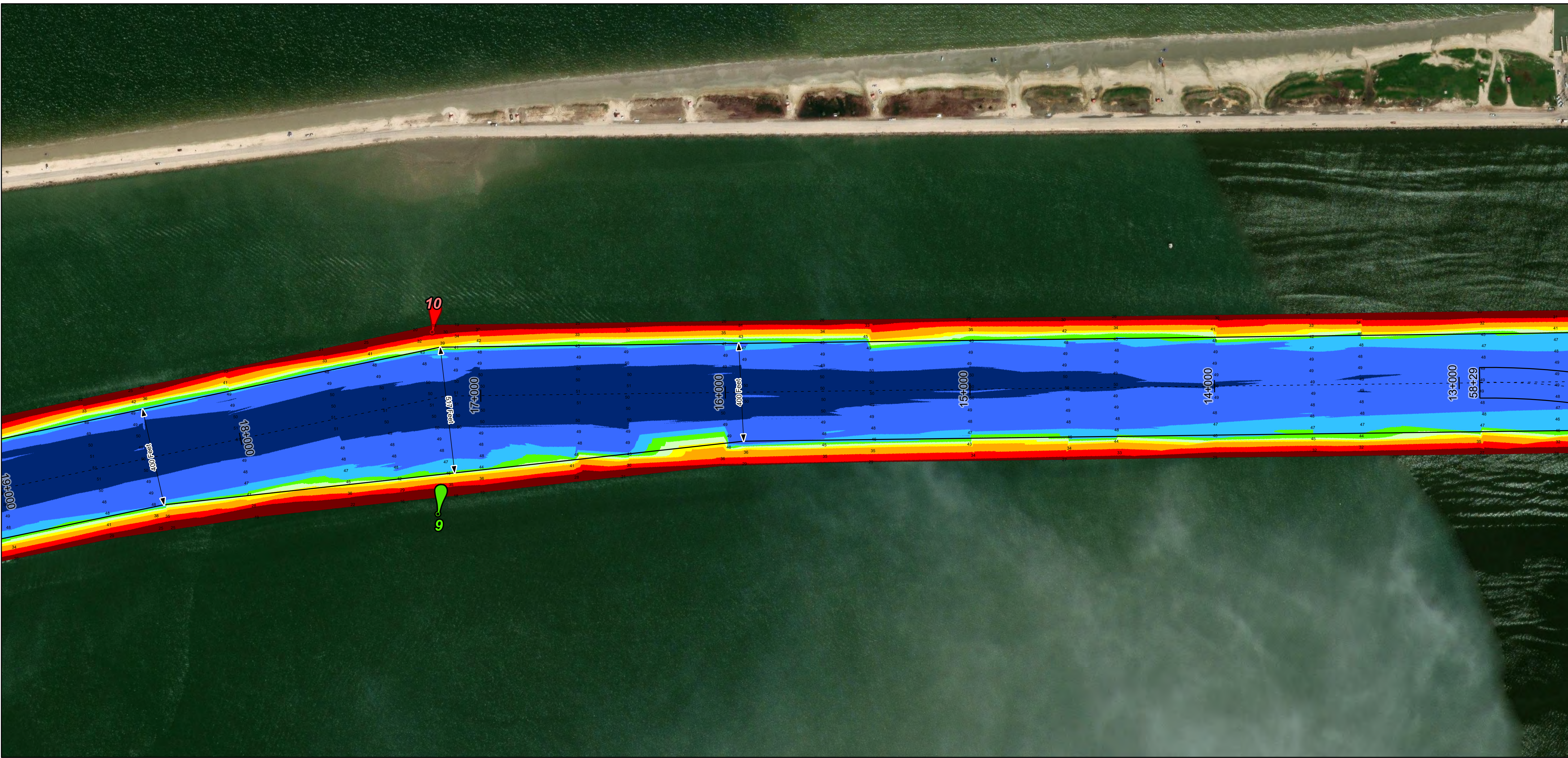
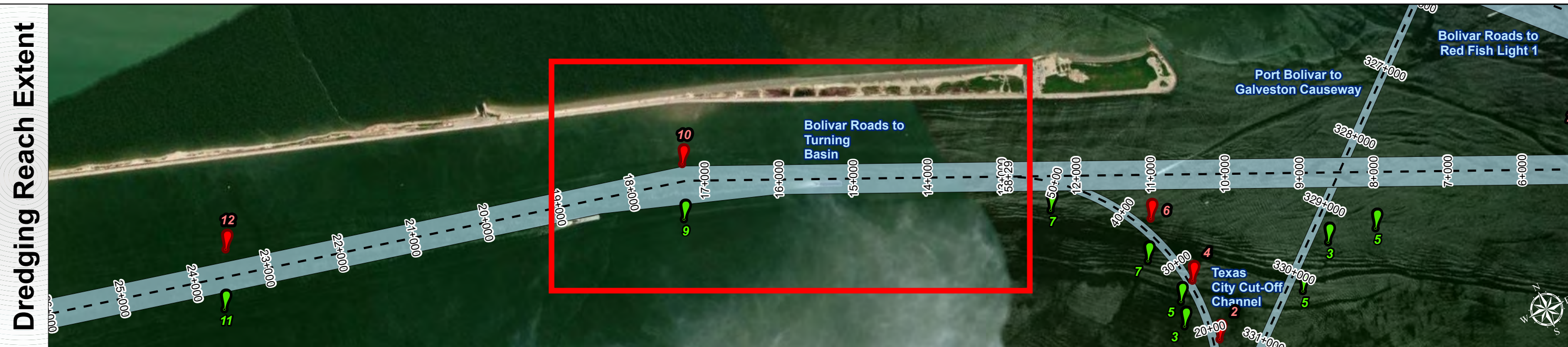
TEXAS CITY

Bolivar Roads to Turning Basin

Texas City Harbor Channel: Bolivar Roads to Turning Basin

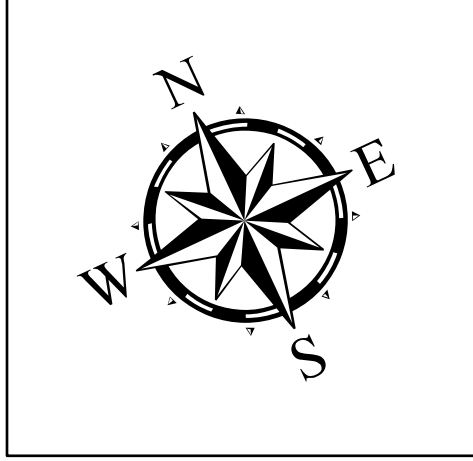


U.S. Army Corps of Engineers
Galveston District



Channel Features <ul style="list-style-type: none">Channel Center LineChannel ToeChannel Dimensions	Aids to Navigation <ul style="list-style-type: none">Green Side AidsRed Side AidsLights	MLLW 30 - 35 - 40 - 42 - 44 - 46 - 48 - 50	NOTES: <ol style="list-style-type: none">Horizontal coordinates are referenced to Texas State Plane Coordinate System, South Central Zone NAD83 US Survey Feet.Elevations are referenced to Mean Lower Low Water (MLLW) datum.This project was designed by the Galveston District of the U.S. Army Corps of Engineers. The initials and signatures and registration designations of individuals appear on these project documents within the scope of their employment as required by 47CFR 110.1-41.02.The information depicted on this survey map represents the results of surveys made on the dates indicated and can only be considered as indicating the general conditions existing at that time. These conditions are subject to rapid change due to shoaling events. A prudent mariner should not rely exclusively on the information provided here. Required by 33 CFR 209.325For the most up to date information please check our website at: http://www.swg.usace.army.mil/Missions/Navigation/HydrographicSurveys/ <p>Service Layer Credits: World Topographic Map: Texas Parks & Wildlife, Esri, HERE, Garmin, INCREMENT P, USGS, METINASA, NGA, EPA, USDA World Imagery: Maxar, Microsoft World Imagery: Maxar World Ocean Base: Esri, GEBCO, Garmin, NaturalVue</p>	Additional Combined Survey Dates and Stationing: Combined surveys: 20241217_CS, 20250303_PR_0P000_34P600.	Coordinate System: NAD 1983 StatePlane Texas South Central FIPS 4204 Feet Projection: Lambert Conformal Conic
				Dredging Reach Extent 0 0.25 0.5 1 Miles	
				Hydrographic Survey Extent 0 205 410 820 Feet	

Latest Survey Collection Date: 03 March 2025	Authorized Depth: -46ft.
Document Page: 4 of 8	Width Range: 400ft to 700ft
Scale: 1:2,400	Side Slope Ratio: 1:2.0 (Rise : Run)
Mapped by: m3odnmhg	PDF Print Date: 5/23/2025
Additional Imagery info:	



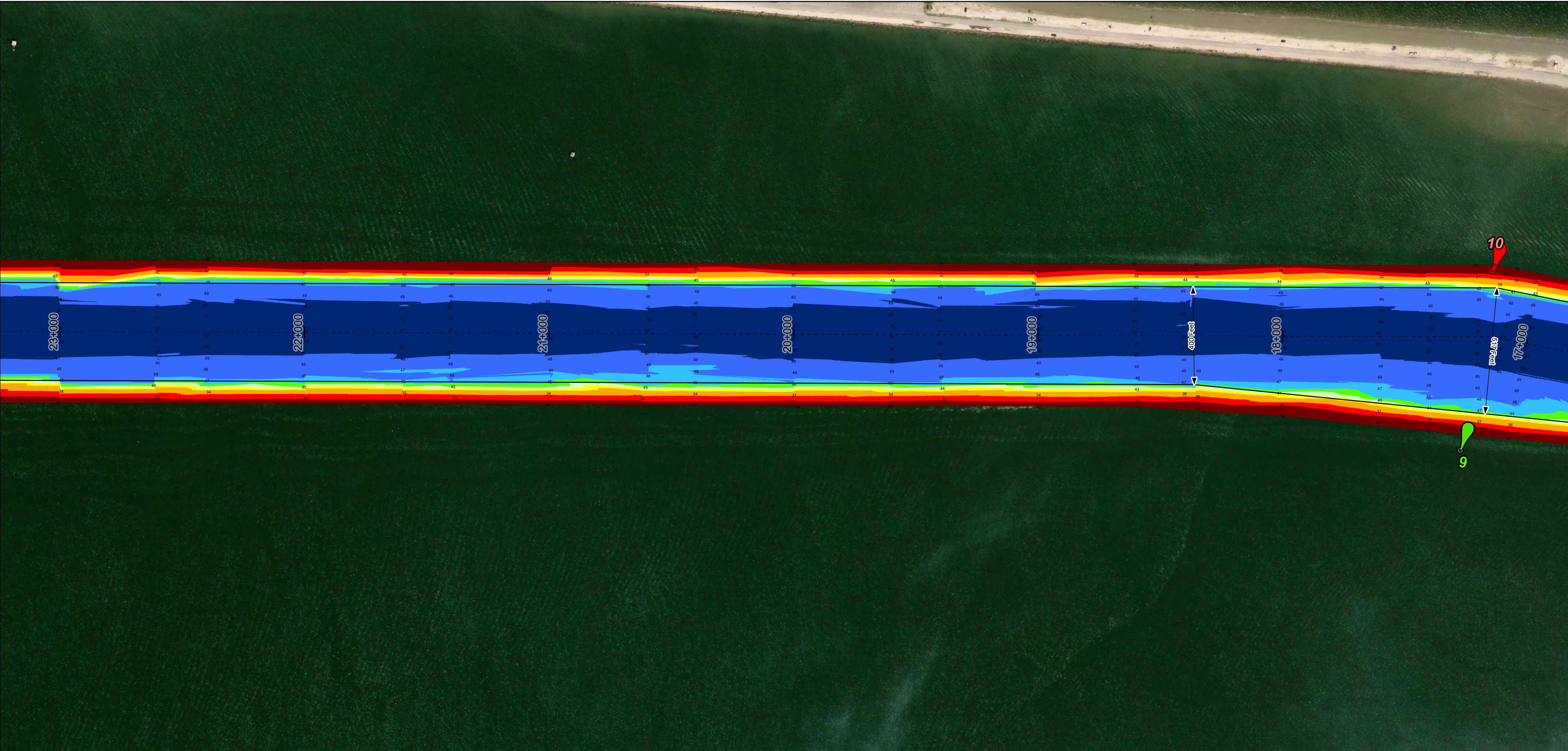
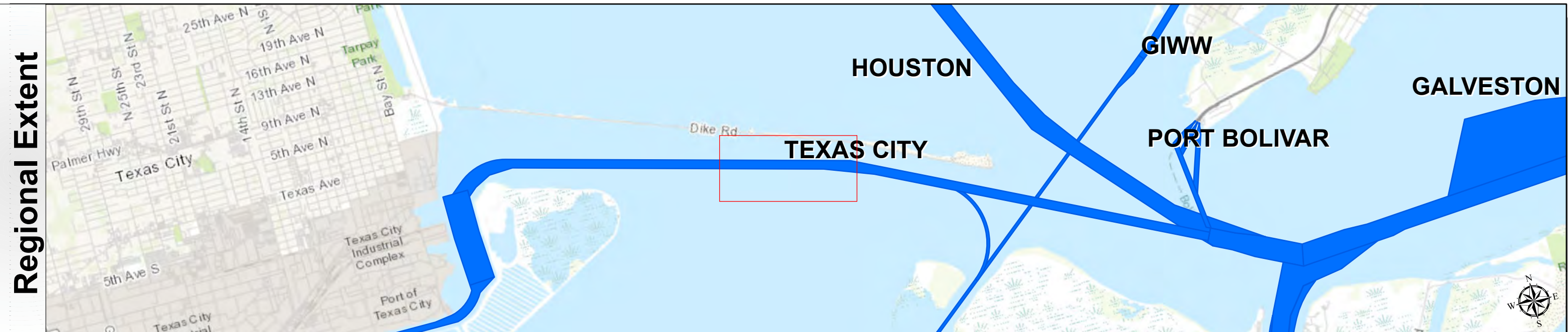
HYDROGRAPHIC SURVEY
U.S. ARMY ENGINEER DISTRICT
CORPS OF ENGINEERS
GALVESTON, TEXAS

Station: 0+000 to 36+200.7
TEXAS CITY
Bolivar Roads to Turning Basin

Texas City Harbor Channel: Bolivar Roads to Turning Basin



U.S. Army Corps of Engineers
Galveston District



Channel Features

- Channel Center Line
- Channel Toe
- Channel Dimensions

Aids to Navigation

- Green Side Aids
- Red Side Aids
- Lights

MLLW

≤ 30	30 - 35	35 - 40	40 - 42	42 - 44	44 - 46	46 - 48	48 - 50	> 50
Red	Orange	Yellow	Light Green	Green	Dark Green	Blue	Dark Blue	Black

NOTES:
1. Horizontal coordinates are referenced to Texas State Plane Coordinate System, South Central Zone NAD83 US Survey Feet.
2. Elevations are referenced to Mean Lower Low Water (MLLW) datum.
3. This project was designed by the Galveston District of the U.S. Army Corps of Engineers. The initials and signatures and registration designations of individuals appear on these project documents within the scope of their employment as required by 47CFR 110.1-41.02.
4. The information depicted on this survey map represents the results of surveys made on the dates indicated and can only be considered as indicating the general conditions existing at that time. These conditions are subject to rapid change due to shoaling events. A prudent mariner should not rely exclusively on the information provided here. Required by 33 CFR 209.325
5. For the most up to date information please check our website at: <http://www.usace.army.mil/Missions/Navigation/HydrographicSurveys/>
Service Layer Credits: World Topographic Map: Texas Parks & Wildlife, Esri, HERE, Garmin, INCREMENT P, USGS, METINASA, NGA, EPA, USDA
World Imagery: Maxar, Microsoft
World Imagery: Maxar
World Ocean Base: Esri, GEBCO, Garmin, NaturalVue

Additional Combined Survey Dates and Stationing:
Combined surveys: 20241217_CS, 20250303_PR_0P000_34P600.

Coordinate System: NAD 1983 StatePlane Texas South Central FIPS 4204 Feet
Projection: Lambert Conformal Conic

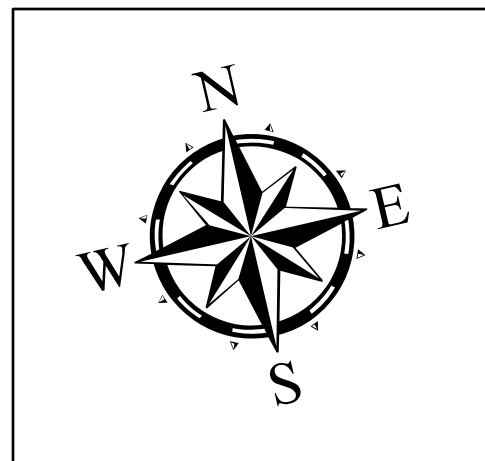
Dredging Reach Extent

0	0.25	0.5	1
Miles			

Hydrographic Survey Extent

0	205	410	820
Feet			

Latest Survey Collection Date: 03 March 2025		Authorized Depth: -46ft.
Document Page: 5 of 8	Website Index Number: 5	Width Range: 400ft to 700ft
Scale: 1:2,400		Side Slope Ratio: 1:2.0 (Rise : Run)
Mapped by: m3odnmhg		PDF Print Date: 5/23/2025
Additional Imagery info:		



HYDROGRAPHIC SURVEY
U.S. ARMY ENGINEER DISTRICT
CORPS OF ENGINEERS
GALVESTON, TEXAS

Station: 0+000 to 36+200.7
TEXAS CITY
Bolivar Roads to Turning Basin

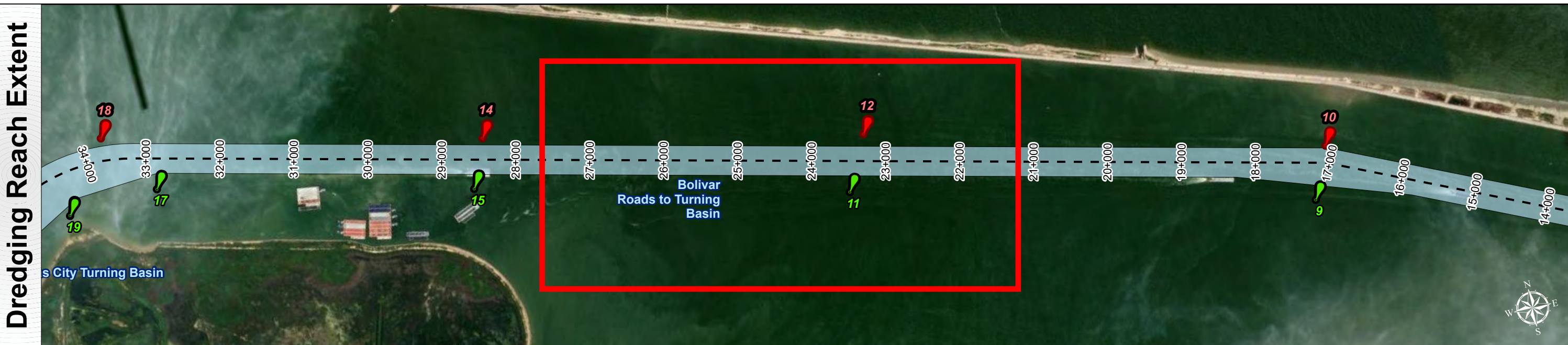
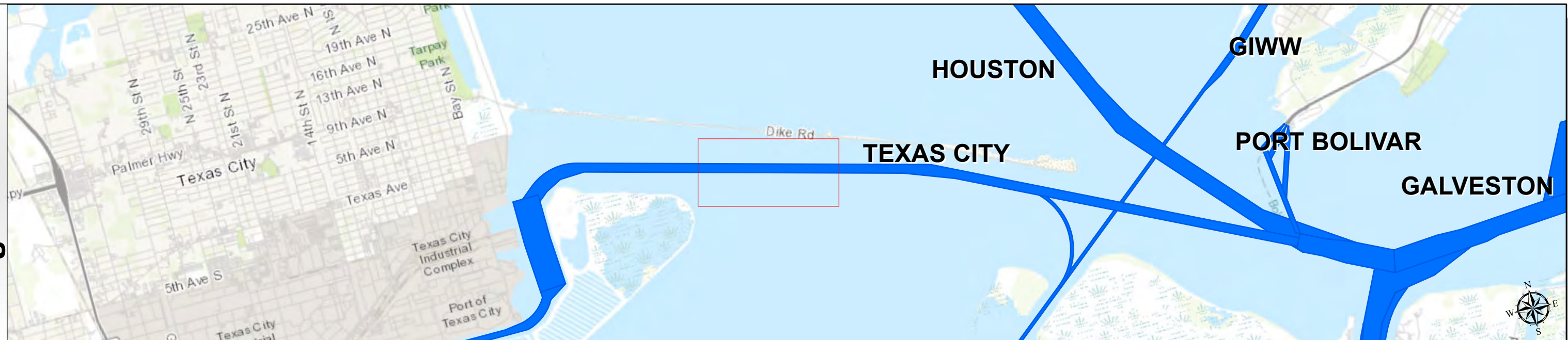
Texas City Harbor Channel: Bolivar Roads to Turning Basin



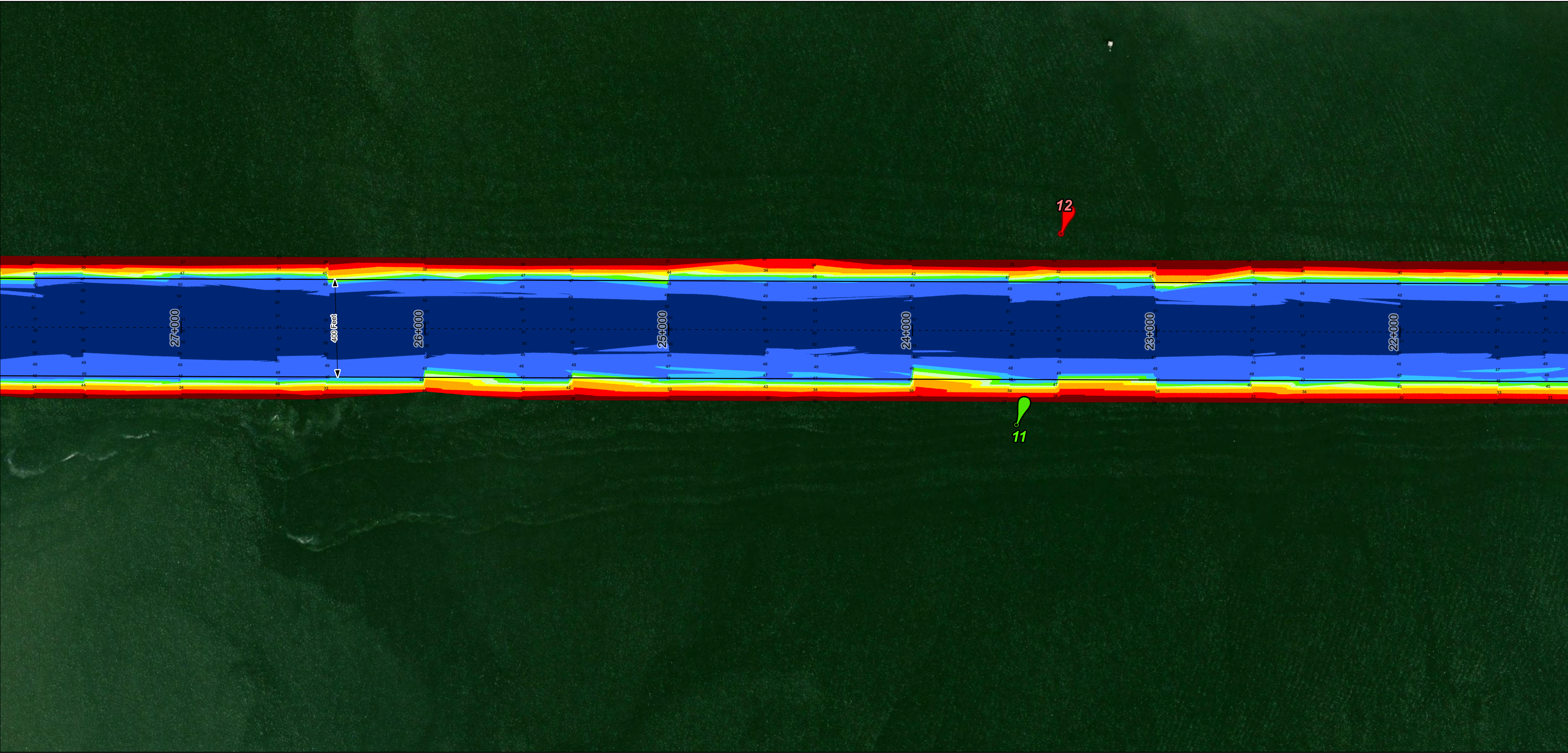
U.S. Army Corps of Engineers
Galveston District



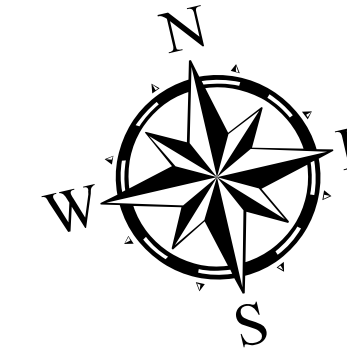
Regional Extent



Dredging Reach Extent



Latest Survey Collection Date: 03 March 2025	Authorized Depth: -46ft.
Document Page: 6 of 8	Width Range: 400ft to 700ft
Scale: 1:2,400	Side Slope Ratio: 1:2.0 (Rise : Run)
Mapped by: m3odnmhg	PDF Print Date: 5/23/2025
Additional Imagery info:	



HYDROGRAPHIC SURVEY
U.S. ARMY ENGINEER DISTRICT
CORPS OF ENGINEERS
GALVESTON, TEXAS
Station: 0+000 to 36+200.7
Bolivar Roads to Turning Basin

Channel Features

- Channel Center Line
- Channel Toe
- Channel Dimensions

Aids to Navigation

- Green Side Aids
- Red Side Aids
- Lights

MLLW

30 35 40 42 44 46 48 50

NOTES:

1. Horizontal coordinates are referenced to Texas State Plane Coordinate System, South Central Zone NAD83 US Survey Feet.

2. Elevations are referenced to Mean Lower Low Water (MLLW) datum.

3. This project was designed by the Galveston District of the U.S. Army Corps of Engineers. The initials and signatures and registration designations of individuals appear on these project documents within the scope of their employment as required by er1110-1-8102.

4. The information depicted on this survey map represents the results of surveys made on the dates indicated and can only be considered as indicating the general conditions existing at that time. These conditions are subject to rapid change due to shoaling events. A prudent mariner should not rely exclusively on the information provided here. Required by 33 CFR 209.325

5. For the most up to date information please check our website at: <http://www.svg.usace.army.mil/Missions/Navigation/HydrographicSurveys/>

Service Layer Credits: World Topographic Map: Texas Parks & Wildlife, Esri, HERE, Garmin, INCREMENT P, USGS, METINASA, NGA, EPA, USDA
World Imagery: Maxar, Microsoft
World Imagery: Maxar
World Ocean Base: Esri, GEBCO, Garmin, NaturalVue

Additional Combined Survey Dates and Stationing:

Combined surveys: 20241217_CS, 20250303_PR_0P000_34P600.

Coordinate System: NAD 1983 StatePlane Texas South Central FIPS 4204 Feet
Projection: Lambert Conformal Conic

Dredging Reach Extent

0 0.25 0.5 1 Miles

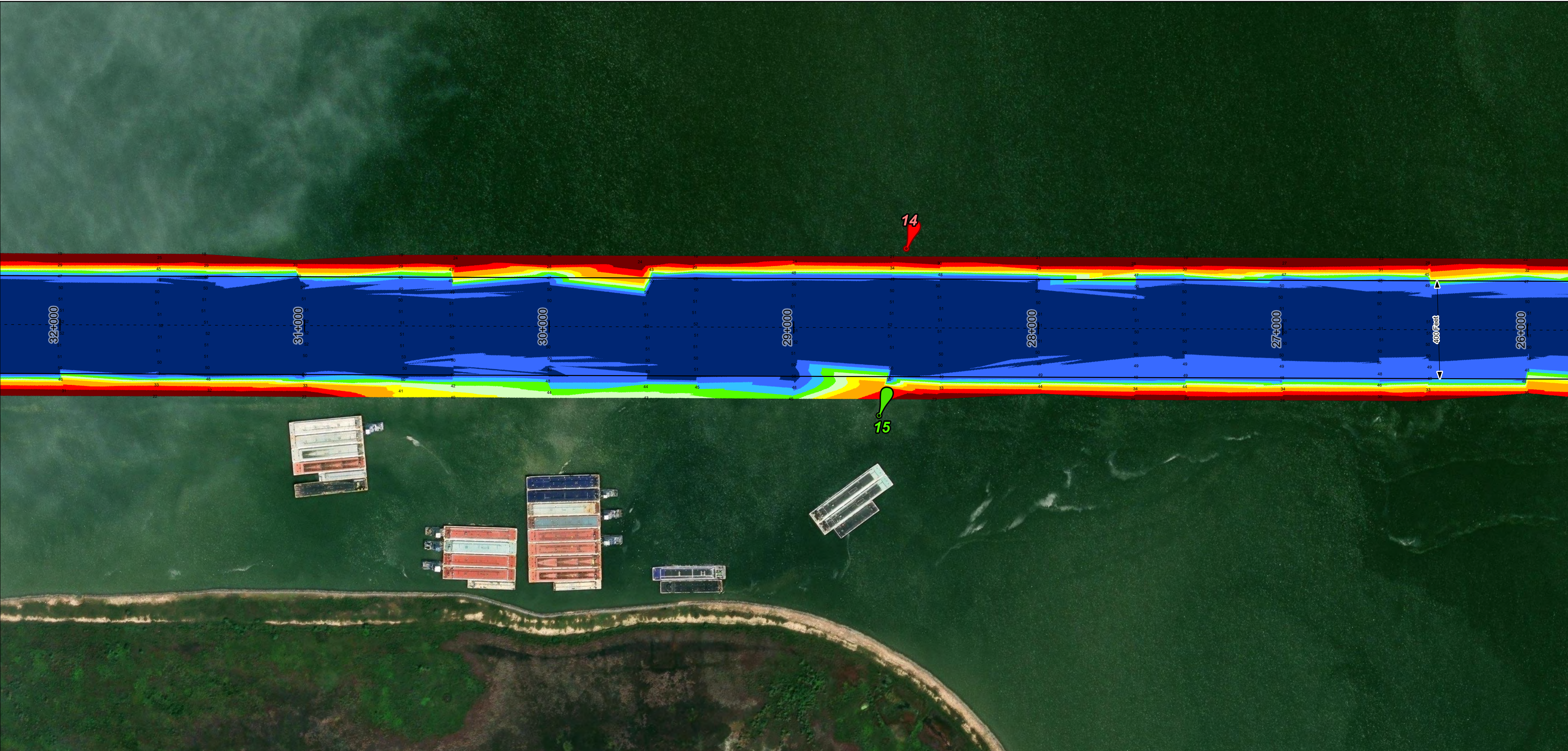
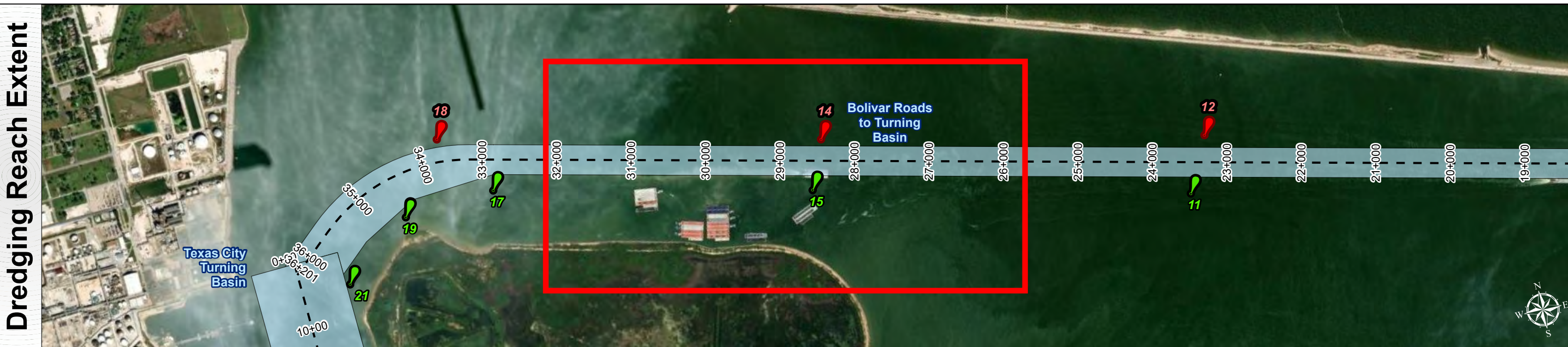
Hydrographic Survey Extent

0 205 410 820 Feet

Texas City Harbor Channel: Bolivar Roads to Turning Basin



U.S. Army Corps of Engineers
Galveston District



Channel Features

- Channel Center Line
- Channel Toe
- Channel Dimensions

Aids to Navigation

- Green Side Aids
- Red Side Aids
- Lights

MLLW

30 35 40 42 44 46 48 50

NOTES:

- Horizontal coordinates are referenced to Texas State Plane Coordinate System, South Central Zone NAD83 US Survey Feet.
- Elevations are referenced to Mean Lower Low Water (MLLW) datum.
- This project was designed by the Galveston District of the U.S. Army Corps of Engineers. The initials and signatures and registration designations of individuals appear on these project documents within the scope of their employment as required by 47CFR 117.1-41.02.
- The information depicted on this survey map represents the results of surveys made on the dates indicated and can only be considered as indicating the general conditions existing at that time. These conditions are subject to rapid change due to shoaling events. A prudent mariner should not rely exclusively on the information provided here. Required by 33 CFR 209.325
- For the most up to date information please check our website at: <http://www.usace.army.mil/Missions/Navigation/HydrographicSurveys/>

Service Layer Credits: World Topographic Map: Texas Parks & Wildlife, Esri, HERE, Garmin, INCREMENT P, USGS, METINASA, NGA, EPA, USDA
World Imagery: Maxar, Microsoft
World Imagery: Maxar
World Ocean Base: Esri, GEBCO, Garmin, NaturalVue

Additional Combined Survey Dates and Stationing:

Combined surveys: 20241217_CS, 20250303_PR_0P000_34P600.

Coordinate System: NAD 1983 StatePlane Texas South Central FIPS 4204 Feet
Projection: Lambert Conformal Conic

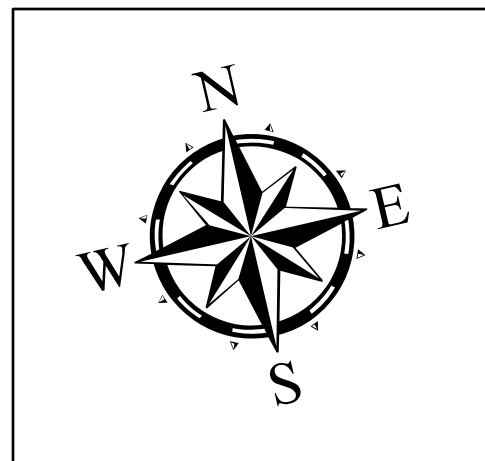
Dredging Reach Extent

0 0.25 0.5 1 Miles

Hydrographic Survey Extent

0 205 410 820 Feet

Latest Survey Collection Date: 03 March 2025		Authorized Depth: -46ft.
Document Page: 7 of 8	Website Index Number: 7	Width Range: 400ft to 700ft
Scale: 1:2,400		Side Slope Ratio: 1:2.0 (Rise : Run)
Mapped by: m3odnmhg		PDF Print Date: 5/23/2025
Additional Imagery info:		



HYDROGRAPHIC SURVEY

U.S. ARMY ENGINEER DISTRICT
CORPS OF ENGINEERS
GALVESTON, TEXAS

Station: 0+000 to 36+200.7

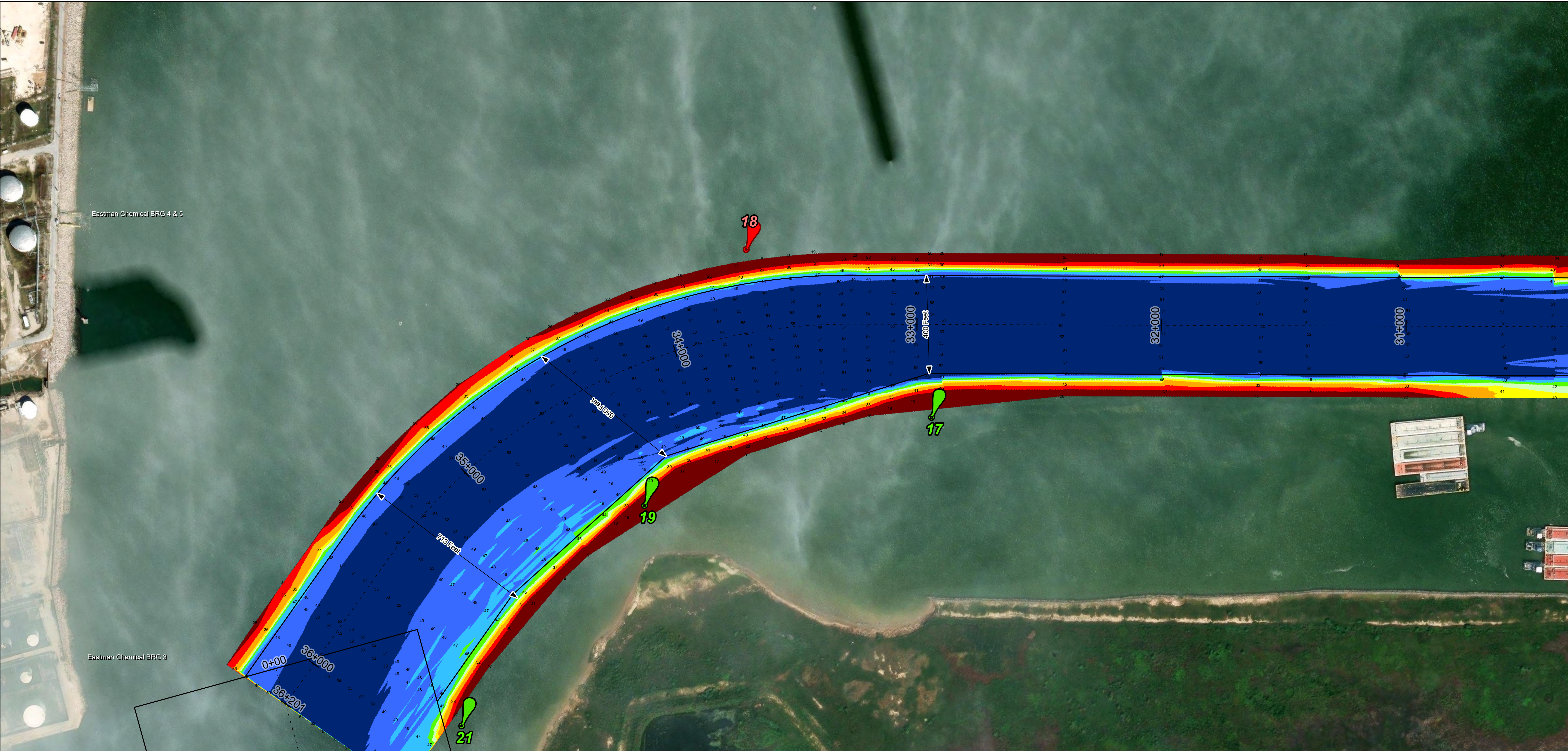
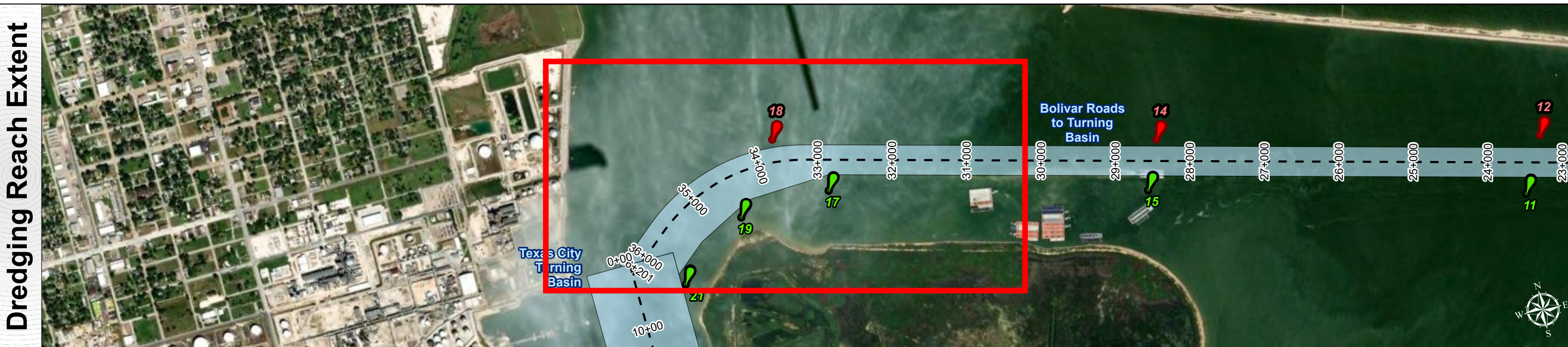
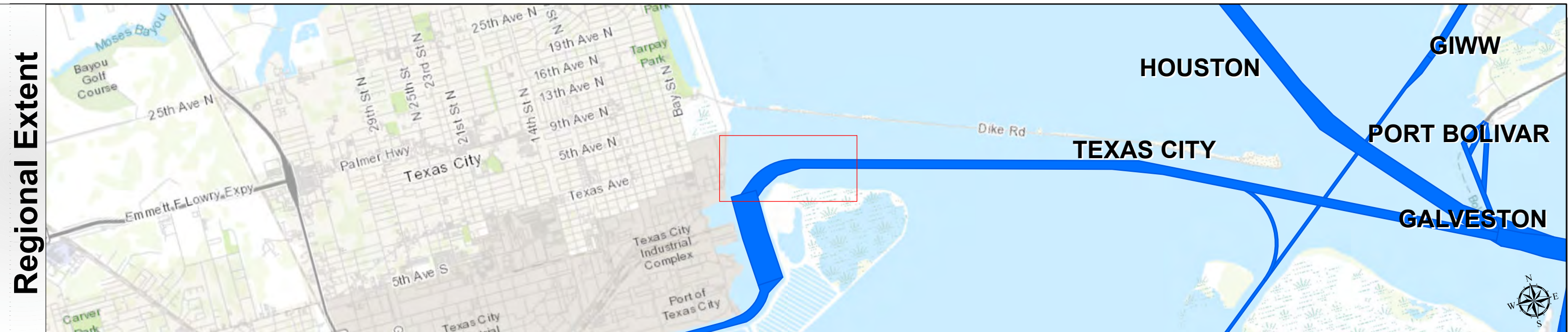
TEXAS CITY

Bolivar Roads to Turning Basin

Texas City Harbor Channel: Bolivar Roads to Turning Basin



U.S. Army Corps of Engineers
Galveston District



Channel Features

- Channel Center Line
- Channel Toe
- Channel Dimensions

Aids to Navigation

- Green Side Aids
- Red Side Aids
- Lights

MLLW

30 35 40 42 44 46 48 50

NOTES:

- Horizontal coordinates are referenced to Texas State Plane Coordinate System, South Central Zone NAD83 US Survey Feet.
- Elevations are referenced to Mean Lower Low Water (MLLW) datum.
- This project was designed by the Galveston District of the U.S. Army Corps of Engineers. The initials and signatures and registration designations of individuals appear on these project documents within the scope of their employment as required by 47CFR 110.1-41.02.
- The information depicted on this survey map represents the results of surveys made on the dates indicated and can only be considered as indicating the general conditions existing at that time. These conditions are subject to rapid change due to shoaling events. A prudent mariner should not rely exclusively on the information provided here. Required by 33 CFR 209.325
- For the most up to date information please check our website at: <http://www.svg.usace.army.mil/Missions/Navigation/HydrographicSurveys/>

Service Layer Credits: World Topographic Map: Texas Parks & Wildlife, Esri, HERE, Garmin, INCREMENT P, USGS, METINASA, NGA, EPA, USDA
World Imagery: Maxar, Microsoft
World Imagery: Maxar
World Ocean Base: Esri, GEBCO, Garmin, NaturalVue

Additional Combined Survey Dates and Stationing:

Combined surveys: 20241217_CS, 20250303_PR_0P000_34P600.

Coordinate System: NAD 1983 StatePlane Texas South Central FIPS 4204 Feet
Projection: Lambert Conformal Conic

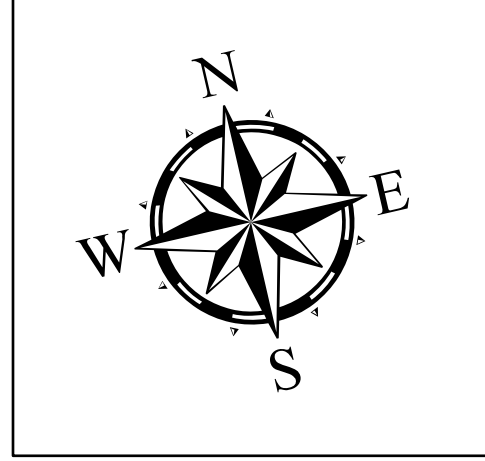
Dredging Reach Extent

0 0.25 0.5 1 Miles

Hydrographic Survey Extent

0 205 410 820 Feet

Latest Survey Collection Date: 03 March 2025	Authorized Depth: -46ft.
	Width Range: 400ft to 700ft
Document Page: 8 of 8	Side Slope Ratio: 1:2.0 (Rise : Run)
Scale: 1:2,400	PDF Print Date: 5/23/2025
Mapped by: m3odnmhg	
Additional Imagery info:	



HYDROGRAPHIC SURVEY

U.S. ARMY CORPS OF ENGINEERS
GALVESTON, TEXAS

Station: 0+000 to 36+200.7

TEXAS CITY

Bolivar Roads to Turning Basin