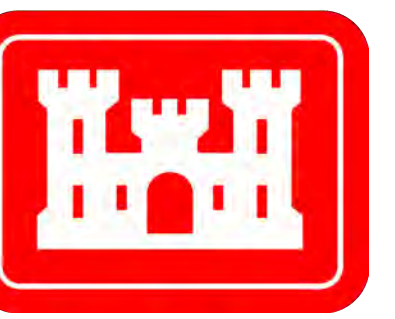
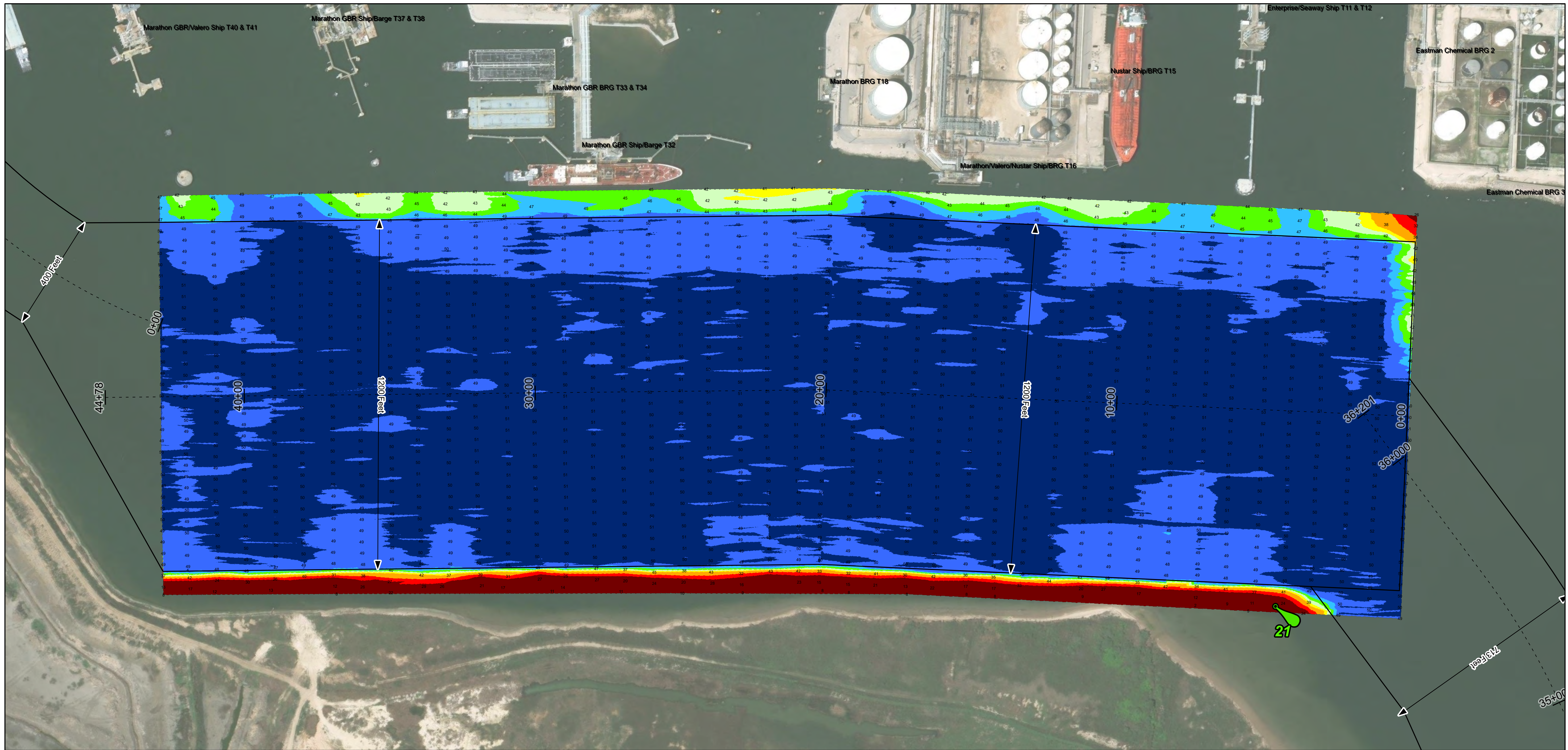
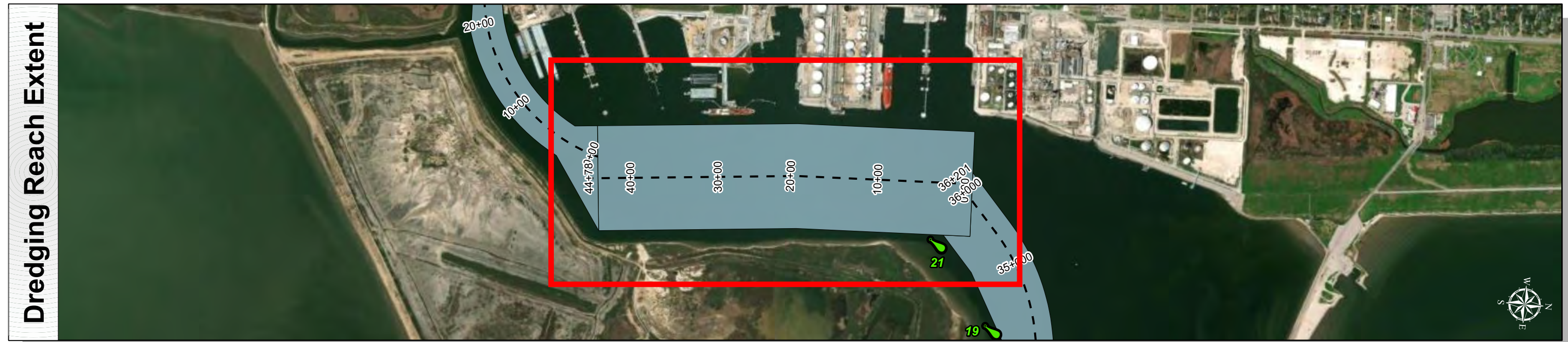
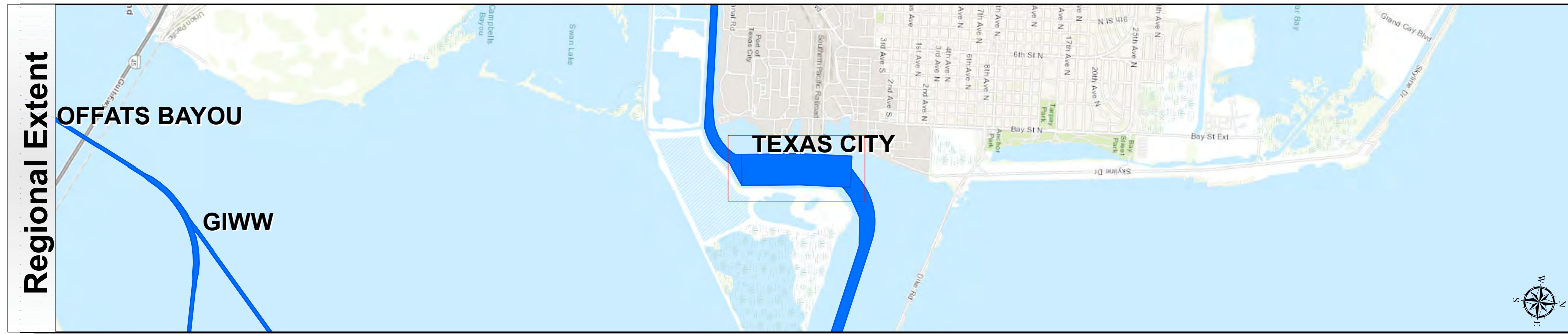


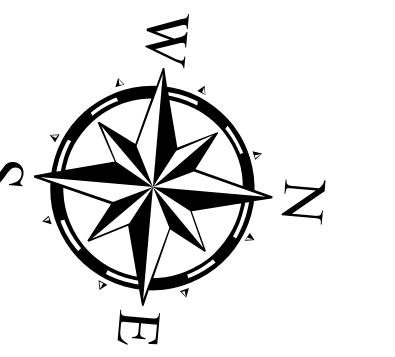
# Texas City Harbor Channel: Texas City Turning Basin



U.S. Army Corps of Engineers  
Galveston District



Authorized Depth: -46ft.	Latest Survey Collection Date: 13 March 2026
Width Range: 1200ft to 1200ft	Document Page: 1 of 1
Side Slope Ratio: 1:2.0 (Rise : Run)	Scale: 1:2,000
PDF Print Date: 3/18/2026	Website Index Number: 9
	Mapped by: m3odnmhg
	Additional Imagery info:



Channel Features	Aids to Navigation
- - - Channel Center Line	Green Side Aids
— Channel Toe	Red Side Aids
↔ Channel Dimensions	Lights



NOTES:  
 1. Horizontal coordinates are referenced to Texas State Plane Coordinate System, South Central Zone NAD83 US Survey Feet.  
 2. Elevations are referenced to Mean Lower Low Water (MLLW) datum.  
 3. This project was designed by the Galveston District of the U.S. Army Corps of Engineers. The initials and signatures and registration designations of individuals appear on these project documents within the scope of their employment as required by er1110-1-8132.  
 4. The information depicted on this survey map represents the results of surveys made on the dates indicated and can only be considered as indicating the general conditions existing at that time. These conditions are subject to rapid change due to shoaling events. A prudent mariner should not rely exclusively on the information provided here. Required by 33 CFR 209.325.  
 5. For the most up to date information please check our website at: <http://www.usace.army.mil/Missions/Navigation/HydrographicSurveys/>  
 Service Layer Credits: World Topographic Map: Texas Parks & Wildlife, Esri, HERE, Garmin, INCREMENT P, USGS, METINASA, NGA, EPA, USDA  
 World Imagery: Microsoft, Vantor  
 World Imagery: Vantor  
 World Ocean Base: Esri, GEBCO, Garmin, NaturalVue

Additional Combined Survey Dates and Stationing:  
 COMB\_SURV\_INFO\_HERE

Coordinate System: NAD 1983 StatePlane Texas South Central FIPS 4204 Feet  
 Projection: Lambert Conformal Conic

**HYDROGRAPHIC SURVEY**  
 U.S. ARMY ENGINEER DISTRICT  
 CORPS OF ENGINEERS  
 GALVESTON, TEXAS  
**Station: 1+54.3 to 43+81.09**  
 Texas City Turning Basin