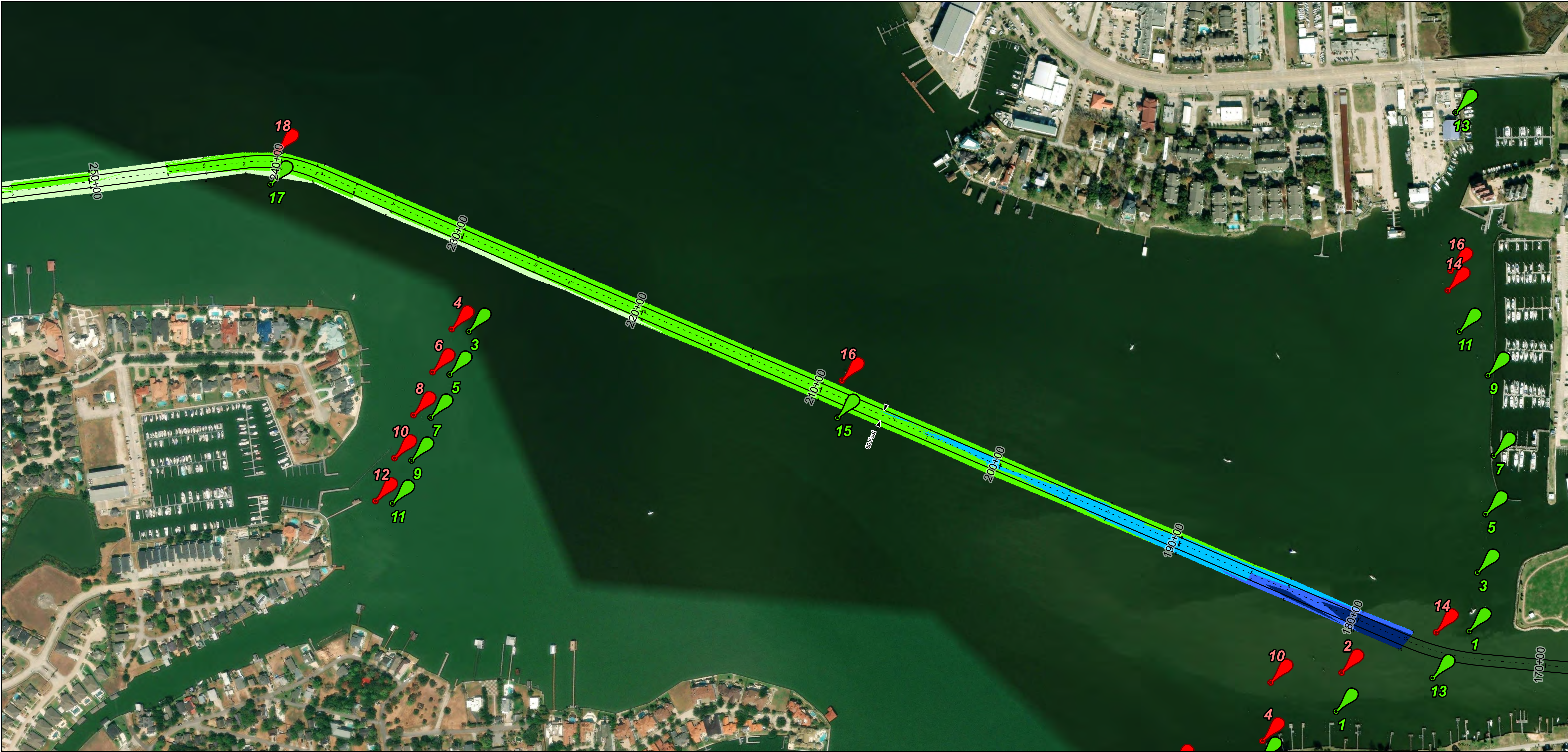
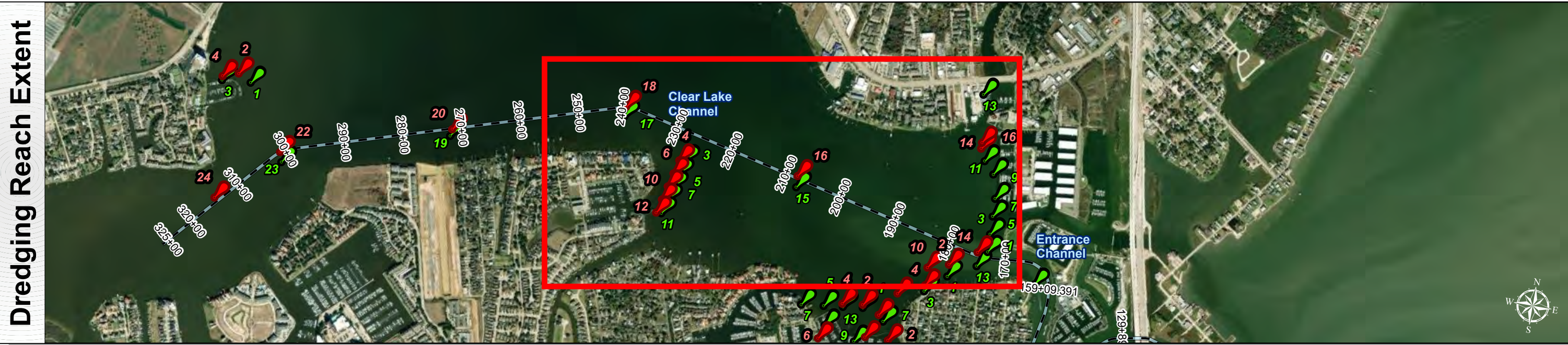


Clear Lake: Clear Lake Channel



U.S. Army Corps of Engineers
Galveston District





Channel Features

- Channel Center Line
- Channel Toe
- Channel Dimensions

Aids to Navigation

- Green Side Aids
- Red Side Aids
- Lights

MLLW

<1	1-2	2-3	3-4	4-6	6-8	8-10	10-12	>12
Red	Orange	Yellow	Light Green	Green	Dark Green	Blue	Dark Blue	Black

NOTES:

- Horizontal coordinates are referenced to Texas State Plane Coordinate System, South Central Zone NAD83 US Survey Feet.
- Elevations are referenced to Mean Lower Low Water (MLLW) datum.
- This project was designed by the Galveston District of the U.S. Army Corps of Engineers. The initials and signatures and registration designations of individuals appear on these project documents within the scope of their employment as required by 47CFR 110.1-41.02.
- The information depicted on this survey map represents the results of surveys made on the dates indicated and can only be considered as indicating the general conditions existing at that time. These conditions are subject to rapid change due to shoaling events. A prudent mariner should not rely exclusively on the information provided here. Required by 33 CFR 209.325
- For the most up to date information please check our website at: <http://www.svg.usace.army.mil/Missions/Navigation/HydrographicSurveys/>

Service Layer Credits: World Imagery: Source: Esri, Maxar, Earthstar Geographics, and the GIS User Community
World Topographic Map: City of Houston, HPB, Texas Parks & Wildlife, Esri, HERE, Garmin, INCREMENT P, USGS, METINASA, NGA, EPA, USDA
World Ocean Base: Esri, GEBCO, Garmin, NaturalVue

Additional Combined Survey Dates and Stationing:
COMB_SURV_INFO_HERE

Coordinate System: NAD 1983 StatePlane Texas South Central FIPS 4204 Feet
Projection: Lambert Conformal Conic

Dredging Reach Extent

0 0.3 0.6 1.2 Miles

Hydrographic Survey Extent

0 255 510 1,020 Feet

HYDROGRAPHIC SURVEY
U.S. ARMY CORPS OF ENGINEERS
GALVESTON, TEXAS

Station: 177+33.302 to 325+00
CLEAR LAKE
Clear Lake Channel

Latest Survey Collection Date: 15 April 2025

Document Page: 1 of 2

Scale: 1:3,000

Mapped by: M3AOXPAC

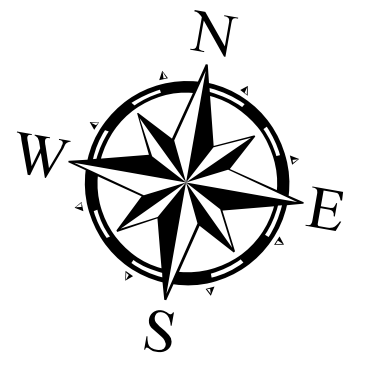
Additional Imagery info:

Authorized Depth: -8ft.

Width Range: 60ft to 60ft

Side Slope Ratio: (Rise : Run)

PDF Print Date: 5/1/2025



Clear Lake: Clear Lake Channel



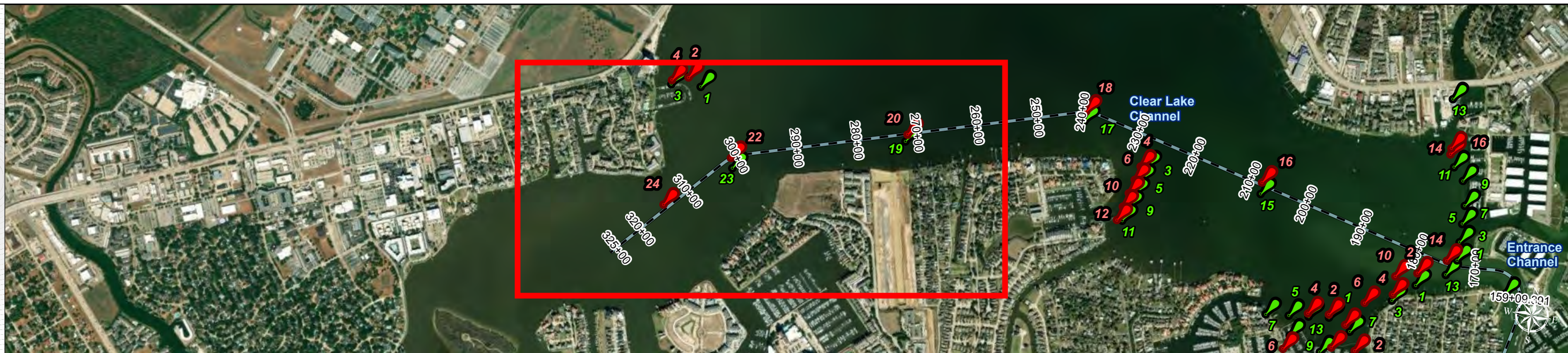
U.S. Army Corps of Engineers
Galveston District



Regional Extent



Dredging Reach Extent



Channel Features

- Channel Center Line
- Channel Toe
- Channel Dimensions

Aids to Navigation

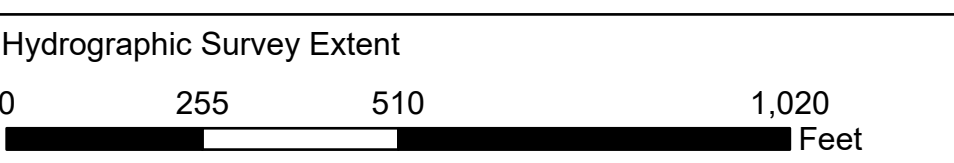
- Green Side Aids
- Red Side Aids
- Lights



NOTES:
1. Horizontal coordinates are referenced to Texas State Plane Coordinate System, South Central Zone NAD83 US Survey Feet.
2. Elevations are referenced to Mean Lower Low Water (MLLW) datum.
3. This project was designed by the Galveston District of the U.S. Army Corps of Engineers. The initials and signatures and registration designations of individuals appear on these project documents within the scope of their employment as required by 47CFR 110.1-41.02.
4. The information depicted on this survey map represents the results of surveys made on the dates indicated and can only be considered as indicating the general conditions existing at that time. These conditions are subject to rapid change due to shoaling events. A prudent mariner should not rely exclusively on the information provided here. Required by 33 CFR 209.325
5. For the most up to date information please check our website at: <http://www.svg.usace.army.mil/Missions/Navigation/HydrographicSurveys/>
Service Layer Credits: World Imagery: Source: Esri, Maxar, Earthstar Geographics, and the GIS User Community
World Topographic Map: City of Houston, HPB, Brazoria County, Texas Parks & Wildlife, Esri, HERE, Garmin, INCREMENT P, USGS, METINASA, NGA, EPA, USDA
World Ocean Base: Esri, GEBCO, Garmin, NaturalVue

Additional Combined Survey Dates and Stationing:
COMB_SURV_INFO_HERE

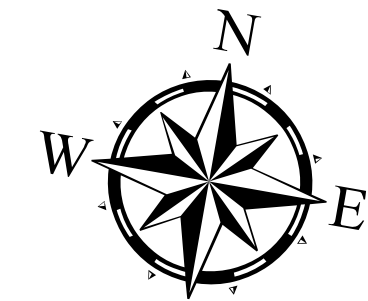
Coordinate System: NAD 1983 StatePlane Texas South Central FIPS 4204 Feet
Projection: Lambert Conformal Conic



HYDROGRAPHIC SURVEY

U.S. ARMY ENGINEER DISTRICT
CORPS OF ENGINEERS
GALVESTON, TEXAS

Station: 177+33.302 to 325+00
CLEAR LAKE
Clear Lake Channel



Latest Survey Collection Date: 15 April 2025

Document Page: 2 of 2

Website Index Number: 4

Scale: 1:3,000

Mapped by: M3AOXPAC

Additional Imagery info:

Authorized Depth: -8ft.

Width Range: 60ft to 60ft

Side Slope Ratio: (Rise : Run)

PDF Print Date: 5/1/2025