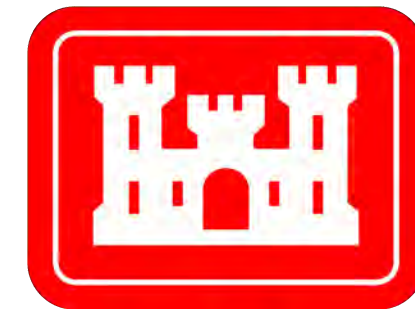
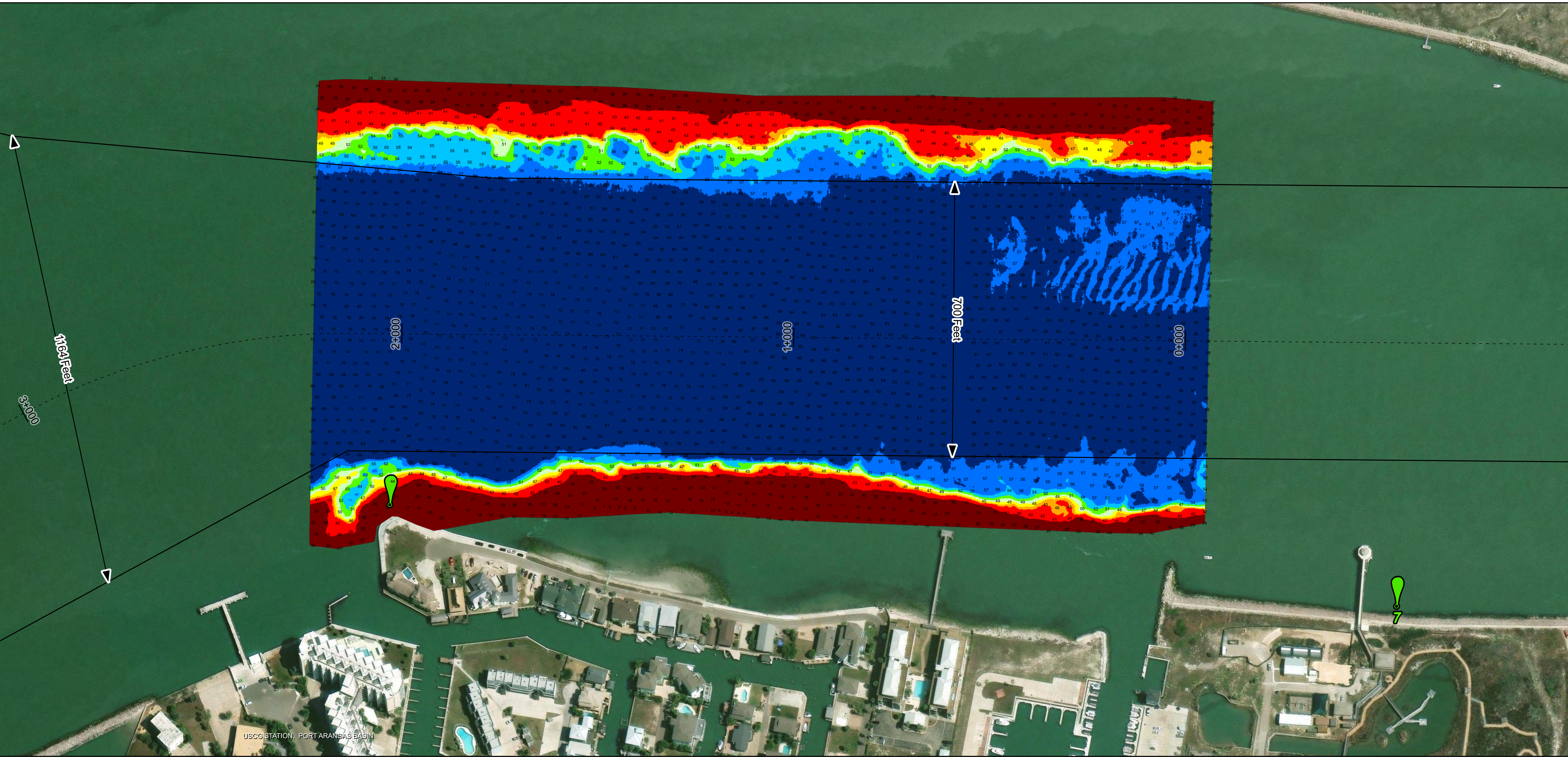
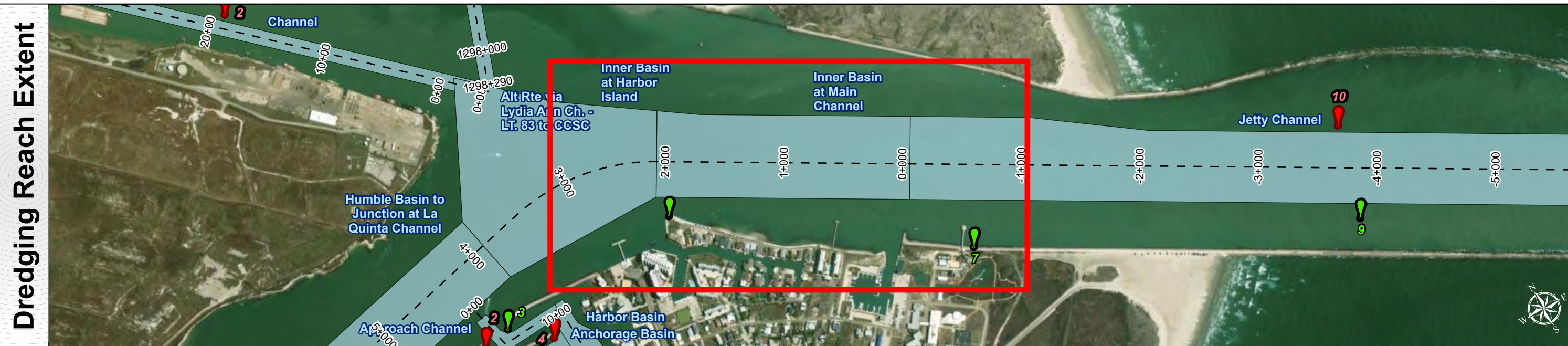


# Corpus Christi Ship Channels: Inner Basin at Main Channel



U.S. Army Corps of Engineers  
Galveston District



Channel Features
--- Channel Center Line
— Channel Toe
↔ Channel Dimensions

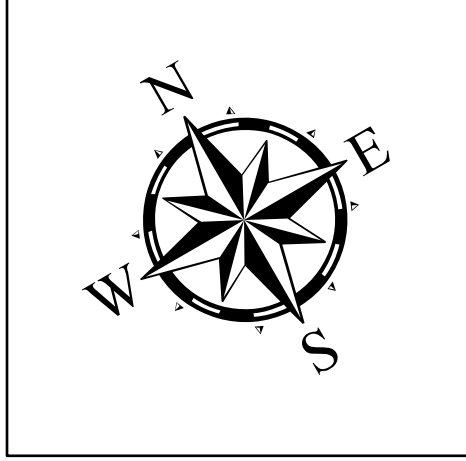
Aids to Navigation
Green Side Aids
Red Side Aids
Lights

MLLW
< 40
40 - 46
46 - 48
48 - 50
50 - 52
52 - 54
54 - 56
56 - 58
> 58

Channel Features
--- Channel Center Line
— Channel Toe
↔ Channel Dimensions

Channel Features
--- Channel Center Line
— Channel Toe
↔ Channel Dimensions

Authorized Depth: -54ft.	Latest Survey Collection Date: 13 June 2025
Width Range: 700ft to 700ft	Document Page: 1 of 1
Side Slope Ratio: 1:3 (Rise : Run)	Website Index Number: 6
PDF Print Date: 6/16/2025	Scale: 1:1,500
	Mapped by: m3odnmhg
	Additional Imagery info:



HYDROGRAPHIC SURVEY

U.S. ARMY ENGINEER DISTRICT

CORPS OF ENGINEERS

GALVESTON, TEXAS

Station: 0+000 to 2+136.61

CORPUS CHRISTI

Inner Basin at Main Channel