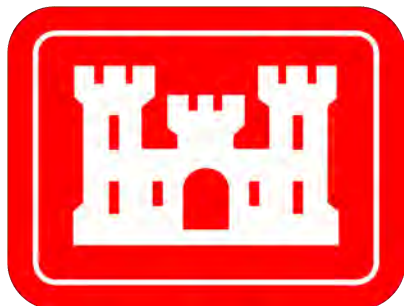
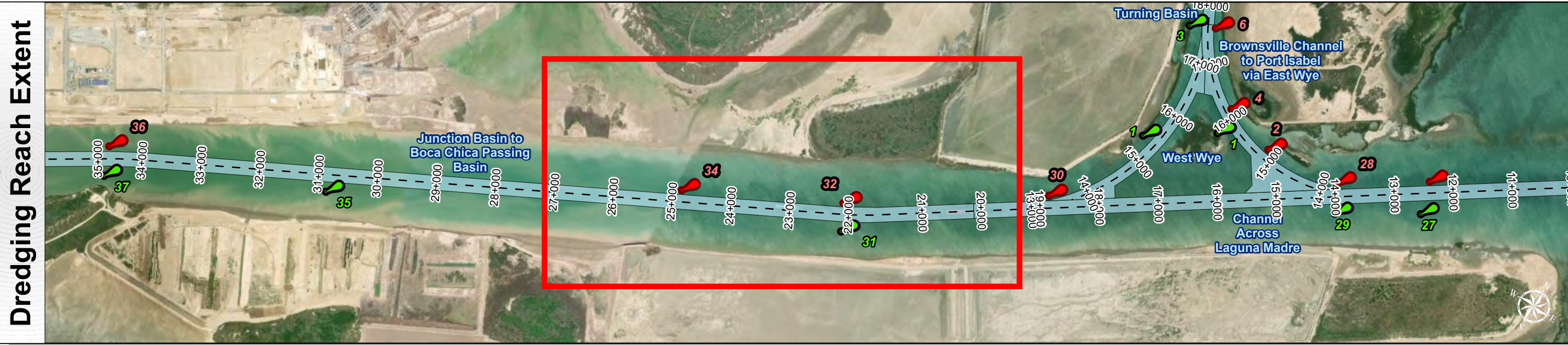
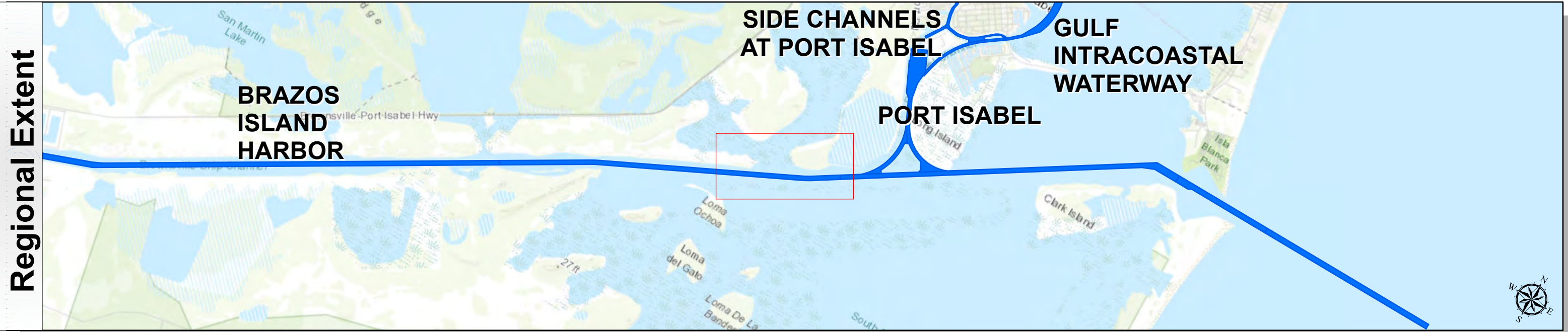


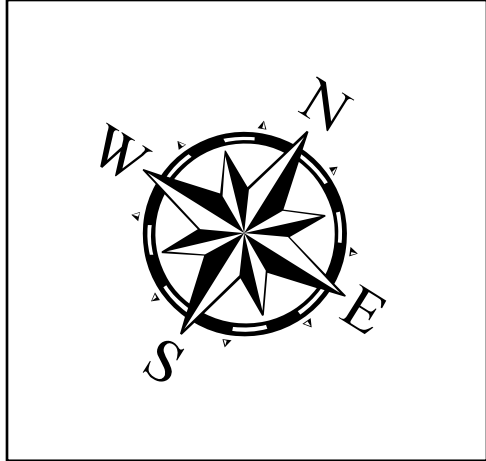
Brazos Island Harbor: Junction Basin to Boca Chica Passing Basin



U.S. Army Corps of Engineers
Galveston District



Latest Survey Collection Date: 26 June 2025	Authorized Depth: -42ft.
	Width Range: 250ft to 250ft
Document Page: 1 of 3	Side Slope Ratio: 1:2.5 (Rise : Run)
Scale: 1:3,000	PDF Print Date: 7/2/2025
Mapped by: M3AOXPAC	
Additional Imagery info:	



HYDROGRAPHIC SURVEY
U.S. ARMY ENGINEER DISTRICT
CORPS OF ENGINEERS
GALVESTON, TEXAS

Station: 20+000 to 40+000
BRAZOS ISLAND HARBOR
Junction Basin to Boca Chica Passing Basin

Channel Features

- Channel Center Line
- Channel Toe
- Channel Dimensions

Aids to Navigation

- Green Side Aids
- Red Side Aids
- Lights

MLLW

0 - 25	25 - 30	30 - 35	35 - 37	37 - 39	39 - 42	42 - 44	44 - 46	< 46
Red	Orange	Yellow	Light Green	Green	Dark Green	Blue	Dark Blue	Black

NOTES:
1. Horizontal coordinates are referenced to Texas State Plane Coordinate System, South Zone NAD83 US Survey Feet.
2. Elevations are referenced to Mean Lower Low Water (MLLW) datum.
3. This project was designed by the Galveston District of the U.S. Army Corps of Engineers. The initials and signatures and registration designations of individuals appear on these project documents within the scope of their employment as required by 47CFR 110.1-4102.
4. The information depicted on this survey map represents the results of surveys made on the dates indicated and can only be considered as indicating the general conditions existing at that time. These conditions are subject to rapid change due to shoaling events. A prudent mariner should not rely exclusively on the information provided here. Required by 33 CFR 209.325
5. For the most up to date information please check our website at: <http://www.usace.army.mil/Missions/Navigation/HydrographicSurveys/>

Service Layer Credits: World Topographic Map: Texas Parks & Wildlife, Esri, HERE, Garmin, INCREMENT P, USGS, METINASA, NOAA, EPA, USDA
World Imagery: Maxar
World Ocean Base: Esri, GEBCO, Garmin, NaturalVue

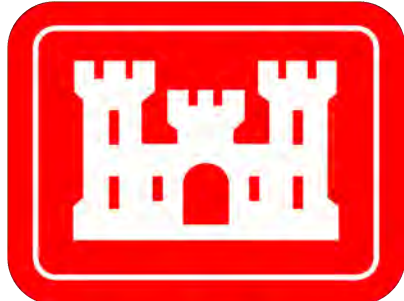
Additional Combined Survey Dates and Stationing:
Combined survey dates 20241217_18P500_19P800; 20250317_19P800_39000;
20250626_39P000_41P000

Coordinate System: NAD 1983 StatePlane Texas South FIPS 4205 Feet
Projection: Lambert Conformal Conic

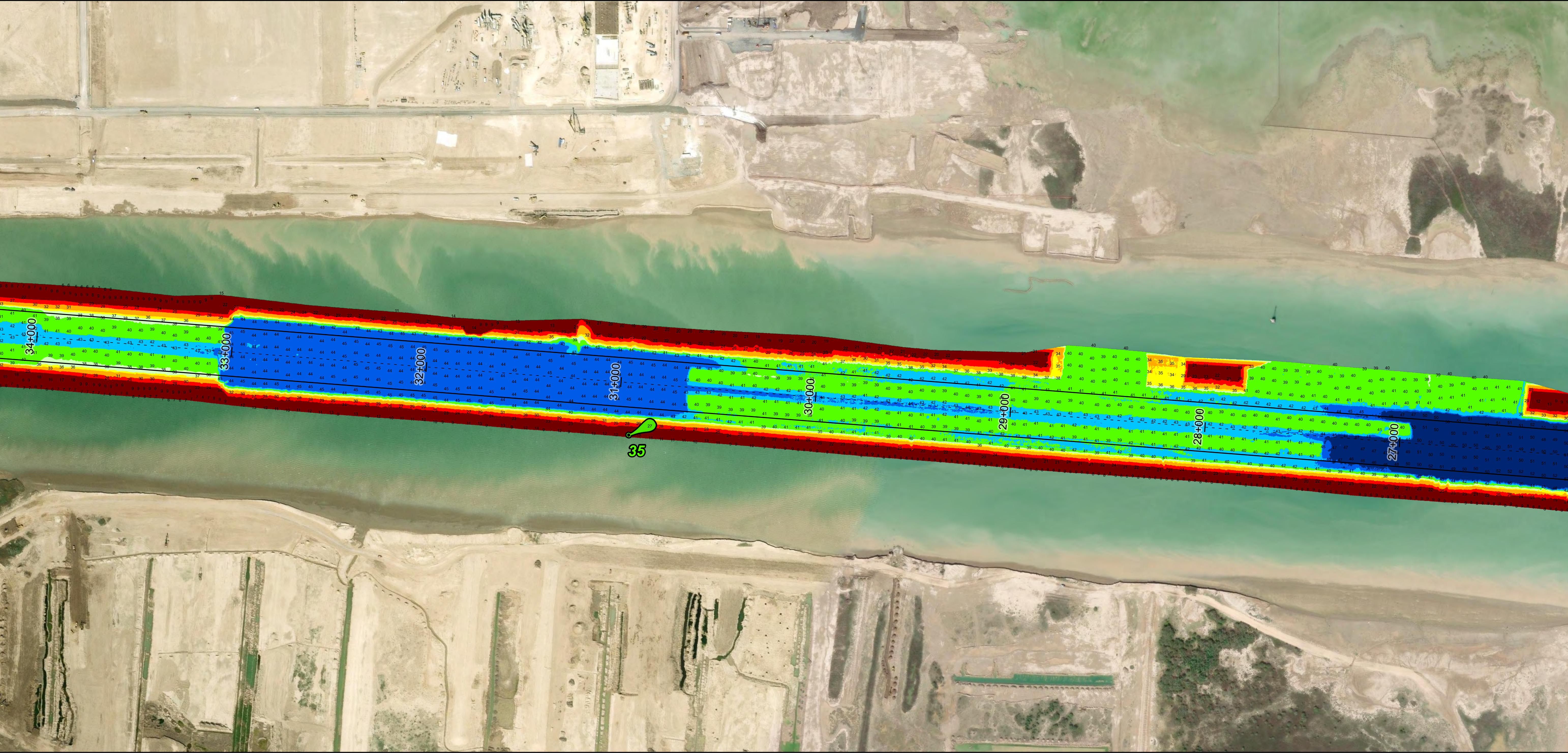
Dredging Reach Extent
0 0.3 0.6 1.2 Miles

Hydrographic Survey Extent
0 255 510 1,020 Feet

Brazos Island Harbor: Junction Basin to Boca Chica Passing Basin



U.S. Army Corps of Engineers
Galveston District



Channel Features

- Channel Center Line
- Channel Toe
- Channel Dimensions

Aids to Navigation

- Green Side Aids
- Red Side Aids
- Lights

MLLW

0 - 25	25 - 30	30 - 35	35 - 37	37 - 39	39 - 42	42 - 44	44 - 46	< 46
Red	Orange	Yellow	Light Green	Green	Dark Green	Blue	Dark Blue	Black

NOTES:
1. Horizontal coordinates are referenced to Texas State Plane Coordinate System, South Zone NAD83 US Survey Feet.
2. Elevations are referenced to Mean Lower Low Water (MLLW) datum.
3. This project was designed by the Galveston District of the U.S. Army Corps of Engineers. The initials and signatures and registration designations of individuals appear on these project documents within the scope of their employment as required by 47CFR 110.1-41.02.
4. The information depicted on this survey map represents the results of surveys made on the dates indicated and can only be considered as indicating the general conditions existing at that time. These conditions are subject to rapid change due to shoaling events. A prudent mariner should not rely exclusively on the information provided here. Required by 33 CFR 209.325
5. For the most up to date information please check our website at: <http://www.saw.usace.army.mil/Missions/Navigation/HydrographicSurveys/>
Service Layer Credits: World Topographic Map: Texas Parks & Wildlife, Esri, HERE, Garmin, INCREMENT P, USGS, METINASA, NOAA, EPA, USACE
World Imagery: Maxar
World Ocean Base: Esri, GEBCO, Garmin, NaturalVue

Additional Combined Survey Dates and Stationing:

Combined survey dates 20241217_18P500_19P800; 20250317_19P800_39000;
20250626_39P000_41P000

Coordinate System: NAD 1983 StatePlane Texas South FIPS 4205 Feet
Projection: Lambert Conformal Conic

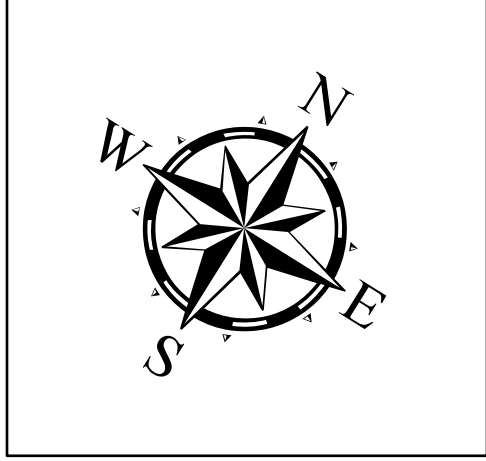
Dredging Reach Extent

0 0.3 0.6 1.2 Miles

Hydrographic Survey Extent

0 255 510 1,020 Feet

Latest Survey Collection Date: 26 June 2025		Authorized Depth: -42ft.
Document Page: 2 of 3	Website Index Number: 8	Width Range: 250ft to 250ft
Scale: 1:3,000		Side Slope Ratio: 1:2.5 (Rise : Run)
Mapped by: M3AOXPAC		PDF Print Date: 7/2/2025
Additional Imagery info:		



HYDROGRAPHIC SURVEY

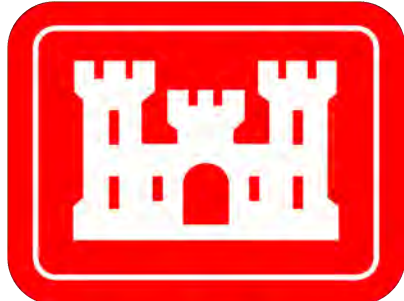
U.S. ARMY ENGINEER DISTRICT
CORPS OF ENGINEERS
GALVESTON, TEXAS

Station: 20+000 to 40+000

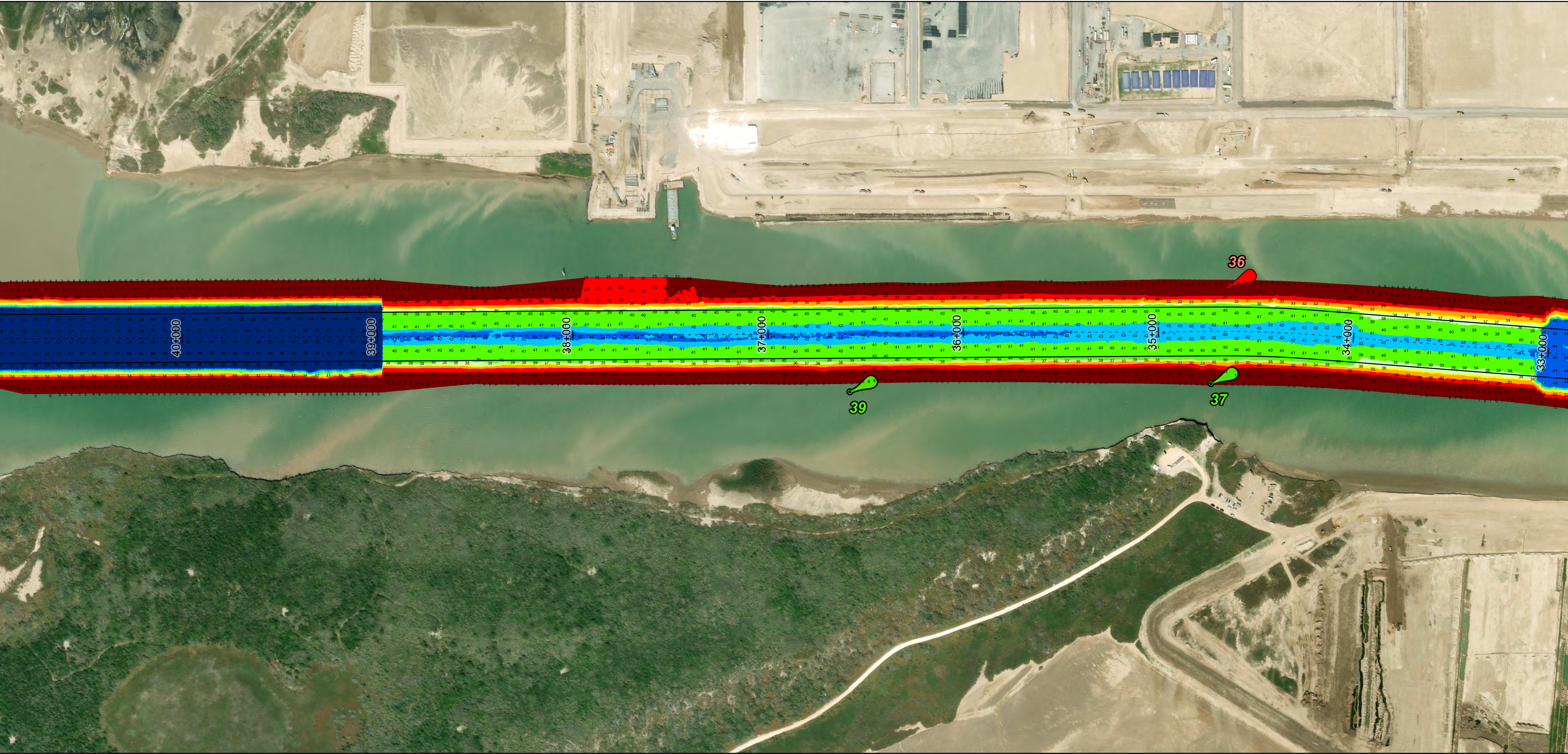
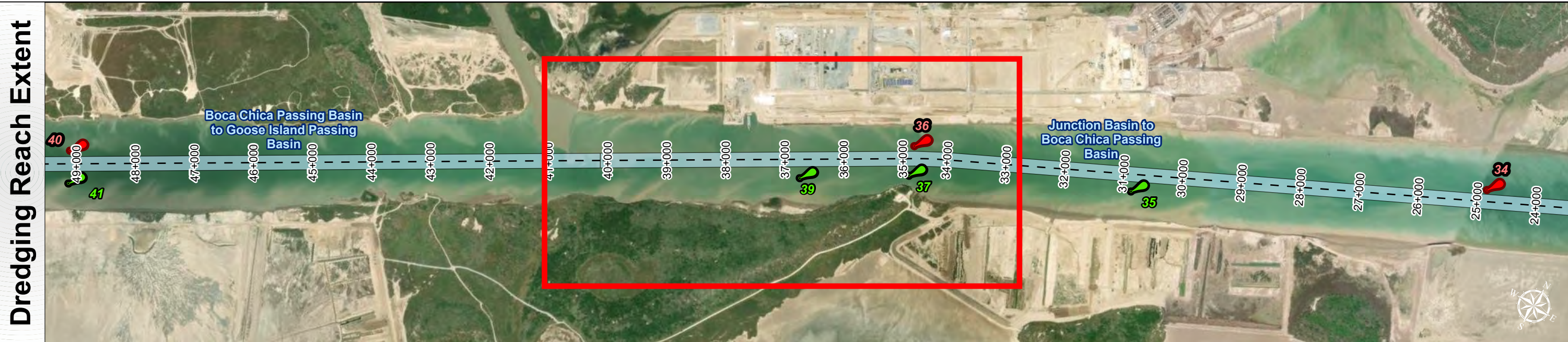
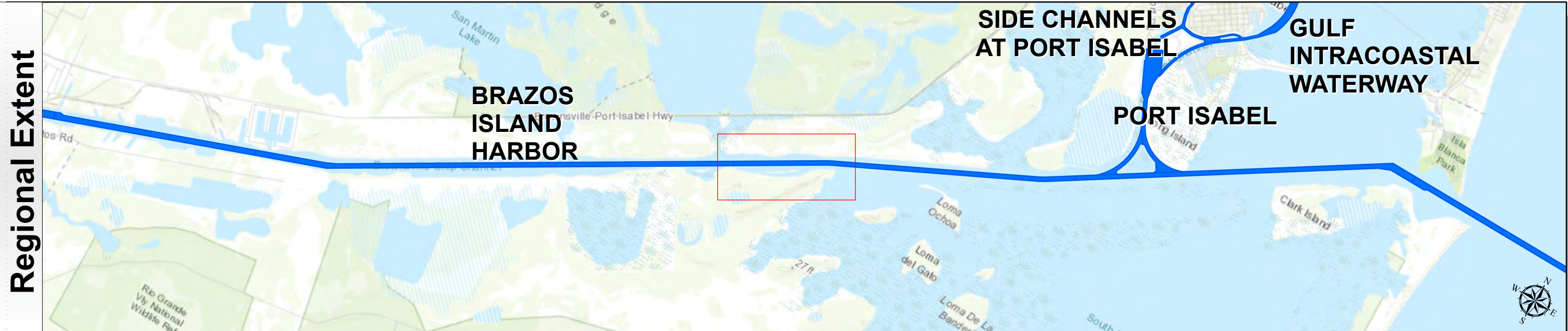
BRAZOS ISLAND HARBOR

Junction Basin to Boca Chica Passing Basin

Brazos Island Harbor: Junction Basin to Boca Chica Passing Basin



U.S. Army Corps of Engineers
Galveston District



Channel Features

- Channel Center Line
- Channel Toe
- Channel Dimensions

Aids to Navigation

- Green Side Aids
- Red Side Aids
- Lights

MLLW

0 - 25	25 - 30	30 - 35	35 - 37	37 - 39	39 - 42	42 - 44	44 - 46	< 46
Red	Orange	Yellow	Light Green	Green	Dark Green	Blue	Dark Blue	Black

NOTES:
1. Horizontal coordinates are referenced to Texas State Plane Coordinate System, South Zone NAD83 US Survey Feet.
2. Elevations are referenced to Mean Lower Low Water (MLLW) datum.
3. This project was designed by the Galveston District of the U.S. Army Corps of Engineers. The initials and signatures and registration designations of individuals appear on these project documents within the scope of their employment as required by 47CFR 110.1-41.02.
4. The information depicted on this survey map represents the results of surveys made on the dates indicated and can only be considered as indicating the general conditions existing at that time. These conditions are subject to rapid change due to shoaling events. A prudent mariner should not rely exclusively on the information provided here. Required by 33 CFR 209.325
5. For the most up to date information please check our website at: <http://www.swg.usace.army.mil/Missions/Navigation/HydrographicSurveys/>
Service Layer Credits: World Topographic Map: Texas Parks & Wildlife, Esri, HERE, Garmin, INCREMENT P, USGS, METINASA, NGA, EPA, USDA
World Imagery: Maxar
World Ocean Base: Esri, GEBCO, Garmin, NaturalVue

Additional Combined Survey Dates and Stationing:
Combined survey dates 20241217_18P500_19P800; 20250317_19P800_39000;
20250626_39P000_41P000

Coordinate System: NAD 1983 StatePlane Texas South FIPS 4205 Feet
Projection: Lambert Conformal Conic

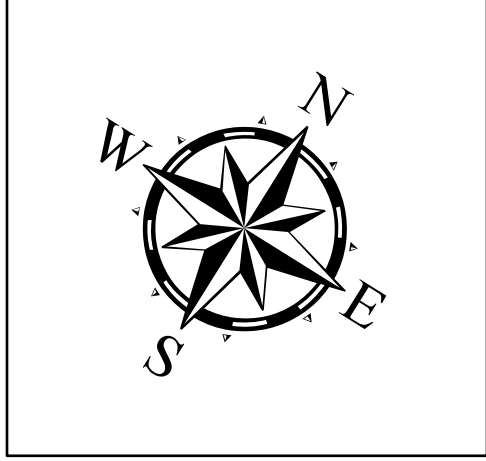
Dredging Reach Extent

0 0.3 0.6 1.2 Miles

Hydrographic Survey Extent

0 255 510 1,020 Feet

Latest Survey Collection Date: 26 June 2025	Authorized Depth: -42ft.
	Width Range: 250ft to 250ft
Document Page: 3 of 3	Side Slope Ratio: 1:2.5 (Rise : Run)
Scale: 1:3,000	PDF Print Date: 7/2/2025
Mapped by: M3AOXPAC	
Additional Imagery info:	



HYDROGRAPHIC SURVEY
U.S. ARMY ENGINEER DISTRICT
CORPS OF ENGINEERS
GALVESTON, TEXAS

Station: 20+000 to 40+000
BRAZOS ISLAND HARBOR
Junction Basin to Boca Chica Passing Basin