

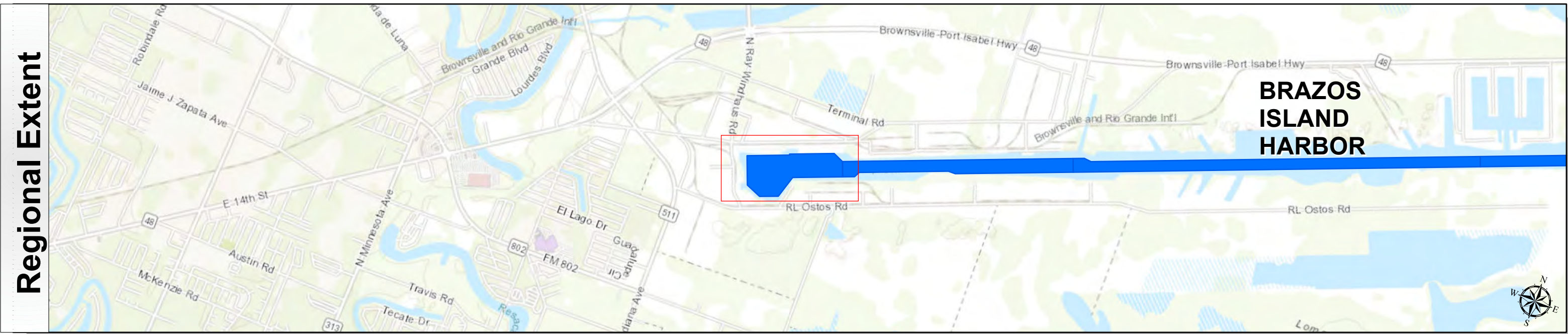
Brazos Island Harbor: Brownsville Turning Basin



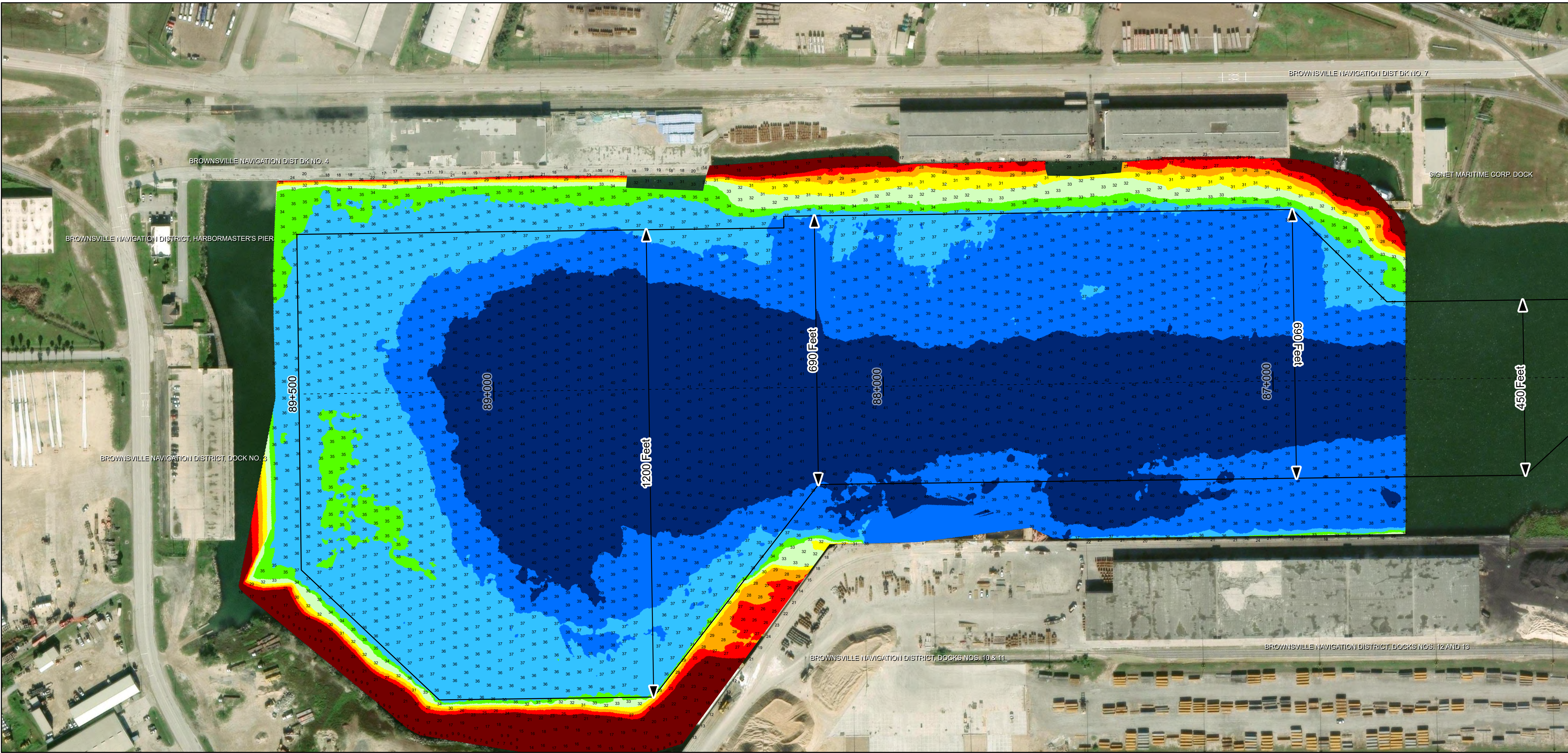
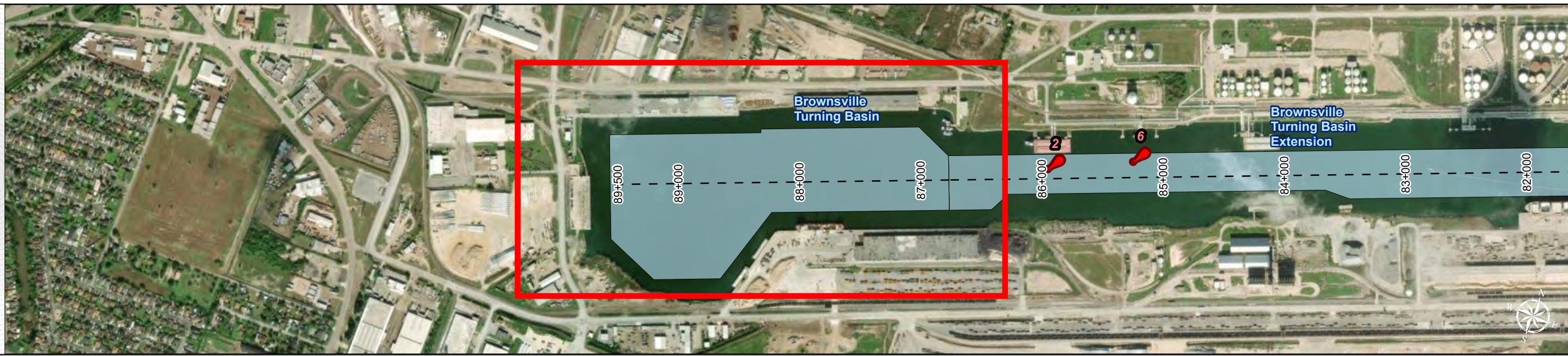
U.S. Army Corps of Engineers
Galveston District



Regional Extent



Dredging Reach Extent



Channel Features

- Channel Center Line
- Channel Toe
- Channel Dimensions

Aids to Navigation

- Green Side Aids
- Red Side Aids
- Lights

MLLW

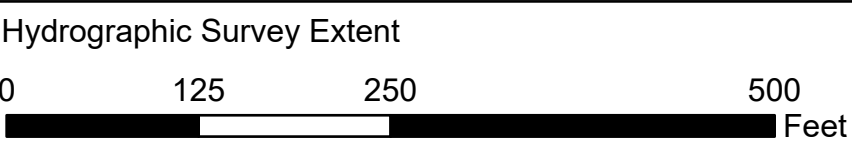
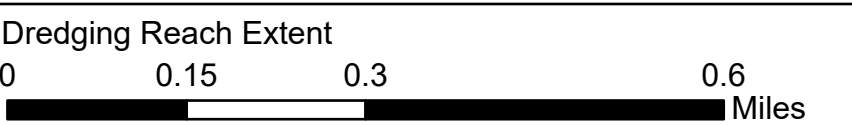


NOTES:

- Horizontal coordinates are referenced to Texas State Plane Coordinate System, South Zone NAD83 US Survey Feet.
 - Elevations are referenced to Mean Lower Low Water (MLLW) datum.
 - This project was designed by the Galveston District of the U.S. Army Corps of Engineers. The initials and signatures and registration designations of individuals appear on these project documents within the scope of their employment as required by 47CFR 110.1-41.02.
 - The information depicted on this survey map represents the results of surveys made on the dates indicated and can only be considered as indicating the general conditions existing at that time. These conditions are subject to rapid change due to shoaling events. A prudent mariner should not rely exclusively on the information provided here. Required by 33 CFR 209.325.
 - For the most up to date information please check our website at: <http://www.svg.usace.army.mil/Missions/Navigation/HydrographicSurveys/>
- Service Layer Credits: World Topographic Map; Texas Parks & Wildlife, Esri, HERE, Garmin, INCREMENT P, USGS, METI/NSA, EPA, USDA
World Imagery: Maxar, Microsoft
World Imagery: Maxar
World Ocean Base: Esri, GEBCO, Garmin, NaturalVue

Additional Combined Survey Dates and Stationing:
COMB_SURV_INFO_HERE

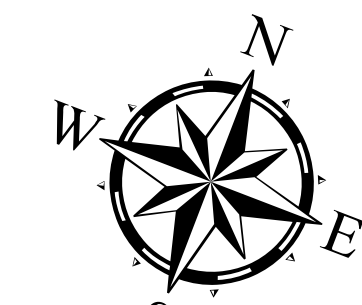
Coordinate System: NAD 1983 StatePlane Texas South FIPS 4205 Feet
Projection: Lambert Conformal Conic



HYDROGRAPHIC SURVEY

U.S. ARMY ENGINEER DISTRICT
CORPS OF ENGINEERS
GALVESTON, TEXAS

Station: 86+705 to 89+500
BRAZOS ISLAND HARBOR
Brownsville Turning Basin



Latest Survey Collection Date: 06 March 2025

Document Page: 1 of 1

Website Index Number: 17

Scale: 1:1,500

Mapped by: m3odnmhng

Additional Imagery info:

Authorized Depth: -42ft

Width Range: 450ft to 1200ft

Side Slope Ratio: 1:2.5 (Rise : Run)

PDF Print Date: 3/11/2025