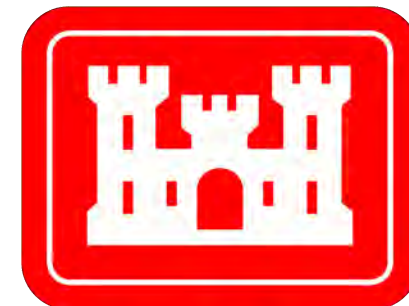


# Aransas Pass: Conn Brown Harbor



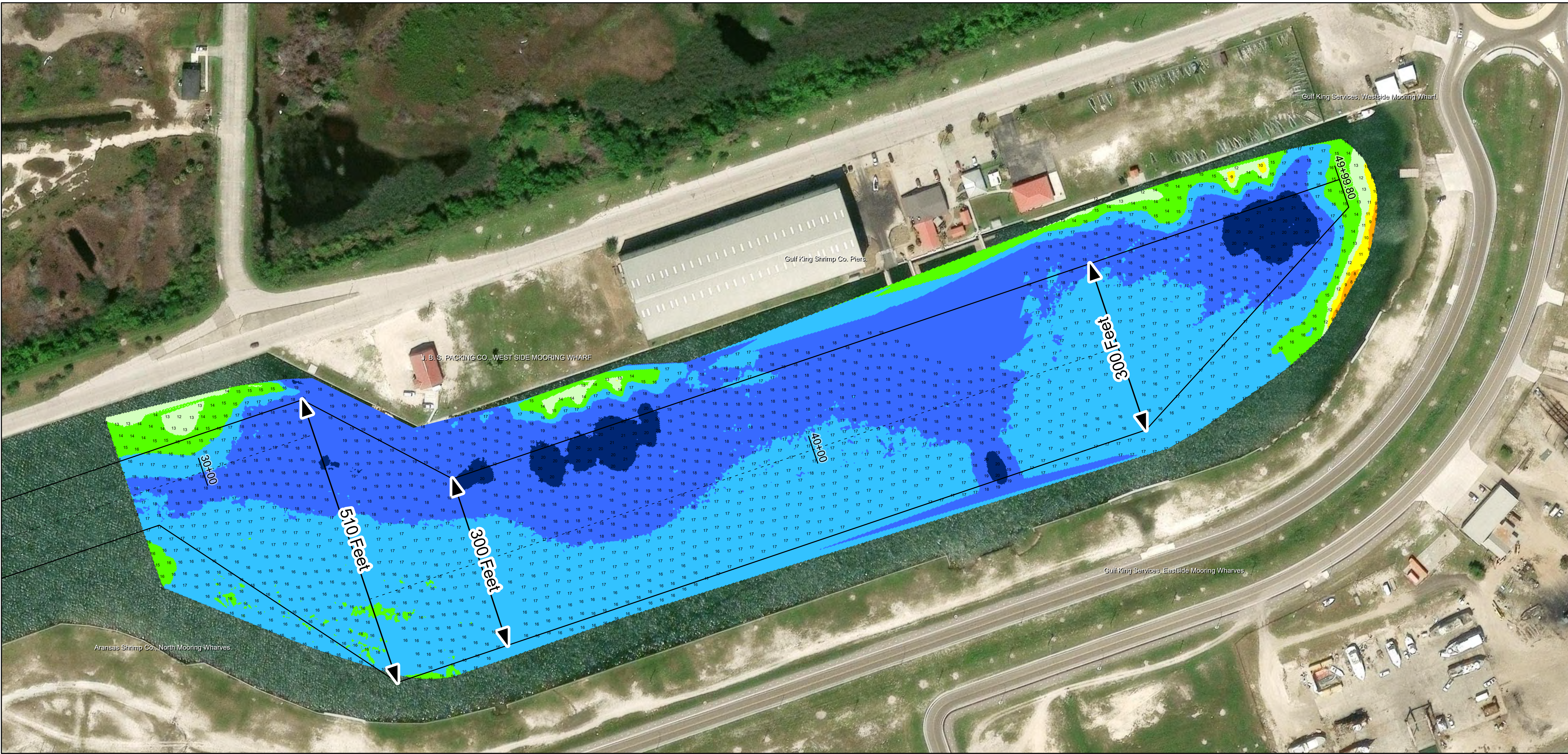
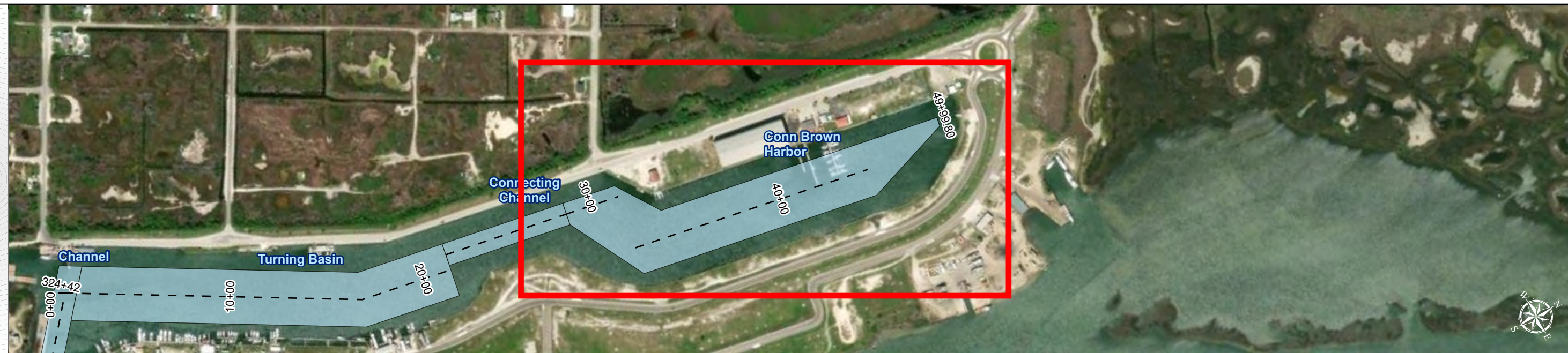
U.S. Army Corps of Engineers  
Galveston District



Regional Extent



Dredging Reach Extent



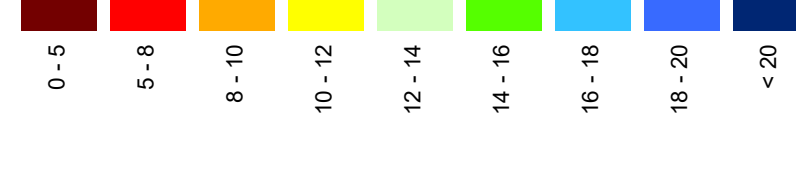
Channel Features

- Channel Center Line
- Channel Toe
- Channel Dimensions

Aids to Navigation

- Green Side Aids
- Red Side Aids
- Lights

MLLW

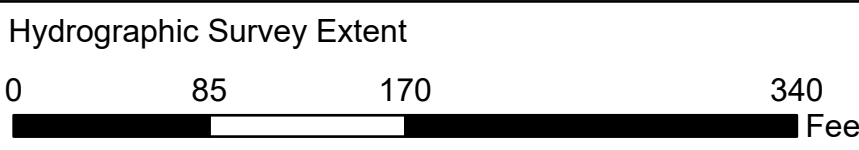
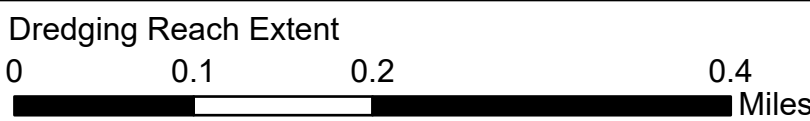


NOTES:

- Horizontal coordinates are referenced to Texas State Plane Coordinate System, South Zone NAD83 US Survey Feet.
  - Elevations are referenced to Mean Lower Low Water (MLLW) datum.
  - This project was designed by the Galveston District of the U.S. Army Corps of Engineers. The initials and signatures and registration designations of individuals appear on these project documents within the scope of their employment as required by 47CFR 110.1-41.02.
  - The information depicted on this survey map represents the results of surveys made on the dates indicated and can only be considered as indicating the general conditions existing at that time. These conditions are subject to rapid change due to shoaling events. A prudent mariner should not rely exclusively on the information provided here. Required by 33 CFR 209.325.
  - For the most up to date information please check our website at: <http://www.svg.usace.army.mil/Missions/Navigation/HydrographicSurveys/>
- Service Layer Credits: World Topographic Map, Texas Parks & Wildlife, Esri, HERE, Garmin, INCREMENT P, USGS, METINASA, EPA, USDA  
World Imagery: Source: Esri, Maxar, Earthstar Geographics, and the GIS User Community  
World Imagery: Mapbox, Microsoft  
World Ocean Base: Esri, GEBCO, Garmin, NaturalVue

Additional Combined Survey Dates and Stationing:  
COMB\_SURV\_INFO\_HERE

Coordinate System: NAD 1983 StatePlane Texas South FIPS 4205 Feet  
Projection: Lambert Conformal Conic



Authorized Depth: -16ft.

Width Range: 125ft to 510ft

Side Slope Ratio: 1:2 (Rise : Run)

PDF Print Date: 4/18/2025

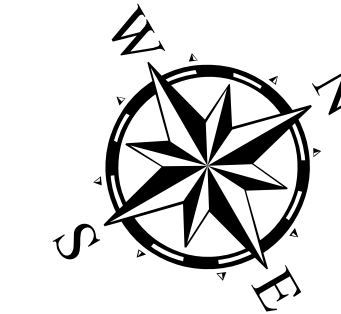
Latest Survey Collection Date: 08 April 2025

Document Page: 1 of 1 Website Index Number: 8

Scale: 1:1,000

Mapped by: m3odnmhg

Additional Imagery info:



**HYDROGRAPHIC SURVEY**

U.S. ARMY ENGINEER DISTRICT  
CORPS OF ENGINEERS  
GALVESTON, TEXAS

Station: 29+00 to 50+00

ARANSAS PASS

Conn Brown Harbor