

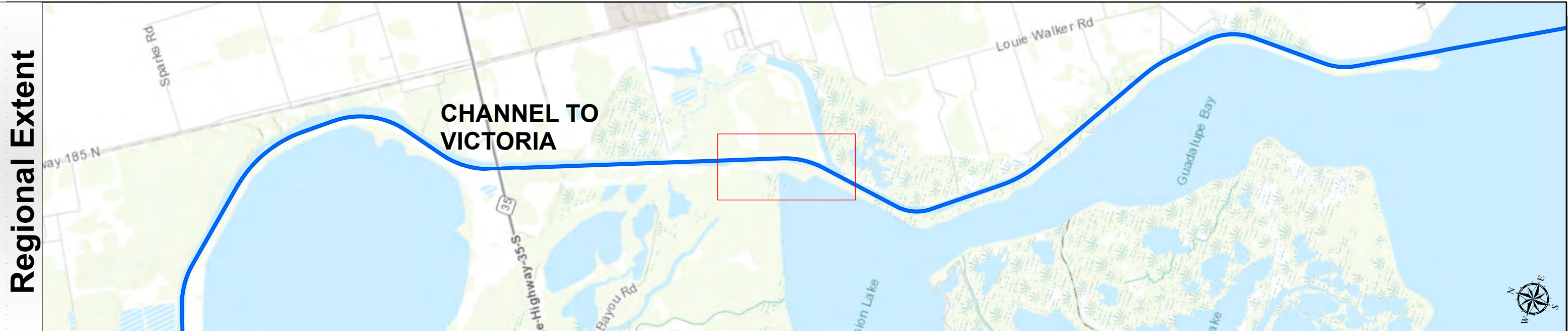
# Channel to Victoria: Mile 14 to Mile 29



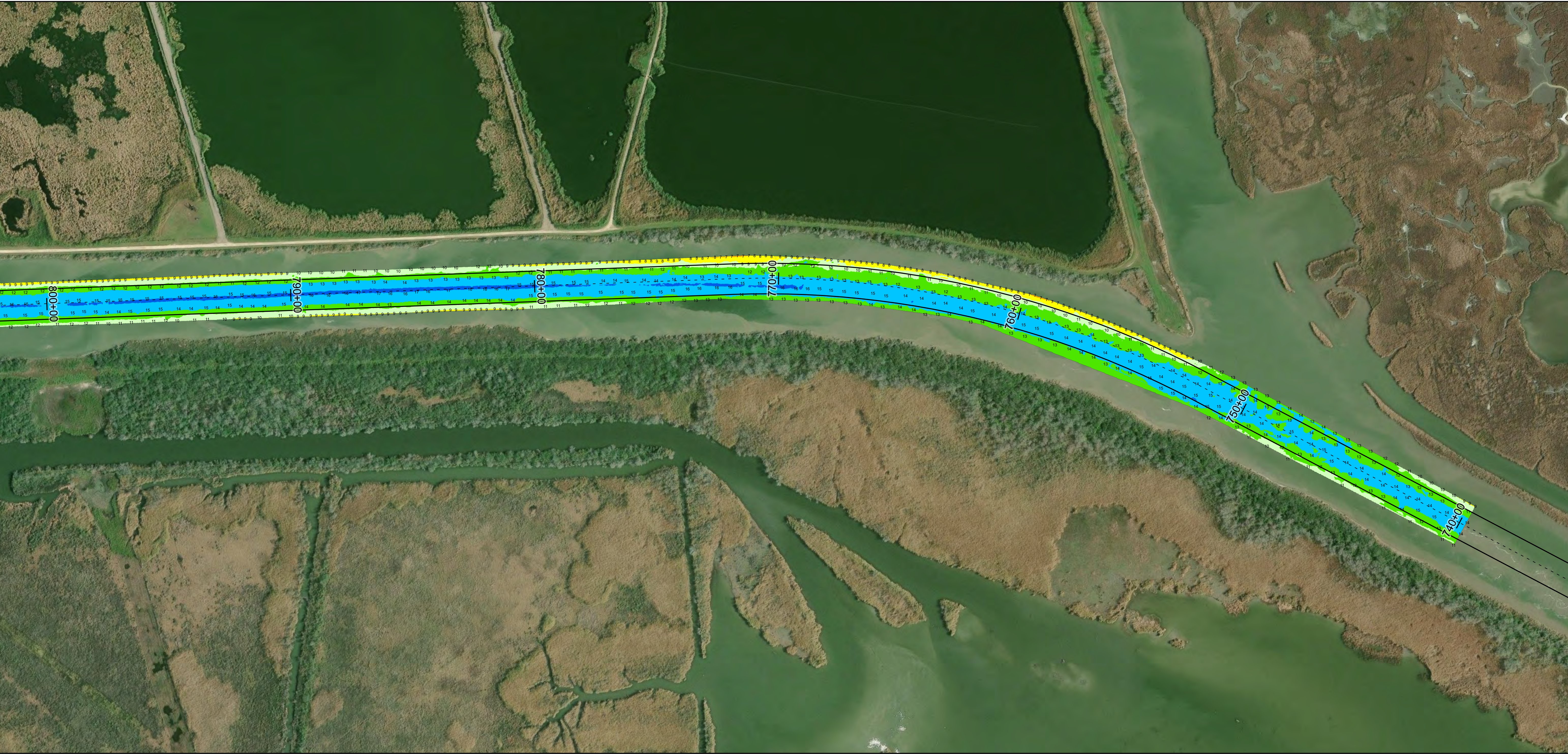
U.S. Army Corps of Engineers  
Galveston District



Regional Extent



Dredging Reach Extent



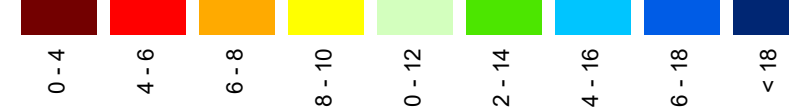
Channel Features

- Channel Center Line
- Channel Toe
- Channel Dimensions

Aids to Navigation

- Green Side Aids
- Red Side Aids
- Lights

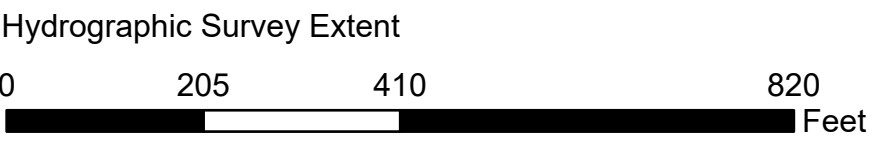
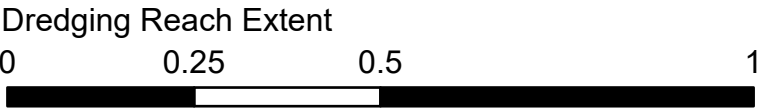
MLLW



NOTES:  
1. Horizontal coordinates are referenced to Texas State Plane Coordinate System, South Central Zone NAD83 US Survey Feet.  
2. Elevations are referenced to Mean Lower Low Water (MLLW) datum.  
3. This project was designed by the Galveston District of the U.S. Army Corps of Engineers. The initials and signatures and registration designations of individuals appear on these project documents within the scope of their employment as required by 47CFR 110.1-41.02.  
4. The information depicted on this survey map represents the results of surveys made on the dates indicated and can only be considered as indicating the general conditions existing at that time. These conditions are subject to rapid change due to shoaling events. A prudent mariner should not rely exclusively on the information provided here. Required by 33 CFR 200.325.  
5. For the most up to date information please check our website at: <http://www.svg.usace.army.mil/Missions/Navigation/HydrographicSurveys/>  
Service Layer Credits: World Topographic Map: Texas Parks & Wildlife, Esri, HERE, Garmin, INCREMENT P, USGS, METI/NASA, NGA, EPA, USDA  
World Imagery: Maxar, Microsoft  
World Imagery: Maxar  
World Ocean Base: Esri, GEBCO, Garmin, NaturalVue

Additional Combined Survey Dates and Stationing:  
COMB\_SURV\_INFO\_HERE

Coordinate System: NAD 1983 StatePlane Texas South Central FIPS 4204 Feet  
Projection: Lambert Conformal Conic



HYDROGRAPHIC SURVEY

U.S. ARMY ENGINEER DISTRICT  
CORPS OF ENGINEERS  
GALVESTON, TEXAS

Station: 740+00 to 1540+00  
CHANNEL TO VICTORIA  
Mile 14 to Mile 29



Latest Survey Collection Date: 13 May 2025

Document Page: 1 of 14

Website Index Number: 17

Scale: 1:2,400

Mapped by: m3odnmhg

Additional Imagery info:

Authorized Depth: -14ft.

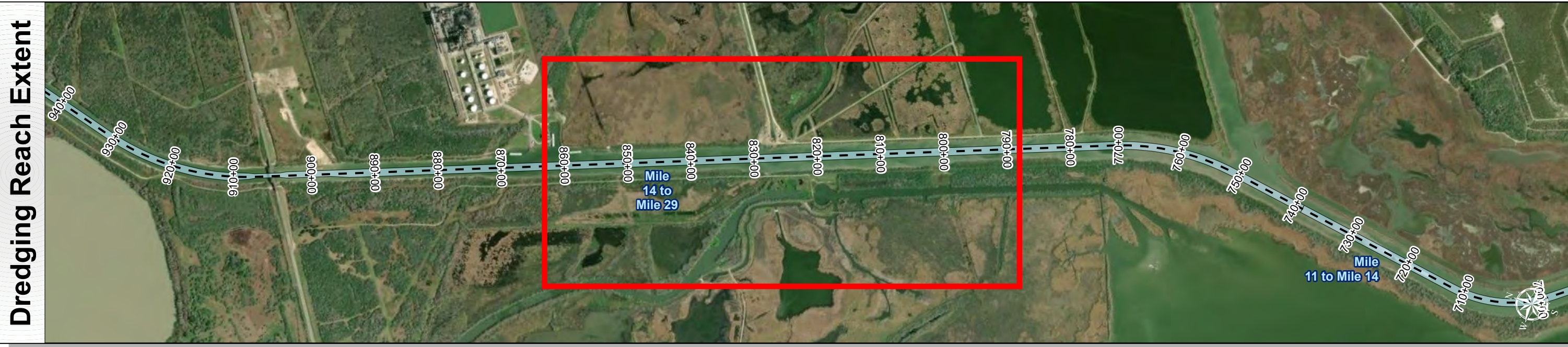
Width Range: 70ft to 125ft

Side Slope Ratio: 1:3 (Rise : Run)

PDF Print Date: 5/16/2025



# Channel to Victoria: Mile 14 to Mile 29

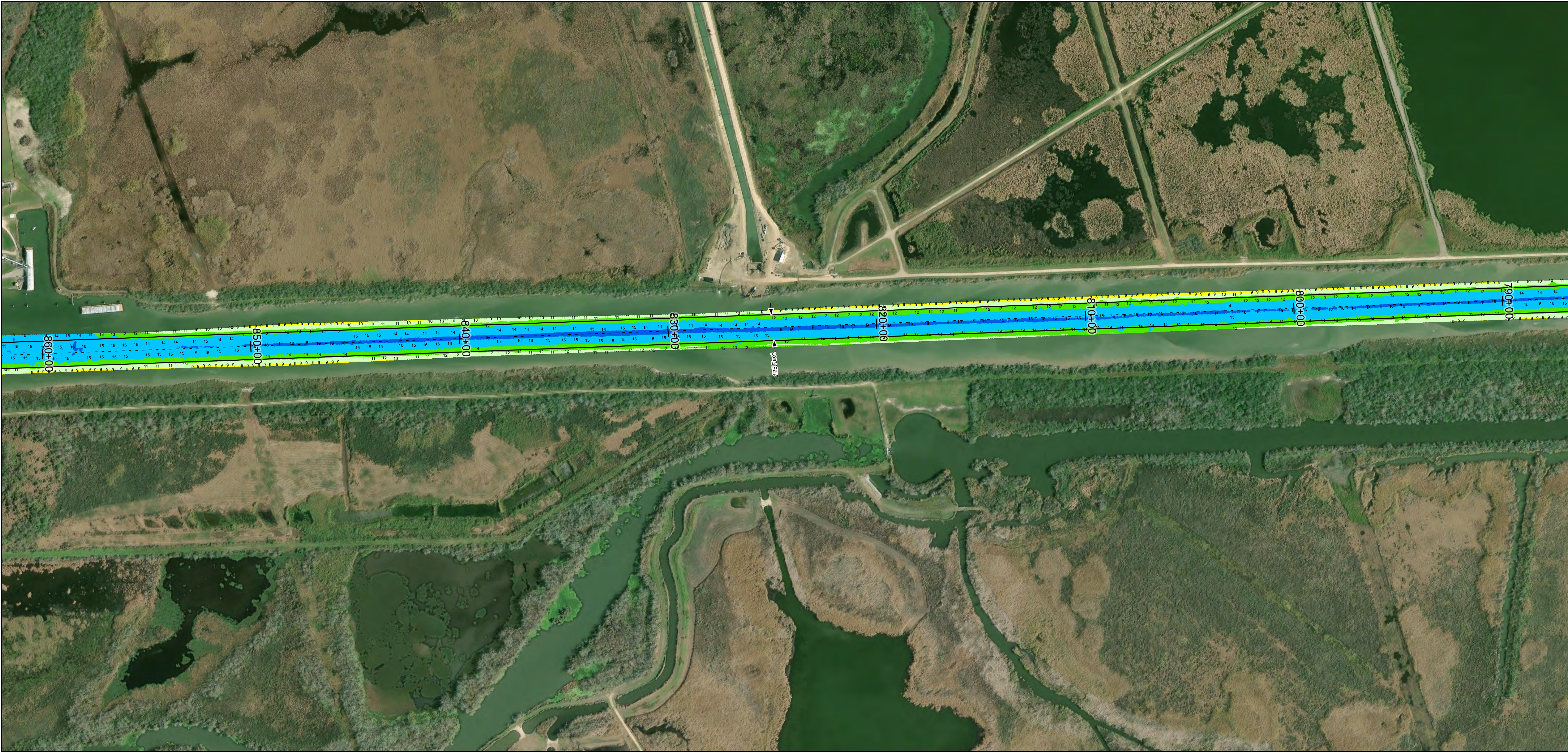




U.S. Army Corps of Engineers  
Galveston District



TEXAS



**Channel Features**

- Channel Center Line
- Channel Toe
- Channel Dimensions

**Aids to Navigation**

- Green Side Aids
- Red Side Aids
- Lights

**MLLW**

0 - 4	4 - 6	6 - 8	8 - 10	10 - 12	12 - 14	14 - 16	16 - 18	< 18
Red	Orange	Yellow	Light Green	Green	Dark Green	Blue	Dark Blue	Black

NOTES:  
1. Horizontal coordinates are referenced to Texas State Plane Coordinate System, South Central Zone NAD83 US Survey Feet.  
2. Elevations are referenced to Mean Lower Low Water (MLLW) datum.  
3. This project was designed by the Galveston District of the U.S. Army Corps of Engineers. The initials and signatures and registration designations of individuals appear on these project documents within the scope of their employment as required by 47CFR 110.1-41.02.  
4. The information depicted on this survey map represents the results of surveys made on the dates indicated and can only be considered as indicating the general conditions existing at that time. These conditions are subject to rapid change due to shoaling events. A prudent mariner should not rely exclusively on the information provided here. Required by 33 CFR 209.325.  
5. For the most up to date information please check our website at: <http://www.svg.usace.army.mil/Missions/Navigation/HydrographicSurveys/>

Service Layer Credits: World Topographic Map: Texas Parks & Wildlife, Esri, HERE, Garmin, INCREMENT P, USGS, METINASA, NGA, EPA, USDA  
World Imagery: Maxar  
World Ocean Base: Esri, GEBCO, Garmin, NaturalVue

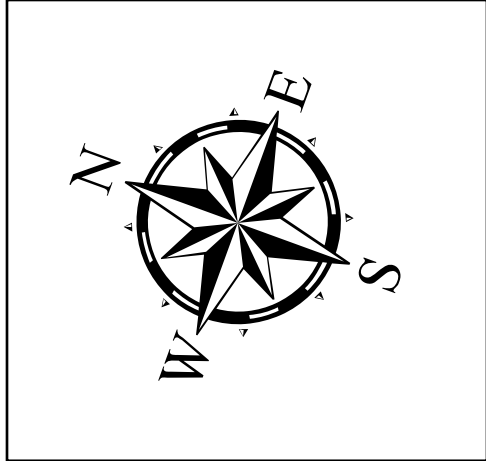
Additional Combined Survey Dates and Stationing:  
COMB\_SURV\_INFO\_HERE

Coordinate System: NAD 1983 StatePlane Texas South Central FIPS 4204 Feet  
Projection: Lambert Conformal Conic

Dredging Reach Extent  
0 0.28 0.55 1.1 Miles

Hydrographic Survey Extent  
0 240 480 960 Feet

Latest Survey Collection Date: 13 May 2025		Authorized Depth: -14ft.
Document Page: 2 of 14	Website Index Number: 18	Width Range: 70ft to 125ft
Scale: 1:2,800		
Mapped by: m3odnmhg		Side Slope Ratio: 1:3 (Rise : Run)
Additional Imagery info:		PDF Print Date: 5/16/2025



**HYDROGRAPHIC SURVEY**  
U.S. ARMY ENGINEER DISTRICT  
CORPS OF ENGINEERS  
GALVESTON, TEXAS

**Station: 740+00 to 1540+00**  
**CHANNEL TO VICTORIA**  
Mile 14 to Mile 29



# Channel to Victoria: Mile 14 to Mile 29



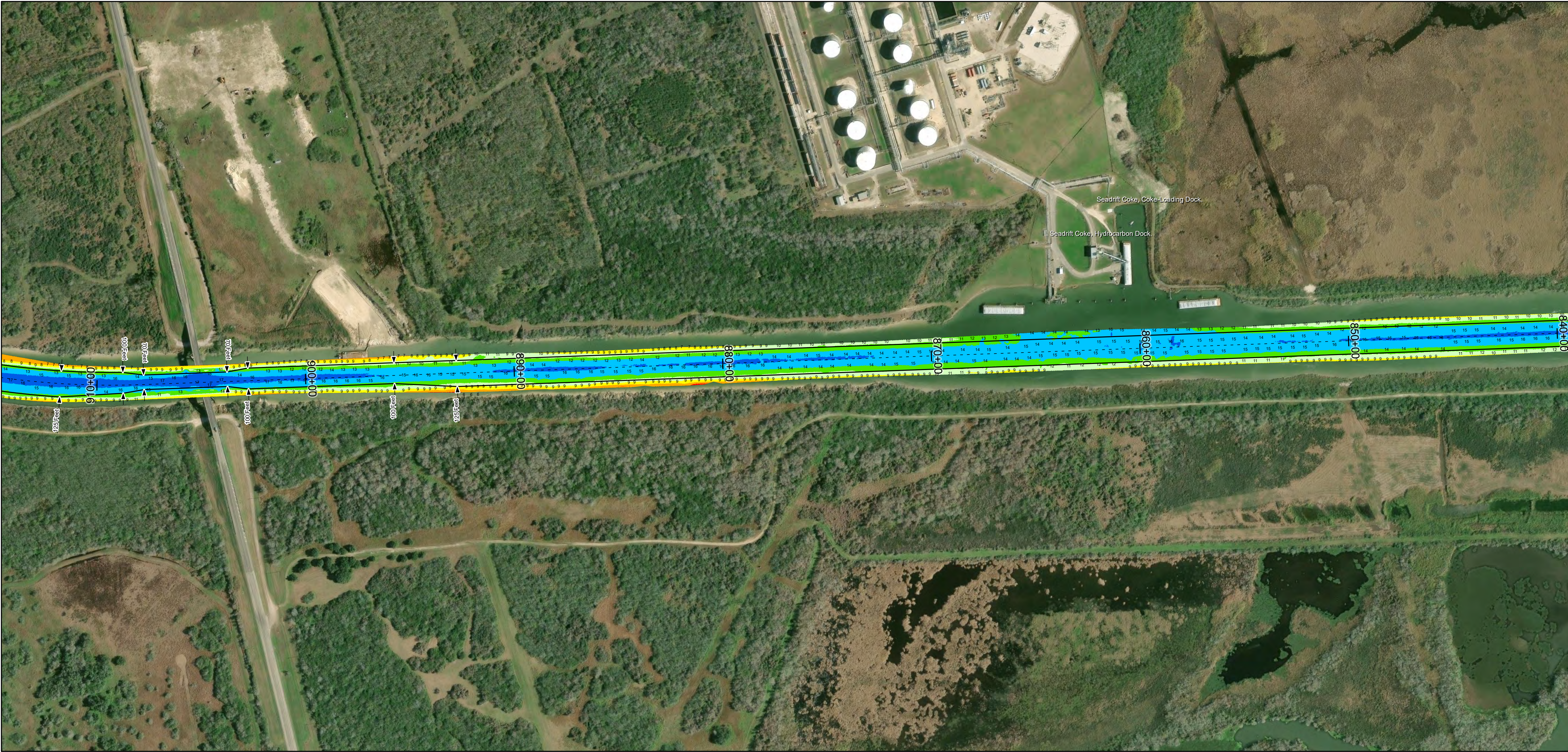
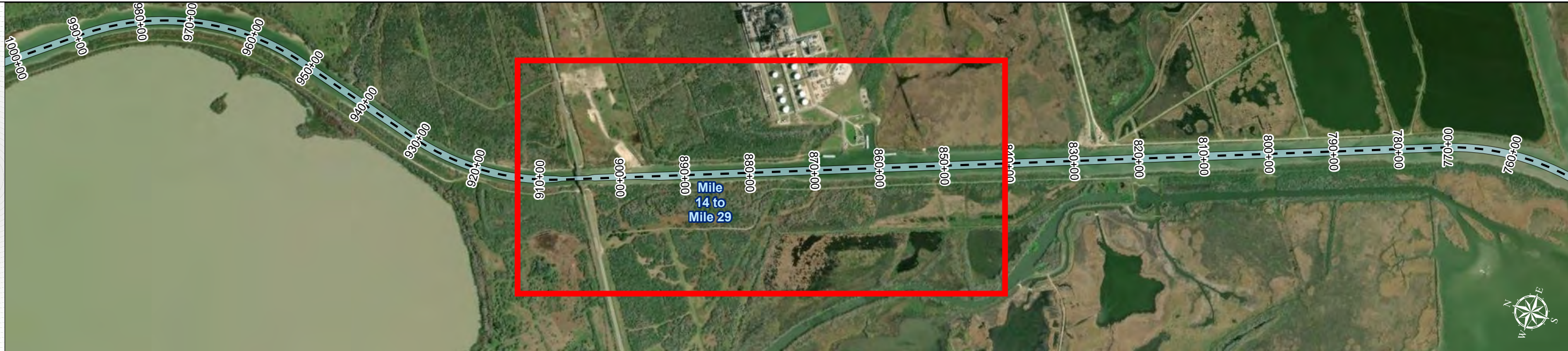
U.S. Army Corps of Engineers  
Galveston District



Regional Extent



Dredging Reach Extent

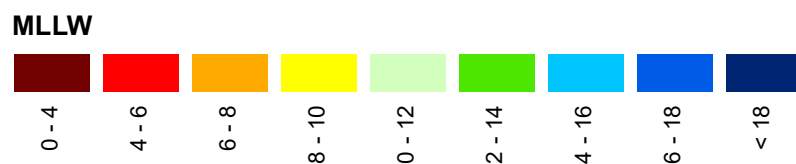


## Channel Features

- Channel Center Line
- Channel Toe
- Channel Dimensions

## Aids to Navigation

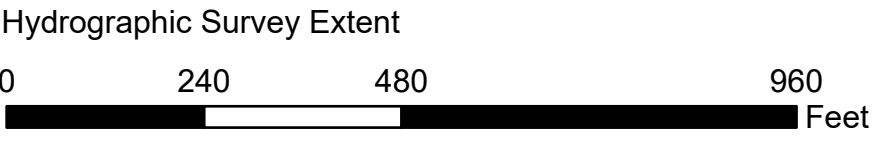
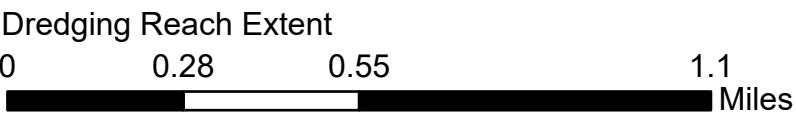
- Green Side Aids
- Red Side Aids
- Lights



NOTES:  
1. Horizontal coordinates are referenced to Texas State Plane Coordinate System, South Central Zone NAD83 US Survey Feet.  
2. Elevations are referenced to Mean Lower Low Water (MLLW) datum.  
3. This project was designed by the Galveston District of the U.S. Army Corps of Engineers. The initials and signatures and registration designations of individuals appear on these project documents within the scope of their employment as required by er1110-1-8102.  
4. The information depicted on this survey map represents the results of surveys made on the dates indicated and can only be considered as indicating the general conditions existing at that time. These conditions are subject to rapid change due to shoaling events. A prudent mariner should not rely exclusively on the information provided here. Required by 33 or 209.325  
5. For the most up to date information please check our website at: <http://www.swg.usace.army.mil/Missions/Navigation/HydrographicSurveys/>  
Service Layer Credits: World Topographic Map: Texas Parks & Wildlife, Esri, HERE, Garmin, INCREMENT P, USGS, METI/NASA, NGA, EPA, USDA  
World Imagery: Maxar  
World Ocean Base: Esri, GEBCO, Garmin, NaturalVue

Additional Combined Survey Dates and Stationing:  
COMB\_SURV\_INFO\_HERE

Coordinate System: NAD 1983 StatePlane Texas South Central FIPS 4204 Feet  
Projection: Lambert Conformal Conic



## HYDROGRAPHIC SURVEY

U.S. ARMY ENGINEER DISTRICT  
CORPS OF ENGINEERS  
GALVESTON, TEXAS

Station: 740+00 to 1540+00  
CHANNEL TO VICTORIA  
Mile 14 to Mile 29



Latest Survey Collection Date: 13 May 2025

Document Page: 3 of 14

Website Index Number: 19

Scale: 1:2,800

Mapped by: m3odnmhg

Additional Imagery info:

Authorized Depth: -14ft.

Width Range: 70ft to 125ft

Side Slope Ratio: 1:3 (Rise : Run)

PDF Print Date: 5/16/2025



# Channel to Victoria: Mile 14 to Mile 29



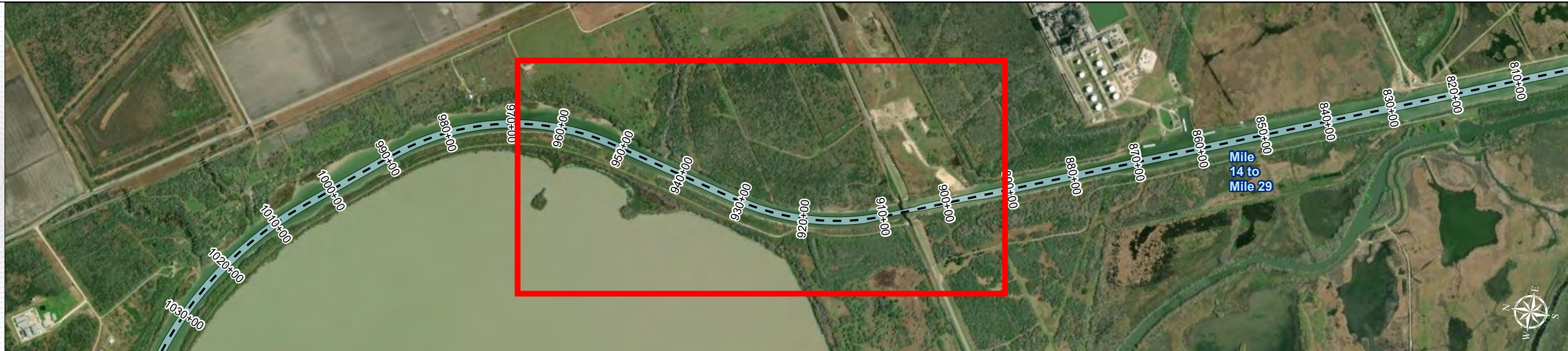
U.S. Army Corps of Engineers  
Galveston District



Regional Extent



Dredging Reach Extent



Channel Features

- Channel Center Line
- Channel Toe
- Channel Dimensions

Aids to Navigation

- Green Side Aids
- Red Side Aids
- Lights

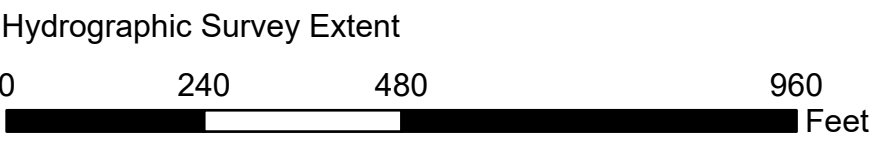
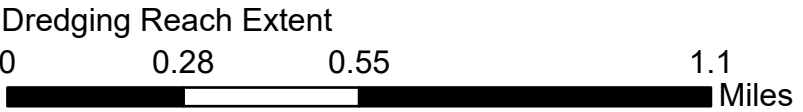
MLLW



NOTES:  
1. Horizontal coordinates are referenced to Texas State Plane Coordinate System, South Central Zone NAD83 US Survey Feet.  
2. Elevations are referenced to Mean Lower Low Water (MLLW) datum.  
3. This project was designed by the Galveston District of the U.S. Army Corps of Engineers. The initials and signatures and registration designations of individuals appear on these project documents within the scope of their employment as required by 47CFR 110.1-41.02.  
4. The information depicted on this survey map represents the results of surveys made on the dates indicated and can only be considered as indicating the general conditions existing at that time. These conditions are subject to rapid change due to shoaling events. A prudent mariner should not rely exclusively on the information provided here. Required by 33 CFR 209.325  
5. For the most up to date information please check our website at: <http://www.svg.usace.army.mil/Missions/Navigation/HydrographicSurveys/>  
Service Layer Credits: World Topographic Map: Texas Parks & Wildlife, Esri, HERE, Garmin, INCREMENT P, USGS, MET/NASA, NGA, EPA, USDA  
World Imagery: Maxar  
World Ocean Base: Esri, GEBCO, Garmin, NaturalVue

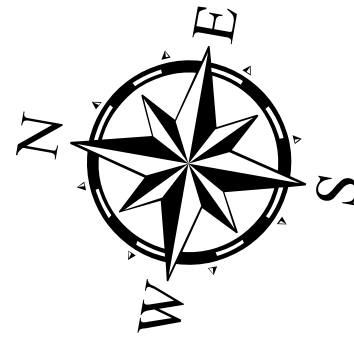
Additional Combined Survey Dates and Stationing:  
COMB\_SURV\_INFO\_HERE

Coordinate System: NAD 1983 StatePlane Texas South Central FIPS 4204 Feet  
Projection: Lambert Conformal Conic



HYDROGRAPHIC SURVEY

U.S. ARMY ENGINEER DISTRICT  
CORPS OF ENGINEERS  
GALVESTON, TEXAS  
Station: 740+00 to 1540+00  
CHANNEL TO VICTORIA  
Mile 14 to Mile 29



Latest Survey Collection Date: 13 May 2025  
Document Page: 4 of 14  
Scale: 1:2,800  
Mapped by: m3odnmhg  
Additional Imagery info:

Authorized Depth: -14ft.

Width Range: 70ft to 125ft

Side Slope Ratio: 1:3 (Rise : Run)

PDF Print Date: 5/16/2025



# Channel to Victoria: Mile 14 to Mile 29



U.S. Army Corps of Engineers  
Galveston District



Regional Extent



Dredging Reach Extent



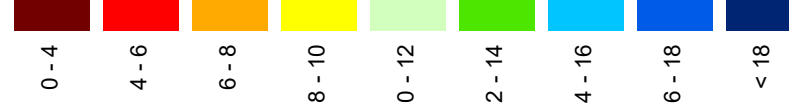
Channel Features

- Channel Center Line
- Channel Toe
- Channel Dimensions

Aids to Navigation

- Green Side Aids
- Red Side Aids
- Lights

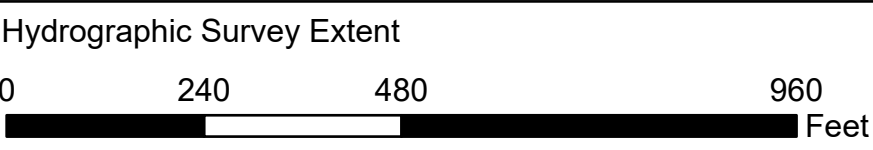
MLLW



NOTES:  
1. Horizontal coordinates are referenced to Texas State Plane Coordinate System, South Central Zone NAD83 US Survey Feet.  
2. Elevations are referenced to Mean Lower Low Water (MLLW) datum.  
3. This project was designed by the Galveston District of the U.S. Army Corps of Engineers. The initials and signatures and registration designations of individuals appear on these project documents within the scope of their employment as required by er1110-1-8102.  
4. The information depicted on this survey map represents the results of surveys made on the dates indicated and can only be considered as indicating the general conditions existing at that time. These conditions are subject to rapid change due to shoaling events. A prudent mariner should not rely exclusively on the information provided here. Required by 33 or 209.325  
5. For the most up to date information please check our website at: <http://www.svg.usace.army.mil/Missions/Navigation/HydrographicSurveys/>  
Service Layer Credits: World Topographic Map: Texas Parks & Wildlife, Esri, HERE, Garmin, INCREMENT P, USGS, METINASA, NGA, EPA, USDA  
World Imagery: Maxar  
World Ocean Base: Esri, GEBCO, Garmin, NaturalVue

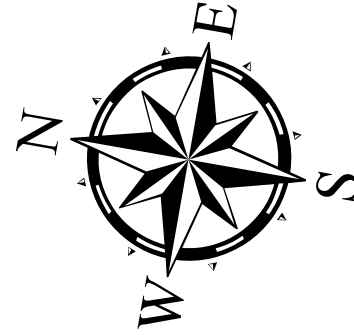
Additional Combined Survey Dates and Stationing:  
COMB\_SURV\_INFO\_HERE

Coordinate System: NAD 1983 StatePlane Texas South Central FIPS 4204 Feet  
Projection: Lambert Conformal Conic



HYDROGRAPHIC SURVEY

U.S. ARMY ENGINEER DISTRICT  
CORPS OF ENGINEERS  
GALVESTON, TEXAS  
Station: 740+00 to 1540+00  
CHANNEL TO VICTORIA  
Mile 14 to Mile 29



Latest Survey Collection Date: 13 May 2025  
Document Page: 5 of 14  
Scale: 1:2,800  
Mapped by: m3odnmhg  
Additional Imagery info:

Authorized Depth: -14ft.  
Width Range: 70ft to 125ft  
Side Slope Ratio: 1:3 (Rise : Run)  
PDF Print Date: 5/16/2025



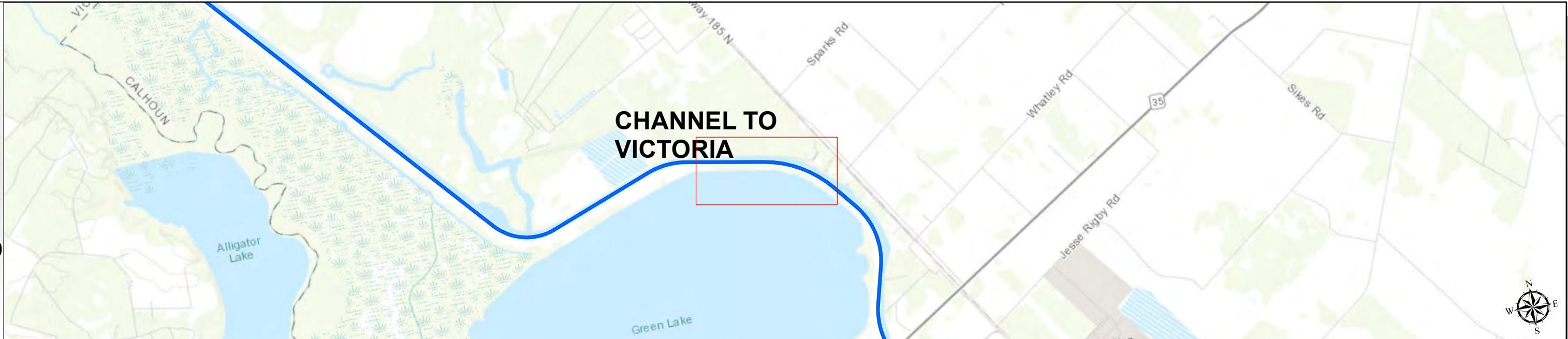
# Channel to Victoria: Mile 14 to Mile 29



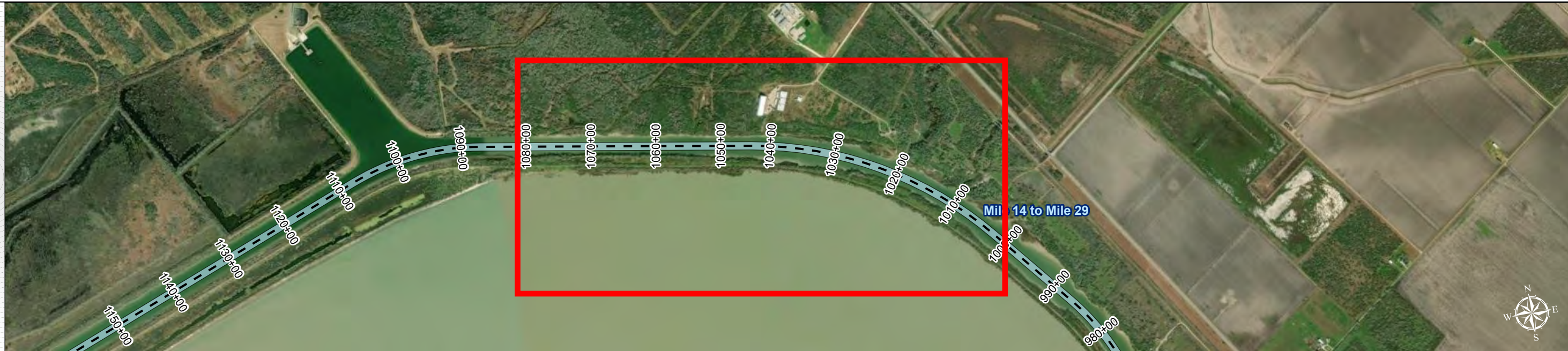
U.S. Army Corps of Engineers  
Galveston District



Regional Extent



Dredging Reach Extent



Channel Features

- Channel Center Line
- Channel Toe
- Channel Dimensions

Aids to Navigation

- Green Side Aids
- Red Side Aids
- Lights

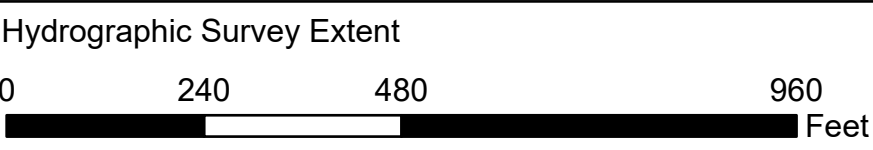
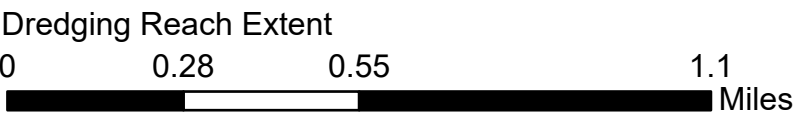
MLLW



NOTES:  
1. Horizontal coordinates are referenced to Texas State Plane Coordinate System, South Central Zone NAD83 US Survey Feet.  
2. Elevations are referenced to Mean Lower Low Water (MLLW) datum.  
3. This project was designed by the Galveston District of the U.S. Army Corps of Engineers. The initials and signatures and registration designations of individuals appear on these project documents within the scope of their employment as required by er1110-1-8102.  
4. The information depicted on this survey map represents the results of surveys made on the dates indicated and can only be considered as indicating the general conditions existing at that time. These conditions are subject to rapid change due to shoaling events. A prudent mariner should not rely exclusively on the information provided here. Required by 33 CFR 209.325  
5. For the most up to date information please check our website at: <http://www.svg.usace.army.mil/Missions/Navigation/HydrographicSurveys/>  
Service Layer Credits: World Topographic Map: Texas Parks & Wildlife, Esri, HERE, Garmin, INCREMENT P, USGS, METI/NASA, NGA, EPA, USDA  
World Imagery: Maxar  
World Ocean Base: Esri, GEBCO, Garmin, NaturalVue

Additional Combined Survey Dates and Stationing:  
COMB\_SURV\_INFO\_HERE

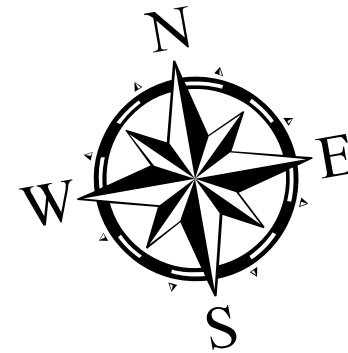
Coordinate System: NAD 1983 StatePlane Texas South Central FIPS 4204 Feet  
Projection: Lambert Conformal Conic



HYDROGRAPHIC SURVEY

U.S. ARMY ENGINEER DISTRICT  
CORPS OF ENGINEERS  
GALVESTON, TEXAS

Station: 740+00 to 1540+00  
CHANNEL TO VICTORIA  
Mile 14 to Mile 29



Latest Survey Collection Date: 13 May 2025

Document Page: 6 of 14

Website Index Number: 22

Scale: 1:2,800

Mapped by: m3odnmhg

Additional Imagery info:

Authorized Depth: -14ft.

Width Range: 70ft to 125ft

Side Slope Ratio: 1:3 (Rise : Run)

PDF Print Date: 5/16/2025

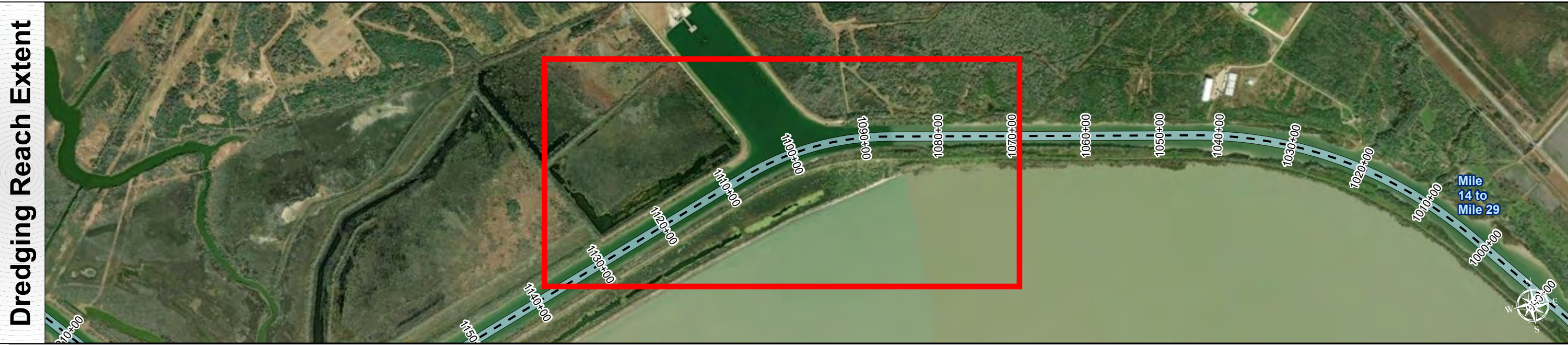


# Channel to Victoria: Mile 14 to Mile 29



U.S. Army Corps of Engineers  
Galveston District





**Channel Features**

- Channel Center Line
- Channel Toe
- Channel Dimensions

**Aids to Navigation**

- Green Side Aids
- Red Side Aids
- Lights

**MLLW**

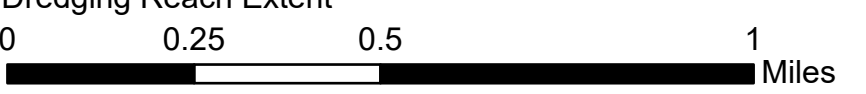
0 - 4	4 - 6	6 - 8	8 - 10	10 - 12	12 - 14	14 - 16	16 - 18	< 18
Dark Red	Red	Orange	Yellow	Light Green	Green	Blue-Green	Blue	Dark Blue

NOTES:  
1. Horizontal coordinates are referenced to Texas State Plane Coordinate System, South Central Zone NAD83 US Survey Feet.  
2. Elevations are referenced to Mean Lower Low Water (MLLW) datum.  
3. This project was designed by the Galveston District of the U.S. Army Corps of Engineers. The initials and signatures and registration designations of individuals appear on these project documents within the scope of their employment as required by er1110-1-8102.  
4. The information depicted on this survey map represents the results of surveys made on the dates indicated and can only be considered as indicating the general conditions existing at that time. These conditions are subject to rapid change due to shoaling events. A prudent mariner should not rely exclusively on the information provided here. Required by 33 or 209.325  
5. For the most up to date information please check our website at: <http://www.svg.usace.army.mil/Missions/Navigation/HydrographicSurveys/>  
Service Layer Credits: World Topographic Map: Texas Parks & Wildlife, Esri, HERE, Garmin, INCREMENT P, USGS, METINASA, NOAA, EPA, USDA  
World Imagery: Maxar, Microsoft  
World Imagery: Maxar  
World Ocean Base: Esri, GEBCO, Garmin, NaturalVue

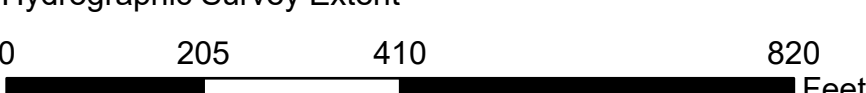
Additional Combined Survey Dates and Stationing:  
COMB\_SURV\_INFO\_HERE

Coordinate System: NAD 1983 StatePlane Texas South Central FIPS 4204 Feet  
Projection: Lambert Conformal Conic

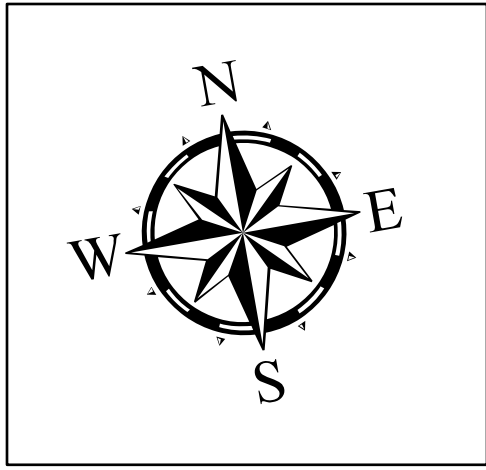
Dredging Reach Extent



Hydrographic Survey Extent



Latest Survey Collection Date: 13 May 2025	Authorized Depth: -14ft.
	Width Range: 70ft to 125ft
Document Page: 7 of 14	Side Slope Ratio: 1:3 (Rise : Run)
Scale: 1:2,400	PDF Print Date: 5/16/2025
Mapped by: m3odnmhg	
Additional Imagery info:	



**HYDROGRAPHIC SURVEY**  
U.S. ARMY ENGINEER DISTRICT  
CORPS OF ENGINEERS  
GALVESTON, TEXAS

**Station: 740+00 to 1540+00**  
**CHANNEL TO VICTORIA**  
Mile 14 to Mile 29



# Channel to Victoria: Mile 14 to Mile 29



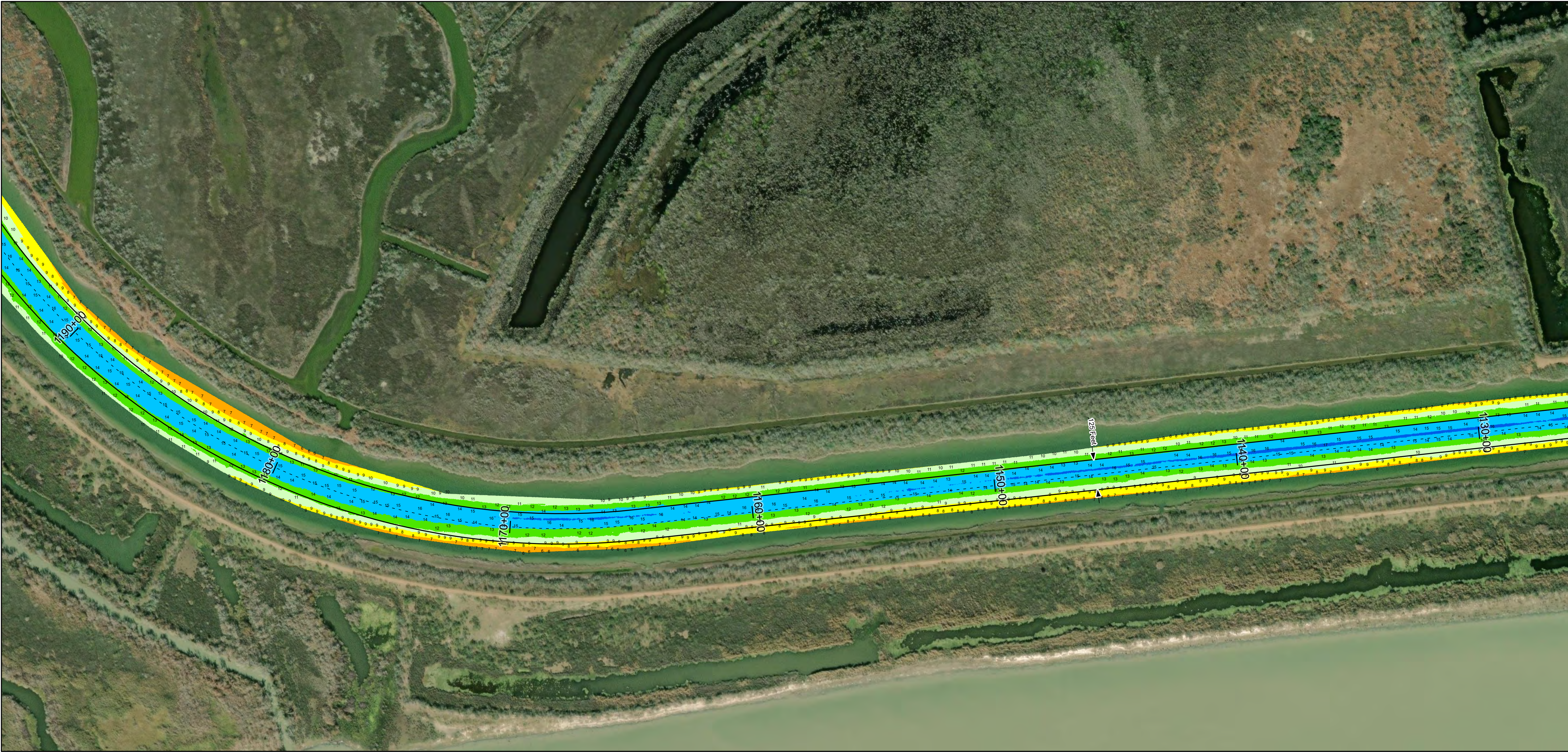
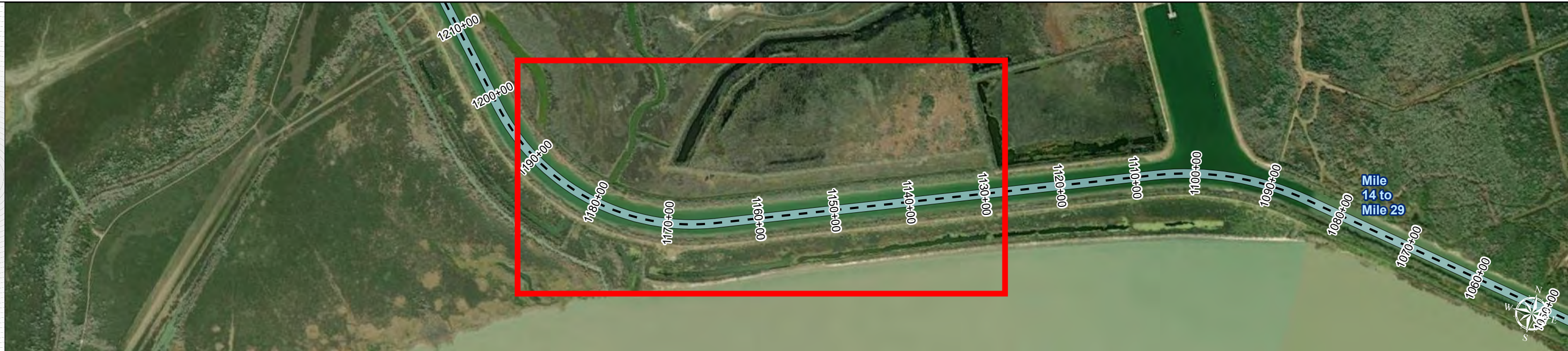
U.S. Army Corps of Engineers  
Galveston District



Regional Extent



Dredging Reach Extent



Channel Features

- Channel Center Line
- Channel Toe
- Channel Dimensions

Aids to Navigation

- Green Side Aids
- Red Side Aids
- Lights

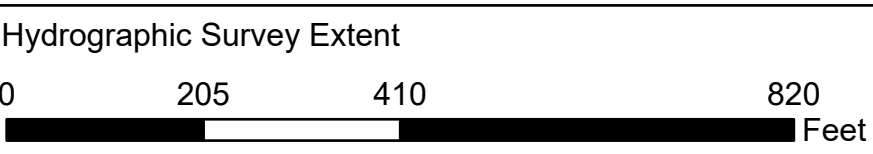
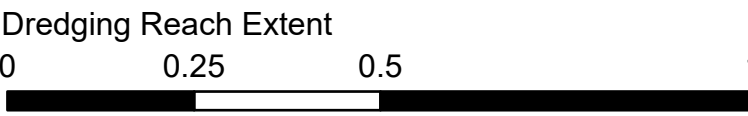
MLLW



NOTES:  
1. Horizontal coordinates are referenced to Texas State Plane Coordinate System, South Central Zone NAD83 US Survey Feet.  
2. Elevations are referenced to Mean Lower Low Water (MLLW) datum.  
3. This project was designed by the Galveston District of the U.S. Army Corps of Engineers. The initials and signatures and registration designations of individuals appear on these project documents within the scope of their employment as required by 47CFR 110.1-41.02.  
4. The information depicted on this survey map represents the results of surveys made on the dates indicated and can only be considered as indicating the general conditions existing at that time. These conditions are subject to rapid change due to shoaling events. A prudent mariner should not rely exclusively on the information provided here. Required by 33 CFR 209.325.  
5. For the most up to date information please check our website at: <http://www.svg.usace.army.mil/Missions/Navigation/HydrographicSurveys/>  
Service Layer Credits: World Topographic Map: Texas Parks & Wildlife, Esri, HERE, Garmin, INCREMENT P, USGS, METINASA, NGA, EPA, USDA  
World Imagery: Maxar, Microsoft  
World Imagery: Maxar  
World Ocean Base: Esri, GEBCO, Garmin, NaturalVue

Additional Combined Survey Dates and Stationing:  
COMB\_SURV\_INFO\_HERE

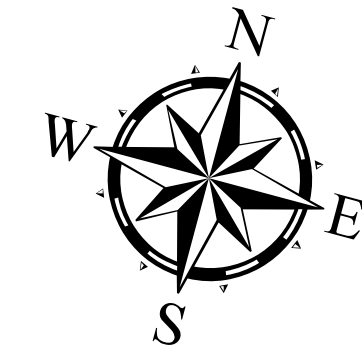
Coordinate System: NAD 1983 StatePlane Texas South Central FIPS 4204 Feet  
Projection: Lambert Conformal Conic



**HYDROGRAPHIC SURVEY**

U.S. ARMY ENGINEER DISTRICT  
CORPS OF ENGINEERS  
GALVESTON, TEXAS

Station: 740+00 to 1540+00  
CHANNEL TO VICTORIA  
Mile 14 to Mile 29



Latest Survey Collection Date: 13 May 2025

Document Page: 8 of 14

Website Index Number: 24

Authorized Depth: -14ft.

Width Range: 70ft to 125ft

Side Slope Ratio: 1:3 (Rise : Run)

PDF Print Date: 5/16/2025

Mapped by: m3odnmhg

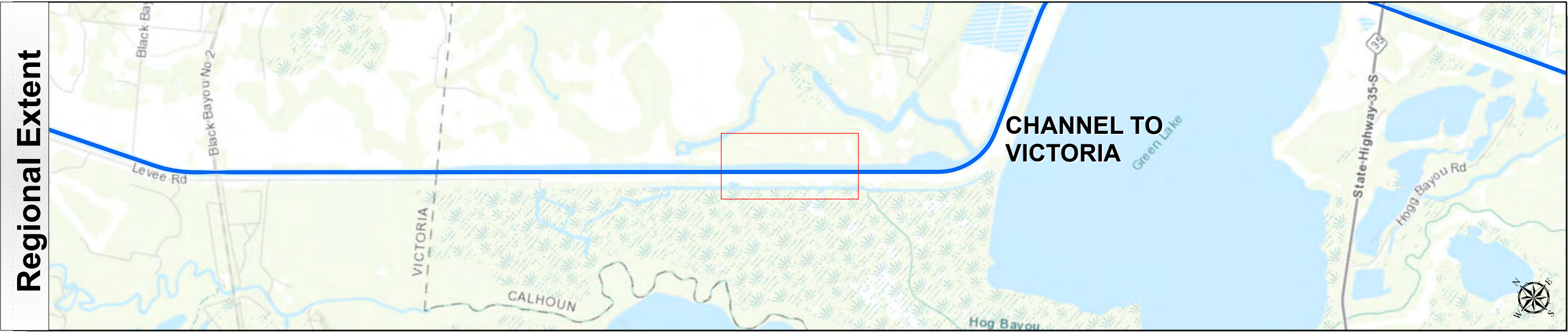
Additional Imagery info:







# Channel to Victoria: Mile 14 to Mile 29

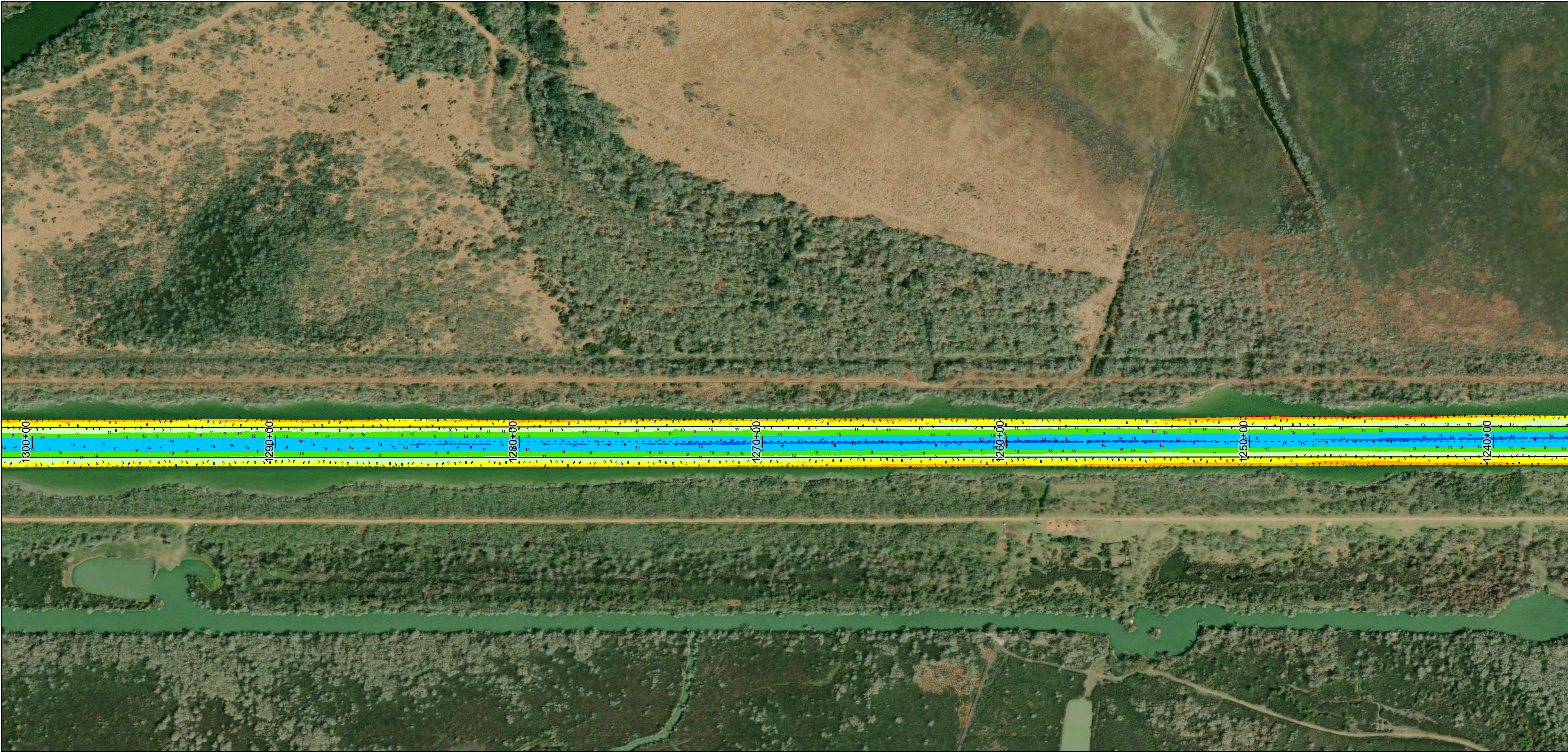




U.S. Army Corps of Engineers  
Galveston District



TEXAS



**Channel Features**

- Channel Center Line
- Channel Toe
- Channel Dimensions

**Aids to Navigation**

- Green Side Aids
- Red Side Aids
- Lights

**MLLW**

0 - 4	4 - 6	6 - 8	8 - 10	10 - 12	12 - 14	14 - 16	16 - 18	< 18
Red	Orange	Yellow	Light Green	Green	Dark Green	Blue	Dark Blue	Black

**NOTES:**

- Horizontal coordinates are referenced to Texas State Plane Coordinate System, South Central Zone NAD83 US Survey Feet.
- Elevations are referenced to Mean Lower Low Water (MLLW) datum.
- This project was designed by the Galveston District of the U.S. Army Corps of Engineers. The initials and signatures and registration designations of individuals appear on these project documents within the scope of their employment as required by 47 USC 203.325.
- The information depicted on this survey map represents the results of surveys made on the dates indicated and can only be considered as indicating the general conditions existing at that time. These conditions are subject to rapid change due to shoaling events. A prudent mariner should not rely exclusively on the information provided here. Required by 33 CFR 209.325.
- For the most up to date information please check our website at: <http://www.svg.usace.army.mil/Missions/Navigation/HydrographicSurveys/>

Service Layer Credits: World Topographic Map: Texas Parks & Wildlife, Esri, HERE, Garmin, INCREMENT P, USGS, MET/NASA, NOAA, EPA, USDA  
World Imagery: Maxar, Microsoft  
World Imagery: Maxar  
World Ocean Base: Esri, GEBCO, Garmin, NaturalVue

**Additional Combined Survey Dates and Stationing:**

COMB\_SURV\_INFO\_HERE

Coordinate System: NAD 1983 StatePlane Texas South Central FIPS 4204 Feet  
Projection: Lambert Conformal Conic

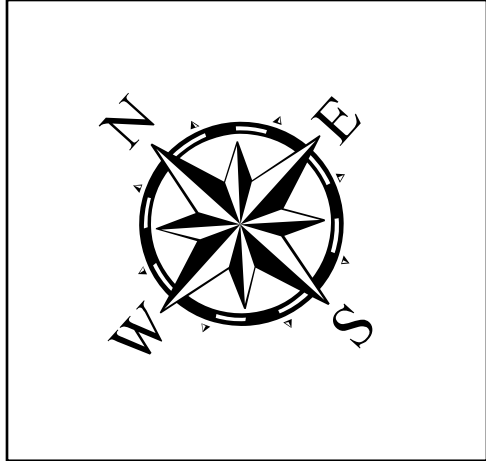
**Dredging Reach Extent**

0 0.25 0.5 1 Miles

**Hydrographic Survey Extent**

0 205 410 820 Feet

Latest Survey Collection Date: 13 May 2025	Authorized Depth: -14ft.	
	Width Range: 70ft to 125ft	
Document Page: 10 of 14	Side Slope Ratio: 1:3 (Rise : Run)	
Scale: 1:2,400	PDF Print Date: 5/16/2025	
Mapped by: m3odnmhg	Additional Imagery info:	



**HYDROGRAPHIC SURVEY**

U.S. ARMY ENGINEER DISTRICT  
CORPS OF ENGINEERS  
GALVESTON, TEXAS

**Station: 740+00 to 1540+00**

**CHANNEL TO VICTORIA**

Mile 14 to Mile 29



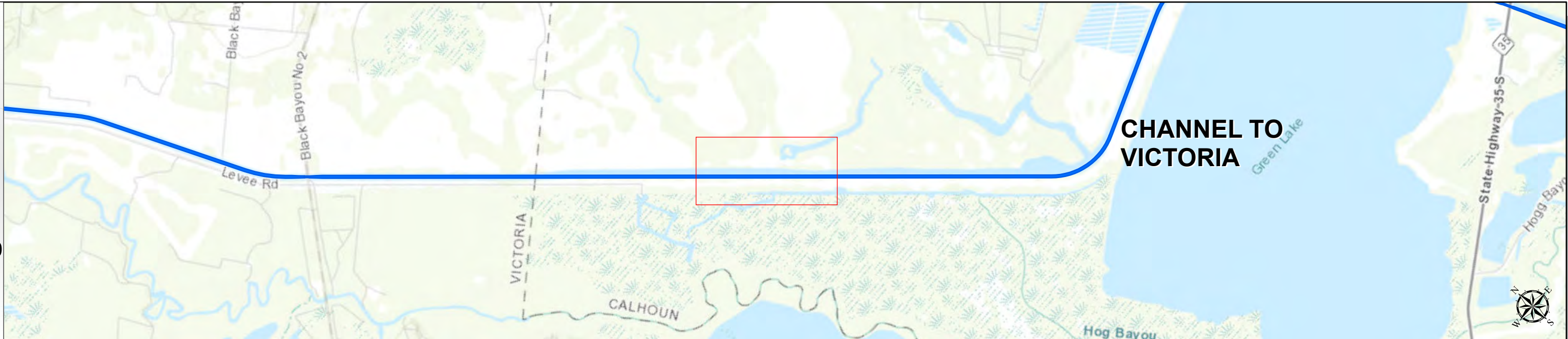
# Channel to Victoria: Mile 14 to Mile 29



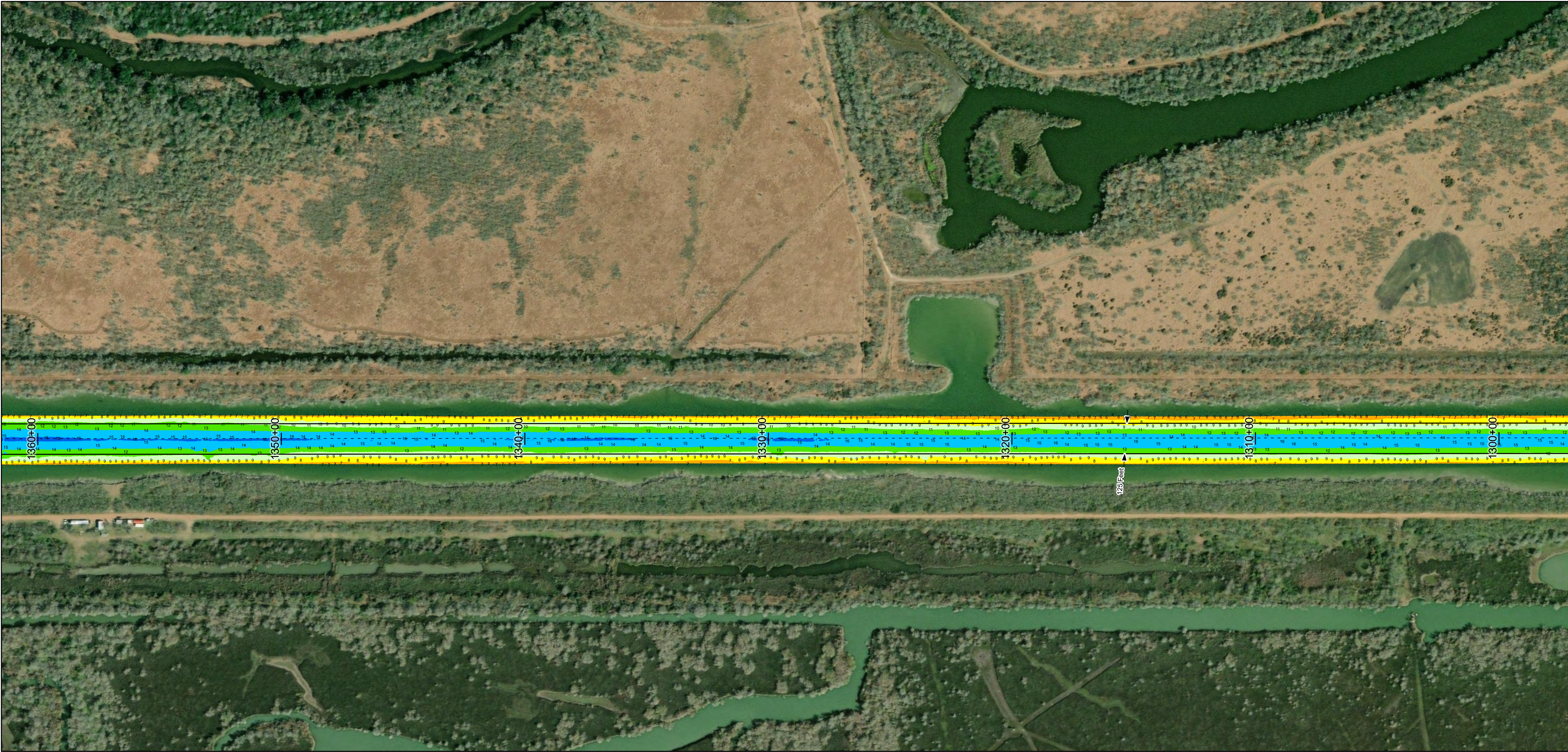
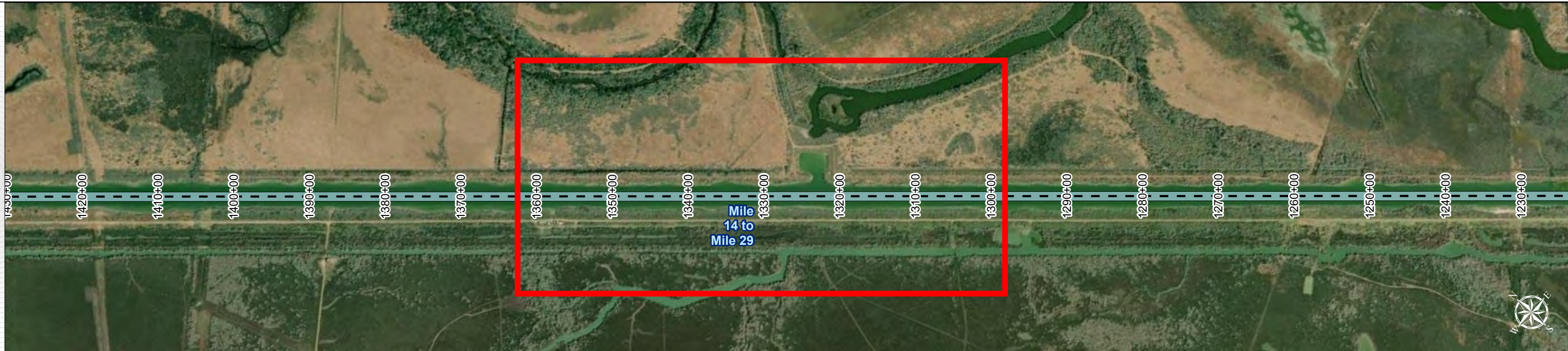
U.S. Army Corps of Engineers  
Galveston District



Regional Extent



Dredging Reach Extent



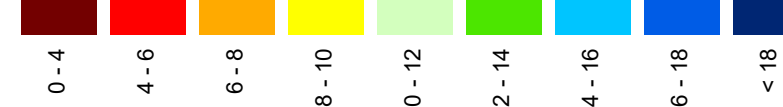
## Channel Features

- Channel Center Line
- Channel Toe
- Channel Dimensions

## Aids to Navigation

- Green Side Aids
- Red Side Aids
- Lights

## MLLW

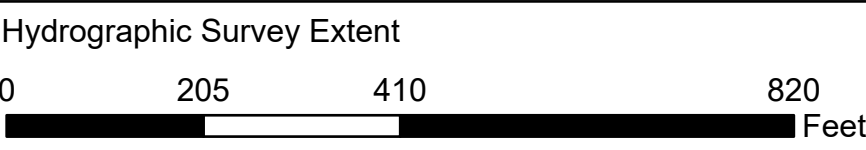
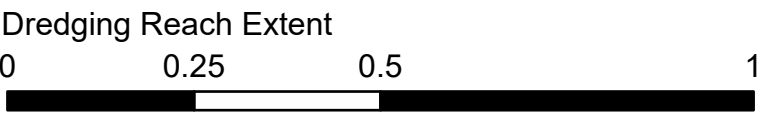


## NOTES:

- Horizontal coordinates are referenced to Texas State Plane Coordinate System, South Central Zone NAD83 US Survey Feet.
  - Elevations are referenced to Mean Lower Low Water (MLLW) datum.
  - This project was designed by the Galveston District of the U.S. Army Corps of Engineers. The initials and signatures and registration designations of individuals appear on these project documents within the scope of their employment as required by 47CFR110.1-4102.
  - The information depicted on this survey map represents the results of surveys made on the dates indicated and can only be considered as indicating the general conditions existing at that time. These conditions are subject to rapid change due to shoaling events. A prudent mariner should not rely exclusively on the information provided here. Required by 33 CFR 209.325
  - For the most up to date information please check our website at: <http://www.svg.usace.army.mil/Missions/Navigation/HydrographicSurveys/>
- Service Layer Credits: World Topographic Map: Texas Parks & Wildlife, Esri, HERE, Garmin, INCREMENT P, USGS, METI/NASA, NGA, EPA, USDA  
World Imagery: Maxar, Microsoft  
World Imagery: Maxar  
World Ocean Base: Esri, GEBCO, Garmin, NaturalVue

Additional Combined Survey Dates and Stationing:  
COMB\_SURV\_INFO\_HERE

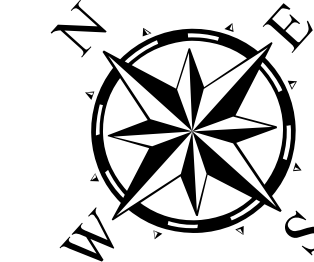
Coordinate System: NAD 1983 StatePlane Texas South Central FIPS 4204 Feet  
Projection: Lambert Conformal Conic



## HYDROGRAPHIC SURVEY

U.S. ARMY ENGINEER DISTRICT  
CORPS OF ENGINEERS  
GALVESTON, TEXAS

Station: 740+00 to 1540+00  
CHANNEL TO VICTORIA  
Mile 14 to Mile 29



Latest Survey Collection Date: 13 May 2025

Document Page: 11 of 14

Website Index Number: 27

Scale: 1:2,400

Mapped by: m3odnmhg

Additional Imagery info:

Authorized Depth: -14ft.

Width Range: 70ft to 125ft

Side Slope Ratio: 1:3 (Rise : Run)

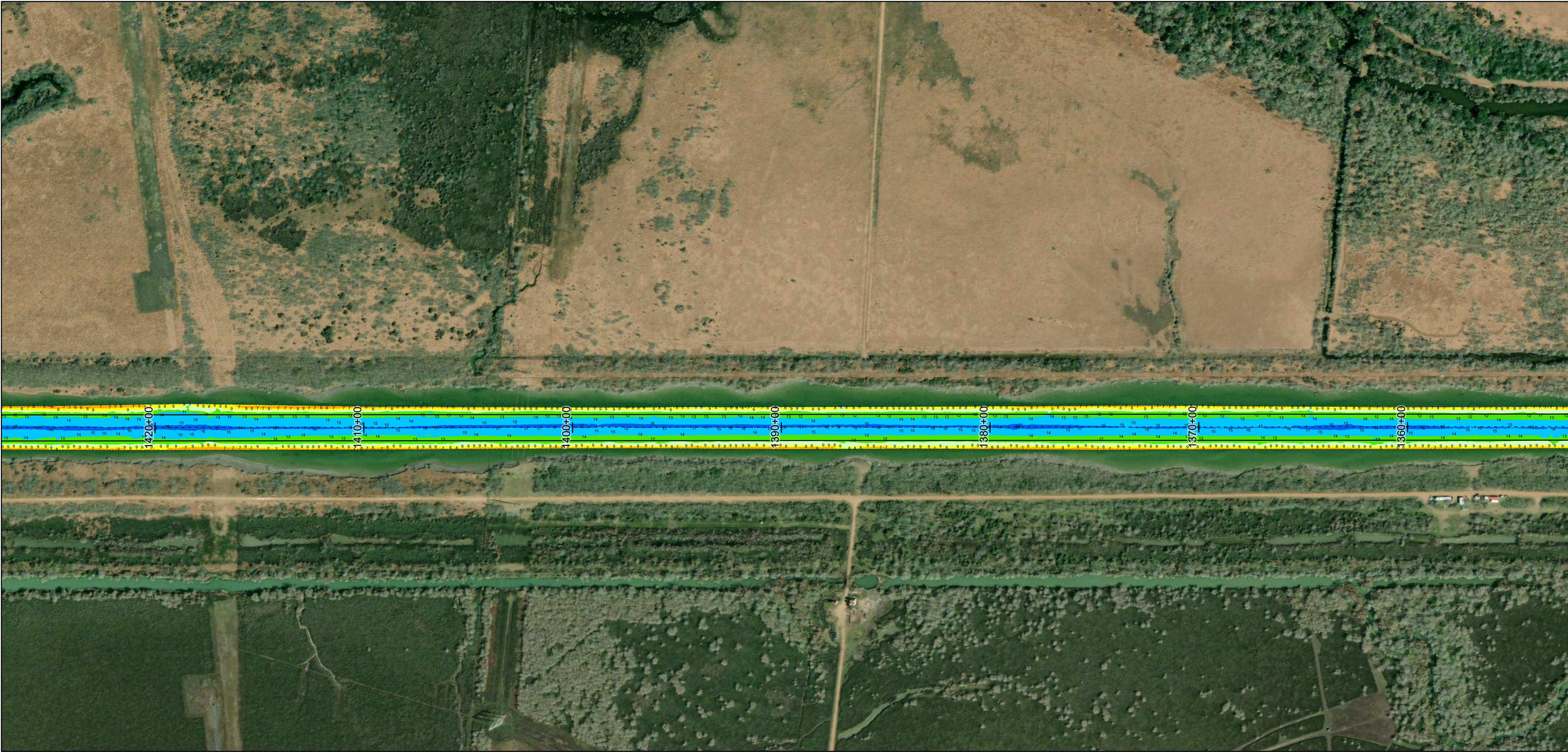
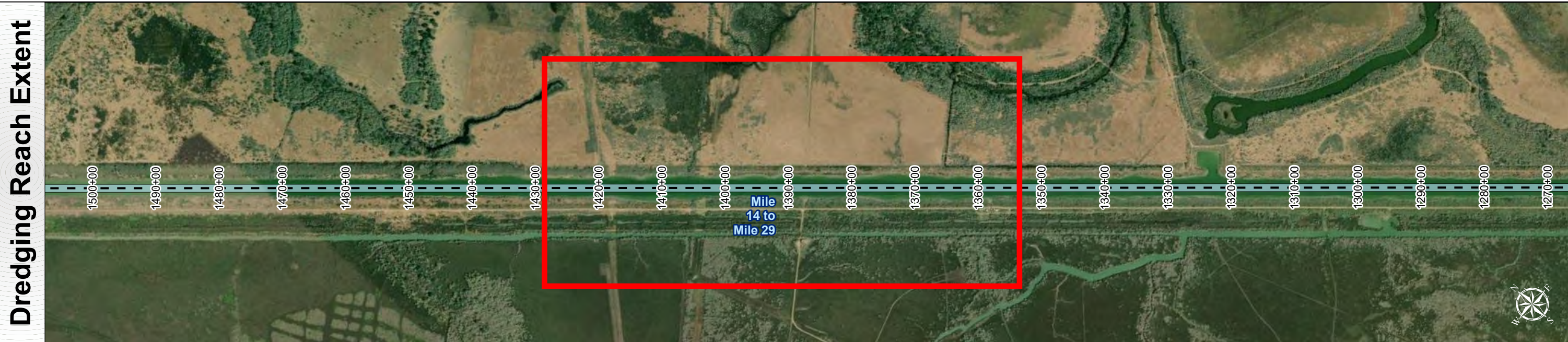
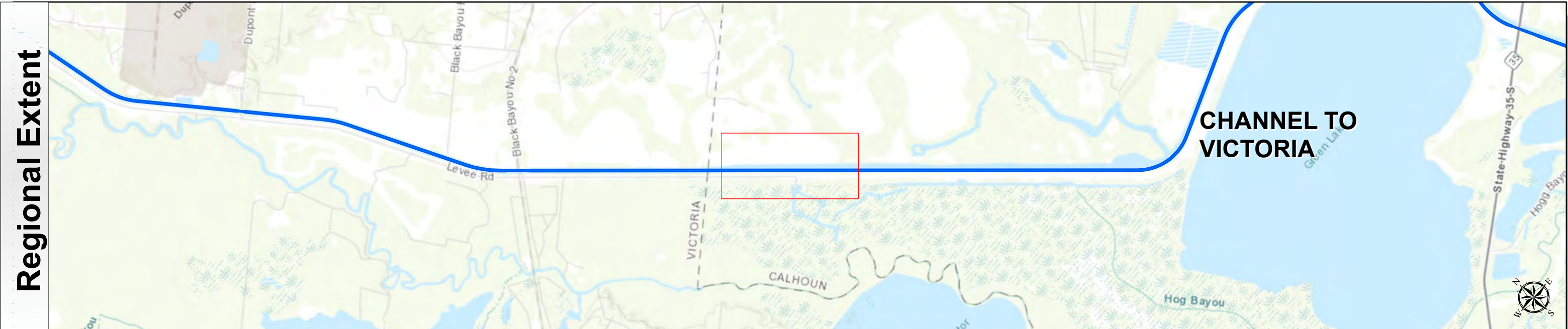
PDF Print Date: 5/16/2025



# Channel to Victoria: Mile 14 to Mile 29



U.S. Army Corps of Engineers  
Galveston District



**Channel Features**

- Channel Center Line
- Channel Toe
- Channel Dimensions

**Aids to Navigation**

- Green Side Aids
- Red Side Aids
- Lights

**MLLW**

0 - 4	4 - 6	6 - 8	8 - 10	10 - 12	12 - 14	14 - 16	16 - 18	< 18
Dark Blue	Blue	Light Blue	Green	Yellow	Orange	Red	Dark Red	Black

NOTES:  
1. Horizontal coordinates are referenced to Texas State Plane Coordinate System, South Central Zone NAD83 US Survey Feet.  
2. Elevations are referenced to Mean Lower Low Water (MLLW) datum.  
3. This project was designed by the Galveston District of the U.S. Army Corps of Engineers. The initials and signatures and registration designations of individuals appear on these project documents within the scope of their employment as required by er1110-1-4102.  
4. The information depicted on this survey map represents the results of surveys made on the dates indicated and can only be considered as indicating the general conditions existing at that time. These conditions are subject to rapid change due to shoaling events. A prudent mariner should not rely exclusively on the information provided here. Required by 33 CFR 200.325  
5. For the most up to date information please check our website at: <http://www.svg.usace.army.mil/Missions/Navigation/HydrographicSurveys/>  
Service Layer Credits: World Topographic Map: Texas Parks & Wildlife, Esri, HERE, Garmin, INCREMENT P, USGS, METINASA, NGA, EPA, USDA, World Imagery: Maxar, World Ocean Base: Esri, GEBCO, Garmin, NaturalVue

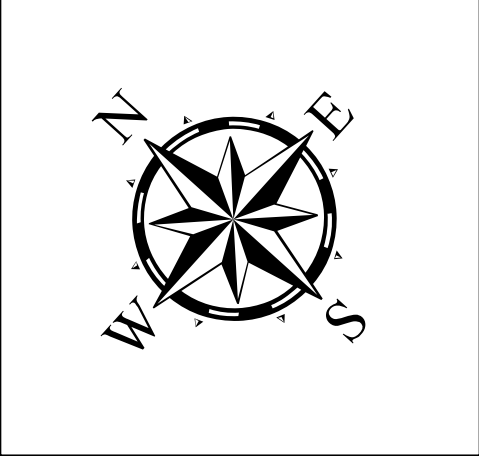
Additional Combined Survey Dates and Stationing:  
COMB\_SURV\_INFO\_HERE

Coordinate System: NAD 1983 StatePlane Texas South Central FIPS 4204 Feet  
Projection: Lambert Conformal Conic

Dredging Reach Extent  
0 0.28 0.55 1.1 Miles

Hydrographic Survey Extent  
0 240 480 960 Feet

Latest Survey Collection Date: 13 May 2025		Authorized Depth: -14ft.
Document Page: 12 of 14	Website Index Number: 28	Width Range: 70ft to 125ft.
Scale: 1:2,800		Side Slope Ratio: 1:3 (Rise : Run)
Mapped by: m3odnmhg		PDF Print Date: 5/16/2025
Additional Imagery info:		



**HYDROGRAPHIC SURVEY**  
U.S. ARMY ENGINEER DISTRICT  
CORPS OF ENGINEERS  
GALVESTON, TEXAS

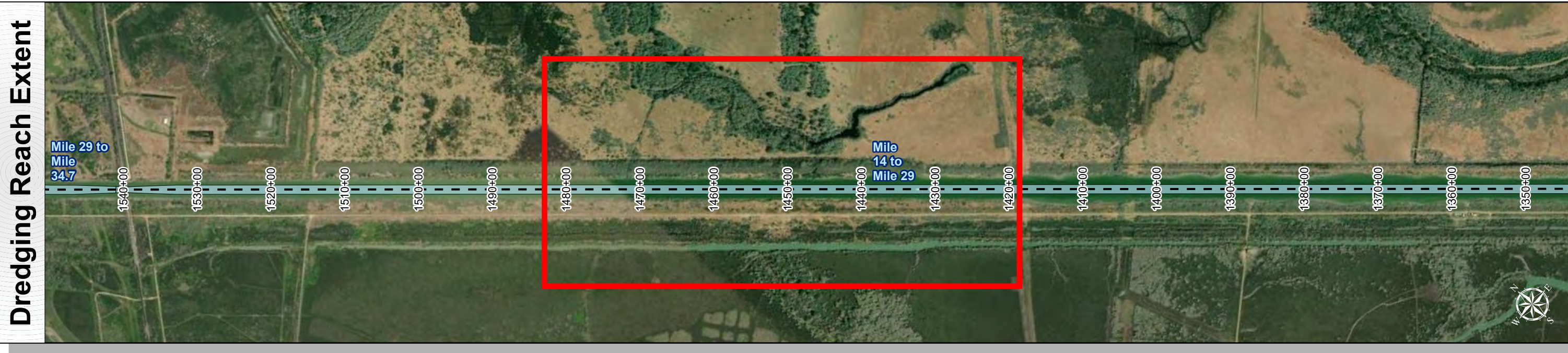
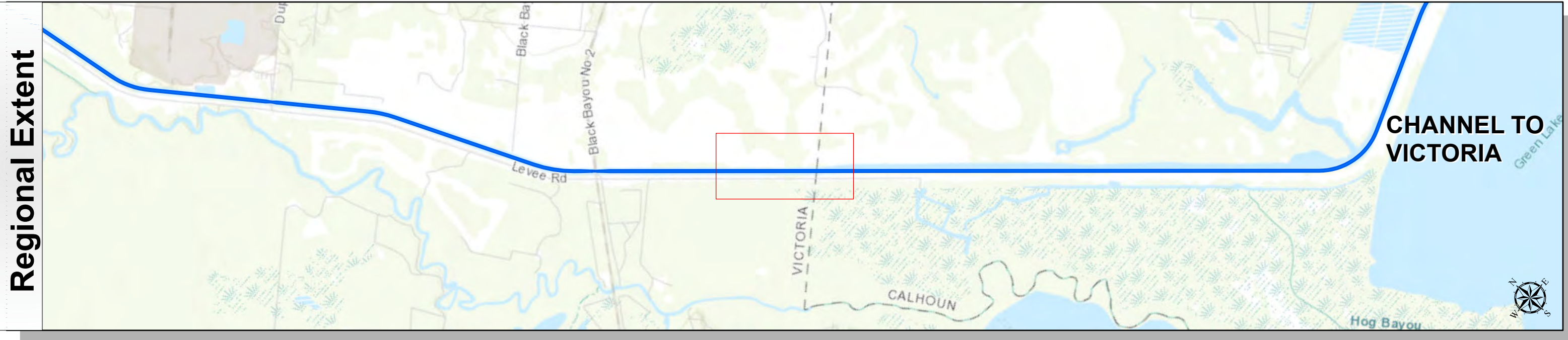
**Station: 740+00 to 1540+00**  
**CHANNEL TO VICTORIA**  
Mile 14 to Mile 29



# Channel to Victoria: Mile 14 to Mile 29



U.S. Army Corps of Engineers  
Galveston District



**Channel Features**

Channel Center Line

Channel Toe

Channel Dimensions

**Aids to Navigation**

Green Side Aids

Red Side Aids

Lights

**MLLW**

NOTES:  
1. Horizontal coordinates are referenced to Texas State Plane Coordinate System, South Central Zone NAD83 US Survey Feet.  
2. Elevations are referenced to Mean Lower Low Water (MLLW) datum.  
3. This project was designed by the Galveston District of the U.S. Army Corps of Engineers. The initials and signatures and registration designations of individuals appear on these project documents within the scope of their employment as required by er1110-1-8102.  
4. The information depicted on this survey map represents the results of surveys made on the dates indicated and can only be considered as indicating the general conditions existing at that time. These conditions are subject to rapid change due to shoaling events. A prudent mariner should not rely exclusively on the information provided here. Required by 33 CFR 209.325  
5. For the most up to date information please check our website at: <http://www.svg.usace.army.mil/Missions/Navigation/HydrographicSurveys/>  
Service Layer Credits: World Topographic Map: Texas Parks & Wildlife, Esri, HERE, Garmin, INCREMENT P, USGS, METI/NASA, NGA, EPA, USDA  
World Imagery: Maxar, Microsoft  
World Imagery: Maxar  
World Ocean Base: Esri, GEBCO, Garmin, NaturalVue

Additional Combined Survey Dates and Stationing:  
COMB\_SURV\_INFO\_HERE

Coordinate System: NAD 1983 StatePlane Texas South Central FIPS 4204 Feet  
Projection: Lambert Conformal Conic

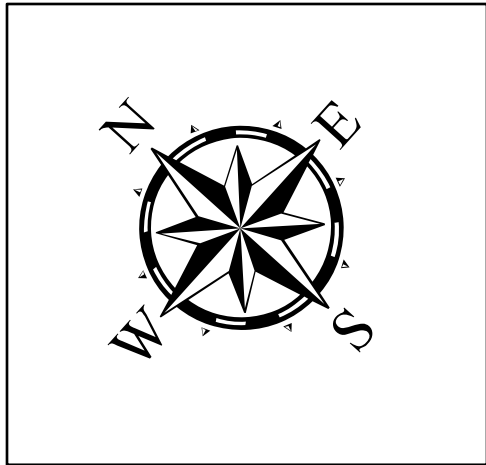
Dredging Reach Extent

Miles

Hydrographic Survey Extent

Feet

Latest Survey Collection Date: 13 May 2025		Authorized Depth: -14ft.
Document Page: 13 of 14	Website Index Number: 29	Width Range: 70ft to 125ft
Scale: 1:2,400		Side Slope Ratio: 1:3 (Rise : Run)
Mapped by: m3odnmhg		PDF Print Date: 5/16/2025
Additional Imagery info:		



**HYDROGRAPHIC SURVEY**

U.S. ARMY ENGINEER DISTRICT  
CORPS OF ENGINEERS  
GALVESTON, TEXAS

Station: 740+00 to 1540+00

CHANNEL TO VICTORIA

Mile 14 to Mile 29



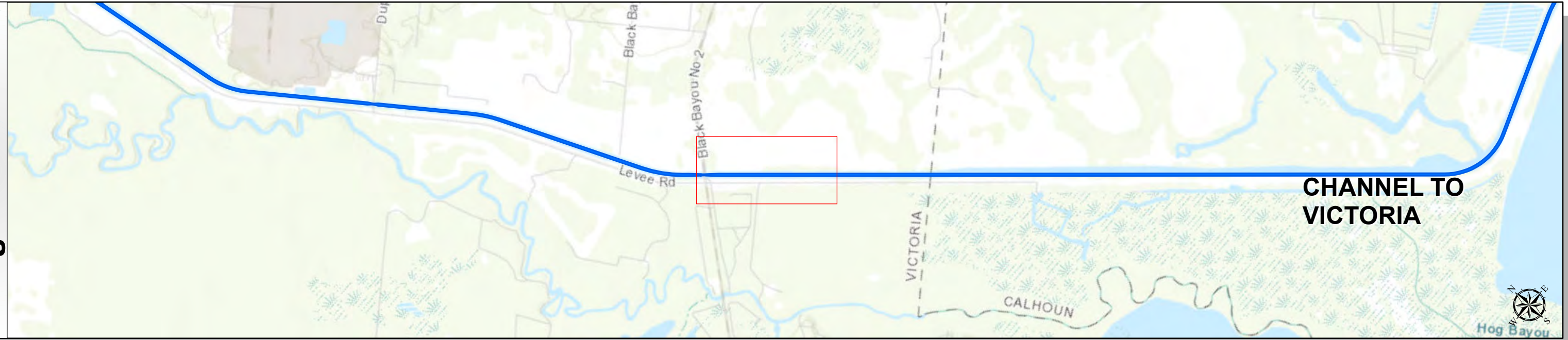
# Channel to Victoria: Mile 14 to Mile 29



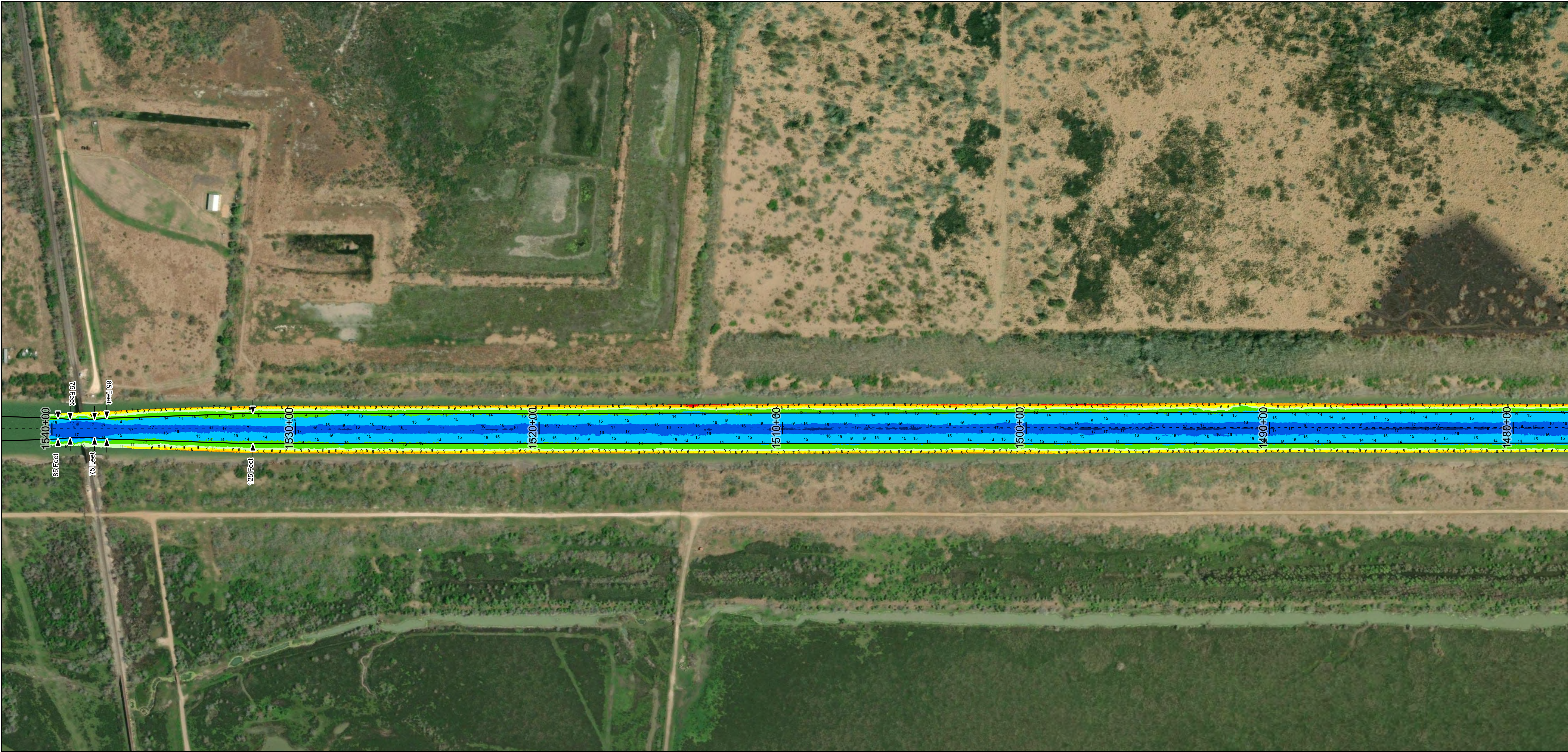
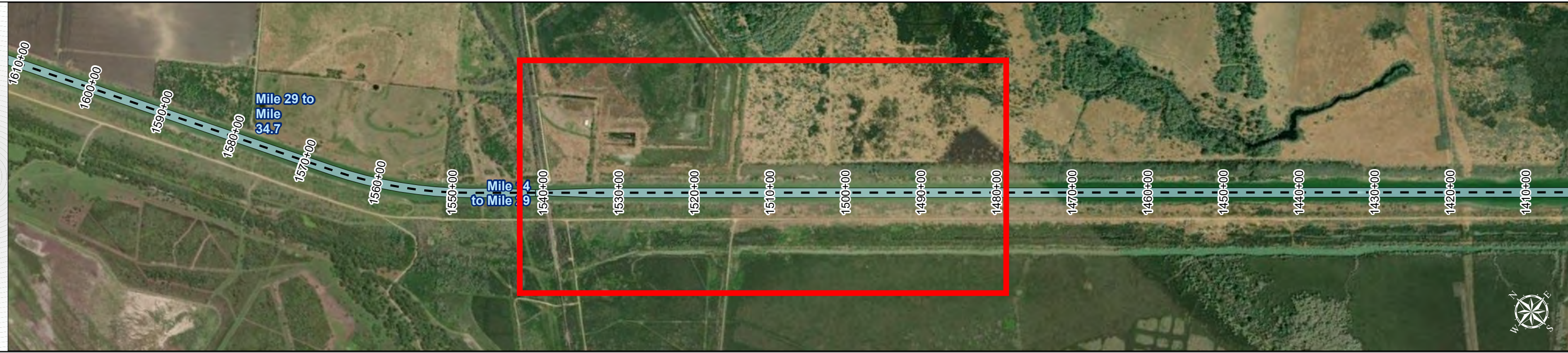
U.S. Army Corps of Engineers  
Galveston District



Regional Extent



Dredging Reach Extent



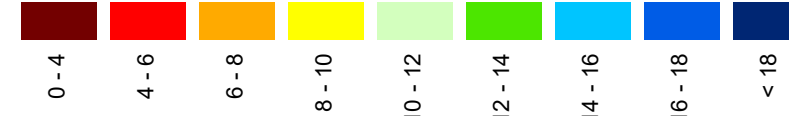
## Channel Features

- Channel Center Line
- Channel Toe
- Channel Dimensions

## Aids to Navigation

- Green Side Aids
- Red Side Aids
- Lights

## MLLW



## NOTES:

- Horizontal coordinates are referenced to Texas State Plane Coordinate System, South Central Zone NAD83 US Survey Feet.
  - Elevations are referenced to Mean Lower Low Water (MLLW) datum.
  - This project was designed by the Galveston District of the U.S. Army Corps of Engineers. The initials and signatures and registration designations of individuals appear on these project documents within the scope of their employment as required by 47CFR 110.1-4102.
  - The information depicted on this survey map represents the results of surveys made on the dates indicated and can only be considered as indicating the general conditions existing at that time. These conditions are subject to rapid change due to shoaling events. A prudent mariner should not rely exclusively on the information provided here. Required by 33 CFR 209.325
  - For the most up to date information please check our website at: <http://www.svg.usace.army.mil/Missions/Navigation/HydrographicSurveys/>
- Service Layer Credits: World Topographic Map: Texas Parks & Wildlife, Esri, HERE, Garmin, INCREMENT P, USGS, METI/NASA, NGA, EPA, USDA  
World Imagery: Maxar, Microsoft  
World Imagery: Maxar  
World Ocean Base: Esri, GEBCO, Garmin, NaturalVue

Additional Combined Survey Dates and Stationing:  
COMB\_SURV\_INFO\_HERE

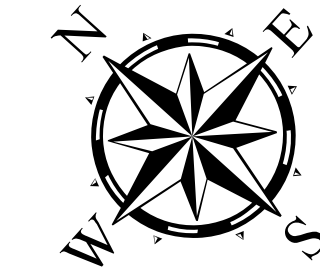
Coordinate System: NAD 1983 StatePlane Texas South Central FIPS 4204 Feet  
Projection: Lambert Conformal Conic

Dredging Reach Extent  
0 0.25 0.5 1 Miles

Hydrographic Survey Extent  
0 205 410 820 Feet

## HYDROGRAPHIC SURVEY

U.S. ARMY ENGINEER DISTRICT  
CORPS OF ENGINEERS  
GALVESTON, TEXAS  
Station: 740+00 to 1540+00  
CHANNEL TO VICTORIA  
Mile 14 to Mile 29



Latest Survey Collection Date: 13 May 2025  
Document Page: 14 of 14  
Scale: 1:2,400  
Mapped by: m3odnmhg  
Additional Imagery info:

Authorized Depth: -14ft.

Width Range: 70ft to 125ft

Side Slope Ratio: 1:3 (Rise : Run)

PDF Print Date: 5/16/2025