


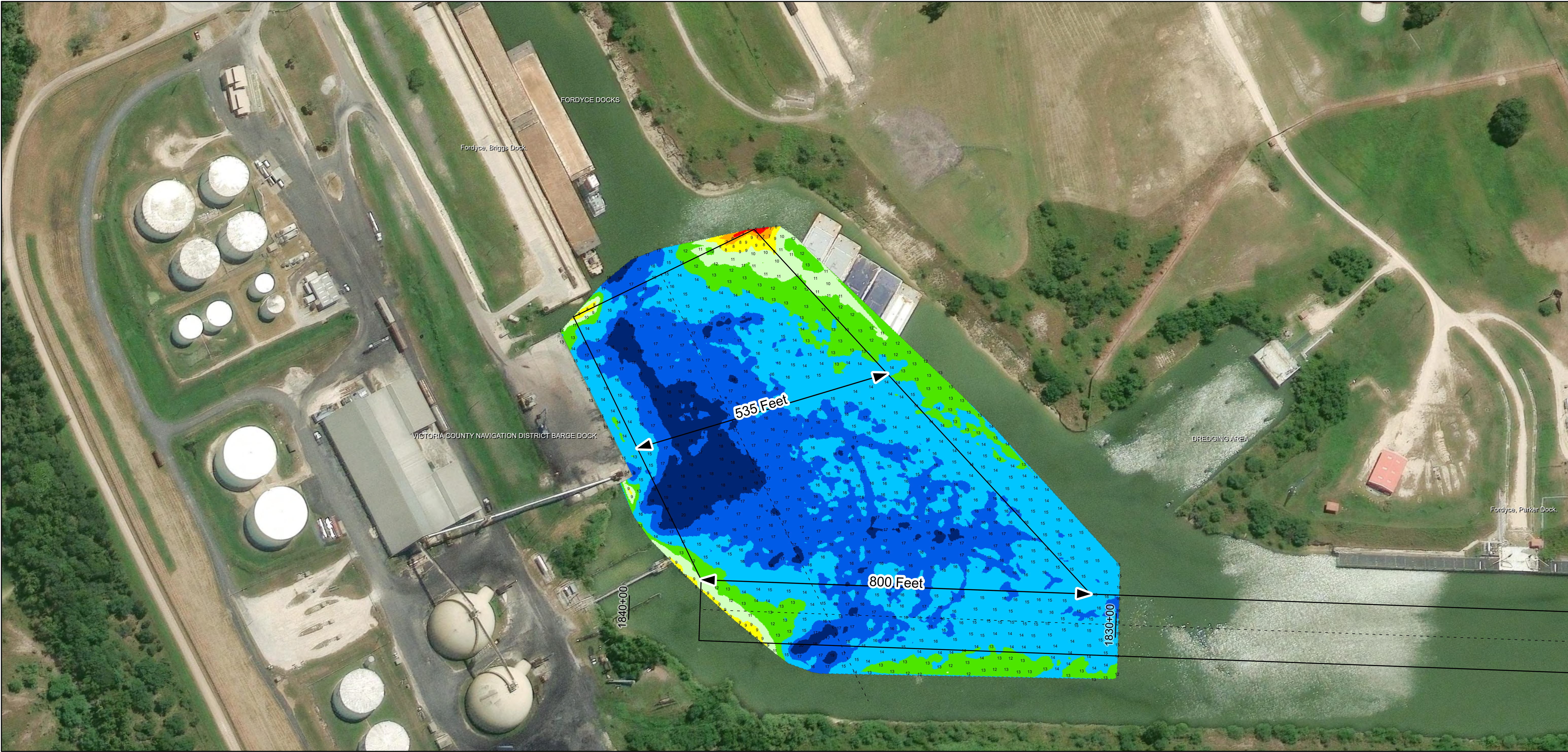
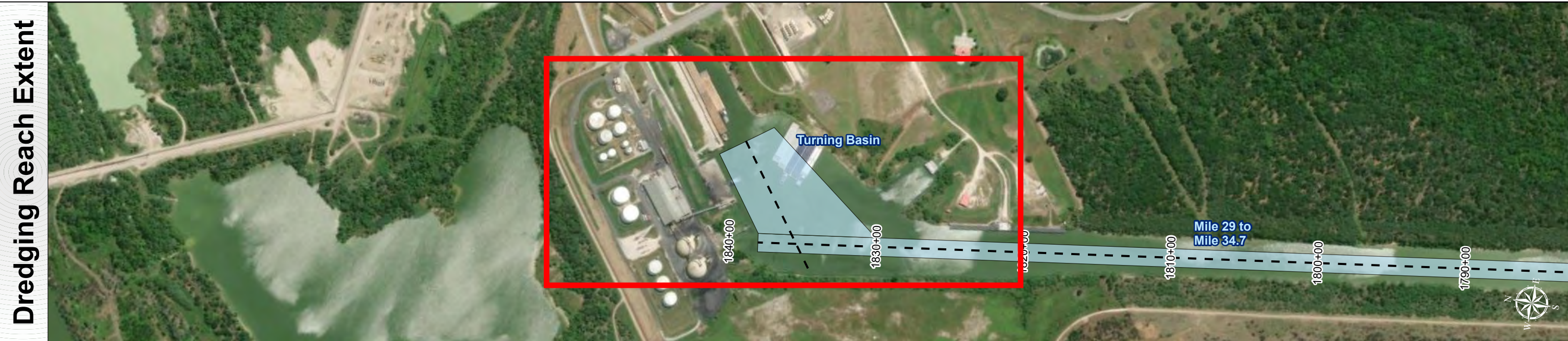
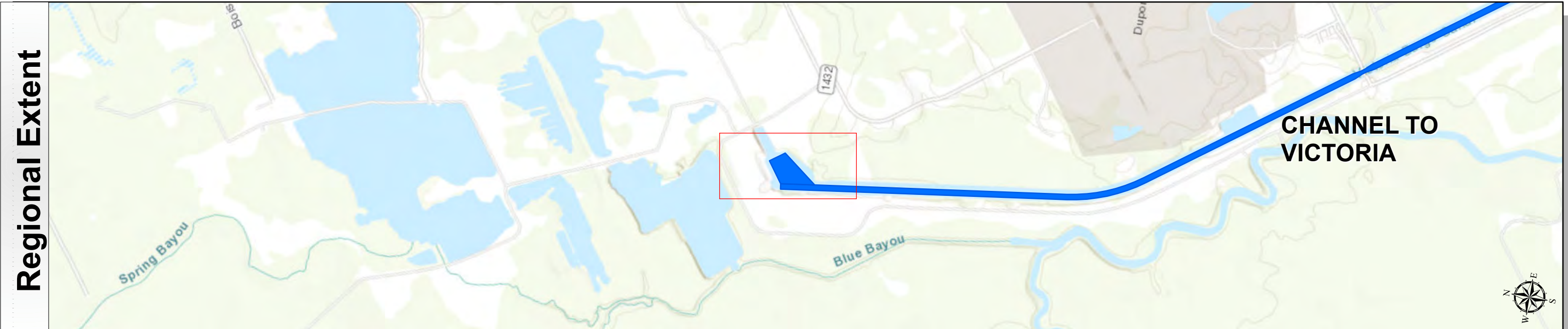
Channel to Victoria: Turning Basin



U.S. Army Corps of Engineers
Galveston District



TEXAS



Channel Features

- Channel Center Line
- Channel Toe
- Channel Dimensions

Aids to Navigation

- Green Side Aids
- Red Side Aids
- Lights

MLLW

0 - 4	4 - 6	6 - 8	8 - 10	10 - 12	12 - 14	14 - 16	16 - 18	< 18
Red	Orange	Yellow	Light Green	Green	Dark Green	Blue	Dark Blue	Black

NOTES:
1. Horizontal coordinates are referenced to Texas State Plane Coordinate System, South Central Zone NAD83 U.S. Survey Feet.
2. Elevations are referenced to Mean Lower Low Water (MLLW) datum.
3. This project was designed by the Galveston District of the U.S. Army Corps of Engineers. The initials and signatures and registration designations of individuals appear on these project documents within the scope of their employment as required by 47CFR 110.1-41.02.
4. The information depicted on this survey map represents the results of surveys made on the dates indicated and can only be considered as indicating the general conditions existing at that time. These conditions are subject to rapid change due to shoaling events. A prudent mariner should not rely exclusively on the information provided here. Required by 33 or 209.325
5. For the most up to date information please check our website at: <http://www.svg.usace.army.mil/Missions/Navigation/HydrographicSurveys/>

Service Layer Credits: World Topographic Map: Texas Parks & Wildlife, Esri, HERE, Garmin, INCREMENT P, USGS, METINASA, EPA, USDA
World Imagery: Maxar, Microsoft
World Imagery: Maxar
World Ocean Base: Esri, GEBCO, Garmin, NaturalVue

Additional Combined Survey Dates and Stationing:
COMB_SURV_INFO_HERE

Coordinate System: NAD 1983 StatePlane Texas South Central FIPS 4204 Feet
Projection: Lambert Conformal Conic

Dredging Reach Extent

0 0.13 0.25 0.5 Miles

Hydrographic Survey Extent

0 100 200 400 Feet

Coordinate System: NAD 1983 StatePlane Texas South Central FIPS 4204 Feet
Projection: Lambert Conformal Conic

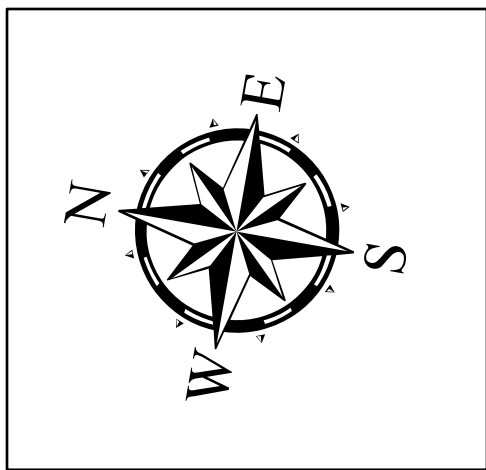
Dredging Reach Extent

0 0.13 0.25 0.5 Miles

Hydrographic Survey Extent

0 100 200 400 Feet

Latest Survey Collection Date: 13 May 2025		Authorized Depth: -14ft.
Document Page: 1 of 1	Website Index Number: 38	Width Range: 400ft to 800ft
Scale: 1:1,200		Side Slope Ratio: 1:3 (Rise : Run)
Mapped by: m3odnmhg		PDF Print Date: 5/16/2025
Additional Imagery info:		



HYDROGRAPHIC SURVEY
U.S. ARMY ENGINEER DISTRICT
CORPS OF ENGINEERS
GALVESTON, TEXAS

Station: 0+00 to 7+13.26
Channel to Victoria
Turning Basin