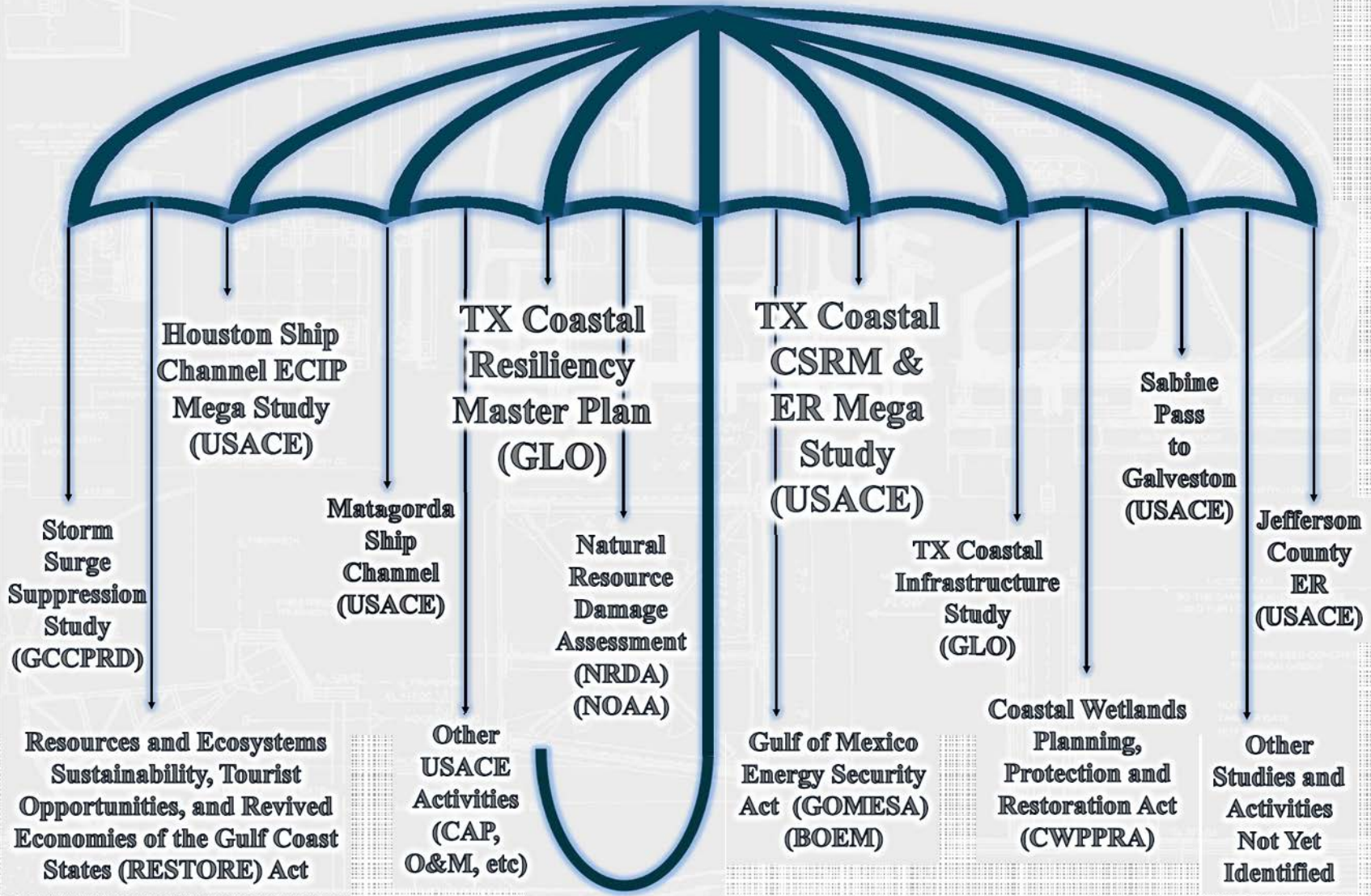


Coastal Texas Protection and Restoration Study

Originally enacted by Congress in 2004 and required USACE to “develop a comprehensive plan for severe erosion along coastal Texas for the purposes of shoreline erosion and coastal storm damages, providing for environmental restoration and protection, increasing natural sediment supply to coast, restoring and preserving marshes and wetlands, improving water quality, and other related purposes to the interrelated ecosystem along the coastal Texas area.

Comprehensive Plan: Overarching Vision



Gulf Coast Community Protection and Recovery District (GCCPRD)

Purpose: To investigate the feasibility of reducing the vulnerability of the upper Texas coast to hurricane surge and flood damages.

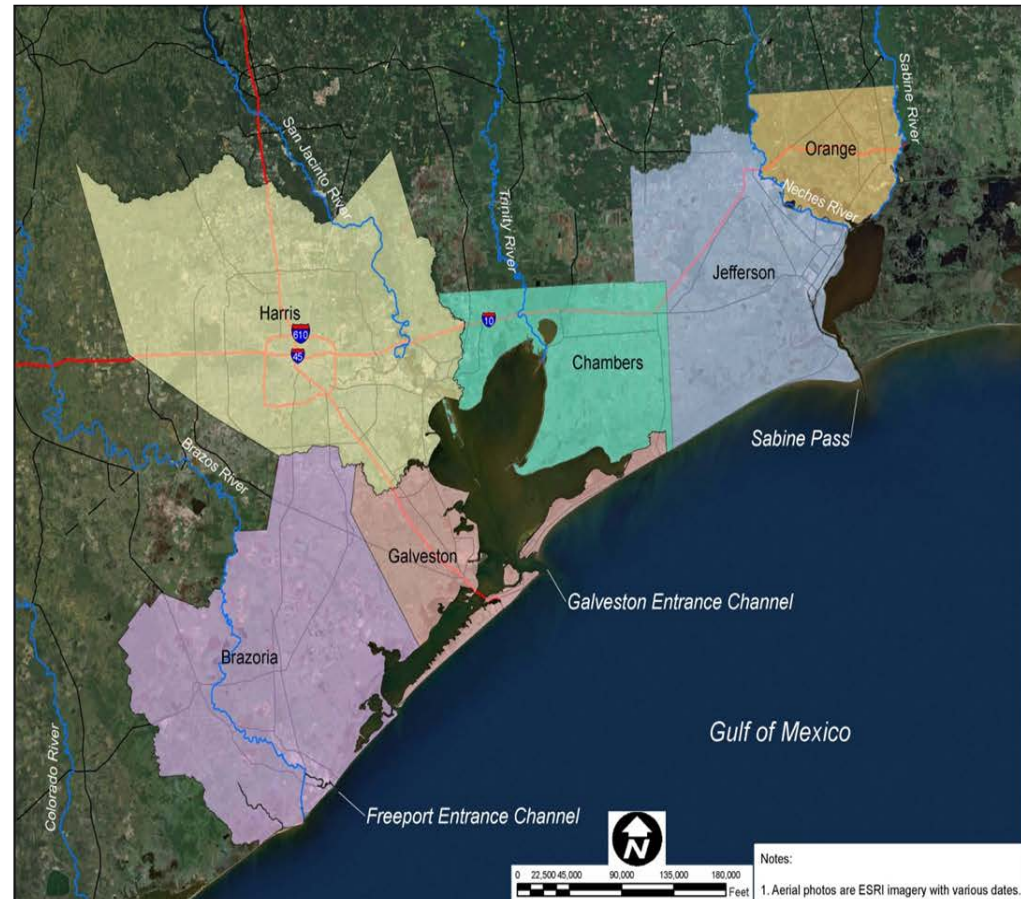
Phase 1: Data Collection

Phase 2: Modeling & BCR Analysis

Phase 3: Public Outreach and Project Recommendation

Phase 4: System Optimization, Preliminary Environmental, Geotechnical and Cost Refinement

Website: <http://gccprd.com/>



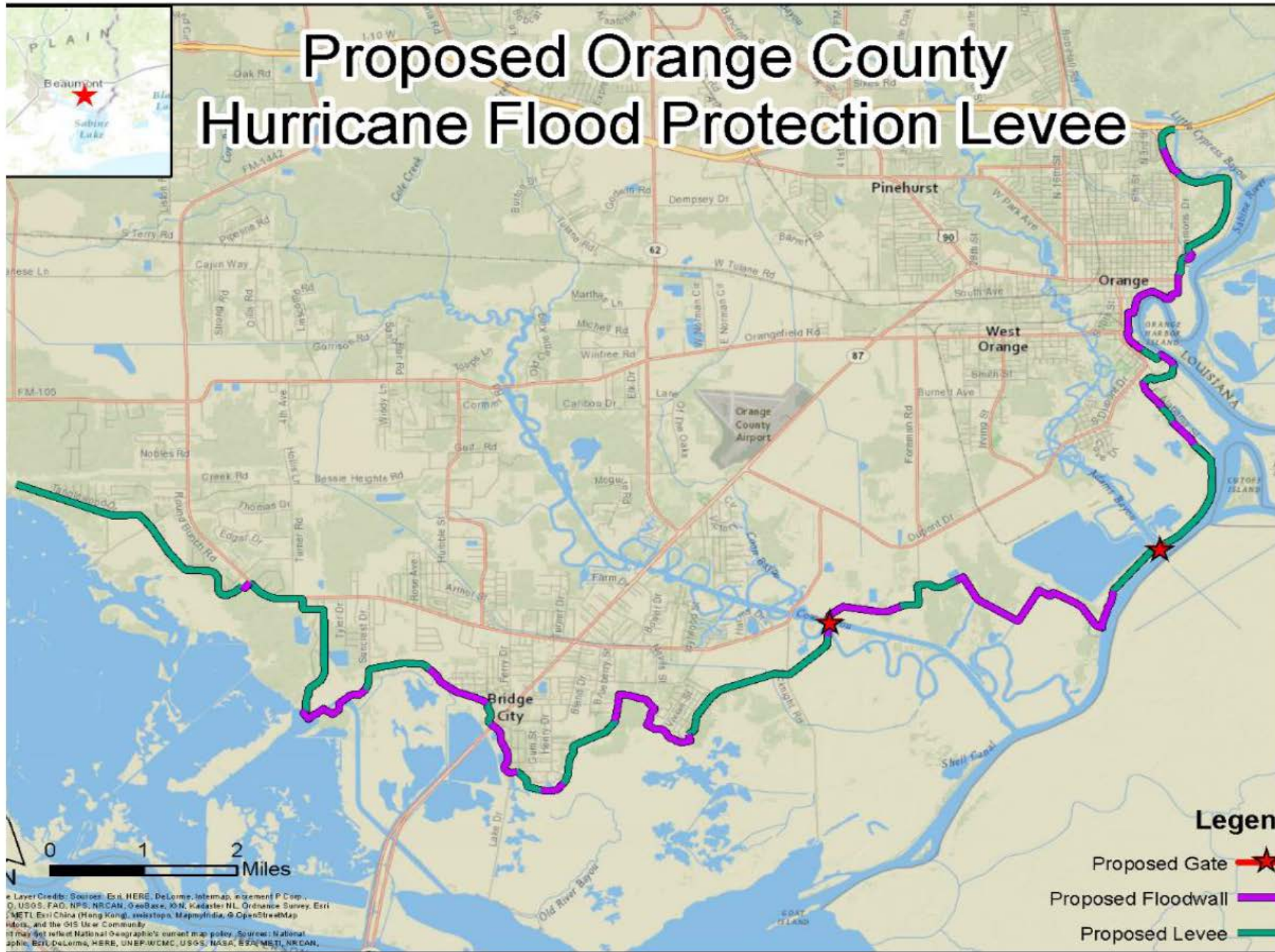
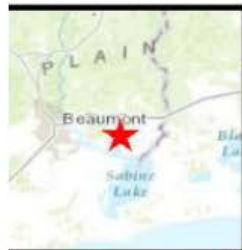
SABINE TO GALVESTON STUDY

Recommended upgrades to existing coastal storm risk management systems in Brazoria and Jefferson counties and the construction of a new coastal storm risk management system for Orange County.

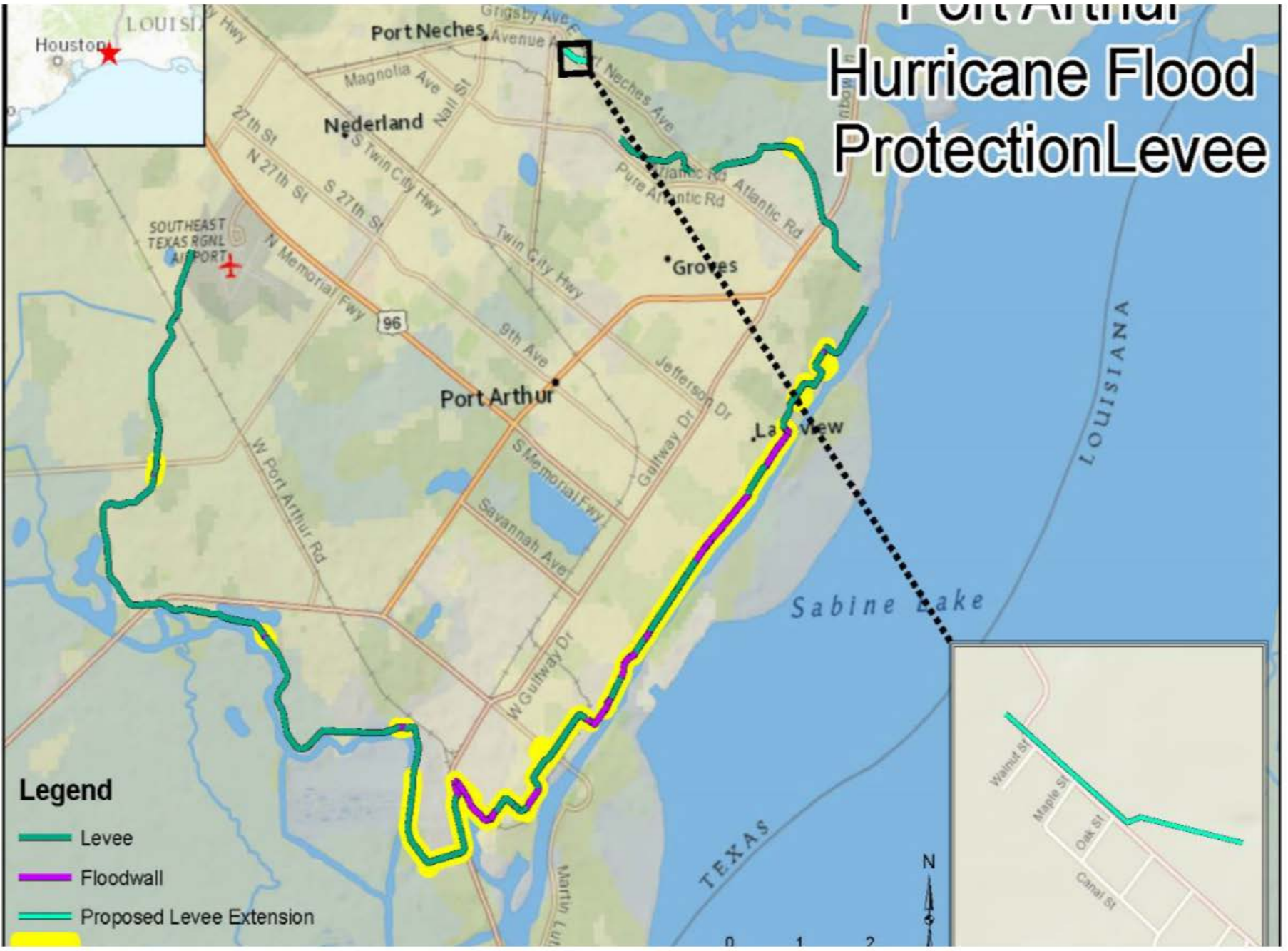
Study Completed by USACE in 2017

Funded by US Congress in 2018

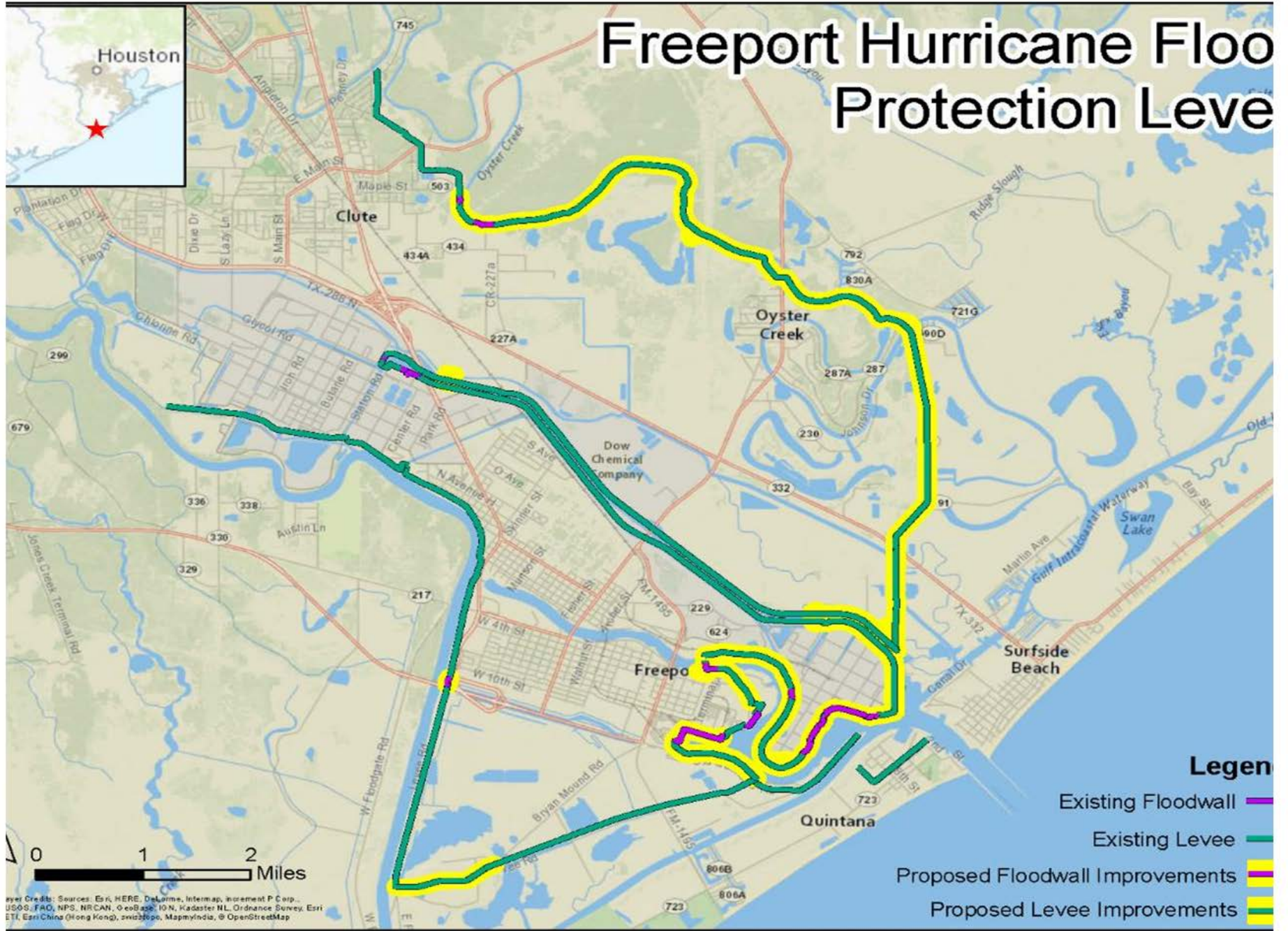
Proposed Orange County Hurricane Flood Protection Levee



Port Arthur Hurricane Flood Protection Levee



Freeport Hurricane Floo Protection Leve



Legend

- Existing Floodwall (purple line)
- Existing Levee (green line)
- Proposed Floodwall Improvements (yellow line)
- Proposed Levee Improvements (orange line)

ayer Credits: Sources: Esri, HERE, DeLorme, Intermap, increment P Corp., USGS, FAO, NPS, NRCAN, © eoBass, © N, Kadaster NL, Ordnance Survey, Esri, ETI, Earth China (Hong Kong), swisstopo, MapmyIndia, © OpenStreetMap

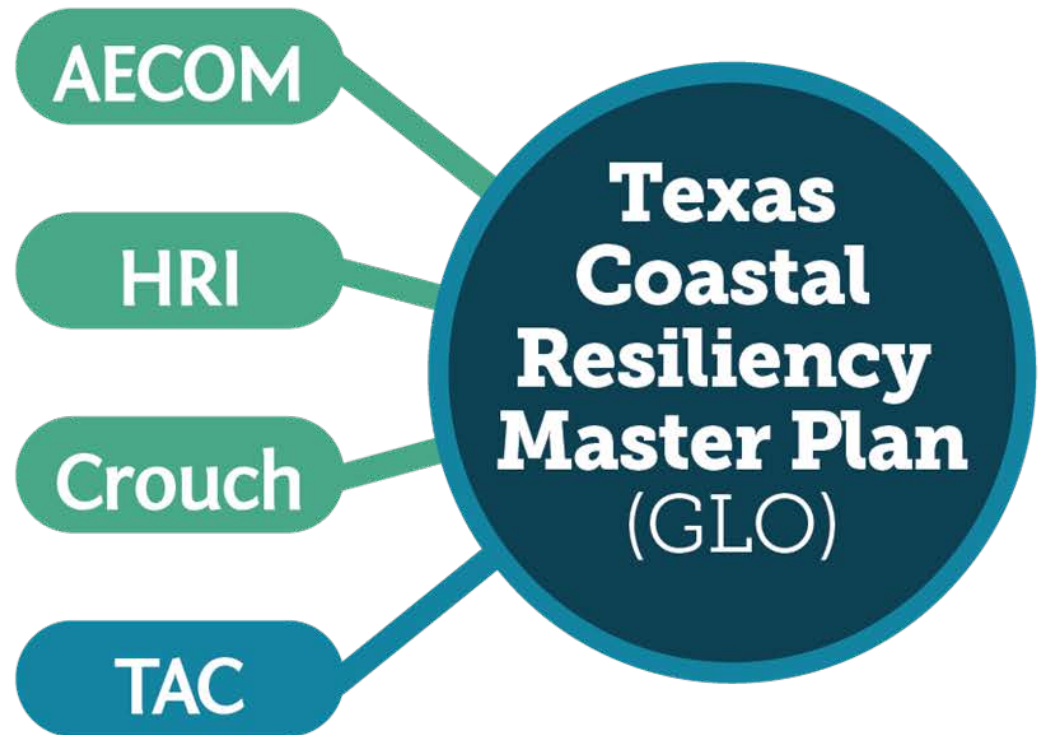


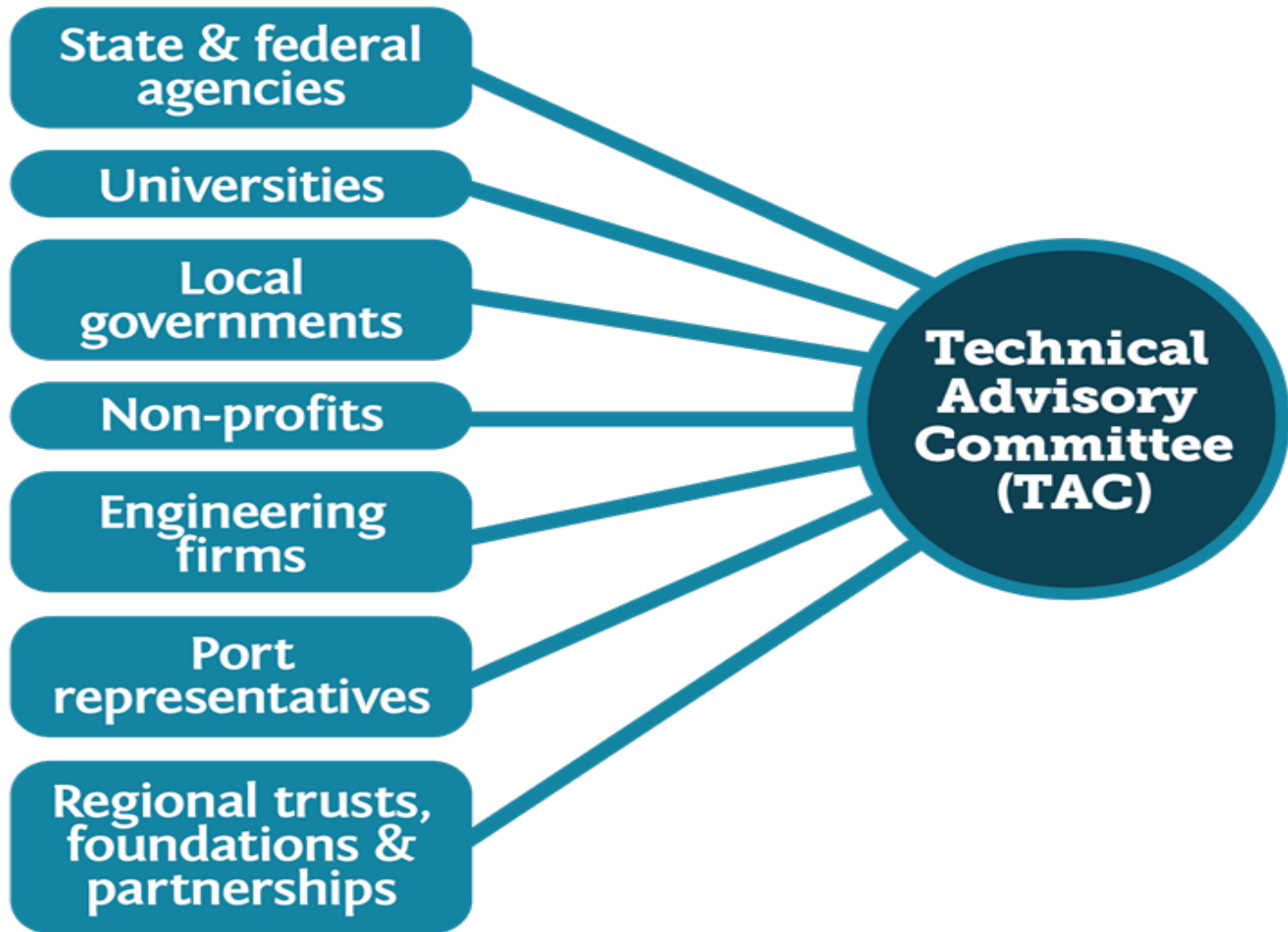


Overview of the 2017 and 2019 Texas Coastal Resiliency Master Plans

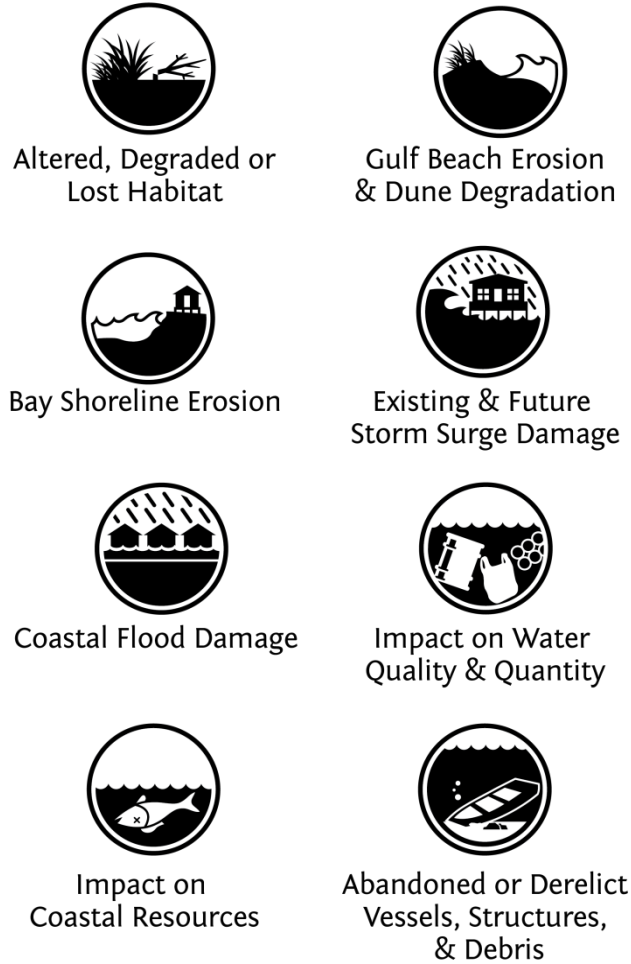
PLANNING TEAM

- GLO contracted with AECOM for engineering services, HRI for data analysis and Crouch Environmental for education and outreach.
- The Technical Advisory Committee (TAC) is made up of more than 200 coastal experts.

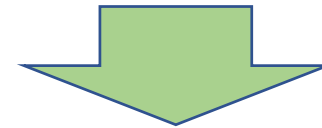




Coastal Issues of Concern and Resiliency Strategies



2017



2019



Ecological Resiliency



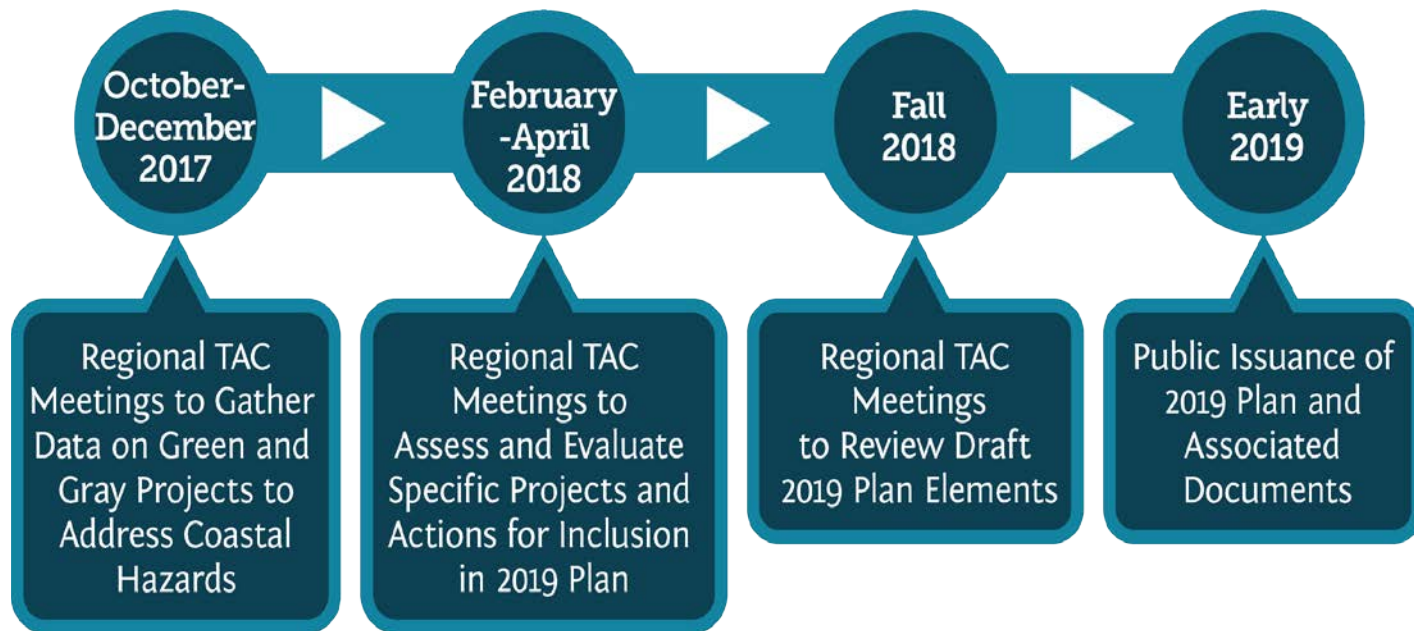
Societal Resiliency



Administrative Resiliency

MEETING SCHEDULE

2019 TEXAS COASTAL RESILIENCY MASTER PLAN



2019 Texas Coastal Resiliency Master Plan Enhancements



Enhance 2017 Plan Resiliency Strategies and Framework to incorporate storm surge suppression and infrastructure projects.



Identify multi-faceted actions that consider nature-based and traditional infrastructure to enhance community resiliency.



Conduct a gap analysis to identify actions that are needed where projects are not specifically proposed.

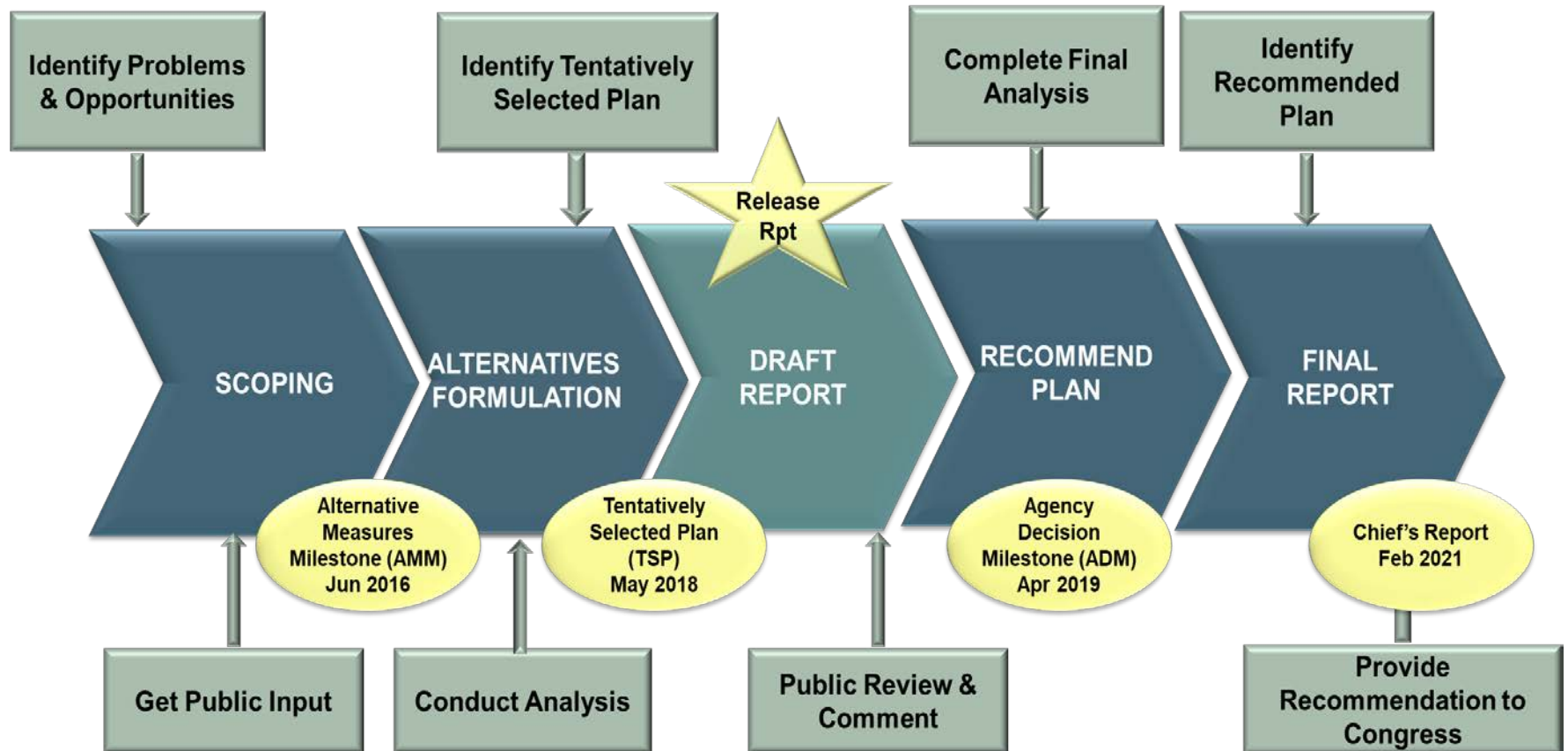


Introduce physical modeling to adapt to future changing conditions and to ensure the most resilient suite of projects is identified.



Incorporate best practices into the 2019 Plan, and define adaptive management processes for proposed actions and projects.

COASTAL TEXAS SCHEDULE





Coastal Texas Protection and Restoration Study TSP



G28
Bolivar Peninsula and West Bay GIWW Shoreline and Island Protection

G3
Bolivar Peninsula/Galveston Island Gulf and Beach Dune Restoration

B12
Bastrop Bay, Oyster Lake, West Bay and GIWW Shoreline Restoration

B2
Follets Island Gulf Beach and Dune Restoration

Alternative A

CSRM ER

M8
East Matagorda Bay Shoreline Protection

CM5
South Padre Island Beach Nourishment

W3
Port Mansfield Channel and Island Rookery Restoration

SP1
Redfish Bay Protection and Enhancement

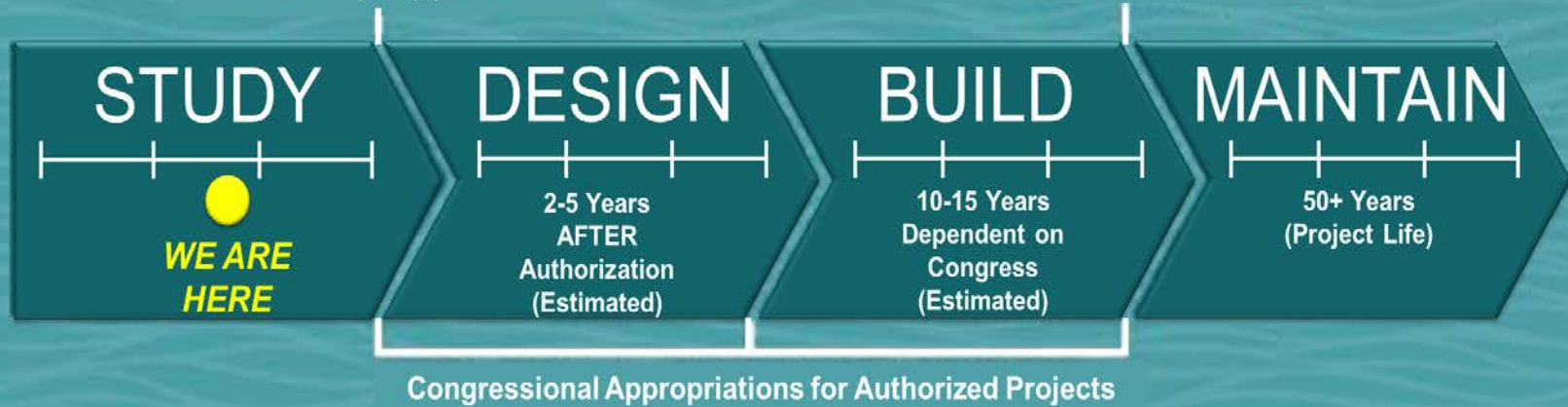
CA5
Keller Bay Restoration

CA6
Magnolia to Port O'Connor Shoreline Protection and Restoration

ESTIMATED PROJECT SCHEDULE

Study Complete - Request
Congressional Authorization
for Project(s) 2021

Local Sponsor(s)
Maintain Project



Congressional Appropriations for Authorized Projects



Texas
Coastal
Resiliency
Master Plan

Texas Coastal
Infrastructure
Study

Coastal Texas
Study



US Army Corps
of Engineers
Galveston District

Sabine Pass to
Galveston
Bay Study



US Army Corps
of Engineers
Galveston District

Storm Surge
Suppression
Study



GCCPRD

The Gulf Coast Community
Protection and Recovery District

“Millions of Texans live and work along the coast and the time has come to get serious about investing in its protection. By working together, we will directly address ongoing threats to the Texas coast and ensure a safer, more protected region for future generations.”

*George P. Bush,
Commissioner, Texas General Land Office*

