

Wallisville Lake Project Waterfowl Hunting Map

Hunting Requires Permit

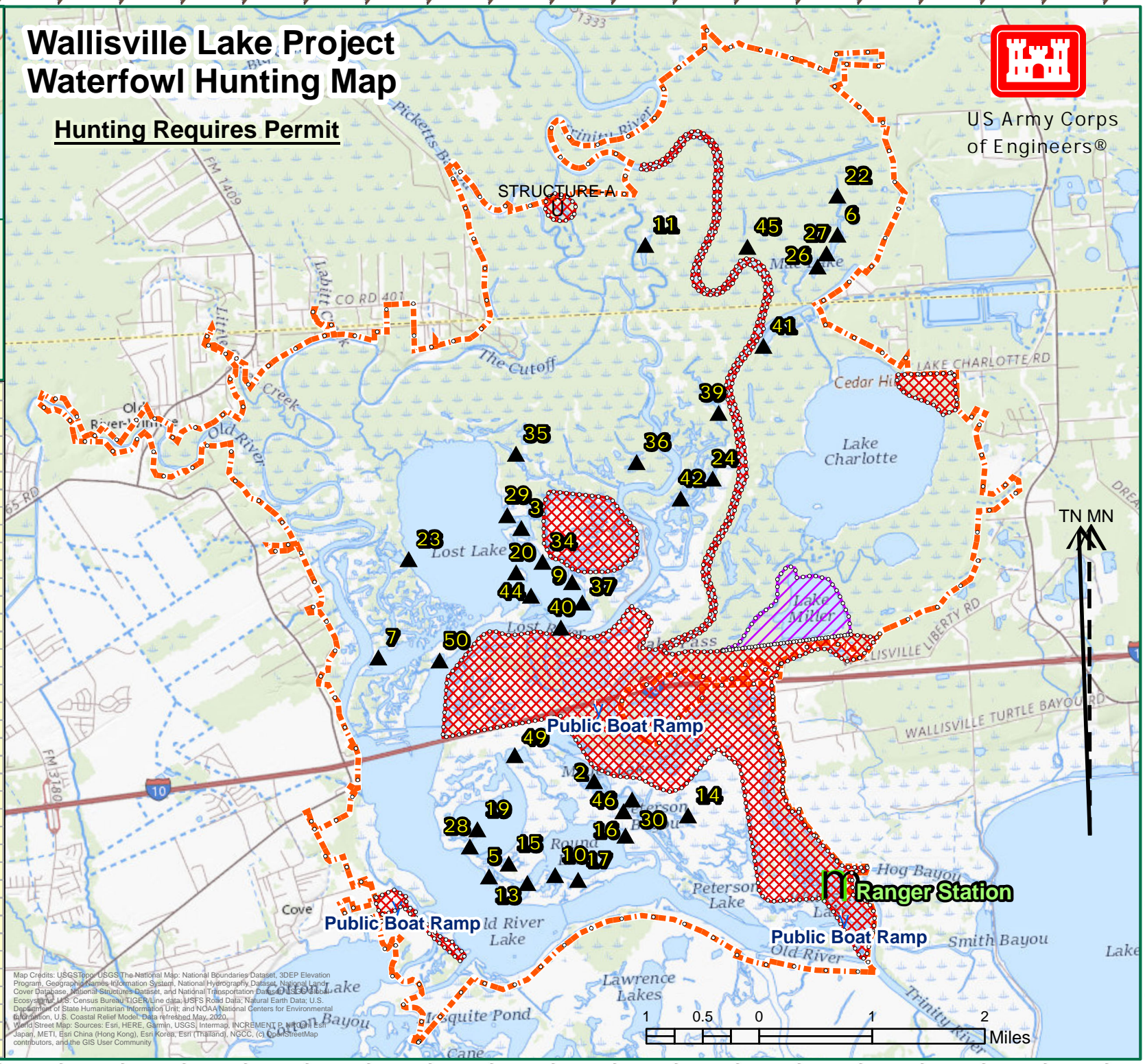


US Army Corps
of Engineers®

- ▲ Waterfowl Blinds
- ▨ No Hunting Areas
- ▨ No Blind Area
- ⋯ WLP Boundary

Waterfowl Blind Locations

BlindNo	Latitude	Longitude
2	29.826983	-94.766611
3	29.859867	-94.775992
5	29.815222	-94.782611
6	29.896111	-94.727778
7	29.843889	-94.797778
9	29.852675	-94.768789
10	29.815083	-94.772861
11	29.895694	-94.756194
13	29.814194	-94.777
14	29.822139	-94.752944
15	29.816778	-94.779639
16	29.819833	-94.762278
17	29.814361	-94.7695
19	29.821333	-94.784083
20	29.854194	-94.777
22	29.901139	-94.727583
23	29.856389	-94.792778
24	29.865333	-94.7475
26	29.892111	-94.730889
27	29.89375	-94.7295
28	29.819167	-94.785278
29	29.861583	-94.778
30	29.824444	-94.761111
34	29.855431	-94.773042
35	29.869444	-94.776389
36	29.867806	-94.758639
37	29.850006	-94.767392
39	29.87375	-94.746278
40	29.846889	-94.770694
41	29.882167	-94.739306
42	29.862917	-94.752333
44	29.851133	-94.774928
45	29.894972	-94.741139
46	29.822972	-94.762444
49	29.830694	-94.778167
50	29.843222	-94.78875



Map Credits: USGS Topo, USGS The National Map, National Boundaries Dataset, 3DEP Elevation Program, Geographic Names Information System, National Hydrography Dataset, National Land Cover Database, National Structures Dataset, and National Transportation Database, National Ecosystems, U.S. Census Bureau TIGER/Line data, USFS Road Data, Natural Earth Data, U.S. Department of State Humanitarian Information Unit, and NOAA National Centers for Environmental Information, U.S. Coastal Relief Model. Data refreshed May, 2020.
 World Street Map Sources: Esri, HERE, Garmin, USGS, Intermap, INCREMENT P, NRCan, Canada, Japan, METI, Esri China (Hong Kong), Esri Korea, Esri (Thailand), NGCC, (c) OpenStreetMap contributors, and the GIS User Community

