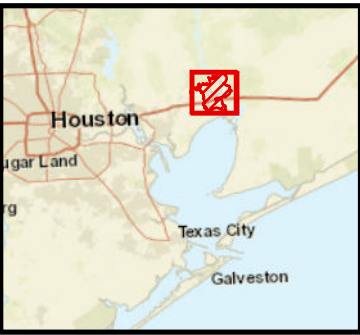


Wallisville Lake Project Waterfowl Hunting Map

Hunting Requires Permit

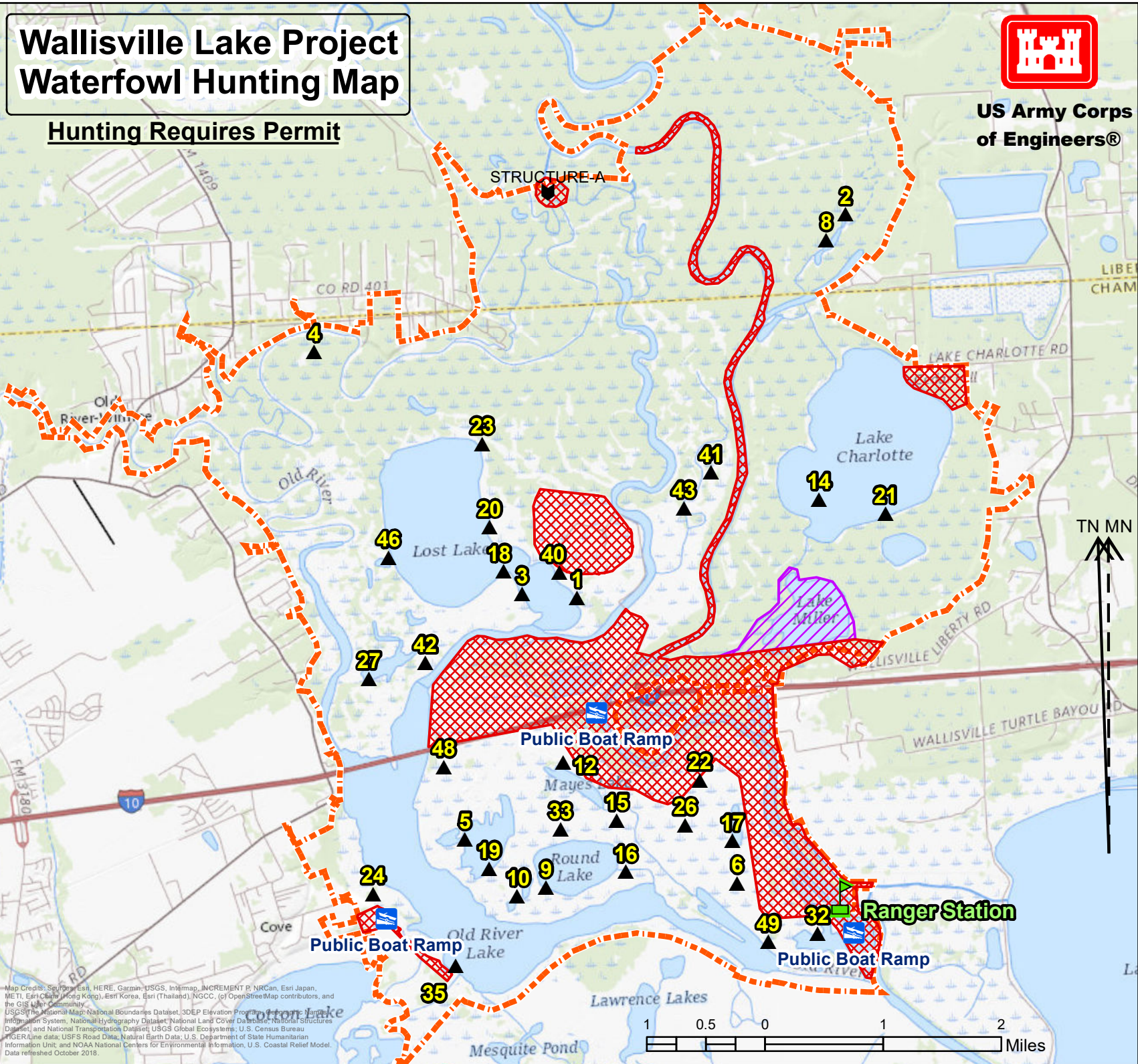


US Army Corps
of Engineers®



- ▲ Blinds 2019-20
- No Hunting Areas
- No Blind Area
- WLP Boundary

Blind Locations		
No.	Latitude	Longitude
1	29.85057	-94.76704
2	29.89646	-94.72724
3	29.85129	-94.77471
4	29.88198	-94.80282
5	29.82132	-94.78409
6	29.81476	-94.74591
8	29.89341	-94.73006
9	29.81508	-94.77287
10	29.81416	-94.77701
12	29.83038	-94.76978
14	29.86153	-94.73242
15	29.82300	-94.76252
16	29.81665	-94.76157
17	29.81994	-94.74637
18	29.85411	-94.77720
19	29.81765	-94.78076
20	29.85964	-94.77901
21	29.85955	-94.72309
22	29.82759	-94.75062
23	29.86988	-94.77956
24	29.81504	-94.79728
26	29.82212	-94.75292
27	29.84151	-94.79676
32	29.80822	-94.73483
33	29.82216	-94.77052
35	29.80586	-94.78595
40	29.85374	-94.76936
41	29.86534	-94.74751
42	29.84322	-94.78875
43	29.86109	-94.75146
46	29.85635	-94.79338
48	29.83037	-94.78666
49	29.80742	-94.74181



Map Credits: Source: Esri, HERE, Garmin, USGS, Intermap, INCREMENT P, NRCan, Esri Japan, METI, Esri China (Hong Kong), Esri Korea, Esri (Thailand), NGCC, (c) OpenStreetMap contributors, and the GIS User Community.
 USGS The National Map: National Boundaries Dataset, 3DEP Elevation Program, Hydrographic Names Dataset, National Hydrography Dataset, National Land Cover Database, National Structures Dataset, and National Transportation Dataset; USGS Global Ecosystems, U.S. Census Bureau (CIGER) Line data; USFS Road Data; Natural Earth Data; U.S. Department of State Humanitarian Information Unit; and NOAA National Centers for Environmental Information, U.S. Coastal Relief Model. Data refreshed October 2018.

