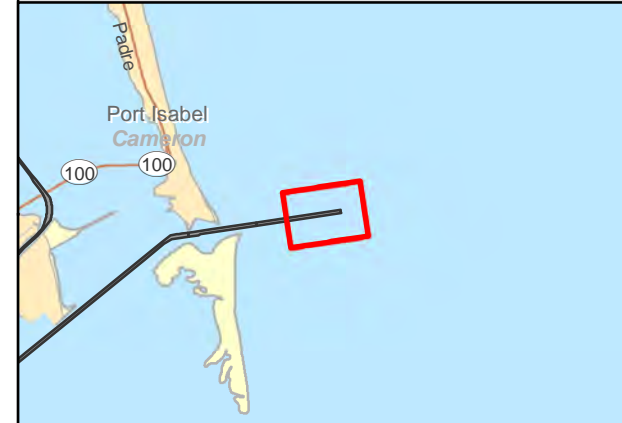


001 Entrance Channel



Legend

- Shoalest Sounding
  - Contour Lines
  - Channel Centerline
  - Channel Toe
  - ▲ Green Side Aid
  - ▲ Red Side Aid
  - ◆ Red Side Aid
  - ◆ Green Side Aid
  - ◆ Green Side Aid
- Depths in Feet**
- 7 - 20
  - 20 - 25
  - 25 - 32
  - 32 - 35
  - 35 - 38
  - 38 - 42
  - 42 - 44
  - 44 - 45
  - 45 - 47



Projection: NAD 1983 StatePlane Texas South FIPS 4205 Feet, Units: Foot US  
Map Scale= 1:6,000

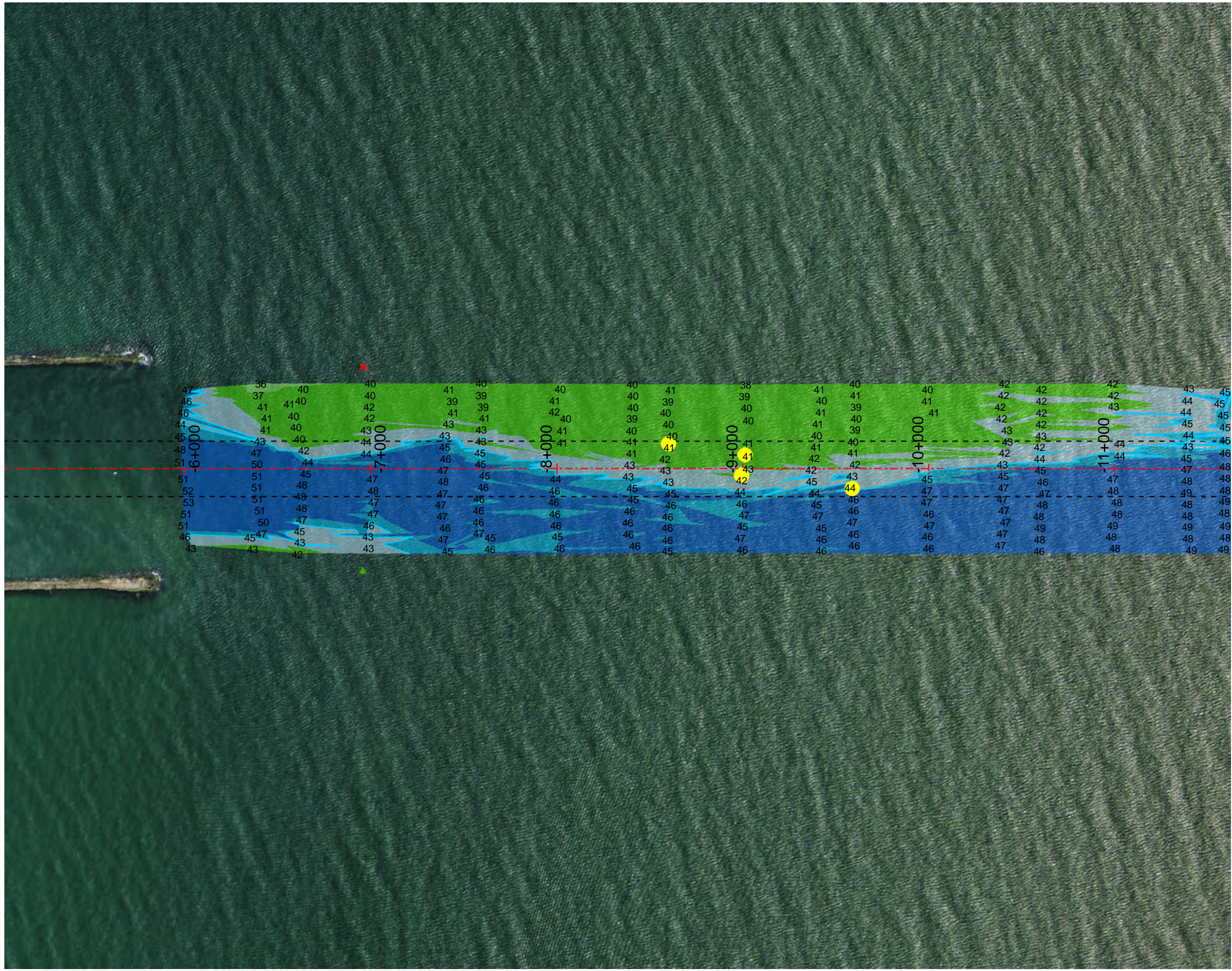
Survey Date: 20 March 2014

Print Date: 4/24/2014



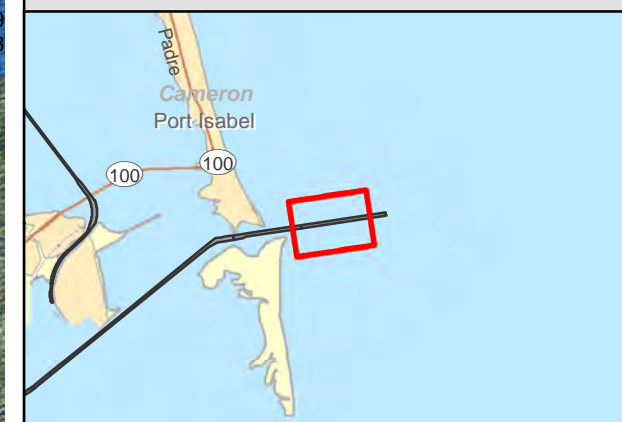
This product is reproduced from geospatial information prepared by the U.S. Army Corps of Engineers. GIS data and product accuracy may vary. Data may be developed from sources of differing accuracy, accurate only at certain scales, based on modeling or interpretation, incomplete while being created or revised, etc. Using GIS products for purposes other than those for which they were created may yield inaccurate or misleading results. The Corps of Engineers reserves the right to correct, update, modify, or replace GIS products without notification.

001 Entrance Channel



**Legend**

- Shoalest Sounding
  - Contour Lines
  - Channel Centerline
  - Channel Toe
  - ▲ Green Side Aid
  - ▲ Red Side Aid
  - ◆ Red Side Aid
  - ◆ Green Side Aid
  - ◆ Green Side Aid
- | Depths in Feet |         |
|----------------|---------|
|                | 7 - 20  |
|                | 20 - 25 |
|                | 25 - 32 |
|                | 32 - 35 |
|                | 35 - 38 |
|                | 38 - 42 |
|                | 42 - 44 |
|                | 44 - 45 |
|                | 45 - 47 |



Projection: NAD 1983 StatePlane Texas South FIPS 4205 Feet, Units: Foot US  
Map Scale= 1:6,000

Survey Date: 20 March 2014



Print Date: 4/24/2014

This product is reproduced from geospatial information prepared by the U.S. Army Corps of Engineers. GIS data and product accuracy may vary. Data may be developed from sources of differing accuracy, accurate only at certain scales, based on modeling or interpretation, incomplete while being created or revised, etc. Using GIS products for purposes other than those for which they were created may yield inaccurate or misleading results. The Corps of Engineers reserves the right to correct, update, modify, or replace GIS products without notification.