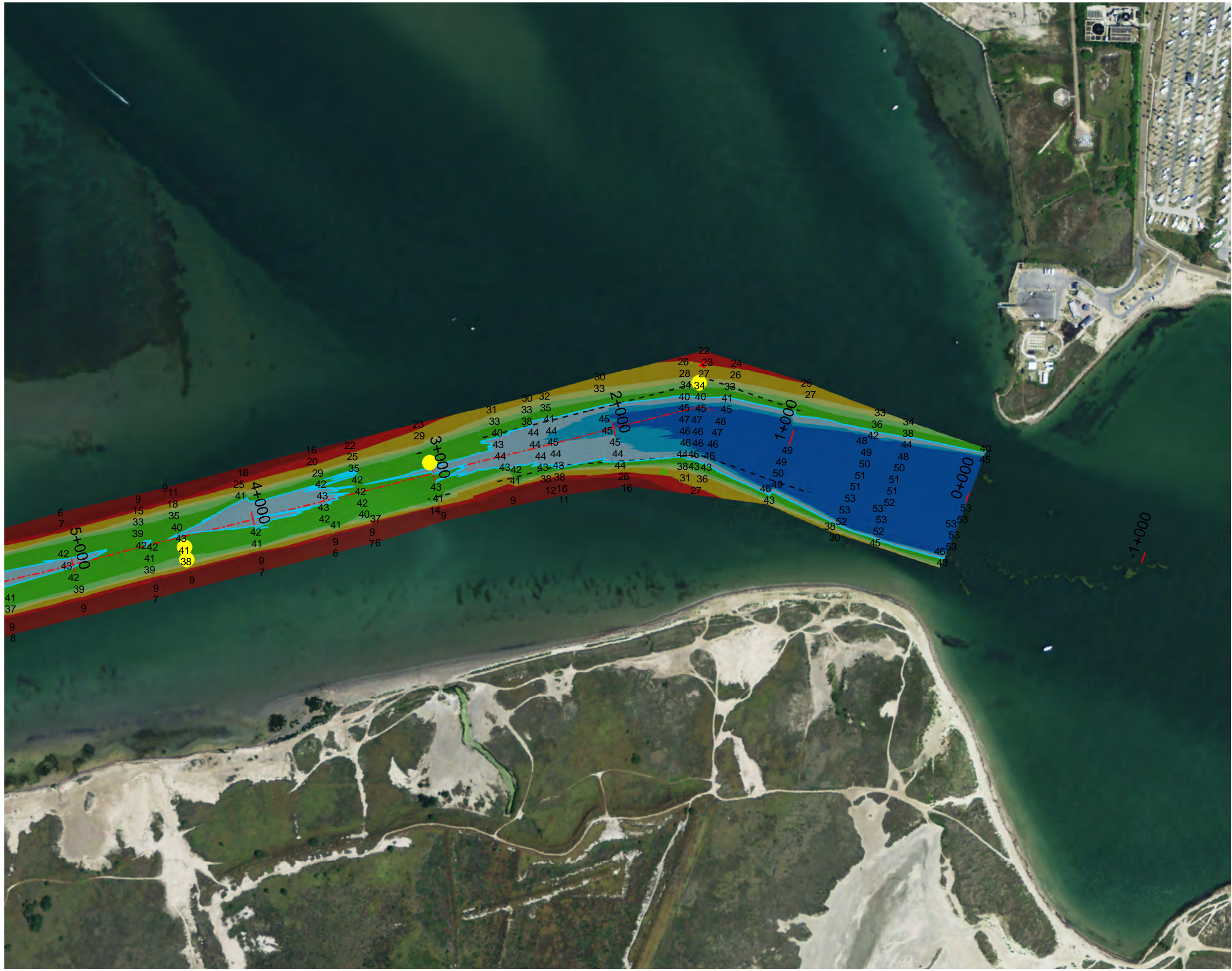


003 Channel Across Laguna Madre

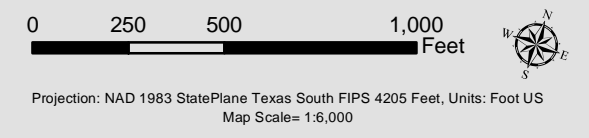
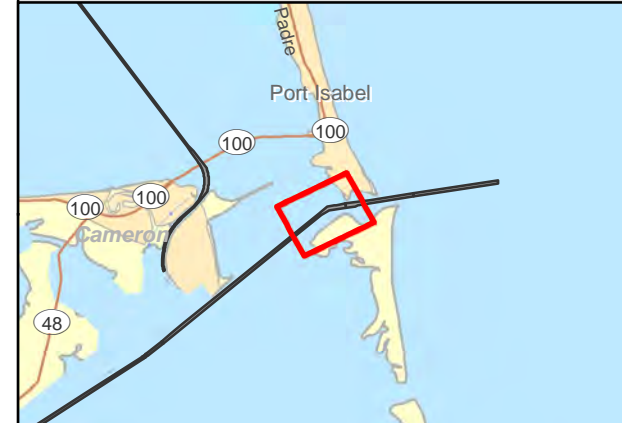


Legend

- Shoalest Sounding
- Contour Lines
- - - Channel Centerline
- - - Channel Toe
- ▲ Green Side Aid
- ▲ Red Side Aid
- ◆ Red Side Aid
- ◆ Green Side Aid
- ◆ Green Side Aid

Depths in Feet

	7 - 20
	20 - 25
	25 - 32
	32 - 35
	35 - 38
	38 - 42
	42 - 44
	44 - 45
	45 - 47



Survey Date: 10 March 2014

Print Date: 4/24/2014



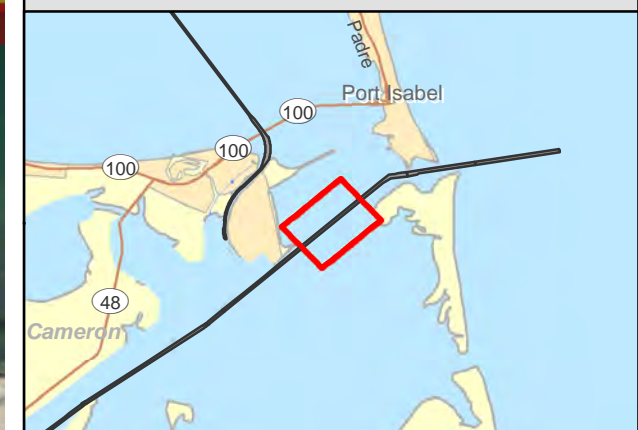
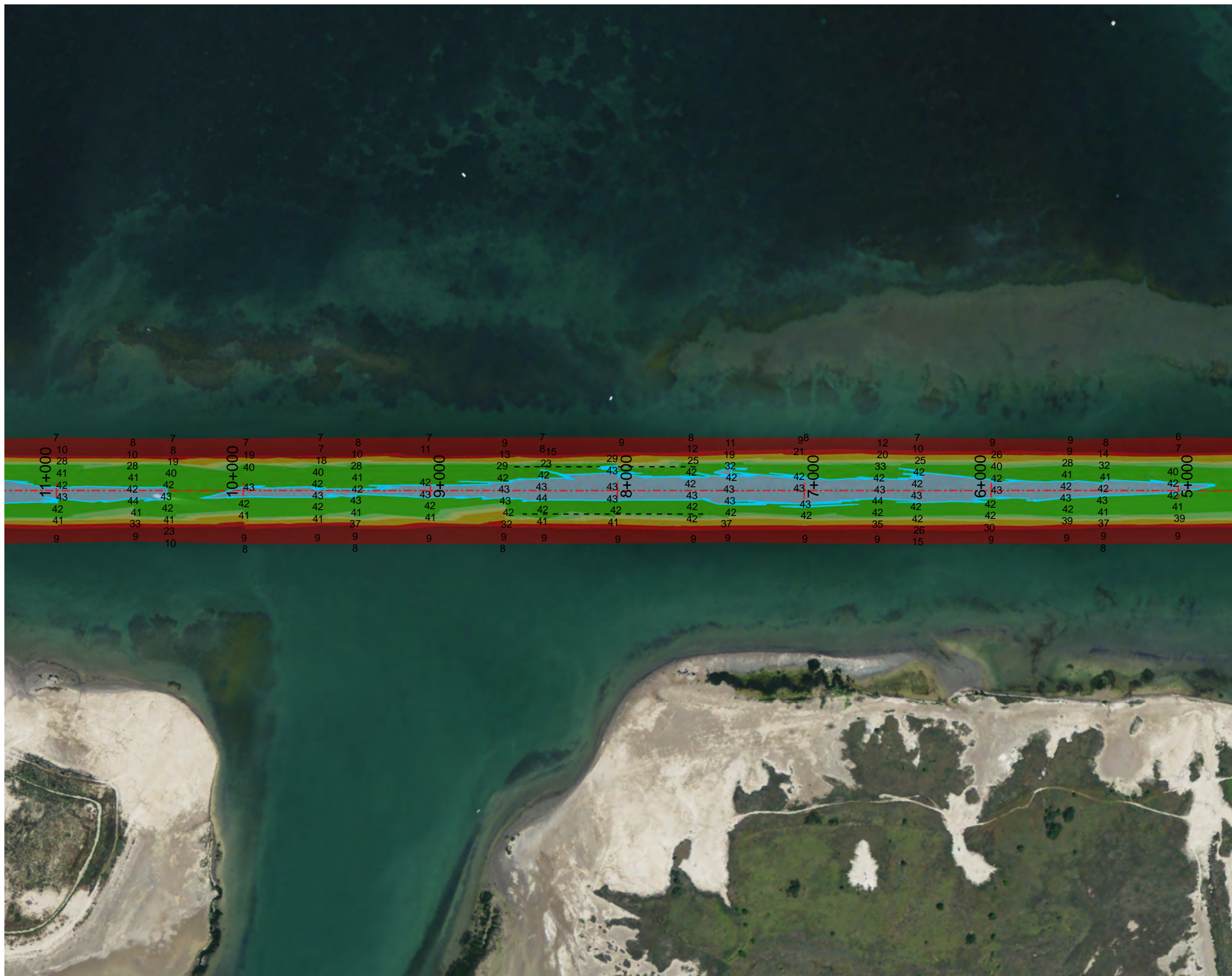
This product is reproduced from geospatial information prepared by the U.S. Army Corps of Engineers. GIS data and product accuracy may vary. Data may be developed from sources of differing accuracy, accurate only at certain scales, based on modeling or interpretation, incomplete while being created or revised, etc. Using GIS products for purposes other than those for which they were created may yield inaccurate or misleading results. The Corps of Engineers reserves the right to correct, update, modify, or replace GIS products without notification.

003 Channel Across Laguna Madre



Legend

- | | | |
|--|--------------------|-----------------------|
| | Shoalest Sounding | Depths in Feet |
| | Contour Lines | 7 - 20 |
| | Channel Centerline | 20 - 25 |
| | Channel Toe | 25 - 32 |
| | Green Side Aid | 32 - 35 |
| | Red Side Aid | 35 - 38 |
| | Red Side Aid | 38 - 42 |
| | Green Side Aid | 42 - 44 |
| | Green Side Aid | 44 - 45 |
| | Green Side Aid | 45 - 47 |



Projection: NAD 1983 StatePlane Texas South FIPS 4205 Feet, Units: Foot US
Map Scale= 1:6,000

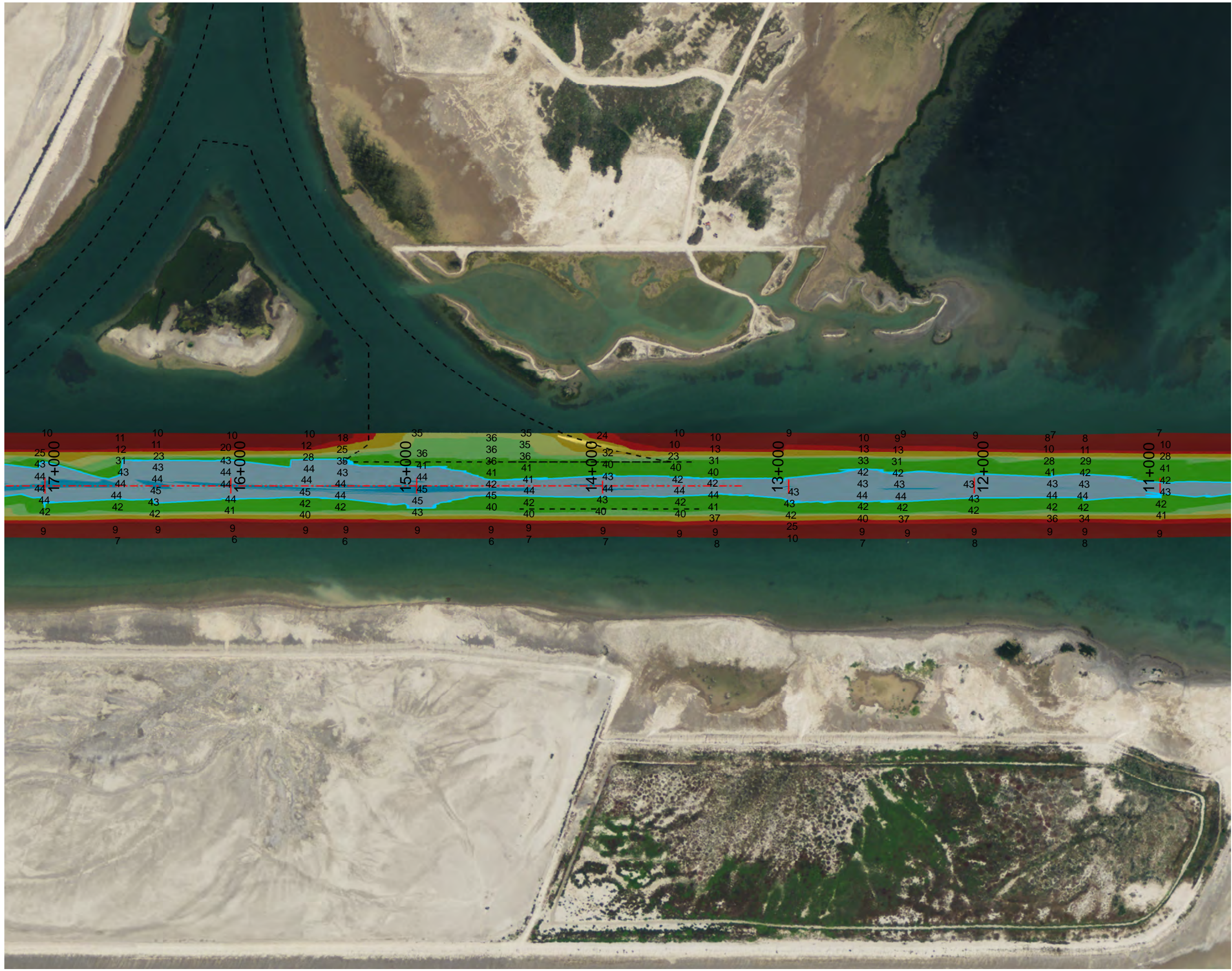
Survey Date: 10 March 2014



Print Date: 4/24/2014

This product is reproduced from geospatial information prepared by the U.S. Army Corps of Engineers. GIS data and product accuracy may vary. Data may be developed from sources of differing accuracy, accurate only at certain scales, based on modeling or interpretation, incomplete while being created or revised, etc. Using GIS products for purposes other than those for which they were created may yield inaccurate or misleading results. The Corps of Engineers reserves the right to correct, update, modify, or replace GIS products without notification.

003 Channel Across Laguna Madre



Legend

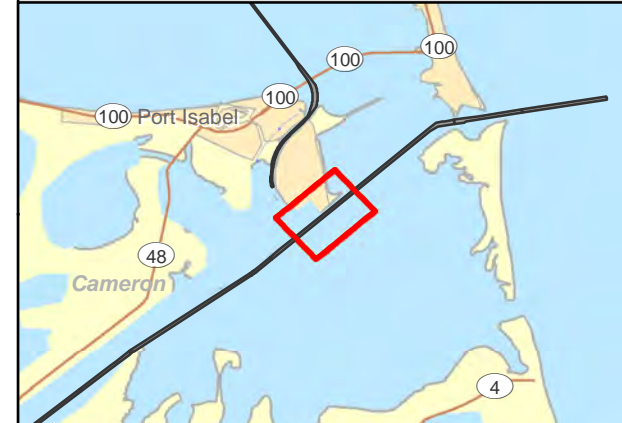
- Shoalest Sounding
- Contour Lines
- Channel Centerline
- Channel Toe

Depths in Feet

	7 - 20
	20 - 25
	25 - 32
	32 - 35
	35 - 38
	38 - 42
	42 - 44
	44 - 45
	45 - 47

Navigation Aids

- ▲ Green Side Aid
- ▲ Red Side Aid
- ◆ Red Side Aid
- ◆ Green Side Aid
- ◆ Green Side Aid



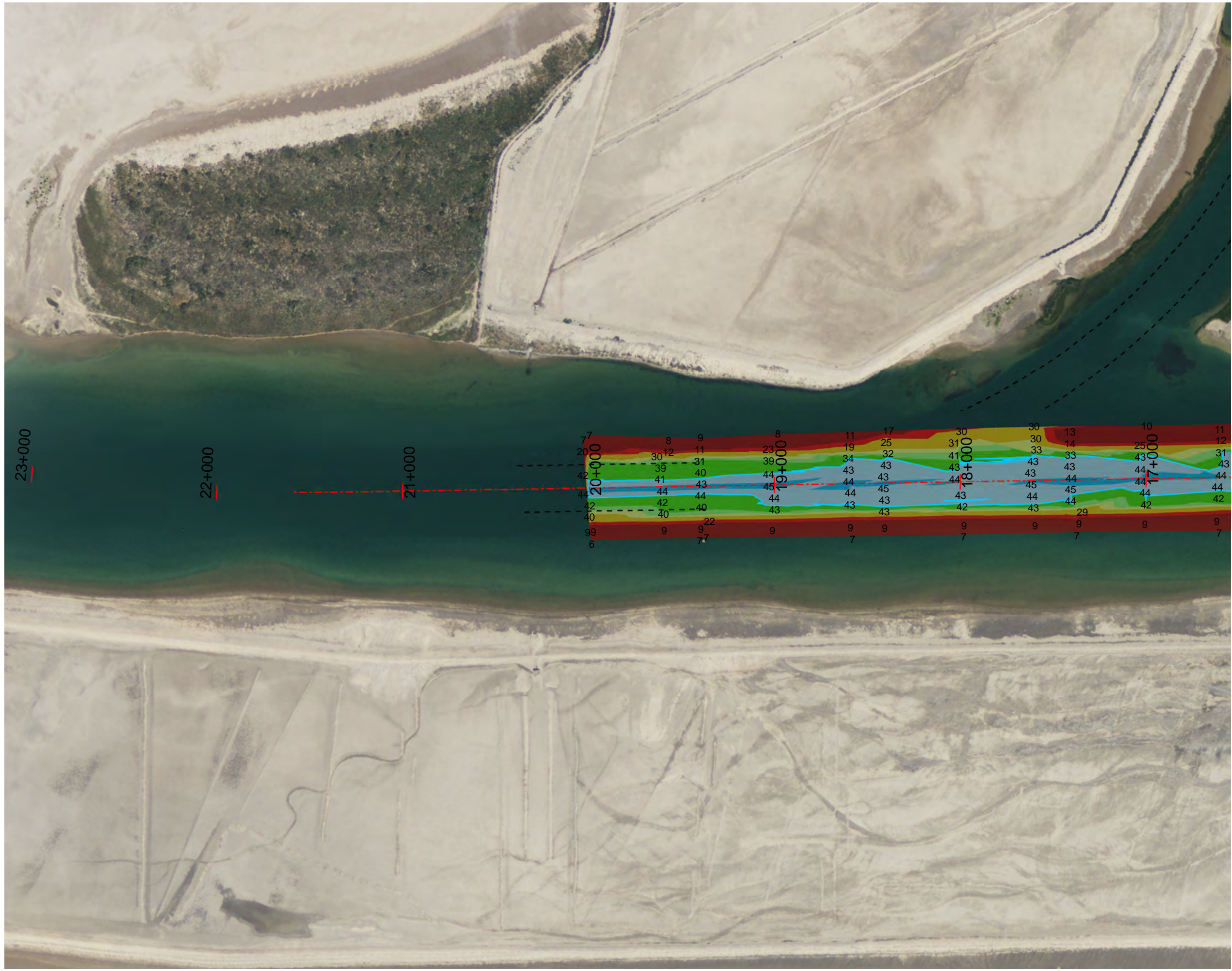
0 250 500 1,000 Feet

Projection: NAD 1983 StatePlane Texas South FIPS 4205 Feet, Units: Foot US
Map Scale= 1:6,000

Survey Date: 10 March 2014

Print Date: 4/24/2014

This product is reproduced from geospatial information prepared by the U.S. Army Corps of Engineers. GIS data and product accuracy may vary. Data may be developed from sources of differing accuracy, accurate only at certain scales, based on modeling or interpretation, incomplete while being created or revised, etc. Using GIS products for purposes other than those for which they were created may yield inaccurate or misleading results. The Corps of Engineers reserves the right to correct, update, modify, or replace GIS products without notification.

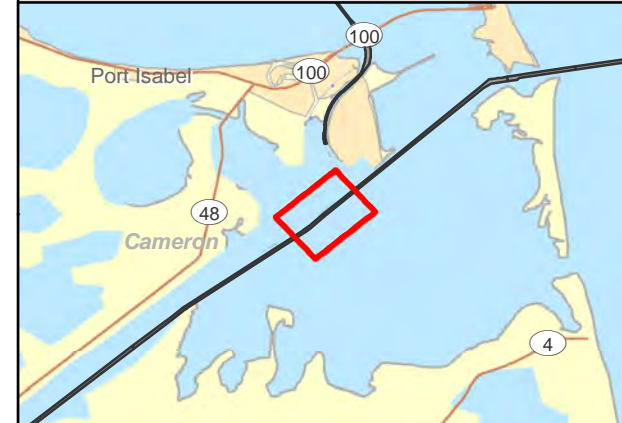


003 Channel Across Laguna Madre



Legend

- Shoalest Sounding
 - Contour Lines
 - Channel Centerline
 - Channel Toe
- Depths in Feet**
- 7 - 20
 - 20 - 25
 - 25 - 32
 - 32 - 35
 - 35 - 38
 - 38 - 42
 - 42 - 44
 - 44 - 45
 - 45 - 47
- Navigation Aids**
- ▲ Green Side Aid
 - ▲ Red Side Aid
 - ◆ Red Side Aid
 - ◆ Green Side Aid
 - ◆ Green Side Aid



Projection: NAD 1983 StatePlane Texas South FIPS 4205 Feet, Units: Foot US
Map Scale= 1:6,000

Survey Date: 10 March 2014



Print Date: 4/24/2014

This product is reproduced from geospatial information prepared by the U.S. Army Corps of Engineers. GIS data and product accuracy may vary. Data may be developed from sources of differing accuracy, accurate only at certain scales, based on modeling or interpretation, incomplete while being created or revised, etc. Using GIS products for purposes other than those for which they were created may yield inaccurate or misleading results. The Corps of Engineers reserves the right to correct, update, modify, or replace GIS products without notification.