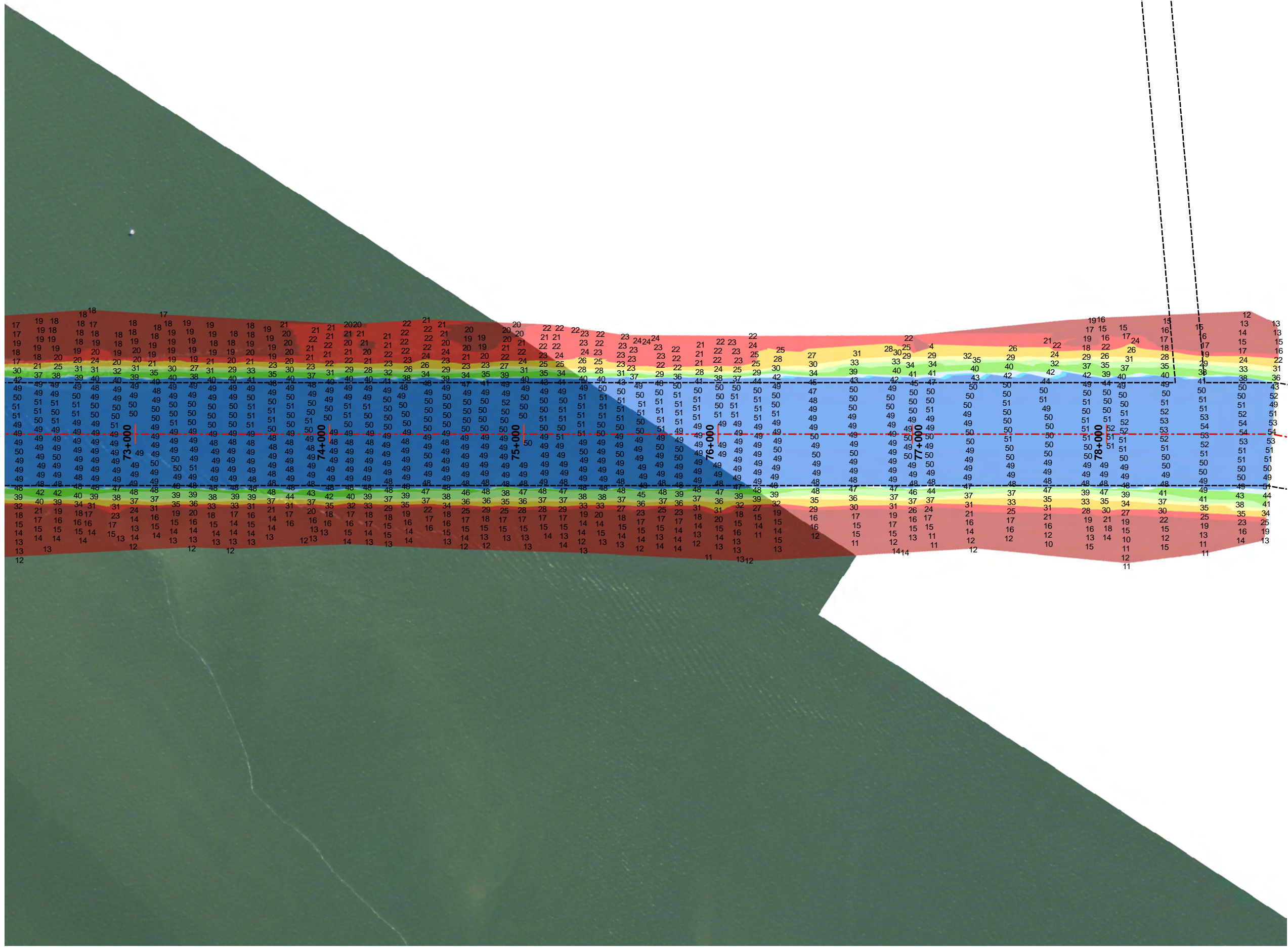


002 Redfish Reef to Beacon 76



Legend

- Shoalest Sounding
- Channel Centerline
- Channel Toe

Bathymetry Raster

Depth in Feet

	7 - 20
	20 - 25
	25 - 32
	32 - 35
	35 - 38
	38 - 42
	42 - 44
	44 - 45
	45 - 47

Aids To Navigation

- ▲ Red Side Aid
- ◆ Red Side Aid
- ▲ Green Side Aid
- ◆ Green Side Aid



0 250 500 1,000 Feet

Projection: NAD 1983 StatePlane Texas South Central FIPS 4204 Feet, Units: Foot US
Map Scale= 1:6,000

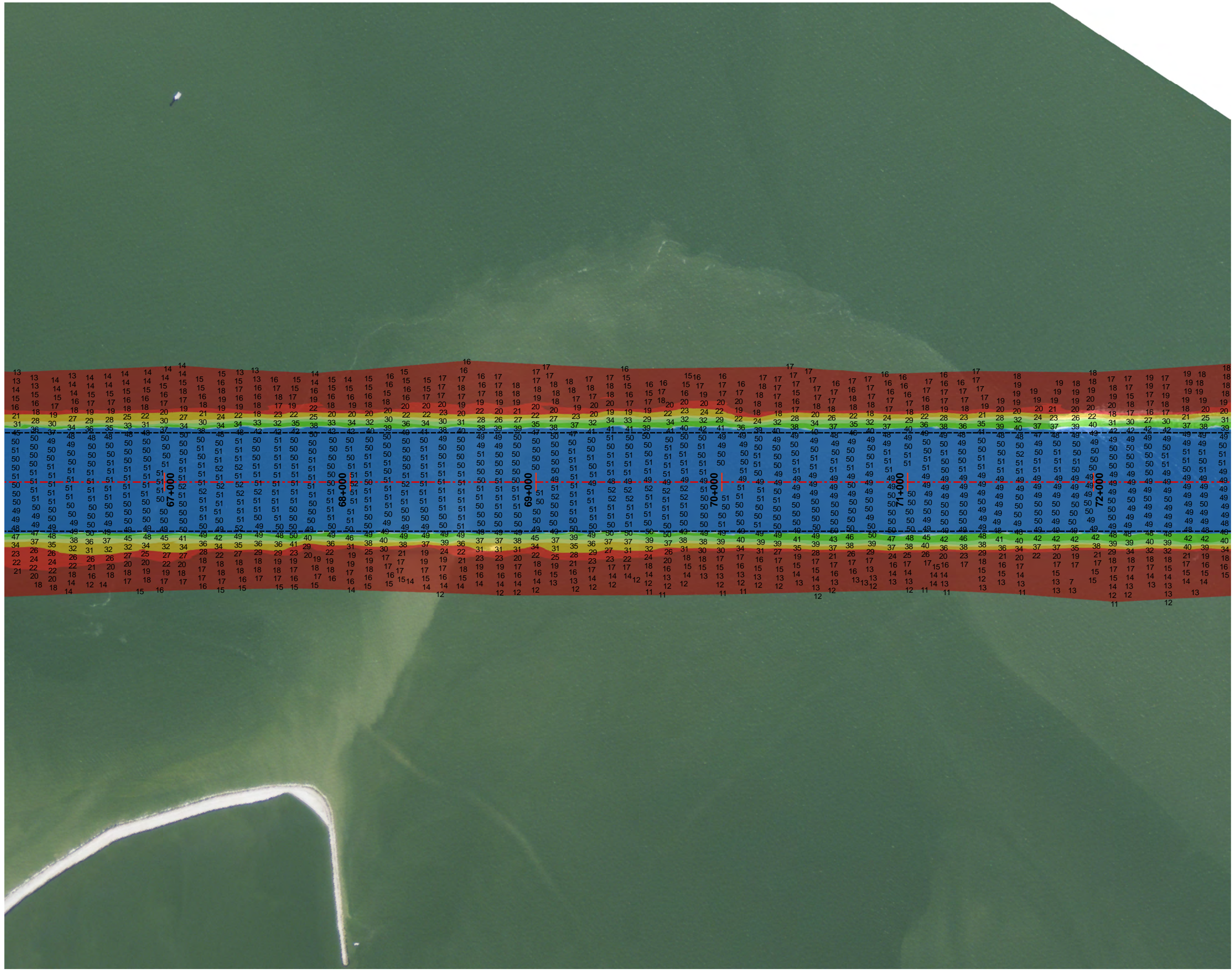
Survey Date: 10 March 2014

Print Date: 5/13/2014



This product is reproduced from geospatial information prepared by the U.S. Army Corps of Engineers. GIS data and product accuracy may vary. Data may be developed from sources of differing accuracy, accurate only at certain scales, based on modeling or interpretation, incomplete while being created or revised, etc. Using GIS products for purposes other than those for which they were created may yield inaccurate or misleading results. The Corps of Engineers reserves the right to correct, update, modify, or replace GIS products without notification.

002 Redfish Reef to Beacon 76



Legend

- Shoalest Sounding **Bathymetry Raster**
- - - Channel Centerline **Depth in Feet**
- - - Channel Toe

Aids To Navigation	
▲ Red Side Aid	 7 - 20
◆ Red Side Aid	 20 - 25
▲ Green Side Aid	 25 - 32
◆ Green Side Aid	 32 - 35
▲ Green Side Aid	 35 - 38
◆ Green Side Aid	 38 - 42
	 42 - 44
	 44 - 45
	 45 - 47



0 250 500 1,000 Feet

Projection: NAD 1983 StatePlane Texas South Central FIPS 4204 Feet, Units: Foot US
Map Scale= 1:6,000

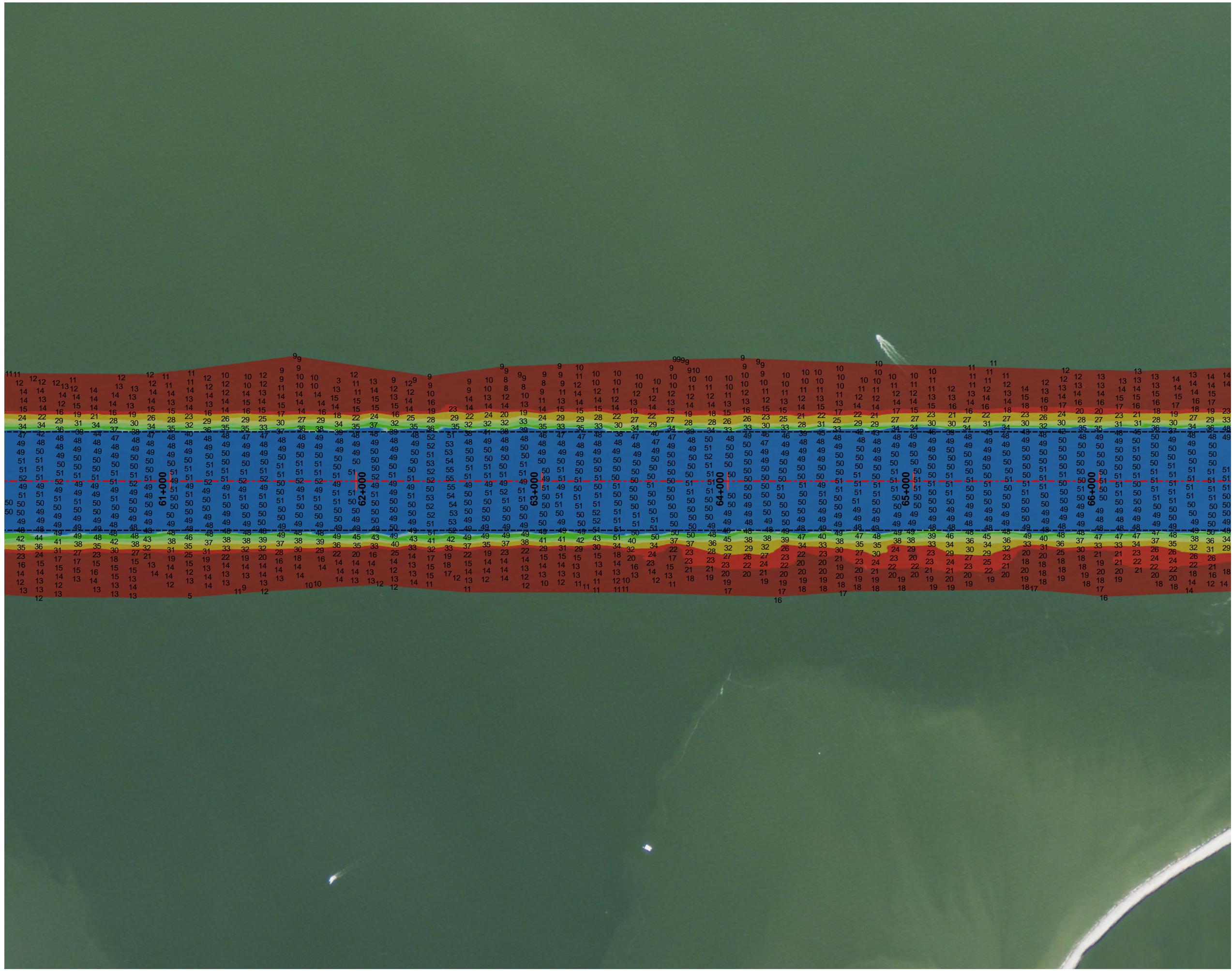
Survey Date: 10 March 2014

Print Date: 5/13/2014



This product is reproduced from geospatial information prepared by the U.S. Army Corps of Engineers. GIS data and product accuracy may vary. Data may be developed from sources of differing accuracy, accurate only at certain scales, based on modeling or interpretation, incomplete while being created or revised, etc. Using GIS products for purposes other than those for which they were created may yield inaccurate or misleading results. The Corps of Engineers reserves the right to correct, update, modify, or replace GIS products without notification.

002 Redfish Reef to Beacon 76



Legend

- Shoalest Sounding
- - - Channel Centerline
- - - Channel Toe

Bathymetry Raster

Depth in Feet

7 - 20
20 - 25
25 - 32
32 - 35
35 - 38
38 - 42
42 - 44
44 - 45
45 - 47

Aids To Navigation

- ▲ Red Side Aid
- ◆ Red Side Aid
- ▲ Green Side Aid
- ◆ Green Side Aid



0 250 500 1,000 Feet

Projection: NAD 1983 StatePlane Texas South Central FIPS 4204 Feet, Units: Foot US
Map Scale= 1:6,000

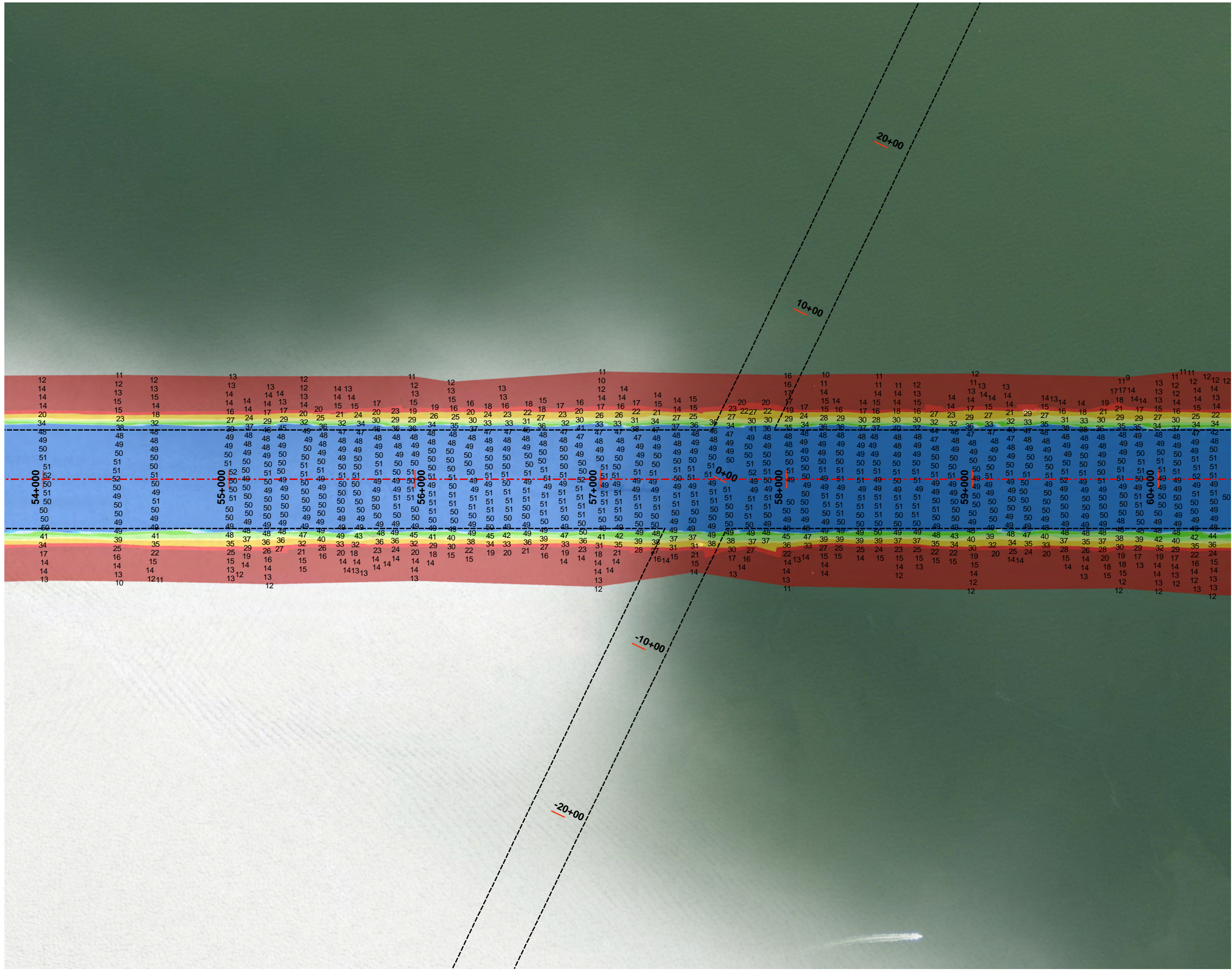
Survey Date: 10 March 2014

Print Date: 5/13/2014



This product is reproduced from geospatial information prepared by the U.S. Army Corps of Engineers. GIS data and product accuracy may vary. Data may be developed from sources of differing accuracy, accurate only at certain scales, based on modeling or interpretation, incomplete while being created or revised, etc. Using GIS products for purposes other than those for which they were created may yield inaccurate or misleading results. The Corps of Engineers reserves the right to correct, update, modify, or replace GIS products without notification.

002 Redfish Reef to Beacon 76



Legend

- Shoalest Sounding
- Channel Centerline
- Channel Toe

Bathymetry Raster

Depth in Feet

	7 - 20
	20 - 25
	25 - 32
	32 - 35
	35 - 38
	38 - 42
	42 - 44
	44 - 45
	45 - 47

Aids To Navigation

- ▲ Red Side Aid
- ◆ Red Side Aid
- ▲ Green Side Aid
- ◆ Green Side Aid



0 250 500 1,000 Feet

Projection: NAD 1983 StatePlane Texas South Central FIPS 4204 Feet, Units: Foot US
Map Scale= 1:6,000

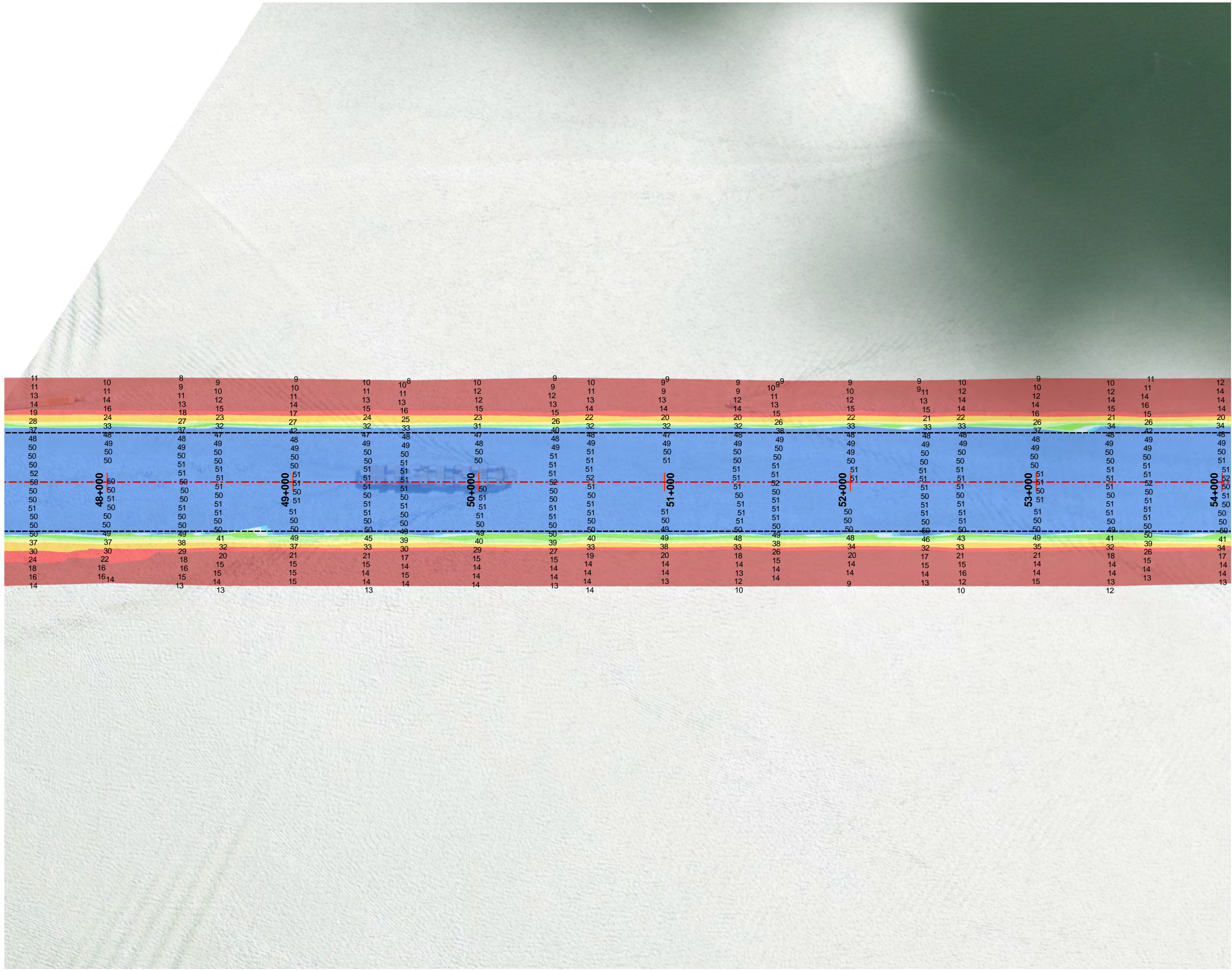
Survey Date: 10 March 2014

Print Date: 5/13/2014



This product is reproduced from geospatial information prepared by the U.S. Army Corps of Engineers. GIS data and product accuracy may vary. Data may be developed from sources of differing accuracy, accurate only at certain scales, based on modeling or interpretation, incomplete while being created or revised, etc. Using GIS products for purposes other than those for which they were created may yield inaccurate or misleading results. The Corps of Engineers reserves the right to correct, update, modify, or replace GIS products without notification.

002 Redfish Reef to Beacon 76



Legend

- Shoalest Sounding
- Channel Centerline
- Channel Toe

Bathymetry Raster

Depth in Feet

	7 - 20
	20 - 25
	25 - 32
	32 - 35
	35 - 38
	38 - 42
	42 - 44
	44 - 45
	45 - 47

Aids To Navigation

- ▲ Red Side Aid
- ◆ Red Side Aid
- ▲ Green Side Aid
- ◆ Green Side Aid



Projection: NAD 1983 StatePlane Texas South Central FIPS 4204 Feet, Units: Foot US
Map Scale= 1:6,000

Survey Date: 10 March 2014

Print Date: 5/13/2014



This product is reproduced from geospatial information prepared by the U.S. Army Corps of Engineers. GIS data and product accuracy may vary. Data may be developed from sources of differing accuracy, accurate only at certain scales, based on modeling or interpretation, incomplete while being created or revised, etc. Using GIS products for purposes other than those for which they were created may yield inaccurate or misleading results. The Corps of Engineers reserves the right to correct, update, modify, or replace GIS products without notification.

002 Redfish Reef to Beacon 76



Legend

- Shoalest Sounding
- Channel Centerline
- Channel Toe

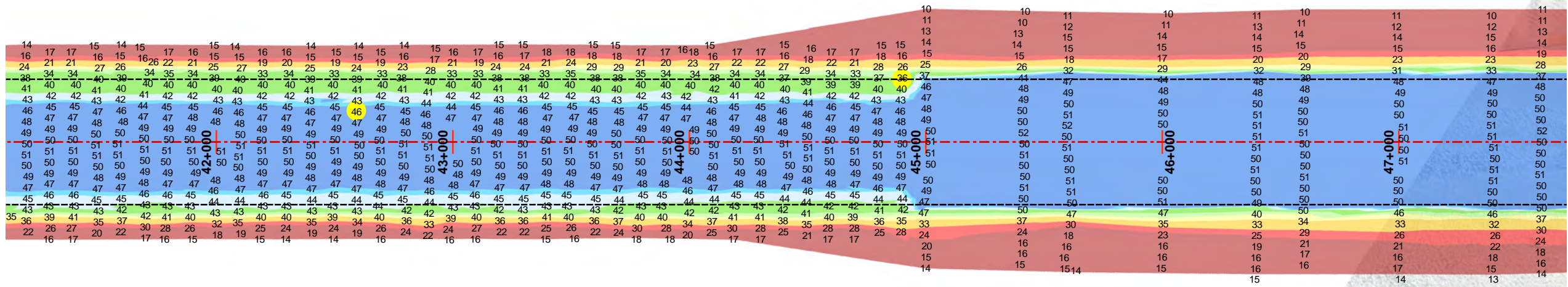
Bathymetry Raster

Depth in Feet

	7 - 20
	20 - 25
	25 - 32
	32 - 35
	35 - 38
	38 - 42
	42 - 44
	44 - 45
	45 - 47

Aids To Navigation

- ▲ Red Side Aid
- ◆ Red Side Aid
- ▲ Green Side Aid
- ◆ Green Side Aid



0 250 500 1,000 Feet

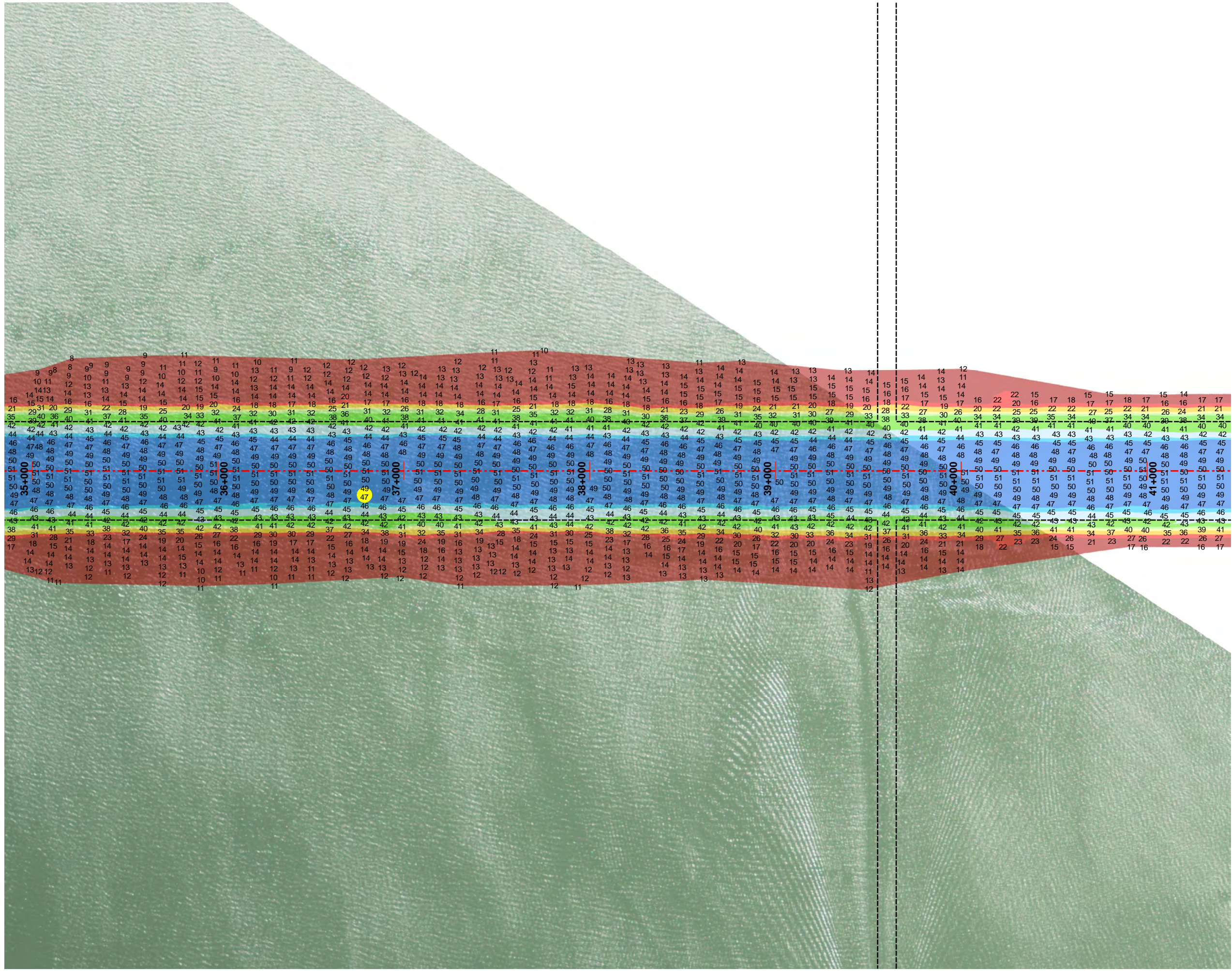
Projection: NAD 1983 StatePlane Texas South Central FIPS 4204 Feet, Units: Foot US
Map Scale= 1:6,000

Survey Date: 10 March 2014

Print Date: 5/13/2014

This product is reproduced from geospatial information prepared by the U.S. Army Corps of Engineers. GIS data and product accuracy may vary. Data may be developed from sources of differing accuracy, accurate only at certain scales, based on modeling or interpretation, incomplete while being created or revised, etc. Using GIS products for purposes other than those for which they were created may yield inaccurate or misleading results. The Corps of Engineers reserves the right to correct, update, modify, or replace GIS products without notification.

002 Redfish Reef to Beacon 76



Legend

- Shoalest Sounding
- Channel Centerline
- Channel Toe

Bathymetry Raster

Depth in Feet

- 7 - 20
- 20 - 25
- 25 - 32
- 32 - 35
- 35 - 38
- 38 - 42
- 42 - 44
- 44 - 45
- 45 - 47

Aids To Navigation

- ▲ Red Side Aid
- ◆ Red Side Aid
- ▲ Green Side Aid
- ◆ Green Side Aid



0 250 500 1,000 Feet

Projection: NAD 1983 StatePlane Texas South Central FIPS 4204 Feet, Units: Foot US
Map Scale= 1:6,000

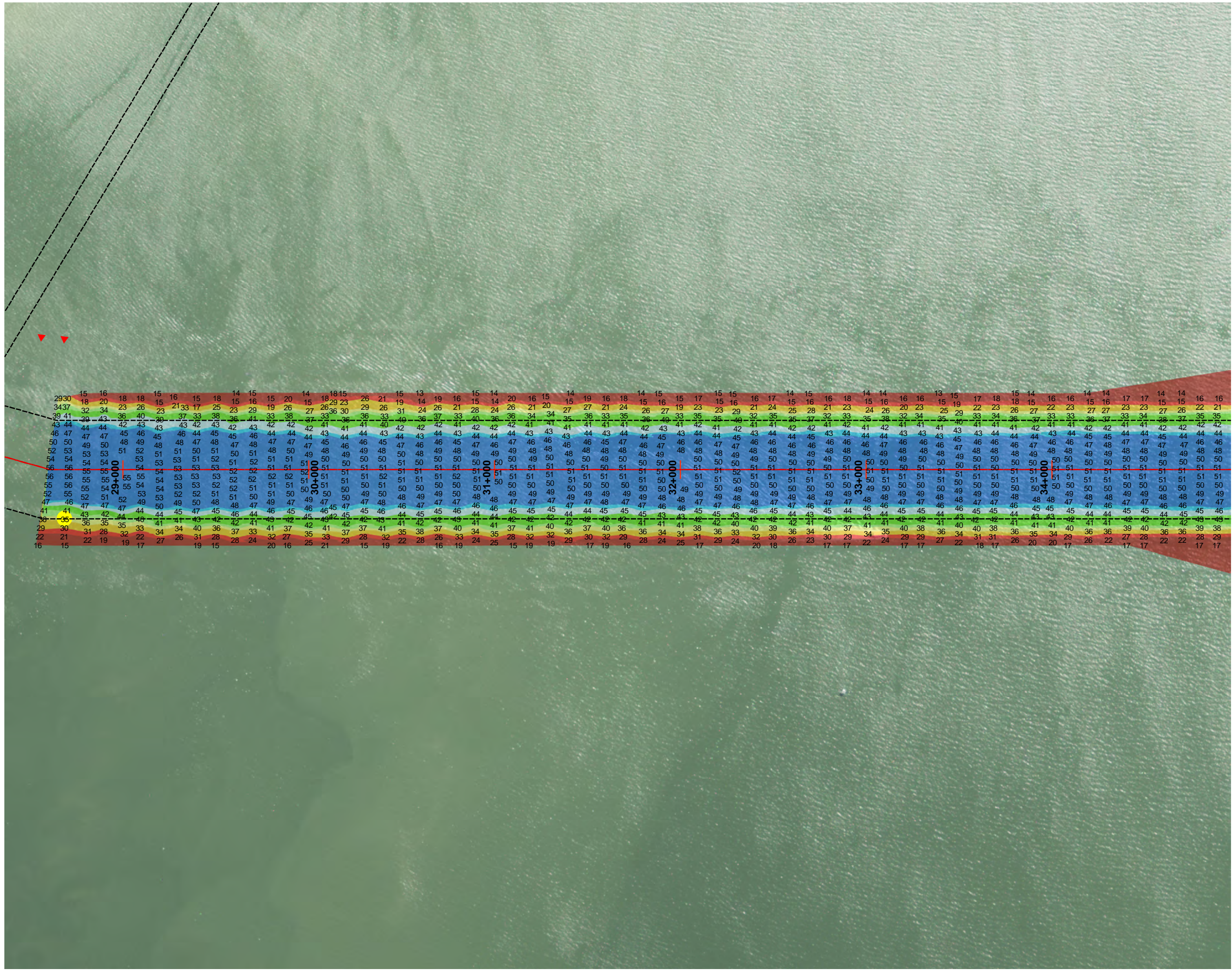
Survey Date: 10 March 2014

Print Date: 5/13/2014



This product is reproduced from geospatial information prepared by the U.S. Army Corps of Engineers. GIS data and product accuracy may vary. Data may be developed from sources of differing accuracy, accurate only at certain scales, based on modeling or interpretation, incomplete while being created or revised, etc. Using GIS products for purposes other than those for which they were created may yield inaccurate or misleading results. The Corps of Engineers reserves the right to correct, update, modify, or replace GIS products without notification.

002 Redfish Reef to Beacon 76



Legend

- Shoalest Sounding
- Channel Centerline
- Channel Toe

Bathymetry Raster

Depth in Feet

- 7 - 20
- 20 - 25
- 25 - 32
- 32 - 35
- 35 - 38
- 38 - 42
- 42 - 44
- 44 - 45
- 45 - 47

Aids To Navigation


- ▲ Red Side Aid
- ◆ Red Side Aid
- ▲ Green Side Aid
- ◆ Green Side Aid



Projection: NAD 1983 StatePlane Texas South Central FIPS 4204 Feet, Units: Foot US
Map Scale= 1:6,000

Survey Date: 10 March 2014

Print Date: 5/13/2014



This product is reproduced from geospatial information prepared by the U.S. Army Corps of Engineers. GIS data and product accuracy may vary. Data may be developed from sources of differing accuracy, accurate only at certain scales, based on modeling or interpretation, incomplete while being created or revised, etc. Using GIS products for purposes other than those for which they were created may yield inaccurate or misleading results. The Corps of Engineers reserves the right to correct, update, modify, or replace GIS products without notification.