

004 Morgans Point to Exxon Oil Slip



**Legend**

- Shoalest Sounding
- Channel Centerline
- Channel Toe
- ▲ Red Side Aid
- ◆ Red Side Aid
- ▲ Green Side Aid
- ◆ Green Side Aid

**Bathymetry Raster**

**Depth in Feet**

	7 - 20
	20 - 25
	25 - 32
	32 - 35
	35 - 38
	38 - 42
	42 - 44
	44 - 45
	45 - 47



0 250 500 1,000 Feet

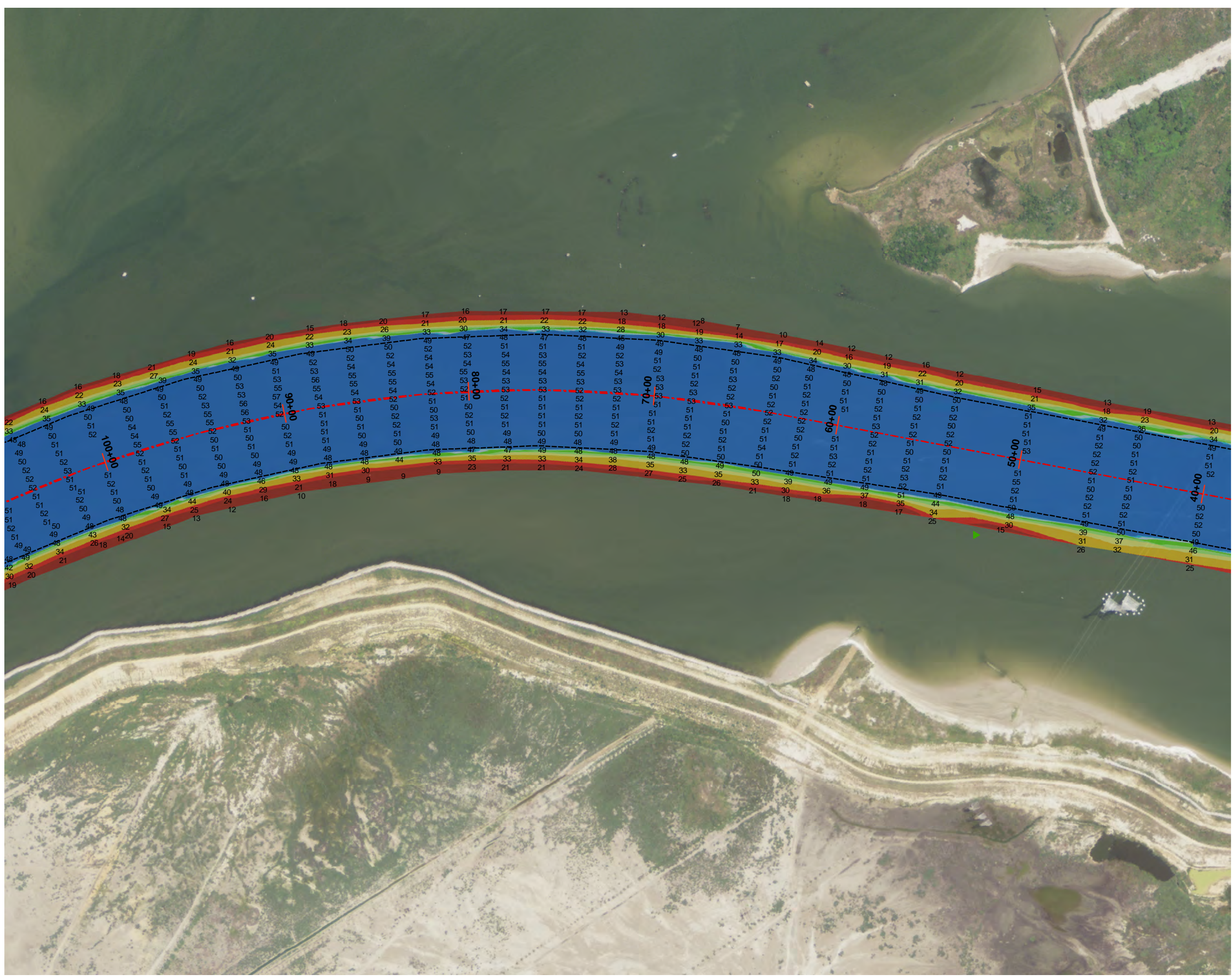
Projection: NAD 1983 StatePlane Texas South Central FIPS 4204 Feet, Units: Foot US  
Map Scale= 1:6,000

Survey Date: 14 March 2014

Print Date: 5/13/2014



This product is reproduced from geospatial information prepared by the U.S. Army Corps of Engineers. GIS data and product accuracy may vary. Data may be developed from sources of differing accuracy, accurate only at certain scales, based on modeling or interpretation, incomplete while being created or revised, etc. Using GIS products for purposes other than those for which they were created may yield inaccurate or misleading results. The Corps of Engineers reserves the right to correct, update, modify, or replace GIS products without notification.



004 Morgans Point to Exxon Oil Slip



**Legend**

- Shoalest Sounding
- Channel Centerline
- Channel Toe
- ▲ Red Side Aid
- ◆ Red Side Aid
- ▲ Green Side Aid
- ◆ Green Side Aid

**Bathymetry Raster**

**Depth in Feet**

	7 - 20
	20 - 25
	25 - 32
	32 - 35
	35 - 38
	38 - 42
	42 - 44
	44 - 45
	45 - 47

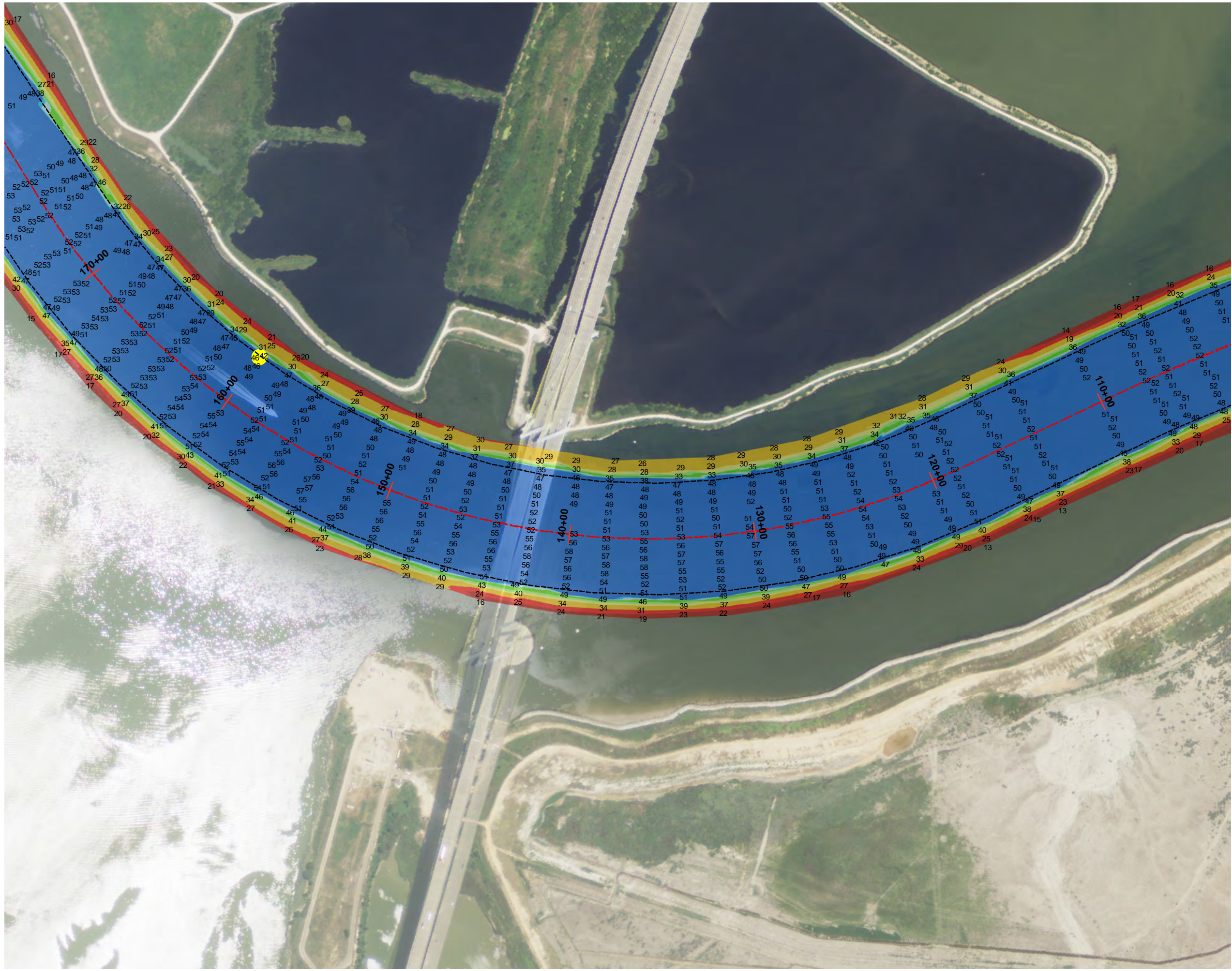


Projection: NAD 1983 StatePlane Texas South Central FIPS 4204 Feet, Units: Foot US  
Map Scale= 1:6,000

Survey Date: 14 March 2014

Print Date: 5/13/2014

This product is reproduced from geospatial information prepared by the U.S. Army Corps of Engineers. GIS data and product accuracy may vary. Data may be developed from sources of differing accuracy, accurate only at certain scales, based on modeling or interpretation, incomplete while being created or revised, etc. Using GIS products for purposes other than those for which they were created may yield inaccurate or misleading results. The Corps of Engineers reserves the right to correct, update, modify, or replace GIS products without notification.



004 Morgans Point to Exxon Oil Slip



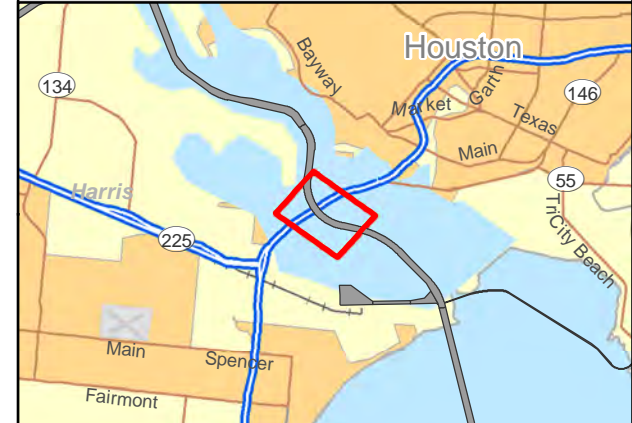
**Legend**

- Shoalest Sounding
- Channel Centerline
- Channel Toe
- ▲ Red Side Aid
- ◆ Red Side Aid
- ▲ Green Side Aid
- ◆ Green Side Aid

**Bathymetry Raster**

**Depth in Feet**

	7 - 20
	20 - 25
	25 - 32
	32 - 35
	35 - 38
	38 - 42
	42 - 44
	44 - 45
	45 - 47



Projection: NAD 1983 StatePlane Texas South Central FIPS 4204 Feet, Units: Foot US  
Map Scale= 1:6,000

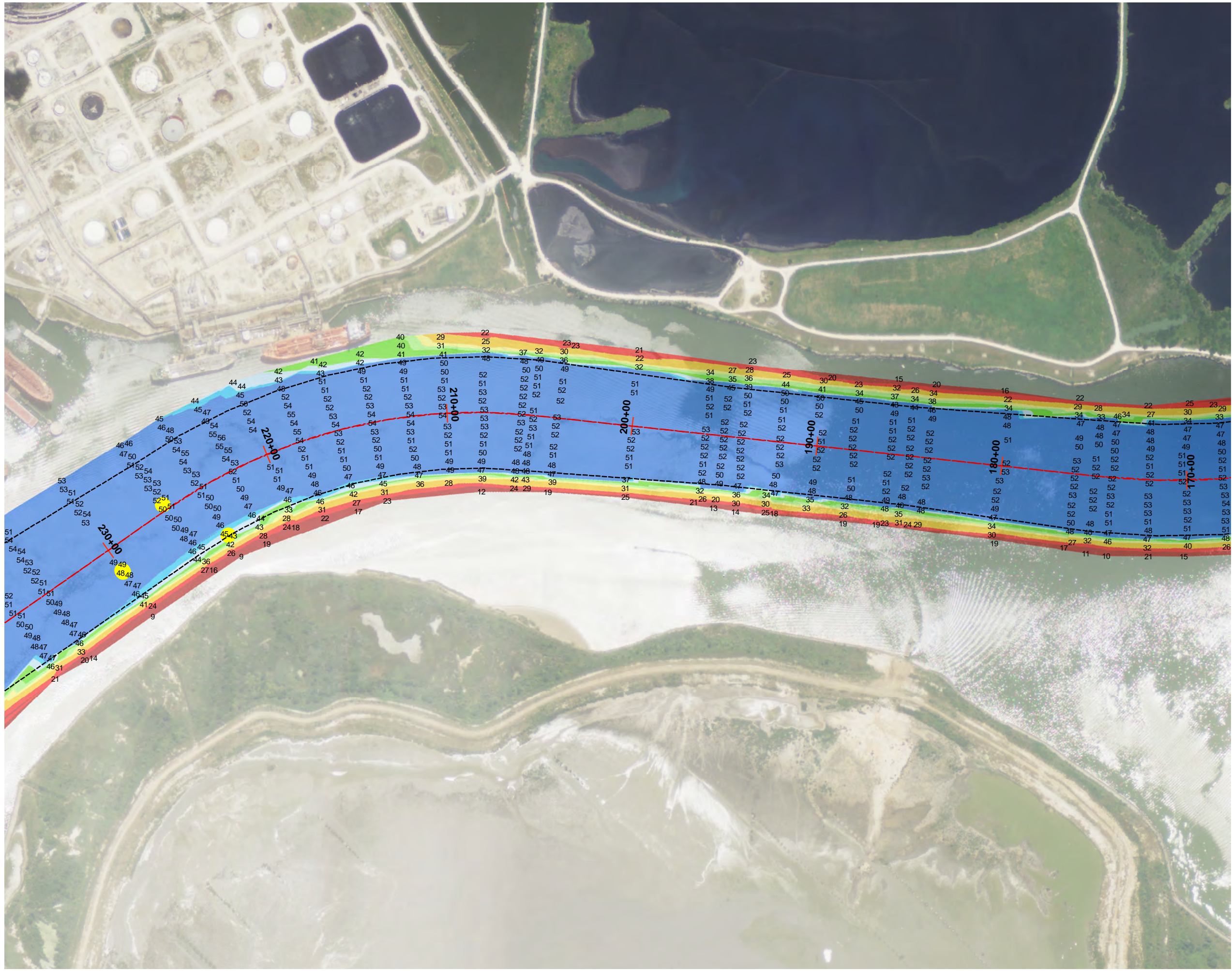
Survey Date: 14 March 2014

Print Date: 5/13/2014



This product is reproduced from geospatial information prepared by the U.S. Army Corps of Engineers. GIS data and product accuracy may vary. Data may be developed from sources of differing accuracy, accurate only at certain scales, based on modeling or interpretation, incomplete while being created or revised, etc. Using GIS products for purposes other than those for which they were created may yield inaccurate or misleading results. The Corps of Engineers reserves the right to correct, update, modify, or replace GIS products without notification.

004 Morgans Point to Exxon Oil Slip



**Legend**

- Shoalest Sounding
- Channel Centerline
- Channel Toe

**Bathymetry Raster**

Depth in Feet	Color
7 - 20	Red
20 - 25	Orange
25 - 32	Yellow
32 - 35	Light Green
35 - 38	Green
38 - 42	Light Blue
42 - 44	Blue
44 - 45	Dark Blue
45 - 47	Very Dark Blue

**Aids To Navigation**

- ▲ Red Side Aid
- ◆ Red Side Aid
- ▲ Green Side Aid
- ◆ Green Side Aid



Projection: NAD 1983 StatePlane Texas South Central FIPS 4204 Feet, Units: Foot US  
Map Scale= 1:6,000

Survey Date: 14 March 2014

Print Date: 5/13/2014



This product is reproduced from geospatial information prepared by the U.S. Army Corps of Engineers. GIS data and product accuracy may vary. Data may be developed from sources of differing accuracy, accurate only at certain scales, based on modeling or interpretation, incomplete while being created or revised, etc. Using GIS products for purposes other than those for which they were created may yield inaccurate or misleading results. The Corps of Engineers reserves the right to correct, update, modify, or replace GIS products without notification.