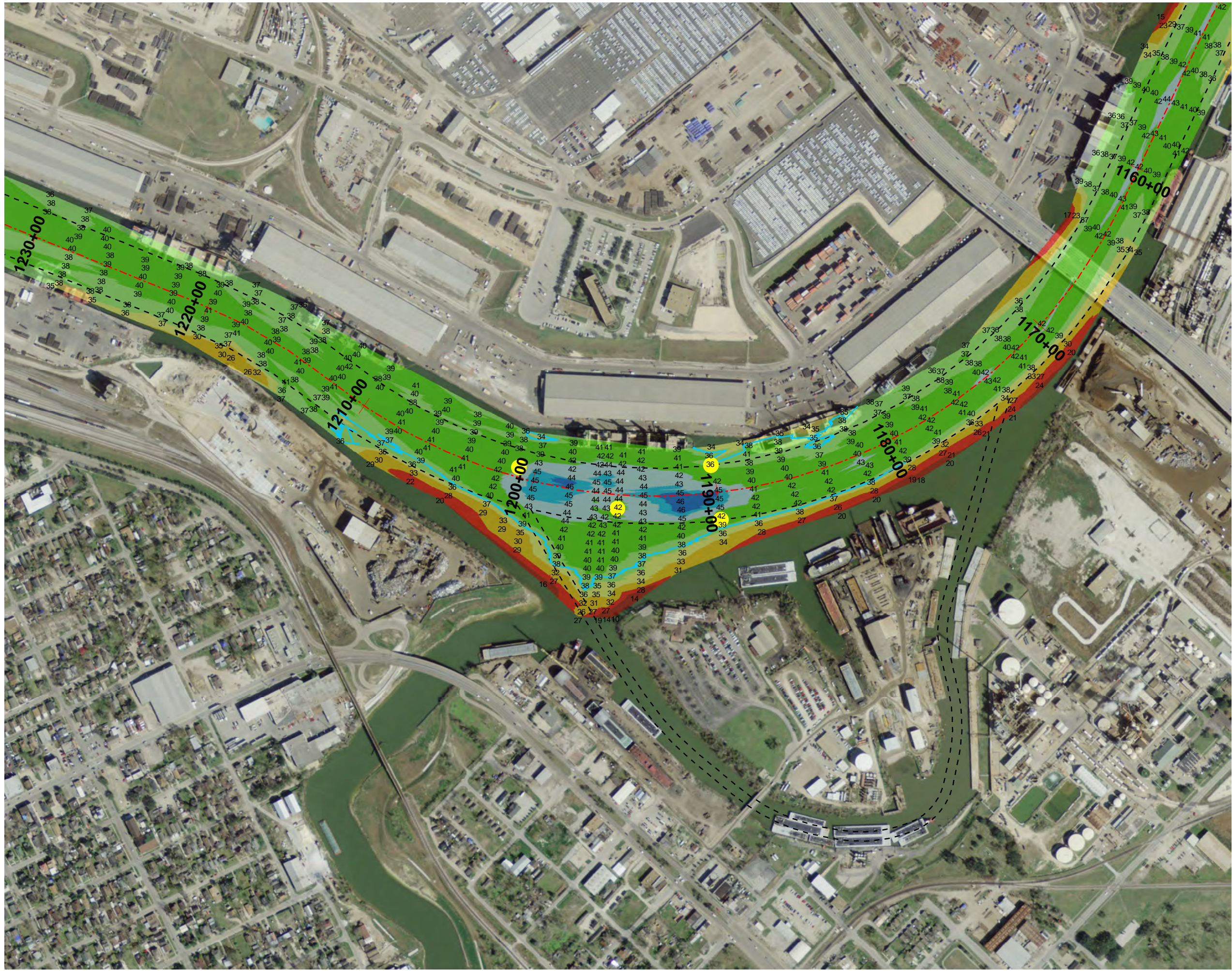


10a Turning Point at Brady Island



Legend

- Shoalest Sounding
- Contour Lines
- Channel Centerline
- Channel Toe

Depths in Feet

	7 - 20
	20 - 25
	25 - 32
	32 - 35
	35 - 38
	38 - 42
	42 - 44
	44 - 45
	45 - 47



0 250 500 1,000 Feet

Projection: NAD 1983 StatePlane Texas South Central FIPS 4204 Feet, Units: Foot US
Map Scale= 1:6,000

Survey Date: 13 March 2014

Print Date: 3/26/2014



This product is reproduced from geospatial information prepared by the U.S. Army Corps of Engineers. GIS data and product accuracy may vary. Data may be developed from sources of differing accuracy, accurate only at certain scales, based on modeling or interpretation, incomplete while being created or revised, etc. Using GIS products for purposes other than those for which they were created may yield inaccurate or misleading results. The Corps of Engineers reserves the right to correct, update, modify, or replace GIS products without notification.