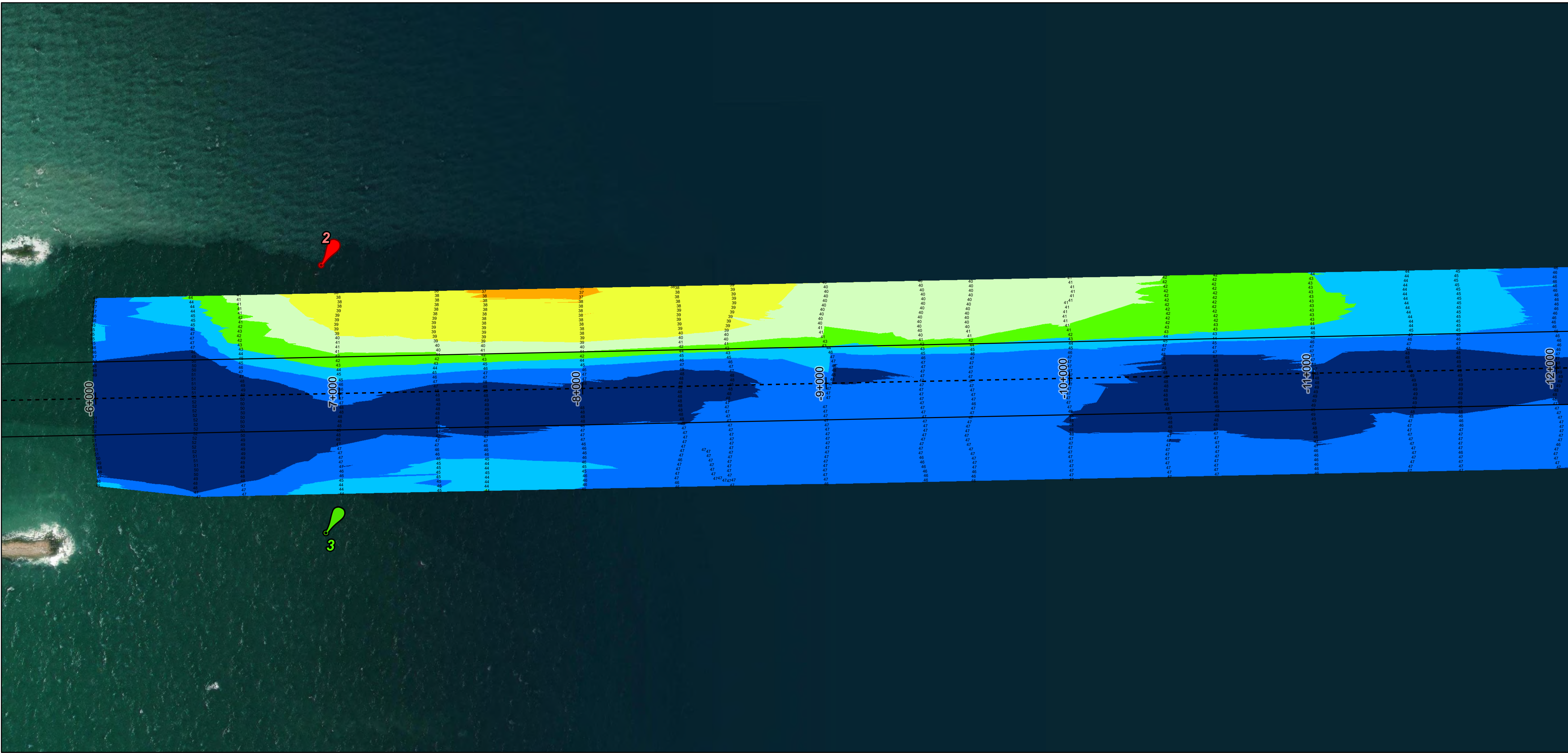
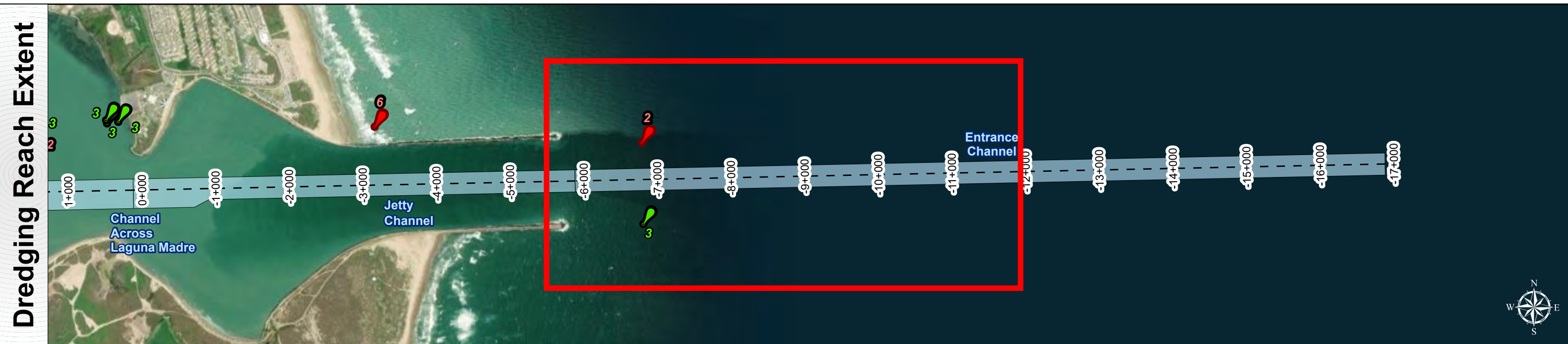
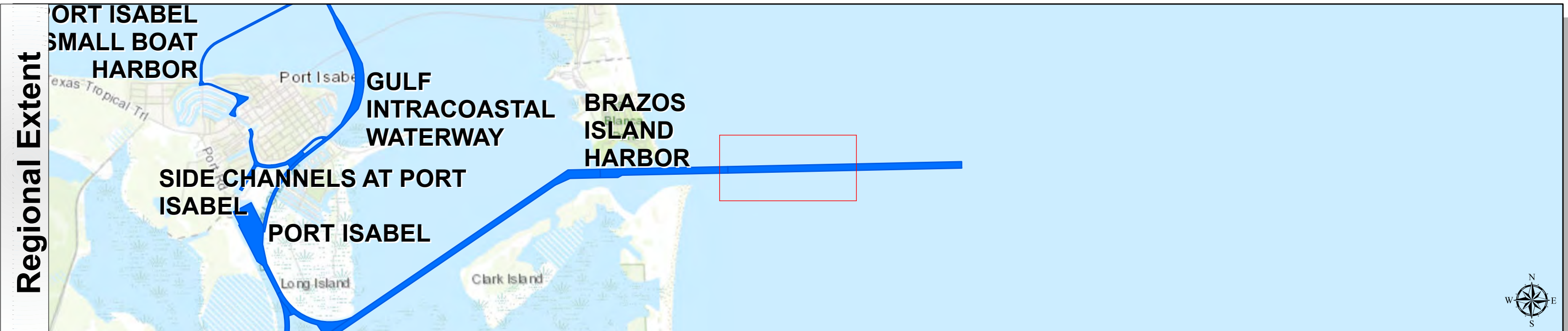


Brazos Island Harbor: Entrance Channel



U.S. Army Corps of Engineers
Galveston District



Channel Features

- Channel Center Line
- Channel Toe
- Channel Dimensions

Aids to Navigation

- Green Side Aids
- Red Side Aids
- Lights

MLLW

7 - 30	30 - 36	36 - 38	38 - 40	40 - 42	42 - 44	44 - 46	46 - 48	< 50
Red	Orange	Yellow	Light Green	Green	Dark Green	Blue	Dark Blue	Black

NOTES:
1. Horizontal coordinates are referenced to Texas state plane coordinate system, south central zone nad83 us survey feet.
2. Elevations are referenced to mean lower low tide (MLLW) datum.
3. This project was designed by the galveston district of the u.s. army corps of engineers. The initials and signatures and registration designations of individuals appear on these project documents within the scope of their employment as required by er11105-61152.
4. The information depicted on this survey map represents the results of surveys made on the dates indicated and can only be considered as indicating the general conditions existing at that time. These conditions are subject to rapid change due to shoaling events. A prudent mariner should not rely exclusively on the information provided here. Required by 33 CFR 209.325
5. For the most up to date information please check our website at: <http://www.svg.usace.army.mil/Missions/Navigation/HydrographicSurveys/>
Service Layer Credits: World Topographic Map: Texas Parks & Wildlife, Esri, HERE, Garmin, INCREMENT P, USGS, MET/NASA, NGA, EPA, USDA
World Imagery: Maxar, Microsoft
World Imagery: Maxar
World Ocean Base: Esri, GEBCO, Garmin, NaturalVue

Additional Combined Survey Dates and Stationing:
COMB_SURV_INFO_HERE

Coordinate System: NAD 1983 StatePlane Texas South FIPS 4205 Feet
Projection: Lambert Conformal Conic

Dredging Reach Extent

0	0.25	0.5	1
Miles			

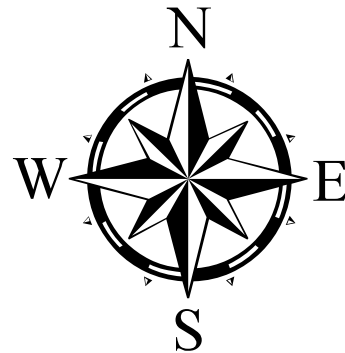
Hydrographic Survey Extent

0	205	410	820
Feet			

Hydrographic Survey
U.S. ARMY ENGINEER DISTRICT
CORPS OF ENGINEERS
GALVESTON, TEXAS

Station: -20+000 to -6+000
Brazos Island Harbor
Entrance Channel

Latest Survey Collection Date: 05 March 2024		Authorized Depth: -44ft.
Document Page: 2 of 2	Website Index Number: 2	Side Slope Ratio: 1:2.5 (Rise : Run)
Scale: 1:2,400		PDF Print Date: 3/7/2024
Mapped by: M3AOXPAC		
Additional Imagery info:		

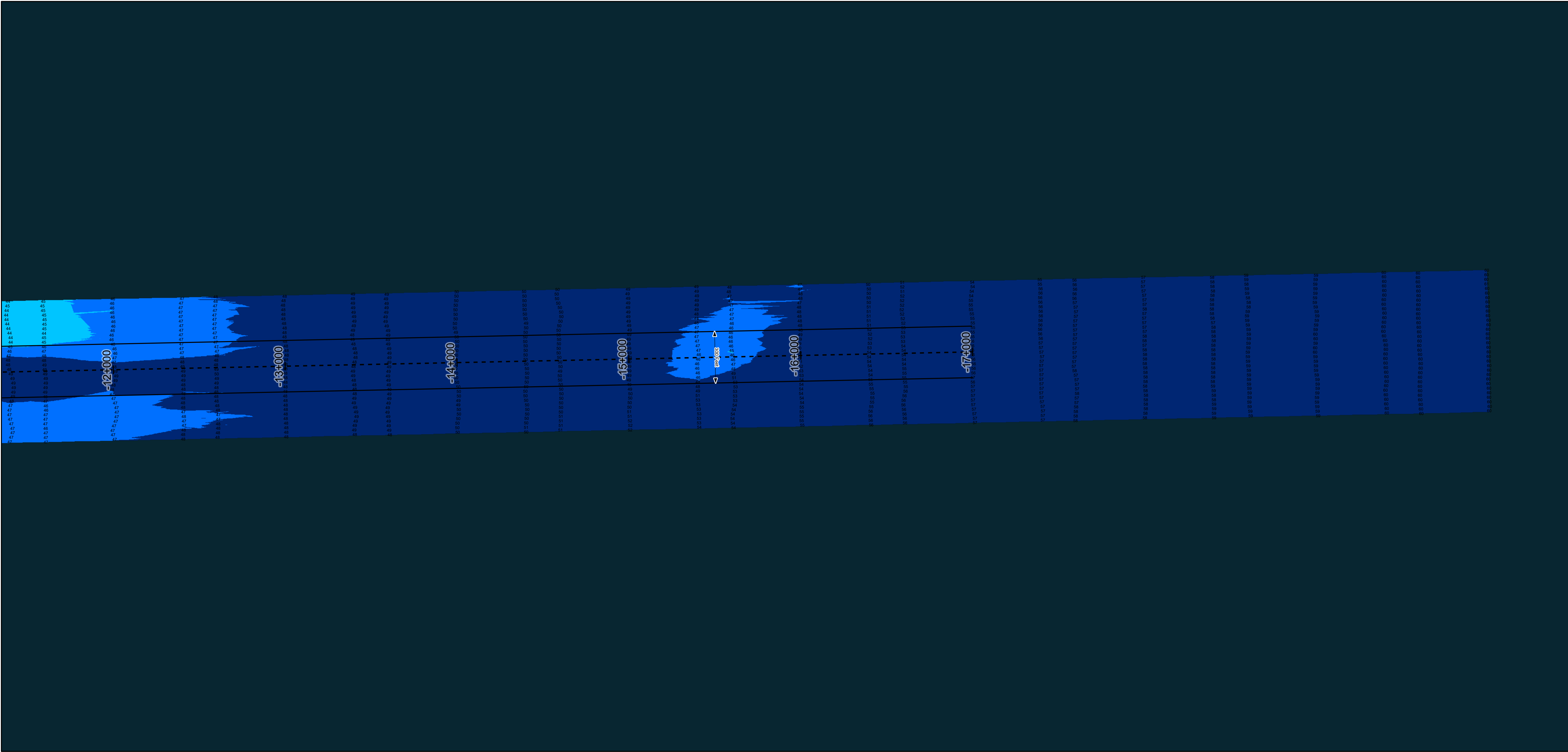
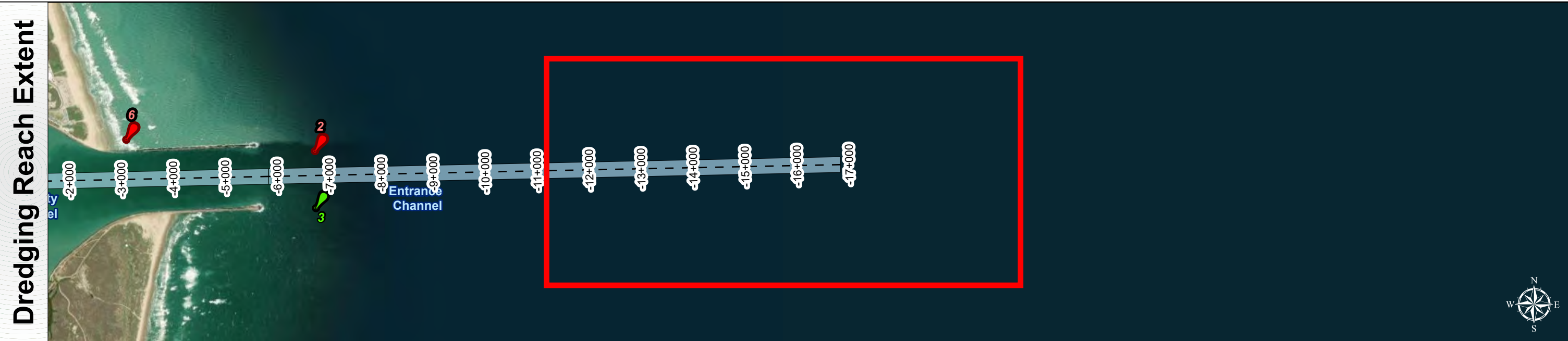
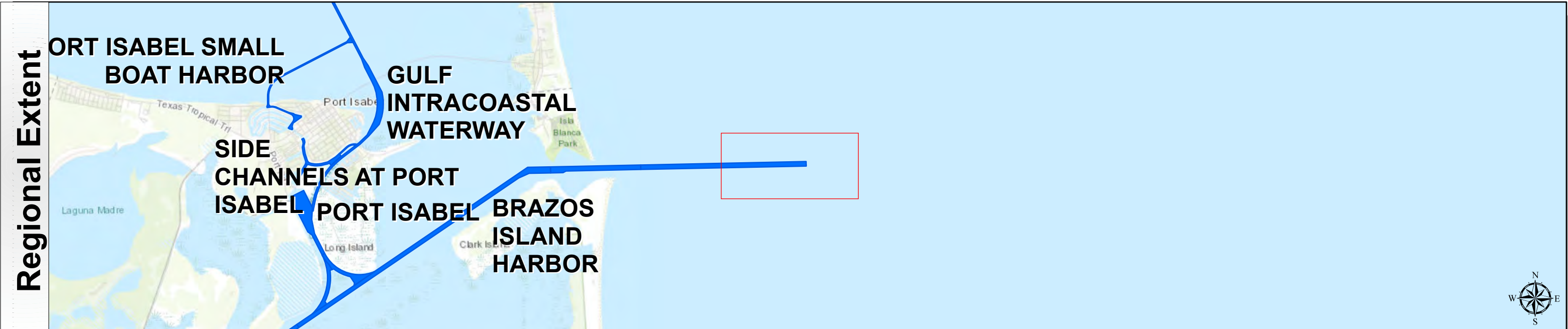


HYDROGRAPHIC SURVEY
U.S. ARMY ENGINEER DISTRICT
CORPS OF ENGINEERS
GALVESTON, TEXAS
Station: -20+000 to -6+000
Brazos Island Harbor
Entrance Channel

Brazos Island Harbor: Entrance Channel

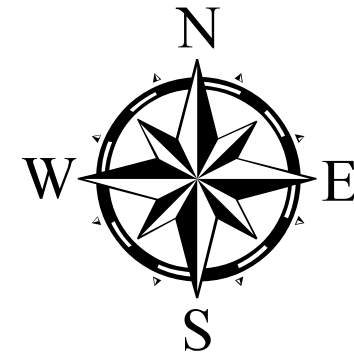


U.S. Army Corps of Engineers
Galveston District



Channel Features	Aids to Navigation	MLLW	NOTES: 1. Horizontal coordinates are referenced to Texas state plane coordinate system, south central zone nad83 us survey feet. 2. Elevations are referenced to mean lower low tide (MLLW) datum. 3. This project was designed by the Galveston District of the U.S. Army Corps of Engineers. The initials and signatures and registration designations of individuals appear on these project documents within the scope of their employment as required by 47 CFR 111.11-111.12. 4. The information depicted on this survey map represents the results of surveys made on the dates indicated and can only be considered as indicating the general conditions existing at that time. These conditions are subject to rapid change due to shoaling events. A prudent mariner should not rely exclusively on the information provided here. Required by 33 CFR 209.325. 5. For the most up to date information please check our website at: http://www.svg.usace.army.mil/Missions/Navigation/HydrographicSurveys/ Service Layer Credits: World Topographic Map: Texas Parks & Wildlife, Esri, HERE, Garmin, INCREMENT P, USGS, METINASA, NGA, EPA, USDA World Imagery: Maxar World Ocean Base: Esri, GEBCO, Garmin, NaturalVue	Additional Combined Survey Dates and Stationing: COMB_SURV_INFO_HERE	Coordinate System: NAD 1983 StatePlane Texas South FIPS 4205 Feet Projection: Lambert Conformal Conic
<ul style="list-style-type: none">Channel Center LineChannel ToeChannel Dimensions	<ul style="list-style-type: none">Green Side AidsRed Side AidsLights				Dredging Reach Extent 0 0.35 0.7 1.4 Miles
					Hydrographic Survey Extent 0 290 580 1,160 Feet

Latest Survey Collection Date: 05 March 2024		Authorized Depth: -44ft.	
Document Page: 1 of 2	Website Index Number: 1	Side Slope Ratio: 1:2.5 (Rise : Run)	
Scale: 1:3,400		PDF Print Date: 3/7/2024	
Mapped by: M3AOXPAC			
Additional Imagery info:			



HYDROGRAPHIC SURVEY
U.S. ARMY ENGINEER DISTRICT
CORPS OF ENGINEERS
GALVESTON, TEXAS
Station: -20+000 to -6+000
BRAZOS ISLAND HARBOR
Entrance Channel