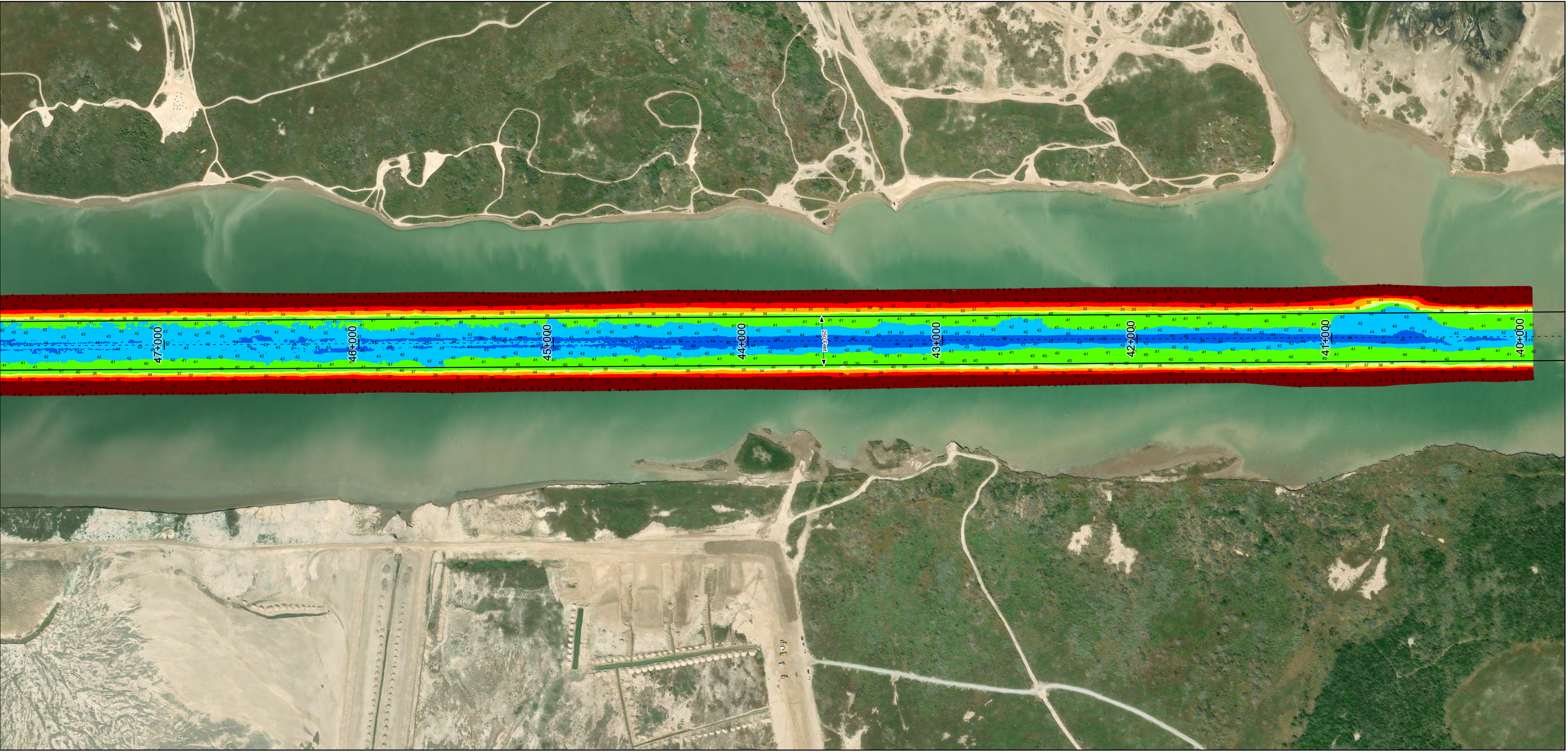


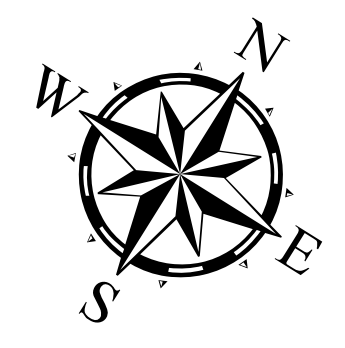
# Brazos Island Harbor: Boca Chica Passing Basin to Goose Island Passing Basin



U.S. Army Corps of Engineers  
Galveston District



Authorized Depth: -4.2ft.	Latest Survey Collection Date: 11 April 2025
Width Range: 250ft to 300ft	Document Page: 1 of 4
Side Slope Ratio: 1:2.5 (Rise : Run)	Scale: 1:3,000
PDF Print Date: 4/25/2025	Mapped by: m3odnmhg
	Website Index Number: 10
	Additional Imagery info:

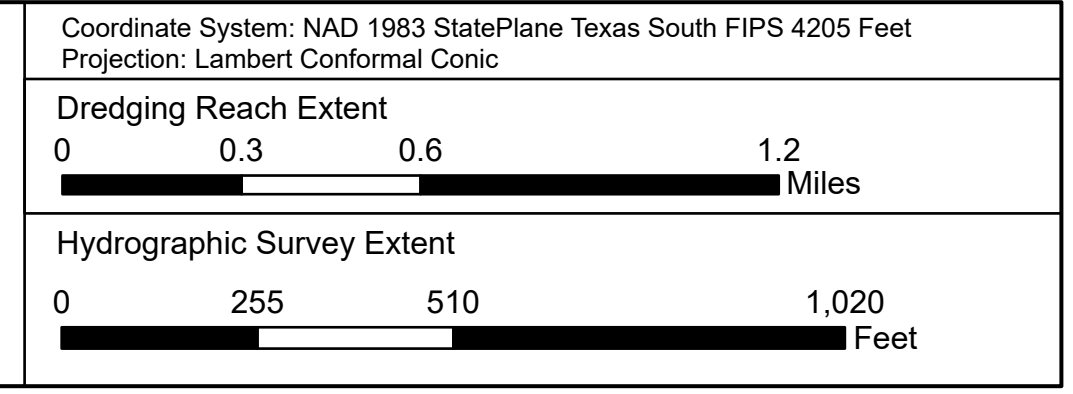


<b>Channel Features</b> Channel Center Line Channel Toe Channel Dimensions	<b>Aids to Navigation</b> Green Side Aids Red Side Aids Lights	<b>MLLW</b> 
---	---	-----------------

**NOTES:**  
 1. Horizontal coordinates are referenced to Texas State Plane Coordinate System, South Zone NAD83 US Survey Feet.  
 2. Elevations are referenced to Mean Lower Low Water (MLLW) datum.  
 3. This project was designed by the Galveston District of the U.S. Army Corps of Engineers. The initials and signatures and registration designations of individuals appear on these project documents within the scope of their employment as required by 47 CFR 11.101-1.8132.  
 4. The information depicted on this survey map represents the results of surveys made on the dates indicated and can only be considered as indicating the general conditions existing at that time. These conditions are subject to rapid change due to shoaling events. A prudent mariner should not rely exclusively on the information provided here. Required by 33 CFR 209.225.  
 5. For the most up to date information please check our website at: <http://www.svg.usace.army.mil/Missions/Navigation/HydrographicSurveys/>

Service Layer Credits: World Topographic Map: Texas Parks & Wildlife, Esri, HERE, Garmin, INCREMENT P, USGS, METINASA, NGA, EPA, USDA  
 World Imagery: Source: Esri, Maxar, Earthstar Geographics, and the GIS User Community  
 World Ocean Base: Esri, GEBCO, Garmin, NaturalVue

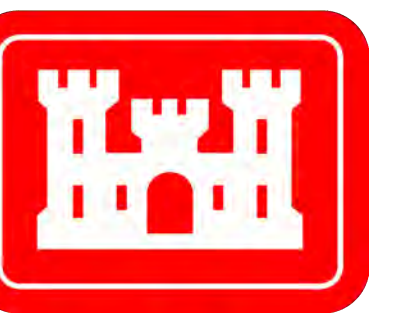
Additional Combined Survey Dates and Stationing:  
 Combined surveys: 20250320\_CS; 20250411\_AD\_03\_49P000\_53P200.



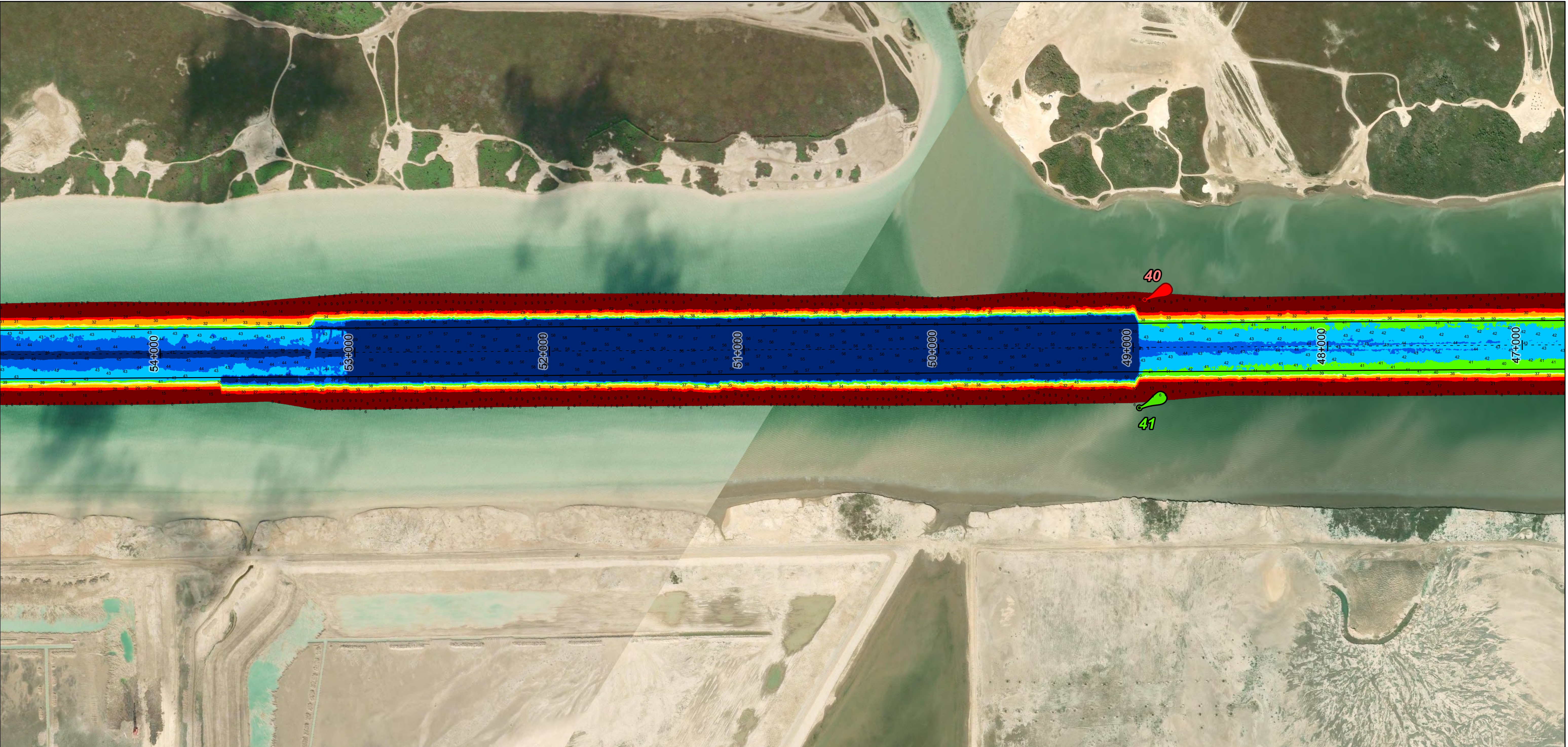
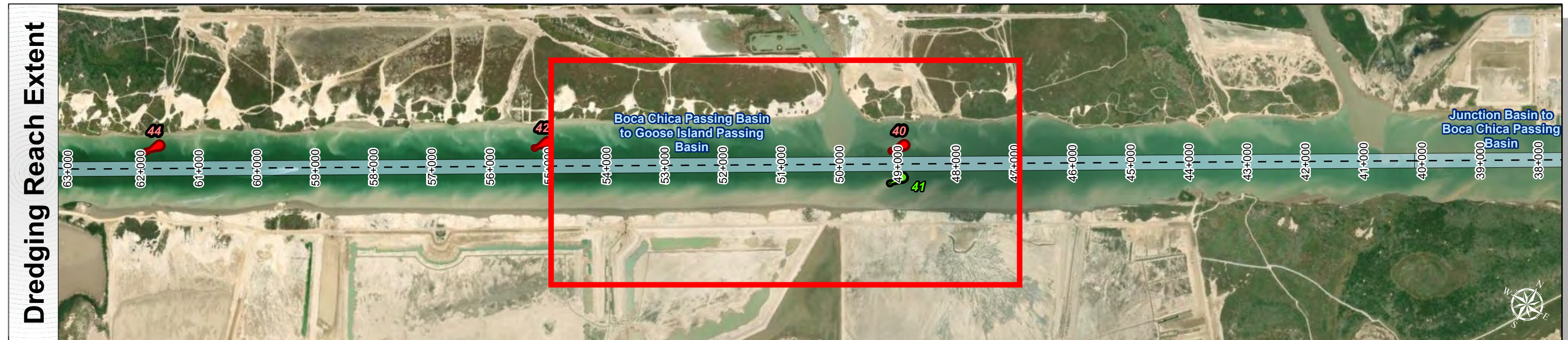
**HYDROGRAPHIC SURVEY**  
 U.S. ARMY ENGINEER DISTRICT  
 CORPS OF ENGINEERS  
 GALVESTON, TEXAS

**Station: 40+000 to 68+000**  
**BRAZOS ISLAND HARBOR**  
 Boca Chica Passing Basin to Goose Island Passing Basin

# Brazos Island Harbor: Boca Chica Passing Basin to Goose Island Passing Basin



U.S. Army Corps of Engineers  
Galveston District



Latest Survey Collection Date: 11 April 2025	Authorized Depth: -42ft.
Document Page: 2 of 4	Width Range: 250ft to 300ft
Scale: 1:3,000	Side Slope Ratio: 1:2.5 (Rise : Run)
Mapped by: m3odnmhg	PDF Print Date: 4/25/2025
Additional Imagery info:	
Website Index Number: 11	



**Channel Features**

- Channel Center Line
- Channel Toe
- ↔ Channel Dimensions

**Aids to Navigation**

- Green Side Aids
- Red Side Aids
- Lights

**MLLW**

0 - 25	25 - 30	30 - 35	35 - 37	37 - 39	39 - 42	42 - 44	44 - 46	< 46
--------	---------	---------	---------	---------	---------	---------	---------	------

**NOTES:**

- Horizontal coordinates are referenced to Texas State Plane Coordinate System, South Zone NAD83 US Survey Feet.
- Elevations are referenced to Mean Lower Low Water (MLLW) datum.
- This project was designed by the Galveston District of the U.S. Army Corps of Engineers. The initials and signatures and registration designations of individuals appear on these project documents within the scope of their employment as required by er1110-1-8132.
- The information depicted on this survey map represents the results of surveys made on the dates indicated and can only be considered as indicating the general conditions existing at that time. These conditions are subject to rapid change due to shoaling events. A prudent mariner should not rely exclusively on the information provided here. Required by 33 CFR 209.225
- For the most up to date information please check our website at: <http://www.svg.usace.army.mil/Missions/Navigation/HydrographicSurveys/>

Service Layer Credits: World Topographic Map: Texas Parks & Wildlife, Esri, HERE, Garmin, INCREMENT P, USGS, METINASA, NGA, EPA, USDA  
World Imagery Source: Esri, Maxar, Earthstar Geographics, and the GIS User Community  
World Ocean Base: Esri, GEBCO, Garmin, NaturalView

Additional Combined Survey Dates and Stationing:  
Combined surveys: 20250320\_CS; 20250411\_AD\_03\_49P000\_53P200.

**Dredging Reach Extent**

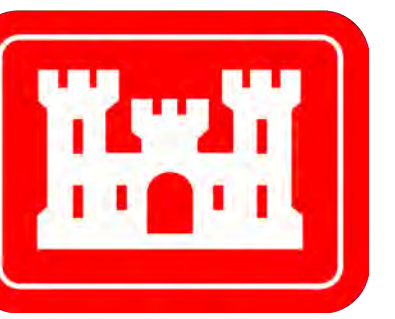
**Hydrographic Survey Extent**

Coordinate System: NAD 1983 StatePlane Texas South FIPS 4205 Feet  
Projection: Lambert Conformal Conic

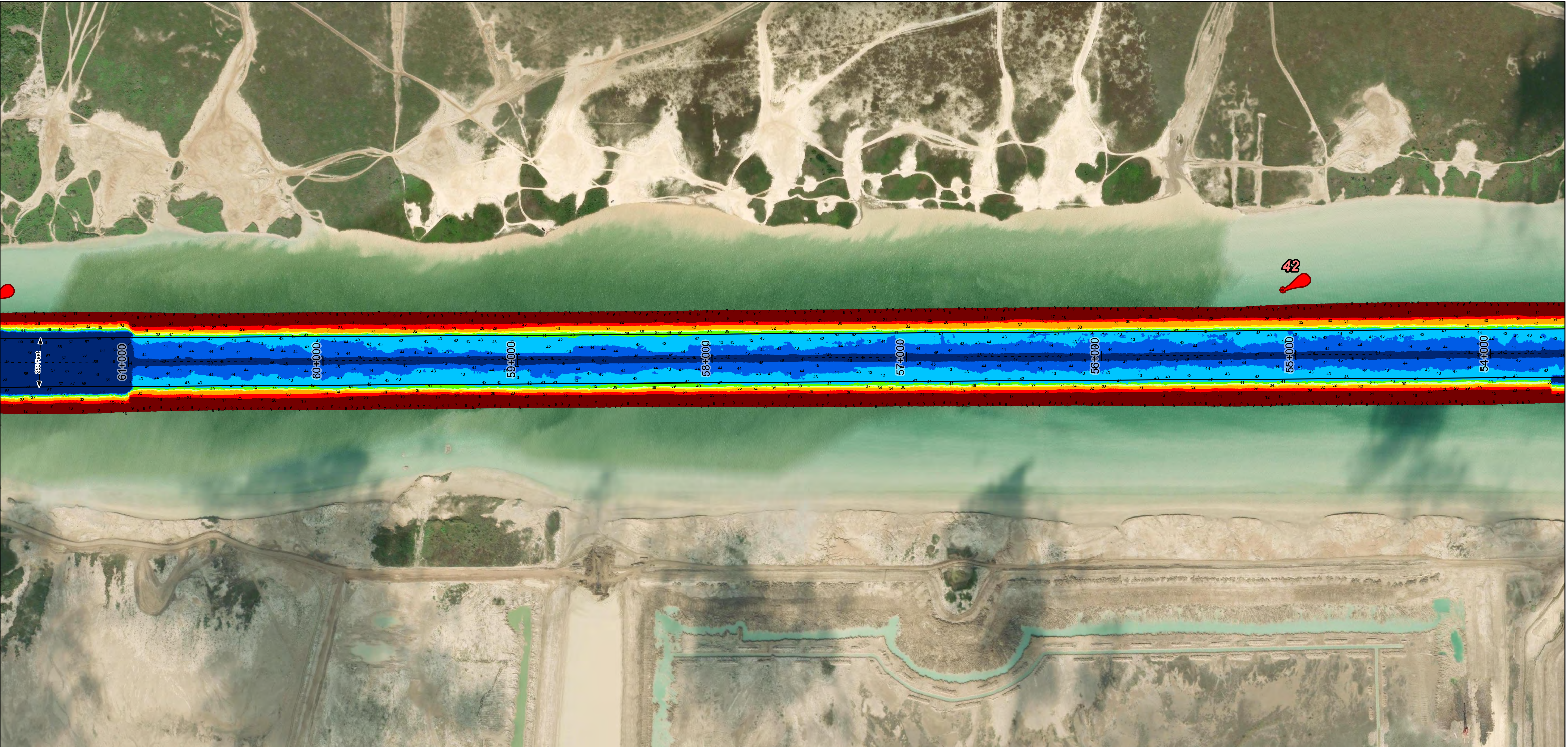
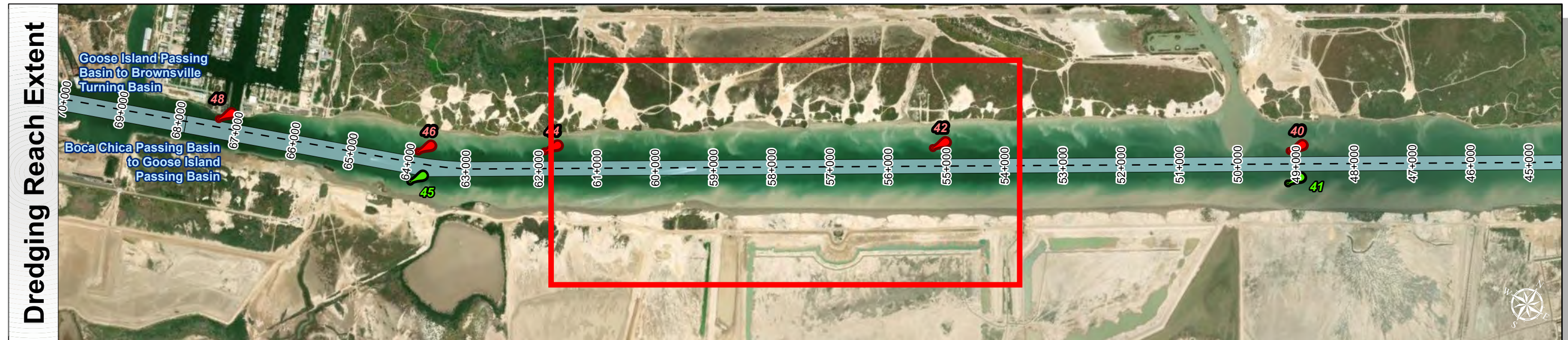
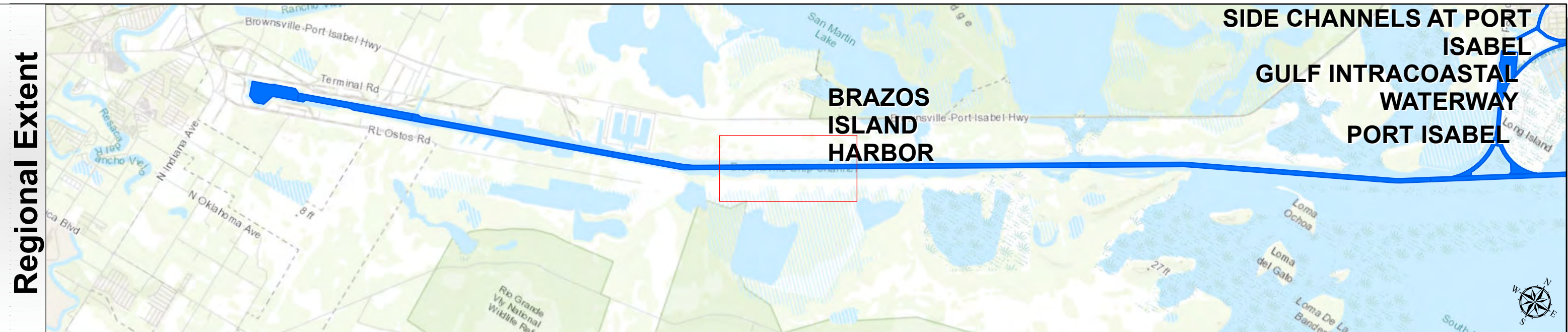
**HYDROGRAPHIC SURVEY**  
U.S. ARMY ENGINEER DISTRICT  
CORPS OF ENGINEERS  
GALVESTON, TEXAS

**Station: 40+000 to 68+000**  
**BRAZOS ISLAND HARBOR**  
Boca Chica Passing Basin to Goose Island Passing Basin

# Brazos Island Harbor: Boca Chica Passing Basin to Goose Island Passing Basin



U.S. Army Corps of Engineers  
Galveston District



Latest Survey Collection Date: 11 April 2025	Authorized Depth: -42ft.
Document Page: 3 of 4	Width Range: 250ft to 300ft
Scale: 1:3,000	Side Slope Ratio: 1:2.5 (Rise : Run)
Mapped by: m3odnmh	PDF Print Date: 4/25/2025
Additional Imagery info:	



**Channel Features**

- Channel Center Line
- Channel Toe
- Channel Dimensions

**Aids to Navigation**

- Green Side Aids
- Red Side Aids
- Lights

**MLLW**

0 - 25	25 - 30	30 - 35	35 - 37	37 - 39	39 - 42	42 - 44	44 - 46	< 46
--------	---------	---------	---------	---------	---------	---------	---------	------

**NOTES:**

- Horizontal coordinates are referenced to Texas State Plane Coordinate System, South Zone NAD83 US Survey Feet.
- Elevations are referenced to Mean Lower Low Water (MLLW) datum.
- This project was designed by the Galveston District of the U.S. Army Corps of Engineers. The initials and signatures and registration designations of individuals appear on these project documents within the scope of their employment as required by er1110-1-8132.
- The information depicted on this survey map represents the results of surveys made on the dates indicated and can only be considered as indicating the general conditions existing at that time. These conditions are subject to rapid change due to shoaling events. A prudent mariner should not rely exclusively on the information provided here. Required by 33 CFR 209.225
- For the most up to date information please check our website at: <http://www.svg.usace.army.mil/Missions/Navigation/HydrographicSurveys/>

Service Layer Credits: World Topographic Map: Texas Parks & Wildlife, Esri, HERE, Garmin, INCREMENT P, USGS, METINASA, NGA, EPA, USDA  
World Imagery: Source: Esri, Maxar, Earthstar Geographics, and the GIS User Community  
World Ocean Base: Esri, GEBCO, Garmin, NaturalView

**Additional Combined Survey Dates and Stationing:**  
Combined surveys: 20250320\_CS; 20250411\_AD\_03\_49P000\_53P200.

**Dredging Reach Extent**

0 0.3 0.6 1.2 Miles

**Hydrographic Survey Extent**

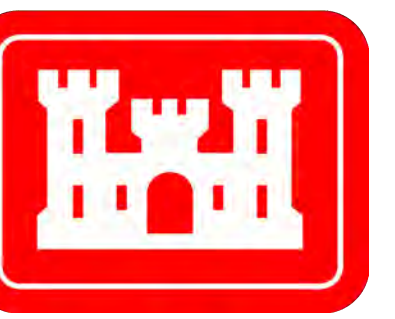
0 255 510 1,020 Feet

Coordinate System: NAD 1983 StatePlane Texas South FIPS 4205 Feet  
Projection: Lambert Conformal Conic

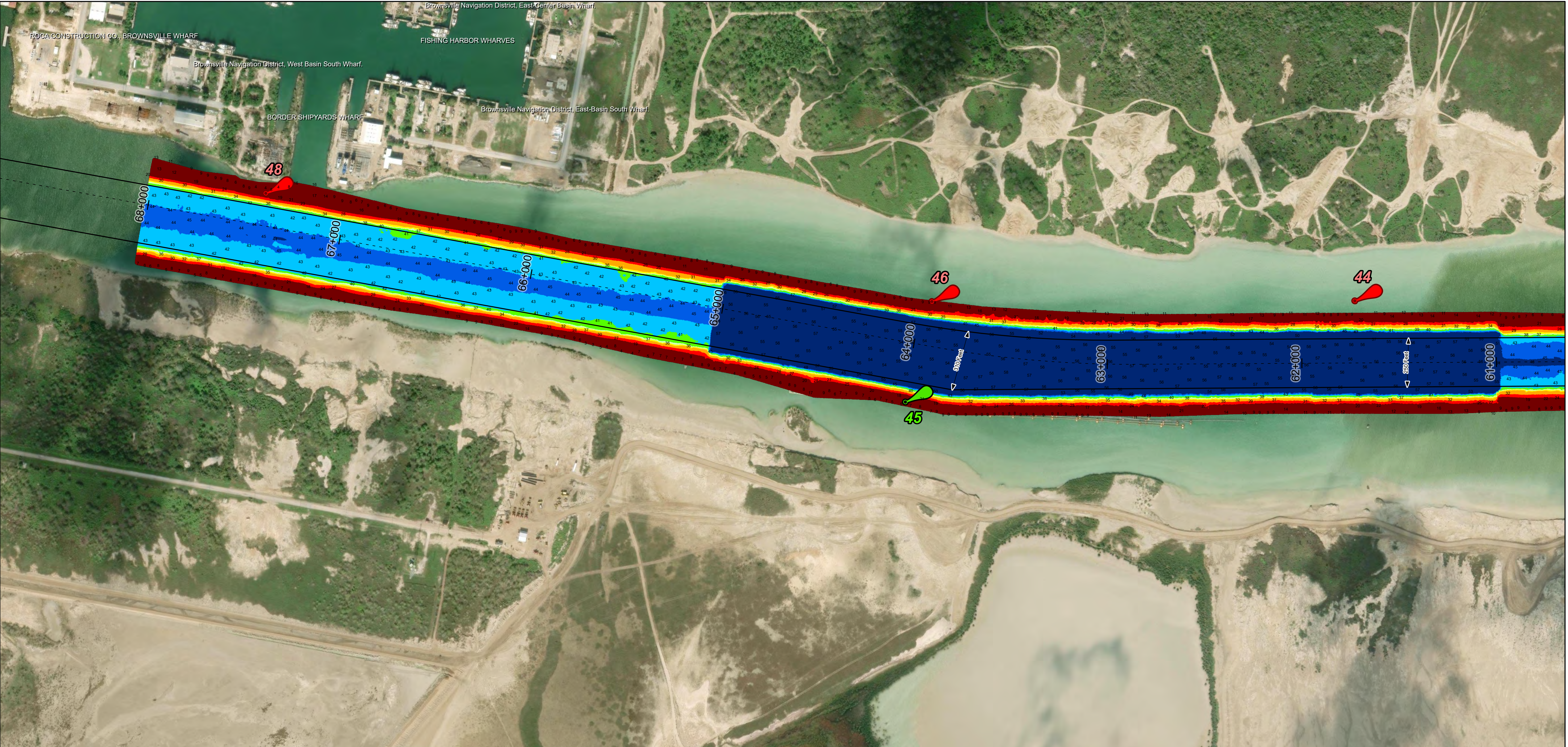
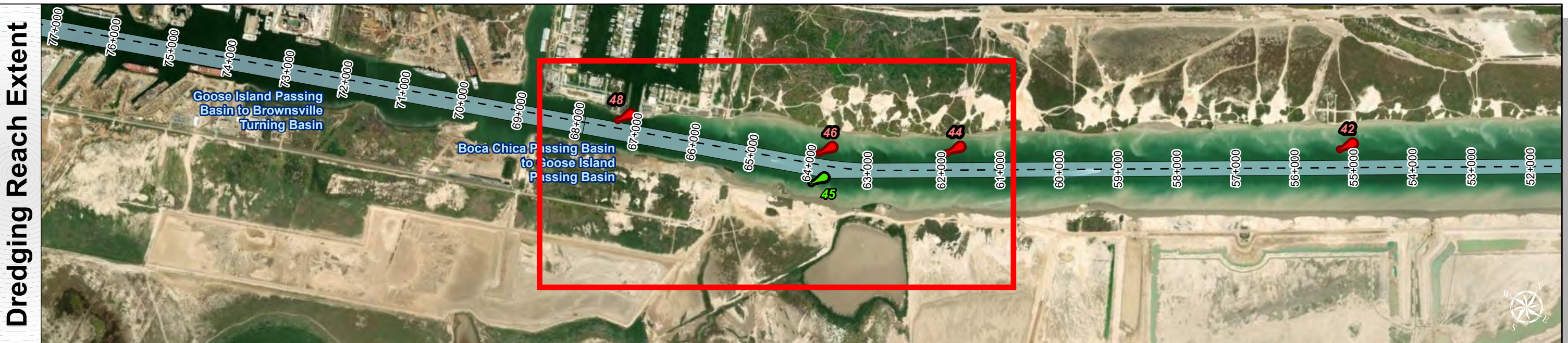
**HYDROGRAPHIC SURVEY**  
U.S. ARMY ENGINEER DISTRICT  
CORPS OF ENGINEERS  
GALVESTON, TEXAS

**Station: 40+000 to 68+000**  
**BRAZOS ISLAND HARBOR**  
Boca Chica Passing Basin to Goose Island Passing Basin

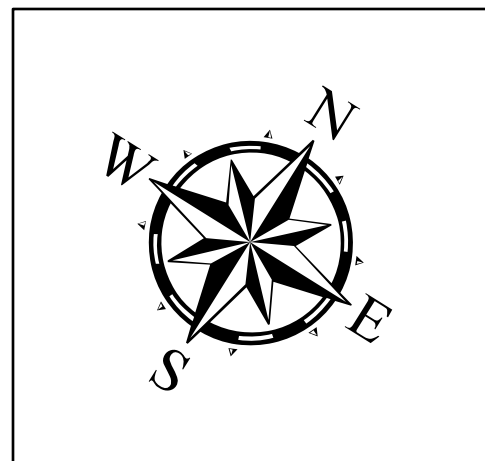
# Brazos Island Harbor: Boca Chica Passing Basin to Goose Island Passing Basin



U.S. Army Corps of Engineers  
Galveston District



Latest Survey Collection Date: 11 April 2025	Authorized Depth: -42ft.
Document Page: 4 of 4	Width Range: 250ft to 300ft
Scale: 1:3,000	Side Slope Ratio: 1:2.5 (Rise : Run)
Mapped by: m3odnmhg	PDF Print Date: 4/25/2025
Additional Imagery info:	



**Channel Features**

- Channel Center Line
- Channel Toe
- Channel Dimensions

**Aids to Navigation**

- Green Side Aids
- Red Side Aids
- Lights

**MLLW**

0 - 25	25 - 30	30 - 35	35 - 37	37 - 39	39 - 42	42 - 44	44 - 46	< 46
--------	---------	---------	---------	---------	---------	---------	---------	------

**NOTES:**

- Horizontal coordinates are referenced to Texas State Plane Coordinate System, South Zone NAD83 US Survey Feet.
- Elevations are referenced to Mean Lower Low Water (MLLW) datum.
- This project was designed by the Galveston District of the U.S. Army Corps of Engineers. The initials and signatures and registration designations of individuals appear on these project documents within the scope of their employment as required by er1110.1-8132.
- The information depicted on this survey map represents the results of surveys made on the dates indicated and can only be considered as indicating the general conditions existing at that time. These conditions are subject to rapid change due to shoaling events. A prudent mariner should not rely exclusively on the information provided here. Required by 33 CFR 209.325
- For the most up to date information please check our website at: <http://www.svg.usace.army.mil/Missions/Navigation/HydrographicSurveys/>

Service Layer Credits: World Topographic Map: Texas Parks & Wildlife, Esri, HERE, Garmin, INCREMENT P, USGS, METINASA, NGA, EPA, USA, World Imagery Source: Esri, Maxar, Earthstar Geographics, and the GIS User Community  
World Ocean Base: Esri, GEBCO, Garmin, NaturalView

**Additional Combined Survey Dates and Stationing:**  
Combined surveys: 20250320\_CS; 20250411\_AD\_03\_49P000\_53P200.

**Dredging Reach Extent**

**Hydrographic Survey Extent**

Coordinate System: NAD 1983 StatePlane Texas South FIPS 4205 Feet  
Projection: Lambert Conformal Conic

**HYDROGRAPHIC SURVEY**  
U.S. ARMY ENGINEER DISTRICT  
CORPS OF ENGINEERS  
GALVESTON, TEXAS

**Station: 40+000 to 68+000**  
**BRAZOS ISLAND HARBOR**  
Boca Chica Passing Basin to Goose Island Passing Basin