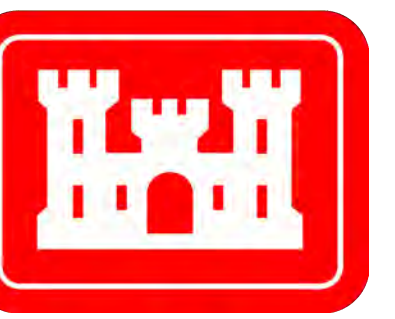
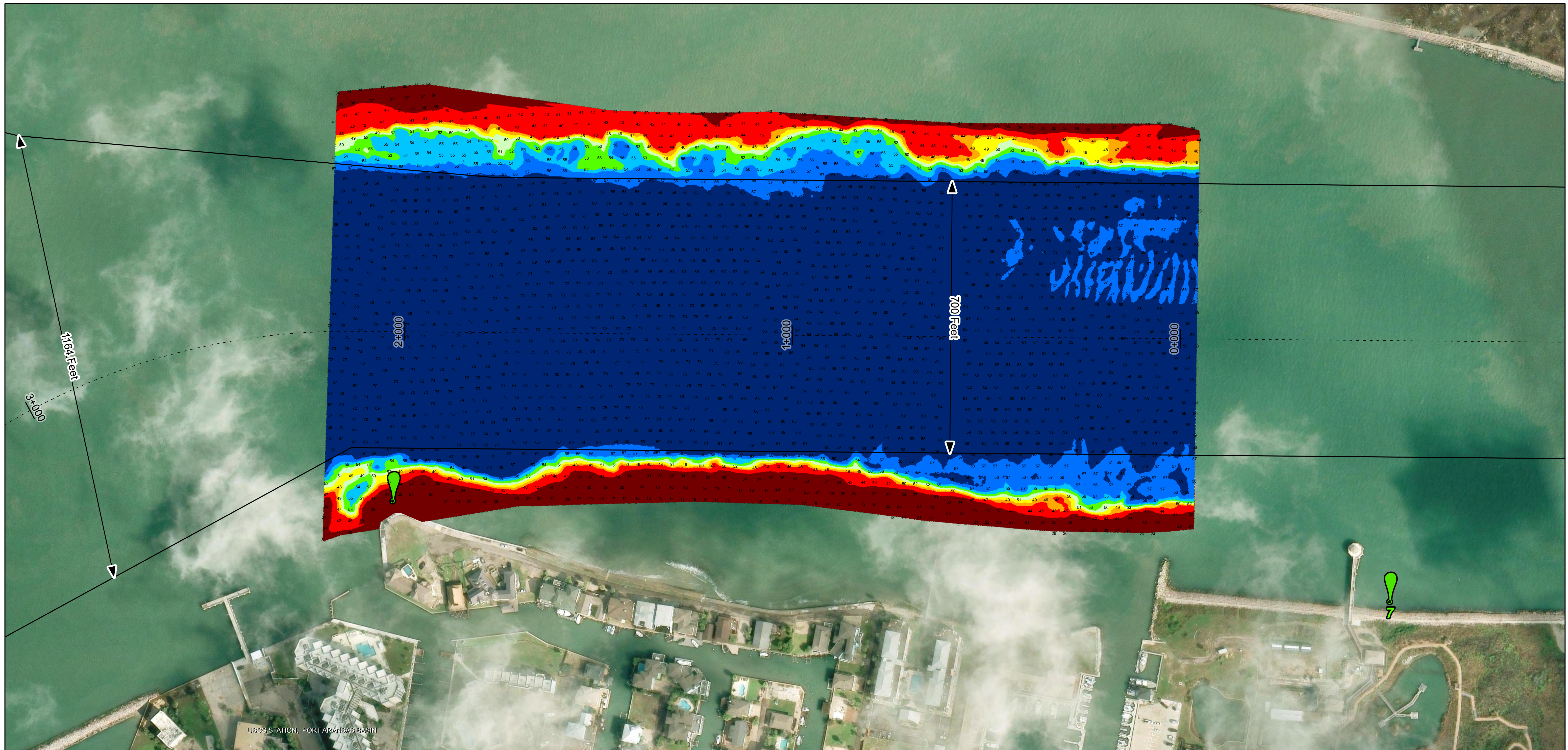
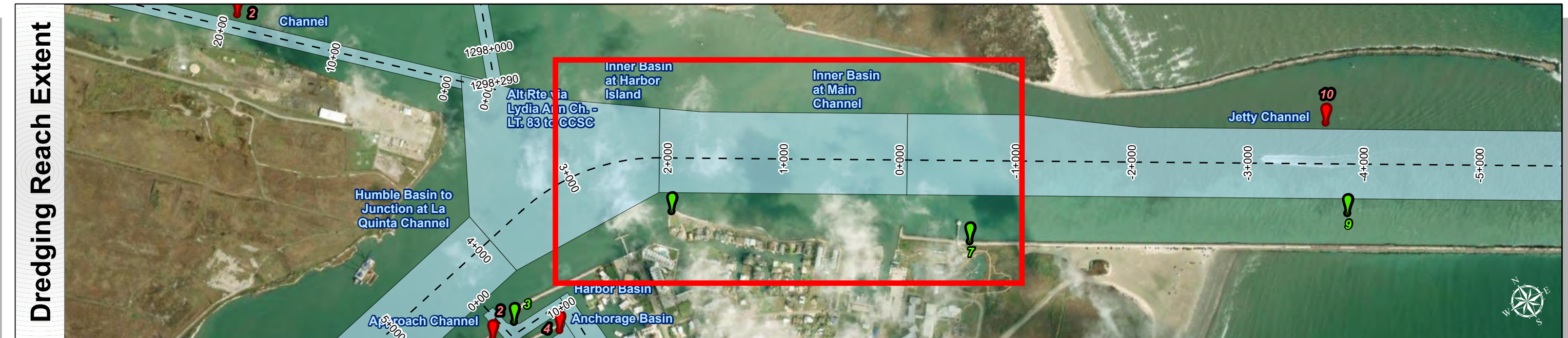


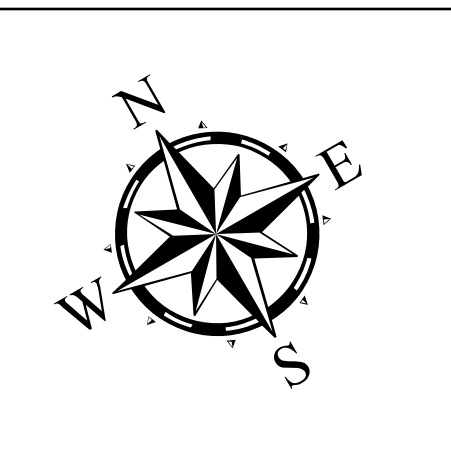
Corpus Christi Ship Channels: Inner Basin at Main Channel



U.S. Army Corps of Engineers
Galveston District



| | |
|------------------------------------|--|
| Authorized Depth: -54ft. | Latest Survey Collection Date: 24 March 2025 |
| Side Slope Ratio: 1:3 (Rise : Run) | Document Page: 1 of 1 |
| PDF Print Date: 3/26/2025 | Website Index Number: 6 |
| | Scale: 1:1,500 |
| | Mapped by: M3AOXPAC |
| | Additional Imagery info: |



Channel Features

- Channel Center Line
- Channel Toe
- Channel Dimensions

Aids to Navigation

- Green Side Aids
- Red Side Aids
- Lights

MLLW

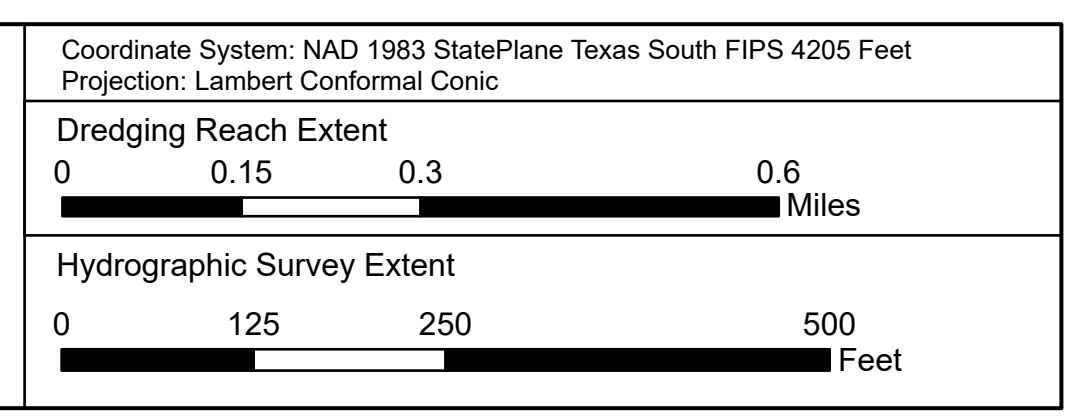
| |
|---------|
| < 40 |
| 40 - 46 |
| 46 - 48 |
| 48 - 50 |
| 50 - 52 |
| 52 - 54 |
| 54 - 56 |
| 56 - 58 |
| > 58 |

NOTES:

1. Horizontal coordinates are referenced to Texas State Plane Coordinate System, South Zone NAD83 US Survey Feet.
2. Elevations are referenced to Mean Lower Low Water (MLLW) datum.
3. This project was designed by the Galveston District of the U.S. Army Corps of Engineers. The initials and signatures and registration designations of individuals appear on these project documents within the scope of their employment as required by er1110.4-132.
4. The information depicted on this survey map represents the results of surveys made on the dates indicated and can only be considered as indicating the general conditions existing at that time. These conditions are subject to rapid change due to shoaling events. A prudent mariner should not rely exclusively on the information provided here. Required by 33 CFR 209.325
5. For the most up to date information please check our website at: <http://www.svg.usace.army.mil/Missions/Navigation/HydrographicSurveys/>

Service Layer Credits: World Topographic Map: Texas Parks & Wildlife, Esri, HERE, Garmin, INCREMENT P, USGS, METINASA, EPA, USDA
World Imagery: Maxar, Microsoft
World Imagery: Maxar
World Ocean Base: Esri, GEBCO, Garmin, NaturalVue

Additional Combined Survey Dates and Stationing:
COMB_SURV_INFO_HERE



HYDROGRAPHIC SURVEY
U.S. ARMY ENGINEER DISTRICT
CORPUS CHRISTI
GALVESTON, TEXAS

Station: 0+000 to 2+136.61
Inner Basin at Main Channel