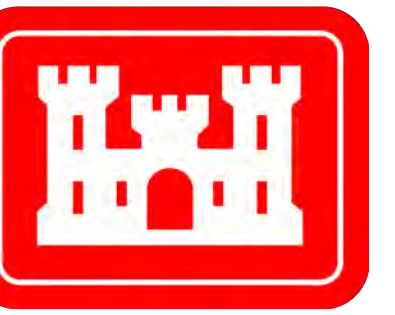
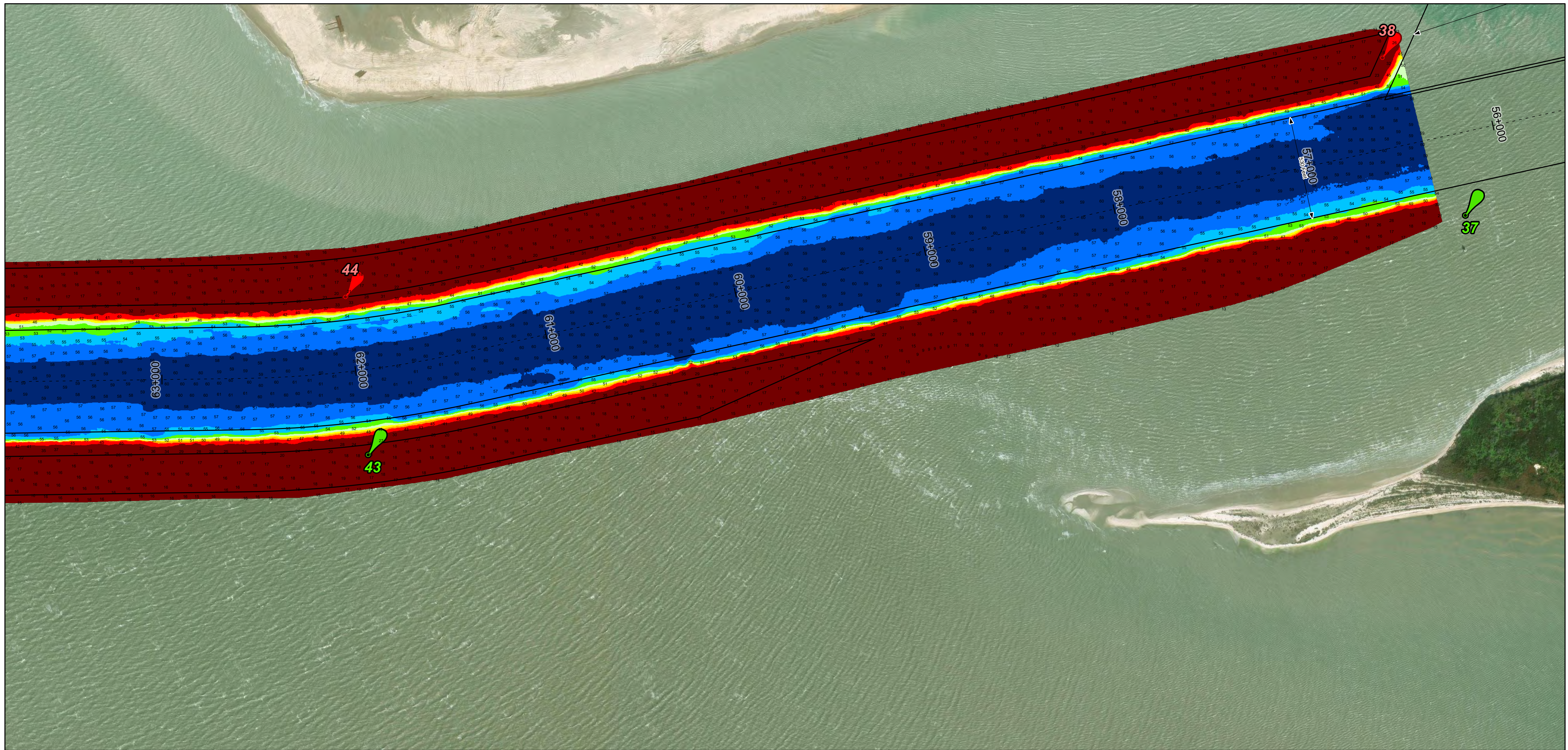
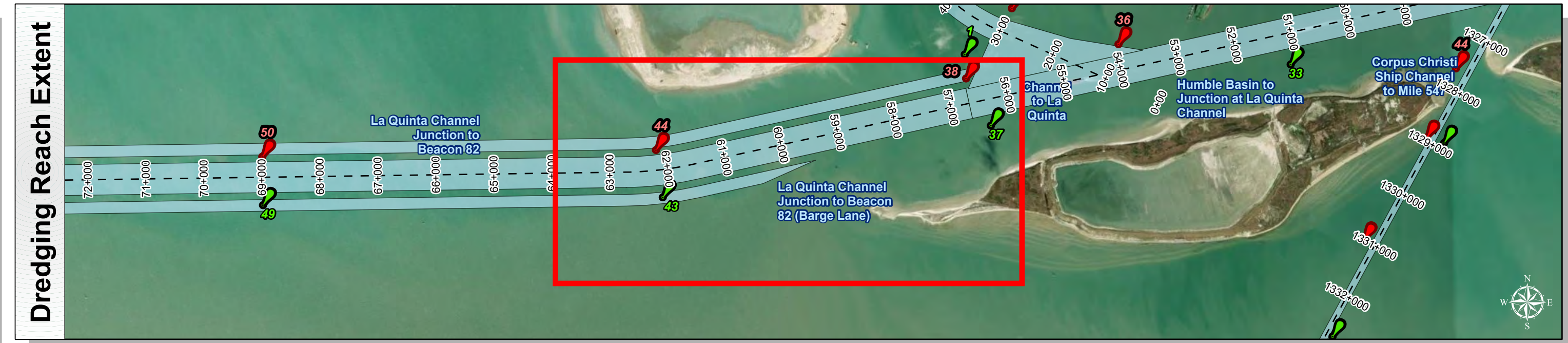
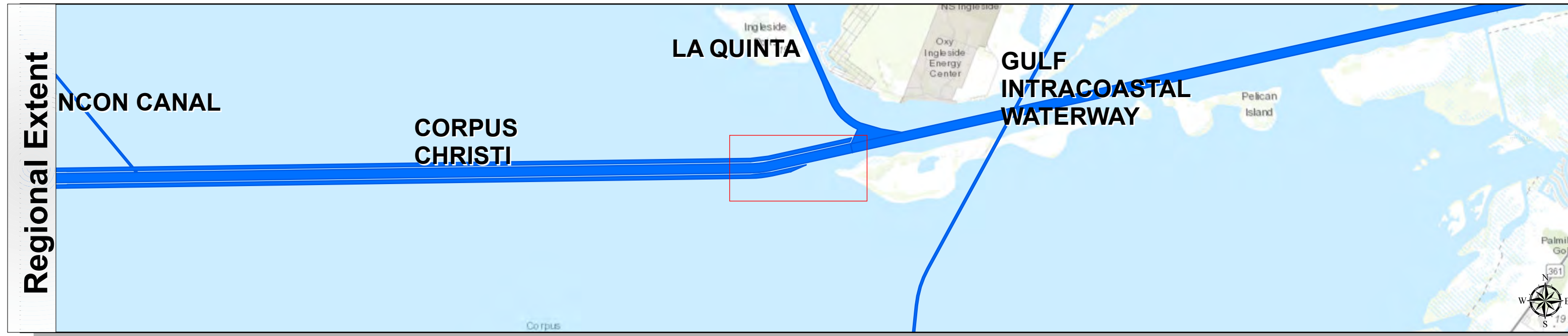


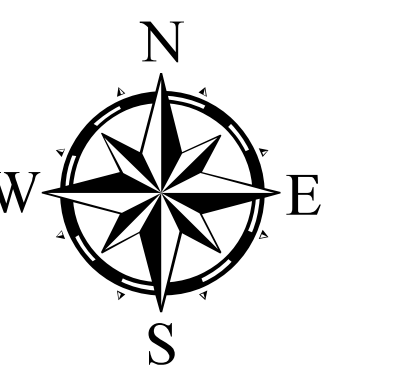
Corpus Christi Ship Channels: La Quinta Channel Junction to Beacon 82



U.S. Army Corps of Engineers
Galveston District



Latest Survey Collection Date: 21 March 2025	Authorized Depth: -54ft.
Document Page: 1 of 7	Width Range: 530ft to 530ft
Scale: 1:3,000	Side Slope Ratio: 1:3 (Rise : Run)
Mapped by: m3odnmhg	PDF Print Date: 4/16/2025
Additional Imagery info:	
Website Index Number: 15	



Channel Features

- Channel Center Line
- Channel Toe
- Channel Dimensions

Aids to Navigation

- Green Side Aids
- Red Side Aids
- Lights

MLLW

< 40	40 - 46	46 - 48	48 - 50	50 - 52	52 - 54	54 - 56	56 - 58	> 58
------	---------	---------	---------	---------	---------	---------	---------	------

NOTES:

- Horizontal coordinates are referenced to Texas State Plane Coordinate System, South Zone NAD83 US Survey Feet.
- Elevations are referenced to Mean Lower Low Water (MLLW) datum.
- This project was designed by the Galveston District of the U.S. Army Corps of Engineers. The initials and signatures and registration designations of individuals appear on these project documents within the scope of their employment as required by 47CFR 117.1-18132.
- The information depicted on this survey map represents the results of surveys made on the dates indicated and can only be considered as indicating the general conditions existing at that time. These conditions are subject to rapid change due to shoaling events. A prudent mariner should not rely exclusively on the information provided here. Required by 33 CFR 209.225
- For the most up to date information please check our website at: <http://www.svg.usace.army.mil/Missions/Navigation/HydrographicSurveys/>

Service Layer Credits: World Topographic Map: Texas Parks & Wildlife, Esri, HERE, Garmin, INCREMENT P, USGS, METINASA, NGA, EPA, USDA
World Imagery: Source: Esri, Maxar, Earthstar Geographics, and the GIS User Community
World Ocean Base: Esri, GEBCO, Garmin, NaturalView

Additional Combined Survey Dates and Stationing:
COMB_SURV_INFO_HERE

Coordinate System: NAD 1983 StatePlane Texas South FIPS 4205 Feet
Projection: Lambert Conformal Conic

Dredging Reach Extent

0 0.3 0.6 1.2 Miles

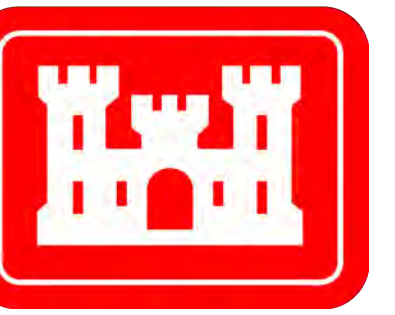
Hydrographic Survey Extent

0 255 510 1,020 Feet

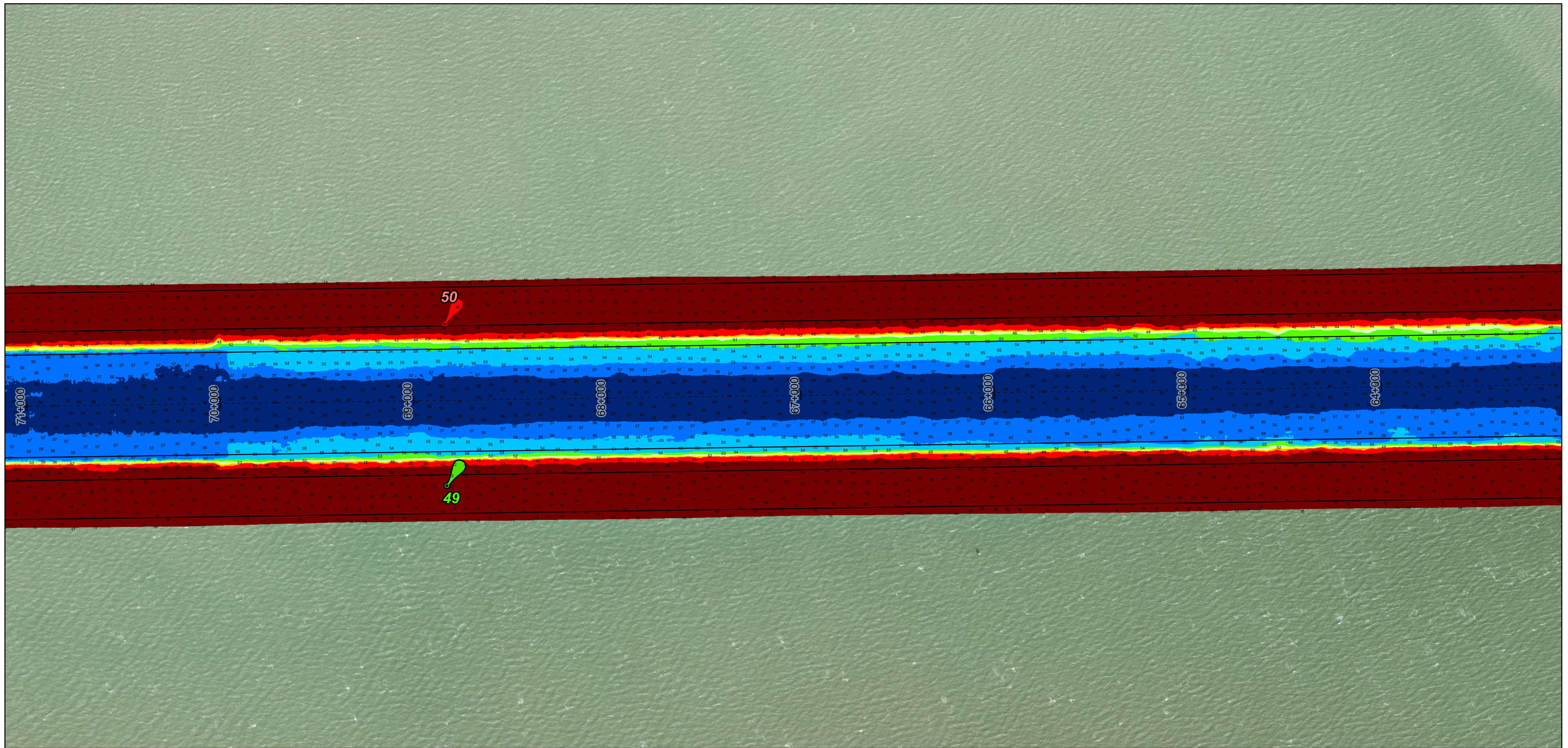
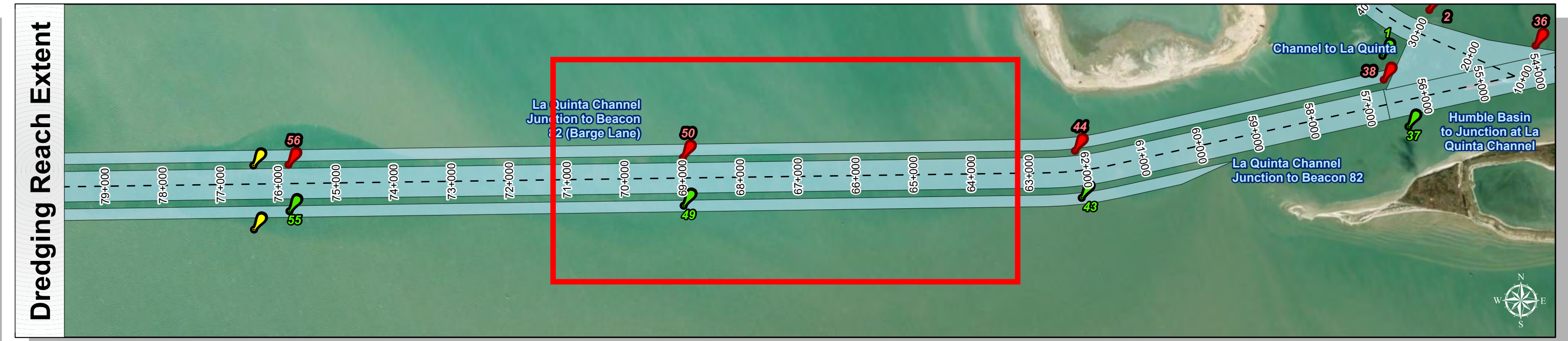
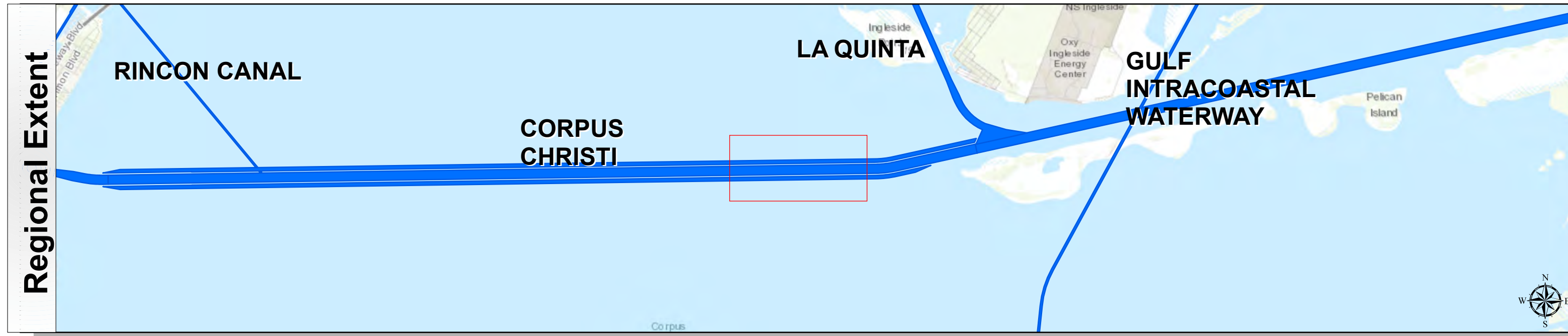
HYDROGRAPHIC SURVEY
U.S. ARMY ENGINEER DISTRICT
CORPS OF ENGINEERS
GALVESTON, TEXAS

Station: 56+553.10 to 107+500
CORPUS CHRISTI
La Quinta Channel Junction to Beacon 82

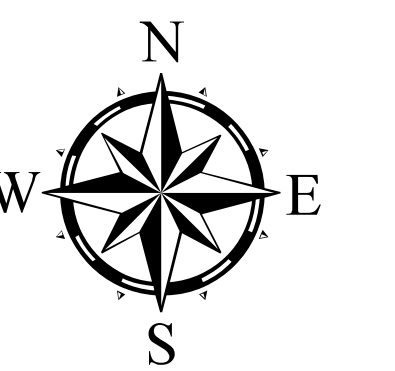
Corpus Christi Ship Channels: La Quinta Channel Junction to Beacon 82



U.S. Army Corps of Engineers
Galveston District



Latest Survey Collection Date: 21 March 2025	Authorized Depth: -54ft.
Document Page: 2 of 7	Width Range: 530ft to 530ft
Scale: 1:3,000	Side Slope Ratio: 1:3 (Rise : Run)
Mapped by: m3odnmhg	PDF Print Date: 4/16/2025
Additional Imagery info:	
Website Index Number: 16	



Channel Features	Aids to Navigation	MLLW
<ul style="list-style-type: none"> --- Channel Center Line — Channel Toe ↔ Channel Dimensions 	<ul style="list-style-type: none"> Green Side Aids Red Side Aids Lights 	<ul style="list-style-type: none"> < -40 40 - 46 46 - 48 48 - 50 50 - 52 52 - 54 54 - 56 56 - 58 > 58

NOTES:
 1. Horizontal coordinates are referenced to Texas State Plane Coordinate System, South Zone NAD83 US Survey Feet.
 2. Elevations are referenced to Mean Lower Low Water (MLLW) datum.
 3. This project was designed by the Galveston District of the U.S. Army Corps of Engineers. The initials and signatures and registration designations of individuals appear on these project documents within the scope of their employment as required by er1110-1-8132.
 4. The information depicted on this survey map represents the results of surveys made on the dates indicated and can only be considered as indicating the general conditions existing at that time. These conditions are subject to rapid change due to shoaling events. A prudent mariner should not rely exclusively on the information provided here. Required by 33 CFR 209.325
 5. For the most up to date information please check our website at: <http://www.svg.usace.army.mil/Missions/Navigation/HydrographicSurveys/>
 Service Layer Credits: World Topographic Map: Texas Parks & Wildlife, Esri, HERE, Garmin, INCREMENT P, USGS, METINASA, NGA, EPA, USDA
 World Imagery: Source: Esri, Maxar, Earthstar Geographics, and the GIS User Community
 World Ocean Base: Esri, GEBCO, Garmin, NaturalVue

Additional Combined Survey Dates and Stationing:
 COMB_SURV_INFO_HERE

Coordinate System: NAD 1983 StatePlane Texas South FIPS 4205 Feet
 Projection: Lambert Conformal Conic

Dredging Reach Extent
 0 0.3 0.6 1.2 Miles

Hydrographic Survey Extent
 0 255 510 1,020 Feet

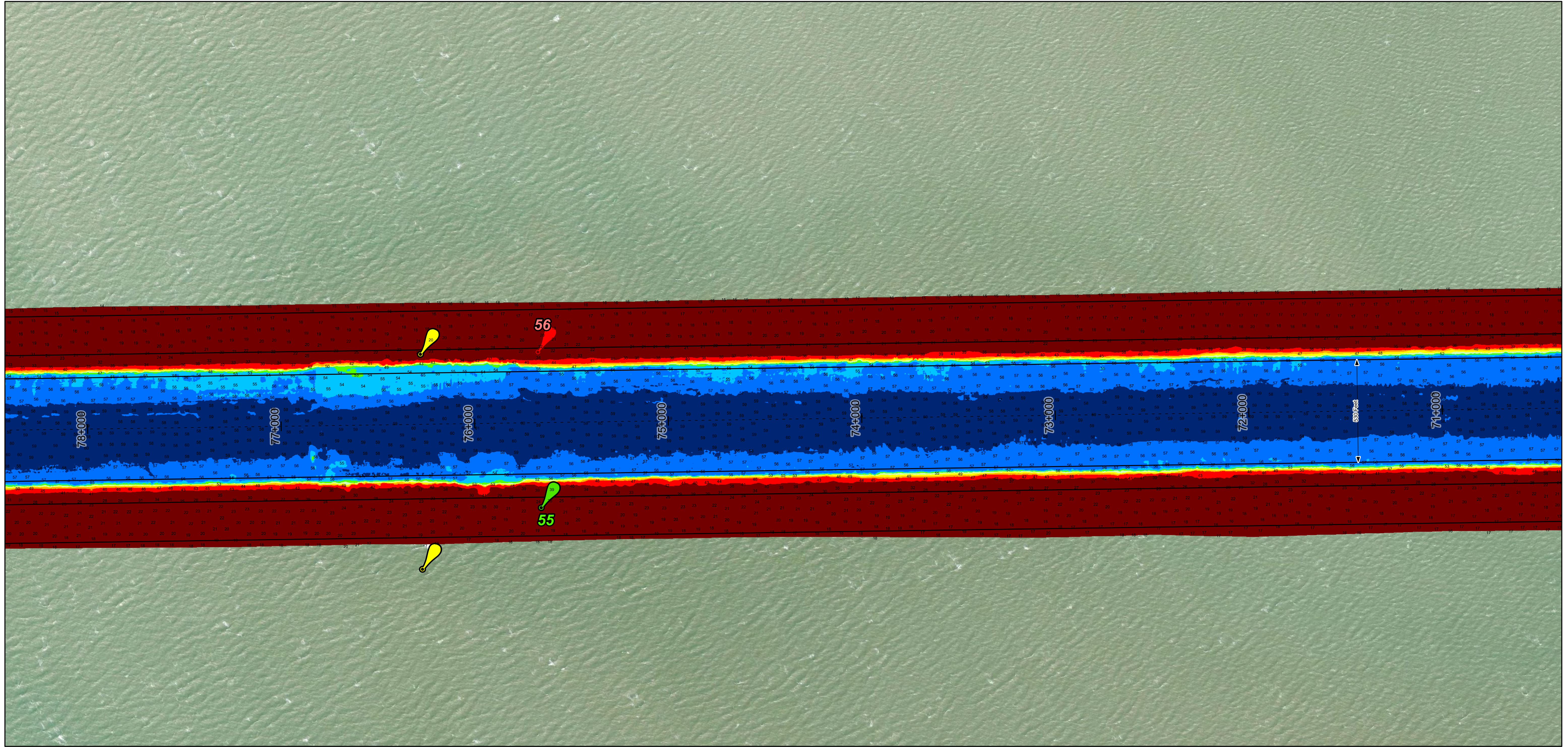
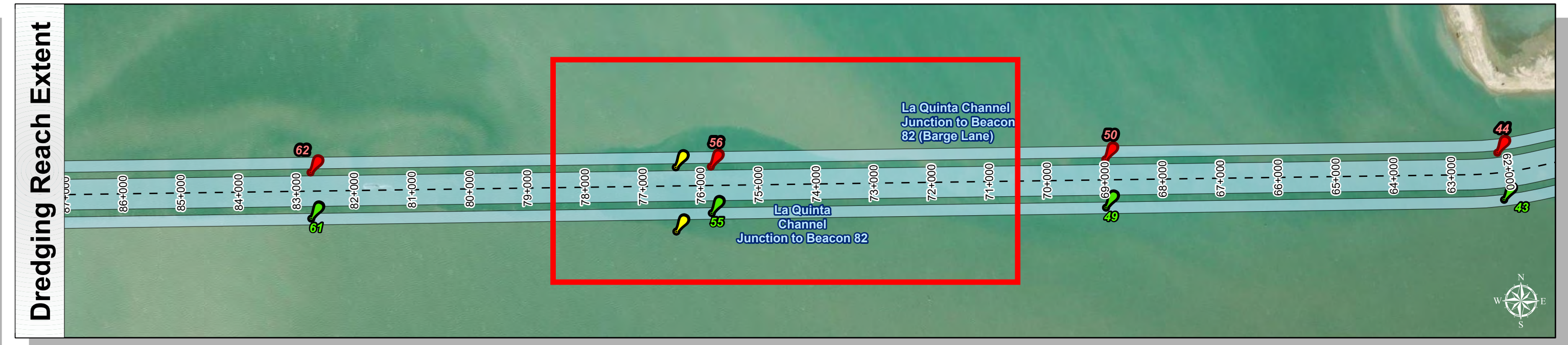
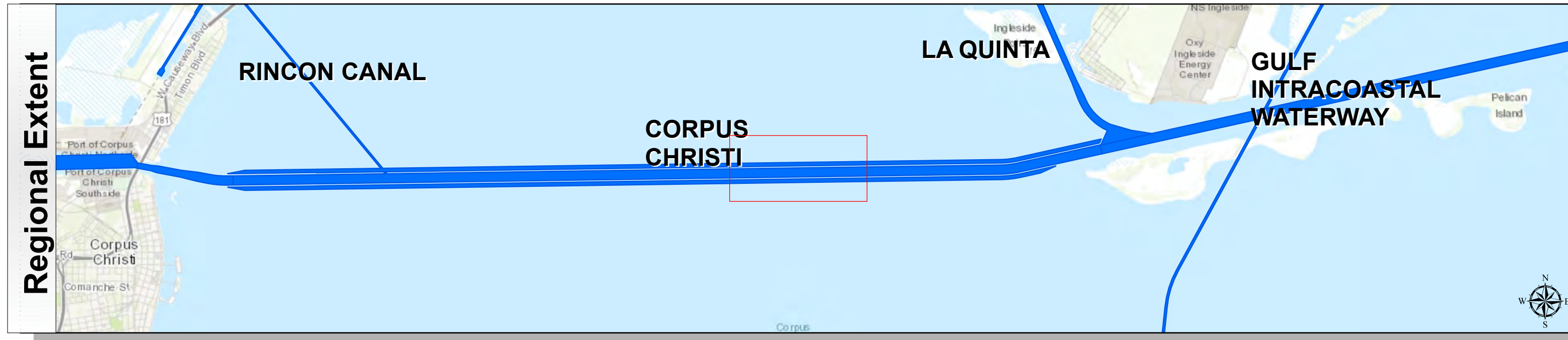
HYDROGRAPHIC SURVEY
 U.S. ARMY ENGINEER DISTRICT
 CORPS OF ENGINEERS
 GALVESTON, TEXAS

Station: 56+553.10 to 107+500
CORPUS CHRISTI
 La Quinta Channel Junction to Beacon 82

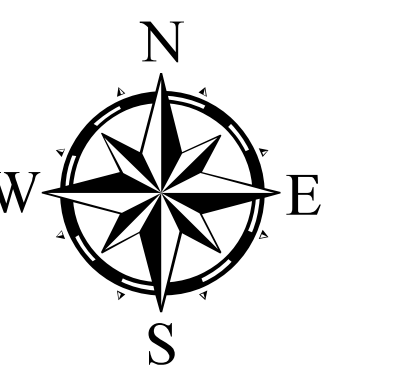
Corpus Christi Ship Channels: La Quinta Channel Junction to Beacon 82



U.S. Army Corps of Engineers
Galveston District



Latest Survey Collection Date: 21 March 2025	Authorized Depth: -54ft.
Document Page: 3 of 7	Width Range: 530ft to 530ft
Scale: 1:3,000	Side Slope Ratio: 1:3 (Rise : Run)
Mapped by: m3odnmhg	PDF Print Date: 4/16/2025
Additional Imagery info:	
Website Index Number: 17	



Channel Features

- Channel Center Line
- Channel Toe
- ↔ Channel Dimensions

Aids to Navigation

- Green Side Aids
- Red Side Aids
- Lights

Depth Legend (MLLW)

< 40
40 - 46
46 - 48
48 - 50
50 - 52
52 - 54
54 - 56
56 - 58
> 58

NOTES:

- Horizontal coordinates are referenced to Texas State Plane Coordinate System, South Zone NAD83 US Survey Feet.
- Elevations are referenced to Mean Lower Low Water (MLLW) datum.
- This project was designed by the Galveston District of the U.S. Army Corps of Engineers. The initials and signatures and registration designations of individuals appear on these project documents within the scope of their employment as required by er1110-8132.
- The information depicted on this survey map represents the results of surveys made on the dates indicated and can only be considered as indicating the general conditions existing at that time. These conditions are subject to rapid change due to shoaling events. A prudent mariner should not rely exclusively on the information provided here. Required by 33 CFR 209.225
- For the most up to date information please check our website at: <http://www.svg.usace.army.mil/Missions/Navigation/HydrographicSurveys/>

Service Layer Credits: World Topographic Map: Texas Parks & Wildlife, Esri, HERE, Garmin, INCREMENT P, USGS, METINASA, NGA, EPA, USDA
World Imagery Source: Esri, Maxar, Earthstar Geographics, and the GIS User Community
World Ocean Base: Esri, GEBCO, Garmin, NaturalVie

Additional Combined Survey Dates and Stationing:
COMB_SURV_INFO_HERE

Dredging Reach Extent

0 0.3 0.6 1.2 Miles

Hydrographic Survey Extent

0 255 510 1,020 Feet

Coordinate System: NAD 1983 StatePlane Texas South FIPS 4205 Feet
Projection: Lambert Conformal Conic

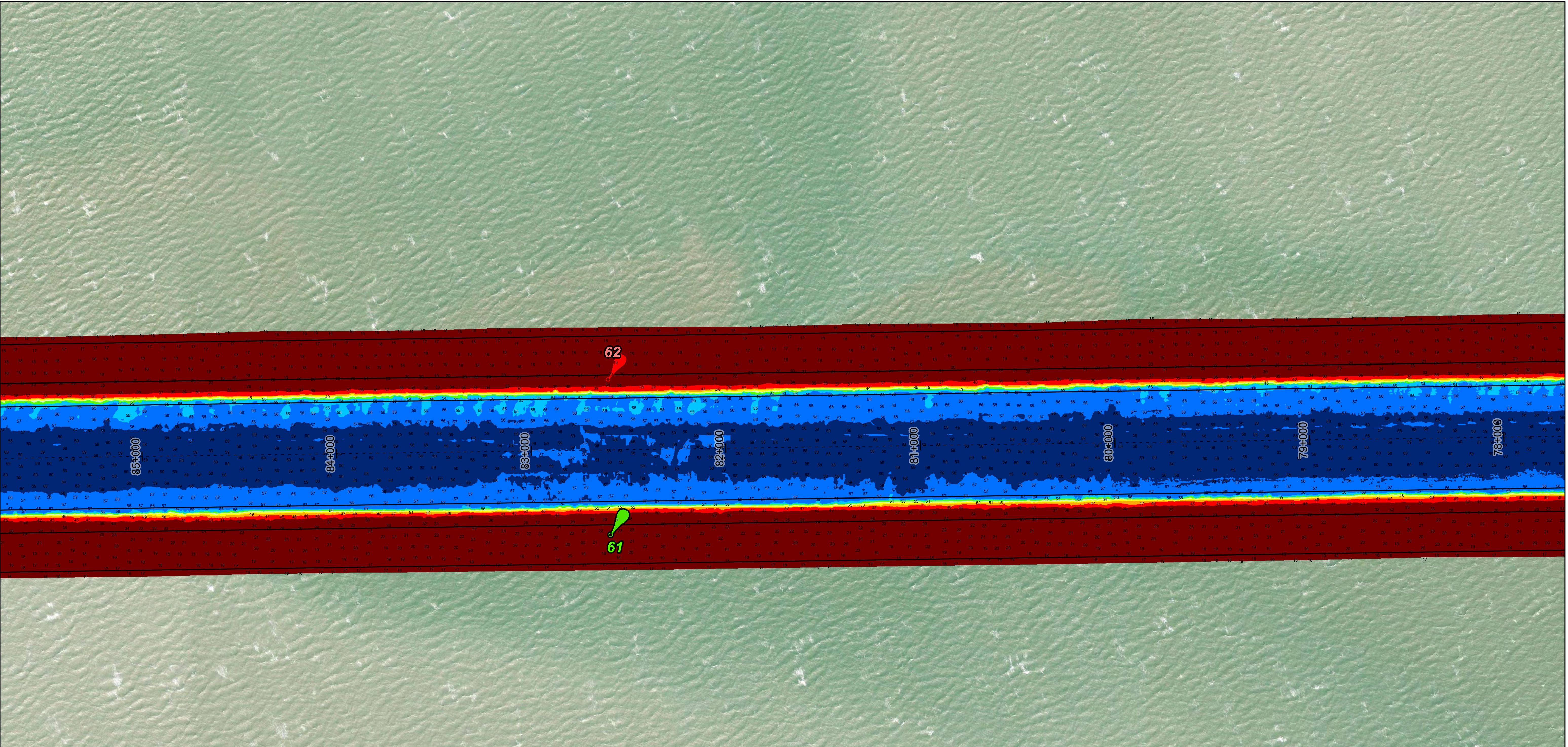
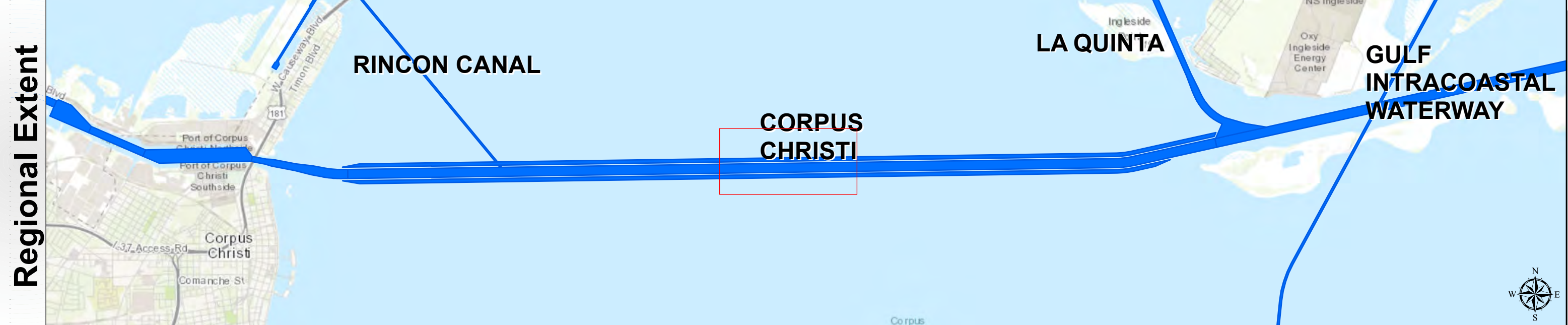
HYDROGRAPHIC SURVEY
U.S. ARMY ENGINEER DISTRICT
CORPS OF ENGINEERS
GALVESTON, TEXAS

Station: 56+553.10 to 107+500
CORPUS CHRISTI
La Quinta Channel Junction to Beacon 82

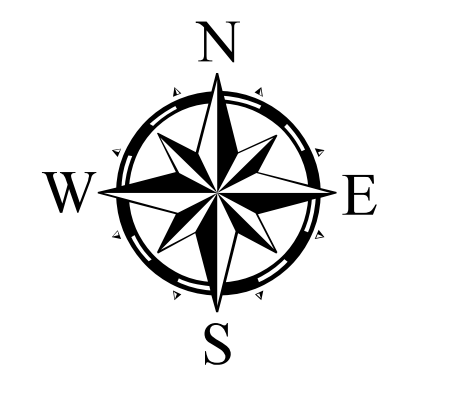
Corpus Christi Ship Channels: La Quinta Channel Junction to Beacon 82



U.S. Army Corps of Engineers
Galveston District



Latest Survey Collection Date: 21 March 2025	Authorized Depth: -54ft.
Document Page: 4 of 7	Width Range: 530ft to 530ft
Scale: 1:3,000	Side Slope Ratio: 1:3 (Rise : Run)
Mapped by: m3odnmhg	PDF Print Date: 4/16/2025
Additional Imagery info:	



Channel Features

- Channel Center Line
- Channel Toe
- ↔ Channel Dimensions

Aids to Navigation

- Green Side Aids
- Red Side Aids
- Lights

MLLW

< 40	40 - 46	46 - 48	48 - 50	50 - 52	52 - 54	54 - 56	56 - 58	> 58
Red	Orange	Yellow	Light Green	Green	Light Blue	Blue	Dark Blue	Black

NOTES:

- Horizontal coordinates are referenced to Texas State Plane Coordinate System, South Zone NAD83 US Survey Feet.
- Elevations are referenced to Mean Lower Low Water (MLLW) datum.
- This project was designed by the Galveston District of the U.S. Army Corps of Engineers. The initials and signatures of individuals appear on these project documents within the scope of their employment as required by er1110-1-8132.
- The information depicted on this survey map represents the results of surveys made on the dates indicated and can only be considered as indicating the general conditions existing at that time. These conditions are subject to rapid change due to shoaling events. A prudent mariner should not rely exclusively on the information provided here. Required by 33 CFR 209.225
- For the most up to date information please check our website at: <http://www.svg.usace.army.mil/Missions/Navigation/HydrographicSurveys/>

Service Layer Credits: World Topographic Map: Texas Parks & Wildlife, Esri, HERE, Garmin, INCREMENT P, USGS, METINASA, NGA, EPA, USDA
World Imagery: Source: Esri, Maxar, Earthstar Geographics, and the GIS User Community
World Ocean Base: Esri, GEBCO, Garmin, NaturalView

Additional Combined Survey Dates and Stationing:
COMB_SURV_INFO_HERE

Coordinate System: NAD 1983 StatePlane Texas South FIPS 4205 Feet
Projection: Lambert Conformal Conic

Dredging Reach Extent

0 0.3 0.6 1.2 Miles

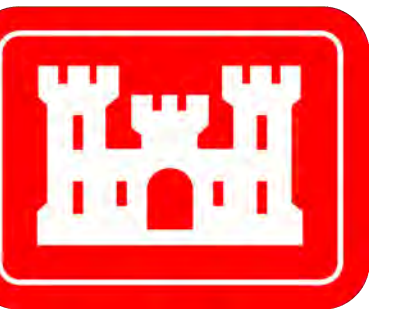
Hydrographic Survey Extent

0 255 510 1,020 Feet

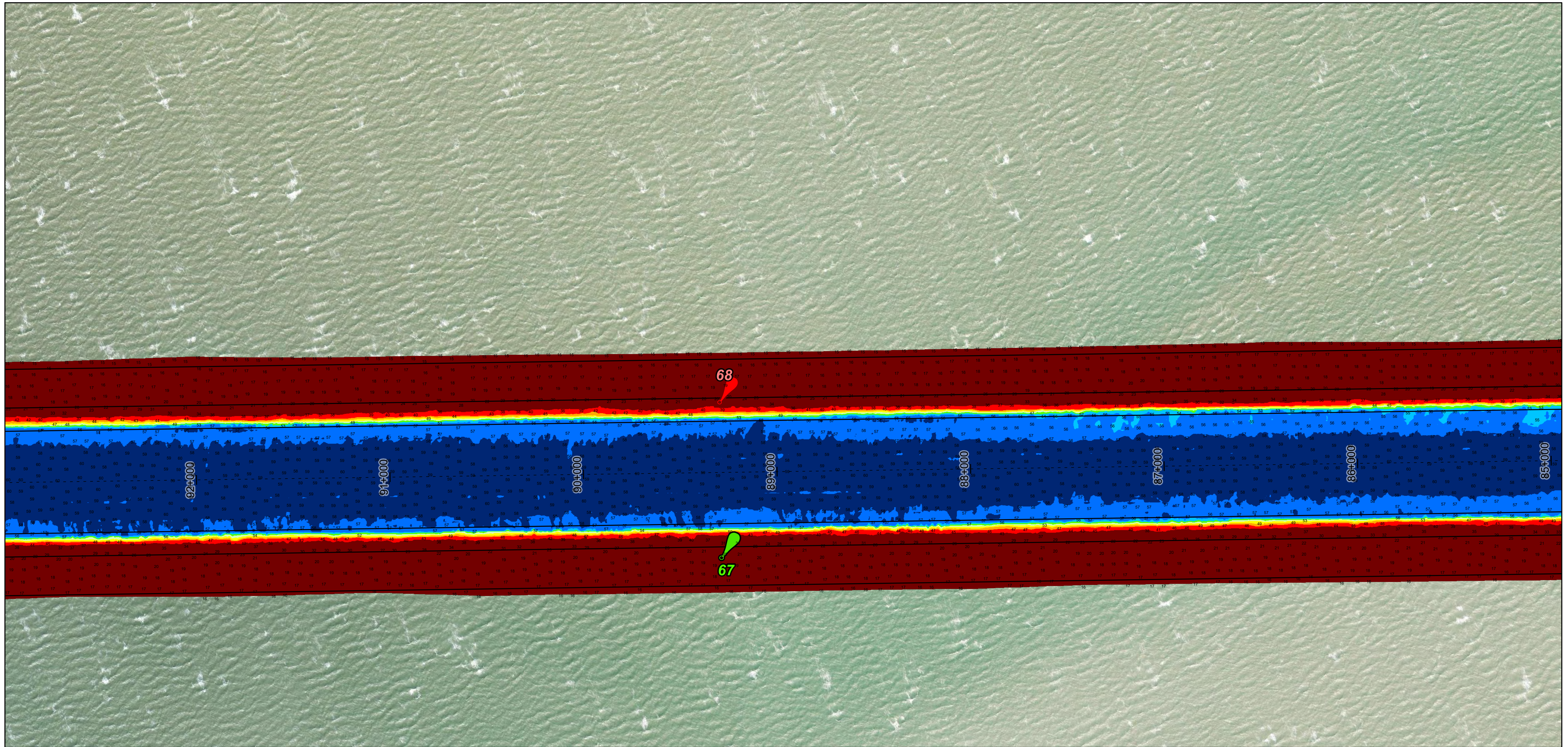
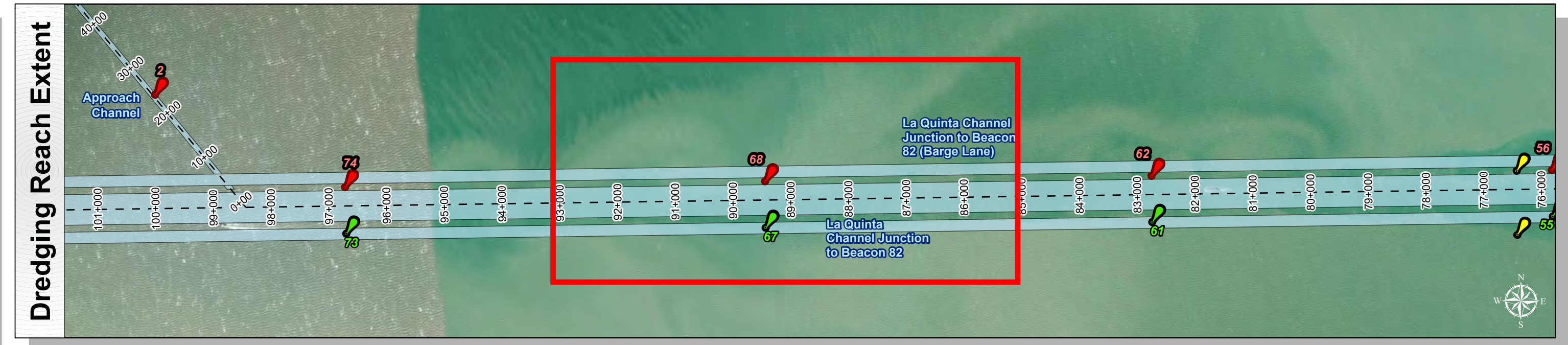
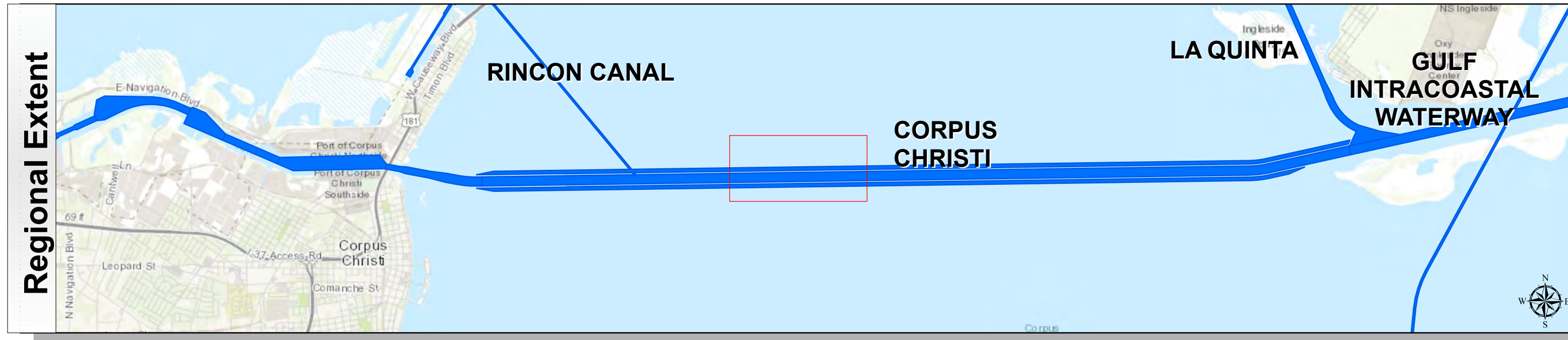
HYDROGRAPHIC SURVEY
U.S. ARMY ENGINEER DISTRICT
CORPS OF ENGINEERS
GALVESTON, TEXAS

Station: 56+553.10 to 107+500
CORPUS CHRISTI
La Quinta Channel Junction to Beacon 82

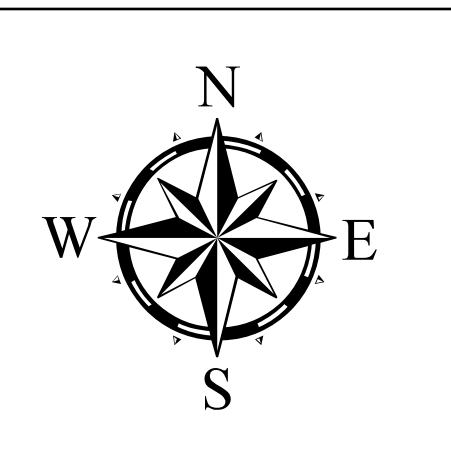
Corpus Christi Ship Channels: La Quinta Channel Junction to Beacon 82



U.S. Army Corps of Engineers
Galveston District



Latest Survey Collection Date: 21 March 2025	Authorized Depth: -54ft.
Document Page: 5 of 7	Width Range: 530ft to 530ft
Scale: 1:3,000	Side Slope Ratio: 1:3 (Rise : Run)
Mapped by: m3odnmhg	PDF Print Date: 4/16/2025
Additional Imagery info:	



Channel Features

- Channel Center Line
- Channel Toe
- ↔ Channel Dimensions

Aids to Navigation

- Green Side Aids
- Red Side Aids
- Lights

MLLW

< 40
40 - 46
46 - 48
48 - 50
50 - 52
52 - 54
54 - 56
56 - 58
> 58

NOTES:

- Horizontal coordinates are referenced to Texas State Plane Coordinate System, South Zone NAD83 US Survey Feet.
- Elevations are referenced to Mean Lower Low Water (MLLW) datum.
- This project was designed by the Galveston District of the U.S. Army Corps of Engineers. The initials and signatures and registration designations of individuals appear on these project documents within the scope of their employment as required by er1110-8132.
- The information depicted on this survey map represents the results of surveys made on the dates indicated and can only be considered as indicating the general conditions existing at that time. These conditions are subject to rapid change due to shoaling events. A prudent mariner should not rely exclusively on the information provided here. Required by 33 CFR 209.225
- For the most up to date information please check our website at: <http://www.svg.usace.army.mil/Missions/Navigation/HydrographicSurveys/>

Service Layer Credits: World Topographic Map: Texas Parks & Wildlife, Esri, HERE, Garmin, INCREMENT P, USGS, METINASA, NGA, EPA, USDA
World Imagery Source: Esri, Maxar, Earthstar Geographics, and the GIS User Community
World Ocean Base: Esri, GEBCO, Garmin, NaturalView

Additional Combined Survey Dates and Stationing:
COMB_SURV_INFO_HERE

Coordinate System: NAD 1983 StatePlane Texas South FIPS 4205 Feet
Projection: Lambert Conformal Conic

Dredging Reach Extent

0 0.3 0.6 1.2 Miles

Hydrographic Survey Extent

0 255 510 1,020 Feet

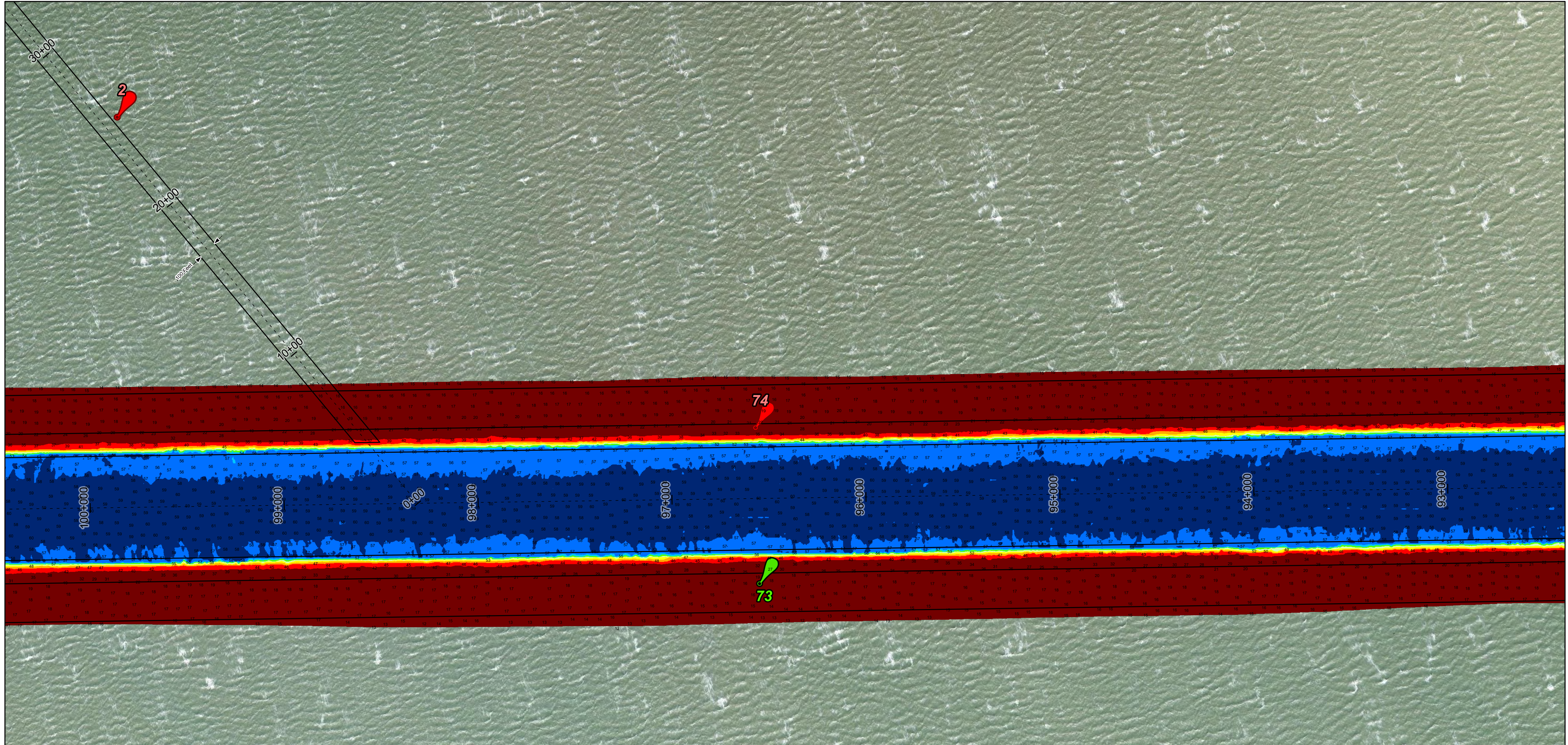
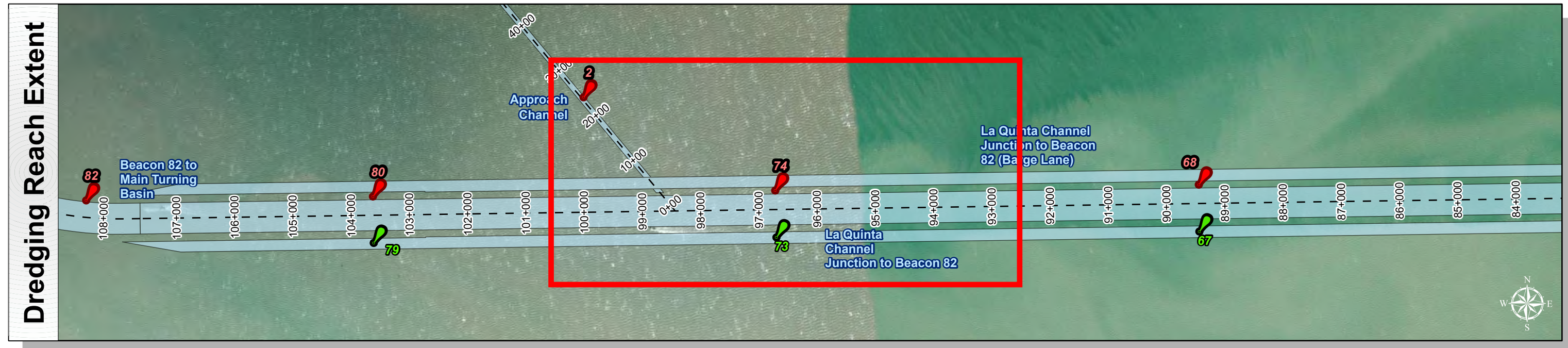
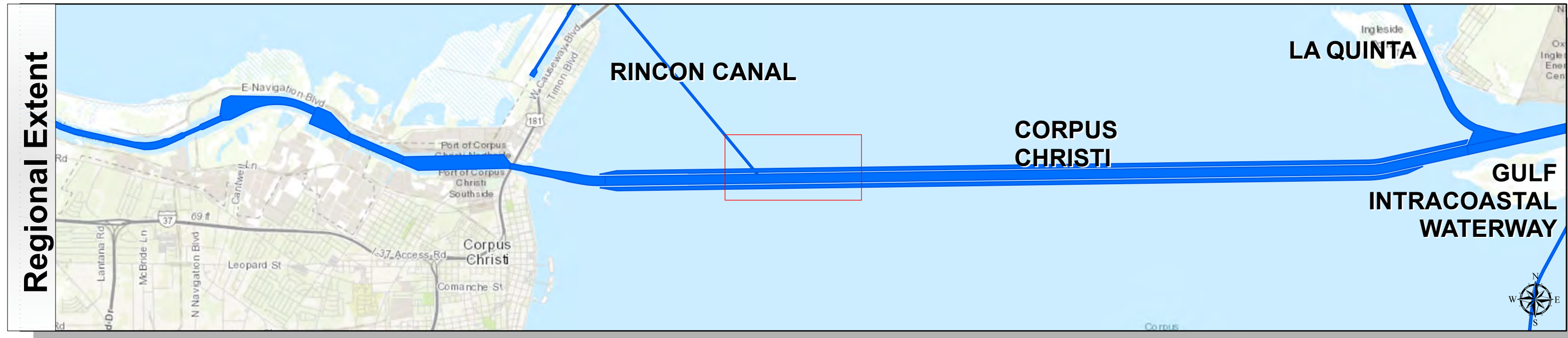
HYDROGRAPHIC SURVEY
U.S. ARMY ENGINEER DISTRICT
CORPS OF ENGINEERS
GALVESTON, TEXAS

Station: 56+553.10 to 107+500
CORPUS CHRISTI
La Quinta Channel Junction to Beacon 82

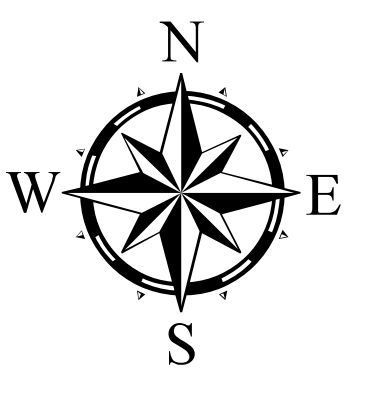
Corpus Christi Ship Channels: La Quinta Channel Junction to Beacon 82



U.S. Army Corps of Engineers
Galveston District



Latest Survey Collection Date: 21 March 2025	Authorized Depth: -54ft.
Document Page: 6 of 7	Width Range: 530ft to 530ft
Scale: 1:3,000	Side Slope Ratio: 1:3 (Rise : Run)
Mapped by: m3odnmhg	PDF Print Date: 4/16/2025
Additional Imagery info:	



Channel Features	Aids to Navigation	MLLW
<ul style="list-style-type: none"> Channel Center Line Channel Toe Channel Dimensions 	<ul style="list-style-type: none"> Green Side Aids Red Side Aids Lights 	<ul style="list-style-type: none"> < 40 40 - 46 46 - 48 48 - 50 50 - 52 52 - 54 54 - 56 56 - 59 > 59

NOTES:
 1. Horizontal coordinates are referenced to Texas State Plane Coordinate System, South Zone NAD83 US Survey Feet.
 2. Elevations are referenced to Mean Lower Low Water (MLLW) datum.
 3. This project was designed by the Galveston District of the U.S. Army Corps of Engineers. The initials and signatures and registration designations of individuals appear on these project documents within the scope of their employment as required by 47CFR 117.113-1, 117.113-2.
 4. The information depicted on this survey map represents the results of surveys made on the dates indicated and can only be considered as indicating the general conditions existing at that time. These conditions are subject to rapid change due to shoaling events. A prudent mariner should not rely exclusively on the information provided here. Required by 33 CFR 209.325.
 5. For the most up to date information please check our website at: <http://www.svg.usace.army.mil/Missions/Navigation/HydrographicSurveys/>
 Service Layer Credits: World Topographic Map: Texas Parks & Wildlife, Esri, HERE, Garmin, INCREMENT P, USGS, METINASA, NGA, EPA, USDA World Imagery Source: Esri, Maxar, Earthstar Geographics, and the GIS User Community World Ocean Base: Esri, GEBCO, Garmin, NaturalView

Additional Combined Survey Dates and Stationing:
 COMB_SURV_INFO_HERE

Coordinate System: NAD 1983 StatePlane Texas South FIPS 4205 Feet
 Projection: Lambert Conformal Conic

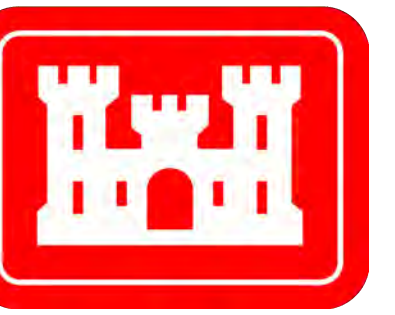
Dredging Reach Extent
 0 0.3 0.6 1.2 Miles

Hydrographic Survey Extent
 0 255 510 1,020 Feet

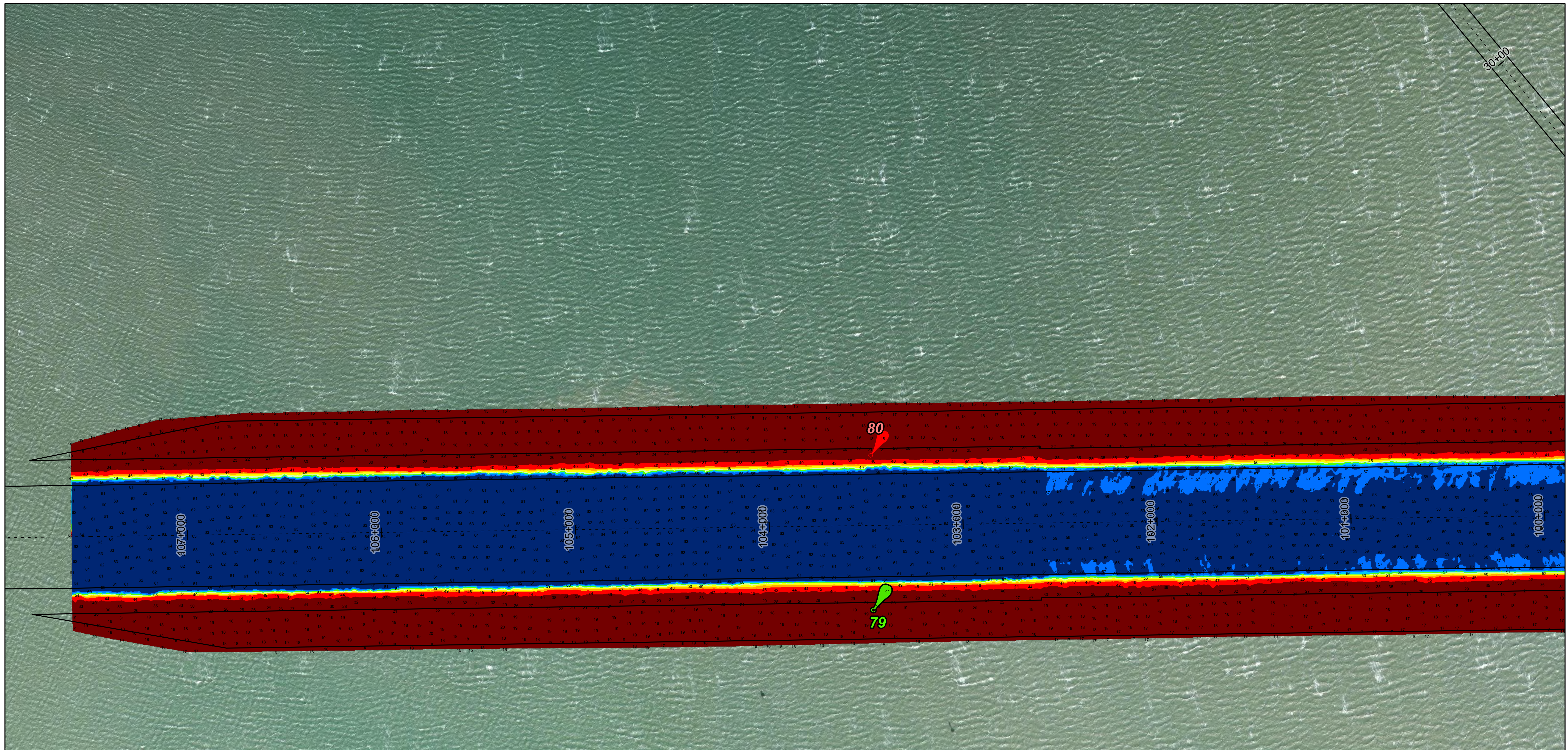
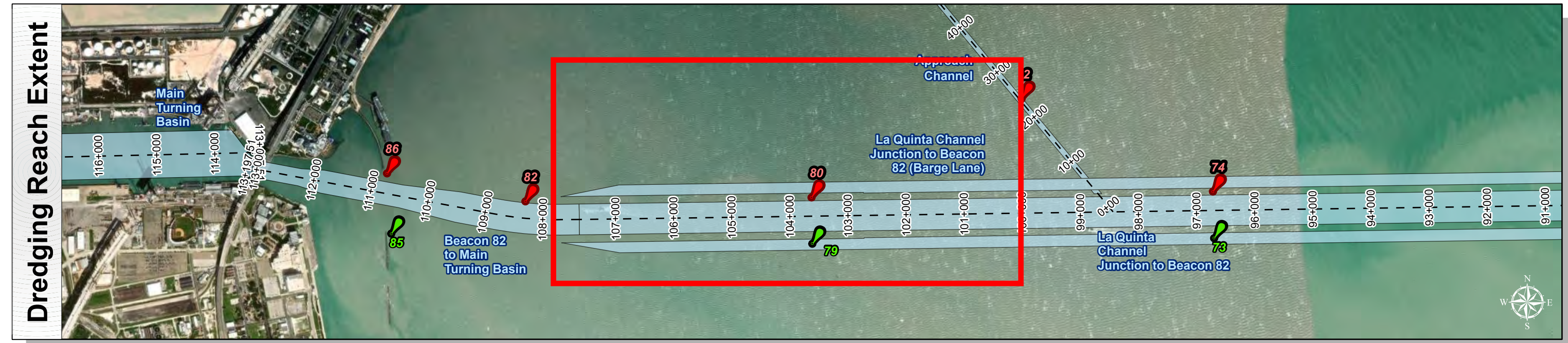
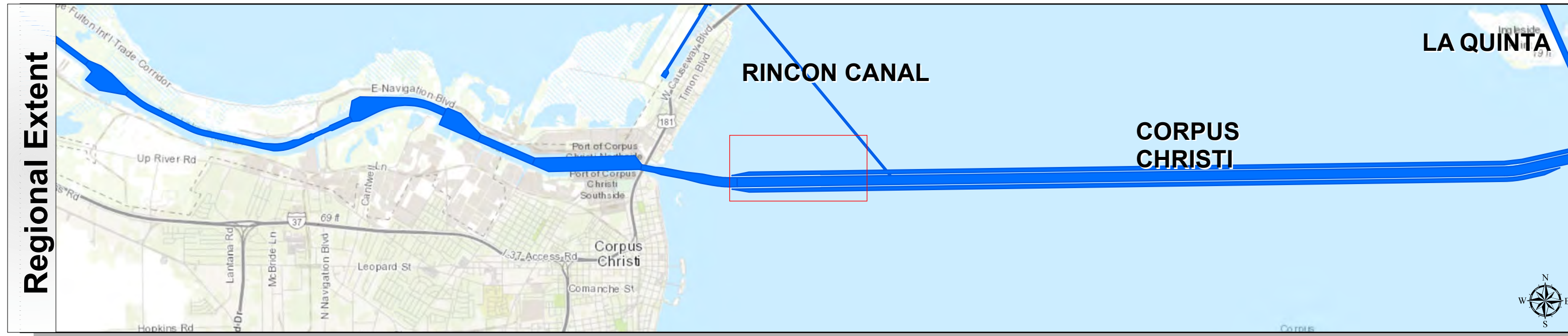
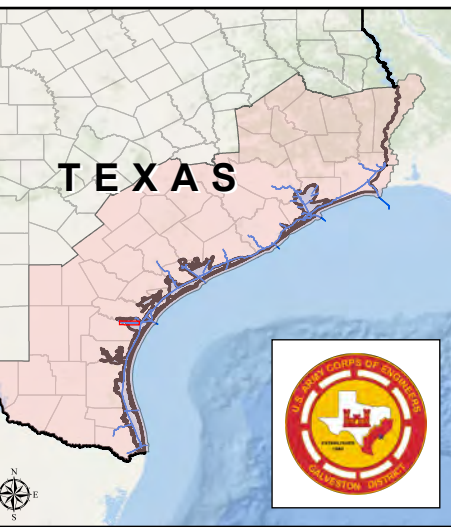
HYDROGRAPHIC SURVEY
 U.S. ARMY ENGINEER DISTRICT
 CORPS OF ENGINEERS
 GALVESTON, TEXAS

Station: 56+553.10 to 107+500
CORPUS CHRISTI
 La Quinta Channel Junction to Beacon 82

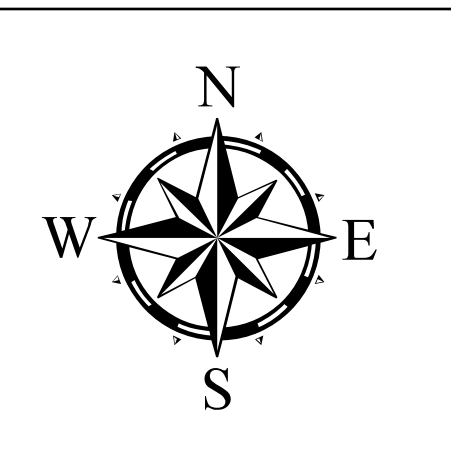
Corpus Christi Ship Channels: La Quinta Channel Junction to Beacon 82



U.S. Army Corps of Engineers
Galveston District



Latest Survey Collection Date: 21 March 2025	Authorized Depth: -54ft.
Document Page: 7 of 7	Width Range: 530ft to 530ft
Scale: 1:3,000	Side Slope Ratio: 1:3 (Rise : Run)
Mapped by: m3odnmhg	PDF Print Date: 4/16/2025
Additional Imagery info:	



Channel Features	Aids to Navigation	MLLW
<ul style="list-style-type: none"> Channel Center Line Channel Toe Channel Dimensions 	<ul style="list-style-type: none"> Green Side Aids Red Side Aids Lights 	<ul style="list-style-type: none"> < 40 40 - 46 46 - 48 48 - 50 50 - 52 52 - 54 54 - 56 56 - 58 > 58

NOTES:
 1. Horizontal coordinates are referenced to Texas State Plane Coordinate System, South Zone NAD83 US Survey Feet.
 2. Elevations are referenced to Mean Lower Low Water (MLLW) datum.
 3. This project was designed by the Galveston District of the U.S. Army Corps of Engineers. The initials and signatures and registration designations of individuals appear on these project documents within the scope of their employment as required by 47CFR 117.113-1, 117.113-2.
 4. The information depicted on this survey map represents the results of surveys made on the dates indicated and can only be considered as indicating the general conditions existing at that time. These conditions are subject to rapid change due to shoaling events. A prudent mariner should not rely exclusively on the information provided here. Required by 33 CFR 209.325.
 5. For the most up to date information please check our website at: <http://www.svg.usace.army.mil/Missions/Navigation/HydrographicSurveys/>
 Service Layer Credits: World Topographic Map: Texas Parks & Wildlife, Esri, HERE, Garmin, INCREMENT P, USGS, METINASA, NGA, EPA, USDA
 World Imagery: Source: Esri, Maxar, Earthstar Geographics, and the GIS User Community
 World Ocean Base: Esri, GEBCO, Garmin, NaturalView

Additional Combined Survey Dates and Stationing:
 COMB_SURV_INFO_HERE

Dredging Reach Extent	0	0.3	0.6	1.2	Miles
Hydrographic Survey Extent	0	255	510	1,020	Feet

Coordinate System: NAD 1983 StatePlane Texas South FIPS 4205 Feet
 Projection: Lambert Conformal Conic

HYDROGRAPHIC SURVEY
 U.S. ARMY ENGINEER DISTRICT
 CORPS OF ENGINEERS
 GALVESTON, TEXAS

Station: 56+553.10 to 107+500
CORPUS CHRISTI
 La Quinta Channel Junction to Beacon 82