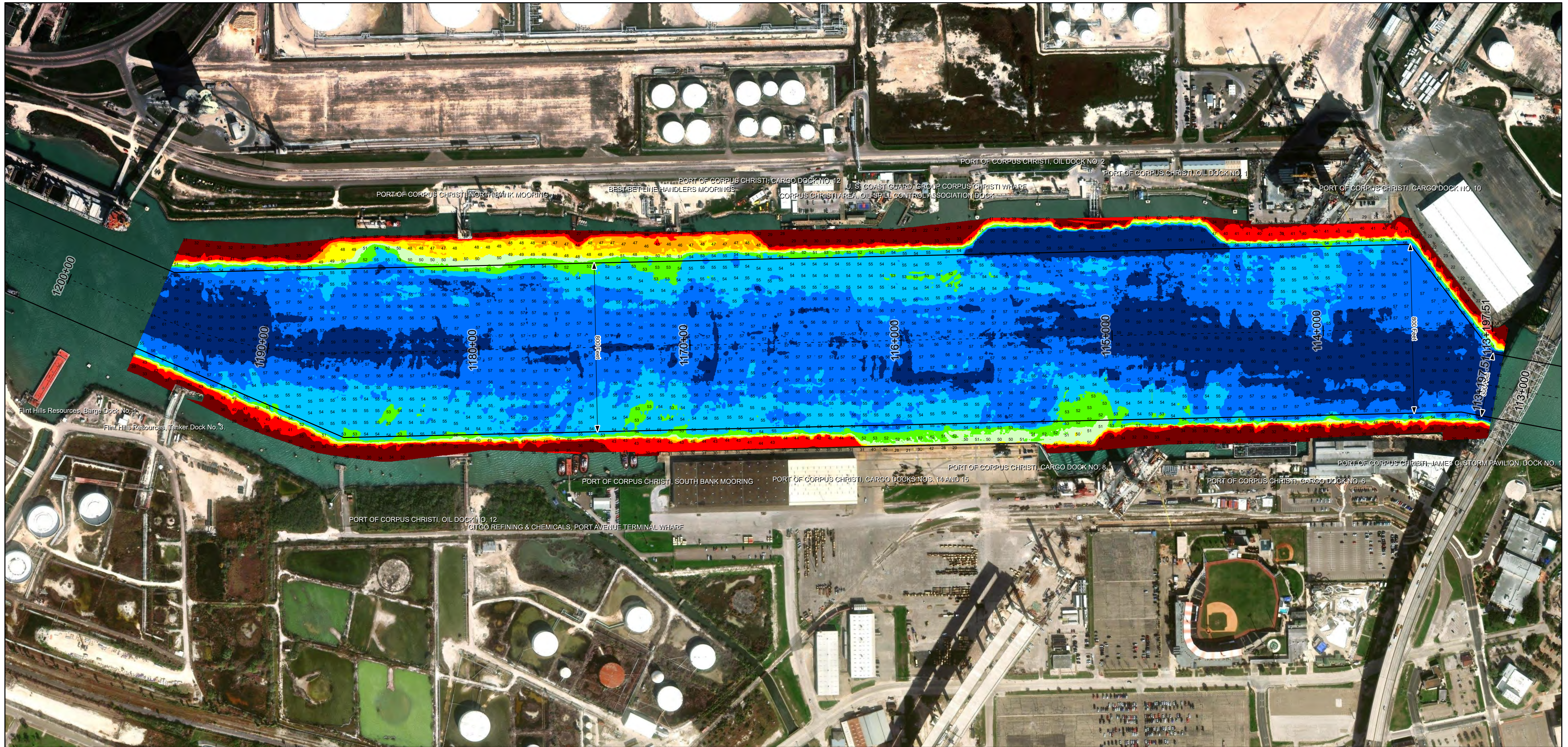
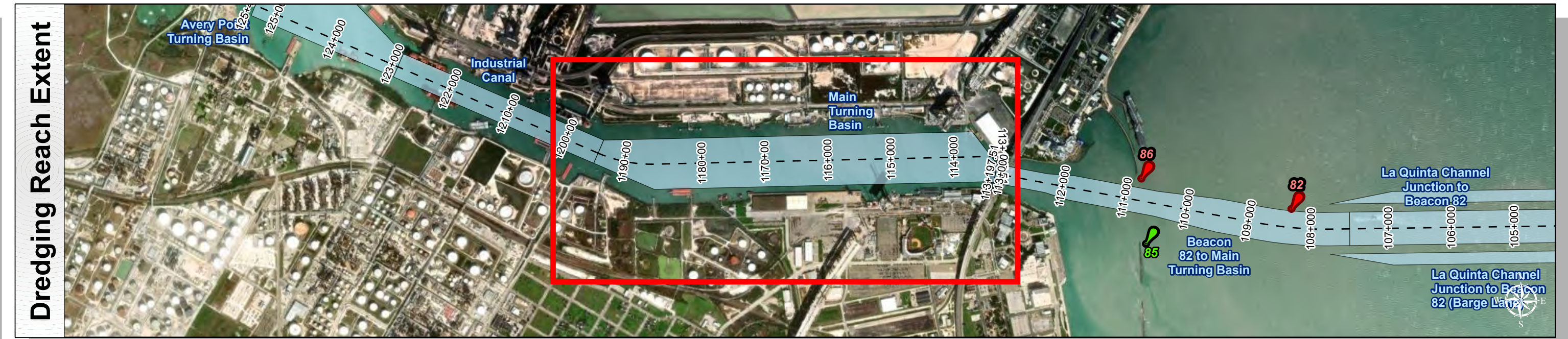
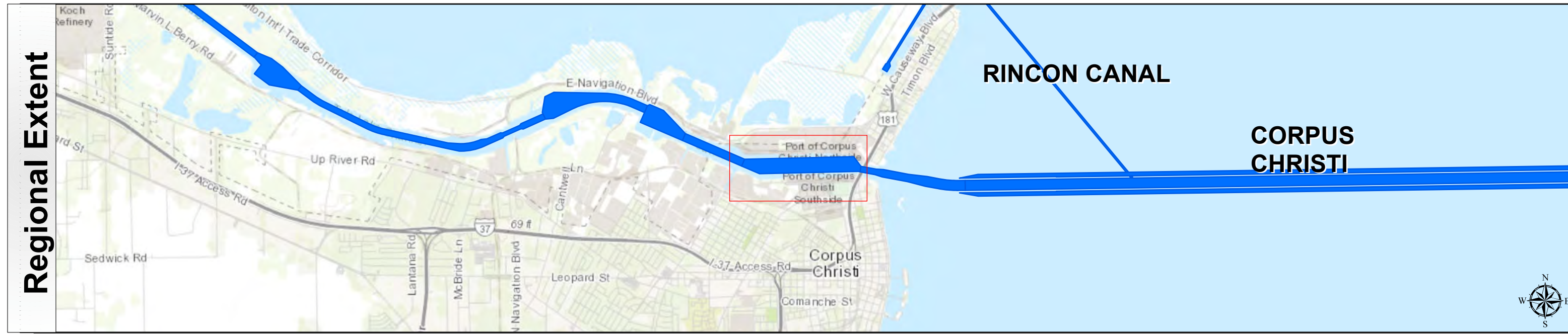


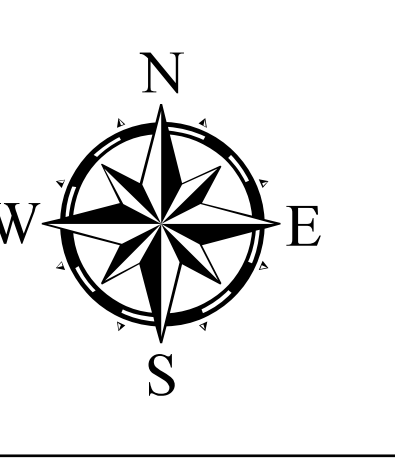
Corpus Christi Ship Channels: Main Turning Basin



U.S. Army Corps of Engineers
Galveston District



Authorized Depth: -54ft.	Latest Survey Collection Date: 10 March 2025
Width Range: 300ft to 800ft	Document Page: 1 of 1
Side Slope Ratio: 1:2 (Rise : Run)	Website Index Number: 23
PDF Print Date: 4/16/2025	Scale: 1:2,750
	Mapped by: m3odnmhg
	Additional Imagery info:



Channel Features

- Channel Center Line
- Channel Toe
- Channel Dimensions

Aids to Navigation

- Green Side Aids
- Red Side Aids
- Lights

MLLW

< 40	40 - 46	46 - 48	48 - 50	50 - 52	52 - 54	54 - 56	56 - 58	> 58
------	---------	---------	---------	---------	---------	---------	---------	------

NOTES:

- Horizontal coordinates are referenced to Texas State Plane Coordinate System, South Zone NAD83 US Survey Feet.
- Elevations are referenced to Mean Lower Low Water (MLLW) datum.
- This project was designed by the Galveston District of the U.S. Army Corps of Engineers. The initials and signatures and registration designations of individuals appear on these project documents within the scope of their employment as required by er1110-1-8132.
- The information depicted on this survey map represents the results of surveys made on the dates indicated and can only be considered as indicating the general conditions existing at that time. These conditions are subject to rapid change due to shoaling events. A prudent mariner should not rely exclusively on the information provided here. Required by 33 CFR 209.225
- For the most up to date information please check our website at: <http://www.svg.usace.army.mil/Missions/Navigation/HydrographicSurveys/>

Service Layer Credits: World Topographic Map: Texas Parks & Wildlife, Esri, HERE, Garmin, INCREMENT P, USGS, METINASA, NGA, EPA, USA World Imagery, Source: Esri, Maxar, Earthstar Geographics, and the GIS User Community World Ocean Base: Esri, GEBCO, Garmin, NaturalVue

Additional Combined Survey Dates and Stationing:
COMB_SURV_INFO_HERE

Coordinate System: NAD 1983 StatePlane Texas South FIPS 4205 Feet
Projection: Lambert Conformal Conic

Dredging Reach Extent

0	0.28	0.55	1.1
---	------	------	-----

Miles

Hydrographic Survey Extent

0	235	470	940
---	-----	-----	-----

Feet

HYDROGRAPHIC SURVEY
U.S. ARMY ENGINEER DISTRICT
CORPS OF ENGINEERS
GALVESTON, TEXAS

Station: 1132+01.52 to 1196+36.70
CORPUS CHRISTI
Main Turning Basin