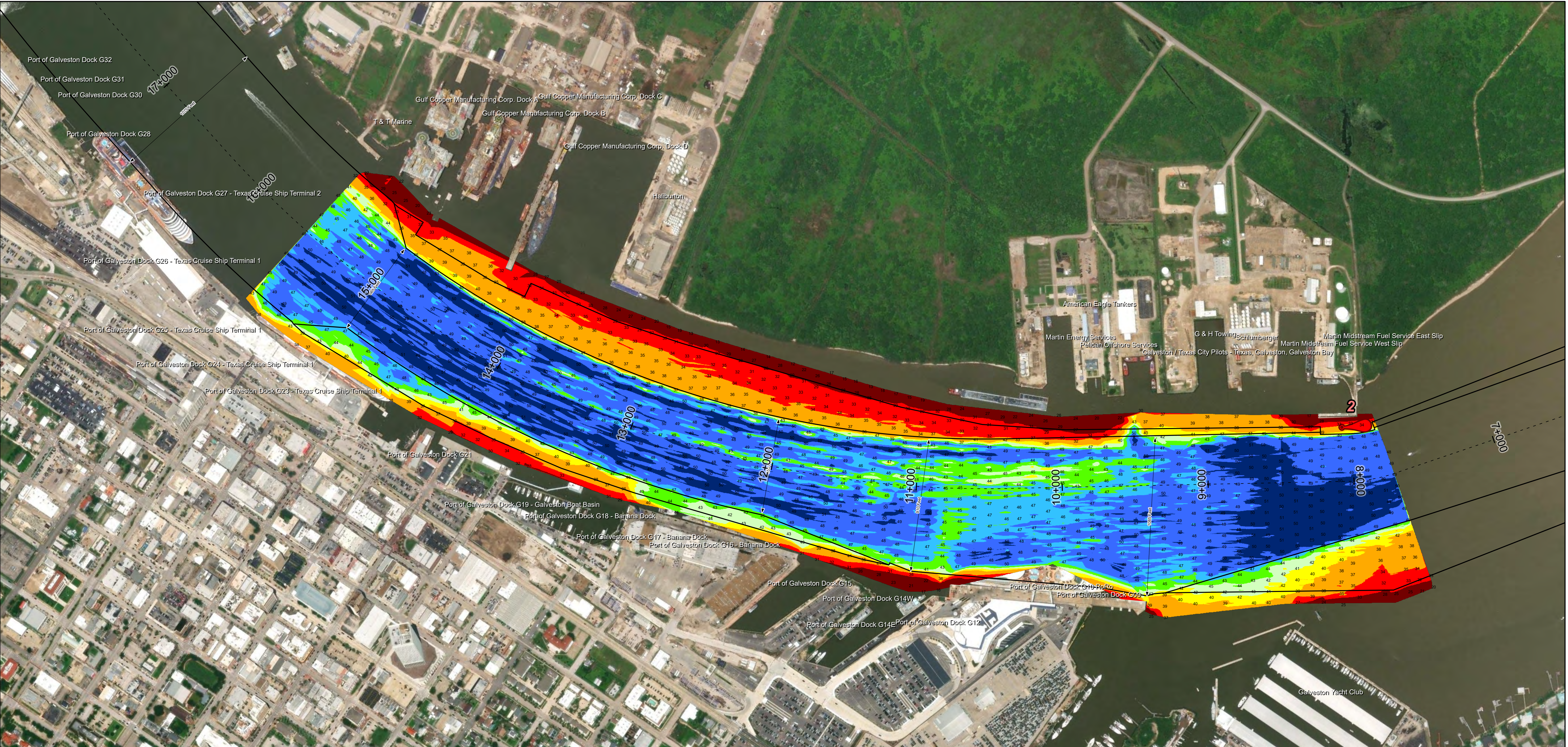
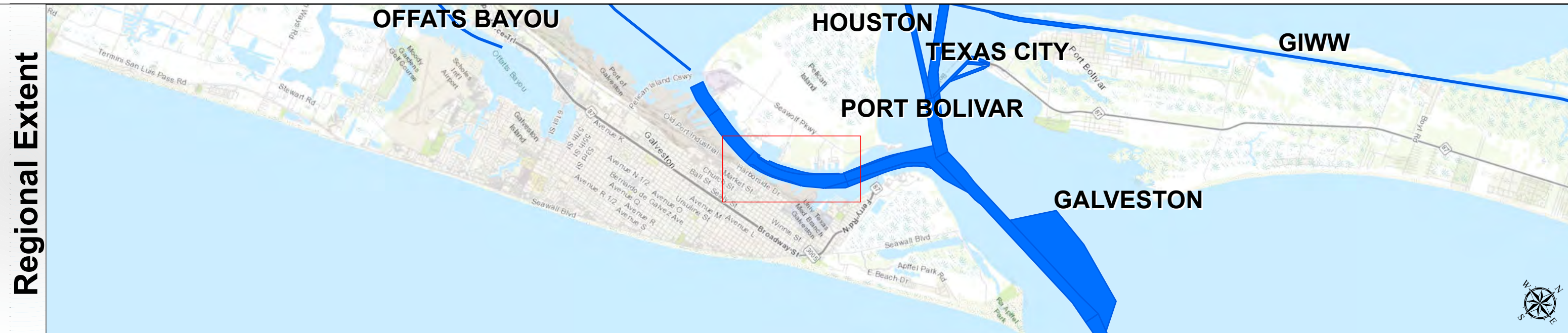


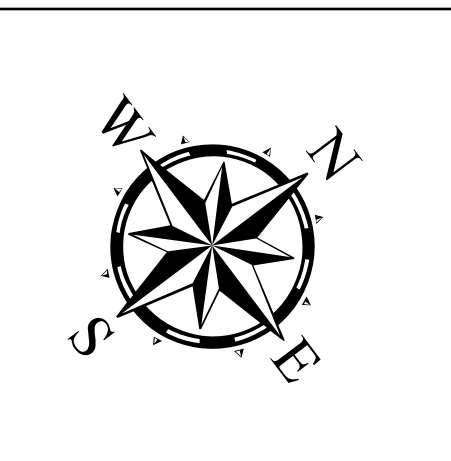
Galveston Harbor Channel: Exxon Oil Dock to Todd Shipyards



U.S. Army Corps of Engineers
Galveston District



Latest Survey Collection Date: 25 January 2025	Authorized Depth: -46ft.
Document Page: 1 of 1	Side Slope Ratio: 1:2.0 (Rise : Run)
Scale: 1:4,000	Website Index Number: 15
Mapped by: m3odnmhg	PDF Print Date: 2/11/2025
Additional Imagery info:	



Channel Features	Aids to Navigation	MLLW
<ul style="list-style-type: none"> Channel Center Line Channel Toe Channel Dimensions 	<ul style="list-style-type: none"> Green Side Aids Red Side Aids Lights 	

NOTES:
 1. Horizontal coordinates are referenced to Texas State Plane Coordinate System, South Central Zone NAD83 US Survey Feet.
 2. Elevations are referenced to Mean Lower Low Water (MLLW) datum.
 3. This project was designed by the Galveston District of the U.S. Army Corps of Engineers. The initials and signatures and registration designations of individuals appear on these project documents within the scope of their employment as required by 47 CFR 111.101-111.102.
 4. The information depicted on this survey map represents the results of surveys made on the dates indicated and can only be considered as indicating the general conditions existing at that time. These conditions are subject to rapid change due to shoaling events. A prudent mariner should not rely exclusively on the information provided here. Required by 33 CFR 209.225.
 5. For the most up to date information please check our website at: <http://www.svg.usace.army.mil/Missions/Navigation/HydrographicSurveys/>
 Service Layer Credits: World Topographic Map, Texas Parks & Wildlife, Esri, HERE, Garmin, USGS, NGA, EPA, USDA, NPS, World Imagery, Maxar, World Ocean Base, Esri, GEBCO, Garmin, NaturalVue

Additional Combined Survey Dates and Stationing:
 Combined surveys: 20240127_PR_6P600_8P600; 20250125_PR_8P600_13P600; 20250206_PR_13P600_15P600.

Dredging Reach Extent		
0	0.42	0.85
1.7 Miles		
Hydrographic Survey Extent		
0	345	690
1,380 Feet		

Coordinate System: NAD 1983 StatePlane Texas South Central FIPS 4204 Feet
 Projection: Lambert Conformal Conic

HYDROGRAPHIC SURVEY
 U.S. ARMY ENGINEER DISTRICT
 CORPS OF ENGINEERS
 GALVESTON, TEXAS

Station: 7+879.63 to 15+600
GALVESTON
 Exxon Oil Dock to Todd Shipyards