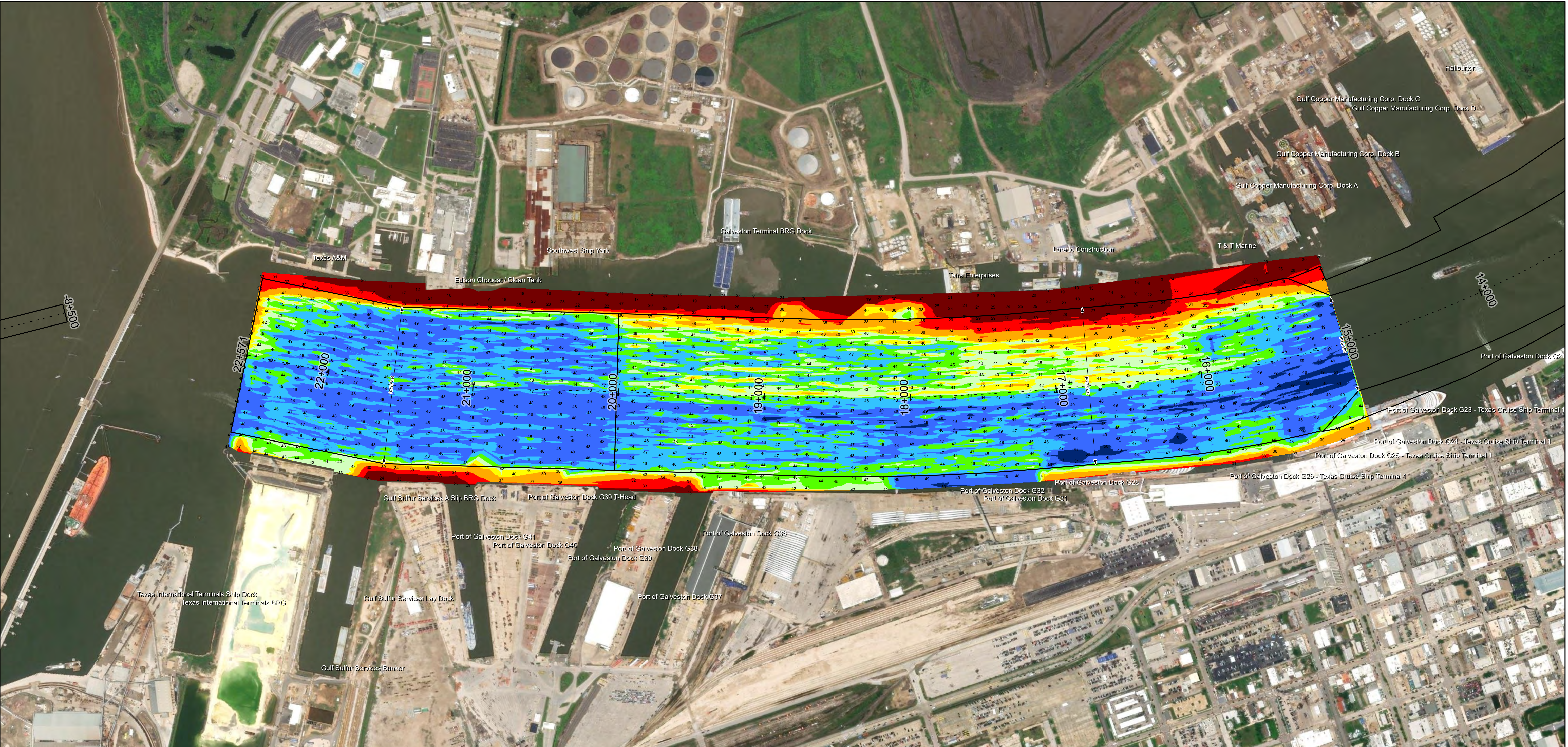


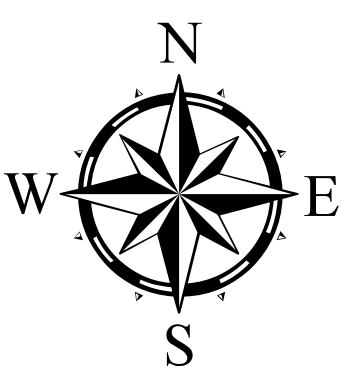
Galveston Harbor Channel: Todd Shipyards to Pier B (43rd Street)



U.S. Army Corps of Engineers
Galveston District



| | |
|---|--------------------------------------|
| Latest Survey Collection Date: 06 February 2025 | Authorized Depth: -46ft. |
| Document Page: 1 of 1 | Side Slope Ratio: 1:2.0 (Rise : Run) |
| Scale: 1:4,000 | Website Index Number: 16 |
| Mapped by: m3odnmhg | PDF Print Date: 2/11/2025 |
| Additional Imagery info: | |



| Channel Features | Aids to Navigation | MLLW |
|--|--|------|
| <ul style="list-style-type: none"> Channel Center Line Channel Toe Channel Dimensions | <ul style="list-style-type: none"> Green Side Aids Red Side Aids Lights | |

NOTES:

- Horizontal coordinates are referenced to Texas State Plane Coordinate System, South Central Zone NAD83 US Survey Feet.
- Elevations are referenced to Mean Lower Low Water (MLLW) datum.
- This project was designed by the Galveston District of the U.S. Army Corps of Engineers. The initials and signatures and registration designations of individuals appear on these project documents within the scope of their employment as required by 47 CFR 111.11-18132.
- The information depicted on this survey map represents the results of surveys made on the dates indicated and can only be considered as indicating the general conditions existing at that time. These conditions are subject to rapid change due to shoaling events. A prudent mariner should not rely exclusively on the information provided here. Required by 33 CFR 209.225
- For the most up to date information please check our website at: <http://www.svg.usace.army.mil/Missions/Navigation/HydrographicSurveys/>

Service Layer Credits: World Topographic Map, Texas Parks & Wildlife, Esri, HERE, Garmin, USGS, NGA, EPA, USDA, NPS, World Imagery, Maxar, World Ocean Base, Esri, GEBCO, Garmin, NaturalVue

Additional Combined Survey Dates and Stationing:
COMB_SURV_INFO_HERE

| Dredging Reach Extent | Hydrographic Survey Extent |
|-----------------------|----------------------------|
| 0 0.42 0.85 1.7 Miles | 0 345 690 1,380 Feet |

Coordinate System: NAD 1983 StatePlane Texas South Central FIPS 4204 Feet
Projection: Lambert Conformal Conic

HYDROGRAPHIC SURVEY
U.S. ARMY ENGINEER DISTRICT
CORPS OF ENGINEERS
GALVESTON, TEXAS

Station: 15+600 to 22+571
GALVESTON
Todd Shipyards to Pier B (43rd Street)