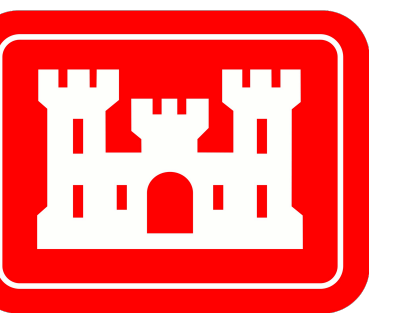
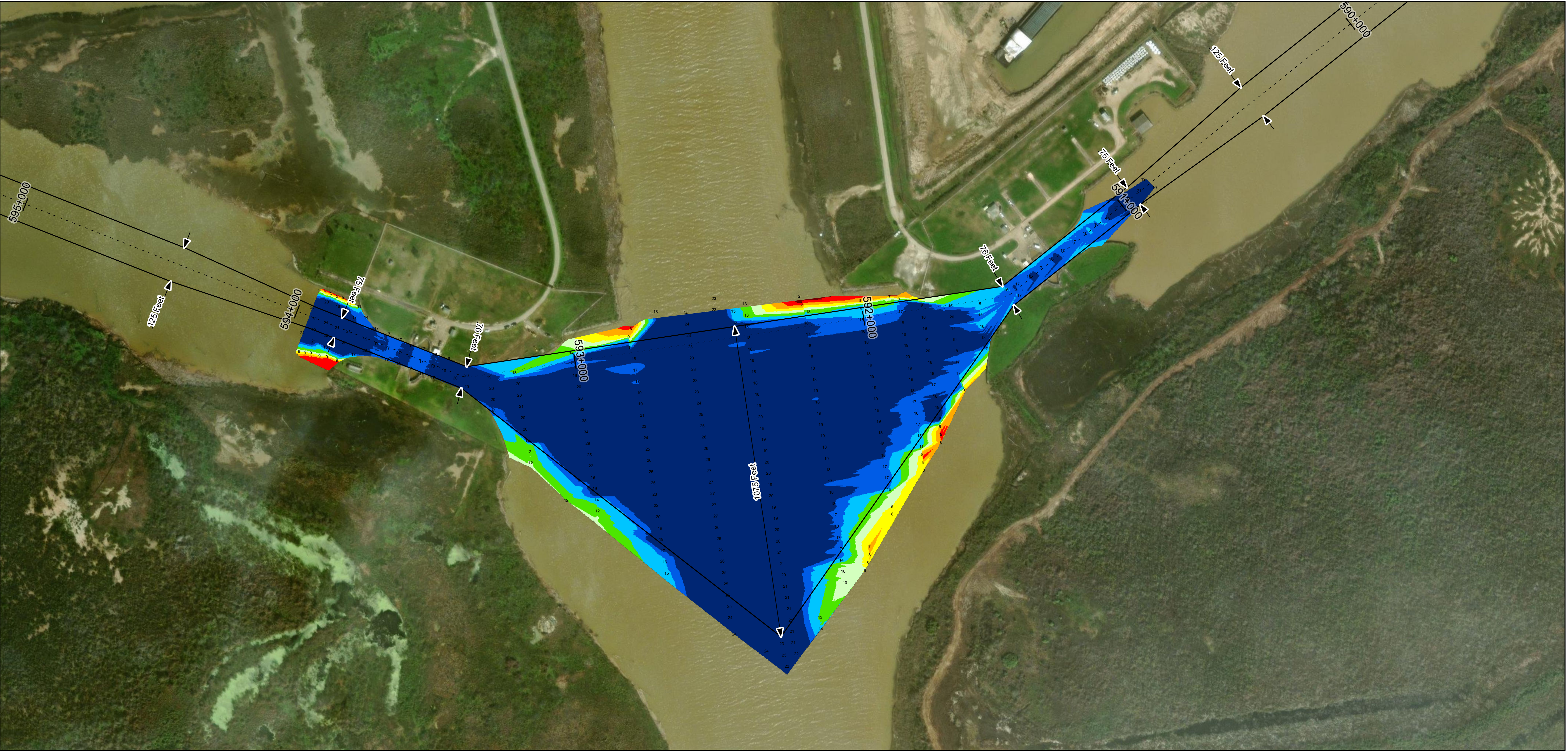
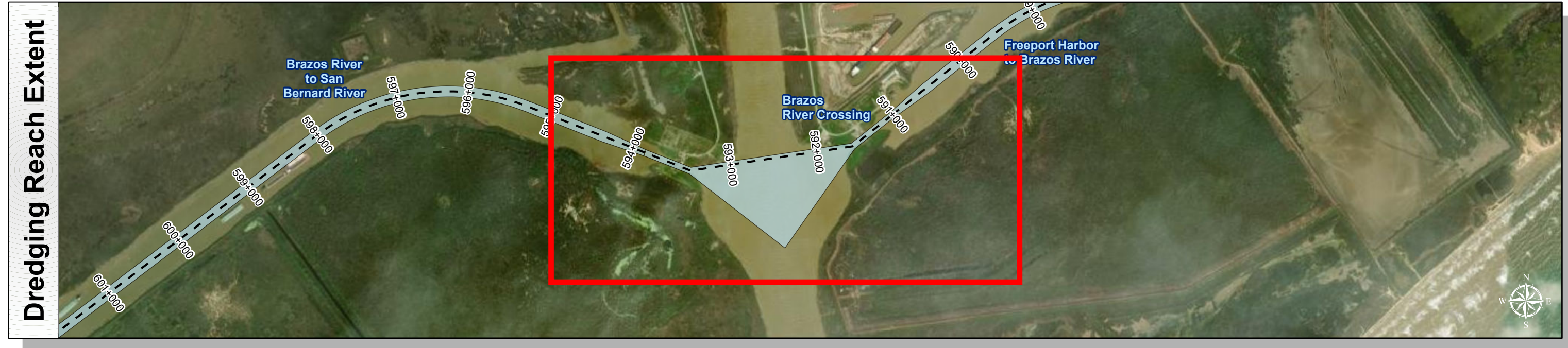


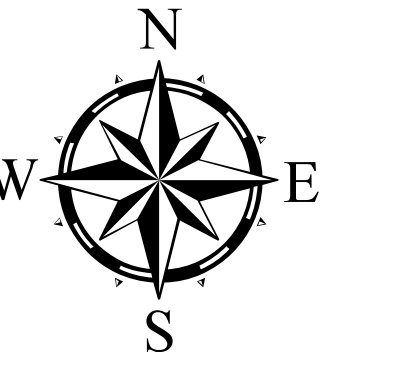
Gulf Intracoastal Waterway: Brazos River Crossing



U.S. Army Corps of Engineers
Galveston District



Latest Survey Collection Date: 03 April 2025	Authorized Depth: -14ft.
Document Page: 1 of 1	Width Range: 75ft to 1075ft
Scale: 1:2,000	Side Slope Ratio: (Rise : Run)
Mapped by: M3AOXPAC	PDF Print Date: 4/24/2025
Additional Imagery info:	



Channel Features

- Channel Center Line
- Channel Toe
- Channel Dimensions

Aids to Navigation

- Green Side Aids
- Red Side Aids
- Lights

MLLW

0 - 4	4 - 6	6 - 8	8 - 10	10 - 12	12 - 14	14 - 16	16 - 18	< 18
-------	-------	-------	--------	---------	---------	---------	---------	------

NOTES:

- Horizontal coordinates are referenced to Texas State Plane Coordinate System, South Central Zone NAD83 US Survey Feet.
- Elevations are referenced to Mean Lower Low Water (MLLW) datum.
- This project was designed by the Galveston District of the U.S. Army Corps of Engineers. The initials and signatures and registration designations of individuals appear on these project documents within the scope of their employment as required by er1110.1-8132.
- The information depicted on this survey map represents the results of surveys made on the dates indicated and can only be considered as indicating the general conditions existing at that time. These conditions are subject to rapid change due to shoaling events. A prudent mariner should not rely exclusively on the information provided here. Required by 33 CFR 209.325
- For the most up to date information please check our website at: <http://www.svg.usace.army.mil/Missions/Navigation/HydrographicSurveys/>

Service Layer Credits: World Imagery: Source: Esri, Maxar, Earthstar Geographics, and the GIS User Community
World Imagery: Maxar, Microsoft
World Topographic Map: Brazos County, Texas Parks & Wildlife, Esri, HERE, Garmin, INCREMENT P, USGS, METINASA, NGA, EPA, USA
World Ocean Base: Esri, GEBCO, Garmin, NaturalVue

Additional Combined Survey Dates and Stationing:
 Combined survey dates 20240711, 20240714, 20241009_AD_591P600_593P390;
 20250403_PR_591P874_593P200

Coordinate System: NAD 1983 StatePlane Texas South Central FIPS 4204 Feet
 Projection: Lambert Conformal Conic

Dredging Reach Extent

Hydrographic Survey Extent

HYDROGRAPHIC SURVEY
 U.S. ARMY ENGINEER DISTRICT
 CORPS OF ENGINEERS
 GALVESTON, TEXAS

Station: 590+930.03 to 593+940
 GIWW
 Brazos River Crossing