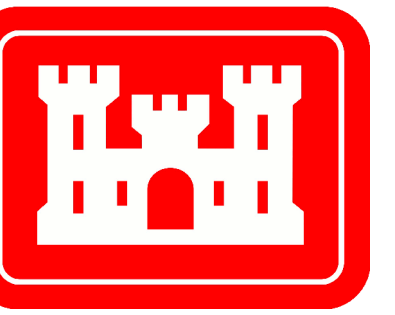
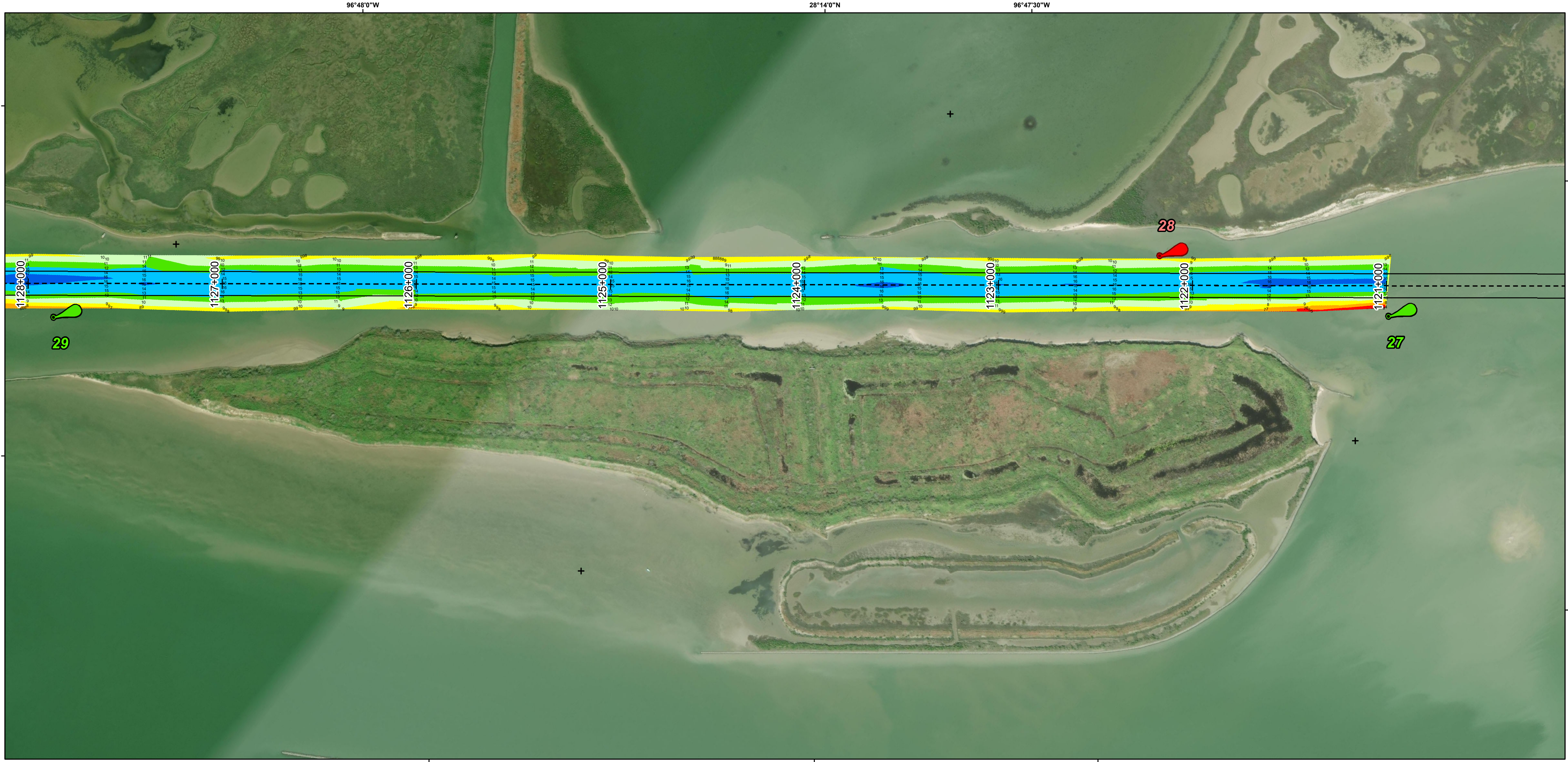
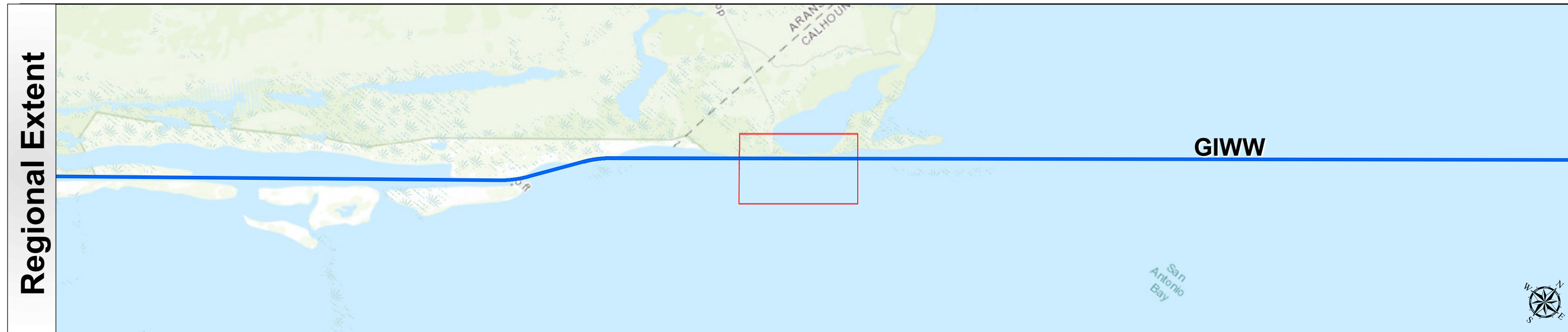


# Gulf Intracoastal Waterway: San Antonio Bay to Aransas Bay (Light 1)



U.S. Army Corps of Engineers  
Galveston District



**Channel Features**

- Channel Toe
- Channel Center Line
- Channel Station Lines
- Channel Dimensions

**Aids to Navigation**

- Green Side Aids
- Red Side Aids
- Lights

**MLLW**

0 - 4  
4 - 6  
6 - 8  
8 - 10  
10 - 12  
12 - 14  
14 - 16  
16 - 18  
< 18

**NOAA Bathymetry (DREDGING REACH EXTENT)**

0 - 10   10 - 15   15 - 20   20 - 25   25 - 30   30 - 50

**NOTES:**

- HORIZONTAL COORDINATES ARE REFERENCED TO TEXAS STATE PLANE COORDINATE SYSTEM, SOUTH CENTRAL ZONE NAD83 US SURVEY FEET.
- ELEVATIONS ARE REFERENCED TO MEAN LOWER LOW TIDE (MLLW) DATUM.
- THIS PROJECT WAS DESIGNED BY THE GALVESTON DISTRICT OF THE U.S. ARMY CORPS OF ENGINEERS. THE INITIALS AND SIGNATURES AND REGISTRATION DESIGNATIONS OF INDIVIDUALS APPEAR ON THESE PROJECT DOCUMENTS WITHIN THE SCOPE OF THEIR EMPLOYMENT AS REQUIRED BY ER1110-1-8152.

- THE INFORMATION DEPICTED ON THIS SURVEY MAP REPRESENTS THE RESULTS OF SURVEYS MADE ON THE DATES INDICATED AND CAN ONLY BE CONSIDERED AS INDICATING THE GENERAL CONDITIONS EXISTING AT THAT TIME. THESE CONDITIONS ARE SUBJECT TO RAPID CHANGE DUE TO SHOALING EVENTS. A PRUDENT MARINER SHOULD NOT RELY EXCLUSIVELY ON THE INFORMATION PROVIDED HERE. REQUIRED BY 33 CFR 209.325
- FOR THE MOST UP TO DATE INFORMATION PLEASE CHECK OUR WEBSITE AT: [HTTP://WWW.SWG.USACE.ARMY.MIL/MISSIONS/NAVIGATION/HYDROGRAPHICS/SURVEYS/](http://www.swg.usace.army.mil/missions/navigation/hydrographics/surveys/)
- NOAA BATHYMETRY CONTOURS PRODUCED FROM HISTORIC BATHYMETRIC (HYDROGRAPHIC) SURVEYS CONDUCTED BY THE NOAA NATIONAL OCEAN SERVICE COAST SURVEY, AVAILABLE FROM THE NATIONAL GEOPHYSICAL DATA CENTER. SURVEYS VARY AS TO SOUNDING DENSITY, ACCURACY OF DEPTH, ACCURACY OF NAVIGATION, ZERO DATUM, DATE OF SURVEY AND TYPE OF INSTRUMENTATION.

Service Layer Credits: Source: Esri, DigitalGlobe, GeoEye, Earthstar Geographics, CNES/Airbus DS, USDA, USGS, AeroGRID, IGN, and the GIS User Community  
Sources: Esri, HERE, Garmin, Intermap, Increment P Corp., GEBCO, USGS, FAO, NPS, NRCAN, GeoBase, IGN, Kadaster NL, Ordnance Survey, Esri Japan, METI, Esri China (Hong Kong), (c) OpenStreetMap contributors, and the GIS User Community  
Esri, Garmin, GEBCO, NOAA NGDC, and other contributors



Coordinate System: NAD 1983 StatePlane Texas South Central FIPS 4204 Feet  
Projection: Lambert Conformal Conic / Datum: North American 1983

**Dredging Reach Extent**

0   0.3   0.6   1.2  
Miles

**Hydrographic Survey Extent**

0   260   520   1,040  
Feet

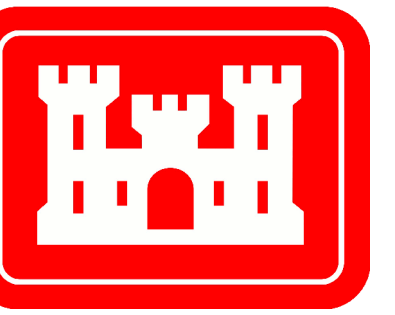
Survey Date(s): 25 November 2019	Authorized Depth: -14ft.
Page: 160 of 190	Side Slope Ratio: (Rise : Run)
Map:	Additional Imagery: © DigitalGlobe Inc.
Scale: 1:3,000	Print Date: 11/25/2019
Mapped by: m3odmnm	
Additional Info:	

**HYDROGRAPHIC SURVEY**  
U.S. ARMY ENGINEER DISTRICT  
CORPS OF ENGINEERS  
GALVESTON, TEXAS

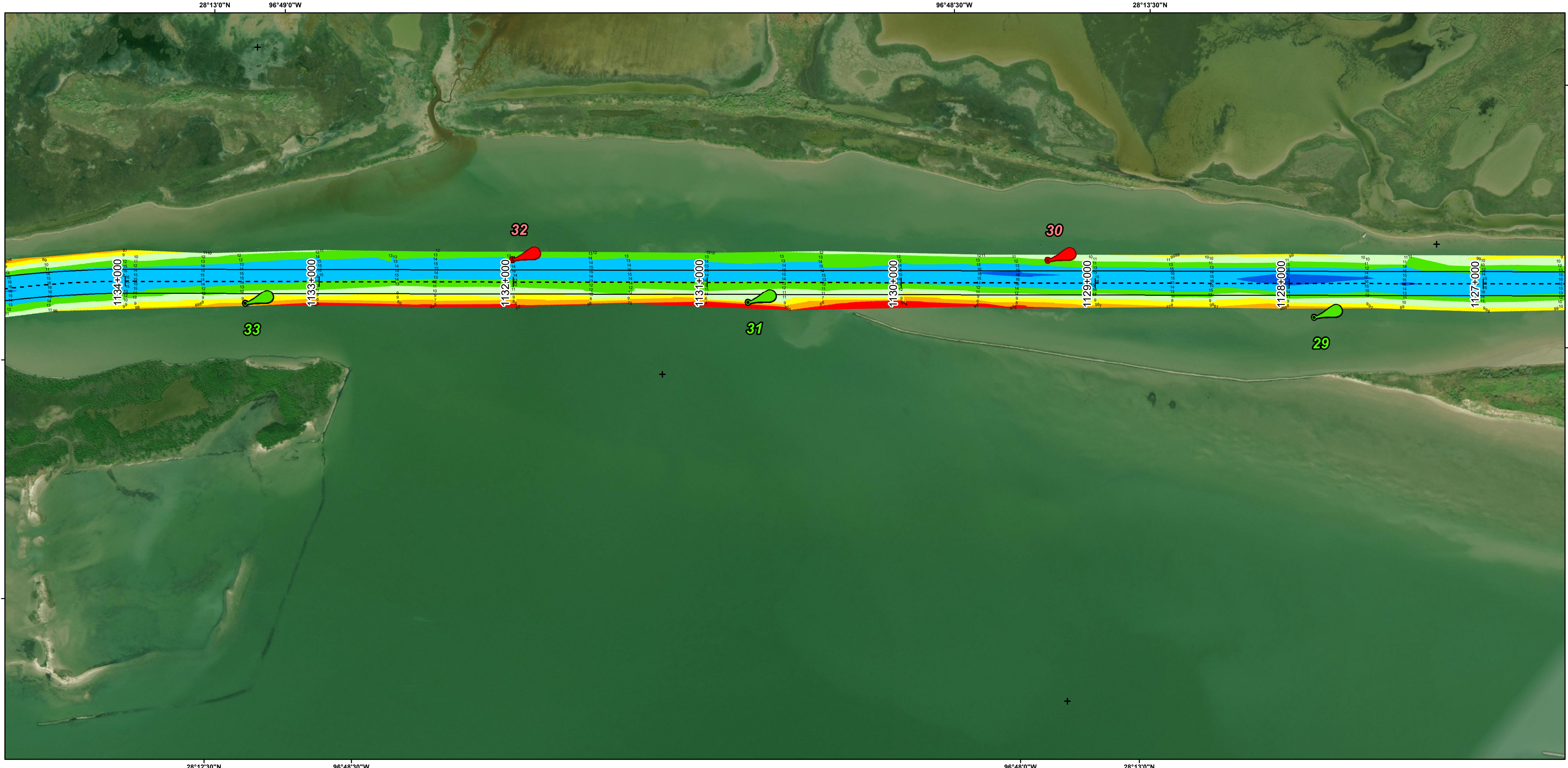
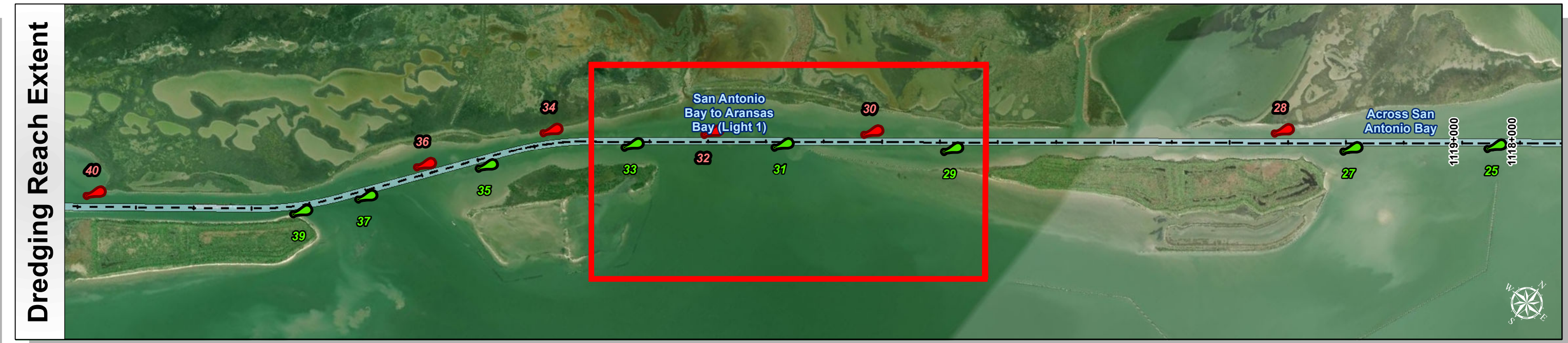
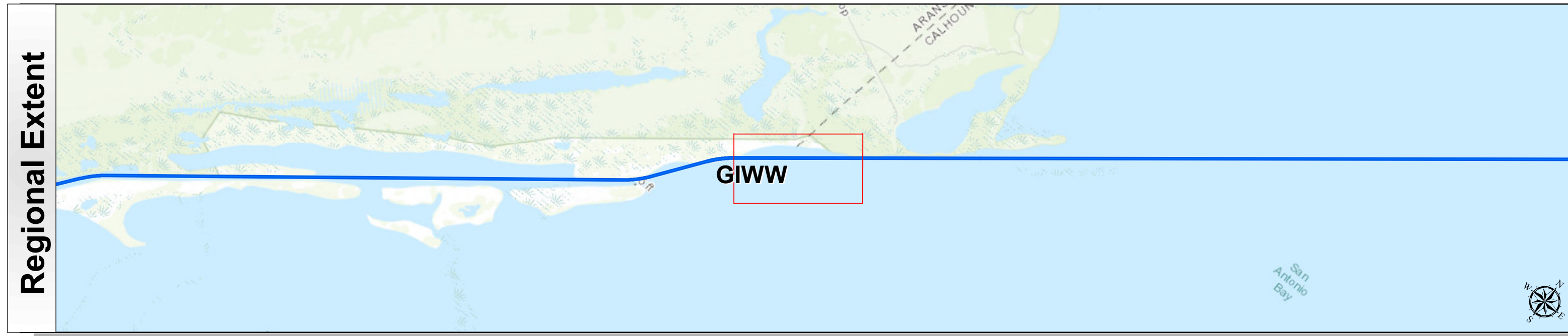
**Station: 1121+000 to 1178+000**  
GIWW  
, TEXAS



# Gulf Intracoastal Waterway: San Antonio Bay to Aransas Bay (Light 1)



U.S. Army Corps of Engineers  
Galveston District



**Channel Features**

- Channel Toe
- Channel Center Line
- Channel Station Lines
- Channel Dimensions

**Aids to Navigation**

- Green Side Aids
- Red Side Aids
- Lights

**MLLW**

0 - 4  
4 - 6  
6 - 8  
8 - 10  
10 - 12  
12 - 14  
14 - 16  
16 - 18  
< 18

**NOAA Bathymetry (DREDGING REACH EXTENT)**

0 - 10  
10 - 15  
15 - 20  
20 - 25  
25 - 30  
30 - 50

**NOTES:**

- HORIZONTAL COORDINATES ARE REFERENCED TO TEXAS STATE PLANE COORDINATE SYSTEM, SOUTH CENTRAL ZONE NAD83 US SURVEY FEET.
- ELEVATIONS ARE REFERENCED TO MEAN LOWER LOW TIDE (MLLW) DATUM.
- THIS PROJECT WAS DESIGNED BY THE GALVESTON DISTRICT OF THE U.S. ARMY CORPS OF ENGINEERS. THE INITIALS AND SIGNATURES AND REGISTRATION DESIGNATIONS OF INDIVIDUALS APPEAR ON THESE PROJECT DOCUMENTS WITHIN THE SCOPE OF THEIR EMPLOYMENT AS REQUIRED BY ER1110-1-8152.

- THE INFORMATION DEPICTED ON THIS SURVEY MAP REPRESENTS THE RESULTS OF SURVEYS MADE ON THE DATES INDICATED AND CAN ONLY BE CONSIDERED AS INDICATING THE GENERAL CONDITIONS EXISTING AT THAT TIME. THESE CONDITIONS ARE SUBJECT TO RAPID CHANGE DUE TO SHOALING EVENTS. A PRUDENT MARINER SHOULD NOT RELY EXCLUSIVELY ON THE INFORMATION PROVIDED HERE. REQUIRED BY 33 CFR 209.325
- FOR THE MOST UP TO DATE INFORMATION PLEASE CHECK OUR WEBSITE AT: [HTTP://WWW.SWG.USACE.ARMY.MIL/MISSIONS/NAVIGATION/HYDROGRAPHIC-SURVEYS/](http://www.swg.usace.army.mil/missions/navigation/hydrographic-surveys/)
- NOAA BATHYMETRY CONTOURS PRODUCED FROM HISTORIC BATHYMETRIC (HYDROGRAPHIC) SURVEYS CONDUCTED BY THE NOAA NATIONAL OCEAN SERVICE/COAST SURVEY, AVAILABLE FROM THE NATIONAL GEOPHYSICAL DATA CENTER. SURVEYS VARY AS TO SOUNDING DENSITY, ACCURACY OF DEPTH, ACCURACY OF NAVIGATION, ZERO DATUM, DATE OF SURVEY AND TYPE OF INSTRUMENTATION.

Service Layer Credits: Source: Esri, DigitalGlobe, GeoEye, Earthstar Geographics, CNES/Airbus DS, USDA, USGS, AeroGRID, IGN, and the GIS User Community  
Sources: Esri, HERE, Garmin, Intermap, increment P Corp., GEBCO, USGS, FAO, NPS, NRCAN, GeoBase, IGN, Kadaster NL, Ordnance Survey, Esri Japan, METI, Esri China (Hong Kong), (c) OpenStreetMap contributors, and the GIS User Community  
Esri, Garmin, GEBCO, NOAA NGDC, and other contributors



Coordinate System: NAD 1983 StatePlane Texas South Central FIPS 4204 Feet  
Projection: Lambert Conformal Conic /Datum: North American 1983

**Dredging Reach Extent**

0 0.3 0.6 1.2 Miles

**Hydrographic Survey Extent**

0 260 520 1,040 Feet

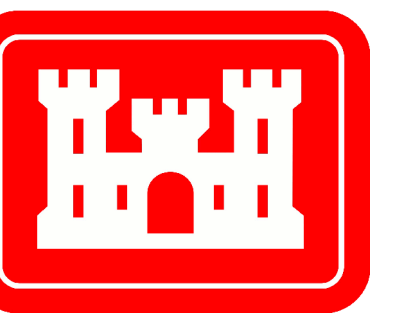
Survey Date(s): 25 November 2019	Authorized Depth: -14ft.
Page: 161 of 190	Side Slope Ratio: (Rise : Run)
Map:	Additional Imagery: © DigitalGlobe Inc.
Scale: 1:3,000	Print Date: 11/25/2019
Mapped by: m3odmming	
Additional Info:	

**HYDROGRAPHIC SURVEY**  
U.S. ARMY ENGINEER DISTRICT  
CORPS OF ENGINEERS  
GALVESTON, TEXAS

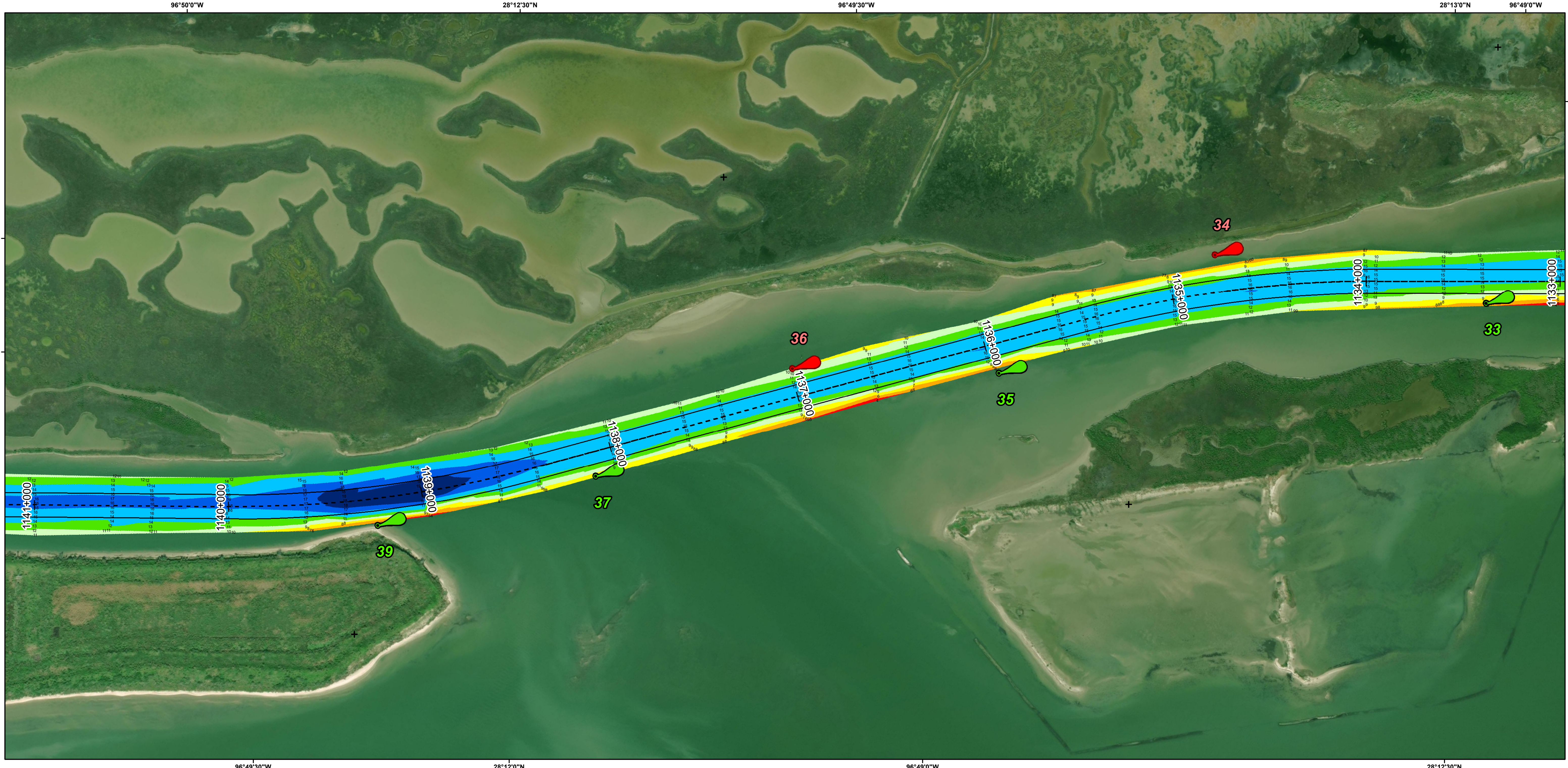
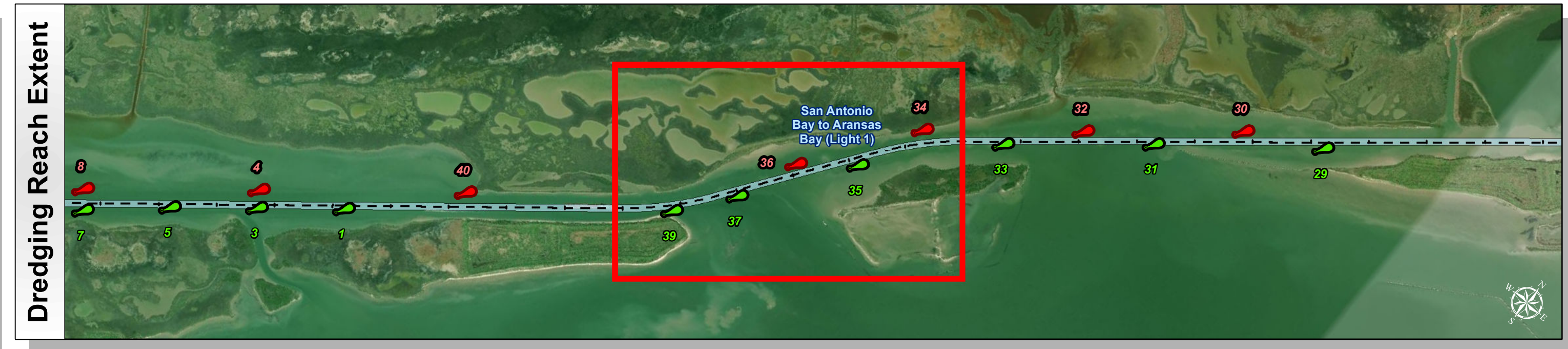
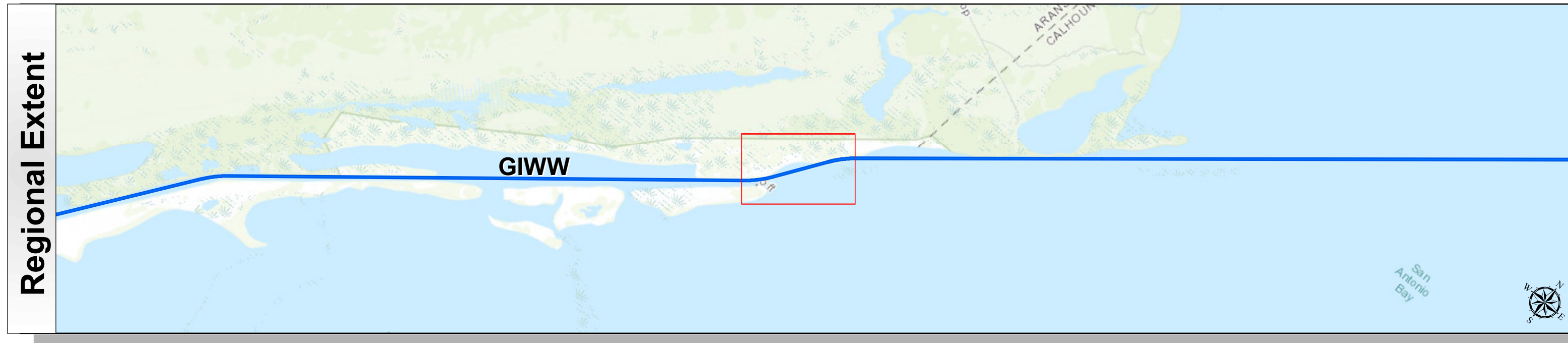
**Station: 1121+000 to 1178+000**  
GIWW  
, TEXAS



# Gulf Intracoastal Waterway: San Antonio Bay to Aransas Bay (Light 1)



U.S. Army Corps of Engineers  
Galveston District



**Channel Features**

- Channel Toe
- Channel Center Line
- Channel Station Lines
- Channel Dimensions

**Aids to Navigation**

- Green Side Aids
- Red Side Aids
- Lights

**MLLW**

0 - 4  
4 - 6  
6 - 8  
8 - 10  
10 - 12  
12 - 14  
14 - 16  
16 - 18  
< 18

**NOAA Bathymetry (DREDGING REACH EXTENT)**

0 - 10   10 - 15   15 - 20   20 - 25   25 - 30   30 - 50

**NOTES:**

- HORIZONTAL COORDINATES ARE REFERENCED TO TEXAS STATE PLANE COORDINATE SYSTEM, SOUTH CENTRAL ZONE NAD83 US SURVEY FEET.
- ELEVATIONS ARE REFERENCED TO MEAN LOWER LOW TIDE (MLLW) DATUM.
- THIS PROJECT WAS DESIGNED BY THE GALVESTON DISTRICT OF THE U.S. ARMY CORPS OF ENGINEERS. THE INITIALS AND SIGNATURES AND REGISTRATION DESIGNATIONS OF INDIVIDUALS APPEAR ON THESE PROJECT DOCUMENTS WITHIN THE SCOPE OF THEIR EMPLOYMENT AS REQUIRED BY ER1110-1-8152.

- THE INFORMATION DEPICTED ON THIS SURVEY MAP REPRESENTS THE RESULTS OF SURVEYS MADE ON THE DATES INDICATED AND CAN ONLY BE CONSIDERED AS INDICATING THE GENERAL CONDITIONS EXISTING AT THAT TIME. THESE CONDITIONS ARE SUBJECT TO RAPID CHANGE DUE TO SHOALING EVENTS. A PRUDENT MARINER SHOULD NOT RELY EXCLUSIVELY ON THE INFORMATION PROVIDED HERE. REQUIRED BY 33 CFR 209.325
- FOR THE MOST UP TO DATE INFORMATION PLEASE CHECK OUR WEBSITE AT: [HTTP://WWW.SWG.USACE.ARMY.MIL/MISSIONS/NAVIGATION/HYDROGRAPHICSURVEYS/](http://www.swg.usace.army.mil/missions/navigation/hydrographicsurveys/)
- NOAA BATHYMETRY CONTOURS PRODUCED FROM HISTORIC BATHYMETRIC (HYDROGRAPHIC) SURVEYS CONDUCTED BY THE NOAA NATIONAL OCEAN SERVICE/COAST SURVEY, AVAILABLE FROM THE NATIONAL GEOPHYSICAL DATA CENTER. SURVEYS VARY AS TO SOUNDING DENSITY, ACCURACY OF DEPTH, ACCURACY OF NAVIGATION, ZERO DATUM, DATE OF SURVEY AND TYPE OF INSTRUMENTATION.

Service Layer Credits: Source: Esri, DigitalGlobe, GeoEye, Earthstar Geographics, CNES/Airbus DS, USDA, USGS, AeroGRID, IGN, and the GIS User Community  
Sources: Esri, HERE, Garmin, Intermap, Increment P Corp., GEBCO, USGS, FAO, NPS, NRCAN, GeoBase, IGN, Kadaster NL, Ordnance Survey, Esri Japan, METI, Esri China (Hong Kong), (c) OpenStreetMap contributors, and the GIS User Community  
Esri, Garmin, GEBCO, NOAA NGDC, and other contributors



Coordinate System: NAD 1983 StatePlane Texas South Central FIPS 4204 Feet  
Projection: Lambert Conformal Conic /Datum: North American 1983

**Dredging Reach Extent**

0   0.3   0.6   1.2  
Miles

**Hydrographic Survey Extent**

0   260   520   1,040  
Feet

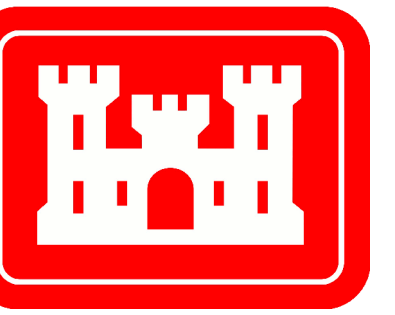
Survey Date(s): 25 November 2019	Authorized Depth: -14ft.
Page: 162 of 190	Side Slope Ratio: (Rise : Run)
Map:	Additional Imagery: © DigitalGlobe Inc.
Scale: 1:3,000	Print Date: 11/25/2019
Mapped by: m3odmming	
Additional Info:	

**HYDROGRAPHIC SURVEY**  
U.S. ARMY ENGINEER DISTRICT  
CORPS OF ENGINEERS  
GALVESTON, TEXAS

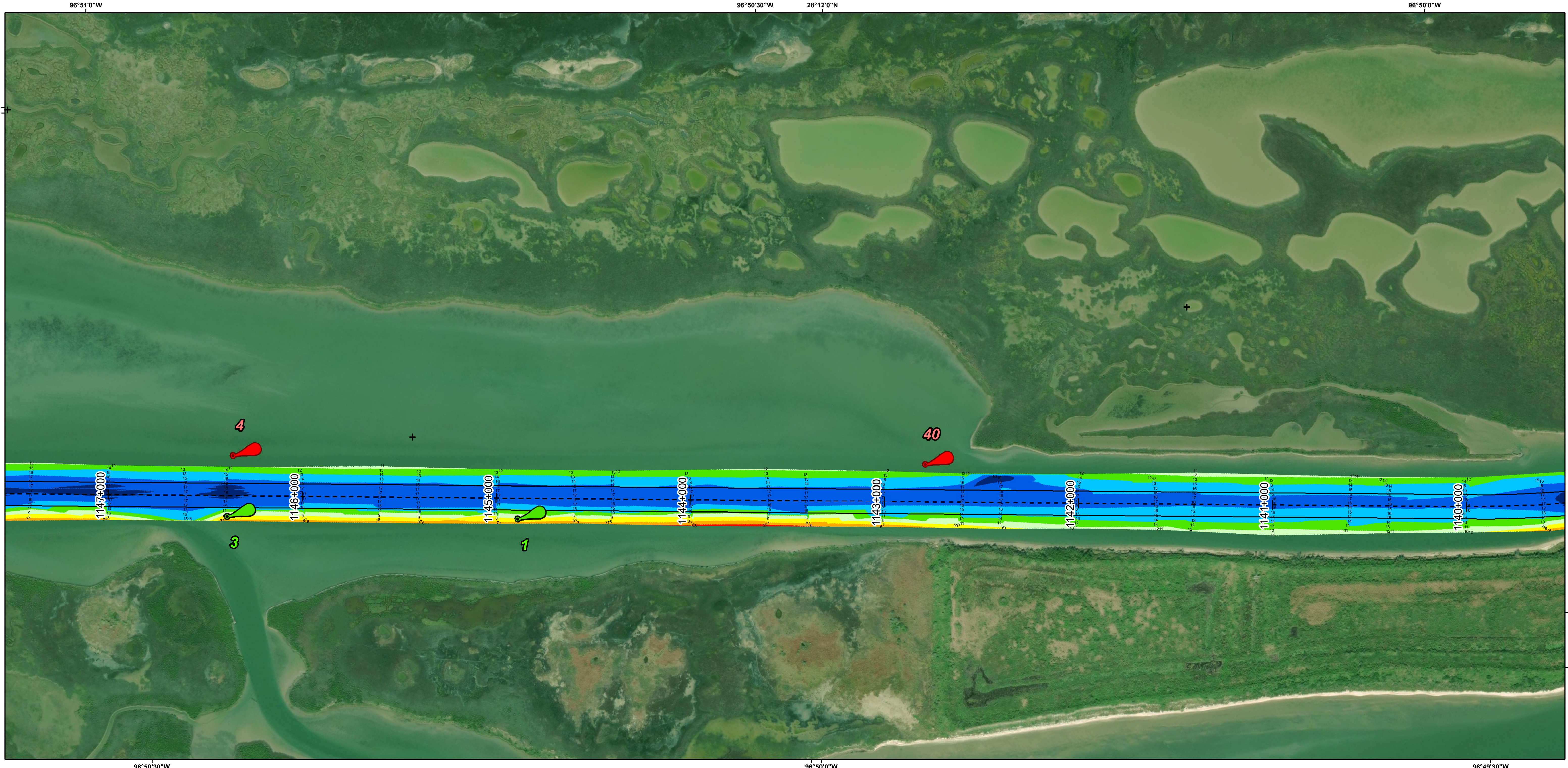
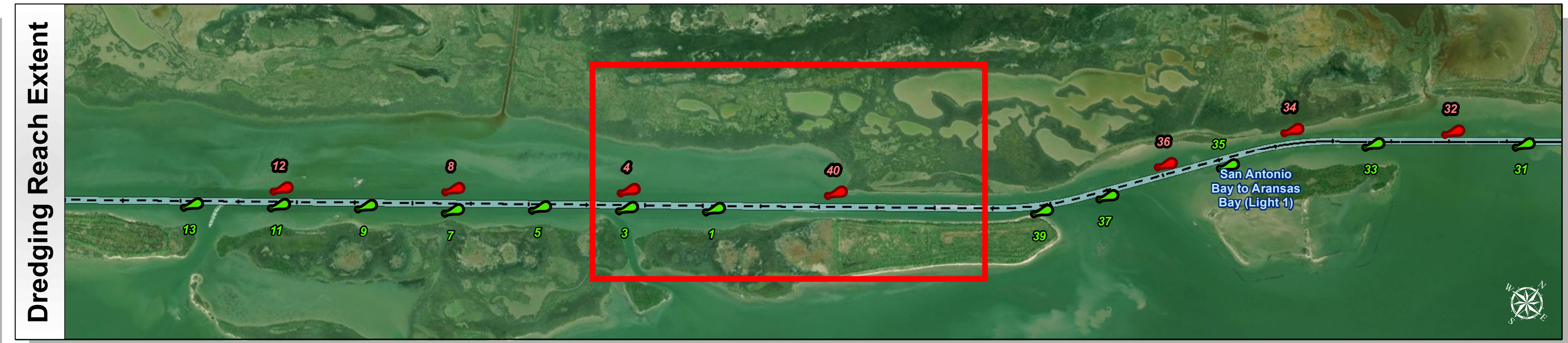
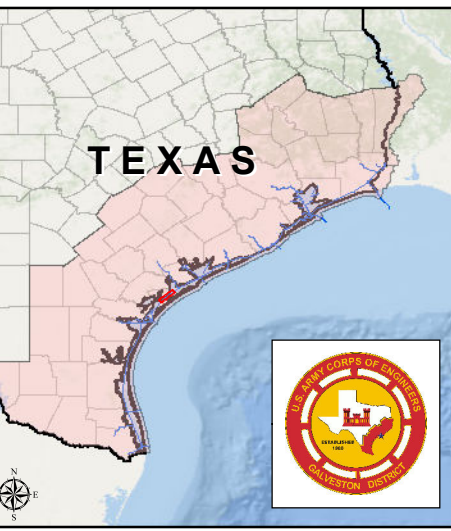
**Station: 1121+000 to 1178+000**  
GIWW  
, TEXAS



# Gulf Intracoastal Waterway: San Antonio Bay to Aransas Bay (Light 1)



U.S. Army Corps of Engineers  
Galveston District



<b>Channel Features</b>	<b>Aids to Navigation</b>	<b>MLLW</b>
— Channel Toe	Green Side Aids	
- - - Channel Center Line	Red Side Aids	<b>NOAA Bathymetry (DREDGING REACH EXTENT)</b>
— Channel Station Lines	Lights	0 - 10   10 - 15   15 - 20   20 - 25   25 - 30   30 - 50
↔ Channel Dimensions		

**NOTES:**

- HORIZONTAL COORDINATES ARE REFERENCED TO TEXAS STATE PLANE COORDINATE SYSTEM, SOUTH CENTRAL ZONE NAD83 US SURVEY FEET.
- ELEVATIONS ARE REFERENCED TO MEAN LOWER LOW TIDE (MLLW) DATUM.
- THIS PROJECT WAS DESIGNED BY THE GALVESTON DISTRICT OF THE U.S. ARMY CORPS OF ENGINEERS. THE INITIALS AND SIGNATURES AND REGISTRATION DESIGNATIONS OF INDIVIDUALS APPEAR ON THESE PROJECT DOCUMENTS WITHIN THE SCOPE OF THEIR EMPLOYMENT AS REQUIRED BY ER1110-1-8152.
- THE INFORMATION DEPICTED ON THIS SURVEY MAP REPRESENTS THE RESULTS OF SURVEYS MADE ON THE DATES INDICATED AND CAN ONLY BE CONSIDERED AS INDICATING THE GENERAL CONDITIONS EXISTING AT THAT TIME. THESE CONDITIONS ARE SUBJECT TO RAPID CHANGE DUE TO SHOALING EVENTS. A PRUDENT MARINER SHOULD NOT RELY EXCLUSIVELY ON THE INFORMATION PROVIDED HERE. REQUIRED BY 33 CFR 209.325
- FOR THE MOST UP TO DATE INFORMATION PLEASE CHECK OUR WEBSITE AT: [HTTP://WWW.SWG.USACE.ARMY.MIL/MISSIONS/NAVIGATION/HYDROGRAPHICSURVEYS/](http://www.swg.usace.army.mil/missions/navigation/hydrographicsurveys/)
- NOAA BATHYMETRY CONTOURS PRODUCED FROM HISTORIC BATHYMETRIC (HYDROGRAPHIC) SURVEYS CONDUCTED BY THE NOAA NATIONAL OCEAN SERVICE COAST SURVEY, AVAILABLE FROM THE NATIONAL GEOPHYSICAL DATA CENTER. SURVEYS VARY AS TO SOUNDING DENSITY, ACCURACY OF DEPTH, ACCURACY OF NAVIGATION, ZERO DATUM, DATE OF SURVEY AND TYPE OF INSTRUMENTATION.

Service Layer Credits: Source: Esri, DigitalGlobe, GeoEye, Earthstar Geographics, CNES/Airbus DS, USDA, USGS, AeroGRID, IGN, and the GIS User Community  
Sources: Esri, HERE, Garmin, Intermap, Increment P Corp., GEBCO, USGS, FAO, NPS, NRCAN, GeoBase, IGN, Kadaster NL, Ordnance Survey, Esri Japan, METI, Esri China (Hong Kong), (c) OpenStreetMap contributors, and the GIS User Community  
Esri, Garmin, GEBCO, NOAA NGDC, and other contributors



Coordinate System: NAD 1983 StatePlane Texas South Central FIPS 4204 Feet  
Projection: Lambert Conformal Conic / Datum: North American 1983

Dredging Reach Extent  
0 0.3 0.6 1.2 Miles

Hydrographic Survey Extent  
0 260 520 1,040 Feet

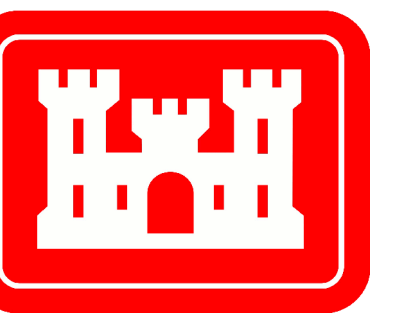
Survey Date(s): 25 November 2019	Authorized Depth: -14ft.
Page: 163 of 190	Side Slope Ratio: (Rise : Run)
Map:	Additional Imagery: © DigitalGlobe Inc.
Scale: 1:3,000	Print Date: 11/25/2019
Mapped by: m3odm/mg	
Additional Info:	

**HYDROGRAPHIC SURVEY**  
U.S. ARMY ENGINEER DISTRICT  
CORPS OF ENGINEERS  
GALVESTON, TEXAS

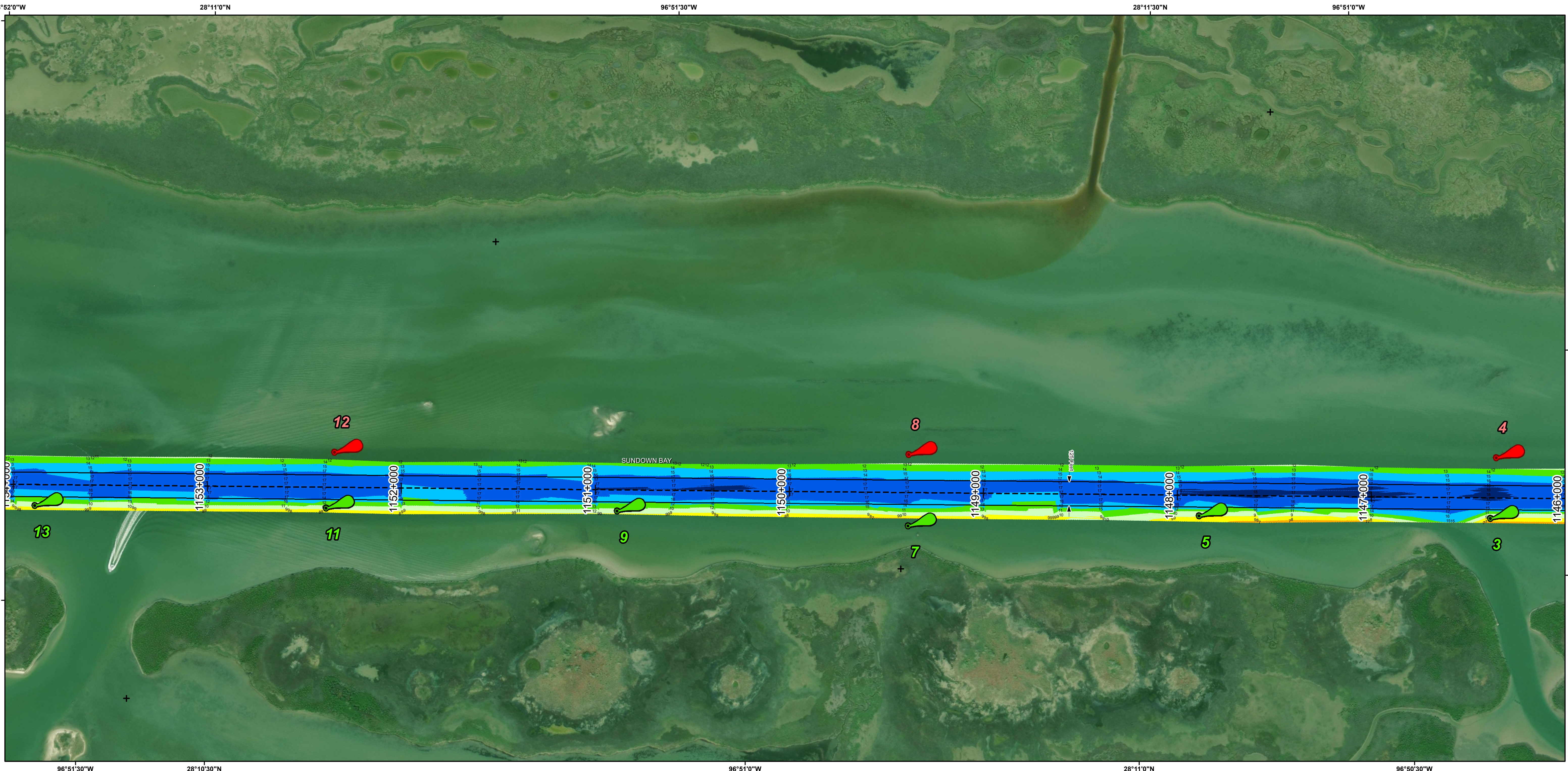
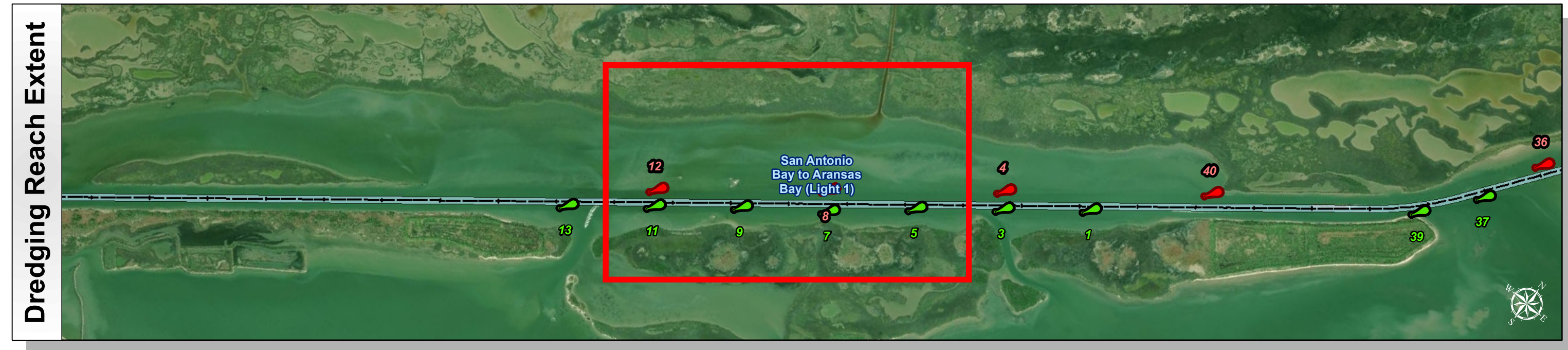
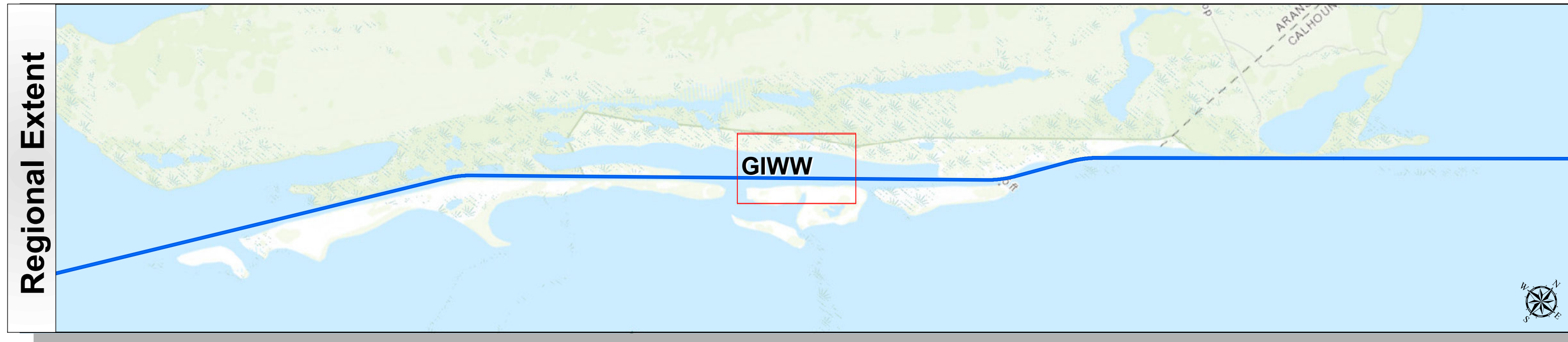
**Station: 1121+000 to 1178+000**  
GIWW  
, TEXAS



# Gulf Intracoastal Waterway: San Antonio Bay to Aransas Bay (Light 1)



U.S. Army Corps of Engineers  
Galveston District



**Channel Features**

- Channel Toe
- Channel Center Line
- Channel Station Lines
- Channel Dimensions

**Aids to Navigation**

- Green Side Aids
- Red Side Aids
- Lights

**MLLW**

0 - 4  
4 - 6  
6 - 8  
8 - 10  
10 - 12  
12 - 14  
14 - 16  
16 - 18  
< 18

**NOAA Bathymetry (DREDGING REACH EXTENT)**

0 - 10  
10 - 15  
15 - 20  
20 - 25  
25 - 30  
30 - 50

**NOTES:**

- HORIZONTAL COORDINATES ARE REFERENCED TO TEXAS STATE PLANE COORDINATE SYSTEM, SOUTH CENTRAL ZONE NAD83 US SURVEY FEET.
- ELEVATIONS ARE REFERENCED TO MEAN LOWER LOW TIDE (MLLW) DATUM.
- THIS PROJECT WAS DESIGNED BY THE GALVESTON DISTRICT OF THE U.S. ARMY CORPS OF ENGINEERS. THE INITIALS AND SIGNATURES AND REGISTRATION DESIGNATIONS OF INDIVIDUALS APPEAR ON THESE PROJECT DOCUMENTS WITHIN THE SCOPE OF THEIR EMPLOYMENT AS REQUIRED BY ER1110-1-8152.

- THE INFORMATION DEPICTED ON THIS SURVEY MAP REPRESENTS THE RESULTS OF SURVEYS MADE ON THE DATES INDICATED AND CAN ONLY BE CONSIDERED AS INDICATING THE GENERAL CONDITIONS EXISTING AT THAT TIME. THESE CONDITIONS ARE SUBJECT TO RAPID CHANGE DUE TO SHOALING EVENTS. A PRUDENT MARINER SHOULD NOT RELY EXCLUSIVELY ON THE INFORMATION PROVIDED HERE. REQUIRED BY 33 CFR 209.325
- FOR THE MOST UP TO DATE INFORMATION PLEASE CHECK OUR WEBSITE AT: [HTTP://WWW.SWG.USACE.ARMY.MIL/MISSIONS/NAVIGATION/HYDROGRAPHICSURVEYS/](http://www.swg.usace.army.mil/missions/navigation/hydrographicsurveys/)
- NOAA BATHYMETRY CONTOURS PRODUCED FROM HISTORIC BATHYMETRIC (HYDROGRAPHIC) SURVEYS CONDUCTED BY THE NOAA NATIONAL OCEAN SERVICE/COAST SURVEY, AVAILABLE FROM THE NATIONAL GEOPHYSICAL DATA CENTER. SURVEYS VARY AS TO SOUNDING DENSITY, ACCURACY OF DEPTH, ACCURACY OF NAVIGATION, ZERO DATUM, DATE OF SURVEY AND TYPE OF INSTRUMENTATION.

Service Layer Credits: Source: Esri, DigitalGlobe, GeoEye, Earthstar Geographics, CNES/Airbus DS, USDA, USGS, AeroGRID, IGN, and the GIS User Community  
Sources: Esri, HERE, Garmin, Intermap, increment P Corp., GEBCO, USGS, FAO, NPS, NRCAN, GeoBase, IGN, Kadaster NL, Ordnance Survey, Esri Japan, METI, Esri China (Hong Kong), (c) OpenStreetMap contributors, and the GIS User Community  
Esri, Garmin, GEBCO, NOAA NGDC, and other contributors



Coordinate System: NAD 1983 StatePlane Texas South Central FIPS 4204 Feet  
Projection: Lambert Conformal Conic /Datum: North American 1983

**Dredging Reach Extent**

0 0.3 0.6 1.2 Miles

**Hydrographic Survey Extent**

0 260 520 1,040 Feet

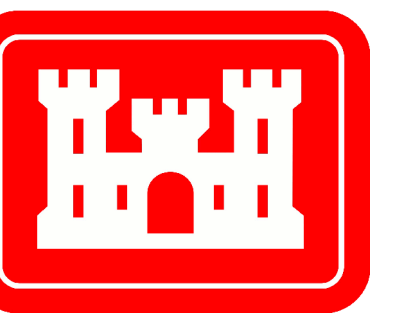
Survey Date(s): 25 November 2019	Authorized Depth: -14ft.
Page: 164 of 190	Side Slope Ratio: (Rise : Run)
Map:	Additional Imagery: © DigitalGlobe Inc.
Scale: 1:3,000	Print Date: 11/25/2019
Mapped by: m3odm/m	
Additional Info:	

**HYDROGRAPHIC SURVEY**  
U.S. ARMY ENGINEER DISTRICT  
CORPS OF ENGINEERS  
GALVESTON, TEXAS

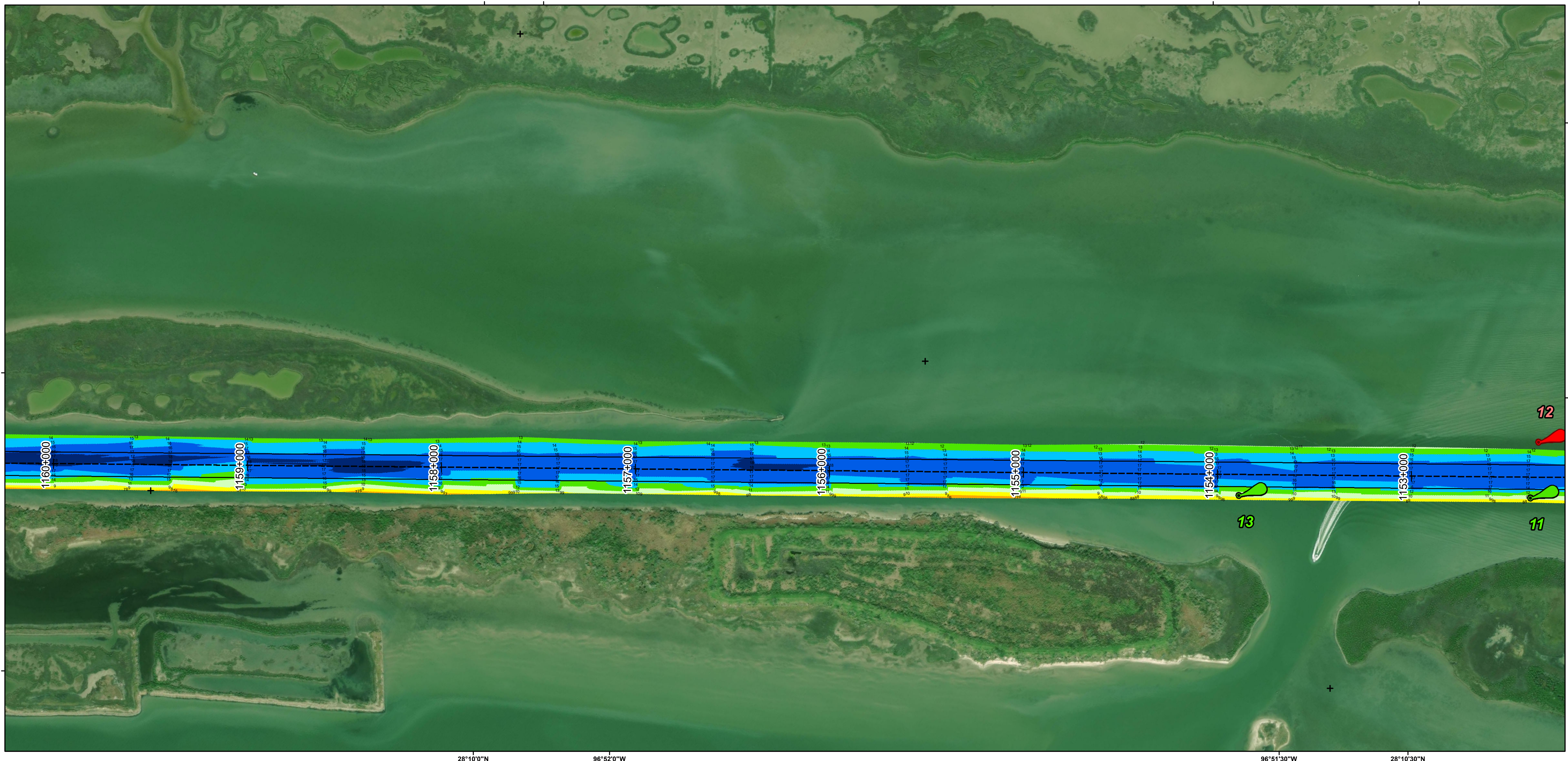
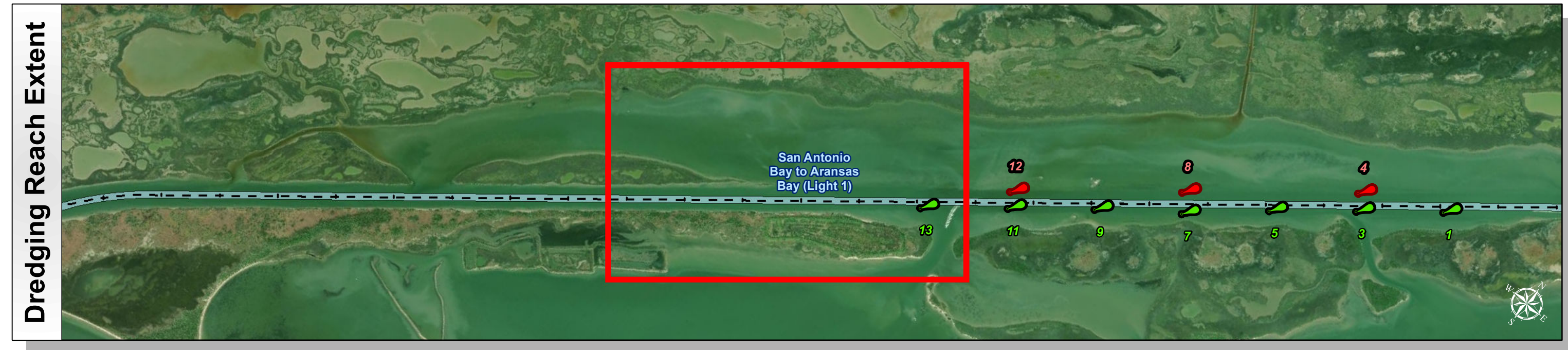
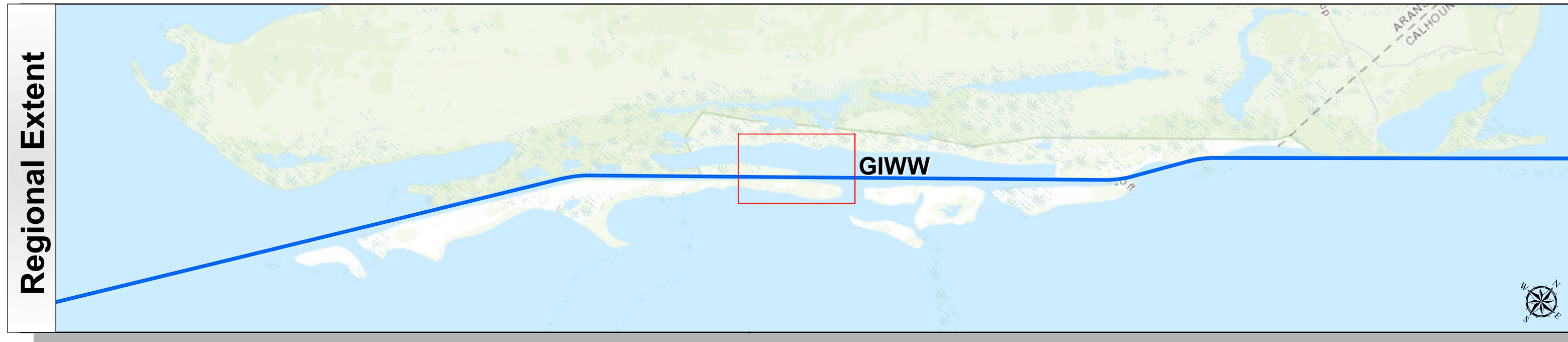
**Station: 1121+000 to 1178+000**  
GIWW  
, TEXAS



# Gulf Intracoastal Waterway: San Antonio Bay to Aransas Bay (Light 1)



U.S. Army Corps of Engineers  
Galveston District



Survey Date(s): 25 November 2019	Authorized Depth: -14ft.
Page: 165 of 190	Side Slope Ratio: (Rise : Run)
Map:	Additional Imagery: © DigitalGlobe Inc.
Scale: 1:3,000	Print Date: 11/25/2019
Mapped by: m3odmmg	
Additional Info:	

**Channel Features**

- Channel Toe
- Channel Center Line
- Channel Station Lines
- Channel Dimensions

**Aids to Navigation**

- Green Side Aids
- Red Side Aids
- Lights

**MLLW**

0 - 4  
4 - 6  
6 - 8  
8 - 10  
10 - 12  
12 - 14  
14 - 16  
16 - 18  
< 18

**NOAA Bathymetry (DREDGING REACH EXTENT)**

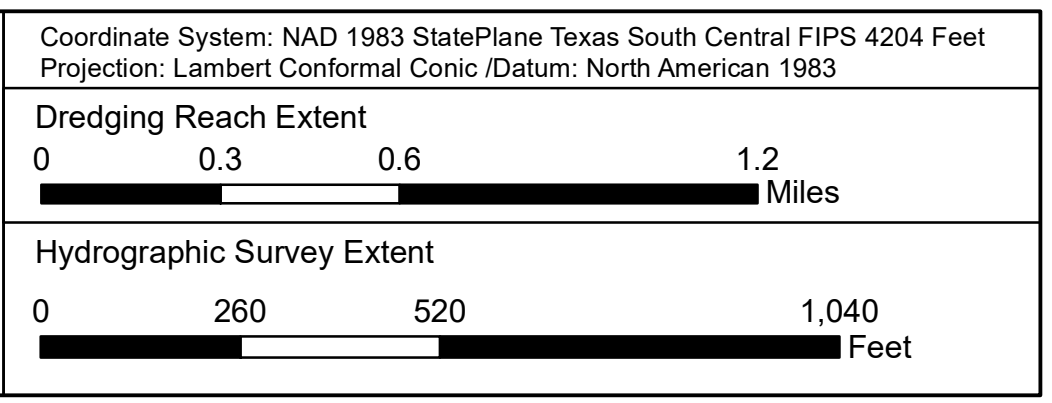
0 - 10 10 - 15 15 - 20 20 - 25 25 - 30 30 - 50

**NOTES:**

- HORIZONTAL COORDINATES ARE REFERENCED TO TEXAS STATE PLANE COORDINATE SYSTEM, SOUTH CENTRAL ZONE NAD83 US SURVEY FEET.
- ELEVATIONS ARE REFERENCED TO MEAN LOWER LOW TIDE (MLLW) DATUM.
- THIS PROJECT WAS DESIGNED BY THE GALVESTON DISTRICT OF THE U.S. ARMY CORPS OF ENGINEERS. THE INITIALS AND SIGNATURES AND REGISTRATION DESIGNATIONS OF INDIVIDUALS APPEAR ON THESE PROJECT DOCUMENTS WITHIN THE SCOPE OF THEIR EMPLOYMENT AS REQUIRED BY ER1110-1-8152.

- THE INFORMATION DEPICTED ON THIS SURVEY MAP REPRESENTS THE RESULTS OF SURVEYS MADE ON THE DATES INDICATED AND CAN ONLY BE CONSIDERED AS INDICATING THE GENERAL CONDITIONS EXISTING AT THAT TIME. THESE CONDITIONS ARE SUBJECT TO RAPID CHANGE DUE TO SHOALING EVENTS. A PRUDENT MARINER SHOULD NOT RELY EXCLUSIVELY ON THE INFORMATION PROVIDED HERE. REQUIRED BY 33 CFR 209.325
- FOR THE MOST UP TO DATE INFORMATION PLEASE CHECK OUR WEBSITE AT: [HTTP://WWW.SWG.USACE.ARMY.MIL/MISSIONS/NAVIGATION/HYDROGRAPHICS/SURVEYS/](http://www.swg.usace.army.mil/missions/navigation/hydrographics/surveys/)
- NOAA BATHYMETRY CONTOURS PRODUCED FROM HISTORIC BATHYMETRIC (HYDROGRAPHIC) SURVEYS CONDUCTED BY THE NOAA NATIONAL OCEAN SERVICE COAST SURVEY, AVAILABLE FROM THE NATIONAL GEOPHYSICAL DATA CENTER. SURVEYS VARY AS TO SOUNDING DENSITY, ACCURACY OF DEPTH, ACCURACY OF NAVIGATION, ZERO DATUM, DATE OF SURVEY AND TYPE OF INSTRUMENTATION.

Service Layer Credits: Source: Esri, DigitalGlobe, GeoEye, Earthstar Geographics, CNES/Airbus DS, USDA, USGS, AeroGRID, IGN, and the GIS User Community  
Sources: Esri, HERE, Garmin, Intermap, Increment P Corp., GEBCO, USGS, FAO, NPS, NRCAN, GeoBase, IGN, Kadaster NL, Ordnance Survey, Esri Japan, METI, Esri China (Hong Kong), (c) OpenStreetMap contributors, and the GIS User Community  
Esri, Garmin, GEBCO, NOAA NGDC, and other contributors

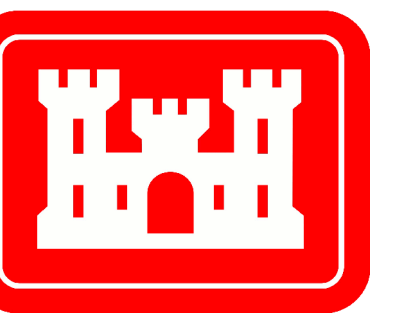


**HYDROGRAPHIC SURVEY**  
U.S. ARMY ENGINEER DISTRICT  
CORPS OF ENGINEERS  
GALVESTON, TEXAS

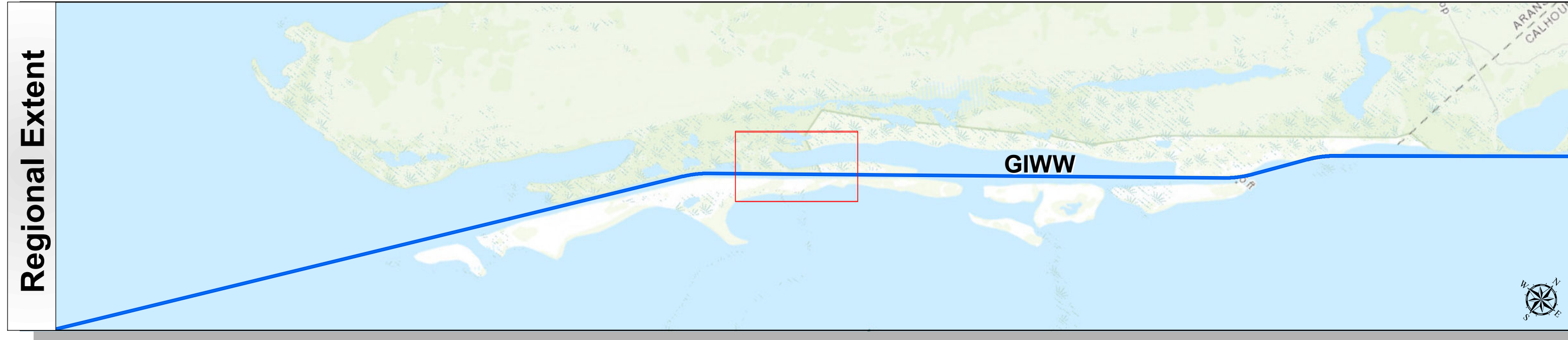
**Station: 1121+000 to 1178+000**  
GIWW  
, TEXAS



# Gulf Intracoastal Waterway: San Antonio Bay to Aransas Bay (Light 1)



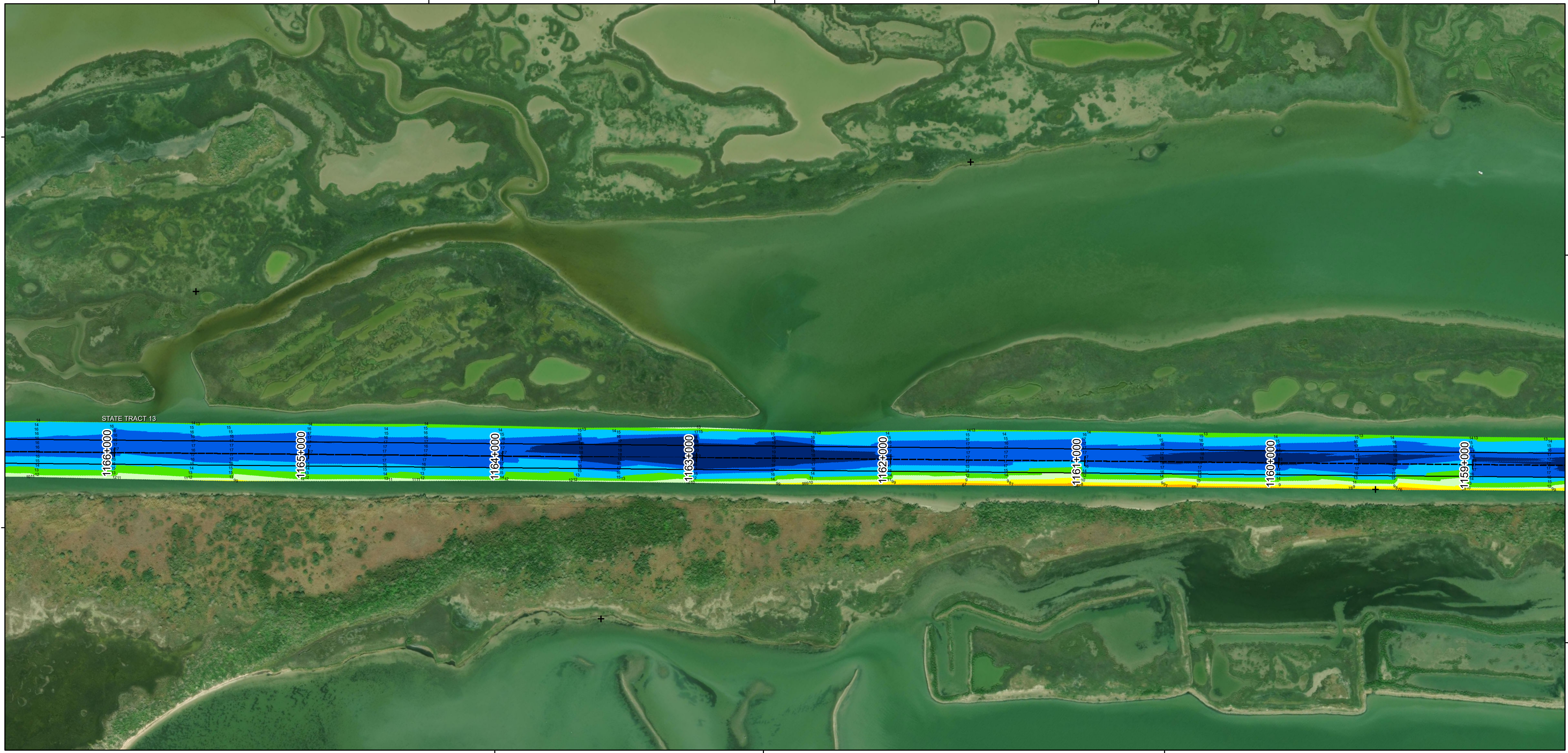
U.S. Army Corps of Engineers  
Galveston District



Regional Extent



Dredging Reach Extent



28°30'0"N

96°53'30"W

96°53'30"W

28°10'0"N

96°53'0"W

96°52'30"W

28°10'0"N

Channel Features	Aids to Navigation	MLLW
<ul style="list-style-type: none"> <li>Channel Toe</li> <li>Channel Center Line</li> <li>Channel Station Lines</li> <li>Channel Dimensions</li> </ul>	<ul style="list-style-type: none"> <li>Green Side Aids</li> <li>Red Side Aids</li> <li>Lights</li> </ul>	<p>NOAA Bathymetry (DREDGING REACH EXTENT)</p>

NOTES:

- HORIZONTAL COORDINATES ARE REFERENCED TO TEXAS STATE PLANE COORDINATE SYSTEM, SOUTH CENTRAL ZONE NAD83 US SURVEY FEET.
- ELEVATIONS ARE REFERENCED TO MEAN LOWER LOW TIDE (MLLW) DATUM.
- THIS PROJECT WAS DESIGNED BY THE GALVESTON DISTRICT OF THE U.S. ARMY CORPS OF ENGINEERS. THE INITIALS AND SIGNATURES AND REGISTRATION DESIGNATIONS OF INDIVIDUALS APPEAR ON THESE PROJECT DOCUMENTS WITHIN THE SCOPE OF THEIR EMPLOYMENT AS REQUIRED BY ER1110-1-8152.
- THE INFORMATION DEPICTED ON THIS SURVEY MAP REPRESENTS THE RESULTS OF SURVEYS MADE ON THE DATES INDICATED AND CAN ONLY BE CONSIDERED AS INDICATING THE GENERAL CONDITIONS EXISTING AT THAT TIME. THESE CONDITIONS ARE SUBJECT TO RAPID CHANGE DUE TO SHOALING EVENTS. A PRUDENT MARINER SHOULD NOT RELY EXCLUSIVELY ON THE INFORMATION PROVIDED HERE. REQUIRED BY 33 CFR 209.325
- FOR THE MOST UP TO DATE INFORMATION PLEASE CHECK OUR WEBSITE AT: [HTTP://WWW.SWG.USACE.ARMY.MIL/MISSIONS/NAVIGATION/HYDROGRAPHICSURVEYS/](http://www.swg.usace.army.mil/missions/navigation/hydrographicsurveys/)
- NOAA BATHYMETRY CONTOURS PRODUCED FROM HISTORIC BATHYMETRIC (HYDROGRAPHIC) SURVEYS CONDUCTED BY THE NOAA NATIONAL OCEAN SERVICE COAST SURVEY, AVAILABLE FROM THE NATIONAL GEOPHYSICAL DATA CENTER. SURVEYS VARY AS TO SOUNDING DENSITY, ACCURACY OF DEPTH, ACCURACY OF NAVIGATION, ZERO DATUM, DATE OF SURVEY AND TYPE OF INSTRUMENTATION.

Service Layer Credits: Source: Esri, DigitalGlobe, GeoEye, Earthstar Geographics, CNES/Airbus DS, USDA, USGS, AeroGRID, IGN, and the GIS User Community  
Sources: Esri, HERE, Garmin, Intermap, increment P Corp., GEBCO, USGS, FAO, NPS, NRCAN, GeoBase, IGN, Kadaster NL, Ordnance Survey, Esri Japan, METI, Esri China (Hong Kong), (c) OpenStreetMap contributors, and the GIS User Community  
Esri, Garmin, GEBCO, NOAA NGDC, and other contributors



Coordinate System: NAD 1983 StatePlane Texas South Central FIPS 4204 Feet  
Projection: Lambert Conformal Conic / Datum: North American 1983

Dredging Reach Extent  
0 0.3 0.6 1.2 Miles

Hydrographic Survey Extent  
0 260 520 1,040 Feet

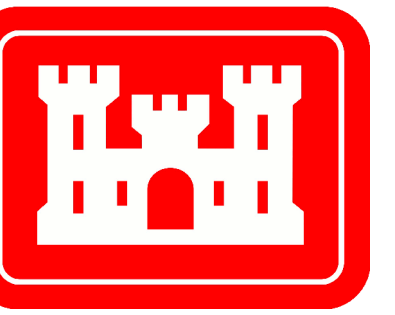
Survey Date(s): 25 November 2019	Authorized Depth: -14ft.
Page: 166 of 190	Side Slope Ratio: (Rise : Run)
Map:	Additional Imagery: © DigitalGlobe Inc.
Scale: 1:3,000	Print Date: 11/25/2019
Mapped by: m3odmmg	
Additional Info:	

**HYDROGRAPHIC SURVEY**  
U.S. ARMY ENGINEER DISTRICT  
CORPS OF ENGINEERS  
GALVESTON, TEXAS

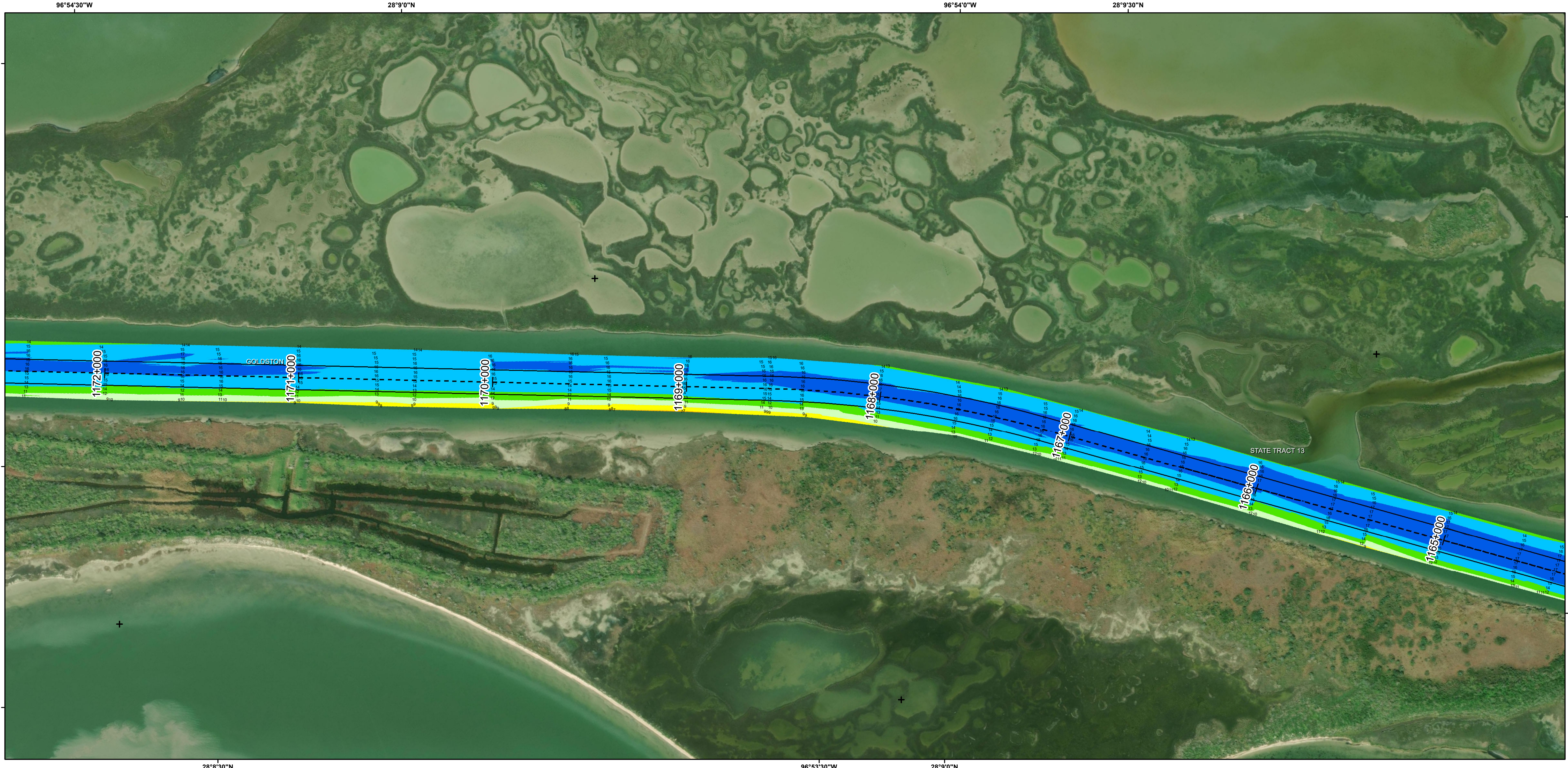
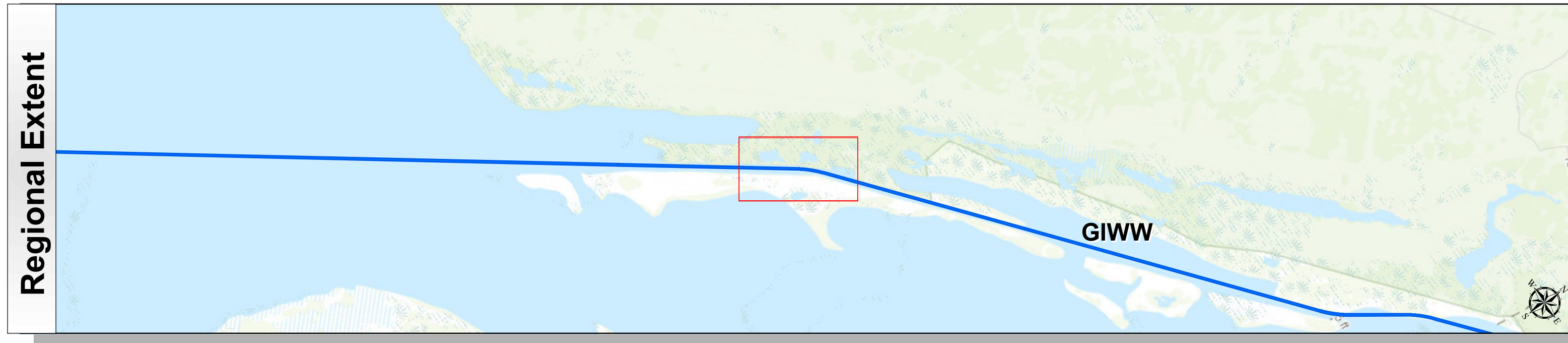
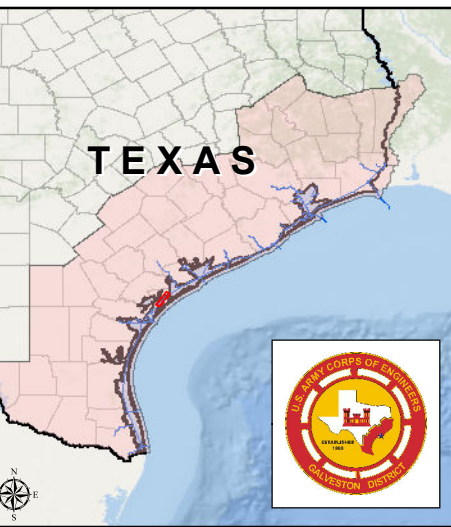
**Station: 1121+000 to 1178+000**  
GIWW  
, TEXAS



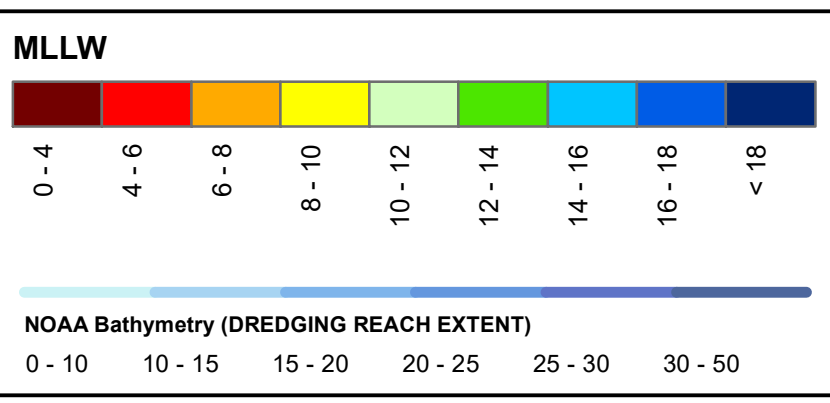
# Gulf Intracoastal Waterway: San Antonio Bay to Aransas Bay (Light 1)



U.S. Army Corps of Engineers  
Galveston District



Channel Features	
	Channel Toe
	Channel Center Line
	Channel Station Lines
	Channel Dimensions

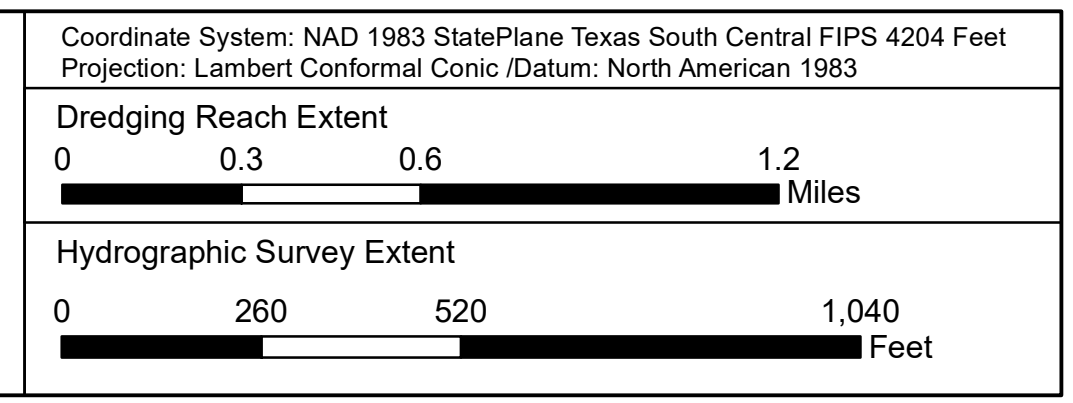
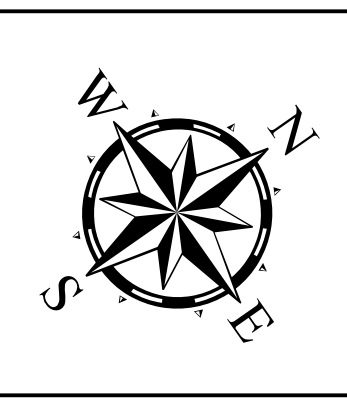


**NOTES:**

- HORIZONTAL COORDINATES ARE REFERENCED TO TEXAS STATE PLANE COORDINATE SYSTEM, SOUTH CENTRAL ZONE NAD83 US SURVEY FEET.
- ELEVATIONS ARE REFERENCED TO MEAN LOWER LOW TIDE (MLLW) DATUM.
- THIS PROJECT WAS DESIGNED BY THE GALVESTON DISTRICT OF THE U.S. ARMY CORPS OF ENGINEERS. THE INITIALS AND SIGNATURES AND REGISTRATION DESIGNATIONS OF INDIVIDUALS APPEAR ON THESE PROJECT DOCUMENTS WITHIN THE SCOPE OF THEIR EMPLOYMENT AS REQUIRED BY ER1110-1-8152.

- THE INFORMATION DEPICTED ON THIS SURVEY MAP REPRESENTS THE RESULTS OF SURVEYS MADE ON THE DATES INDICATED AND CAN ONLY BE CONSIDERED AS INDICATING THE GENERAL CONDITIONS EXISTING AT THAT TIME. THESE CONDITIONS ARE SUBJECT TO RAPID CHANGE DUE TO SHOALING EVENTS. A PRUDENT MARINER SHOULD NOT RELY EXCLUSIVELY ON THE INFORMATION PROVIDED HERE. REQUIRED BY 33 CFR 209.325
- FOR THE MOST UP TO DATE INFORMATION PLEASE CHECK OUR WEBSITE AT: [HTTP://WWW.SWG.USACE.ARMY.MIL/MISSIONS/NAVIGATION/HYDROGRAPHICS/SURVEYS/](http://www.swg.usace.army.mil/missions/navigation/hydrographics/surveys/)
- NOAA BATHYMETRY CONTOURS PRODUCED FROM HISTORIC BATHYMETRIC (HYDROGRAPHIC) SURVEYS CONDUCTED BY THE NOAA NATIONAL OCEAN SERVICE COAST SURVEY, AVAILABLE FROM THE NATIONAL GEOPHYSICAL DATA CENTER. SURVEYS VARY AS TO SOUNDING DENSITY, ACCURACY OF DEPTH, ACCURACY OF NAVIGATION, ZERO DATUM, DATE OF SURVEY AND TYPE OF INSTRUMENTATION.

Service Layer Credits: Source: Esri, DigitalGlobe, GeoEye, Earthstar Geographics, CNES/Airbus DS, USDA, USGS, AeroGRID, IGN, and the GIS User Community  
Sources: Esri, HERE, Garmin, Intermap, increment P Corp., GEBCO, USGS, FAO, NPS, NRCAN, GeoBase, IGN, Kadaster NL, Ordnance Survey, Esri Japan, METI, Esri China (Hong Kong), (c) OpenStreetMap contributors, and the GIS User Community  
Esri, Garmin, GEBCO, NOAA NGDC, and other contributors



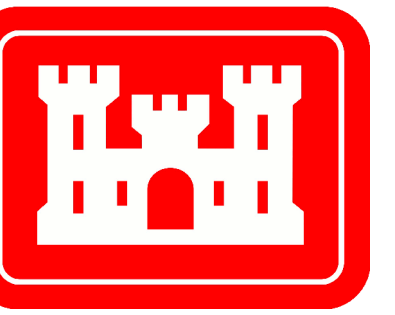
Survey Date(s): 25 November 2019	Authorized Depth: -14ft.
Page: 167 of 190	Map: Side Slope Ratio: (Rise : Run)
Scale: 1:3,000	Additional Imagery: © DigitalGlobe Inc.
Mapped by: m3odmnm	Print Date: 11/25/2019
Additional Info:	

**HYDROGRAPHIC SURVEY**  
U.S. ARMY ENGINEER DISTRICT  
CORPS OF ENGINEERS  
GALVESTON, TEXAS

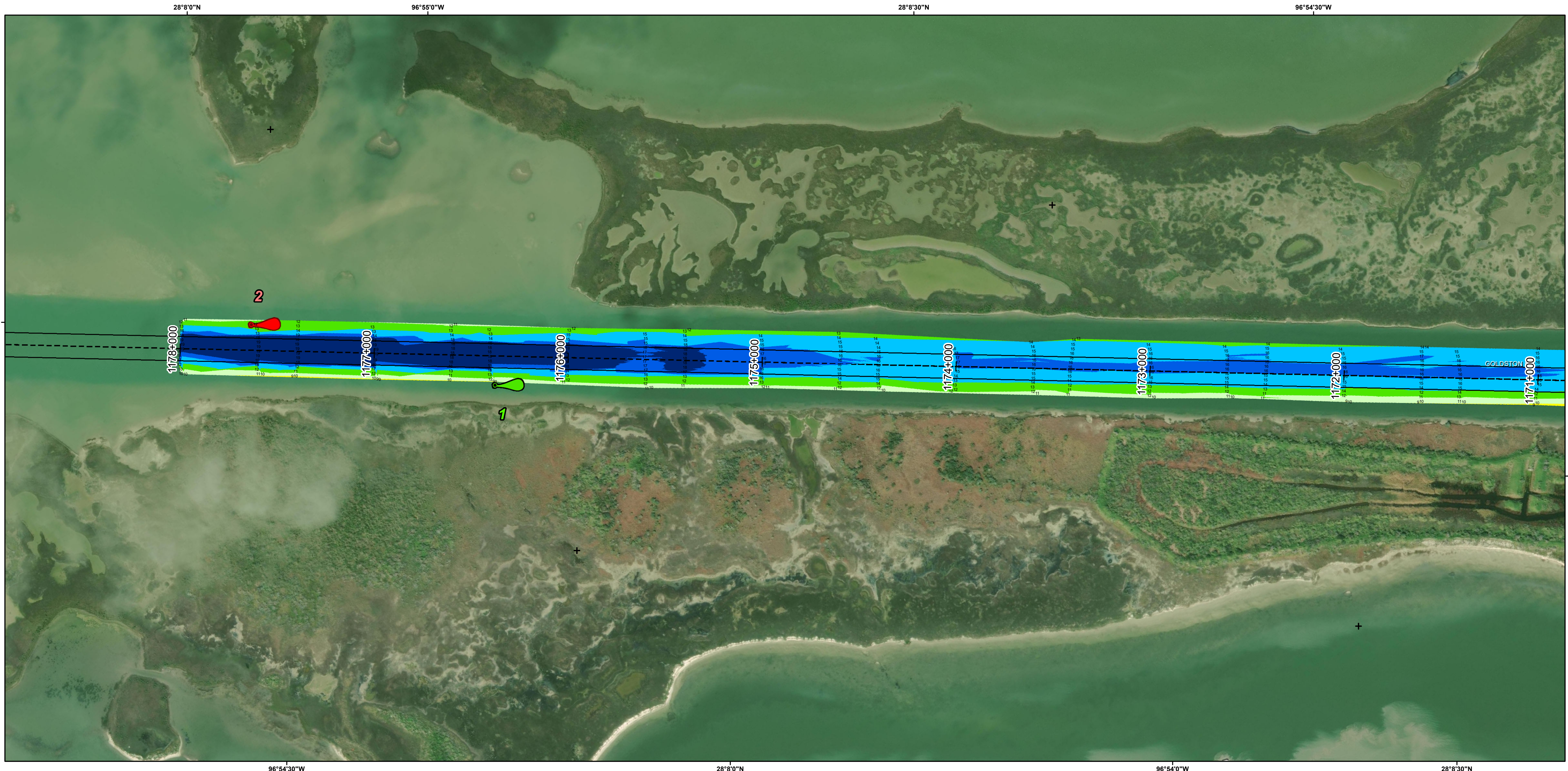
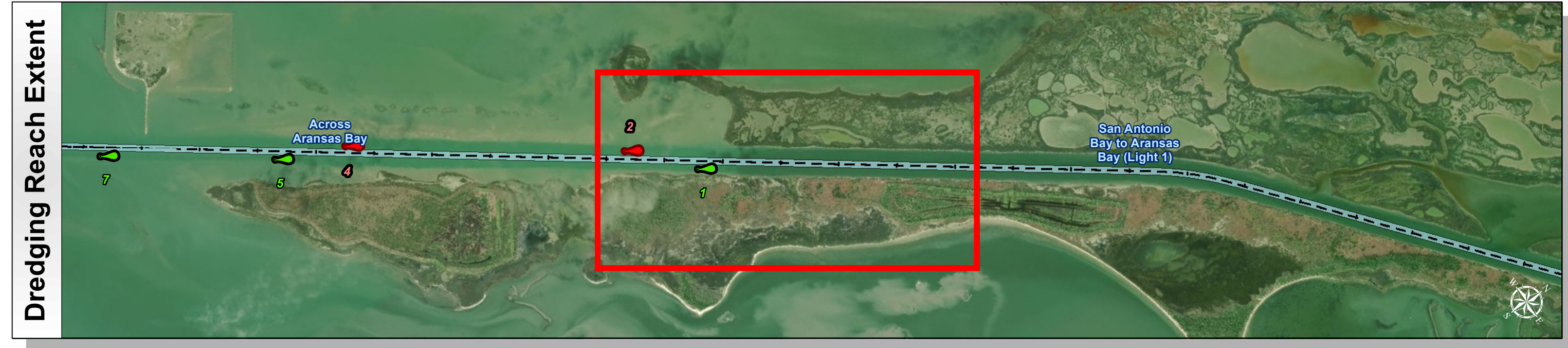
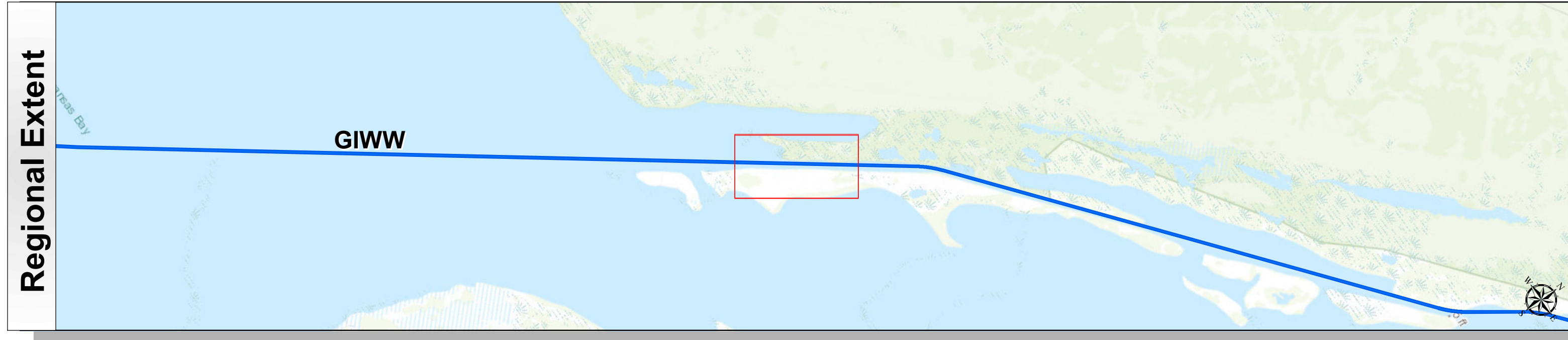
**Station: 1121+000 to 1178+000**  
GIWW  
, TEXAS



# Gulf Intracoastal Waterway: San Antonio Bay to Aransas Bay (Light 1)



U.S. Army Corps of Engineers  
Galveston District



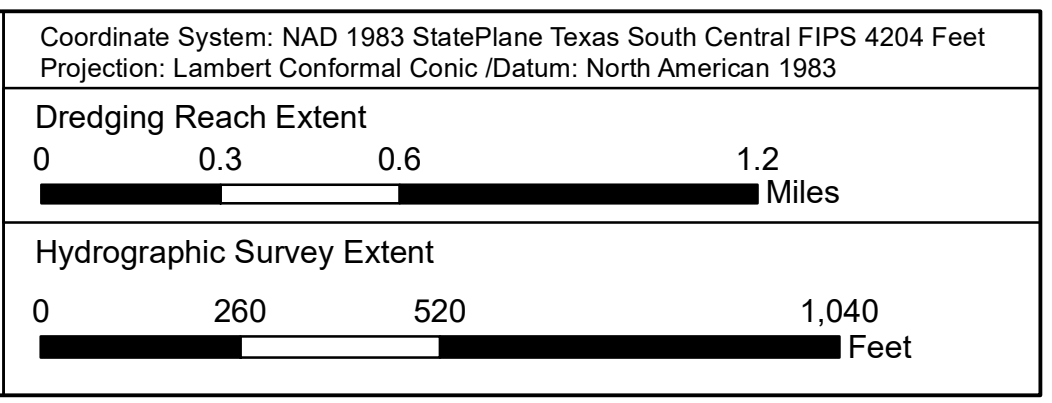
Channel Features	Aids to Navigation	MLLW
<ul style="list-style-type: none"> <li>Channel Toe</li> <li>Channel Center Line</li> <li>Channel Station Lines</li> <li>Channel Dimensions</li> </ul>	<ul style="list-style-type: none"> <li>Green Side Aids</li> <li>Red Side Aids</li> <li>Lights</li> </ul>	<p>0 - 4 4 - 6 6 - 8 8 - 10 10 - 12 12 - 14 14 - 16 16 - 18 &lt; 18</p> <p>NOAA Bathymetry (DREDGING REACH EXTENT)</p> <p>0 - 10   10 - 15   15 - 20   20 - 25   25 - 30   30 - 50</p>

NOTES:

- HORIZONTAL COORDINATES ARE REFERENCED TO TEXAS STATE PLANE COORDINATE SYSTEM, SOUTH CENTRAL ZONE NAD83 US SURVEY FEET.
- ELEVATIONS ARE REFERENCED TO MEAN LOWER LOW TIDE (MLLW) DATUM.
- THIS PROJECT WAS DESIGNED BY THE GALVESTON DISTRICT OF THE U.S. ARMY CORPS OF ENGINEERS. THE INITIALS AND SIGNATURES AND REGISTRATION DESIGNATIONS OF INDIVIDUALS APPEAR ON THESE PROJECT DOCUMENTS WITHIN THE SCOPE OF THEIR EMPLOYMENT AS REQUIRED BY ER1110-1-8152.

- THE INFORMATION DEPICTED ON THIS SURVEY MAP REPRESENTS THE RESULTS OF SURVEYS MADE ON THE DATES INDICATED AND CAN ONLY BE CONSIDERED AS INDICATING THE GENERAL CONDITIONS EXISTING AT THAT TIME. THESE CONDITIONS ARE SUBJECT TO RAPID CHANGE DUE TO SHOALING EVENTS. A PRUDENT MARINER SHOULD NOT RELY EXCLUSIVELY ON THE INFORMATION PROVIDED HERE. REQUIRED BY 33 CFR 209.325
- FOR THE MOST UP TO DATE INFORMATION PLEASE CHECK OUR WEBSITE AT: [HTTP://WWW.SWG.USACE.ARMY.MIL/MISSIONS/NAVIGATION/HYDROGRAPHIC-SURVEYS/](http://www.swg.usace.army.mil/missions/navigation/hydrographic-surveys/)
- NOAA BATHYMETRY CONTOURS PRODUCED FROM HISTORIC BATHYMETRIC (HYDROGRAPHIC) SURVEYS CONDUCTED BY THE NOAA NATIONAL OCEAN SERVICE COAST SURVEY, AVAILABLE FROM THE NATIONAL GEOPHYSICAL DATA CENTER. SURVEYS VARY AS TO SOUNDING DENSITY, ACCURACY OF DEPTH, ACCURACY OF NAVIGATION, ZERO DATUM, DATE OF SURVEY AND TYPE OF INSTRUMENTATION.

Service Layer Credits: Source: Esri, DigitalGlobe, GeoEye, Earthstar Geographics, CNES/Airbus DS, USDA, USGS, AeroGRID, IGN, and the GIS User Community  
Sources: Esri, HERE, Garmin, Intermap, Increment P Corp., GEBCO, USGS, FAO, NPS, NRCAN, GeoBase, IGN, Kadaster NL, Ordnance Survey, Esri Japan, METI, Esri China (Hong Kong), (c) OpenStreetMap contributors, and the GIS User Community  
Esri, Garmin, GEBCO, NOAA NGDC, and other contributors



Survey Date(s): 25 November 2019	Authorized Depth: -14ft.
Page: 168 of 190	Side Slope Ratio: (Rise : Run)
Map:	Additional Imagery: © DigitalGlobe Inc.
Scale: 1:3,000	Print Date: 11/25/2019
Mapped by: m3odmnm	
Additional Info:	

**HYDROGRAPHIC SURVEY**  
U.S. ARMY ENGINEER DISTRICT  
CORPS OF ENGINEERS  
GALVESTON, TEXAS

**Station: 1121+000 to 1178+000**  
GIWW  
, TEXAS