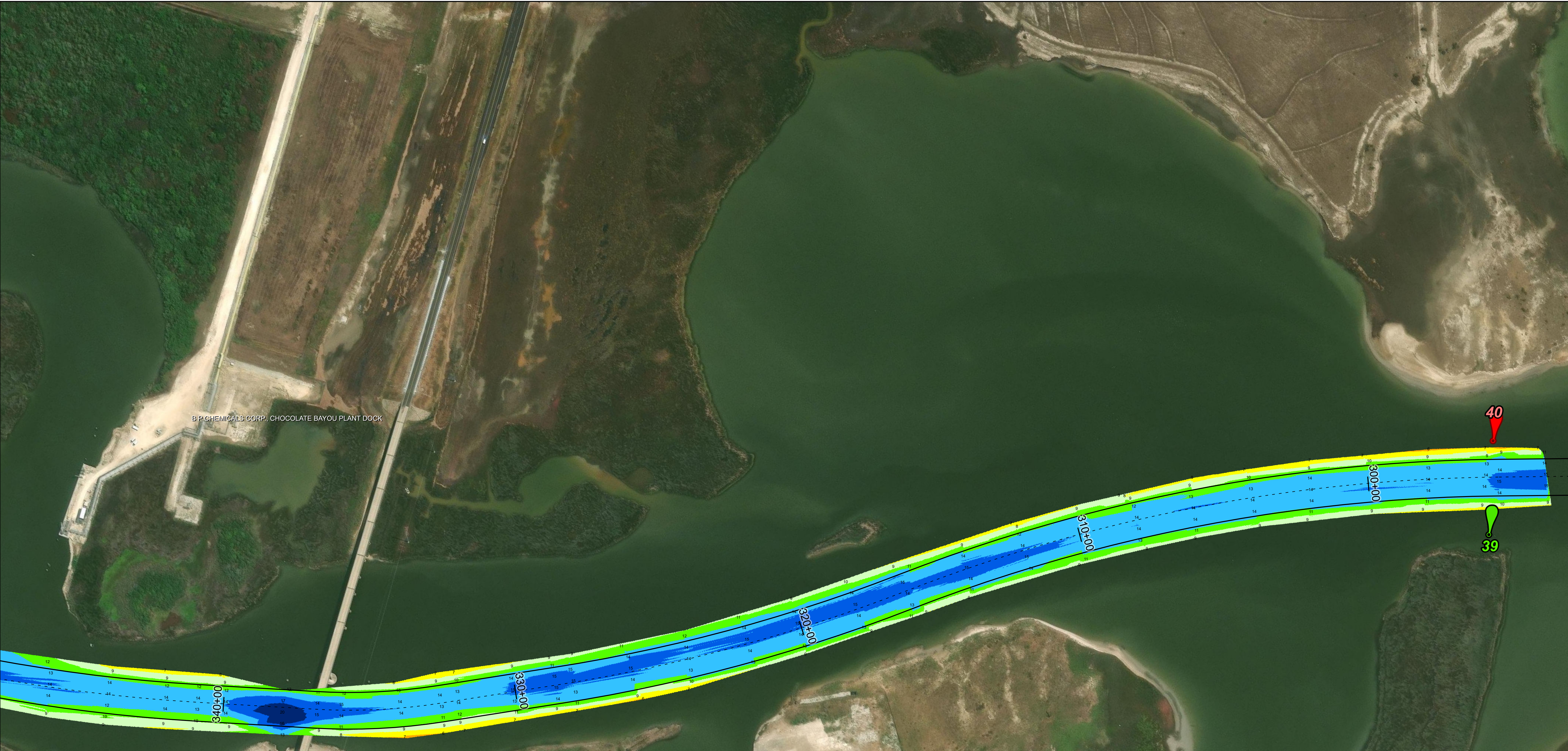
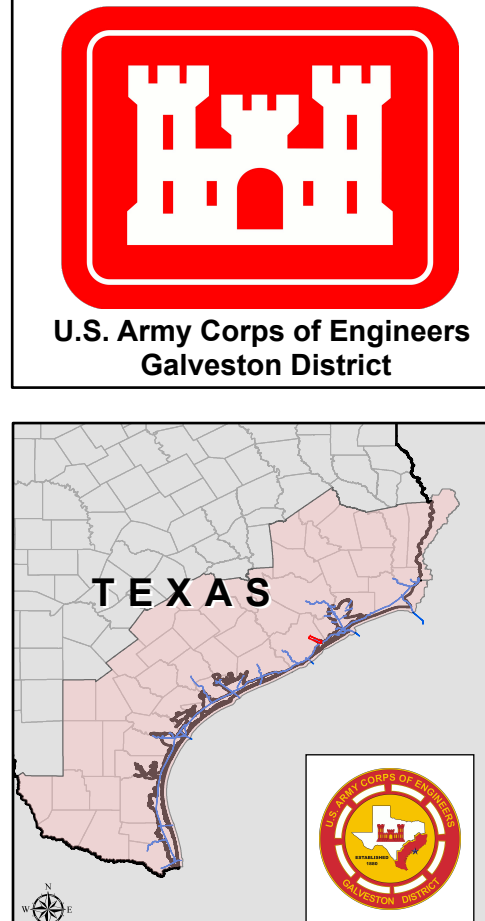
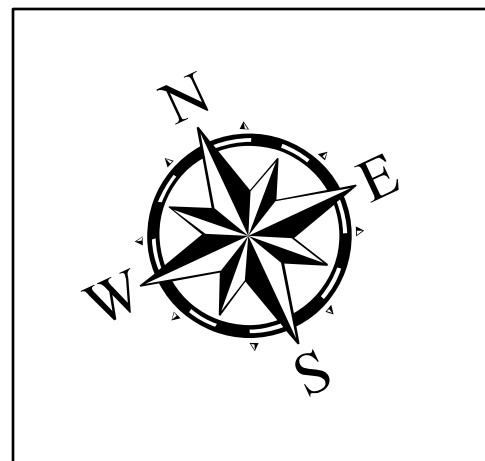


Chocolate Bayou Channel: Land Cut



Latest Survey Collection Date: 31 March 2025	Authorized Depth: -13ft.
Document Page: 1 of 3	Side Slope Ratio: (Rise : Run)
Scale: 1:2,000	PDF Print Date: 4/23/2025
Mapped by: m3odnbdg	
Additional Imagery info:	



Channel Features	Aids to Navigation	MLLW
<ul style="list-style-type: none"> Channel Center Line Channel Toe Channel Dimensions 	<ul style="list-style-type: none"> Green Side Aids Red Side Aids Lights 	<ul style="list-style-type: none"> 0 - 3 3 - 5 5 - 7 7 - 9 9 - 11 11 - 13 13 - 15 15 - 17 < 17

NOTES:
 1. Horizontal coordinates are referenced to Texas State Plane Coordinate System, South Central Zone NAD83 US Survey Feet.
 2. Elevations are referenced to Mean Lower Low Water (MLLW) datum.
 3. This project was designed by the Galveston District of the U.S. Army Corps of Engineers. The initials and signatures and registration designations of individuals appear on these project documents within the scope of their employment as required by er1110-1-8132.
 4. The information depicted on this survey map represents the results of surveys made on the dates indicated and can only be considered as indicating the general conditions existing at that time. These conditions are subject to rapid change due to shoaling events. A prudent mariner should not rely exclusively on the information provided here. Required by 33 CFR 209.325
 5. For the most up to date information please check our website at: <http://www.svg.usace.army.mil/Missions/Navigation/HydrographicSurveys/>
 Service Layer Credits: World Imagery: Source: Esri, Maxar, Earthstar Geographics, and the GIS User Community
 World Imagery: Maxar, Microsoft
 World Topographic Map: Brazoria County, Texas Parks & Wildlife, Esri, HERE, Garmin, INCREMENT P, USGS, METINASA, NGA, EPA, USDA

Additional Combined Survey Dates and Stationing:
 COMB_SURV_INFO_HERE

Coordinate System: NAD 1983 StatePlane Texas South Central FIPS 4204 Feet
 Projection: Lambert Conformal Conic

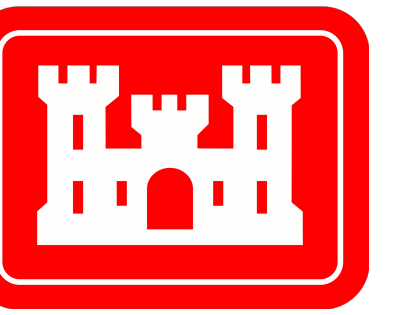
Dredging Reach Extent
 0 0.2 0.4 0.8 Miles

Hydrographic Survey Extent
 0 170 340 680 Feet

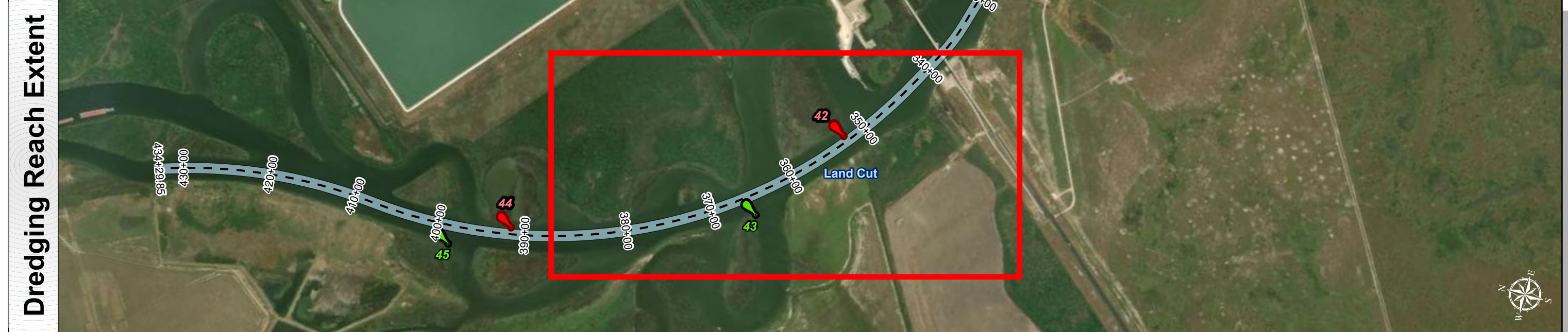
HYDROGRAPHIC SURVEY
 U.S. ARMY ENGINEER DISTRICT
 CORPS OF ENGINEERS
 GALVESTON, TEXAS

Station: 295+58 to 434+29.85
CHOCOLATE BAYOU CHANNEL
 Land Cut

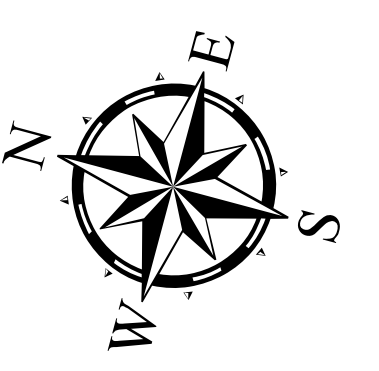
Chocolate Bayou Channel: Land Cut



U.S. Army Corps of Engineers
Galveston District



Latest Survey Collection Date: 31 March 2025	Authorized Depth: -13ft.
Document Page: 2 of 3	Side Slope Ratio: (Rise : Run)
Scale: 1:2,000	PDF Print Date: 4/23/2025
Mapped by: m3odnbdg	
Additional Imagery info:	



Channel Features

- Channel Center Line
- Channel Toe
- ↔ Channel Dimensions

Aids to Navigation

- Green Side Aids
- Red Side Aids
- Lights

MLLW

0 - 3	3 - 5	5 - 7	7 - 9	9 - 11	11 - 13	13 - 15	15 - 17	< 17
-------	-------	-------	-------	--------	---------	---------	---------	------

NOTES:

- Horizontal coordinates are referenced to Texas State Plane Coordinate System, South Central Zone NAD83 US Survey Feet.
- Elevations are referenced to Mean Lower Low Water (MLLW) datum.
- This project was designed by the Galveston District of the U.S. Army Corps of Engineers. The initials and signatures and registration designations of individuals appear on these project documents within the scope of their employment as required by er1110-1-8132.
- The information depicted on this survey map represents the results of surveys made on the dates indicated and can only be considered as indicating the general conditions existing at that time. These conditions are subject to rapid change due to shoaling events. A prudent mariner should not rely exclusively on the information provided here. Required by 33 CFR 209.325
- For the most up to date information please check our website at: <http://www.svg.usace.army.mil/Missions/Navigation/HydrographicSurveys/>

Service Layer Credits: World Imagery: Source: Esri, Maxar, Earthstar Geographics, and the GIS User Community
World Imagery: Maxar, Microsoft
World Topographic Map: Brazoria County, Texas Parks & Wildlife, Esri, HERE, Garmin, INCREMENT P, USGS, METINASA, NGA, EPA, USDA

Additional Combined Survey Dates and Stationing:
COMB_SURV_INFO_HERE

Coordinate System: NAD 1983 StatePlane Texas South Central FIPS 4204 Feet
Projection: Lambert Conformal Conic

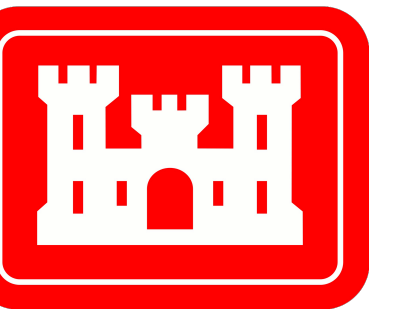
Dredging Reach Extent

Hydrographic Survey Extent

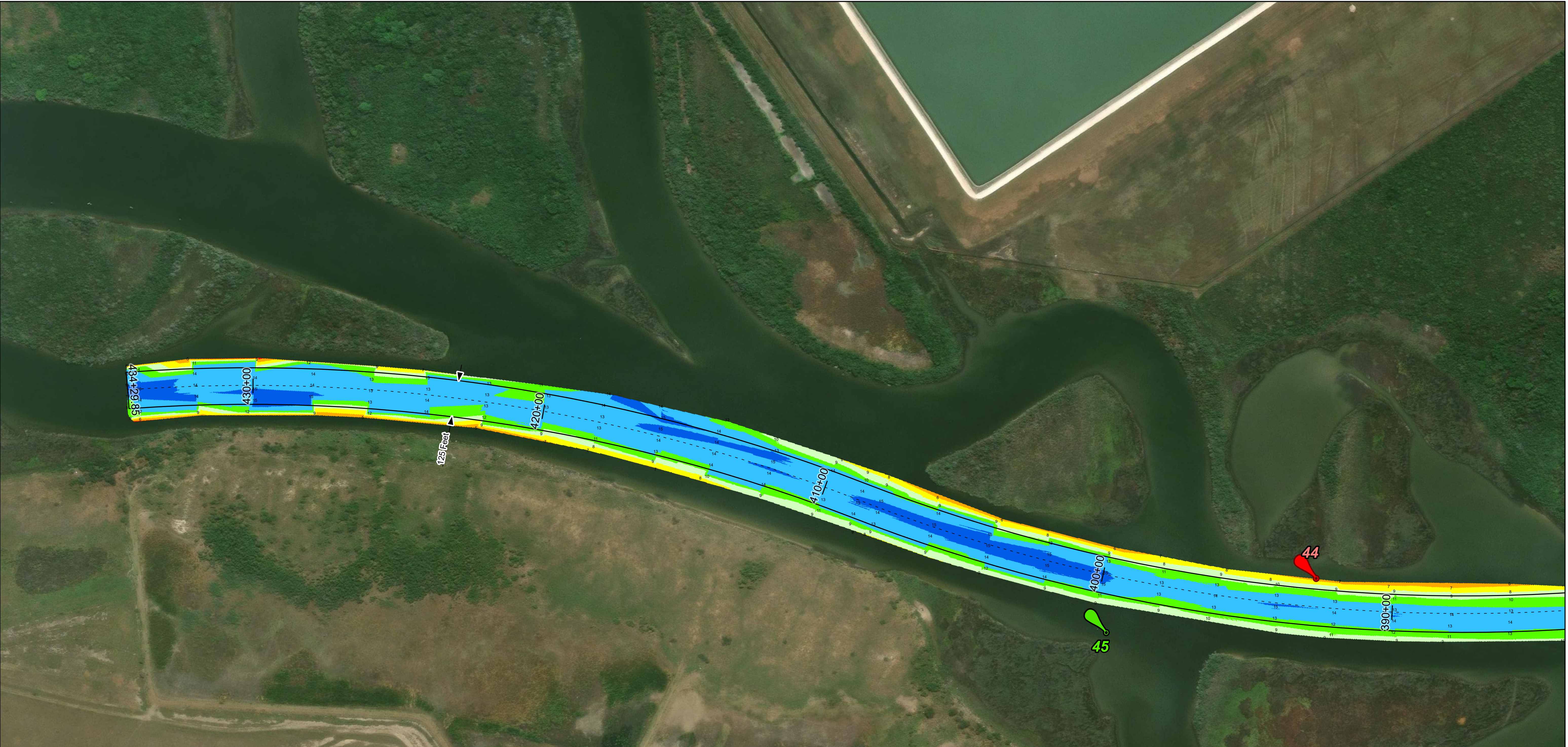
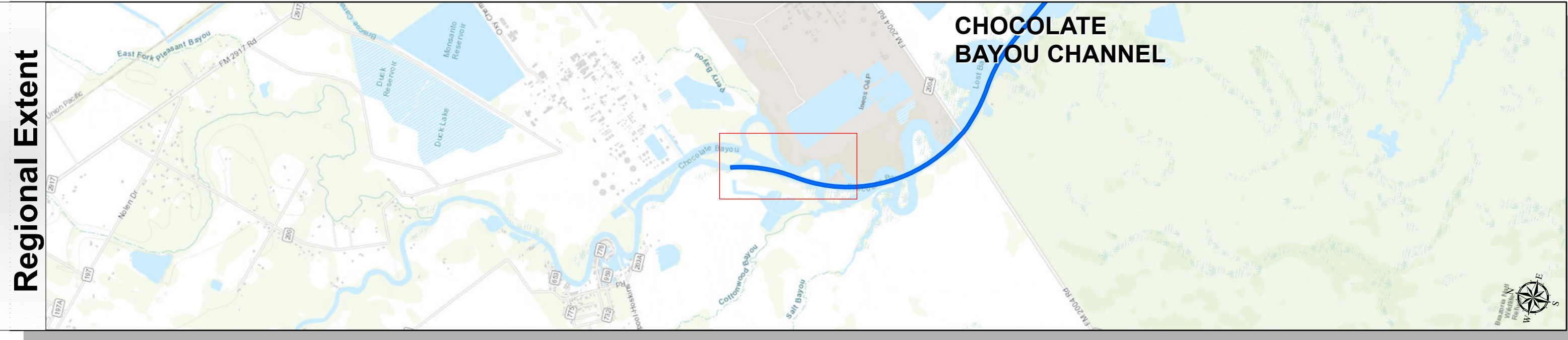
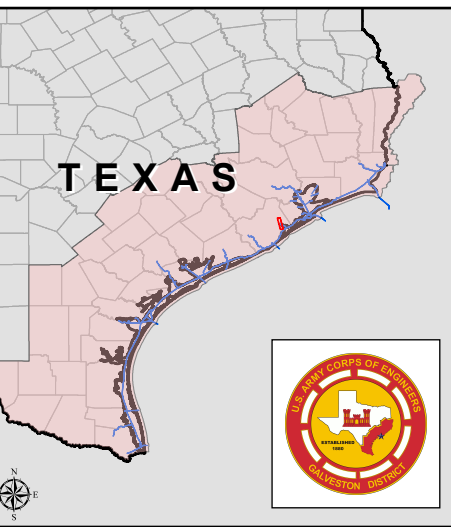
HYDROGRAPHIC SURVEY
U.S. ARMY ENGINEER DISTRICT
CORPS OF ENGINEERS
GALVESTON, TEXAS

Station: 295+58 to 434+29.85
CHOCOLATE BAYOU CHANNEL
Land Cut

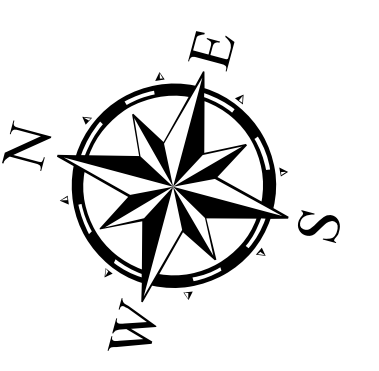
Chocolate Bayou Channel: Land Cut



U.S. Army Corps of Engineers
Galveston District



Latest Survey Collection Date: 31 March 2025	Authorized Depth: -13ft.
Document Page: 3 of 3	Side Slope Ratio: (Rise : Run)
Scale: 1:2,000	PDF Print Date: 4/23/2025
Mapped by: m3odnbdg	
Additional Imagery info:	



Channel Features

- Channel Center Line
- Channel Toe
- ↔ Channel Dimensions

Aids to Navigation

- Green Side Aids
- Red Side Aids
- Lights

MLLW

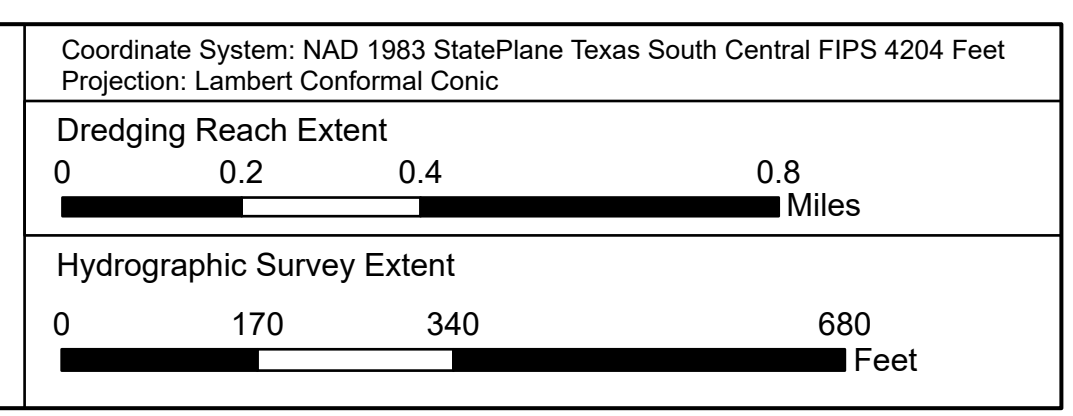
0 - 3	3 - 5	5 - 7	7 - 9	9 - 11	11 - 13	13 - 15	15 - 17	< 17
-------	-------	-------	-------	--------	---------	---------	---------	------

NOTES:

- Horizontal coordinates are referenced to Texas State Plane Coordinate System, South Central Zone NAD83 US Survey Feet.
- Elevations are referenced to Mean Lower Low Water (MLLW) datum.
- This project was designed by the Galveston District of the U.S. Army Corps of Engineers. The initials and signatures and registration designations of individuals appear on these project documents within the scope of their employment as required by er1110-1-8132.
- The information depicted on this survey map represents the results of surveys made on the dates indicated and can only be considered as indicating the general conditions existing at that time. These conditions are subject to rapid change due to shoaling events. A prudent mariner should not rely exclusively on the information provided here. Required by 33 CFR 209.325
- For the most up to date information please check our website at: <http://www.svg.usace.army.mil/Missions/Navigation/HydrographicSurveys/>

Service Layer Credits: World Imagery: Source: Esri, Maxar, Earthstar Geographics, and the GIS User Community
World Imagery: Maxar, Microsoft
World Topographic Map: Brazoria County, Texas Parks & Wildlife, Esri, HERE, Garmin, INCREMENT P, USGS, METINASA, NGA, EPA, USDA

Additional Combined Survey Dates and Stationing:
COMB_SURV_INFO_HERE



HYDROGRAPHIC SURVEY
U.S. ARMY ENGINEER DISTRICT
CORPS OF ENGINEERS
GALVESTON, TEXAS

Station: 295+58 to 434+29.85
CHOCOLATE BAYOU CHANNEL
Land Cut