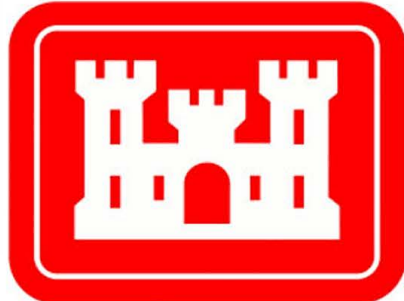
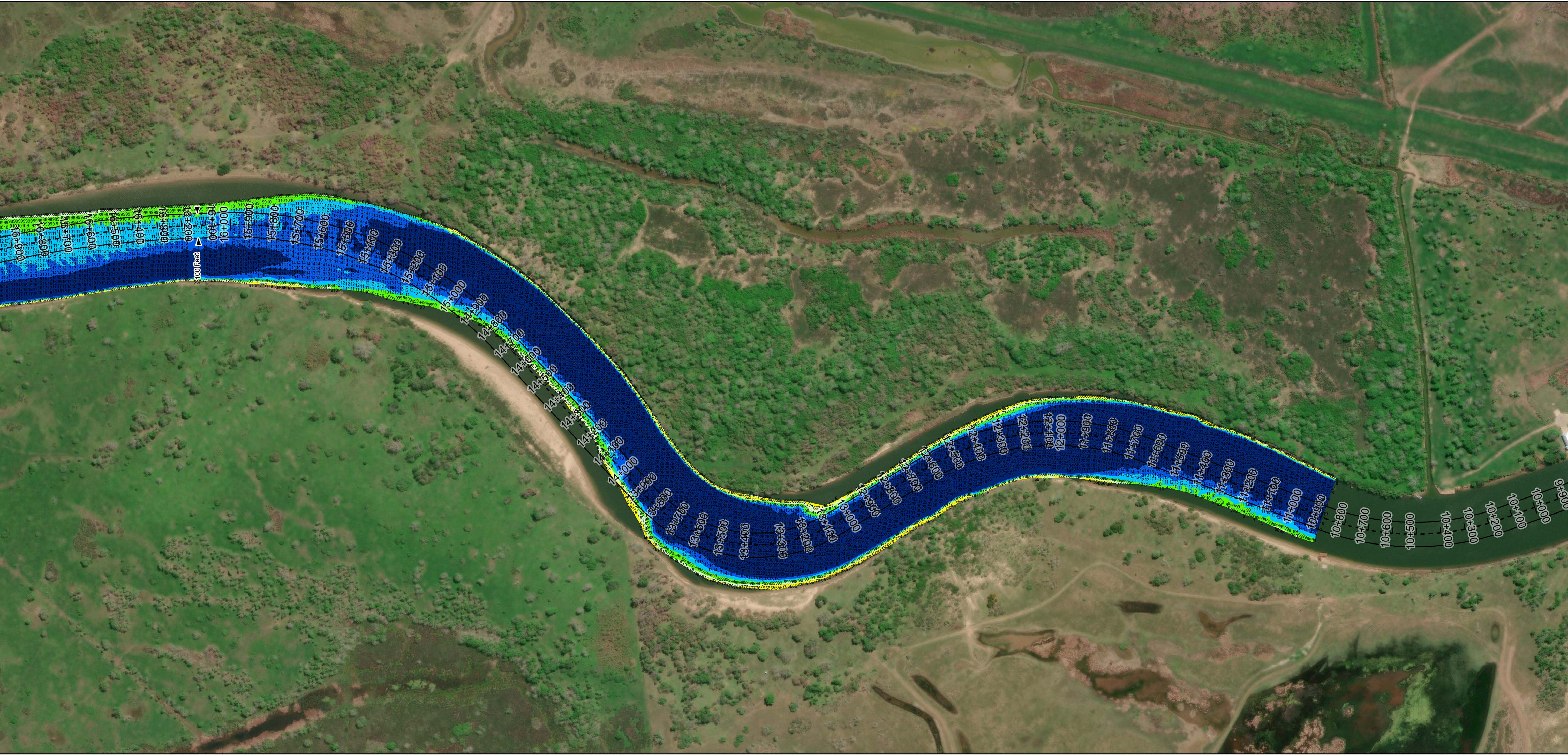


Colorado River: Mile 2 to Mile 8



U.S. Army Corps of Engineers  
Galveston District



**Channel Features**

- Channel Center Line
- Channel Toe
- Channel Dimensions

**Aids to Navigation**

- Green Side Aids
- Red Side Aids
- Lights

**MLLW**

≤ 1	1 - 3	3 - 5	5 - 7	7 - 9	9 - 11	11 - 13	13 - 15	> 15
-----	-------	-------	-------	-------	--------	---------	---------	------

NOTES:  
1. Horizontal coordinates are referenced to Texas state plane coordinate system, south central zone nad83 us survey feet.  
2. Elevations are referenced to mean lower low tide (MLLW) datum.  
3. This project was designed by the Galveston District of the U.S. Army Corps of Engineers. The initials and signatures and registration designations of individuals appear on these project documents within the scope of their employment as required by 47CFR110.1-110.12.  
4. The information depicted on this survey map represents the results of surveys made on the dates indicated and can only be considered as indicating the general conditions existing at that time. These conditions are subject to rapid change due to shoaling events. A prudent mariner should not rely exclusively on the information provided here. Required by 33 CFR 200.325.  
5. For the most up to date information please check our website at: <http://www.usace.army.mil/Missions/Navigation/HydrographicSurveys/>  
Service Layer Credits: World Topographic Map: Texas Parks & Wildlife, Esri, HERE, Garmin, INCREMENT P, USGS, METINASA, NGA, EPA, USDA  
World Imagery: Maxar, Microsoft  
World Imagery: Maxar  
World Ocean Base: Esri, GEBCO, Garmin, NaturalVue

Additional Combined Survey Dates and Stationing:  
Combined survey dates 20240213\_CS\_16P000\_35P000; 20240214\_PR\_35P000\_42P000.

Coordinate System: NAD 1983 StatePlane Texas South Central FIPS 4204 Feet  
Projection: Lambert Conformal Conic

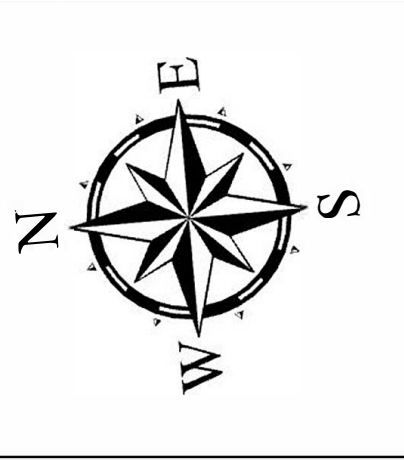
Dredging Reach Extent

0 0.25 0.5 1 Miles

Hydrographic Survey Extent

0 205 410 820 Feet

Latest Survey Collection Date: 14 February 2024		Authorized Depth: -11ft.
Document Page:1 of 6	Website Index Number: 3	Side Slope Ratio: (Rise : Run)
Scale: 1:2,400		PDF Print Date: 2/21/2024
Mapped by: m3odnmhg		
Additional Imagery info:		



**HYDROGRAPHIC SURVEY**  
U.S. ARMY ENGINEER DISTRICT  
CORPS OF ENGINEERS  
GALVESTON, TEXAS

**Station: 10+903 to 42+000**  
**COLORADO RIVER**  
Mile 2 to Mile 8



# Colorado River: Mile 2 to Mile 8



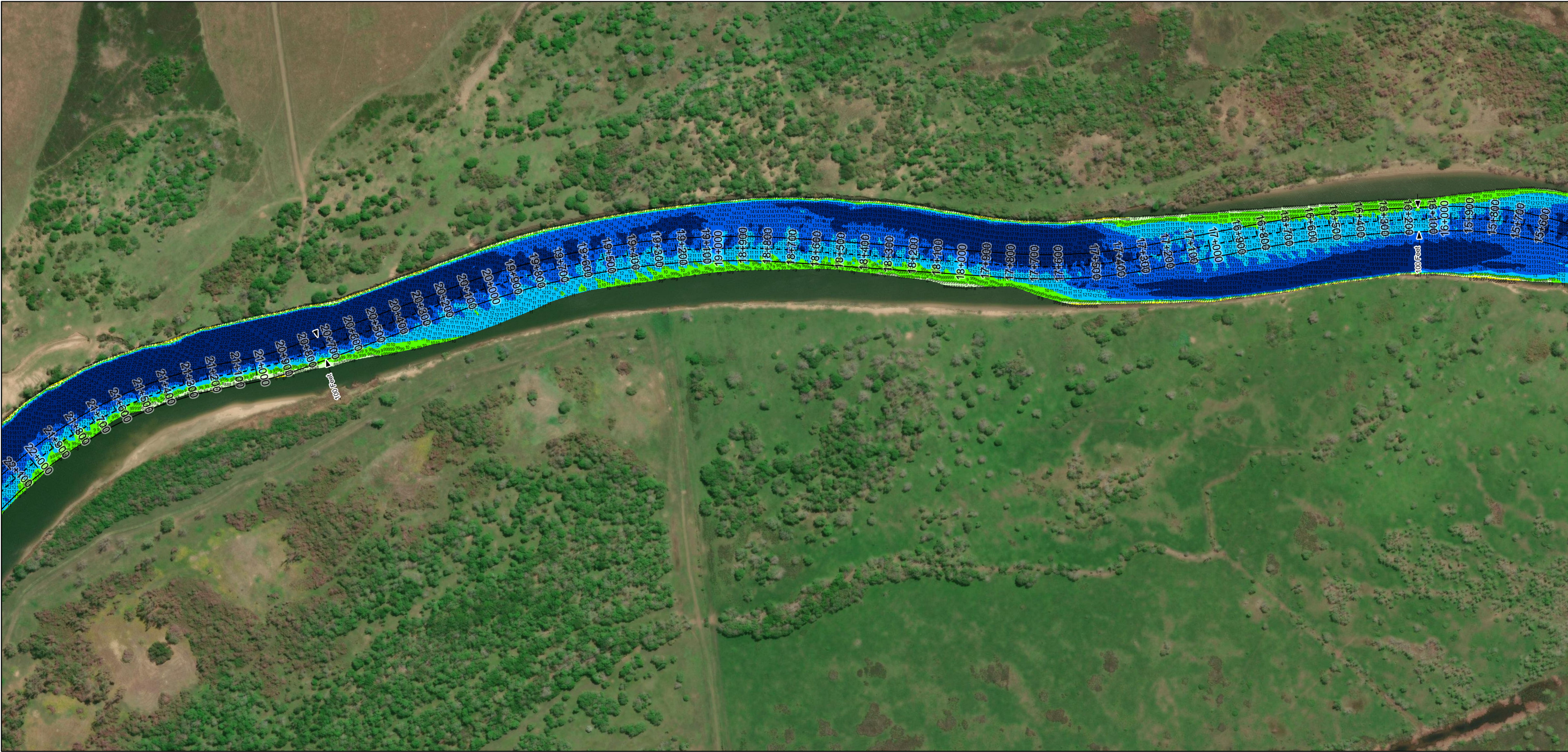
U.S. Army Corps of Engineers  
Galveston District



Regional Extent



Dredging Reach Extent

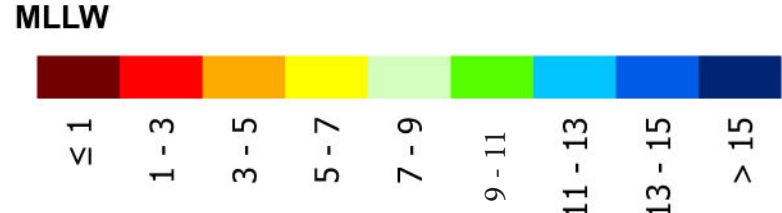


Channel Features

- Channel Center Line
- Channel Toe
- Channel Dimensions

Aids to Navigation

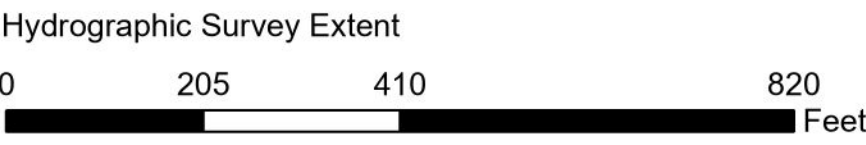
- Green Side Aids
- Red Side Aids
- Lights



NOTES:  
1. Horizontal coordinates are referenced to Texas state plane coordinate system, south central zone nad83 us survey feet.  
2. Elevations are referenced to mean lower low tide (MLLW) datum.  
3. This project was designed by the Galveston District of the U.S. Army Corps of Engineers. The initials and signatures and registration designations of individuals appear on these project documents within the scope of their employment as required by 47 CFR 111.101-111.102.  
4. The information depicted on this survey map represents the results of surveys made on the dates indicated and can only be considered as indicating the general conditions existing at that time. These conditions are subject to rapid change due to shoaling events. A prudent mariner should not rely exclusively on the information provided here. Required by 33 CFR 200.225.  
5. For the most up to date information please check our website at: <http://www.swg.usace.army.mil/Missions/Navigation/HydrographicSurveys/>  
Service Layer Credits: World Topographic Map: Texas Parks & Wildlife, Esri, HERE, Garmin, INCREMENT P, USGS, METI/NASA, NOAA, EPA, USDA  
World Imagery: Maxar, Microsoft  
World Ocean Base: Esri, GEBCO, Garmin, NaturalVue

Additional Combined Survey Dates and Stationing:  
Combined survey dates 20240213\_CS\_16P000\_35P000; 20240214\_PR\_35P000\_42P000.

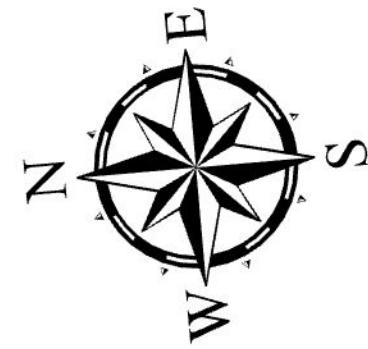
Coordinate System: NAD 1983 StatePlane Texas South Central FIPS 4204 Feet  
Projection: Lambert Conformal Conic



HYDROGRAPHIC SURVEY

U.S. ARMY ENGINEER DISTRICT  
CORPS OF ENGINEERS  
GALVESTON, TEXAS

Station: 10+903 to 42+000  
COLORADO RIVER  
Mile 2 to Mile 8



Latest Survey Collection Date: 14 February 2024

Document Page: 2 of 6

Website Index Number: 4

Scale: 1:2,400

Mapped by: m3odnmhg

Additional Imagery info:

Authorized Depth: -11ft.

Side Slope Ratio: (Rise : Run)

PDF Print Date: 2/21/2024



Colorado River: Mile 2 to Mile 8



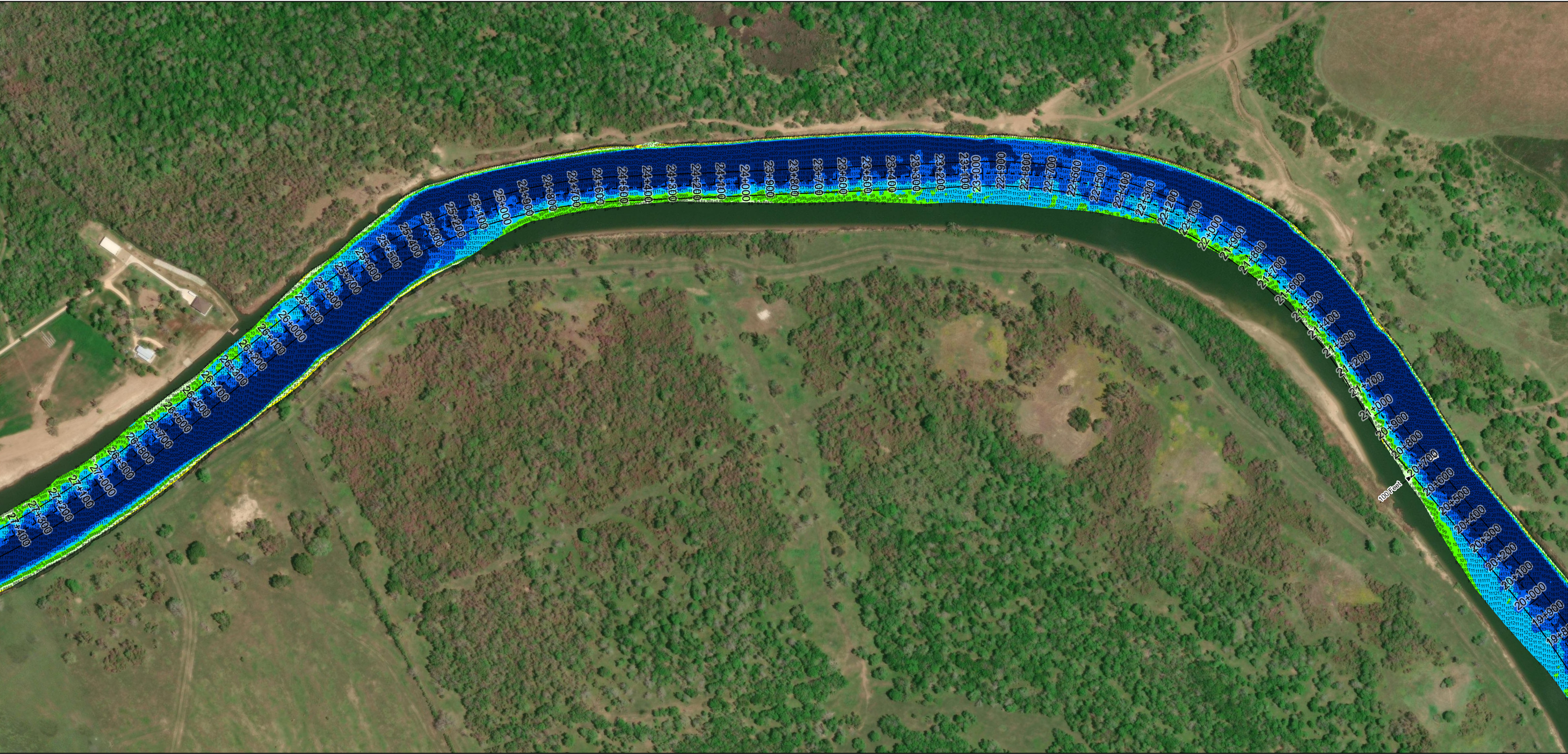
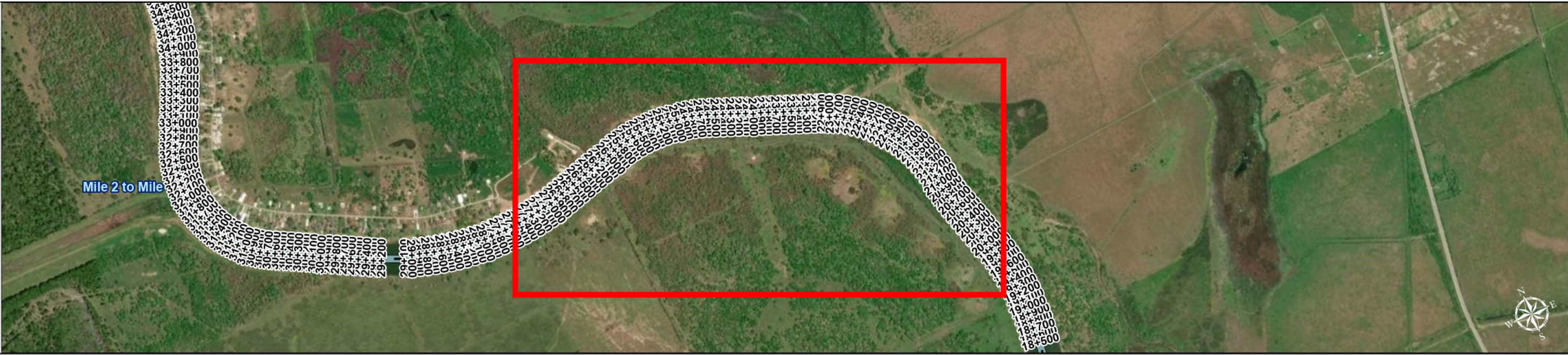
U.S. Army Corps of Engineers  
Galveston District



Regional Extent



Dredging Reach Extent



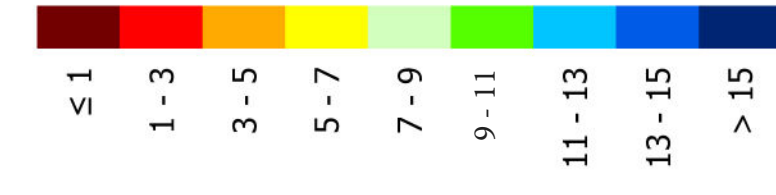
Channel Features

- Channel Center Line
- Channel Toe
- Channel Dimensions

Aids to Navigation

- Green Side Aids
- Red Side Aids
- Lights

MLLW



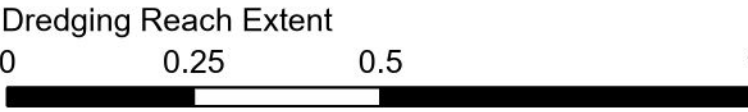
NOTES:

- Horizontal coordinates are referenced to Texas state plane coordinate system, south central zone nad83 us survey feet.
  - Elevations are referenced to mean lower low tide (MLLW) datum.
  - This project was designed by the Galveston District of the U.S. Army Corps of Engineers. The initials and signatures and registration designations of individuals appear on these project documents within the scope of their employment as required by 47 CFR 111.1-111.2.
  - The information depicted on this survey map represents the results of surveys made on the dates indicated and can only be considered as indicating the general conditions existing at that time. These conditions are subject to rapid change due to shoaling events. A prudent mariner should not rely exclusively on the information provided here. Required by 33 CFR 209.225.
  - For the most up to date information please check our website at: <http://www.svg.usace.army.mil/Missions/Navigation/HydrographicSurveys/>
- Service Layer Credits: World Topographic Map: Texas Parks & Wildlife, Esri, HERE, Garmin, INCREMENT P, USGS, METI/NASA, NGA, EPA, USDA  
World Imagery: Maxar, Microsoft  
World Imagery: Maxar  
World Ocean Base: Esri, GEBCO, Garmin, NaturalVue

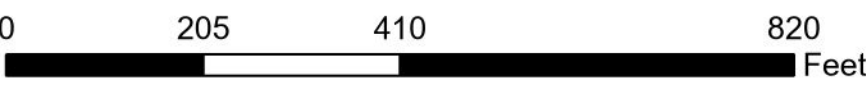
Additional Combined Survey Dates and Stationing:

Combined survey dates 20240213\_CS\_16P000\_35P000; 20240214\_PR\_35P000\_42P000.

Coordinate System: NAD 1983 StatePlane Texas South Central FIPS 4204 Feet  
Projection: Lambert Conformal Conic



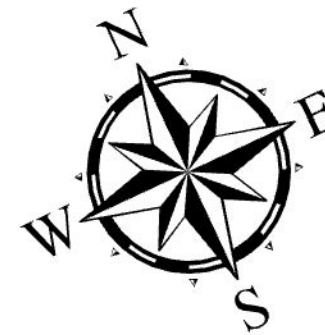
Hydrographic Survey Extent



HYDROGRAPHIC SURVEY

U.S. ARMY ENGINEER DISTRICT  
CORPS OF ENGINEERS  
GALVESTON, TEXAS

Station: 10+903 to 42+000  
COLORADO RIVER  
Mile 2 to Mile 8



Latest Survey Collection Date: 14 February 2024

Document Page: 3 of 6

Website Index Number: 5

Authorized Depth: -11ft.

Side Slope Ratio: (Rise : Run)

PDF Print Date: 2/21/2024

Scale: 1:2,400

Mapped by: m3odnmhg

Additional Imagery info:

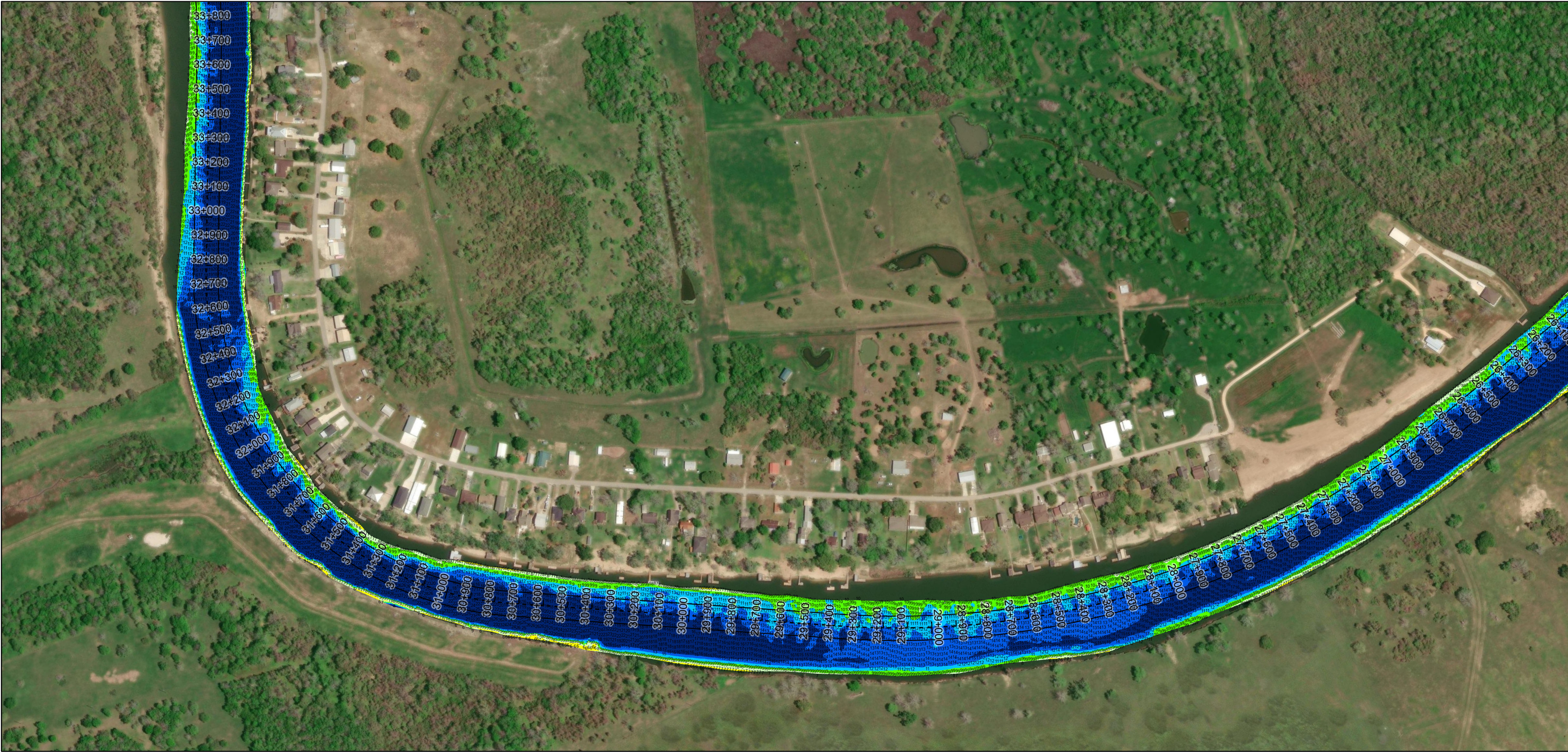
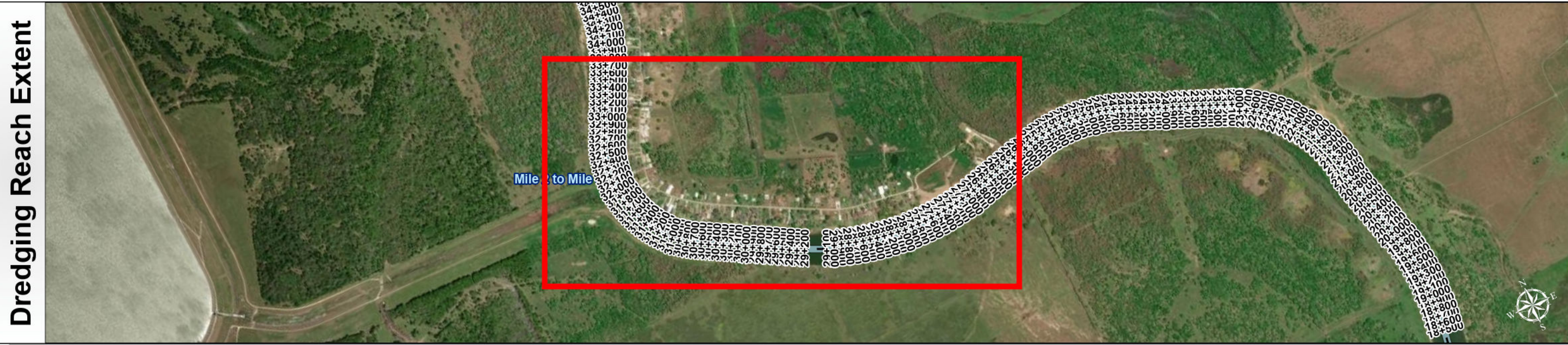


Colorado River: Mile 2 to Mile 8



U.S. Army Corps of Engineers  
Galveston District






Channel Features

- Channel Center Line
- Channel Toe
- Channel Dimensions

Aids to Navigation

- Green Side Aids
- Red Side Aids
- Lights

MLLW

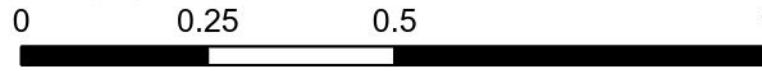


NOTES:  
1. Horizontal coordinates are referenced to Texas state plane coordinate system, south central zone nad83 us survey feet.  
2. Elevations are referenced to mean lower low tide (MLLW) datum.  
3. This project was designed by the Galveston District of the U.S. Army Corps of Engineers. The initials and signatures and registration designations of individuals appear on these project documents within the scope of their employment as required by 47 CFR 111.11-11.112.  
4. The information depicted on this survey map represents the results of surveys made on the dates indicated and can only be considered as indicating the general conditions existing at that time. These conditions are subject to rapid change due to shoaling events. A prudent mariner should not rely exclusively on the information provided here. Required by 33 CFR 209.225.  
5. For the most up to date information please check our website at: <http://www.swg.usace.army.mil/Missions/Navigation/HydrographicSurveys/>

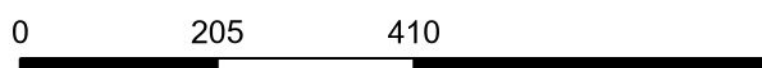
Service Layer Credits: World Topographic Map: Texas Parks & Wildlife, Esri, HERE, Garmin, INCREMENT P, USGS, METI/NASA, NOAA, EPA, USDA  
World Imagery: Maxar, Microsoft  
World Imagery: Maxar  
World Ocean Base: Esri, GEBCO, Garmin, NaturalVue

Additional Combined Survey Dates and Stationing:  
Combined survey dates 20240213\_CS\_16P000\_35P000; 20240214\_PR\_35P000\_42P000.

Dredging Reach Extent

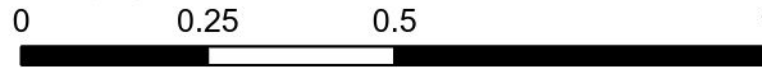


Hydrographic Survey Extent

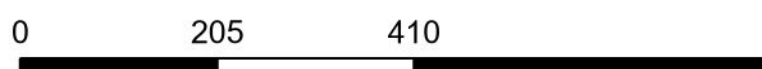


Coordinate System: NAD 1983 StatePlane Texas South Central FIPS 4204 Feet  
Projection: Lambert Conformal Conic

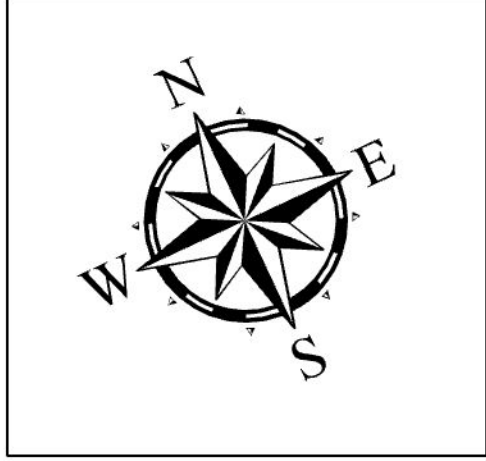
Dredging Reach Extent



Hydrographic Survey Extent



Latest Survey Collection Date: 14 February 2024		Authorized Depth: -11ft.
Document Page:4 of 6	Website Index Number: 6	Side Slope Ratio: (Rise : Run)
Scale: 1:2,400		PDF Print Date: 2/21/2024
Mapped by: m3odnmhg		
Additional Imagery info:		



**HYDROGRAPHIC SURVEY**  
U.S. ARMY ENGINEER DISTRICT  
CORPS OF ENGINEERS  
GALVESTON, TEXAS

**Station: 10+903 to 42+000**  
**COLORADO RIVER**  
Mile 2 to Mile 8



Colorado River: Mile 2 to Mile 8



U.S. Army Corps of Engineers  
Galveston District



**Channel Features**

- Channel Center Line
- Channel Toe
- Channel Dimensions

**Aids to Navigation**

- Green Side Aids
- Red Side Aids
- Lights

**MLLW**

≤ 1

1 - 3

3 - 5

5 - 7

7 - 9

9 - 11

11 - 13

13 - 15

> 15

**NOTES:**

1. Horizontal coordinates are referenced to Texas state plane coordinate system, south central zone nad83 us survey feet.

2. Elevations are referenced to mean lower low tide (MLLW) datum.

3. This project was designed by the Galveston District of the U.S. Army Corps of Engineers. The initials and signatures and registration designations of individuals appear on these project documents within the scope of their employment as required by 47 CFR 110.1-110.152.

4. The information depicted on this survey map represents the results of surveys made on the dates indicated and can only be considered as indicating the general conditions existing at that time. These conditions are subject to rapid change due to shoaling events. A prudent mariner should not rely exclusively on the information provided here. Required by 33 CFR 209.225.

5. For the most up to date information please check our website at: <http://www.swg.usace.army.mil/Missions/Navigation/HydrographicSurveys/>

Service Layer Credits: World Topographic Map: Texas Parks & Wildlife, Esri, HERE, Garmin, INCREMENT P, USGS, METI/NASA, NGA, EPA, USDA, World Imagery: Maxar, Microsoft, World Imagery: Maxar, World Ocean Base: Esri, GEBCO, Garmin, NaturalVue

**Additional Combined Survey Dates and Stationing:**

Combined survey dates 20240213\_CS\_16P000\_35P000; 20240214\_PR\_35P000\_42P000.

**Coordinate System:** NAD 1983 StatePlane Texas South Central FIPS 4204 Feet  
Projection: Lambert Conformal Conic

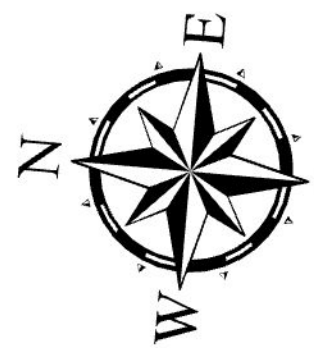
**Dredging Reach Extent**

0 0.25 0.5 1 Miles

**Hydrographic Survey Extent**

0 205 410 820 Feet

Latest Survey Collection Date: 14 February 2024	Authorized Depth: -11ft.
Document Page: 5 of 6	Side Slope Ratio: (Rise : Run)
Scale: 1:2,400	PDF Print Date: 2/21/2024
Mapped by: m3odnmhg	
Additional Imagery info:	



**HYDROGRAPHIC SURVEY**  
U.S. ARMY ENGINEER DISTRICT  
CORPS OF ENGINEERS  
GALVESTON, TEXAS  
**Station: 10+903 to 42+000**  
**COLORADO RIVER**  
Mile 2 to Mile 8



Colorado River: Mile 2 to Mile 8



U.S. Army Corps of Engineers  
Galveston District



Regional Extent



Dredging Reach Extent



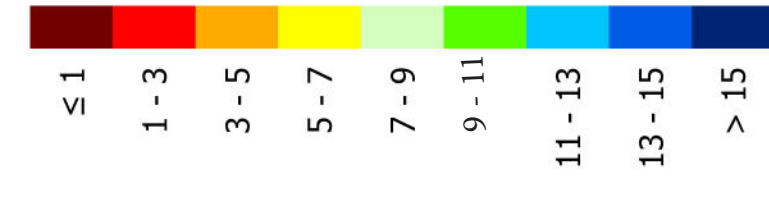
Channel Features

- Channel Center Line
- Channel Toe
- Channel Dimensions

Aids to Navigation

- Green Side Aids
- Red Side Aids
- Lights

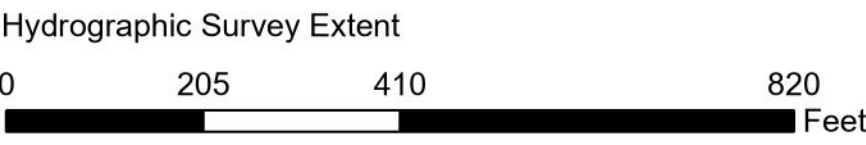
MLLW



NOTES:  
1. Horizontal coordinates are referenced to Texas state plane coordinate system, south central zone nad83 us survey feet.  
2. Elevations are referenced to mean lower low tide (MLLW) datum.  
3. This project was designed by the Galveston District of the U.S. Army Corps of Engineers. The initials and signatures and registration designations of individuals appear on these project documents within the scope of their employment as required by 47CFR 110.1-110.12.  
4. The information depicted on this survey map represents the results of surveys made on the dates indicated and can only be considered as indicating the general conditions existing at that time. These conditions are subject to rapid change due to shoaling events. A prudent mariner should not rely exclusively on the information provided here. Required by 33 CFR 209.225.  
5. For the most up to date information please check our website at: <http://www.usace.army.mil/missions/navigation/hydrographic-surveys/>  
Service Layer Credits: World Topographic Map: Texas Parks & Wildlife, Esri, HERE, Garmin, INCREMENT P, USGS, METI/NASA, NOAA, EPA, USDA  
World Imagery: Maxar, Microsoft  
World Imagery: Maxar  
World Ocean Base: Esri, GEBCO, Garmin, NaturalVue

Additional Combined Survey Dates and Stationing:  
Combined survey dates 20240213\_CS\_16P000\_35P000; 20240214\_PR\_35P000\_42P000.

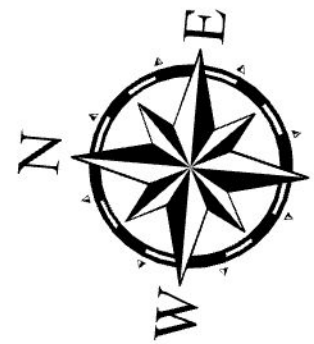
Coordinate System: NAD 1983 StatePlane Texas South Central FIPS 4204 Feet  
Projection: Lambert Conformal Conic



HYDROGRAPHIC SURVEY

U.S. ARMY ENGINEER DISTRICT  
CORPS OF ENGINEERS  
GALVESTON, TEXAS

Station: 10+903 to 42+000  
COLORADO RIVER  
Mile 2 to Mile 8



Latest Survey Collection Date: 14 February 2024  
Document Page: 6 of 6  
Scale: 1:2,400  
Mapped by: m3odnmhg  
Additional Imagery info:

Authorized Depth: -11ft.  
Side Slope Ratio: (Rise : Run)  
PDF Print Date: 2/21/2024

Website Index Number: 8  
Scale: 1:2,400  
Mapped by: m3odnmhg  
Additional Imagery info: