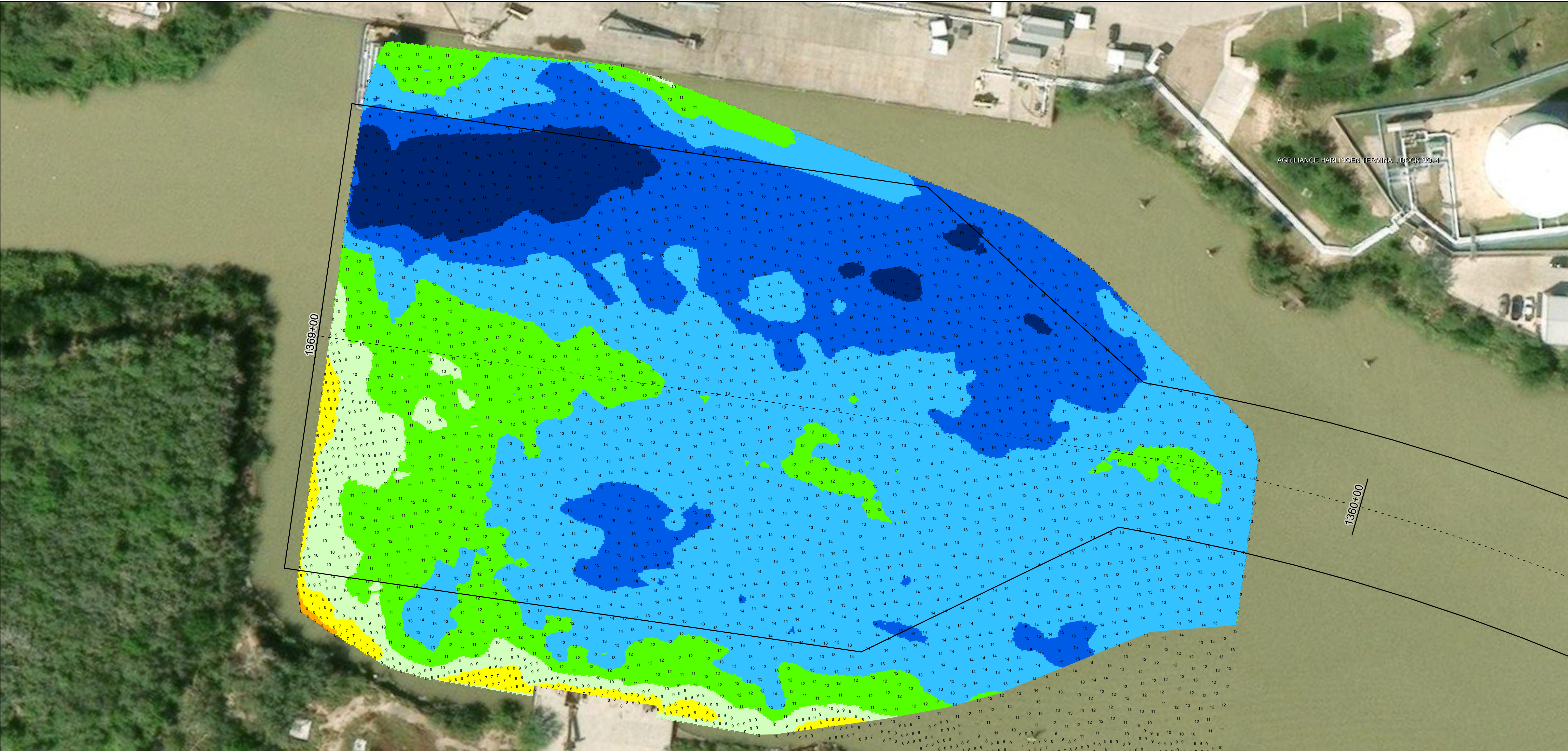
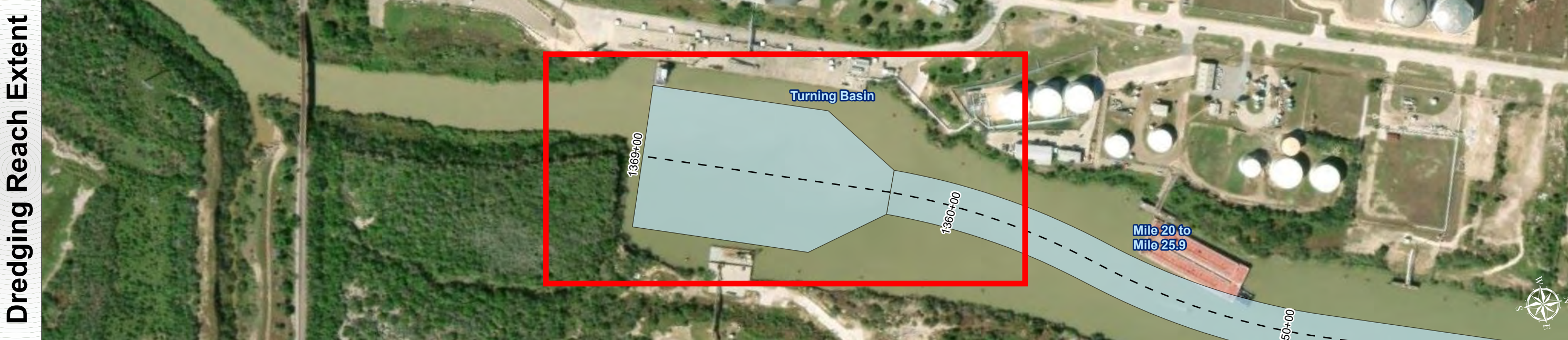
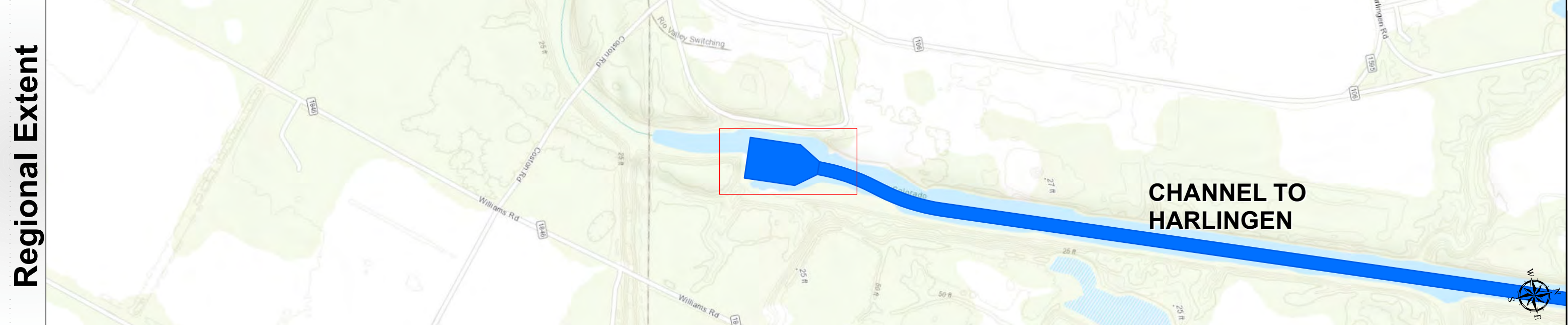
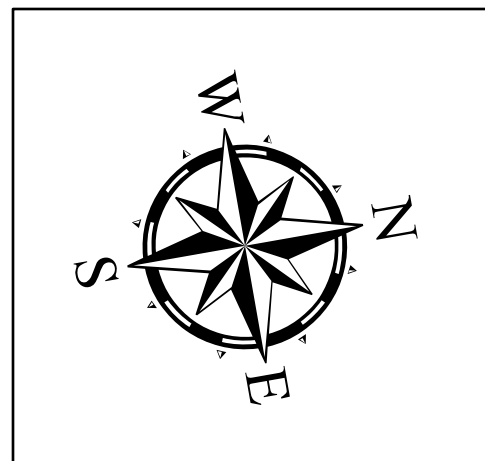


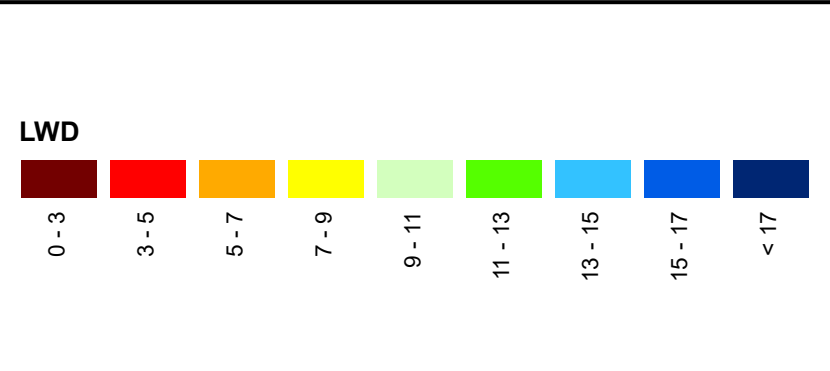
# Channel to Harlingen: Turning Basin



Latest Survey Collection Date: 10 April 2025	Authorized Depth: -13ft.
Document Page: 1 of 1	Width Range: 400ft to 400ft
Scale: 1:500	Side Slope Ratio: 1:02 (Rise : Run)
Mapped by: M3AOXPAC	PDF Print Date: 4/22/2025
Additional Imagery info:	
Website Index Number: 22	



- Channel Features**
- Channel Center Line
  - Channel Toe
  - ↔ Channel Dimensions
- Aids to Navigation**
- Green Side Aids
  - Red Side Aids
  - Lights

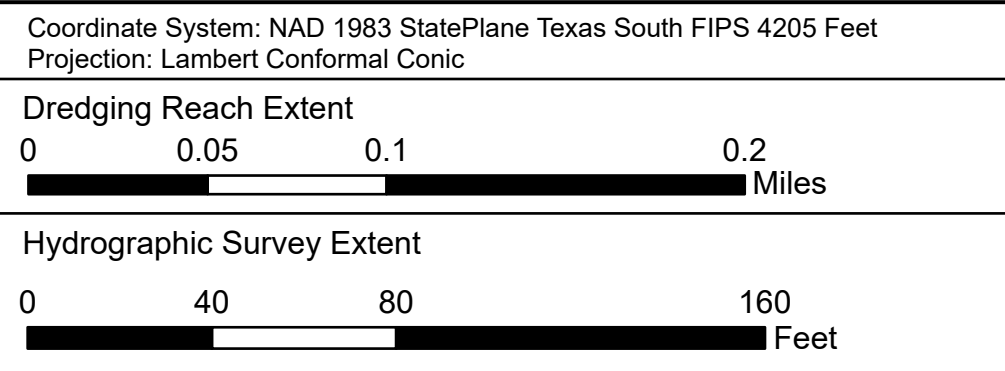


**NOTES:**

- Horizontal coordinates are referenced to Texas State Plane Coordinate System, South Zone NAD83 US Survey Feet.
- Elevations are referenced to Mean Lower Low Water (MLLW) datum.
- This project was designed by the Galveston District of the U.S. Army Corps of Engineers. The initials and signatures and registration designations of individuals appear on these project documents within the scope of their employment as required by er1110.4-132.
- The information depicted on this survey map represents the results of surveys made on the dates indicated and can only be considered as indicating the general conditions existing at that time. These conditions are subject to rapid change due to shoaling events. A prudent mariner should not rely exclusively on the information provided here. Required by 33 CFR 209.225.
- For the most up to date information please check our website at: <http://www.svg.usace.army.mil/Missions/Navigation/HydrographicSurveys/>

Service Layer Credits: World Topographic Map, Texas Parks & Wildlife, Esri, HERE, Garmin, INCREMENT P, USGS, METINASA, EPA, USDA  
 World Imagery Source: Esri, Maxar, Earthstar, Geographics, and the GIS User Community  
 World Imagery: Maxar, Microsoft  
 World Ocean Base: Esri, GEBCO, Garmin, NaturalVue

Additional Combined Survey Dates and Stationing:  
 COMB\_SURV\_INFO\_HERE



**HYDROGRAPHIC SURVEY**  
 U.S. ARMY ENGINEER DISTRICT  
 CORPS OF ENGINEERS  
 GALVESTON, TEXAS

**Station: 1364+50 to 1369+50**  
**CHANNEL TO HARLINGEN**  
 Turning Basin