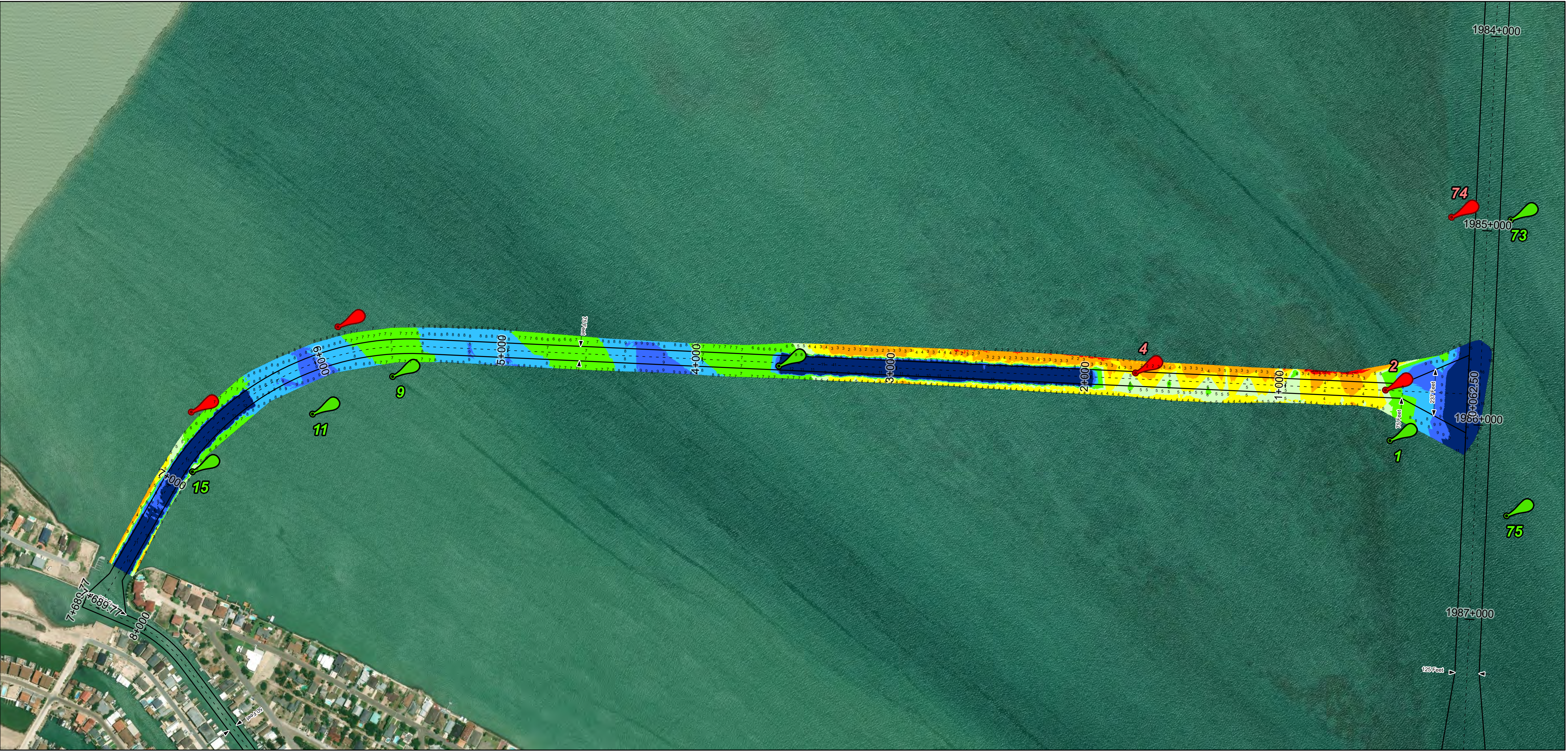
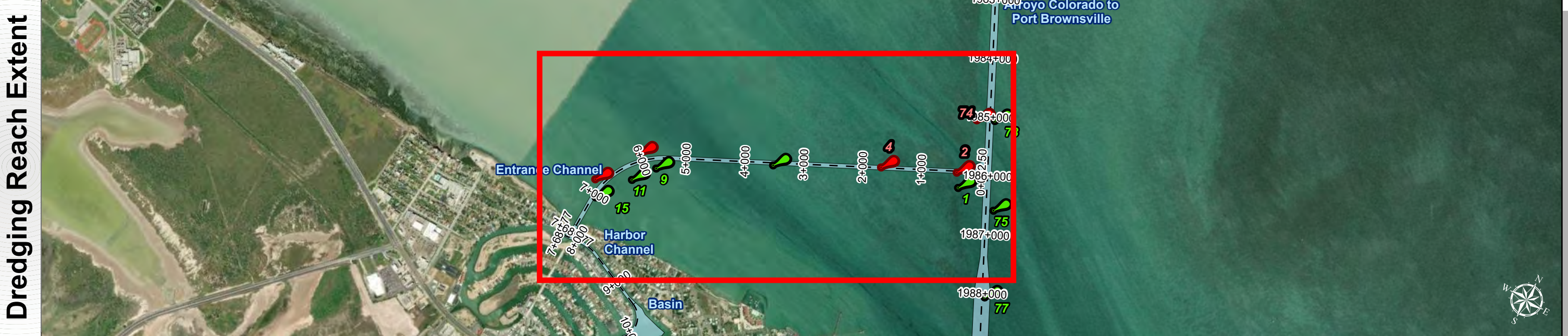
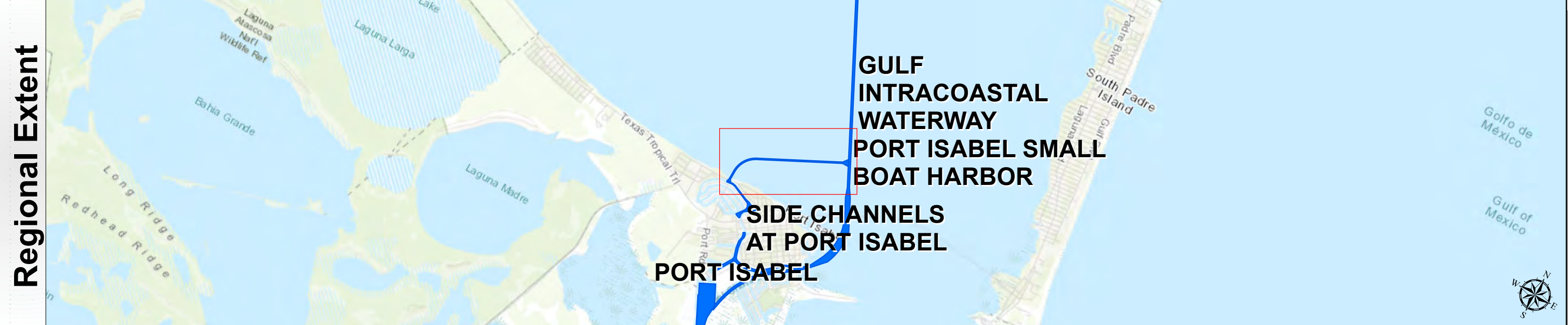


Port Isabel Small Boat Harbor: Entrance Channel



U.S. Army Corps of Engineers
Galveston District



Latest Survey Collection Date: 27 February 2025	Authorized Depth: -9ft.
Document Page: 1 of 1	Side Slope Ratio: (Rise : Run)
Scale: 1:3,000	PDF Print Date: 3/3/2025
Mapped by: M3AOXPAC	
Additional Imagery info:	



Channel Features

- Channel Center Line
- Channel Toe
- Channel Dimensions

Aids to Navigation

- Green Side Aids
- Red Side Aids
- Lights

MLLW

0-1	1-2	3-4	4-5	5-6	6-8	8-9	9-10	<12
-----	-----	-----	-----	-----	-----	-----	------	-----

NOTES:

- Horizontal coordinates are referenced to Texas State Plane Coordinate System, South Zone NAD83 US Survey Feet.
- Elevations are referenced to Mean Lower Low Water (MLLW) datum.
- This project was designed by the Galveston District of the U.S. Army Corps of Engineers. The initials and signatures and registration designations of individuals appear on these project documents within the scope of their employment as required by 47 CFR 111.1-18132.
- The information depicted on this survey map represents the results of surveys made on the dates indicated and can only be considered as indicating the general conditions existing at that time. These conditions are subject to rapid change due to shoaling events. A prudent mariner should not rely exclusively on the information provided here. Required by 33 CFR 209.325
- For the most up to date information please check our website at: <http://www.usace.army.mil/Missions/Navigation/HydrographicSurveys/>

Service Layer Credits: World Topographic Map: Texas Parks & Wildlife, Esri, HERE, Garmin, INCREMENT P, USGS, METINASA, NGA, EPA, USDA
World Imagery: Maxar
World Ocean Base: Esri, GEBCO, Garmin, NaturalVue

Additional Combined Survey Dates and Stationing:
 Combined survey dates 20240716_CS; 20250227_CS_00P062_02P000;
 IS_01_ENT_20250227_CS_03P600_06P400

Coordinate System: NAD 1983 StatePlane Texas South FIPS 4205 Feet
 Projection: Lambert Conformal Conic

Dredging Reach Extent

0 0.3 0.6 1.2 Miles

Hydrographic Survey Extent

0 255 510 1,020 Feet

HYDROGRAPHIC SURVEY
 U.S. ARMY ENGINEER DISTRICT
 CORPS OF ENGINEERS
 GALVESTON, TEXAS

Station: 0+063 to 7+500
PORT ISABEL SMALL BOAT HARBOR
 Entrance Channel