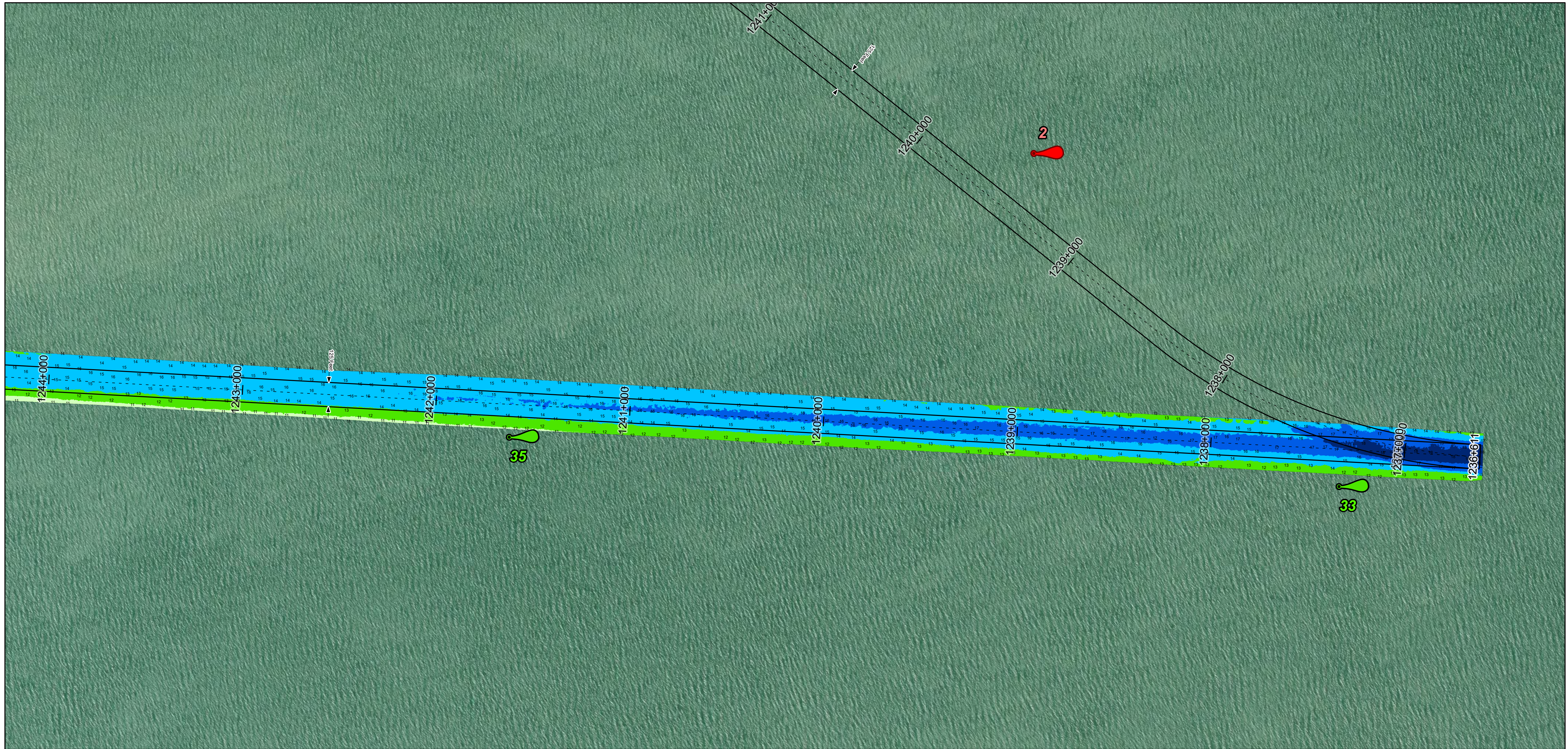
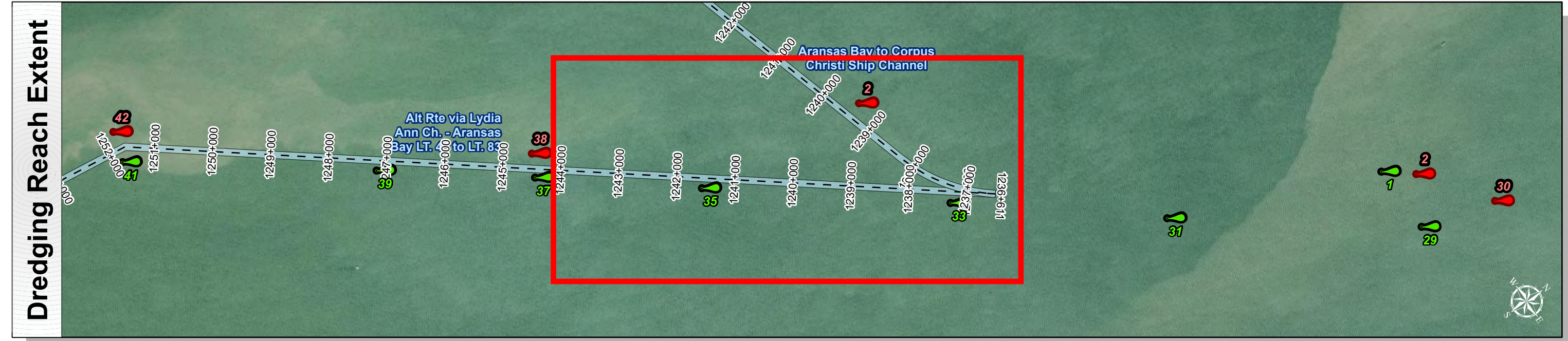
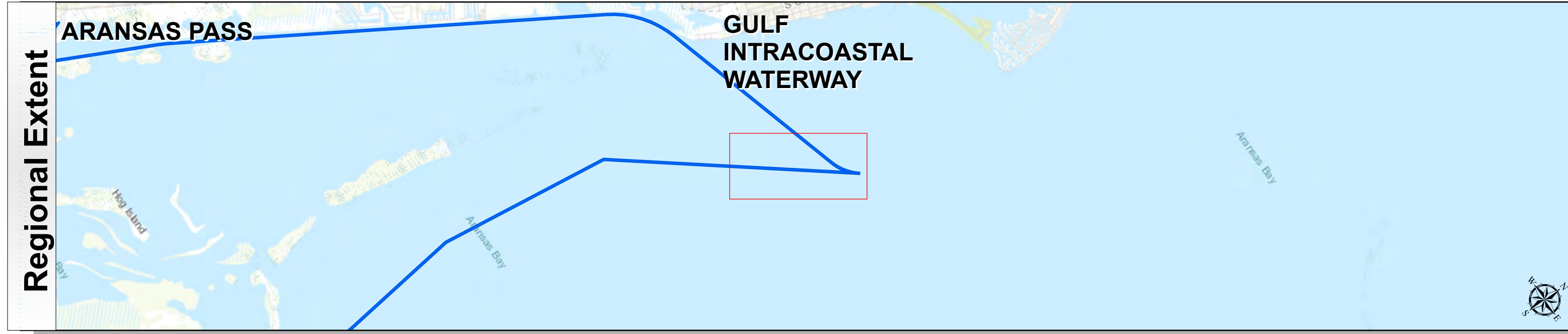


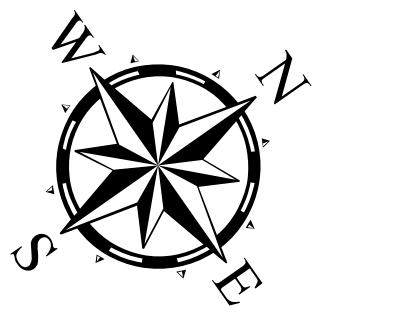
Gulf Intracoastal Waterway: Alt Rte via Lydia Ann Ch. - Aransas Bay LT. 49 to LT. 83



U.S. Army Corps of Engineers
Galveston District



Latest Survey Collection Date: 15 April 2025	Authorized Depth: -14ft.
Document Page: 1 of 6	Width Range: 125ft to 125ft
Scale: 1:3,000	Side Slope Ratio: (Rise : Run)
Mapped by: M3AOXPAC	PDF Print Date: 4/17/2025
Additional Imagery info:	



Channel Features	Aids to Navigation	MLLW
<ul style="list-style-type: none"> --- Channel Center Line — Channel Toe ↔ Channel Dimensions 	<ul style="list-style-type: none"> Green Side Aids Red Side Aids Lights 	<ul style="list-style-type: none"> 0 - 4 4 - 6 6 - 8 8 - 10 10 - 12 12 - 14 14 - 16 16 - 18 < 18

NOTES:
 1. Horizontal coordinates are referenced to Texas State Plane Coordinate System, South Zone NAD83 US Survey Feet.
 2. Elevations are referenced to Mean Lower Low Water (MLLW) datum.
 3. This project was designed by the Galveston District of the U.S. Army Corps of Engineers. The initials and signatures and registration designations of individuals appear on these project documents within the scope of their employment as required by er1110-1-8132.
 4. The information depicted on this survey map represents the results of surveys made on the dates indicated and can only be considered as indicating the general conditions existing at that time. These conditions are subject to rapid change due to shoaling events. A prudent mariner should not rely exclusively on the information provided here. Required by 33 CFR 209.225
 5. For the most up to date information please check our website at: <http://www.svg.usace.army.mil/Missions/Navigation/HydrographicSurveys/>
 Service Layer Credits: World Topographic Map: Texas Parks & Wildlife, Esri, HERE, Garmin, INCREMENT P, USGS, METINASA, NGA, EPA, USDA
 World Imagery: Source: Esri, Maxar, Earthstar Geographics, and the GIS User Community
 World Ocean Base: Esri, GEBCO, Garmin, NaturalVie

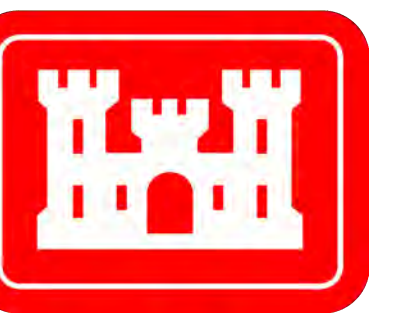
Additional Combined Survey Dates and Stationing:
 COMB_SURV_INFO_HERE

Coordinate System: NAD 1983 StatePlane Texas South FIPS 4205 Feet Projection: Lambert Conformal Conic	
Dredging Reach Extent	0 0.3 0.6 1.2 Miles
Hydrographic Survey Extent	0 255 510 1,020 Feet

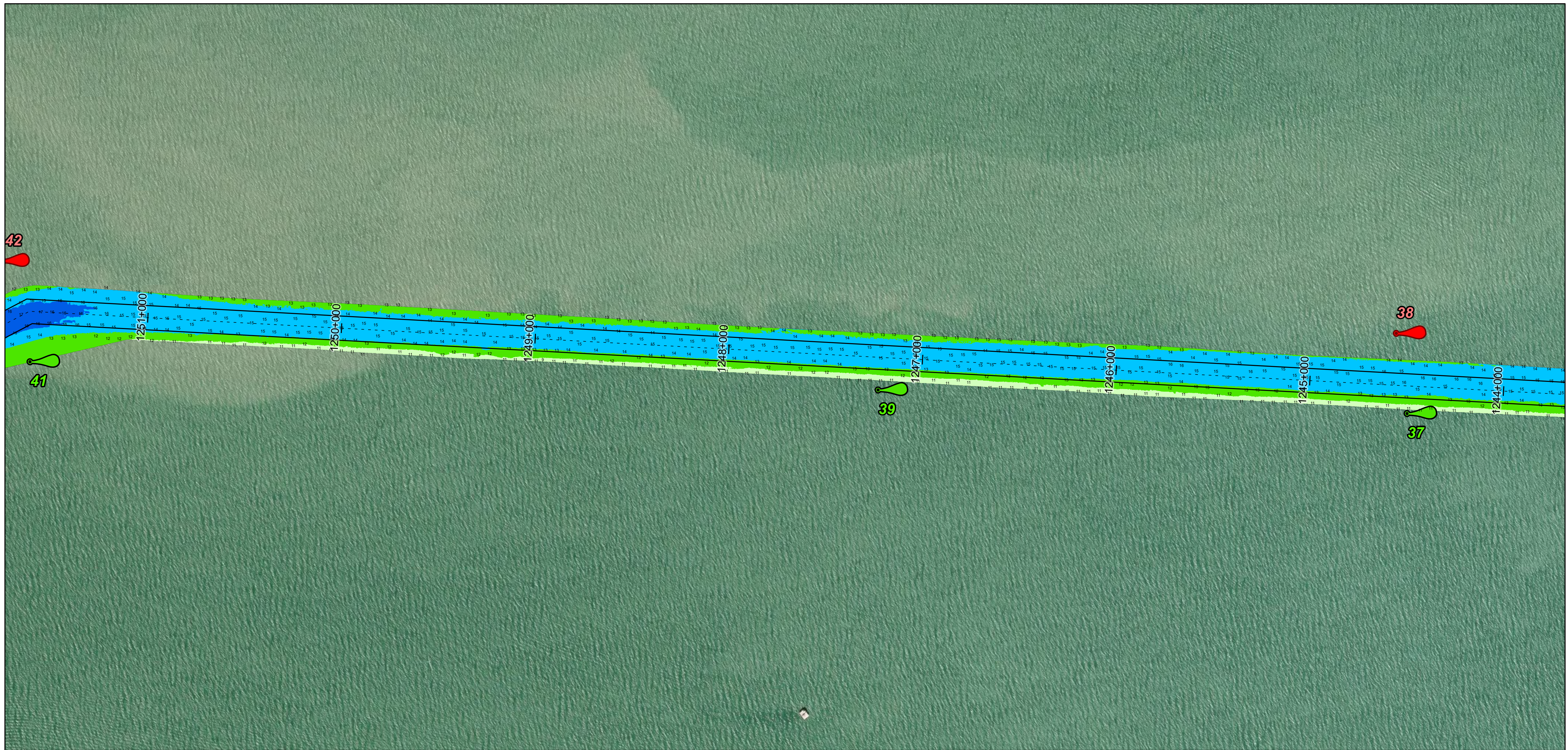
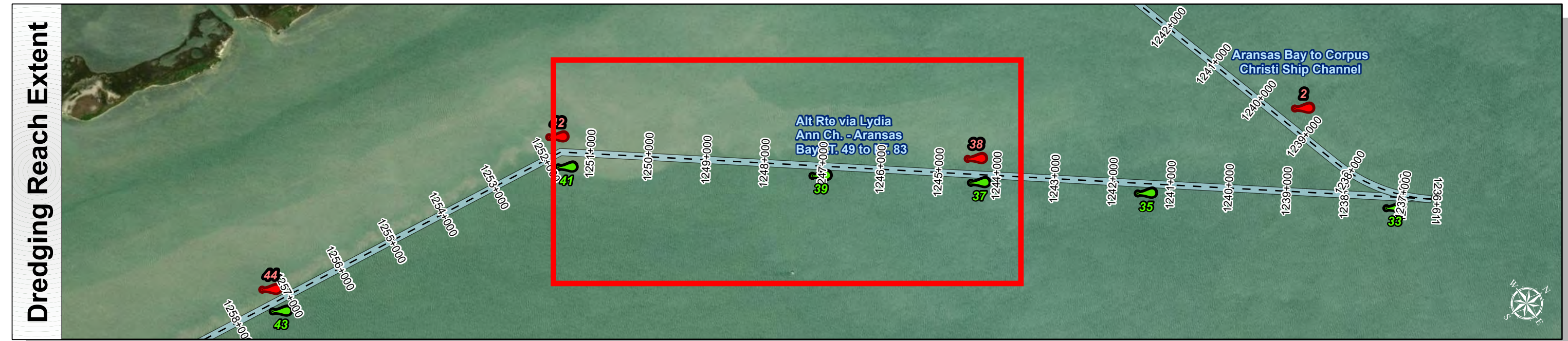
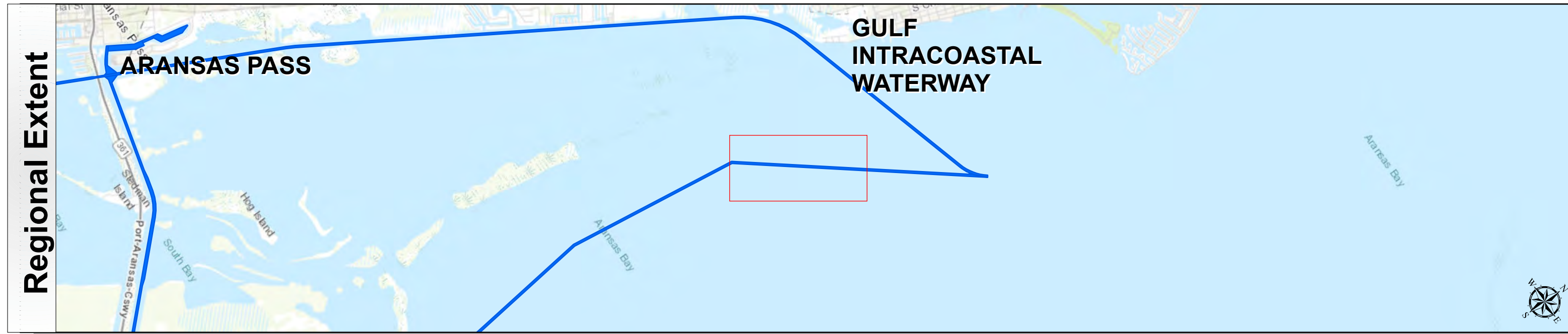
HYDROGRAPHIC SURVEY
 U.S. ARMY ENGINEER DISTRICT
 CORPS OF ENGINEERS
 GALVESTON, TEXAS

Station: 1236+611 to 1278+523.11
GULF INTRACOASTAL WATERWAY
 Alt Rte via Lydia Ann Ch. - Aransas Bay LT. 49 to LT. 83

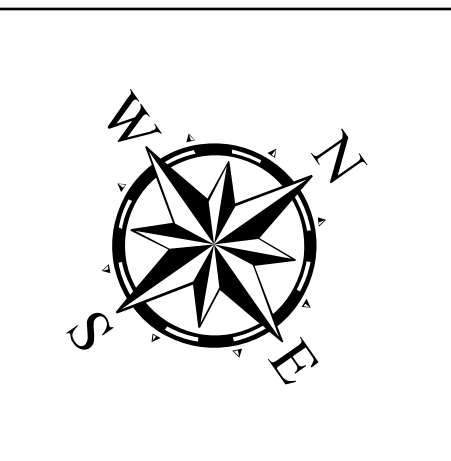
Gulf Intracoastal Waterway: Alt Rte via Lydia Ann Ch. - Aransas Bay LT. 49 to LT. 83



U.S. Army Corps of Engineers
Galveston District



Latest Survey Collection Date: 15 April 2025	Authorized Depth: -14ft.
Document Page: 2 of 6	Width Range: 125ft to 125ft
Scale: 1:3,000	Side Slope Ratio: (Rise : Run)
Mapped by: M3AOXPAC	PDF Print Date: 4/17/2025
Additional Imagery info:	
Website Index Number: 2	



Channel Features	Aids to Navigation	MLLW
--- Channel Center Line	Green Side Aids	0 - 4
— Channel Toe	Red Side Aids	4 - 6
↔ Channel Dimensions	Lights	6 - 8
		8 - 10
		10 - 12
		12 - 14
		14 - 16
		16 - 18
		< 18

NOTES:

- Horizontal coordinates are referenced to Texas State Plane Coordinate System, South Zone NAD83 US Survey Feet.
- Elevations are referenced to Mean Lower Low Water (MLLW) datum.
- This project was designed by the Galveston District of the U.S. Army Corps of Engineers. The initials and signatures and registration designations of individuals appear on these project documents within the scope of their employment as required by er1110-8132.
- The information depicted on this survey map represents the results of surveys made on the dates indicated and can only be considered as indicating the general conditions existing at that time. These conditions are subject to rapid change due to shoaling events. A prudent mariner should not rely exclusively on the information provided here. Required by 33 CFR 209.325
- For the most up to date information please check our website at: <http://www.svg.usace.army.mil/Missions/Navigation/HydrographicSurveys/>

Service Layer Credits: World Topographic Map: Texas Parks & Wildlife, Esri, HERE, Garmin, INCREMENT P, USGS, METINASA, NGA, EPA, USDA
World Imagery: Source: Esri, Maxar, Earthstar Geographics, and the GIS User Community
World Ocean Base: Esri, GEBCO, Garmin, NaturalView

Additional Combined Survey Dates and Stationing:
COMB_SURV_INFO_HERE

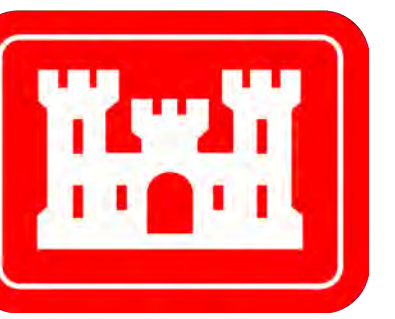
Dredging Reach Extent	
0	0.3 0.6 1.2 Miles
Hydrographic Survey Extent	
0	255 510 1,020 Feet

Coordinate System: NAD 1983 StatePlane Texas South FIPS 4205 Feet Projection: Lambert Conformal Conic
--

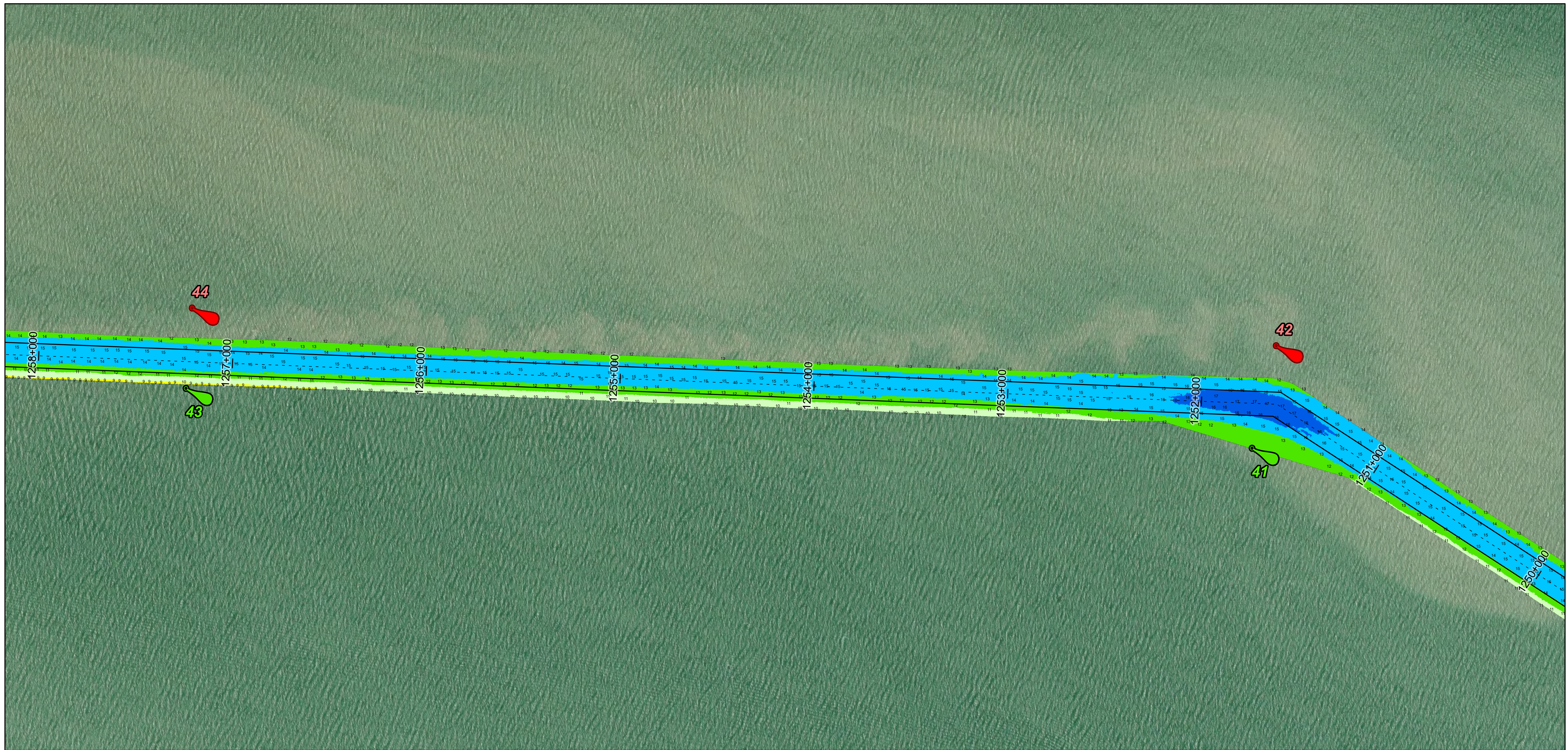
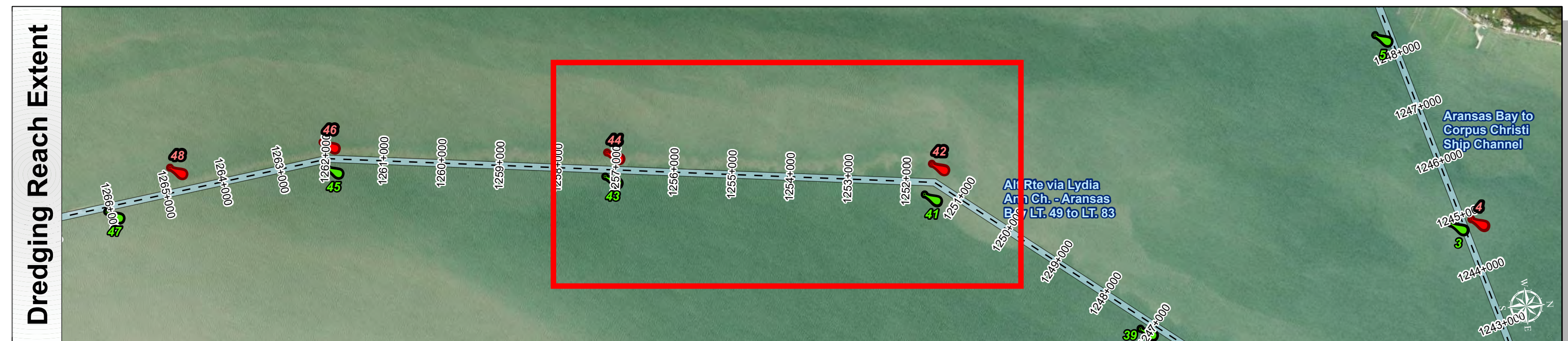
HYDROGRAPHIC SURVEY
U.S. ARMY ENGINEER DISTRICT
CORPS OF ENGINEERS
GALVESTON, TEXAS

Station: 1236+611 to 1278+523.11
GULF INTRACOASTAL WATERWAY
Alt Rte via Lydia Ann Ch. - Aransas Bay LT. 49 to LT. 83

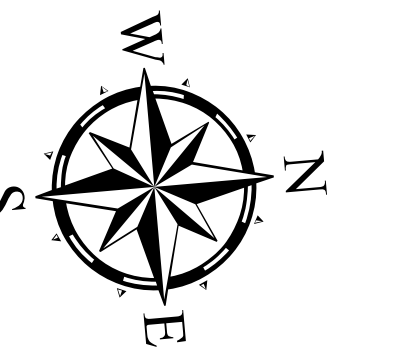
Gulf Intracoastal Waterway: Alt Rte via Lydia Ann Ch. - Aransas Bay LT. 49 to LT. 83



U.S. Army Corps of Engineers
Galveston District



Latest Survey Collection Date: 15 April 2025	Authorized Depth: -14ft.
Document Page: 3 of 6	Width Range: 125ft to 125ft
Scale: 1:3,000	Side Slope Ratio: (Rise : Run)
Mapped by: M3AOXPAC	PDF Print Date: 4/17/2025
Additional Imagery info:	



Channel Features	Aids to Navigation	MLLW
<ul style="list-style-type: none"> --- Channel Center Line — Channel Toe ↔ Channel Dimensions 	<ul style="list-style-type: none"> Green Side Aids Red Side Aids Lights 	<ul style="list-style-type: none"> 0 - 4 4 - 6 6 - 8 8 - 10 10 - 12 12 - 14 14 - 16 16 - 18 < 18

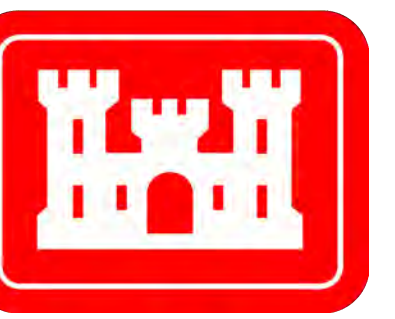
NOTES:
 1. Horizontal coordinates are referenced to Texas State Plane Coordinate System, South Zone NAD83 US Survey Feet.
 2. Elevations are referenced to Mean Lower Low Water (MLLW) datum.
 3. This project was designed by the Galveston District of the U.S. Army Corps of Engineers. The initials and signatures and registration designations of individuals appear on these project documents within the scope of their employment as required by er1110.1-8132.
 4. The information depicted on this survey map represents the results of surveys made on the dates indicated and can only be considered as indicating the general conditions existing at that time. These conditions are subject to rapid change due to shoaling events. A prudent mariner should not rely exclusively on the information provided here. Required by 33 CFR 209.325.
 5. For the most up to date information please check our website at: <http://www.svg.usace.army.mil/Missions/Navigation/HydrographicSurveys/>
 Service Layer Credits: World Topographic Map: Texas Parks & Wildlife, Esri, HERE, Garmin, INCREMENT P, USGS, METINASA, NGA, EPA, USDA
 World Imagery: Source: Esri, Maxar, Earthstar Geographics, and the GIS User Community
 World Ocean Base: Esri, GEBCO, Garmin, NaturalView

Additional Combined Survey Dates and Stationing:
 COMB_SURV_INFO_HERE

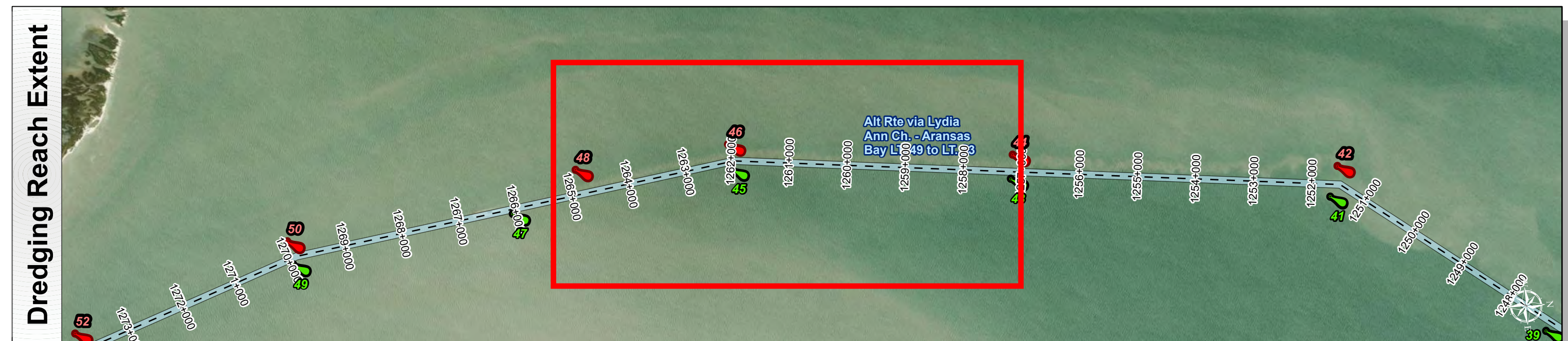
Coordinate System: NAD 1983 StatePlane Texas South FIPS 4205 Feet Projection: Lambert Conformal Conic
Dredging Reach Extent 0 0.3 0.6 1.2 Miles
Hydrographic Survey Extent 0 255 510 1,020 Feet

HYDROGRAPHIC SURVEY
 U.S. ARMY ENGINEER DISTRICT
 CORPS OF ENGINEERS
 GALVESTON, TEXAS
Station: 1236+611 to 1278+523.11
GULF INTRACOASTAL WATERWAY
 Alt Rte via Lydia Ann Ch. - Aransas Bay LT. 49 to LT. 83

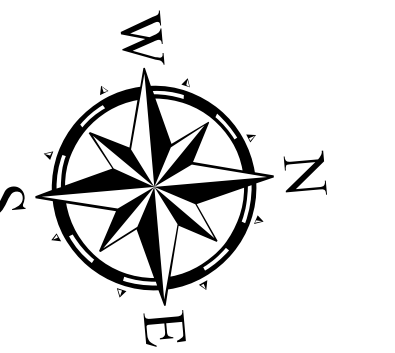
Gulf Intracoastal Waterway: Alt Rte via Lydia Ann Ch. - Aransas Bay LT. 49 to LT. 83



U.S. Army Corps of Engineers
Galveston District



Latest Survey Collection Date: 15 April 2025	Authorized Depth: -14ft.
Document Page: 4 of 6	Width Range: 125ft to 125ft
Scale: 1:3,000	Side Slope Ratio: (Rise : Run)
Mapped by: M3AOXPAC	PDF Print Date: 4/17/2025
Additional Imagery info:	



Channel Features	Aids to Navigation	MLLW
--- Channel Center Line	Green Side Aids	0 - 4
— Channel Toe	Red Side Aids	4 - 6
↔ Channel Dimensions	Lights	6 - 8
		8 - 10
		10 - 12
		12 - 14
		14 - 16
		16 - 18
		< 18

NOTES:
 1. Horizontal coordinates are referenced to Texas State Plane Coordinate System, South Zone NAD83 US Survey Feet.
 2. Elevations are referenced to Mean Lower Low Water (MLLW) datum.
 3. This project was designed by the Galveston District of the U.S. Army Corps of Engineers. The initials and signatures and registration designations of individuals appear on these project documents within the scope of their employment as required by 47 CFR 111.11-18.132.
 4. The information depicted on this survey map represents the results of surveys made on the dates indicated and can only be considered as indicating the general conditions existing at that time. These conditions are subject to rapid change due to shoaling events. A prudent mariner should not rely exclusively on the information provided here. Required by 33 CFR 209.325.
 5. For the most up to date information please check our website at: <http://www.svg.usace.army.mil/Missions/Navigation/HydrographicSurveys/>
 Service Layer Credits: World Topographic Map: Texas Parks & Wildlife, Esri, HERE, Garmin, INCREMENT P, USGS, METINASA, NGA, EPA, USDA
 World Imagery: Source: Esri, Maxar, Earthstar Geographics, and the GIS User Community
 World Ocean Base: Esri, GEBCO, Garmin, NaturalView

Additional Combined Survey Dates and Stationing:
 COMB_SURV_INFO_HERE

Coordinate System: NAD 1983 StatePlane Texas South FIPS 4205 Feet
 Projection: Lambert Conformal Conic

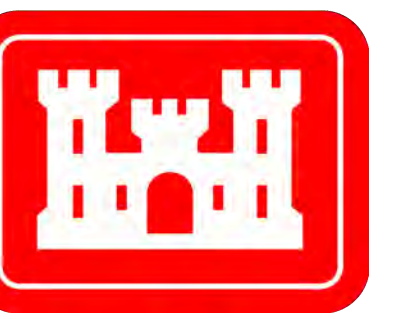
Dredging Reach Extent
 0 0.3 0.6 1.2 Miles

Hydrographic Survey Extent
 0 255 510 1,020 Feet

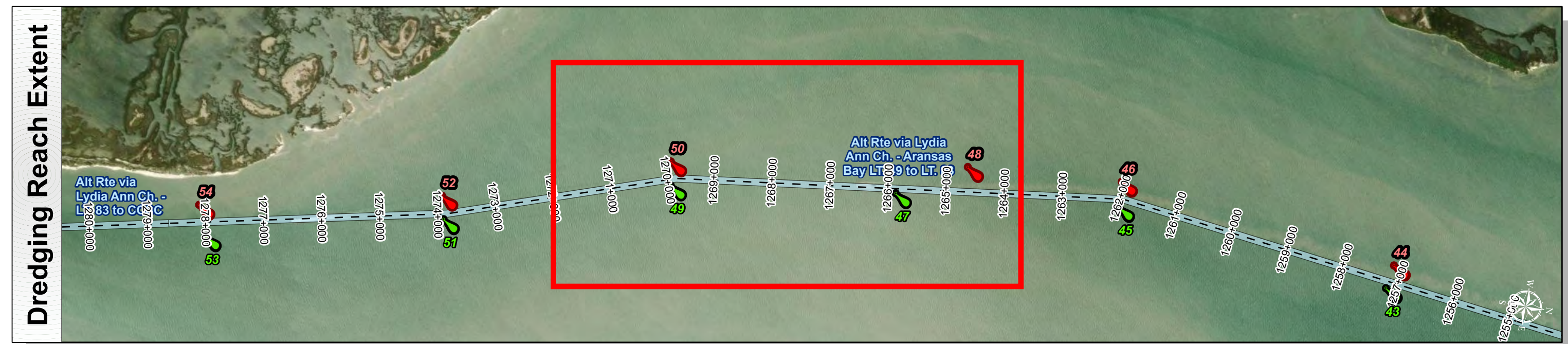
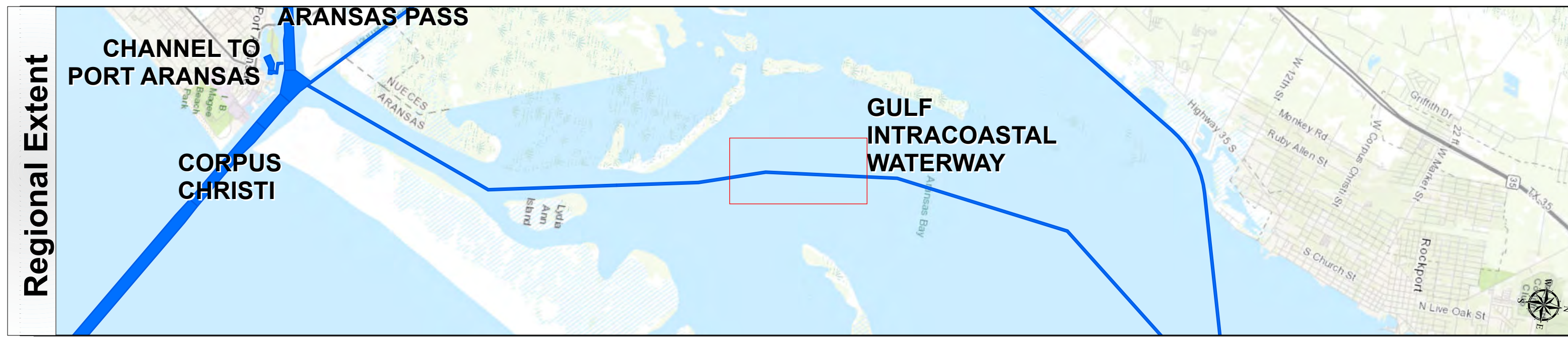
HYDROGRAPHIC SURVEY
 U.S. ARMY ENGINEER DISTRICT
 CORPS OF ENGINEERS
 GALVESTON, TEXAS

Station: 1236+611 to 1278+523.11
GULF INTRACOASTAL WATERWAY
 Alt Rte via Lydia Ann Ch. - Aransas Bay LT. 49 to LT. 83

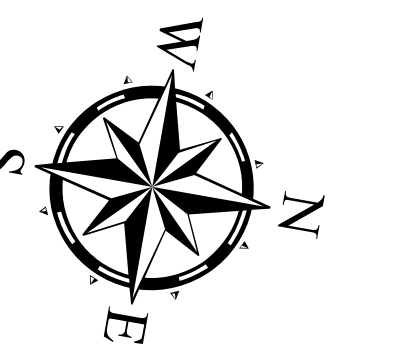
Gulf Intracoastal Waterway: Alt Rte via Lydia Ann Ch. - Aransas Bay LT. 49 to LT. 83



U.S. Army Corps of Engineers
Galveston District



Latest Survey Collection Date: 15 April 2025	Authorized Depth: -14ft.
Document Page: 5 of 6	Width Range: 125ft to 125ft
Scale: 1:3,000	Side Slope Ratio: (Rise : Run)
Mapped by: M3AOXPAC	PDF Print Date: 4/17/2025
Additional Imagery info:	
Website Index Number: 5	



Channel Features	Aids to Navigation	MLLW
<ul style="list-style-type: none"> Channel Center Line Channel Toe Channel Dimensions 	<ul style="list-style-type: none"> Green Side Aids Red Side Aids Lights 	<ul style="list-style-type: none"> 0 - 4 4 - 6 6 - 8 8 - 10 10 - 12 12 - 14 14 - 16 16 - 18 < 18

NOTES:

- Horizontal coordinates are referenced to Texas State Plane Coordinate System, South Zone NAD83 US Survey Feet.
- Elevations are referenced to Mean Lower Low Water (MLLW) datum.
- This project was designed by the Galveston District of the U.S. Army Corps of Engineers. The initials and signatures and registration designations of individuals appear on these project documents within the scope of their employment as required by er1110-1-8132.
- The information depicted on this survey map represents the results of surveys made on the dates indicated and can only be considered as indicating the general conditions existing at that time. These conditions are subject to rapid change due to shoaling events. A prudent mariner should not rely exclusively on the information provided here. Required by 33 CFR 209.325
- For the most up to date information please check our website at: <http://www.svg.usace.army.mil/Missions/Navigation/HydrographicSurveys/>

Service Layer Credits: World Topographic Map: Texas Parks & Wildlife, Esri, HERE, Garmin, INCREMENT P, USGS, METINASA, NGA, EPA, USDA
World Imagery: Source: Esri, Maxar, Earthstar Geographics, and the GIS User Community
World Ocean Base: Esri, GEBCO, Garmin, NaturalVie

Additional Combined Survey Dates and Stationing:
COMB_SURV_INFO_HERE

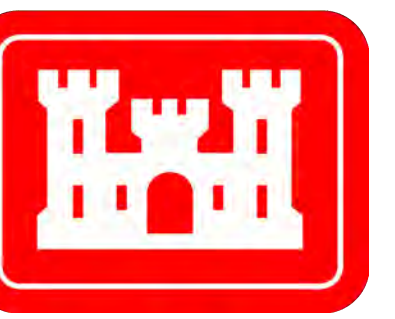
Dredging Reach Extent	
0	0.3 0.6 1.2 Miles
Hydrographic Survey Extent	
0	255 510 1,020 Feet

Coordinate System: NAD 1983 StatePlane Texas South FIPS 4205 Feet
Projection: Lambert Conformal Conic

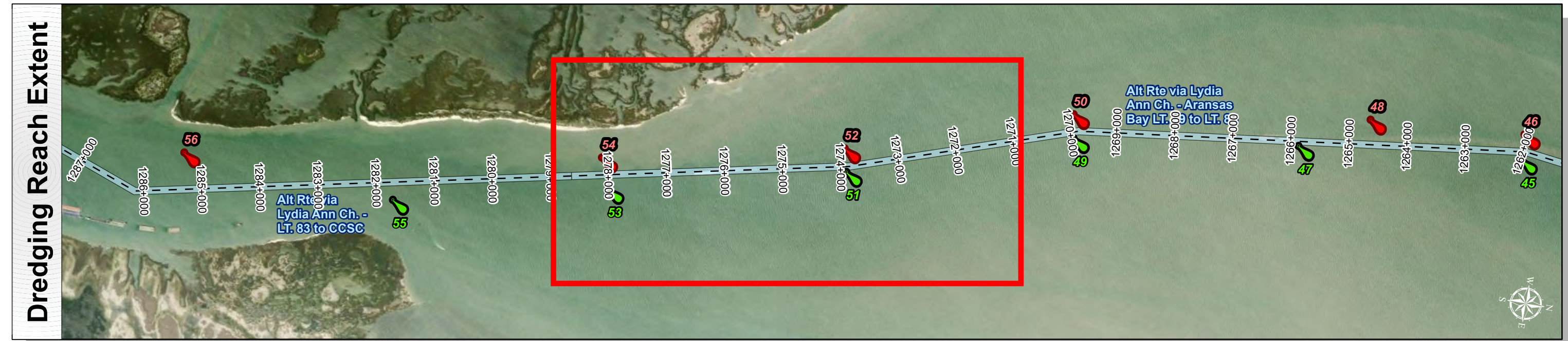
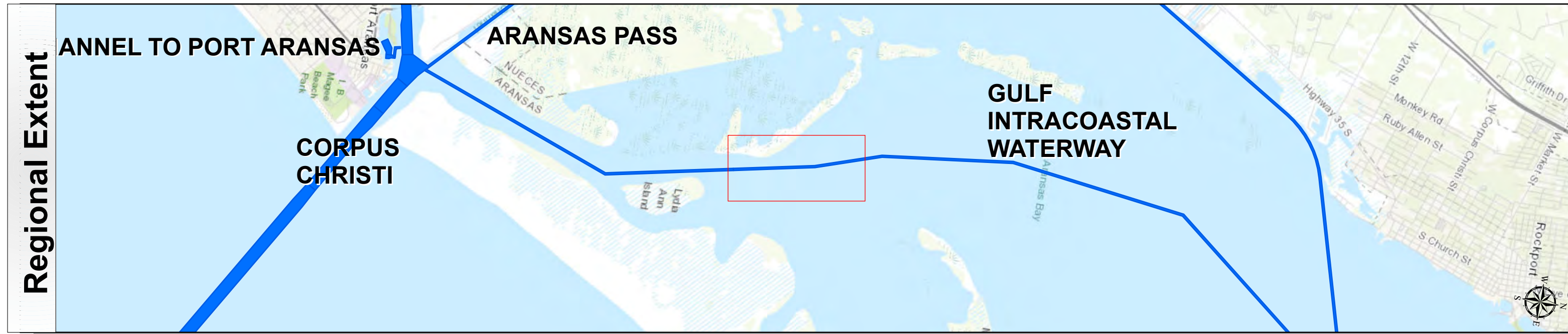
HYDROGRAPHIC SURVEY
U.S. ARMY ENGINEER DISTRICT
CORPS OF ENGINEERS
GALVESTON, TEXAS

Station: 1236+611 to 1278+523.11
GULF INTRACOASTAL WATERWAY
Alt Rte via Lydia Ann Ch. - Aransas Bay LT. 49 to LT. 83

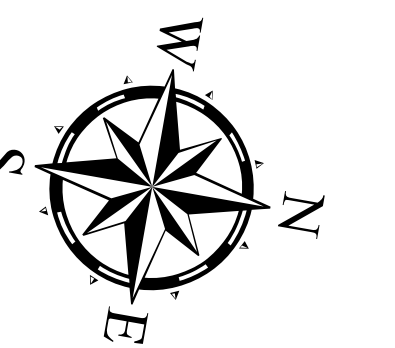
Gulf Intracoastal Waterway: Alt Rte via Lydia Ann Ch. - Aransas Bay LT. 49 to LT. 83



U.S. Army Corps of Engineers
Galveston District



Latest Survey Collection Date: 15 April 2025	Authorized Depth: -14ft.
Document Page: 6 of 6	Width Range: 125ft to 125ft
Scale: 1:3,000	Side Slope Ratio: (Rise : Run)
Mapped by: M3AOXPAC	PDF Print Date: 4/17/2025
Additional Imagery info:	
Website Index Number: 6	



Channel Features	Aids to Navigation	MLLW
<ul style="list-style-type: none"> --- Channel Center Line — Channel Toe ↔ Channel Dimensions 	<ul style="list-style-type: none"> Green Side Aids Red Side Aids Lights 	<ul style="list-style-type: none"> 0 - 4 4 - 6 6 - 8 8 - 10 10 - 12 12 - 14 14 - 16 16 - 18 < 18

NOTES:
 1. Horizontal coordinates are referenced to Texas State Plane Coordinate System, South Zone NAD83 US Survey Feet.
 2. Elevations are referenced to Mean Lower Low Water (MLLW) datum.
 3. This project was designed by the Galveston District of the U.S. Army Corps of Engineers. The initials and signatures and registration designations of individuals appear on these project documents within the scope of their employment as required by 47 CFR 111.111-18.132.
 4. The information depicted on this survey map represents the results of surveys made on the dates indicated and can only be considered as indicating the general conditions existing at that time. These conditions are subject to rapid change due to shoaling events. A prudent mariner should not rely exclusively on the information provided here. Required by 33 CFR 209.325.
 5. For the most up to date information please check our website at: <http://www.svg.usace.army.mil/Missions/Navigation/HydrographicSurveys/>
 Service Layer Credits: World Topographic Map: Texas Parks & Wildlife, Esri, HERE, Garmin, INCREMENT P, USGS, METINASA, NGA, EPA, USDA
 World Imagery: Source: Esri, Maxar, Earthstar Geographics, and the GIS User Community
 World Ocean Base: Esri, GEBCO, Garmin, NaturalVie

Additional Combined Survey Dates and Stationing: COMB_SURV_INFO_HERE	Coordinate System: NAD 1983 StatePlane Texas South FIPS 4205 Feet Projection: Lambert Conformal Conic
Dredging Reach Extent 0 0.3 0.6 1.2 Miles	Hydrographic Survey Extent 0 255 510 1,020 Feet

HYDROGRAPHIC SURVEY
 U.S. ARMY ENGINEER DISTRICT
 CORPS OF ENGINEERS
 GALVESTON, TEXAS

Station: 1236+611 to 1278+523.11
GULF INTRACOASTAL WATERWAY
 Alt Rte via Lydia Ann Ch. - Aransas Bay LT. 49 to LT. 83