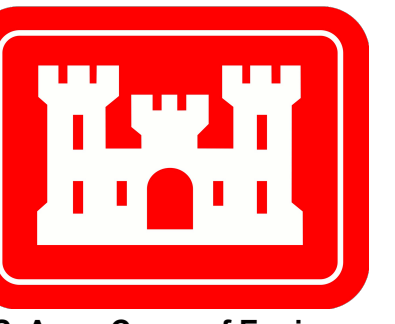
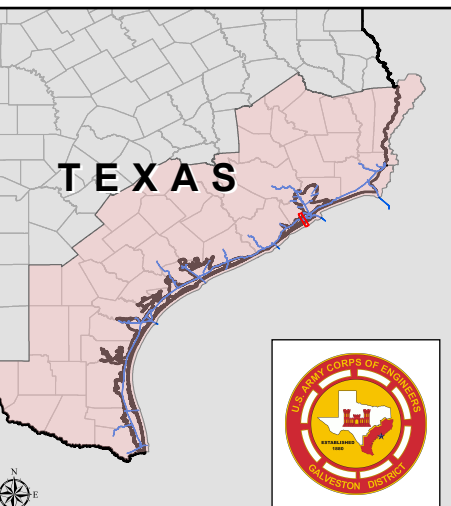


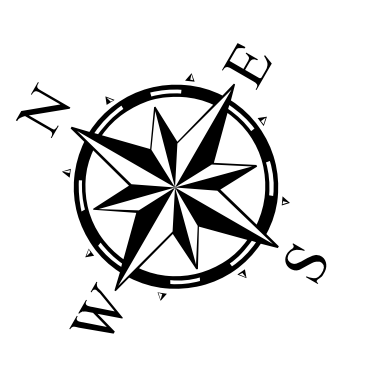
Offats Bayou Channel: Offats Bayou Channel



U.S. Army Corps of Engineers
Galveston District



Latest Survey Collection Date: 25 March 2025	Authorized Depth: -13ft.
Document Page: 1 of 3	Side Slope Ratio: (Rise : Run)
Scale: 1:2,400	PDF Print Date: 4/23/2025
Mapped by: m3odnbdg	
Additional Imagery info:	



Channel Features

- Channel Center Line
- Channel Toe
- Channel Dimensions

Aids to Navigation

- Green Side Aids
- Red Side Aids
- Lights

MLLW

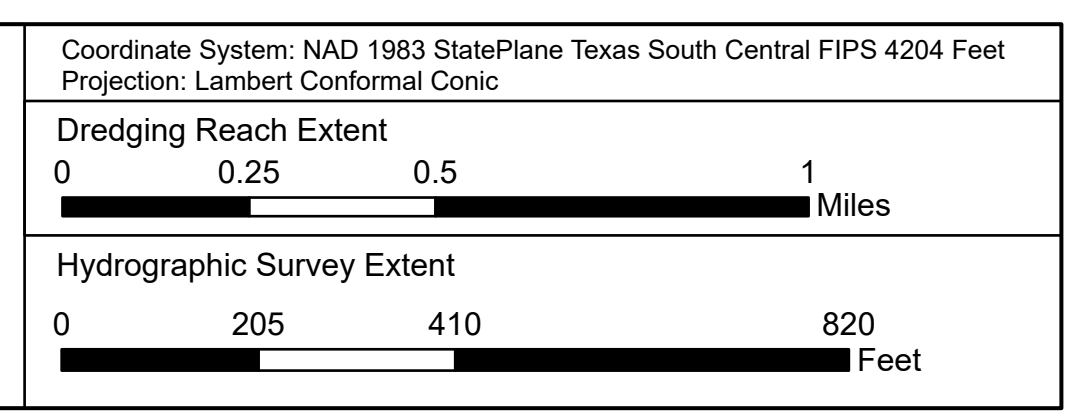
0 - 3	3 - 5	5 - 7	7 - 9	9 - 11	11 - 13	13 - 15	15 - 17	< 17
-------	-------	-------	-------	--------	---------	---------	---------	------

NOTES:

- Horizontal coordinates are referenced to Texas State Plane Coordinate System, South Central Zone NAD83 US Survey Feet.
- Elevations are referenced to Mean Lower Low Water (MLLW) datum.
- This project was designed by the Galveston District of the U.S. Army Corps of Engineers. The initials and signatures and registration designations of individuals appear on these project documents within the scope of their employment as required by 47 CFR 117.11-1, 117.11-2.
- The information depicted on this survey map represents the results of surveys made on the dates indicated and can only be considered as indicating the general conditions existing at that time. These conditions are subject to rapid change due to shoaling events. A prudent mariner should not rely exclusively on the information provided here. Required by 33 CFR 209.325
- For the most up to date information please check our website at: <http://www.svg.usace.army.mil/Missions/Navigation/HydrographicSurveys/>

Service Layer Credits: World Topographic Map: Texas Parks & Wildlife, Esri, HERE, Garmin, INCREMENT P, USGS, METINASA, NGA, EPA, USDA
World Imagery: Source: Esri, Maxar, Earthstar, Geographics, and the GIS User Community
World Imagery: Maxar, Microsoft

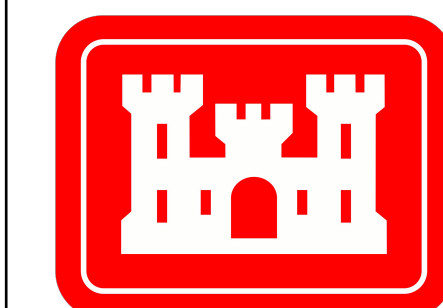
Additional Combined Survey Dates and Stationing:
COMB_SURV_INFO_HERE



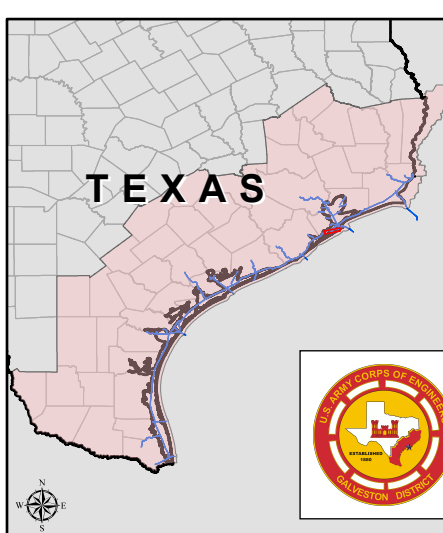
HYDROGRAPHIC SURVEY
U.S. ARMY ENGINEER DISTRICT
CORPS OF ENGINEERS
GALVESTON, TEXAS

Station: 24+32.53 to 140+00
OFFATS BAYOU
Offats Bayou Channel

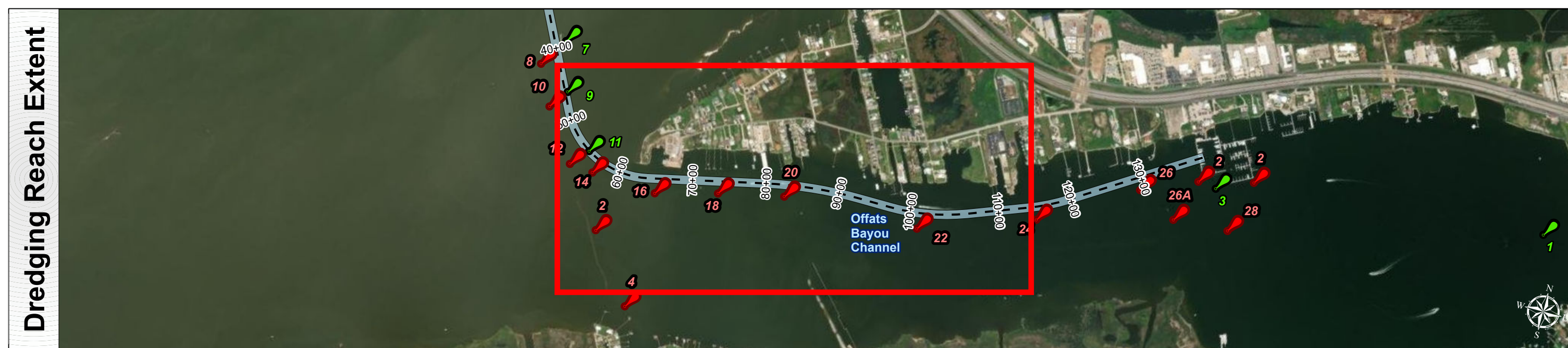
Offats Bayou Channel: Offats Bayou Channel



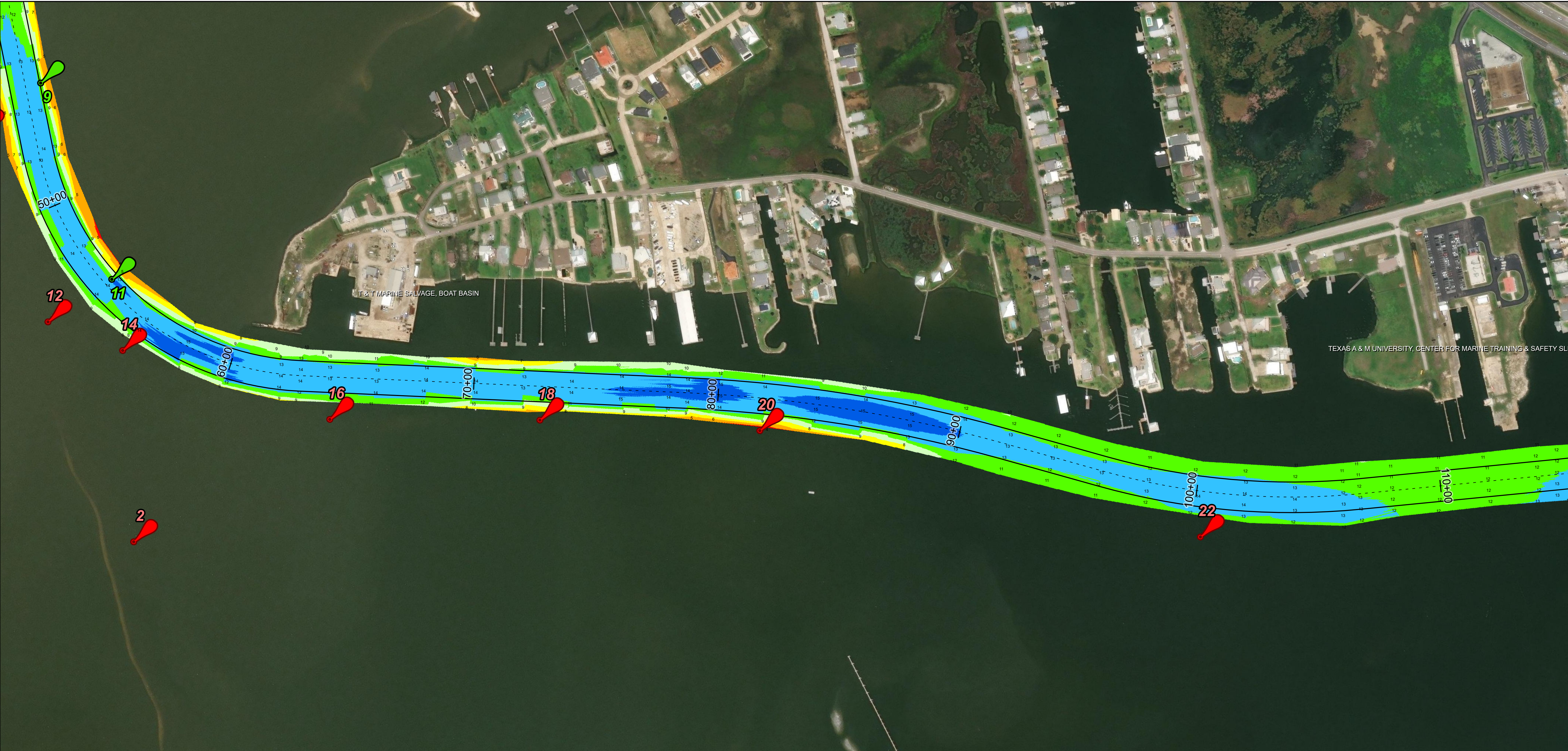
U.S. Army Corps of Engineers
Galveston District



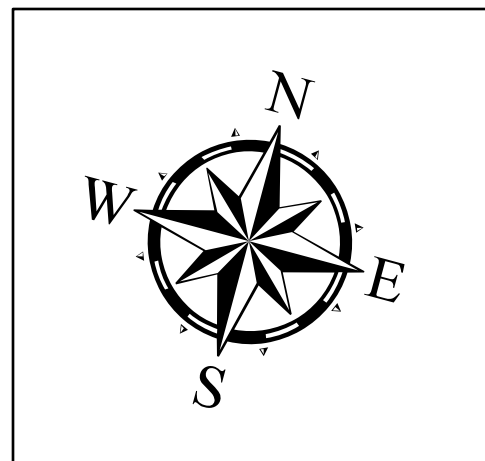
Regional Extent



Dredging Reach Extent



Latest Survey Collection Date: 25 March 2025	Authorized Depth: -13ft.
Document Page: 2 of 3	Side Slope Ratio: (Rise : Run)
Scale: 1:2,400	PDF Print Date: 4/23/2025
Mapped by: m3odnbdg	
Additional Imagery info:	



Channel Features

- Channel Center Line
- Channel Toe
- Channel Dimensions

Aids to Navigation

- Green Side Aids
- Red Side Aids
- Lights

MLLW

0 - 3	3 - 5	5 - 7	7 - 9	9 - 11	11 - 13	13 - 15	15 - 17	< 17
-------	-------	-------	-------	--------	---------	---------	---------	------

NOTES:

- Horizontal coordinates are referenced to Texas State Plane Coordinate System, South Central Zone NAD83 US Survey Feet.
- Elevations are referenced to Mean Lower Low Water (MLLW) datum.
- This project was designed by the Galveston District of the U.S. Army Corps of Engineers. The initials and signatures and registration designations of individuals appear on these project documents within the scope of their employment as required by 47CFR 117.11-1, 117.12.
- The information depicted on this survey map represents the results of surveys made on the dates indicated and can only be considered as indicating the general conditions existing at that time. These conditions are subject to rapid change due to shoaling events. A prudent mariner should not rely exclusively on the information provided here. Required by 33 CFR 209.325
- For the most up to date information please check our website at: <http://www.svg.usace.army.mil/Missions/Navigation/HydrographicSurveys/>

Service Layer Credits: World Topographic Map: Texas Parks & Wildlife, Esri, HERE, Garmin, INCREMENT P, USGS, METINASA, NGA, EPA, USDA
World Imagery: Source: Esri, Maxar, Earthstar, Geographics, and the GIS User Community
World Imagery: Maxar, Microsoft

Additional Combined Survey Dates and Stationing:
COMB_SURV_INFO_HERE

Dredging Reach Extent

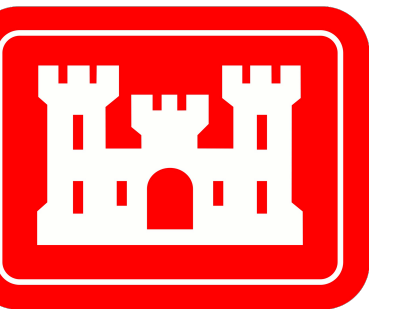
Hydrographic Survey Extent

Coordinate System: NAD 1983 StatePlane Texas South Central FIPS 4204 Feet
Projection: Lambert Conformal Conic

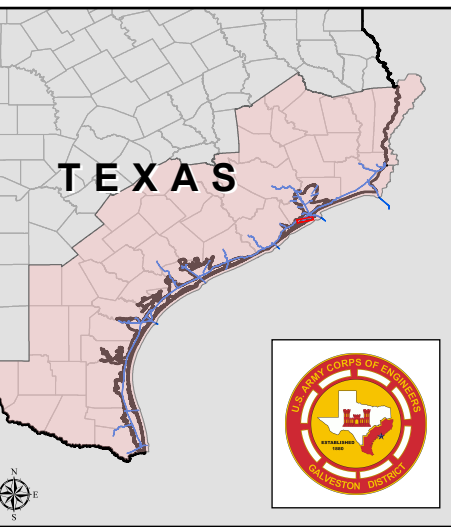
HYDROGRAPHIC SURVEY
U.S. ARMY ENGINEER DISTRICT
CORPS OF ENGINEERS
GALVESTON, TEXAS

Station: 24+32.53 to 140+00
Offats Bayou Channel

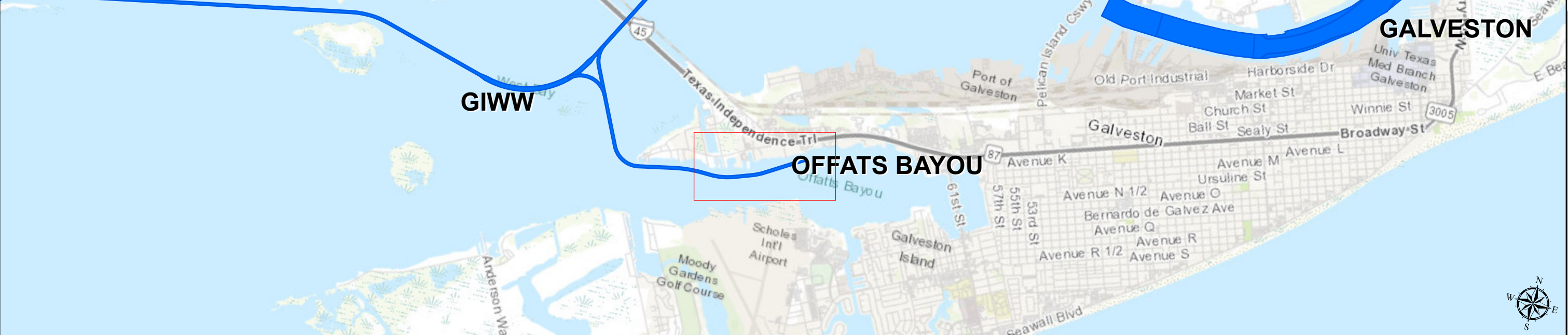
Offats Bayou Channel: Offats Bayou Channel



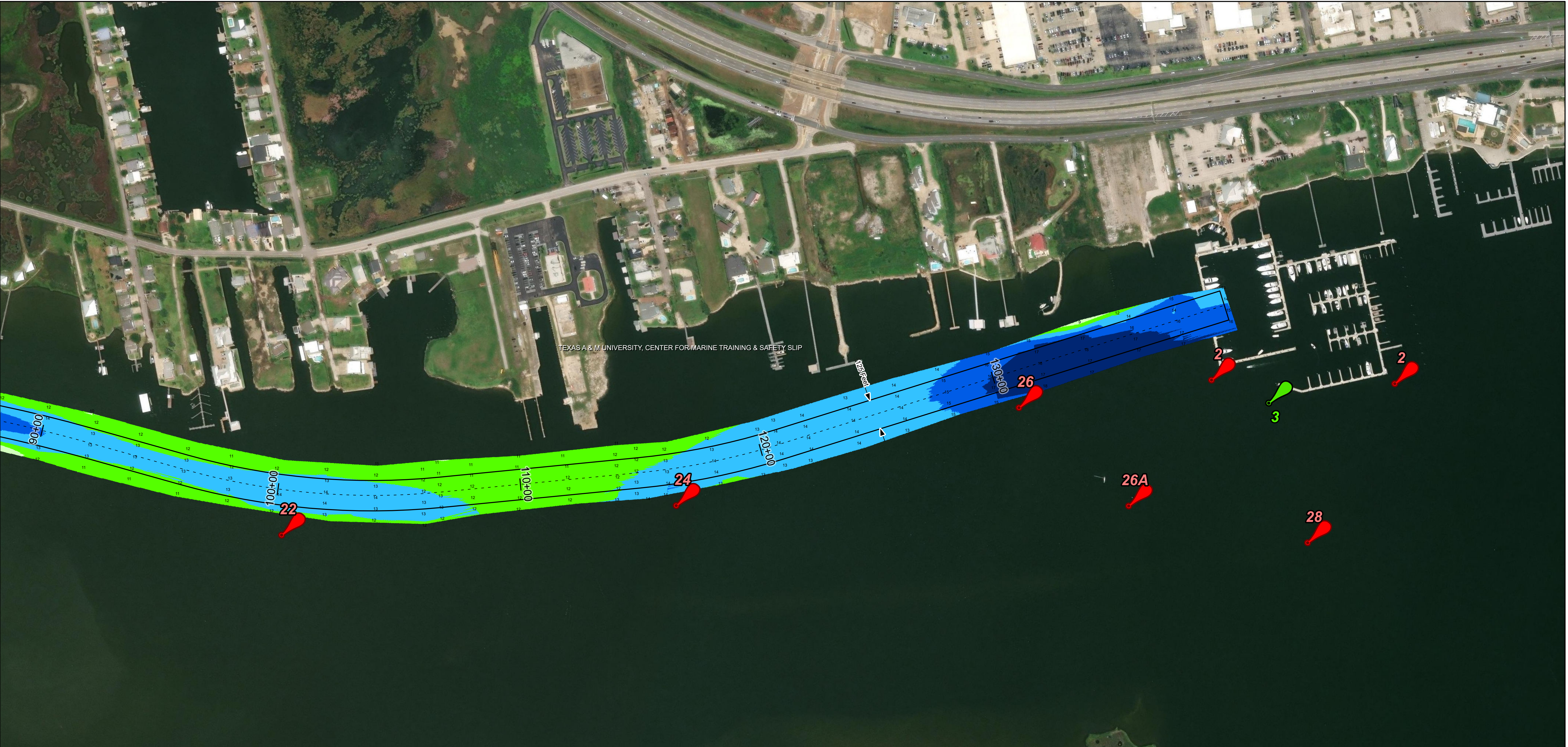
U.S. Army Corps of Engineers
Galveston District



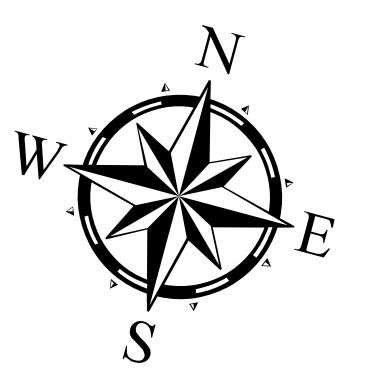
Regional Extent



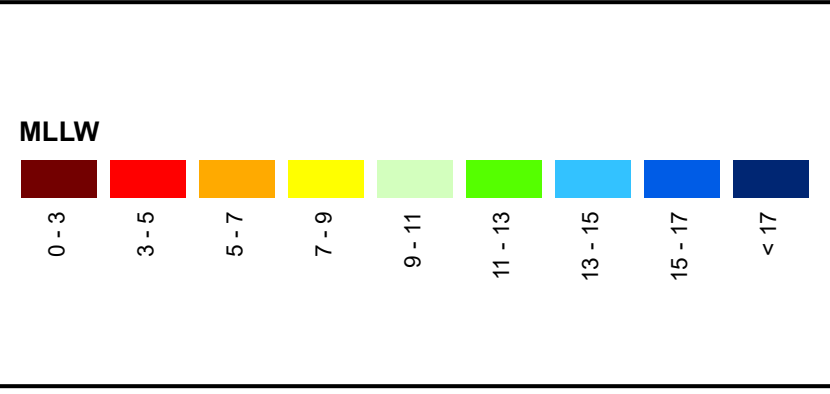
Dredging Reach Extent



Latest Survey Collection Date: 25 March 2025	Authorized Depth: -13ft.
Document Page: 3 of 3	Side Slope Ratio: (Rise : Run)
Scale: 1:2,400	PDF Print Date: 4/23/2025
Mapped by: m3odnbdg	
Additional Imagery info:	

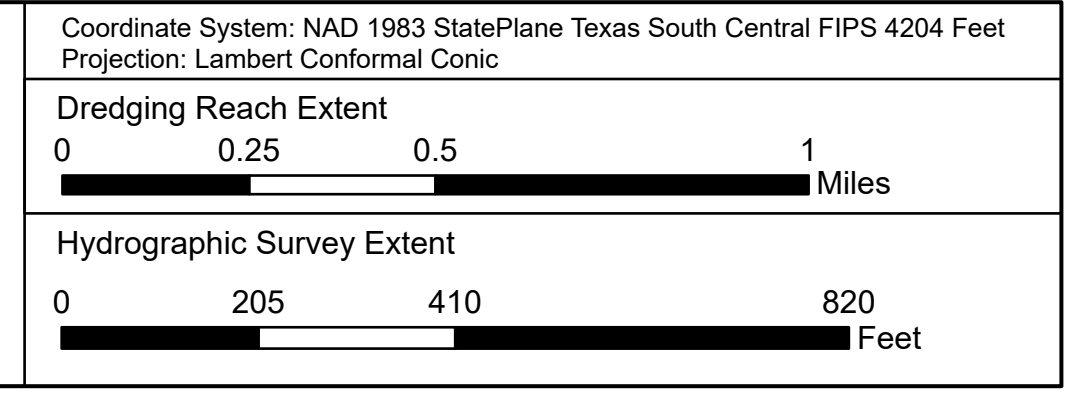


Channel Features	Aids to Navigation
--- Channel Center Line	Green Side Aids
— Channel Toe	Red Side Aids
↔ Channel Dimensions	Lights



NOTES:
 1. Horizontal coordinates are referenced to Texas State Plane Coordinate System, South Central Zone NAD83 US Survey Feet.
 2. Elevations are referenced to Mean Lower Low Water (MLLW) datum.
 3. This project was designed by the Galveston District of the U.S. Army Corps of Engineers. The initials and signatures and registration designations of individuals appear on these project documents within the scope of their employment as required by er1110-6132.
 4. The information depicted on this survey map represents the results of surveys made on the dates indicated and can only be considered as indicating the general conditions existing at that time. These conditions are subject to rapid change due to shoaling events. A prudent mariner should not rely exclusively on the information provided here. Required by 33 CFR 209.325.
 5. For the most up to date information please check our website at: <http://www.svg.usace.army.mil/Missions/Navigation/HydrographicSurveys/>
 Service Layer Credits: World Topographic Map: Texas Parks & Wildlife, Esri, HERE, Garmin, INCREMENT P, USGS, METINASA, NGA, EPA, USDA
 World Imagery: Source: Esri, Maxar, Earthstar, Geographics, and the GIS User Community
 World Imagery: Maxar, Microsoft

Additional Combined Survey Dates and Stationing:
 COMB_SURV_INFO_HERE



HYDROGRAPHIC SURVEY
 U.S. ARMY ENGINEER DISTRICT
 CORPS OF ENGINEERS
 GALVESTON, TEXAS
Station: 24+32.53 to 140+00
 OFFATS BAYOU
 Offats Bayou Channel