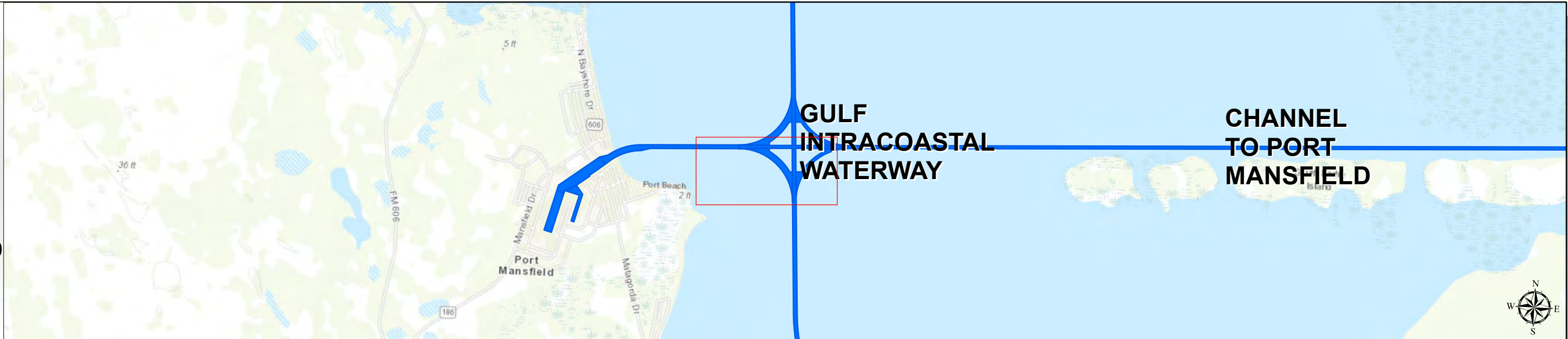


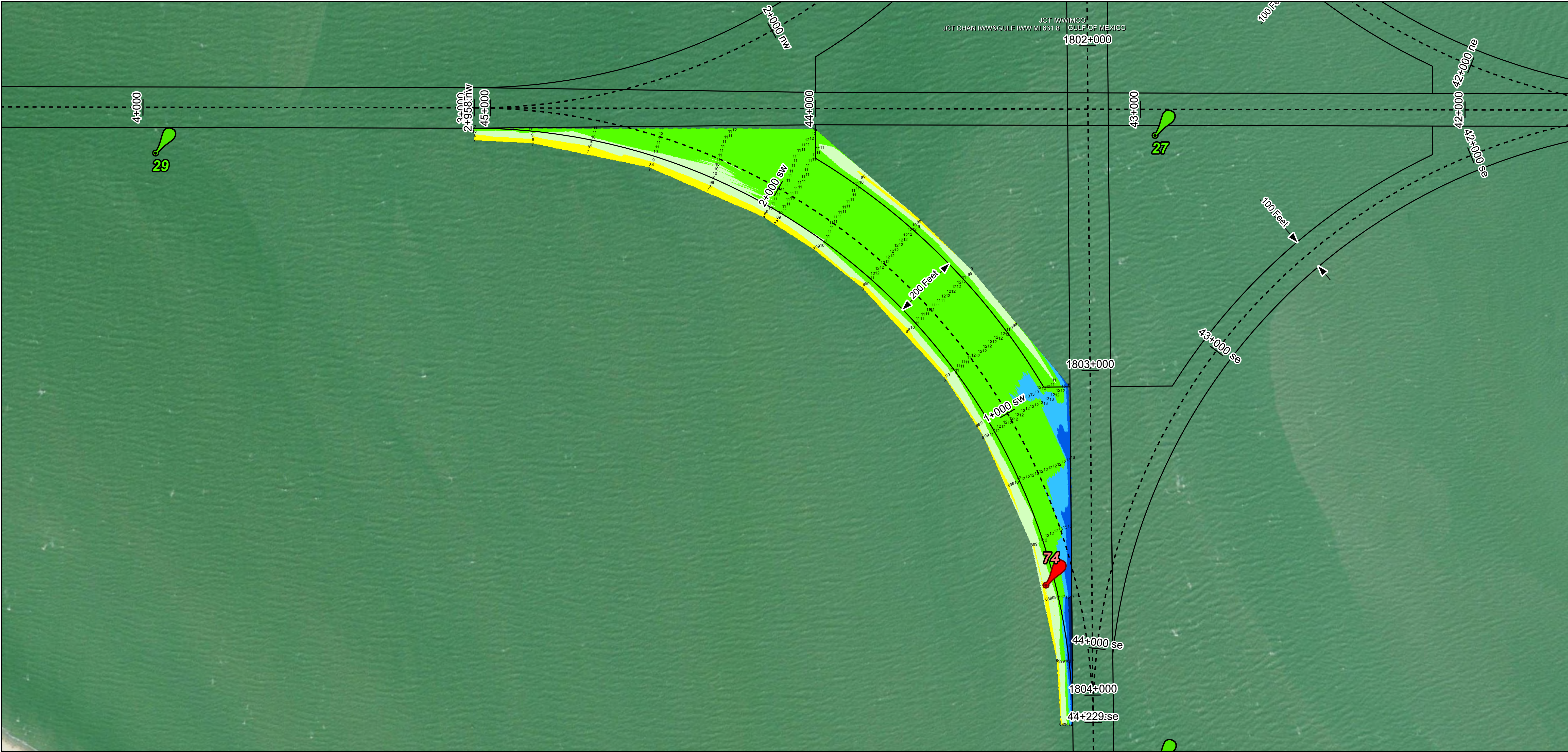
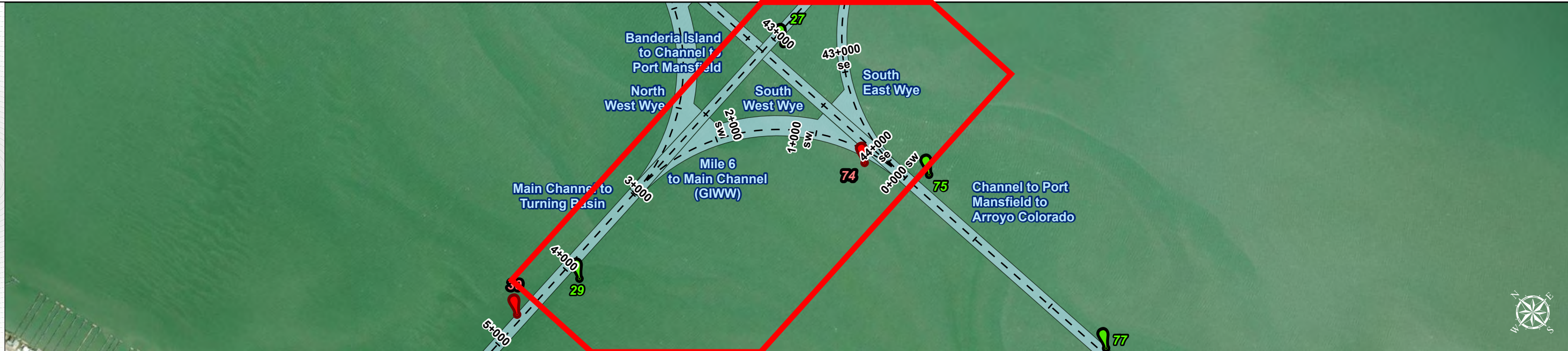
# Channel to Port Mansfield: South West Wye



Regional Extent



Dredging Reach Extent



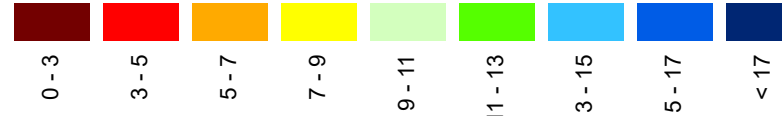
Channel Features

- Channel Center Line
- Channel Toe
- Channel Station Lines
- Channel Dimensions

Aids to Navigation

- Green Side Aids
- Red Side Aids
- Lights

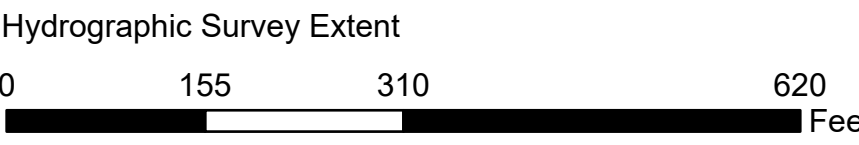
LWD



NOTES:  
1. Horizontal coordinates are referenced to Texas state plane coordinate system, south central zone nad83 us survey feet.  
2. Elevations are referenced to low water depth (LWD) datum.  
3. This project was designed by the Galveston District of the U.S. Army Corps of Engineers. The initials and signatures and registration designations of individuals appear on these project documents within the scope of their employment as required by 47 CFR 111.01-01152.  
4. The information depicted on this survey map represents the results of surveys made on the dates indicated and can only be considered as indicating the general conditions existing at that time. These conditions are subject to rapid change due to shoaling events. A prudent mariner should not rely exclusively on the information provided here. Required by 33 CFR 209.325.  
5. For the most up to date information please check our website at: <http://www.svg.usace.army.mil/Missions/Navigation/HydrographicSurveys/>  
Service Layer Credits: World Topographic Map: Texas Parks & Wildlife, Esri, HERE, Garmin, INCREMENT P, USGS, METINASA, NGA, EPA, USDA  
World Ocean Base: Esri, GEBCO, DeLorme, NaturalVue  
World Imagery: Maxar, Microsoft  
World Imagery: Maxar

Additional Combined Survey Dates and Stationing:  
COMB\_SURV\_INFO\_HERE

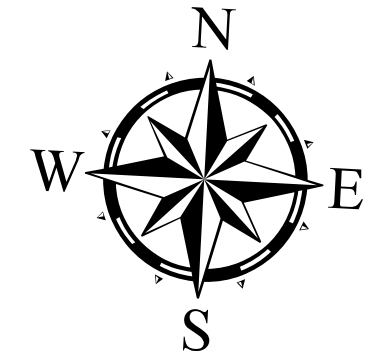
Coordinate System: NAD 1983 StatePlane Texas South FIPS 4205 Feet  
Projection: Lambert Conformal Conic



HYDROGRAPHIC SURVEY

U.S. ARMY ENGINEER DISTRICT  
CORPS OF ENGINEERS  
GALVESTON, TEXAS

Station: 0+000 SW to 2+980 SW  
CHANNEL TO PORT MANSFIELD  
South West Wye



Latest Survey Collection Date: 09 March 2023

Document Page: 1 of 1

Website Index Number: 15

Scale: 1:1,800

Mapped by: M3AOXPAC

Additional Imagery info:

Authorized Depth: -13ft.

Side Slope Ratio: 1:3 (Rise : Run)

PDF Print Date: 3/10/2023