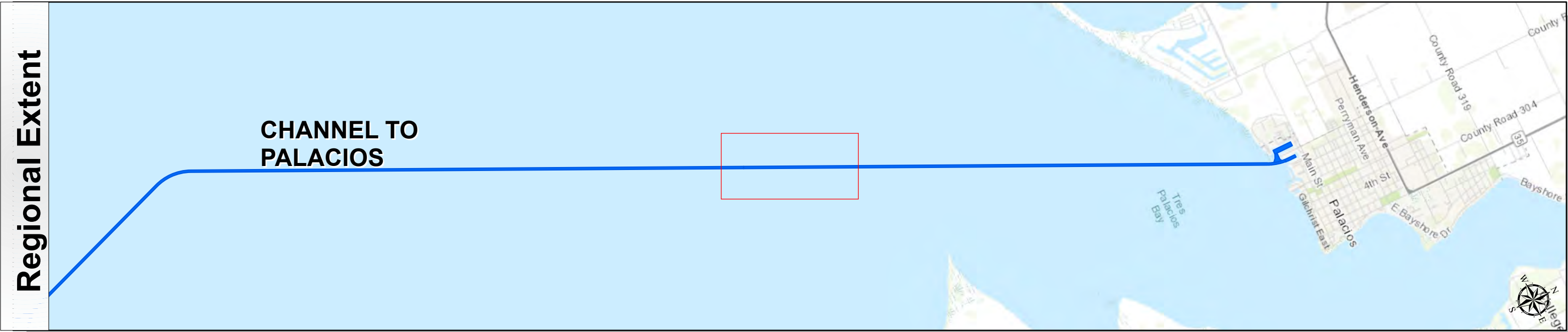
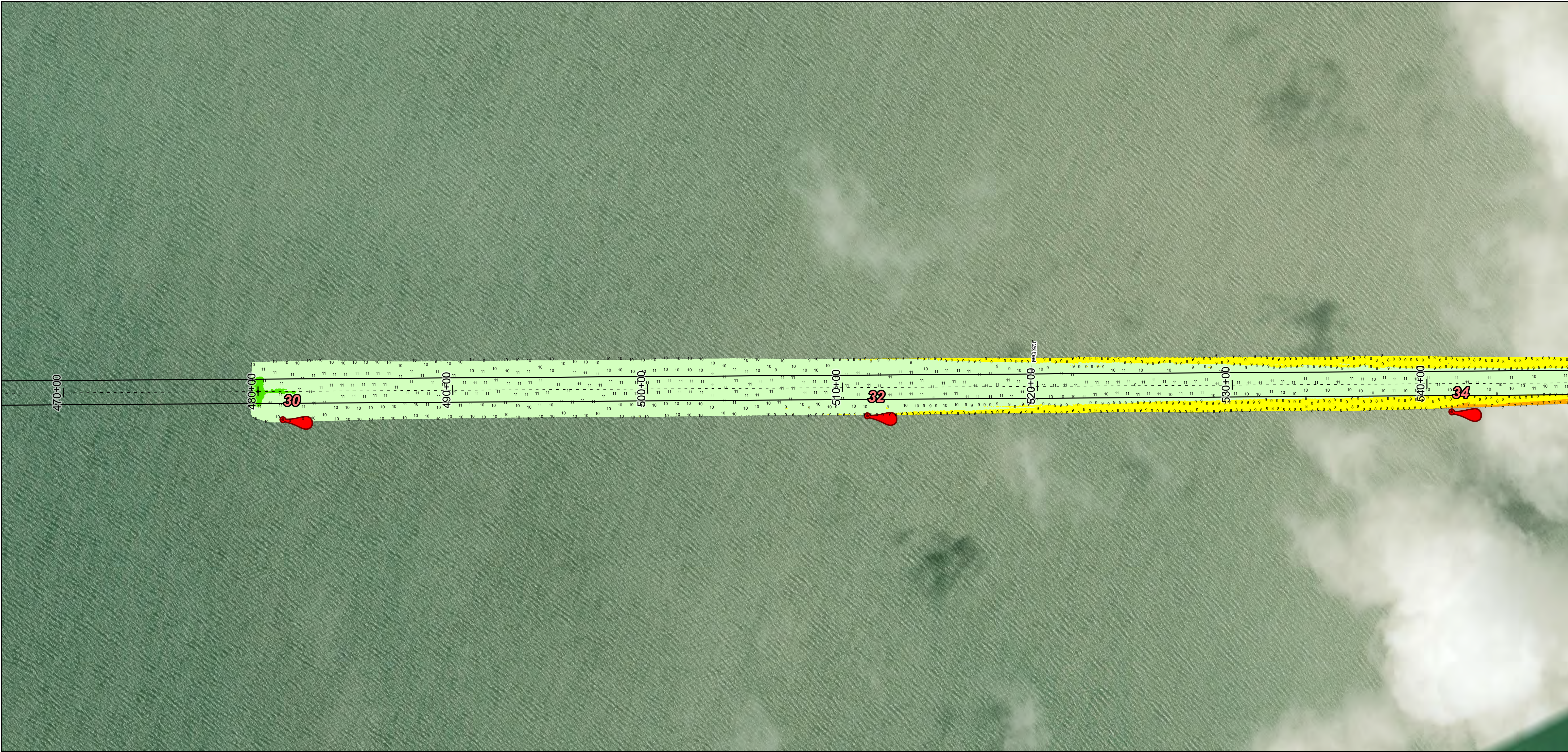


Channel to Palacios: Light 40 to City Basin



U.S. Army Corps of Engineers
Galveston District



Channel Features

- Channel Center Line
- Channel Toe
- Channel Dimensions

Aids to Navigation

- Green Side Aids
- Red Side Aids
- Lights

MLLW

0 - 4	4 - 6	6 - 8	8 - 10	10 - 12	12 - 14	14 - 16	16 - 18	< 18
-------	-------	-------	--------	---------	---------	---------	---------	------

NOTES:

- Horizontal coordinates are referenced to Texas State Plane Coordinate System, South Central Zone NAD83 US Survey Feet.
- Elevations are referenced to Mean Lower Low Water (MLLW) datum.
- This project was designed by the Galveston District of the U.S. Army Corps of Engineers. The initials and signatures and registration designations of individuals appear on these project documents within the scope of their employment as required by 47CFR110.1-41.02.
- The information depicted on this survey map represents the results of surveys made on the dates indicated and can only be considered as indicating the general conditions existing at that time. These conditions are subject to rapid change due to shoaling events. A prudent mariner should not rely exclusively on the information provided here. Required by 33 CFR 209.325
- For the most up to date information please check our website at: <http://www.svg.usace.army.mil/Missions/Navigation/HydrographicSurveys/>

Service Layer Credits: World Topographic Map: Texas Parks & Wildlife, Esri, HERE, Garmin, INCREMENT P, USGS, METI/NASA, NGA, EPA, USDA, World Imagery, Maxar, World Ocean Base, Esri, GEBCO, Garmin, NaturalVue

Additional Combined Survey Dates and Stationing:

COMB_SURV_INFO_HERE

Coordinate System: NAD 1983 StatePlane Texas South Central FIPS 4204 Feet
Projection: Lambert Conformal Conic

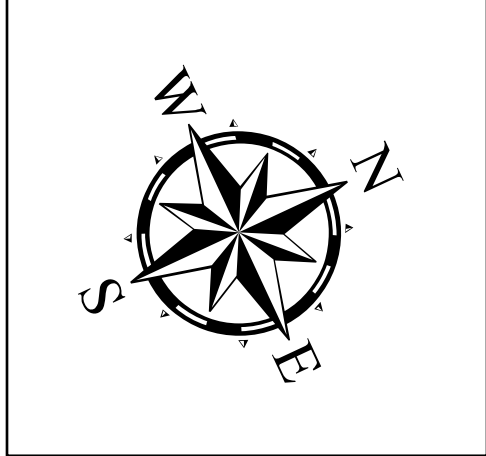
Dredging Reach Extent

0 0.3 0.6 1.2 Miles

Hydrographic Survey Extent

0 255 510 1,020 Feet

Latest Survey Collection Date: 23 December 2024		Authorized Depth: -14ft.
Document Page: 1 of 6	Website Index Number: 10	Side Slope Ratio: (Rise : Run)
Scale: 1:3,000		PDF Print Date: 12/26/2024
Mapped by: m3odnmh		
Additional Imagery info:		



HYDROGRAPHIC SURVEY

U.S. ARMY ENGINEER DISTRICT
CORPS OF ENGINEERS
GALVESTON, TEXAS

Station: 480+00 to 798+00

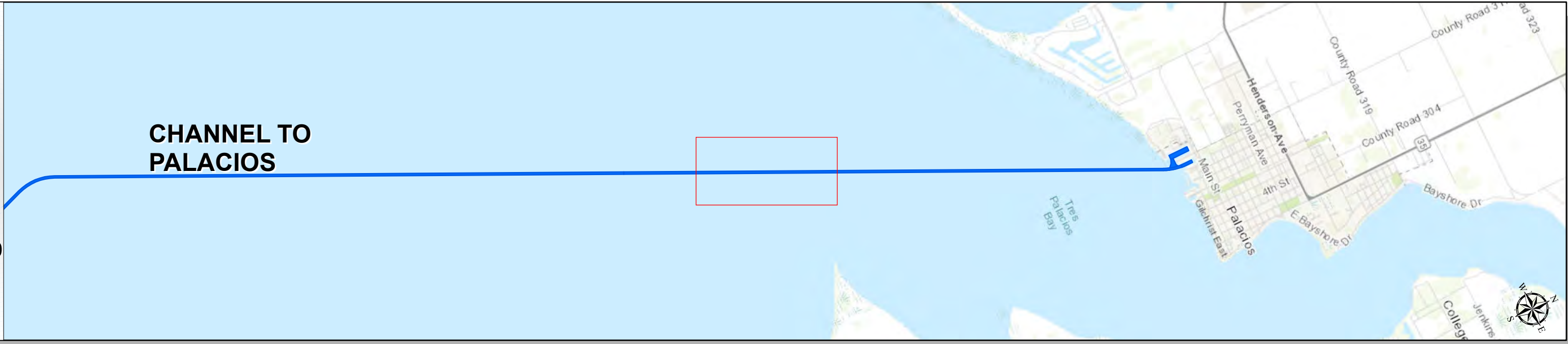
CHANNEL TO PALACIOS

Light 40 to City Basin

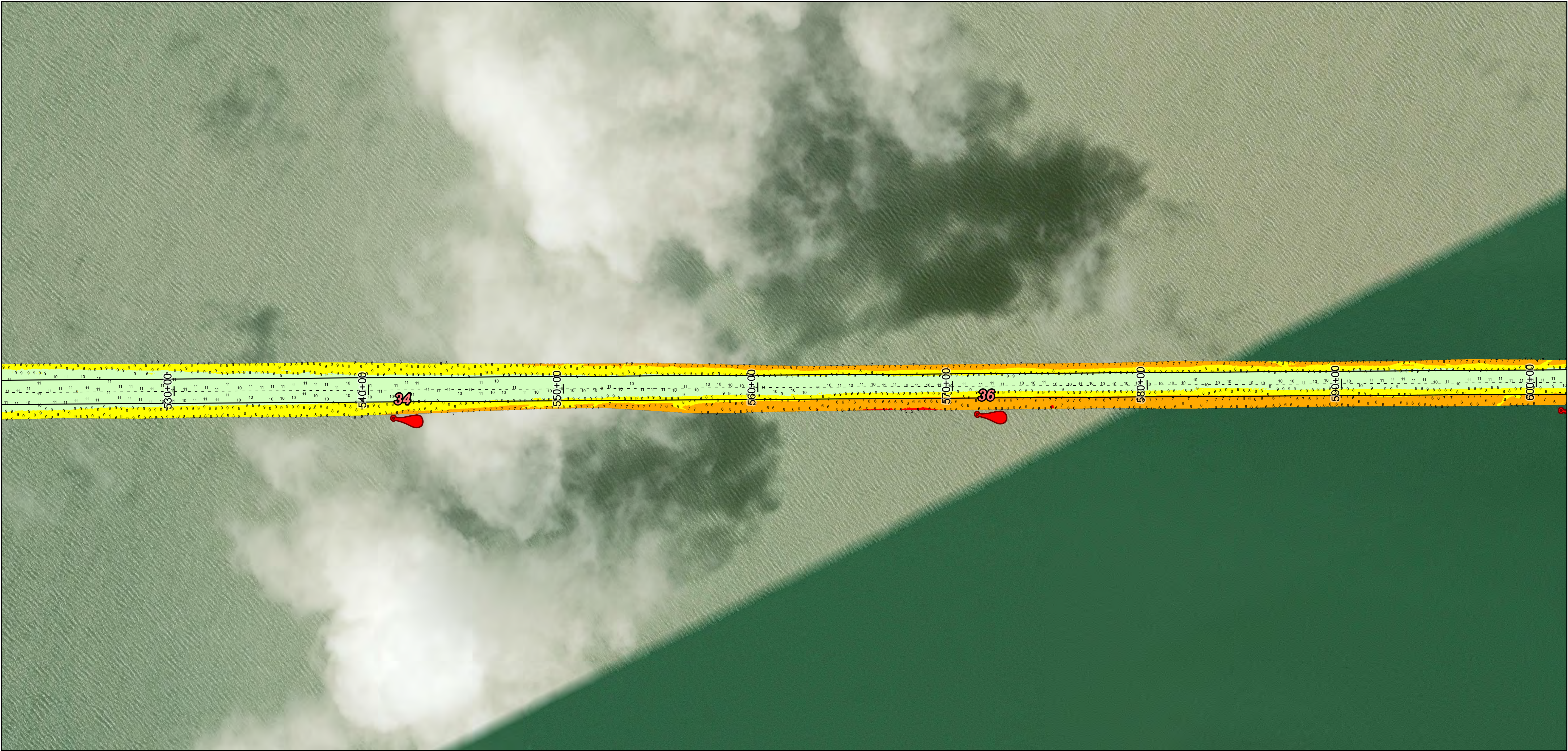
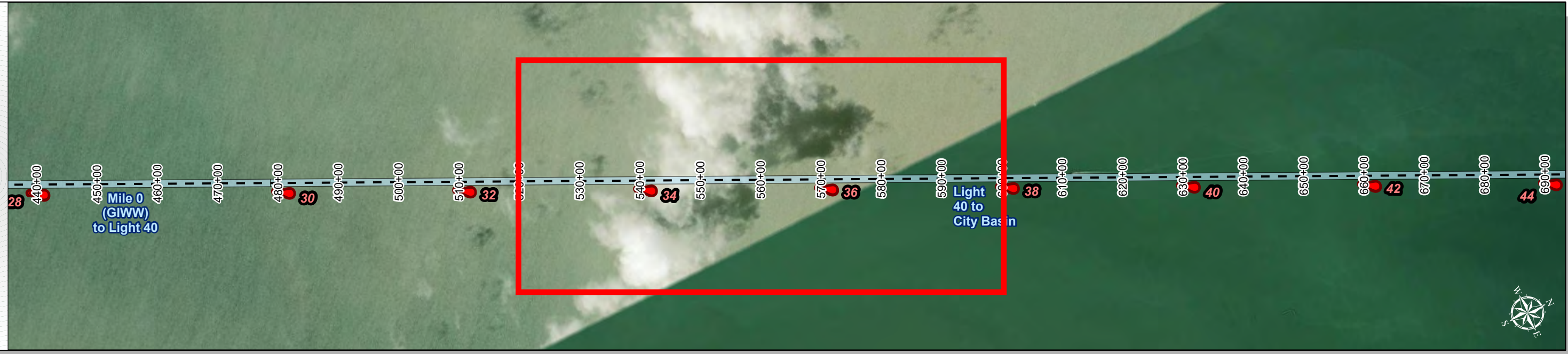
Channel to Palacios: Light 40 to City Basin



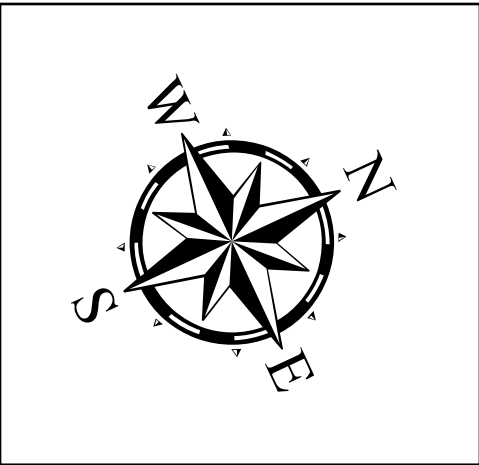
Regional Extent



Dredging Reach Extent



Latest Survey Collection Date: 23 December 2024		Authorized Depth: -14ft.
Document Page: 2 of 6	Website Index Number: 11	Side Slope Ratio: (Rise : Run)
Scale: 1:3,000		PDF Print Date: 12/26/2024
Mapped by: m3odnmnhg		
Additional Imagery info:		







HYDROGRAPHIC SURVEY

**ARMY ENGINEER DISTRICT
CORPS OF ENGINEERS
GALVESTON, TEXAS**

Station: 480+00 to 798+00
CHANNEL TO PALACIOS
Light 40 to City Basin

Light 40 to City Basin

Channel Features	Aids to Navigation	MLLW
--- Channel Center Line	 Green Side Aids	
— Channel Toe	 Red Side Aids	
↔ Channel Dimensions	 Lights	

NOTES:

1. Horizontal coordinates are referenced to Texas State Plane Coordinate System, South Central Zone NAD83 US Survey Feet.
2. Elevations are referenced to Mean Lower Low Water (MLLW) datum.
3. This project was designed by the Galveston District of the U.S. Army Corps of Engineers. The initials and signatures and registration designations of individuals appear on these project documents within the scope of their employment as required by 47100-4152.
4. The information depicted on this survey map represents the results of surveys made on the date indicated and can only be considered as indicating the general conditions existing at that time. These conditions are subject to rapid change due to shifting events. A prudent mariner should not rely exclusively on the information provided here. Required by 33 cfr 209.325.
5. For the most up to date information please check our website at: <http://www.swg.usace.army.mil/Misiones/Navigation/Hydrographic/Survey/>


Service Layer Credits: World Topographic Map: Texas Parks & Wildlife, Esri, HERE, Garmin, INCREMENT P, USGS, METINASA, NGA, EPA, USDA
World Imagery: Maxar
World Ocean Bases: Esri, GEBCO, Garmin, NaturalVue

Additional Combined Survey Dates and Stationing:
COMB_SURV_INFO_HERE

Coordinate System: NAD 1983 StatePlane Texas South Central FIPS 4204 Feet
Projection: Lambert Conformal Conic

Dredging Reach Extent

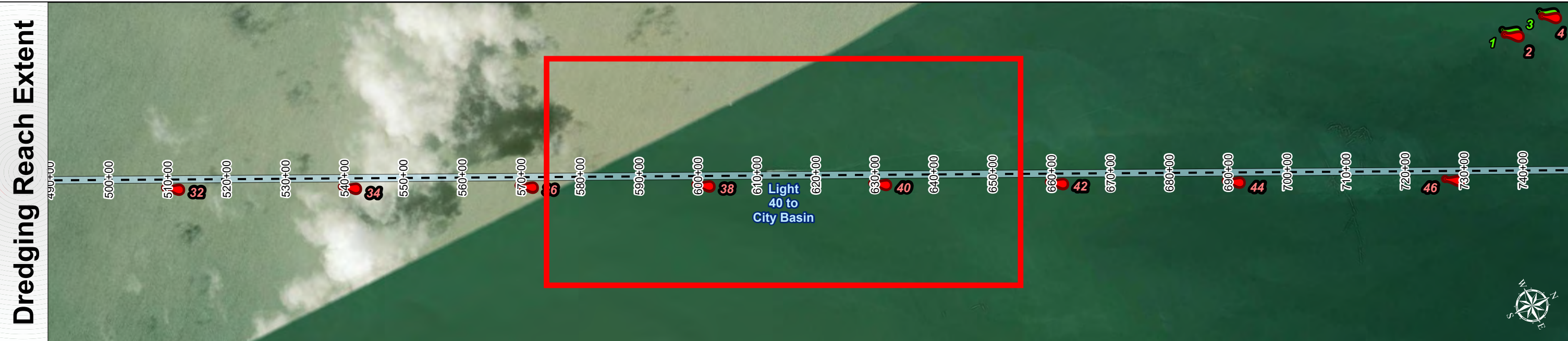
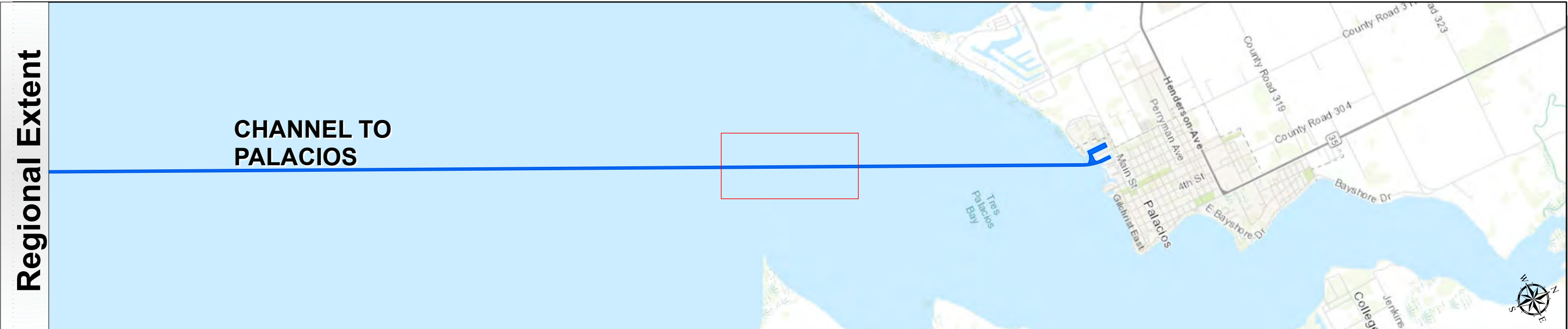
0 0.3 0.6 1.2 Miles



Hydrographic Survey Extent

0 255 510 1,020 Feet

Channel to Palacios: Light 40 to City Basin



U.S. Army Corps of Engineers
Galveston District

T E X A S



Channel Features

- Channel Center Line
- Channel Toe
- Channel Dimensions

Aids to Navigation

- Green Side Aids
- Red Side Aids
- Lights

MLLW

0 - 4	4 - 6	6 - 8	8 - 10	10 - 12	12 - 14	14 - 16	16 - 18	< 18
-------	-------	-------	--------	---------	---------	---------	---------	------

NOTES:

- Horizontal coordinates are referenced to Texas State Plane Coordinate System, South Central Zone NAD83 US Survey Feet.
- Elevations are referenced to Mean Lower Low Water (MLLW) datum.
- This project was designed by the Galveston District of the U.S. Army Corps of Engineers. The initials and signatures and registration designations of individuals appear on these project documents within the scope of their employment as required by 47CFR 110.1-41.02.
- The information depicted on this survey map represents the results of surveys made on the dates indicated and can only be considered as indicating the general conditions existing at that time. These conditions are subject to rapid change due to shoaling events. A prudent mariner should not rely exclusively on the information provided here. Required by 33 CFR 209.325
- For the most up to date information please check our website at: <http://www.svg.usace.army.mil/Missions/Navigation/HydrographicSurveys/>

Service Layer Credits: World Topographic Map: Texas Parks & Wildlife, Esri, HERE, Garmin, INCREMENT P, USGS, METINASA, NGA, EPA, USDA
World Imagery: Maxar
World Ocean Base: Esri, GEBCO, Garmin, NaturalVue

Additional Combined Survey Dates and Stationing:

COMB_SURV_INFO_HERE

Coordinate System: NAD 1983 StatePlane Texas South Central FIPS 4204 Feet
Projection: Lambert Conformal Conic

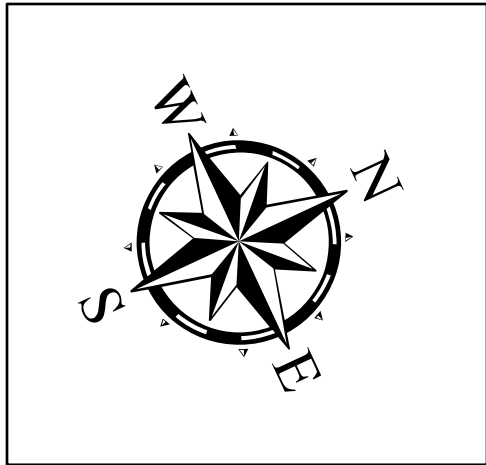
Dredging Reach Extent

0 0.3 0.6 1.2 Miles

Hydrographic Survey Extent

0 255 510 1,020 Feet

Latest Survey Collection Date: 23 December 2024	Authorized Depth: -14ft.	
	Document Page: 3 of 6	Side Slope Ratio: (Rise : Run)
	Scale: 1:3,000	PDF Print Date: 12/26/2024
Mapped by: m3odnmhg		
Additional Imagery info:		



HYDROGRAPHIC SURVEY

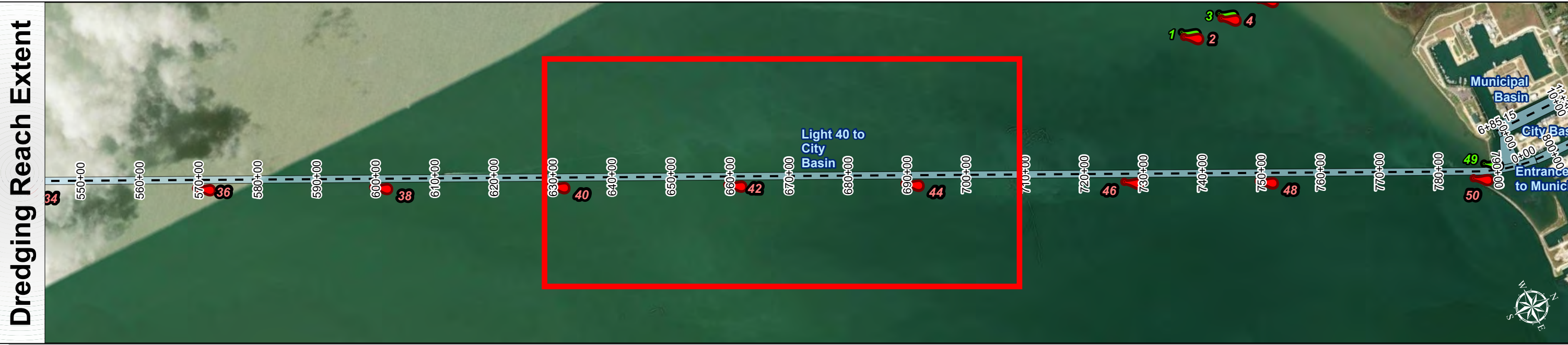
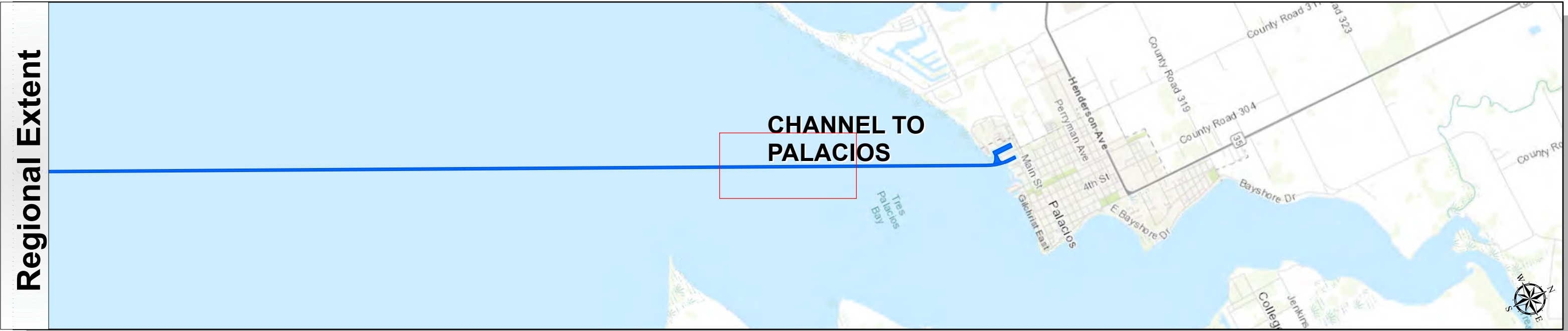
U.S. ARMY ENGINEER DISTRICT
CORPS OF ENGINEERS
GALVESTON, TEXAS

Station: 480+00 to 798+00

CHANNEL TO PALACIOS

Light 40 to City Basin

Channel to Palacios: Light 40 to City Basin

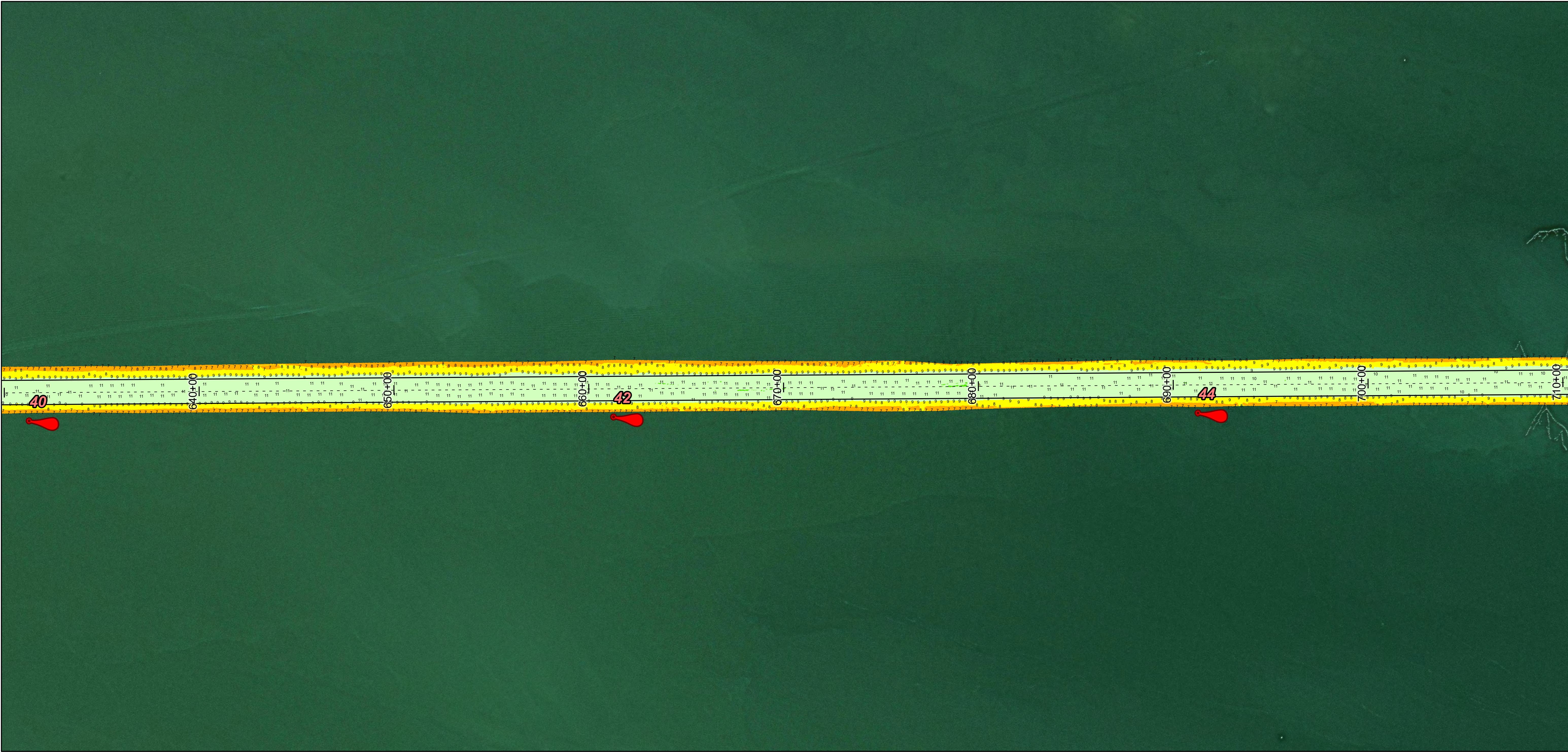




U.S. Army Corps of Engineers
Galveston District



T E X A S



Channel Features

- Channel Center Line
- Channel Toe
- Channel Dimensions

Aids to Navigation

- Green Side Aids
- Red Side Aids
- Lights

MLLW

0 - 4	4 - 6	6 - 8	8 - 10	10 - 12	12 - 14	14 - 16	16 - 18	< 18
-------	-------	-------	--------	---------	---------	---------	---------	------

NOTES:

- Horizontal coordinates are referenced to Texas State Plane Coordinate System, South Central Zone NAD83 US Survey Feet.
- Elevations are referenced to Mean Lower Low Water (MLLW) datum.
- This project was designed by the Galveston District of the U.S. Army Corps of Engineers. The initials and signatures and registration designations of individuals appear on these project documents within the scope of their employment as required by er1110-1-8102.
- The information depicted on this survey map represents the results of surveys made on the dates indicated and can only be considered as indicating the general conditions existing at that time. These conditions are subject to rapid change due to shoaling events. A prudent mariner should not rely exclusively on the information provided here. Required by 33 or 209.325
- For the most up to date information please check our website at: <http://www.svg.usace.army.mil/Missions/Navigation/HydrographicSurveys/>

Service Layer Credits: World Topographic Map: Texas Parks & Wildlife, Esri, HERE, Garmin, INCREMENT P, USGS, METINASA, NGA, EPA, USDA
World Imagery: Maxar
World Ocean Base: Esri, GEBCO, Garmin, NaturalVue

Additional Combined Survey Dates and Stationing:

COMB_SURV_INFO_HERE

Coordinate System: NAD 1983 StatePlane Texas South Central FIPS 4204 Feet
Projection: Lambert Conformal Conic

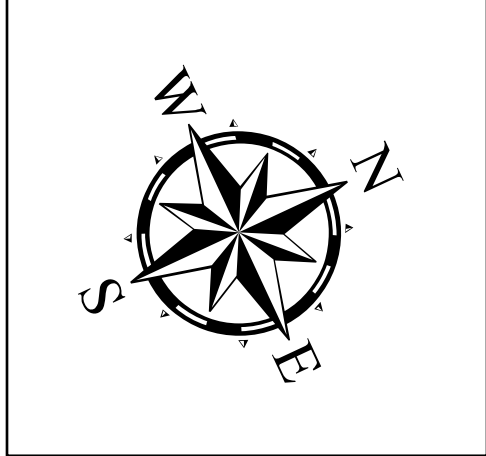
Dredging Reach Extent

0 0.3 0.6 1.2 Miles

Hydrographic Survey Extent

0 255 510 1,020 Feet

Latest Survey Collection Date: 23 December 2024	Authorized Depth: -14ft.
	Side Slope Ratio: (Rise : Run)
Document Page: 4 of 6	Website Index Number: 13
Scale: 1:3,000	PDF Print Date: 12/26/2024
Mapped by: m3odmnhg	
Additional Imagery info:	



HYDROGRAPHIC SURVEY

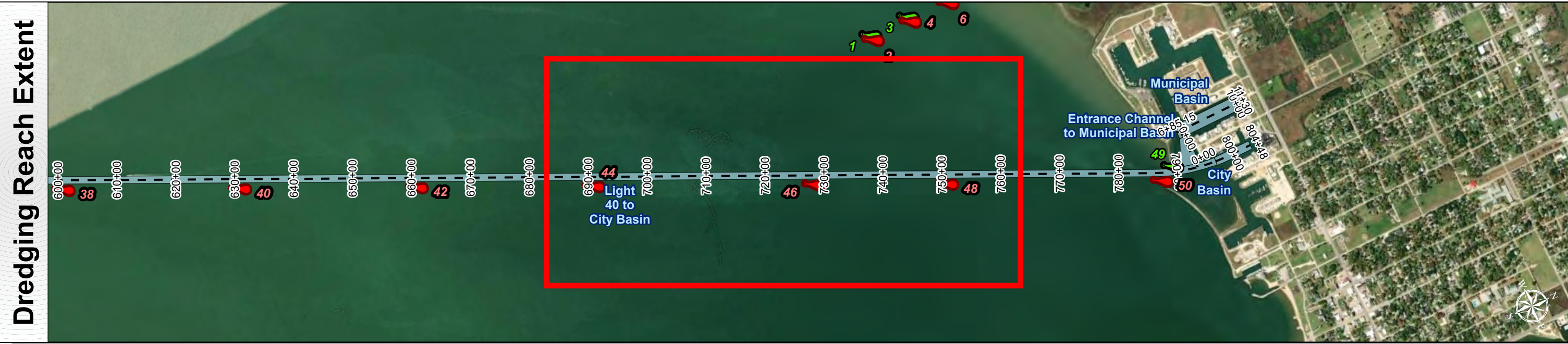
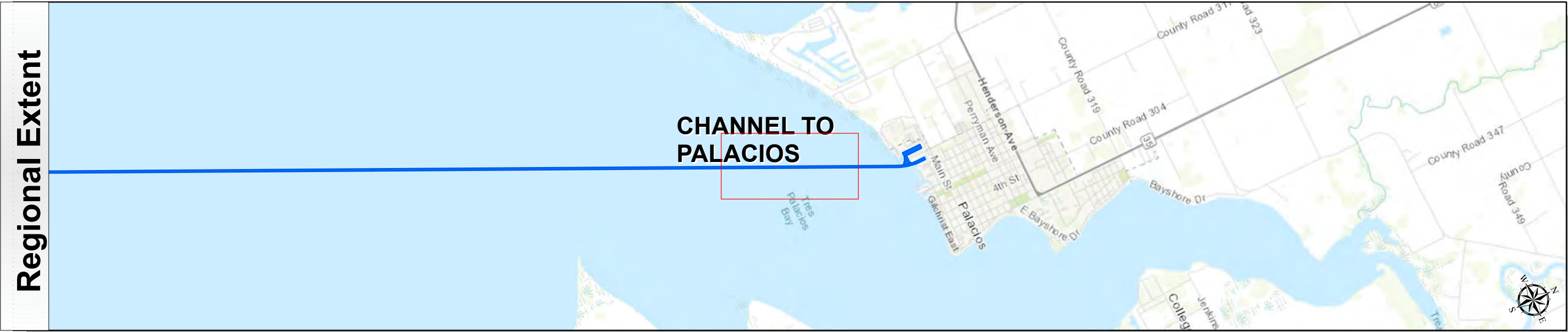
U.S. ARMY ENGINEER DISTRICT
CORPS OF ENGINEERS
GALVESTON, TEXAS

Station: 480+00 to 798+00

CHANNEL TO PALACIOS

Light 40 to City Basin

Channel to Palacios: Light 40 to City Basin





U.S. Army Corps of Engineers
Galveston District





Channel Features

- Channel Center Line
- Channel Toe
- Channel Dimensions

Aids to Navigation

- Green Side Aids
- Red Side Aids
- Lights

MLLW

0 - 4	4 - 6	6 - 8	8 - 10	10 - 12	12 - 14	14 - 16	16 - 18	< 18
Dark Red	Red	Orange	Yellow	Light Green	Green	Light Blue	Blue	Dark Blue

NOTES:

- Horizontal coordinates are referenced to Texas State Plane Coordinate System, South Central Zone NAD83 US Survey Feet.
- Elevations are referenced to Mean Lower Low Water (MLLW) datum.
- This project was designed by the Galveston District of the U.S. Army Corps of Engineers. The initials and signatures and registration designations of individuals appear on these project documents within the scope of their employment as required by er1110-1-8102.
- The information depicted on this survey map represents the results of surveys made on the dates indicated and can only be considered as indicating the general conditions existing at that time. These conditions are subject to rapid change due to shoaling events. A prudent mariner should not rely exclusively on the information provided here. Required by 33 CFR 209.325
- For the most up to date information please check our website at: <http://www.svg.usace.army.mil/Missions/Navigation/HydrographicSurveys/>

Service Layer Credits: World Topographic Map: Texas Parks & Wildlife, Esri, HERE, Garmin, INCREMENT P, USGS, METINASA, NGA, EPA, USDA
World Imagery: Maxar
World Ocean Base: Esri, GEBCO, Garmin, NaturalVue

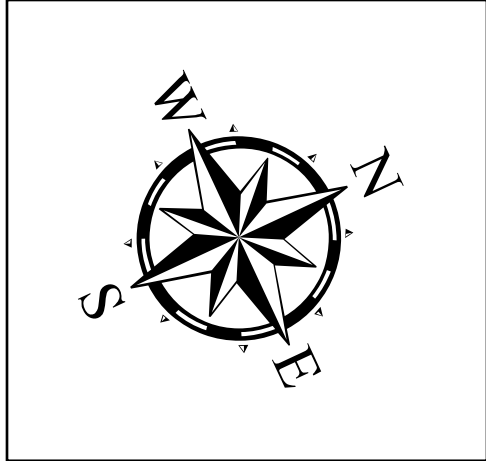
Additional Combined Survey Dates and Stationing:
COMB_SURV_INFO_HERE

Coordinate System: NAD 1983 StatePlane Texas South Central FIPS 4204 Feet
Projection: Lambert Conformal Conic

Dredging Reach Extent
0 0.3 0.6 1.2 Miles

Hydrographic Survey Extent
0 255 510 1,020 Feet

Latest Survey Collection Date: 23 December 2024	Authorized Depth: -14ft.	
	Side Slope Ratio: (Rise : Run)	PDF Print Date: 12/26/2024
	Document Page: 5 of 6	Website Index Number: 14
Scale: 1:3,000		
Mapped by: m3odnmhg		
Additional Imagery info:		



HYDROGRAPHIC SURVEY

U.S. ARMY ENGINEER DISTRICT
CORPS OF ENGINEERS
GALVESTON, TEXAS

Station: 480+00 to 798+00

CHANNEL TO PALACIOS

Light 40 to City Basin

Channel to Palacios: Light 40 to City Basin



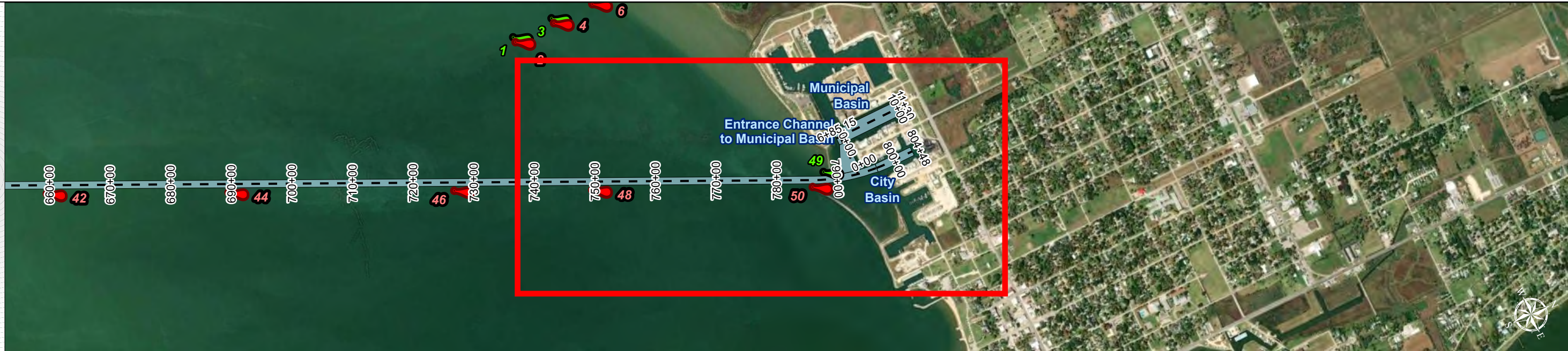
U.S. Army Corps of Engineers
Galveston District



Regional Extent



Dredging Reach Extent



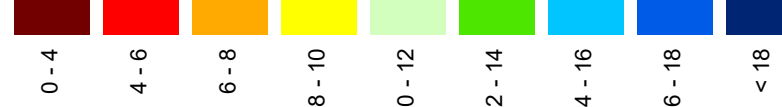
Channel Features

- Channel Center Line
- Channel Toe
- Channel Dimensions

Aids to Navigation

- Green Side Aids
- Red Side Aids
- Lights

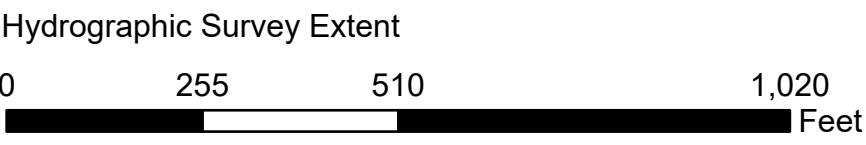
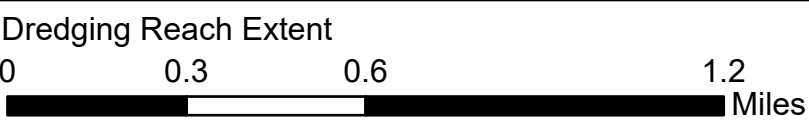
MLLW



NOTES:
1. Horizontal coordinates are referenced to Texas State Plane Coordinate System, South Central Zone NAD83 US Survey Feet.
2. Elevations are referenced to Mean Lower Low Water (MLLW) datum.
3. This project was designed by the Galveston District of the U.S. Army Corps of Engineers. The initials and signatures and registration designations of individuals appear on these project documents within the scope of their employment as required by 47CFR 110.1-41.02.
4. The information depicted on this survey map represents the results of surveys made on the dates indicated and can only be considered as indicating the general conditions existing at that time. These conditions are subject to rapid change due to shoaling events. A prudent mariner should not rely exclusively on the information provided here. Required by 33 CFR 209.325
5. For the most up to date information please check our website at: <http://www.svg.usace.army.mil/Missions/Navigation/HydrographicSurveys/>
Service Layer Credits: World Topographic Map: Texas Parks & Wildlife, Esri, HERE, Garmin, INCREMENT P, USGS, METINASA, NGA, EPA, USDA
World Imagery: Maxar
World Ocean Base: Esri, GEBCO, Garmin, NaturalVue

Additional Combined Survey Dates and Stationing:
COMB_SURV_INFO_HERE

Coordinate System: NAD 1983 StatePlane Texas South Central FIPS 4204 Feet
Projection: Lambert Conformal Conic

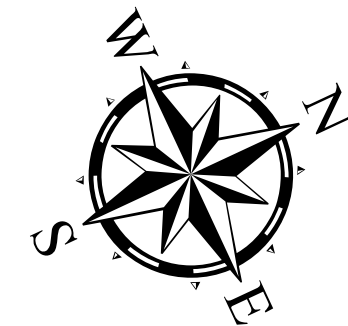


HYDROGRAPHIC SURVEY

U.S. ARMY ENGINEER DISTRICT
CORPS OF ENGINEERS
GALVESTON, TEXAS

Station: 480+00 to 798+00
CHANNEL TO PALACIOS

Light 40 to City Basin



Latest Survey Collection Date: 23 December 2024
Document Page: 6 of 6
Scale: 1:3,000
Mapped by: m3odnmhg
Additional Imagery info:

Authorized Depth: -14ft.

Side Slope Ratio: (Rise : Run)

PDF Print Date: 12/26/2024