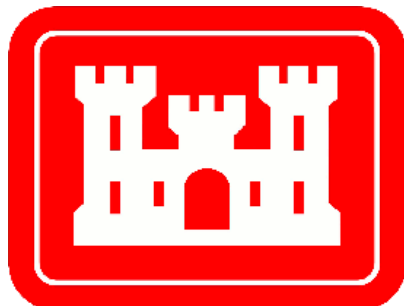


San Bernard River Channel: Mile 25.2 to Mile 26



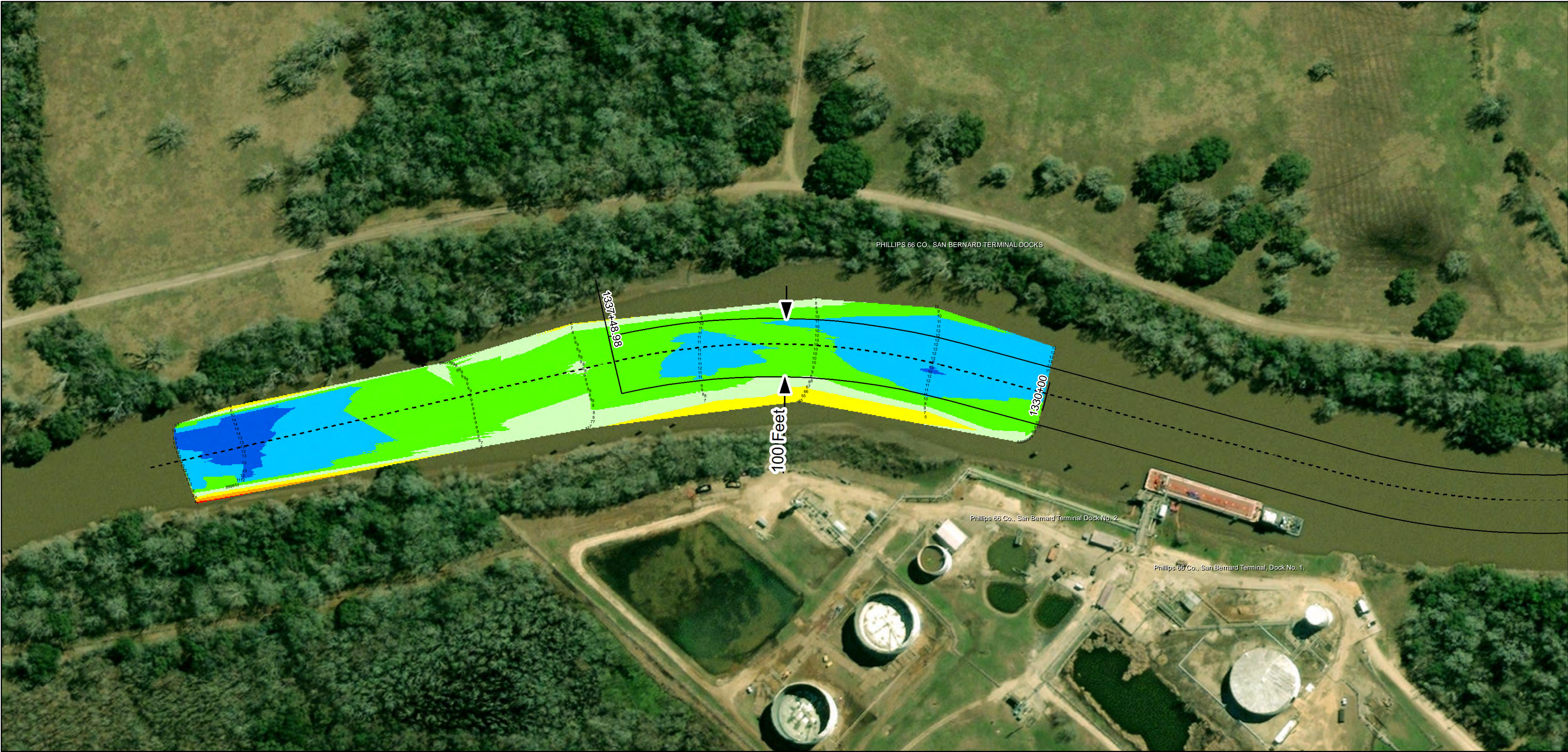
U.S. Army Corps of Engineers
Galveston District



Regional Extent



Dredging Reach Extent

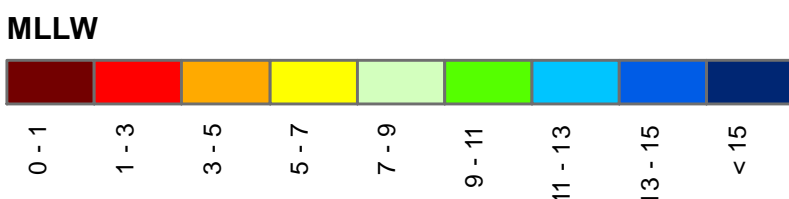


Channel Features

- Channel Toe
- Channel Center Line
- Channel Station Lines
- Channel Dimensions

Aids to Navigation

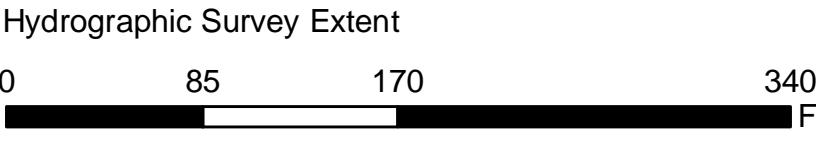
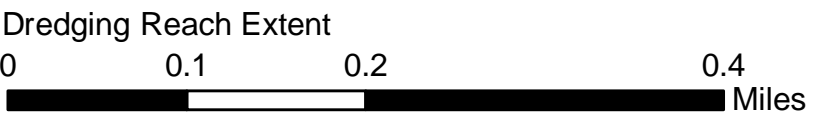
- Green Side Aids
- Red Side Aids
- Lights



NOTES:
1. Horizontal coordinates are referenced to Texas state plane coordinate system, south central zone nad83 us survey feet.
2. Elevations are referenced to mean lower low side (MLLW) datum.
3. This project was designed by the Galveston District of the U.S. Army Corps of Engineers. The initials and signatures and registration designations of individuals appear on these project documents within the scope of their employment as required by 48 CFR 101-11.6-11.6-2.
4. The information depicted on this survey map represents the results of surveys made on the dates indicated and can only be considered as indicating the general conditions existing at that time. These conditions are subject to rapid change due to shoaling events. A prudent mariner should not rely exclusively on the information provided here. Required by 33 CFR 209.320.
5. For the most up to date information please check our website at: <http://www.swp.usace.army.mil/Missions/Navigation/HydrographicSurveys/>
Service Layer Credits: Sources: Esri, HERE, Garmin, Intermap, increment P Corp., GEBCO, USGS, FAO, NPS, NRCAN, GeoBase, IGN, Kadaster NL, Ordnance Survey, Esri Japan, METI, Esri China (Hong Kong), (c) OpenStreetMap contributors, and the GIS User Community
Source: Esri, Maxar, Earthstar Geographics, and the GIS User Community
Esri, Garmin, GEBCO, NOAA/NGDC, and other contributors

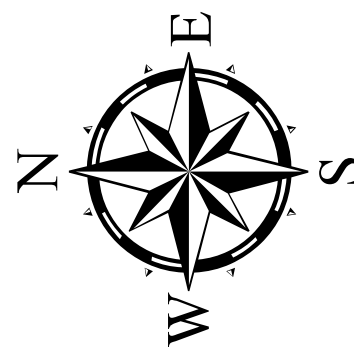
Additional Combined Survey Dates and Stationing:
COMB_SURV_INFO_HERE

Coordinate System: NAD 1983 StatePlane Texas South Central FIPS 4204 Feet
Projection: Lambert Conformal Conic/Datum: North American 1983



HYDROGRAPHIC SURVEY

U.S. ARMY ENGINEER DISTRICT
CORPS OF ENGINEERS
GALVESTON, TEXAS
Station: 1330+00 to 1337+48.98
SAN BERNARD RIVER CHANNEL
Mile 25.2 to Mile 26



Latest Survey Collection Date: 10 May 2022		Authorized Depth: -11ft.	
Document Page: 1 of 1	Website Index Number: 19	Side Slope Ratio: (Rise : Run)	
Scale: 1:1,000		PDF Print Date: 5/16/2022	
Mapped by: M3AOXPAC			
Additional Imagery info:			